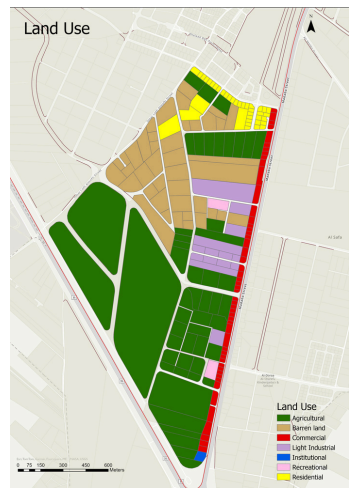
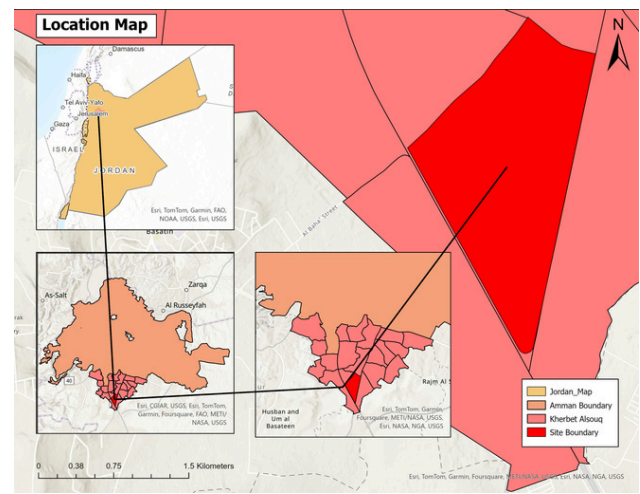


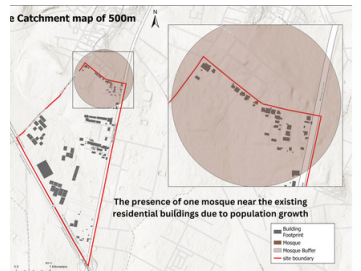
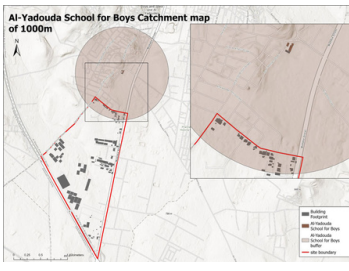
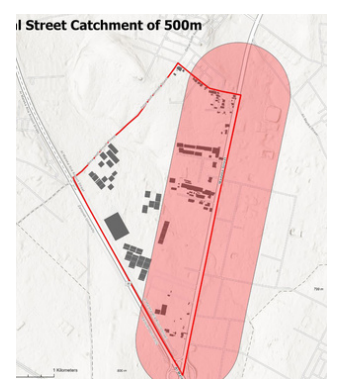
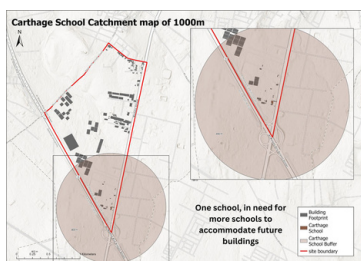
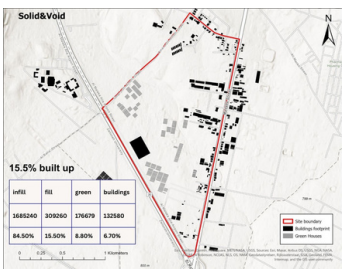
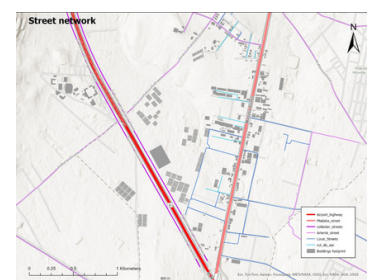
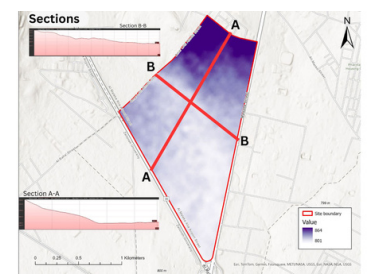
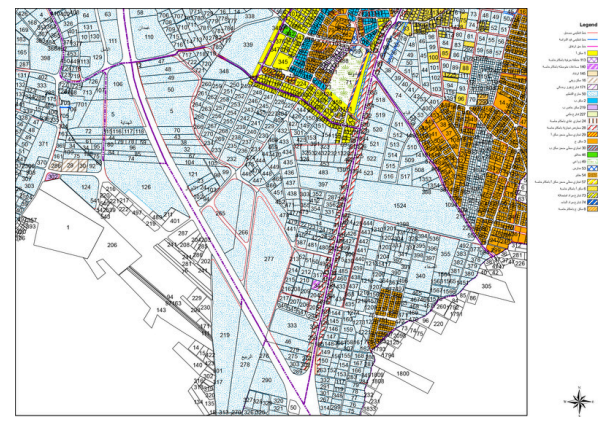
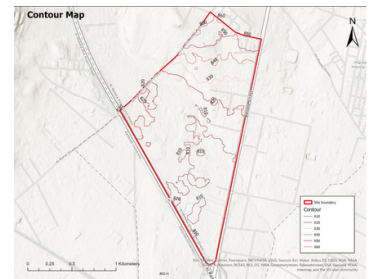
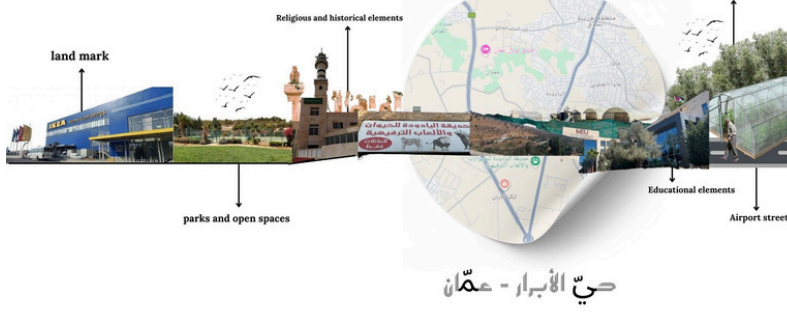
THE GREEN LINE COMMUNITY

Presentation of the project

LOCATION, BACKGROUND & SITE ANALYSIS



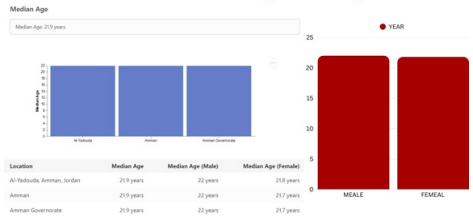
MESO ANALYSIS :
<https://drive.google.com/file/d/1y1x6hqX4c9C4jw8ZXj72ttUjd7vW27EJ/view?usp=drivesdk>



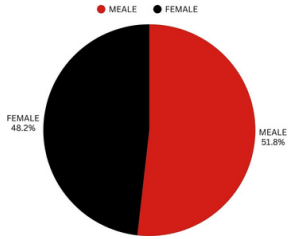
Sustainability Framework Table

Sustainability Pillar	Design Integration	Impact / Value
Environmental	Green corridors connecting existing green pockets- Urban farming on rooftops and empty lots- Rainwater harvesting & solar panels on buildings- Eco-friendly building materials, smart waste management processes	- Reduces urban heat - Improves air quality - Boosts biodiversity - Cuts energy and water bills
Social	Inclusive public spaces (for youth, women, elderly)- Pedestrian-friendly streets with shade and seating- Community gardens managed by locals- Outdoor co-learning areas (workshops, education zones)	- Strengthens community bonds - Promotes health and well-being - Empowers marginalized groups - Encourages ownership and pride
Economic	Micro-enterprise kiosks and markets- Rooftop farming for income & food security- Solar-powered co-working space- Support zones for home-based businesses (with shared resources)	- Supports local economy - Reduces cost of living - Creates jobs - Builds local circular economy

MEDIAN AGE: The median age is 21.9 years



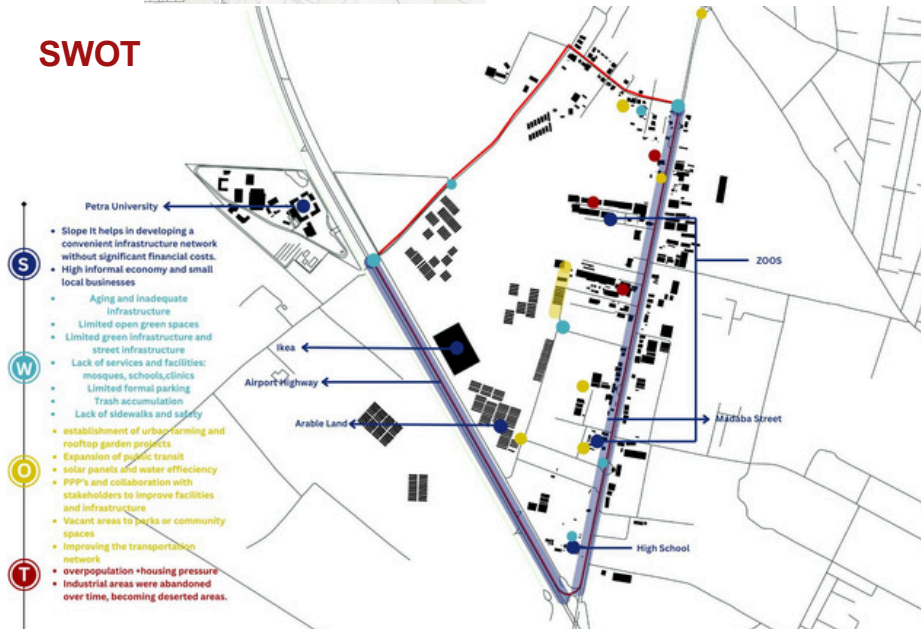
GENDER DISTRIBUTION



POPULATION 1975 TO 2015

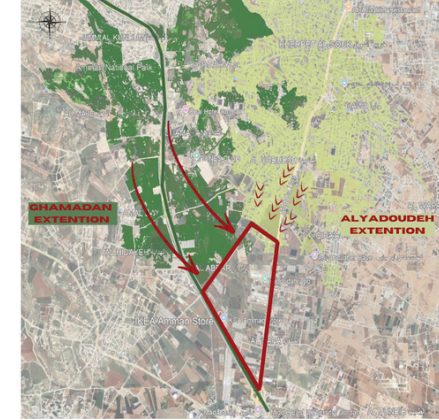
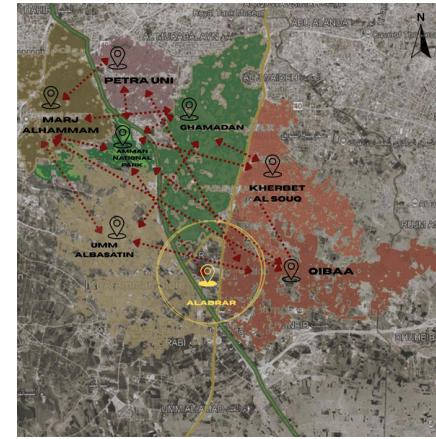
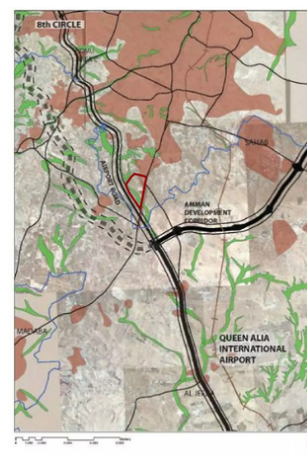
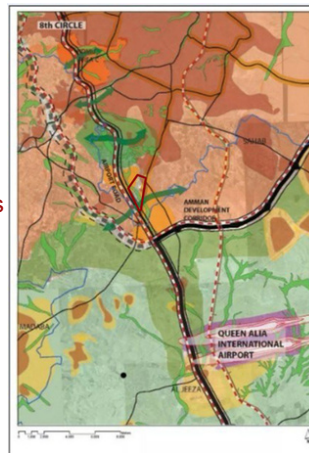


SWOT



CONCEPT

Al-Abrar Neighborhood is envisioned as a pioneering prototype for the future transformation of Airport Road into a continuous Green Corridor in Amman. Although the larger corridor project has not yet been implemented, this neighborhood serves as a bold starting point — merging Amman's historical identity with urban farming principles. Through climate-responsive zoning, productive landscapes, and inclusive public spaces, the project redefines sustainable, community-driven urban regeneration.

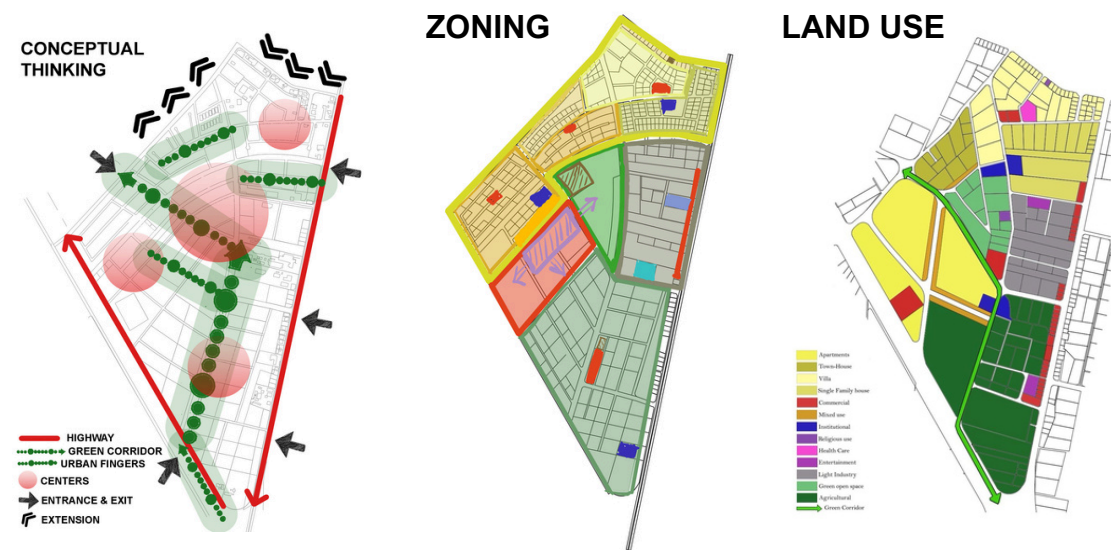
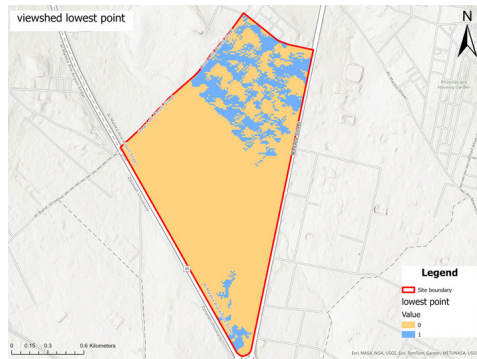
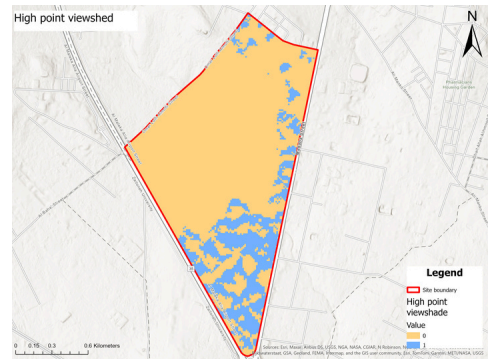


Concept Statement 1: Heritage & Transitional Identity

This concept preserves and celebrates the traditional identity of Hay Al Abrar while embracing modernity. By integrating open parks and green spaces inspired by neighboring Ghamadan, the design creates a seamless transition that connects the historic fabric of the community with contemporary urban life, forging a vibrant gateway that honors both past and present.

Concept Statement 2: Green Neighborhood – A Sustainable Oasis

Inspired by the area's agricultural legacy, the design emphasizes striking green corridors, open parks, and abundant tree cover, creating a visually engaging oasis that redefines urban life in Amman and stands out from the densely built surroundings. This concept transforms the site into a dynamic urban hub where residential and commercial spaces coexist with expansive greenery.



MICRO - GRID CONCEPT



Our project is driven by two main concepts: the Microgrid and Transit-Oriented Development (TOD). The Microgrid was integrated to provide decentralized, renewable energy solutions that enhance sustainability, reduce reliance on centralized systems, and ensure energy resilience at the neighborhood level. On the other hand, TOD was adopted as a strategic planning tool to guide future urban growth in Ghamdan by improving accessibility, minimizing car dependency, and promoting compact, walkable, and transit-connected development.

Land Use

- Apartment 9.47%
- Villas 5.06%
- Townhouses 7.54%
- Single Detached Houses 4.44%
- Mixed Use 2.94%
- Commercial 8.12%
- Institutional 3.81
- Recreational 1.30%
- Religious 0.26%
- Green Corridor 3.35%
- Open Spaces 5.40%
- Agricultural 23.86%
- Industrial 6.50%
- Parking 17.95



GREEN INFRASTRUCTURE

Infrastructure Details :
https://drive.google.com/file/d/1mjJlF_jX4t0Oy86DcNiO5vjftkO_xKjg/view?usp=drivesdk



- FINGER
- GREEN CORRIDOR
- PARKS
- URBAN FARMING

BUILDING USE (GROUND FLOOR)



- Apartments
- Villas
- Townhouses
- Single-Detached Houses
- Rural Houses
- Mixed-Use
- Commercial
- Educational
- Governmental
- Recreational
- Health Centre
- Industrial
- mosque

0 0.15 0.3 0.6 0.9 1.2 Kilometers



BUILDING USE (FIRST FLOOR)



- Apartments
- Villas
- Townhouses
- Single-Detached Houses
- Rural Houses
- Mixed-Use
- Commercial
- Educational
- Governmental
- Recreational
- Health Centre
- Industrial
- mosque
- Offices

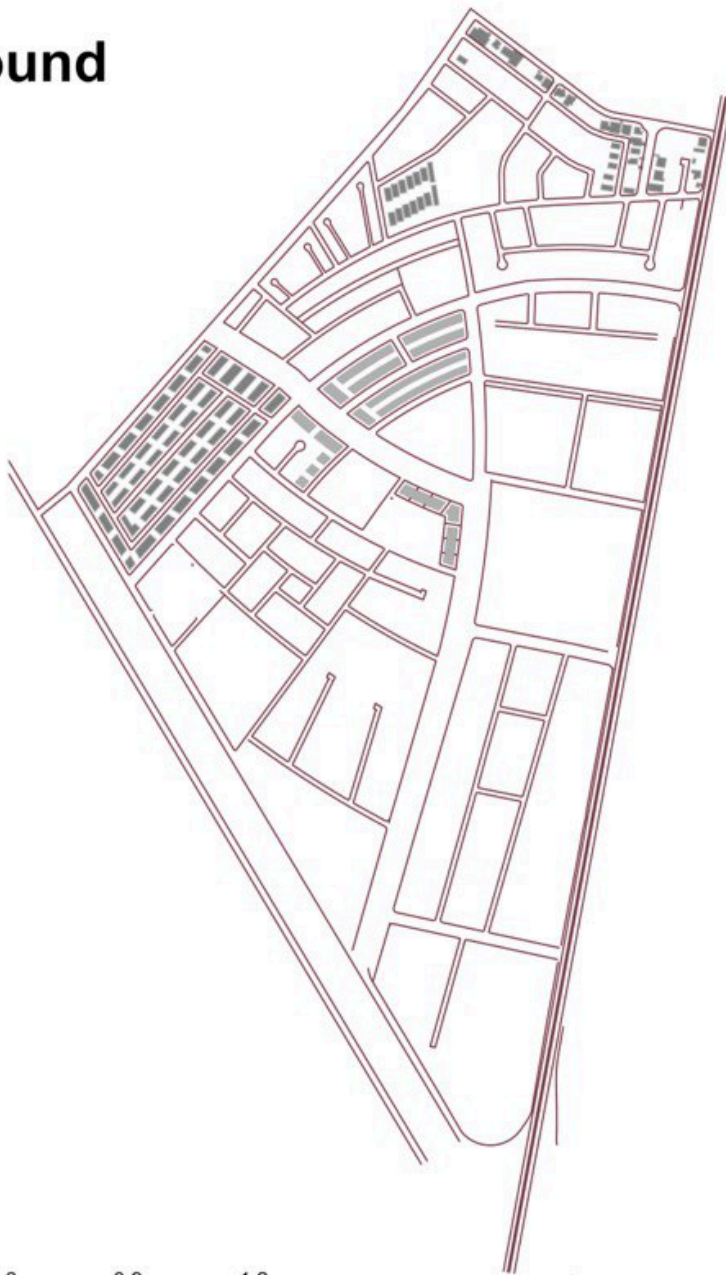
0 0.15 0.3 0.6 0.9 1.2 Kilometers



Underground Parking

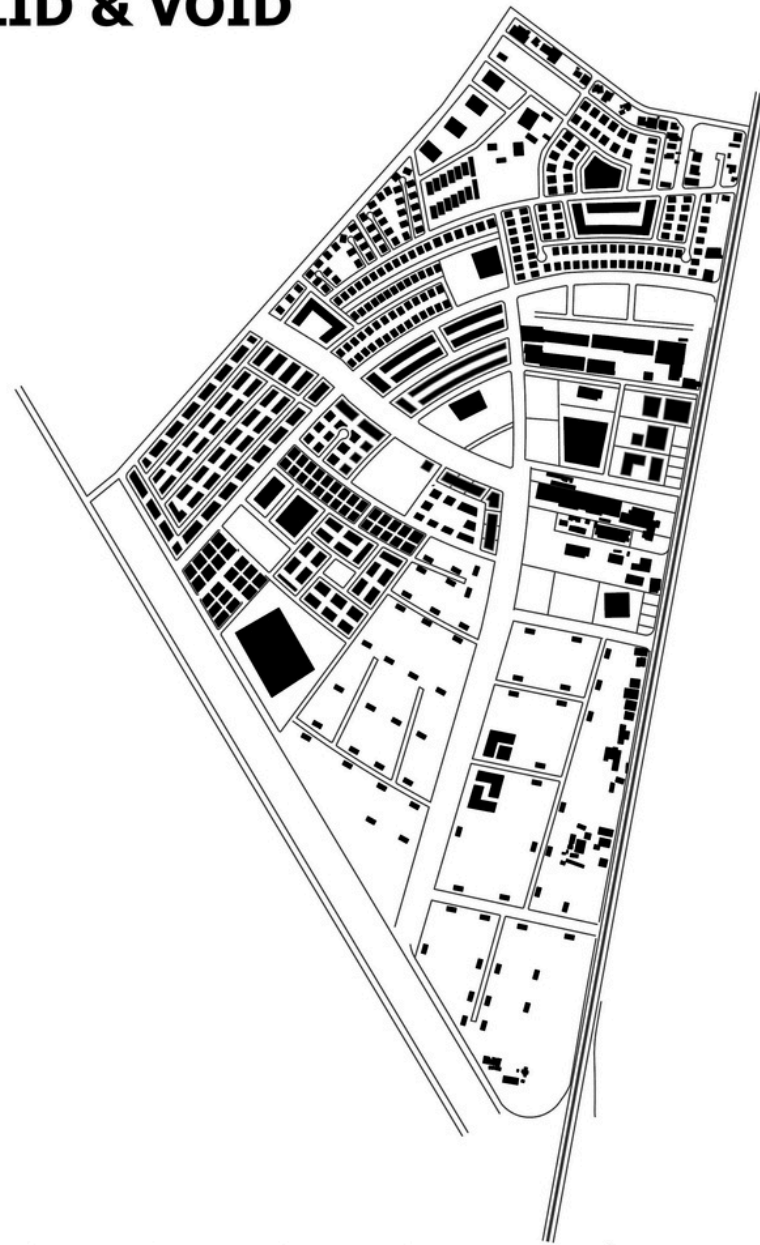
■ Mixed use
■ Apartments

0 0.15 0.3 0.6 0.9 1.2 Kilometers



SOLID & VOID

0 0.15 0.3 0.6 0.9 1.2 Kilometers

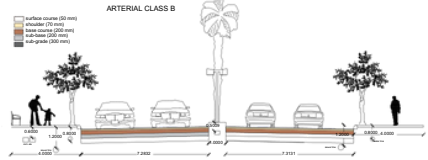
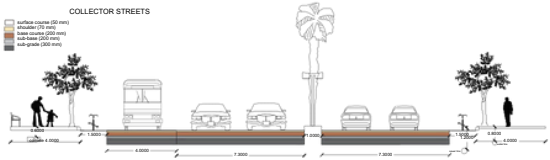
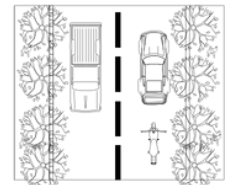
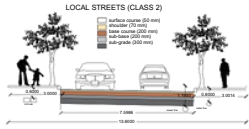
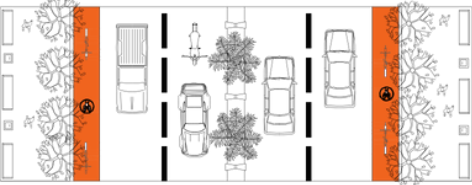
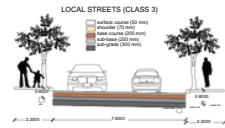
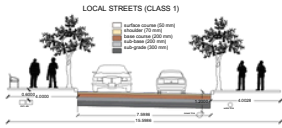
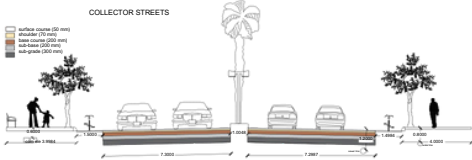
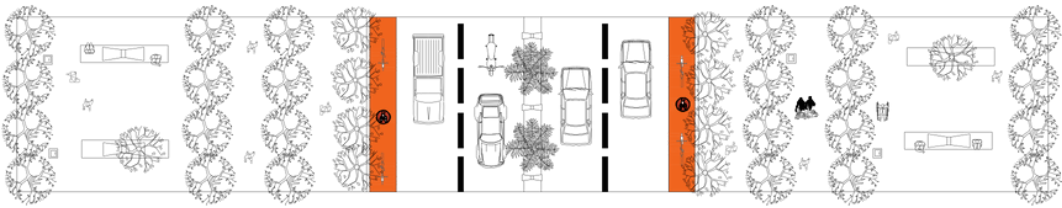
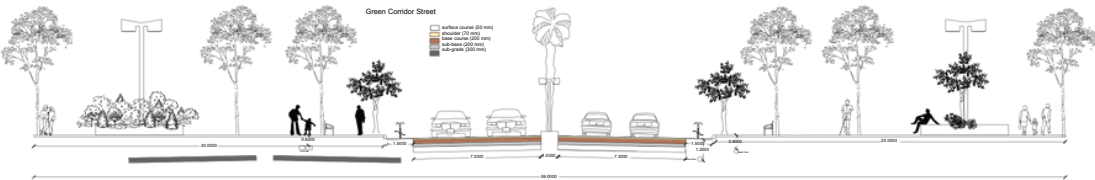
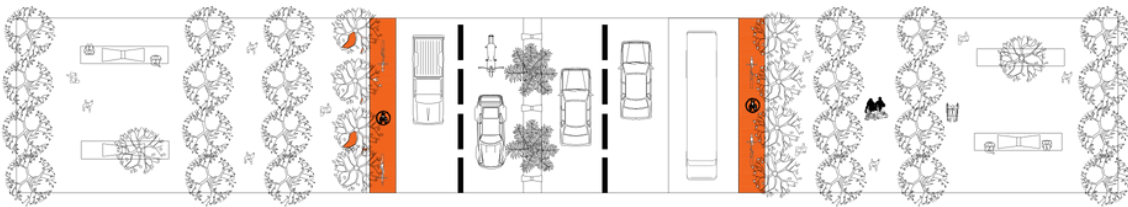


STREET NETWORK

- GREEN CORRIDOR
- LOCAL STREET CLASS C 30-50 KM/H
- LOCAL STREET CLASS B 30-50 KM/H
- LOCAL STREET CLASS A 30-50 KM/H
- COLLECTOR 70-80 KM/H
- ARTIREAL 80-90 KM/H
- HIGHWAY 80-100 KM/H
- side walk



Street Sections



Transportation

- Bicycle Stations
- Bicycle Lane
- Bus Line
- ⊙ Bus Stations



ONLY PEDESTRIAN

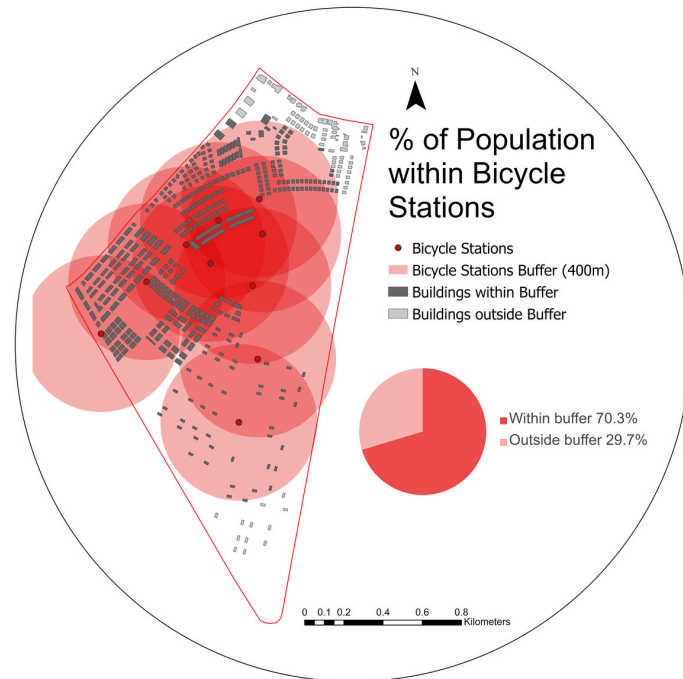
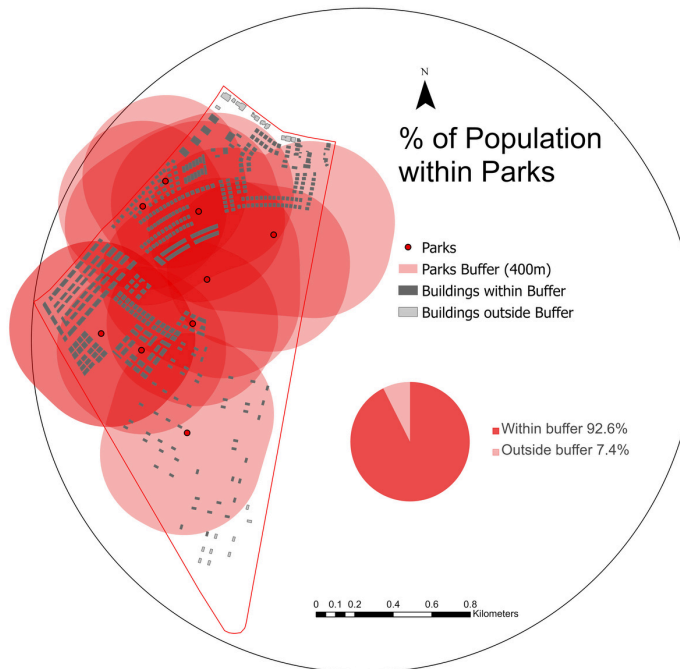
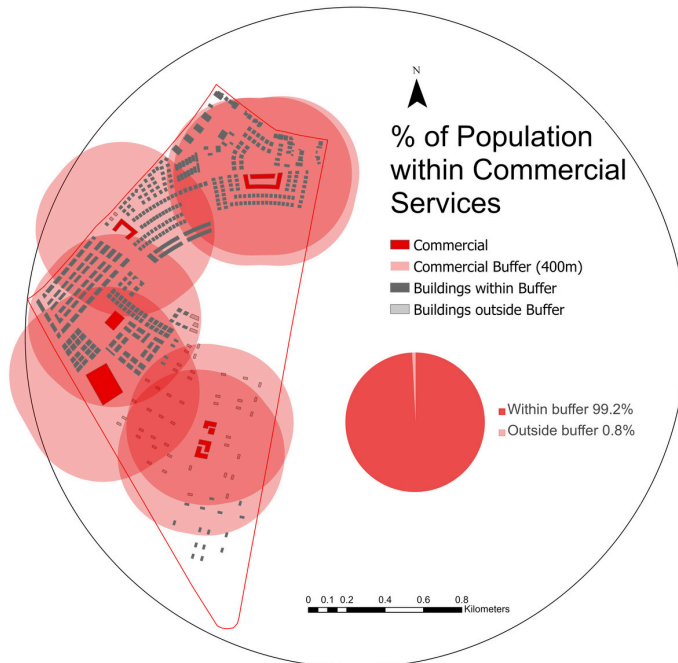
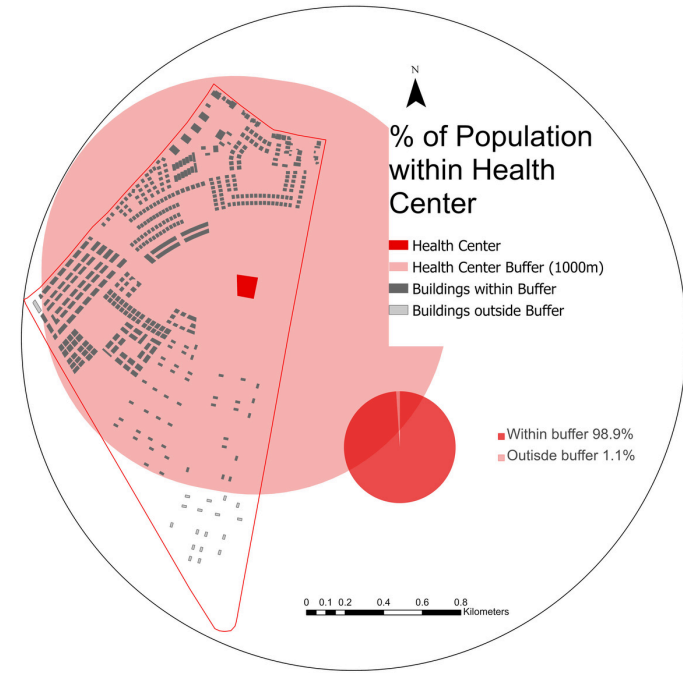
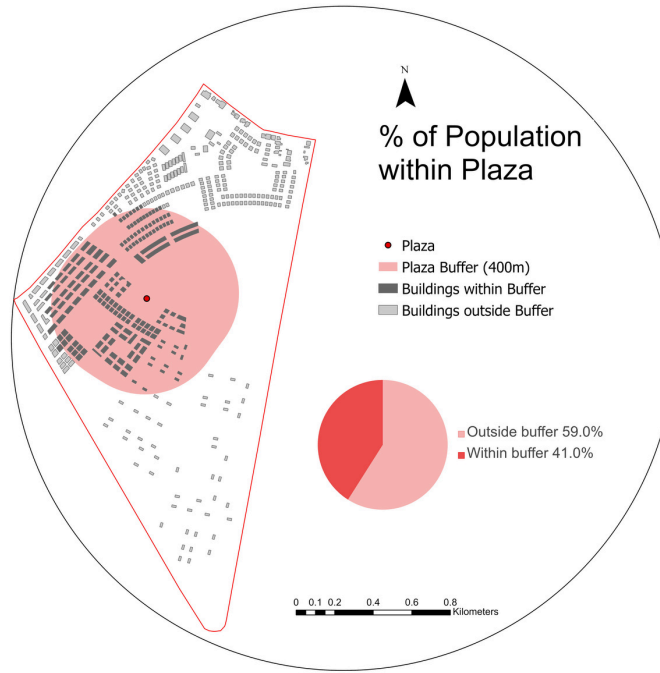
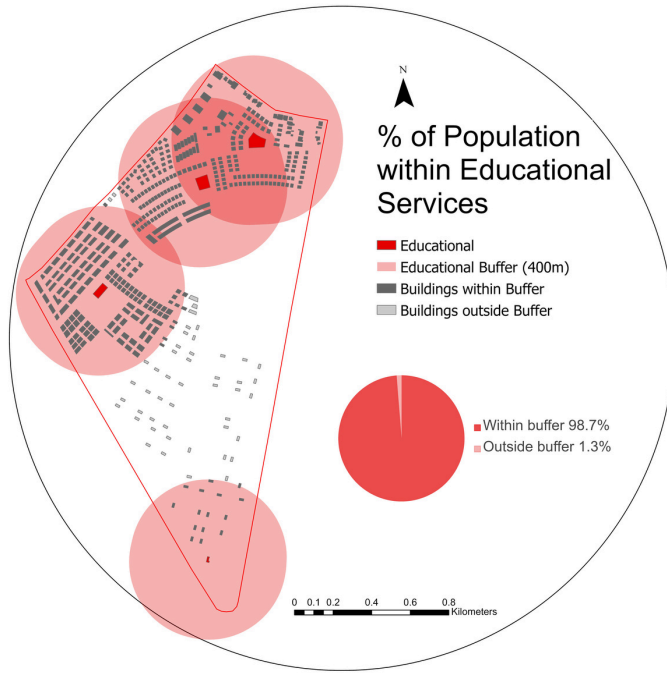
- STREET NETWORK
- side walk
- GREEN WAYS (Zero cars)
- BIKE LANE

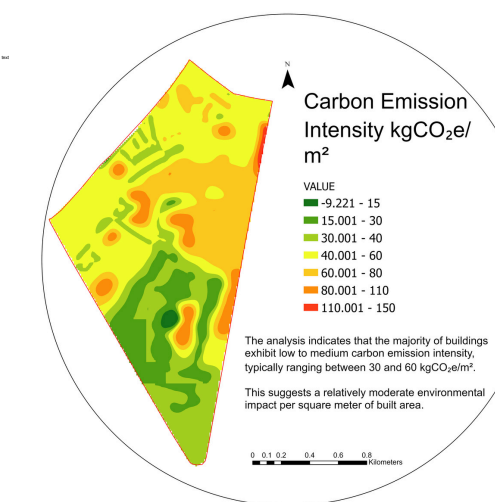
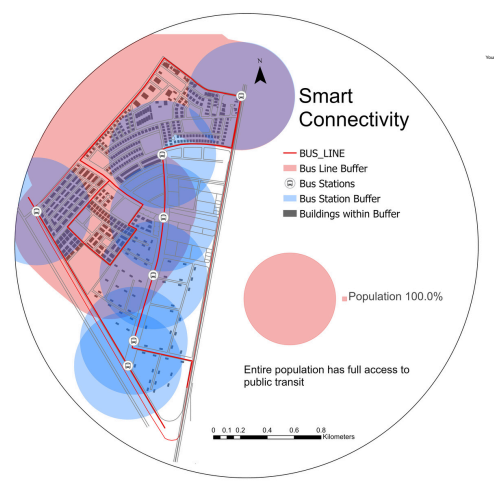
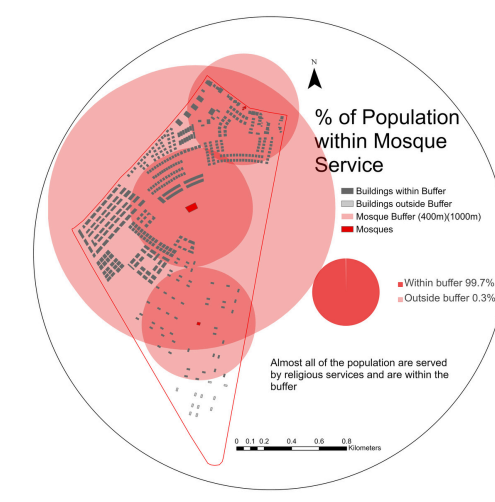
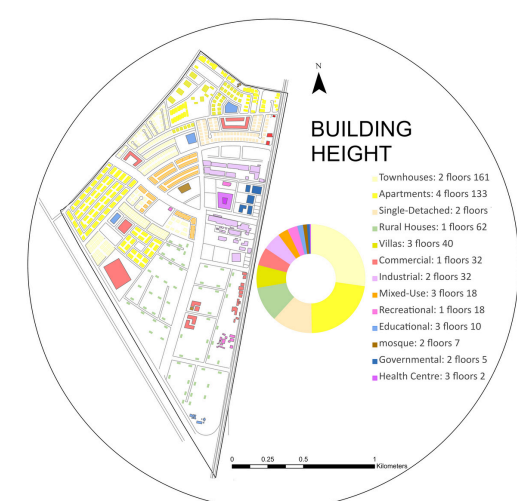
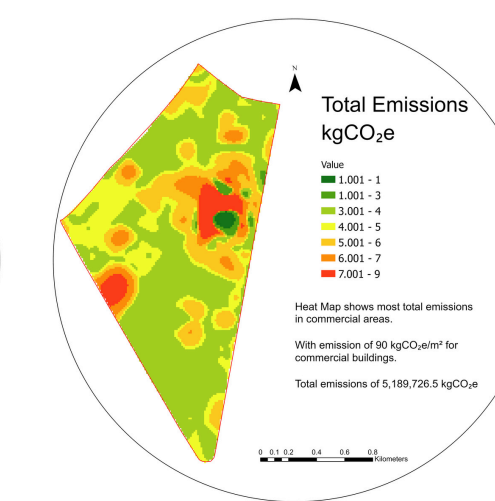
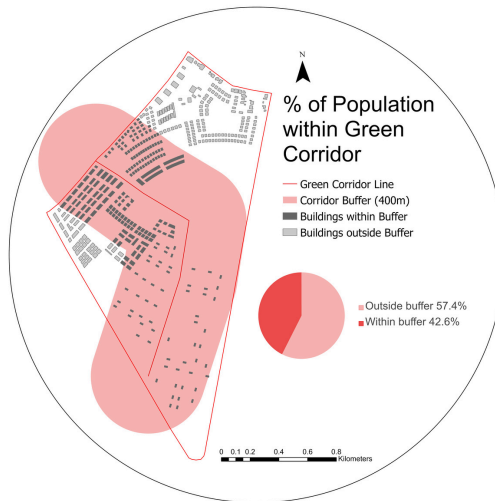
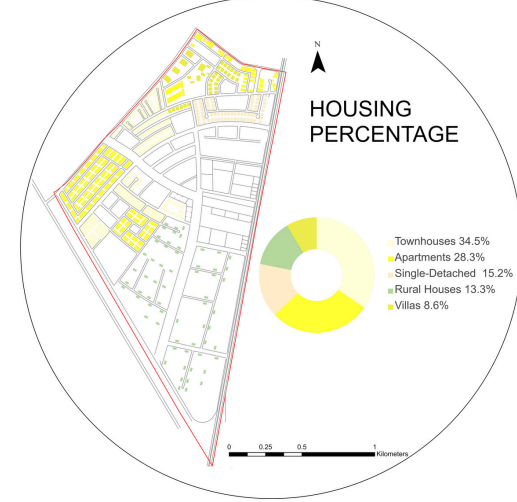
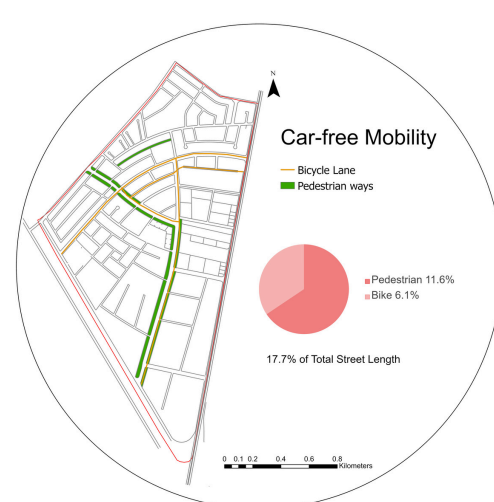
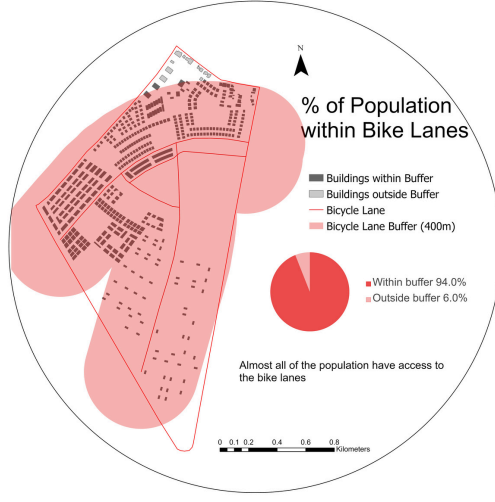


Framework

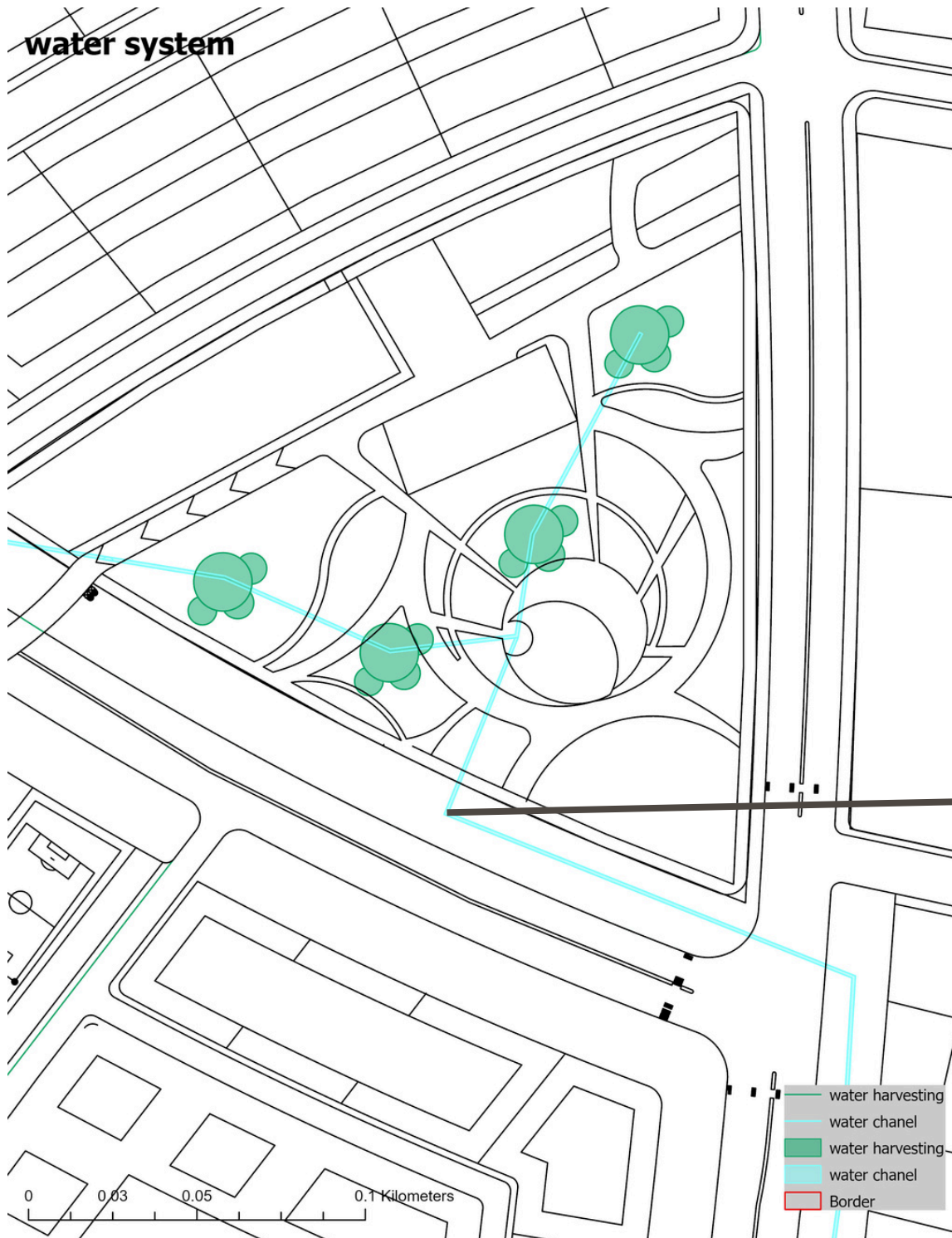
GIS MAPS :

<https://drive.google.com/file/d/123d4bEWi6e27rrPNw07Xr7VfLfJiRIqa/view?usp=drivesdk>

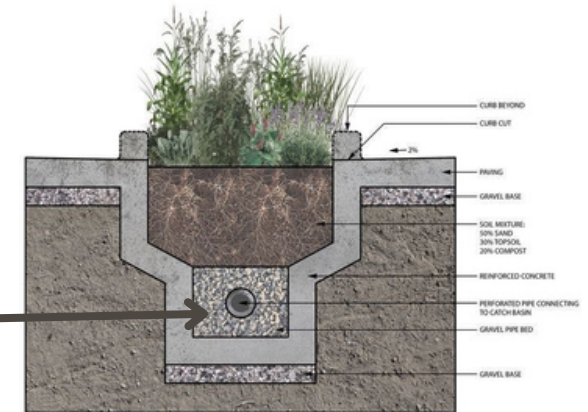




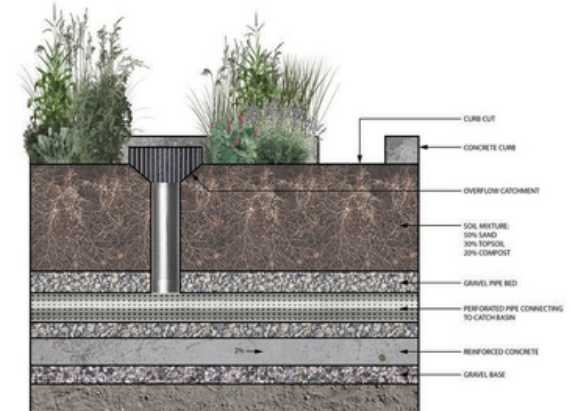
water system



Rain gardens in the corridor... We have integrated the existing water channel with the corridor and recommended canopies to collect the water in the garden and send it to the purification station to purify it and then use it in the garden and agricultural lands instead of the current earth dams.



TYPICAL BIOSWALE CROSS SECTION



TYPICAL BIOSWALE LONG SECTION