



Carolyn Bailey papers

Copyright Notice:

This material may be protected by copyright law (U.S. Code, Title 17). Researchers are liable for any infringement. For more information, visit

www.mnhs.org/copyright.

Seminar Committee:

Co-Directors

*LuAnn Zuhlsdorf
Minneapolis P.D.*

*Carolyn Bailey
St. Paul P.D.*

Reservations

*Tania Ostapenko
Minneapolis P.D.*

Displays

*Barbara Ego
Golden Valley P.D.*

Hospitality

*Juliann Brunzell
U. of M. P.D.*

Treasurer

*Evelyn Piepgras
Minneapolis P.D.*

Materials

*Patricia Ferrazzo
Maplewood P.D.*

Membership

*Sheila Gillson
Ramsey County Sheriff*

*International Association of Women Police
and
Minnesota Association of Women Police*

present

Fifth Regional Training Seminar

April 23, 1976

BANQUET

PROGRAM

Chaplain's Message

LuAn Zuhlsdorf
Chaplain, I.A.W.P.

Dinner

Welcome

LuAn Zuhlsdorf
Carolyn Bailey
Seminar Co-Directors

Presentation of Guests

Poll of Participants

Door Prizes

Speaker: Dr. George Kirkham
Florida State University
"From Professor to Police Officer"

Closing

WOMEN IN UNIFORM

May 12, 13, 1988
Minneapolis, MN

May 12

Human Relations

Phil Stuemke, St Louis Park
Tom Wilke, Airport

DPS
DOC
IAWP
MAWP
APCO
MPPOA

"It's so easy to be complimentary,
It takes more energy to be angry."
All it is is a "role" we are playing.

Too often we respond/react to
exactly the stereotypes they put
us in.

Why don't we take the initiative
in providing good info to Press.
Traditional attitude is biggest enemy.
"We've always done it this way."

**PUBLIC
SAFETY**

**Minnesota
Department
of**

DEPARTMENT OF PUBLIC SAFETY

The mission of the Department of Public Safety is the enhancement and maintenance of safety for all persons within the State of Minnesota through education, regulation and enforcement.

The Department administers and enforces laws relating to drivers, vehicles, traffic, liquor, natural and man-made disasters, criminal activities and fire risks.

Public Safety is comprised of eight operating divisions and five Ancillary Services.

Bureau of Criminal Apprehension

Assists local law enforcement officials and other peace officers of the state in the apprehension of criminals.

Investigators are placed throughout the state to assist in investigations of major crimes, including the illegal sale or possession of prohibited drugs, homicide, burglary, and organized criminal activities.

Conducts police science training courses, scientific examination of crime scenes, and laboratory analysis of evidence.

Maintains a criminal justice information and telecommunications system, and provides statistical information relating to crime and crime trends in Minnesota.

Capitol Complex Security

Provides safety and protection of people and property on the Capitol grounds.

Driver and Vehicle Services

Registers motor vehicles, issues vehicle ownership certificates, licenses motor vehicle dealers and registers bicycles.

Tests, evaluates and licenses all drivers, maintains records of all moving violations and accidents, records locations of every reported accident and assists in driver education efforts.

In 1987, Driver and Vehicle Services reported that there were more than 4 million licensed motor vehicles in the state (including motorcycles, off-road vehicles and mopeds), and more than 3.1 million licensed drivers.

Emergency Management

Responsible for planning and coordinating emergency operations within the state for all natural and man-made disasters.

Coordinate the actions of all local and area agencies that have the capability and responsibility for emergency response.

Offers support in the form of technology and equipment, and funds the emergency planning efforts of local units of government.

Maintains a duty officer 24 hours a day to respond to emergency problems.

Fire Marshal

Inspects public and private facilities for fire safety.

Investigates suspicious and incendiary fires, fire fatalities and large loss fires.

Processes and maintains a fire incident reporting system containing fire data to determine problem fire areas.

Provides education, inspection and training programs for fire prevention.

Liquor Control

Issues and approves liquor licenses.

Has the authority to suspend or revoke liquor licenses, regulates liquor advertising, assures purity of content of intoxicating liquor, assures accurate content labeling.

Provides investigative assistance to local law enforcement agencies.

Maintains a resale price filing schedule by wholesalers and importers.

Pipeline Safety

Established in 1987. The primary functions are to establish and maintain an emergency notification center and an on-going damage prevention program.

Assists local government in developing emergency response plans.

Gathers technical data and pipeline release data, and conduct safety inspections of all pipeline facilities as authorized by the U.S. Department of Transportation.

State Patrol

Primarily responsible for enforcing all laws relating to the safe and proper use of state trunk highways and directing traffic where necessary on state trunk highways. Provides emergency first aid and traffic control in motor vehicle accident situations.

Serves warrants, legal documents and orders of the Commissioner of Public Safety.

Provides safety inspections and enforcement regarding commercial vehicles.

Provides security and protective service for the Governor and other state officials.

Provides traffic safety education through presentations to schools, civic and community organizations.

ANCILLARY SERVICES

Crime Victims Reparation/Crime Victim Ombudsman

Provides direct financial assistance to those who have been injured as the direct result of a crime.

Offers assistance to victims of crimes who believe their rights have been violated.

Children's Trust Fund

Provides statewide coordination of child abuse information and education.

Provides funding for primary and secondary programs on child abuse prevention to local communities.

Hazardous Substance

Provides for statewide hazardous substance notification under State Emergency Response Commission and federal requirements.

Develops training criteria for first responders.

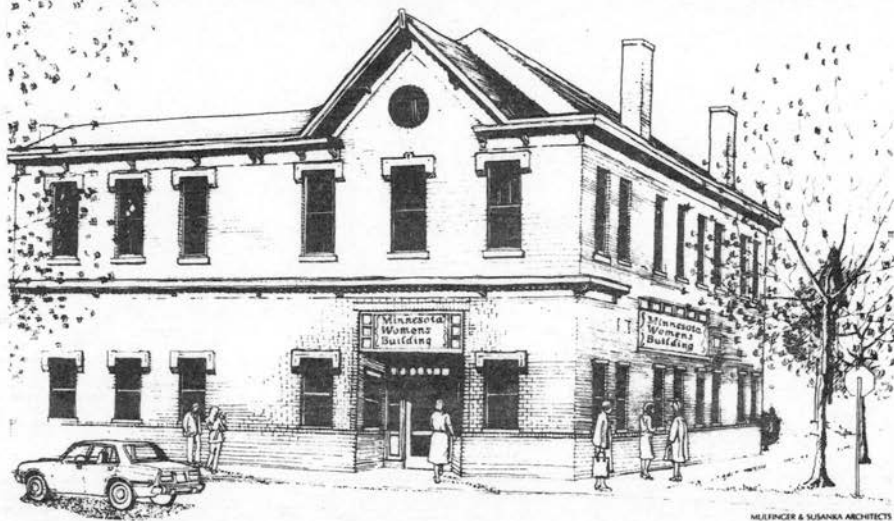
Peace Officer Standards and Training (POST)
Licenses all peace officers in the State of Minnesota. Certifies all police training courses for continuing education.

Private Detective Board

Provides licensing standards and procedures for all private detective agencies and security guard services.

You want to know what's buzzing among Minnesota's most interesting women . . . they've become a part of

The Minnesota Women's Building



This may be your last opportunity to join them. Clip and mail the attached pledge card: consider becoming a Founder.

The Minnesota Women's Building is a joint effort by the League of Women Voters of Minnesota, Chrysalis, A Center for Women, and the Minnesota Women's Consortium. For further information, please call 228-0338.

The Minnesota Women's Building

YES! I would like to participate in making our building a reality.

- Lead Gift \$10,000 and over
An opportunity to name a significant building space
- Cornerstone \$5,000 to \$9,999
A commemorative plaque on cornerstones
- Buy-A-Brick \$1,000 to \$4,999
A brick in your name
- Founders \$100,000 to \$999,999
- Contributors up to \$99,999

Name _____

Address _____

City _____ State _____

Zip _____

Telephone _____ Total Amount of Contribution _____

Please make check payable to: *The Minnesota Women's Building Fund/Minnesota Women's Consortium* and mail to *The Minnesota Women's Building*, c/o *The Minnesota Women's Consortium*, 316 West University Avenue, St. Paul, Minnesota 55103. All contributions are tax deductible.

Here's some, more to come. Please call me to finalize my pledge arrangements.

The Minnesota Women's Building
316 West University Avenue
St. Paul, MN 55103

Non-Profit Org.
U.S. Postage
PAID
Permit No. 7472
St. Paul, MN

APPLICATION FOR MEMBERSHIP

NAME _____

HOME ADDRESS _____

HOME PHONE _____

EMPLOYING AGENCY _____

AGENCY ADDRESS _____

PRESENT JOB TITLE OR RANK _____ P.O.S.T. # _____

Check appropriate box:

- () ACTIVE \$15
- () ASSOCIATE \$12
- () SUSTAINING \$12

Mail with annual dues to:

GRACE TESTER, TREASURER
 1897 St. Clair Ave.
 St. Paul, MN 55105



**JOIN THE
 MINNESOTA
 ASSOCIATION OF
 WOMEN POLICE**



-
- Promote M.A.W.P Goals
 - P.O.S.T. Training
 - Professional Contacts
 - Mutual Support
-

In Minnesota, all peace officers must be licensed through the Peace Officers Standards and Training Board. Licensed officers must receive 48 hours of accredited in-service training every three years to maintain their license. M.A.W.P. offers such P.O.S.T. certified training.



The Minnesota Association of Women Police was originated in 1955 as a non-profit, incorporated organization devoted to furthering the education, training, and utilization of women police and encouraging professionalism in law enforcement.

The M.A.W.P. sponsors P.O.S.T. approved training and conducts Spring and Fall membership meetings.

Many progressive departments striving to use police personnel to greatest advantage are hiring more women and integrating them into all areas of service and management. The modern police department makes few distinctions in assigning men and women officers, utilizing them interchangeably in all areas.

Police departments can function more effectively and are more responsive to the needs of the people if they are more representative of the community they serve.

Women officers have opportunity through membership in the M.A.W.P. to draw upon the experience and support of other women officers who have encountered situations such as discriminatory practices in hiring, promotions, sexual harassment, and personal conflicts.

M.A.W.P. OBJECTIVES

- To promote a closer official and personal relationship among women and men in law enforcement throughout the State of Minnesota and elsewhere.
- To emphasize the need, increase the opportunity, and expand the duties of women in all aspects of law enforcement.
- To uphold high standards of professionalism and job performance in law enforcement.
- To encourage continual exchange of contemporary police information and techniques.
- To support efforts to eliminate discrimination in law enforcement on the basis of sex at recruitment, selection, and promotional levels.
- To increase community awareness of the role of women in law enforcement.

M.A.W.P. FUNCTIONS

- Sponsors P.O.S.T. approved training.
- Conducts Spring and Fall membership meetings.
- Publishes a quarterly newsletter.
- Recognizes outstanding achievements by women officers.
- Awards scholarships to women students for law enforcement skills training.
- Provides opportunities for networking and professional contacts with other law enforcement personnel.

MEMBERSHIPS

ACTIVE: All full-time law enforcement officers with power of arrest who are paid by public funds.

ASSOCIATE: All retired and part-time officers paid by public funds, law enforcement students, and any person who by training, experience, or other professional attainments in law enforcement, including persons publicly employed in other areas of law enforcement and persons privately employed as security officers.

SUSTAINING: Any individual or group interested in fostering the aims and objectives of the M.A.W.P.

The M.A.W.P. is an affiliate of the International Association of Women Police and part of the Seventh Region of the I.A.W.P. The I.A.W.P. includes members from the U.S., Canada, and Overseas. Members of the M.A.W.P. are encouraged to join the I.A.W.P.

Women in Uniform

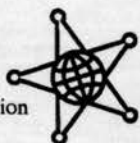
May 12-13, 1988

Program Notes and Seminar Instructions

- * **Tickets are required** for all meals (two lunches and banquet). If you did not receive tickets at registration, see the treasurer at the registration table.
- * A **message board** is located near the registration table. Phone messages and updated information will be posted, so please check the message board periodically. Persons leaving messages for seminar participants can phone (612) 379-8888 and ask for the Women in Uniform message center.
- * A **telephone** with an outside line is available near the registration table (placement of outgoing long-distance calls is not possible from this phone).
- * All sessions, workshops, and the banquet will be held in the Ballroom. Thursday's lunch will be served in the Hubert H. Humphrey Room on the second floor, west end. Friday's lunch will be held in the Pre-Function Room next to the Ballroom.
- * **Smoking** is prohibited during seminar sessions but is permissible at the refreshment stations. Smoking tables during meals will be noted as such by placement of ashtrays on half of the tables.
- * Each seminar participant's nametag is coded with a colored dot to signify affiliation:
 - Red dot = Fire services
 - Blue dot = Law enforcement
 - Green dot = Military
 - Orange dot = Corrections
 - Yellow dot = Communications
- * **If you have questions or concerns**, please contact any conference committee member who is identifiable by wearing a yellow ribbon on their nametag.
- * All speakers and presenters are identifiable by the red ribbon on their nametag.
- * MAWP board members are identifiable by the blue ribbon on their nametag.
- * The *1987 Women's Directory* is on sale for \$2.50 (plus tax) at the registration table.
- * Copies of requested materials will be made available at the registration table under the "You Asked For It" sign.
- * A videotape of the May 1, 1988, *60 Minutes* segment on corrections in Minnesota is available for viewing (location and time to be announced).
- * For the **Hospitality Room** location, check at either the registration table or the hotel desk.
- * For those staying at the Radisson University Hotel, please note that **checkout time** is 12:00 noon.
- * If you wish to participate in "**Night Life in the Twin Cities**", see Julie Kurtz at the registration table at the close of the conference. Plans include a light dinner and visiting area "night life" in the "warehouse district" of Minneapolis. Suggestions are also welcomed.



The 7th Region of the
International Association
of Women Police



Women in Uniform Program

Wednesday, May 11, 1988

- 5:00 - 10:00 p.m. **Early Conference Registration**
- 5:00 - 1:00 a.m. **Hospitality Room** (sponsored by the Minnesota Police and Peace Officers Association)
- 7:05 - 10:00 p.m. **Minnesota Twins Game** (against Milwaukee), Hubert H. Humphrey Metrodome

Thursday, May 12, 1988

- 8:00 - 9:00 a.m. **Registration and Workshop Sign-Up**
*Coffee/rolls
*Vendors' tables
- 9:00 - 9:45 a.m. **Opening Ceremonies - Ballroom**
*Copland's "Fanfare for the Common Man" (person), Brass Ensemble
*Color Guard
*National Anthem
 Shirley Witherspoon, a cappella
*Welcome and Acknowledgments
 Nicholas Barbatsis, University of Minnesota Assistant Vice President
 Gary Wilson, University of Minnesota Police Chief
 Orville Pung, Minnesota Department of Corrections Commissioner
 Lurline Baker-Kent, Minnesota Department of Corrections Assistant Commissioner
 Paul Tschida, Minnesota Department of Public Safety Commissioner
 Rina McManus, Minnesota Department of Public Safety Deputy Commissioner
 Susanne Hackett, MAWP President
 Linda Cherry, IAWP Regional Director
- 9:45 - 10:00 a.m. **Break and Refreshments**
- 10:00 - 11:30 a.m. **General Assembly**
*Keynote Speaker *Penny Harrington*, former Police Chief, Portland, Oregon. First woman police chief of a major metropolitan police department who left under controversy ... her thoughts, her observations, her reaction, her story.
- 11:30 - 1:00 p.m. **Luncheon - Hubert H. Humphrey Room**
*Female jazz vocalists *Women Who Cook!*

- 1:00 - 2:30 p.m. **Workshops** (select one) - Ballroom
 **"AIDS Epidemic" -- How we, as public service agents, are addressing the "Reality of AIDS."
Earl Pike, Minnesota AIDS Project
 **"The Set-Up" -- Open discussion of the "hidden agendas," the subtleties, and the "gut"
 feeling of when we sense a "set-up" in our profession.
Gail Plewacki, KARE 11 and former Minneapolis Police Officer
 **"Human Relations in Public Service" -- An examination of the intricacies, necessity, and
 impact of effective human relations in public service.
*Phil Stuemke, St. Louis Park Police Department and Bloomington Law Enforcement
 Training Center*
Tom Wilske, Sergeant of Training, Airport Police Department
- 2:30 - 2:45 p.m. **Break and Refreshments**
- 2:45 - 4:15 p.m. **Workshops Repeated**
- 4:15 - 6:00 p.m. **MAWP Membership Meeting**
Hospitality Room 765
- 6:00 - 7:00 p.m. **Social Hour** - Ballroom
 *Cash bar
 **"Golden Strings" five-piece strolling violins
- 7:00 - 9:00 p.m. **Banquet** - Ballroom
 *Woman Police Officer of the Year Award
 *Karen Rice Memorial Scholarship, presented by *Susanne Hackett*, MAWP President
 *Acknowledgments
 **"Golden Strings"
 *Coupe Romanoff served by male police officers
- 9:00 - 1:00 a.m. **Hospitality Room** (sponsored by the Minnesota Police and Peace Officers Association)

Friday, May 13, 1988

- 8:30 - 9:00 a.m. **Registration and Workshop Sign-Up**
 *Coffee/rolls
 *Vendors' tables
- 9:00 - 10:25 a.m. **General Assembly** - Ballroom
 ✓**"Femalese/Malese ... Playing the Game" - Image and Power Projection
 How to survive and succeed as women in non-traditional roles through power and image
 projection, addressing dynamics in the "good ol' boy" network, "games mother never taught
 me" and "femalese/malese."
Ember Reichgott, Minnesota State Senator
The Honorable LaJune Thomas Lange, Hennepin County District Court Judge
- 10:25 - 10:40 a.m. **Break and Refreshments**

10:40 - 12:00 p.m.

Workshops (select one)

*"Life After the Uniform..." - Career Development and Networking -- Self-assessment by identifying and developing one's professional and personal skills for future career planning.

Rina McManus, Minnesota Department of Public Safety Deputy Commissioner

Linda Finney, Minnesota Bureau of Criminal Apprehension Special Agent

✓*"Who's Suing Who?" - Civil Liabilities -- Identifying the liabilities and examining one's options in order to rectify professional inequities, harassment, and discrimination.

Mary Ann Bernard, Special Assistant Attorney General, Minnesota Attorney General's Office, Tort Claims Division

*"Relationships + Family = Career?" -- The complexities in our personal lives which are compounded by the stresses in shift work, the uniform, and the choosing of a non-traditional profession.

Dr. Robin King Cooper, Psychologist

12:00 - 1:30 p.m.

Luncheon - Pre-Function Room

**Susan Vass*, Comedienne from "What's So Funny About Being Female?", Dudley Riggs, Etc.

1:30 - 3:00 p.m.

General Assembly/Panel and Discussion - Ballroom

Panel discussion and open forum on affirmative action and related issues.

Moderator *Jan Smaby*, Spring Hill Center President and Co-Host of KTCA's Almanac Show

Steve Cooper, Minnesota Department of Human Rights Commissioner

Lurline Baker-Kent, Minnesota Department of Corrections Assistant Commissioner

Penny Harrington, Former Police Chief, Portland, Oregon

Eli Miletich, Chief of Police, Duluth, Minnesota

3:00 - 3:30 p.m.

Adjournment

Evening

Night Life in the Twin Cities

Women in Uniform

May 12-13, 1988

Speakers and Presenters

Lurline Baker-Kent, Assistant Commissioner
Minnesota Department of Corrections
300 Bigelow Building, 450 North Syndicate Street
St. Paul, Minnesota 55104
(612) 642-0275

Nicholas K. Barbatsis, Assistant Vice President - Student Affairs
University of Minnesota, 9 Morrill Hall
Minneapolis, Minnesota 55414
(612) 624-0542

Mary Ann Bernard, Special Assistant Attorney General
Minnesota Attorney General's Office, Tort Claims Division
Transportation Building, John Ireland Boulevard
St. Paul, Minnesota 55155
(612) 296-8404

Dr. Robin King Cooper, Psychologist
Psychological Associates
5524 Columbus
Minneapolis, Minnesota 55417
(612) 690-1810

Steve Cooper, Commissioner
Minnesota Department of Human Rights
5th Floor Bremer Tower
7th and Minnesota Streets
St. Paul, Minnesota 55101
(612) 296-5665

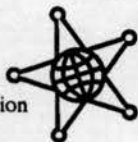
Linda Finney, Special Agent
Minnesota Bureau of Criminal Apprehension
1246 University Avenue
St. Paul, Minnesota 55104
(612) 642-0660

Penny Harrington, Former Chief of Police, Portland, Oregon
2192 Martin Drive, Suite 280
Irvine, California 92715
(714) 752-8020

Honorable LaJune Thomas Lange
Hennepin County District Court Judge
951C Government Center
Minneapolis, Minnesota 55487
(612) 348-2177



The 7th Region of the
International Association
of Women Police



Rina McManus, Deputy Commissioner
Minnesota Department of Public Safety
Transportation Building, John Ireland Boulevard
St. Paul, Minnesota 55155
(612) 296-6642

Eli Miletich, Chief
Duluth Police Department
c/o City Hall
Duluth, Minnesota 55802
(218) 723-3224

Earl Pike
Minnesota AIDS Project
2025 Nicollet, Suite 200
Minneapolis, Minnesota 55404
(612) 870-7773

Gail Plewacki
KARE 11
8811 Olson Memorial Highway
Golden Valley, Minnesota 55427
(612) 546-1111

Orville Pung, Commissioner
Minnesota Department of Corrections
300 Bigelow Building, 450 North Syndicate Street
St. Paul, Minnesota 55104
(612) 642-0282

Honorable Ember Reichgott
Minnesota State Senator
G-9 Capitol Building
St. Paul, Minnesota 55155
(612) 296-2889

Jan Smaby, President
Spring Hill (also Co-Host, KTCA's Almanac Show)
Post Office Box 288
Wayzata, Minnesota 55391
(612) 473-0221

Phil Stuemke
St. Louis Park Police Department and
Bloomington Law Enforcement Training Center
8900 Portland Avenue South
Bloomington, Minnesota 55420
(612) 341-7027

Paul Tschida, Commissioner
Minnesota Department of Public Safety
Transportation Building, John Ireland Building
St. Paul, Minnesota 55155
(612) 296-6642

Honorable Rosalie Wahl
Associate Justice, Minnesota Supreme Court
227 Capitol Building
St. Paul, Minnesota 55155
(612) 296-4033

Sergeant Tom Wilske
Airport Police Department
Minneapolis-St. Paul International Airport
St. Paul, Minnesota 55111
(612) 726-5115

Gary Wilson, Chief
University of Minnesota Police Department
2030 University Avenue Southeast
Minneapolis, Minnesota 55410
(612) 624-3550

Women in Uniform

May 12-13, 1988

Moderators

Janet Entzel, Affirmative Action Officer
Minnesota Department of Corrections

Susanne Hackett, Trooper
Minnesota State Patrol, Department of Public Safety

Julie Kurtz, Corporal
University of Minnesota Police Department

Raenette Manderfeld, Officer
Corcoran Police Department

Jill McRae, Officer
Medina Police Department

Judy Sullivan, President
Minnesota State Patrol and Associated Public Safety
Communications Officers, Inc. President

Joan Thorsten, Officer
Minnesota Correctional Facility-Stillwater

Mary Scully Whitaker, Planning for Women Offenders Director
Minnesota Department of Corrections

Donetta Wickstrom, Sergeant
Duluth Police Department

Color Guard

Ruth Anderson, Captain
Department of Military Affairs

Debi Backdahl, Deputy
Crow Wing County Sheriff's Office

Jo Anne Benson, Officer
University of Minnesota Police Department

Renee Brunner, Officer
Minnesota Correctional Facility-Stillwater

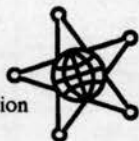
Denise DeMars, Deputy State Fire Marshal
Minnesota Department of Public Safety

Cheri Frandrup, Trooper
Minnesota State Patrol, Department of Public Safety

David Stoudt, Lieutenant
Minnesota State Patrol, Department of Public Safety



The 7th Region of the
International Association
of Women Police



Women in Uniform

May 12-13, 1988

Entertainment

"Golden Strings"

Cliff Brunzell
5156 Russell Avenue South
Minneapolis, Minnesota 55410
(612) 926-7837

University of Minnesota Brass Ensemble

Chuck Sommers
226 Ferguson Hall
Minneapolis, Minnesota 55414
(612) 331-3057

Susan Vass

"What's So Funny About Being Female?"
2018 Kenwood Drive
Maplewood, Minnesota 55117
(612) 774-0200

Shirley Witherspoon

3101 - 12th Avenue South, #1
Minneapolis, Minnesota 55407
(612) 724-6857

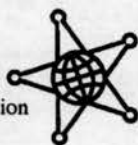
Women Who Cook!

Marian Moore, Producer
89 Lions Foundation
P.O. Box 25075
Minneapolis, Minnesota 55458
(612) 377-2701

Women Who Cook! will be performing in concert at O'Shaughnessy Auditorium at St. Catherine's College in St. Paul on Saturday, July 16, to raise funds for their upcoming tour of the Soviet Union. Performances are at 7 and 10 p.m. Contact O'Shaughnessy Auditorium at (612) 690-6700 for ticket information.



The 7th Region of the
International Association
of Women Police



Women in Uniform

May 12-13, 1988

Conference Committees

Steering Committee:

Lurline Baker-Kent, Assistant Commissioner
Minnesota Department of Corrections
Susanne Hackett, Trooper
Minnesota State Patrol - Minnesota Department of Public Safety,
and Minnesota Association of Women Police (MAWP) President
Julie Kurtz, Corporal (conference coordinator)
University of Minnesota Police Department
Rina McManus, Deputy Commissioner
Minnesota Department of Public Safety
Joan Thorsten, Officer
Minnesota Correctional Facility-Stillwater

Operations Committee:

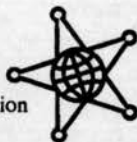
Jo Anne Benson, Officer
University of Minnesota Police Department
Linda Cherry, Officer
IAWP Seventh Region Coordinator
Raenette Manderfeld, Officer
Corcoran Police Department and MAWP Vice President
Jill McRae, Officer
Medina Police Department and MAWP Editor
Grace Tester, Lieutenant
Ramsey County Sheriff's Office and MAWP Treasurer
Donetta Wickstrom, Sergeant
Duluth Police Department

Special Thanks:

Ken Bentfield, Director of Information Systems Management,
Minnesota Department of Public Safety
Dennis Flaherty, Minnesota Police and Peace Officers Association
Evans Grisby, Media Relations Officer, Department of Public Safety
Ken MacLean and *Mike O'Gorman*, Special Agents, Minnesota
Bureau of Criminal Apprehension
Minnesota Correctional Facility-Shakopee
Minnesota Correctional Facility-Stillwater
Minnesota Correctional Industries
Alex Sloan, Officer, University of Minnesota Police Department
Judy Sullivan, Associated Public Safety Communications Officers, Inc.
Lisa True, Radisson University Hotel



The 7th Region of the
International Association
of Women Police



Women in Uniform

May 12-13, 1988

Employment Statistics

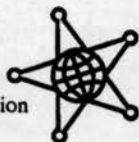
There were 7,000 licensed police officers in 1987 in Minnesota. Of this figure, 325 were women (4.6 percent). Nationally, in 1986 women comprised 10 percent of the 500,000 police officers in all U.S. major metropolitan police departments. Therefore, Minnesota falls short of the national percentage of women police officers. We have our work cut out for us.

There are 1,850 career firefighters in Minnesota. Of this figure, 12 are women (.7 percent).

Currently, 16 percent of the correctional counselors employed by the Minnesota Department of Corrections are women. Since January 1, 1987, there have been 96 promotions -- 22 to women (23 percent). Also since that date, 32 percent of the total new correctional counselors hired have been women.



The 7th Region of the
International Association
of Women Police



Women in Uniform

May 12-13, 1988

Law Enforcement Officers Killed in the Line of Duty

During 1986 the number of law enforcement officers killed in the line of duty totaled 66 (65 in 1987). Officer deaths were recorded by law enforcement agencies in 24 states and Puerto Rico. Of the victims, 34 were employed by city police departments; 19 by county sheriff's offices; five by state agencies; and four each by federal and territorial law enforcement agencies.

Of the 66 officers killed in 1986, 65 were male and one was female. Five of the victims were under the age of 25; 20 were between the ages of 25 and 30; 18 were ages 31 through 40; and 23 were over 40 years of age. Fifty-nine of the slain officers were white and seven were black.

The average number of years of service for all officers killed during 1986 was nine years. Twenty-three officers had over 10 years of law enforcement experience while two had less than one year of service.

Twenty-six officers were slain during arrest situations, accounting for more line-of-duty deaths than any other circumstance. A further breakdown of these situations shows 10 officers were killed by robbery or burglary suspects, seven by suspects during drug-related arrests, and nine by assailants suspected of other crimes.

Patrol officers accounted for 62 percent of the victims in 1986. Of the 41 officers killed while on patrol, 31 were assigned to one-officer vehicles, nine to two-officer vehicles, and one to foot patrol. Nineteen victims were on detective or special assignment and six were off-duty but acting in an official capacity.

Sixty of the 66 murders of law enforcement officers in 1986 have been cleared. Of the 86 suspects identified in connection with the slayings, 83 were male and three were female. Fifty-one of the suspects were white and 32 were black. The race was not reported for the remaining three. Sixty percent (52) of the assailants were under the age of 30.

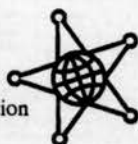
Sixty-nine percent of the assailants identified had previous arrests and 30 percent a prior conviction. The records show that 23 suspects had previous arrests for drug-related violations, 20 for crimes of violence, and 17 for weapons violations.

At the time the officers were slain, 22 percent of the suspects were on probation or parole. Twenty percent had been granted leniency in connection with a previous conviction.

Disposition data for the years 1975 through 1984, the most recent years for which these statistics are available, show that 1,333 persons have been identified as being involved in the murders of 1,060 law enforcement officers. Of those assailants identified, there were 1,120



The 7th Region of the
International Association
of Women Police



persons arrested and charged with murder; 163 were justifiably killed; 45 committed suicide; and five remain at large.

Among those persons charged for whom final disposition is known, 73 percent were found guilty of murder; eight percent were found guilty of a lesser offense related to murder; and five percent were found guilty of some crime other than murder. Ten percent of the suspects had the charges against them dismissed and three percent of those charged were committed to psychiatric institutions. The remaining one percent of the persons charged with the officers' murders died in custody before final dispositions were determined.

Available data revealed that 144 of the 797 offenders found guilty of murder were sentenced to death, 431 received life imprisonment, and 211 were given prison terms ranging from two months to 1,000 years. Eight received indeterminate sentences and three were placed on probation.

**Firearms claimed the lives of 92 percent of the officers
killed in the line of duty from 1977 through 1986.**

Reprinted from *Uniform Crime Reports 1986 -
Law Enforcement Officers Killed and Assaulted*,
U.S. Department of Justice,
Federal Bureau of Investigation.

Women in Uniform Seminar Evaluation

May 12-13, 1988 -- Minneapolis, Minnesota

The **Women In Uniform Seminar** was intended to be educational, interesting, entertaining, and of value to participants in their professional and personal lives. We would appreciate your taking a few moments to complete this evaluation and let us know how we did. Please place your completed evaluation in the box provided at the registration table or mail it to Corporal Julie Kurtz, University of Minnesota Police Department, 2030 University Avenue Southeast, Minneapolis, Minnesota 55414. Thank you.

General Assemblies:

| | Excellent | Good | Average | Poor | Comments |
|--|-----------|------|---------|------|----------|
| *Keynote Presentation (Penny Harrington, Former Police Chief, Portland Oregon) | | | | | |
| *Femalese/Malese ... Playing the Game Image and Power Projection | | | | | |
| *Panel and Discussion on Affirmative Action and Related Issues | | | | | |

Workshops:

| | Excellent | Good | Average | Poor | Comments |
|---|-----------|------|---------|------|----------|
| *AIDS Epidemic | | | | | |
| *The Set-Up | | | | | |
| *Human Relations in Public Service | | | | | |
| *Life After the Uniform ... Career Development and Networking | | | | | |
| *Who's Suing Who? Civil Liabilities | | | | | |
| *Relationships & Family = Career? | | | | | |

(over)

Facility/Environment:

| | Excellent | Good | Average | Poor | Comments |
|--------------------------------|-----------|------|---------|------|----------|
| *Downtown Minneapolis Location | | | | | |
| *Radisson University Hotel | | | | | |
| *Seminar Room Set-Up | | | | | |
| *Meals | | | | | |
| *Banquet Program | | | | | |
| *Awards | | | | | |
| *Entertainment | | | | | |
| *Hospitality Room | | | | | |

Overall Seminar Evaluation:

| | Excellent | Good | Average | Poor | Comments |
|---|-----------|------|---------|------|----------|
| *Level of Training Provided | | | | | |
| *Registration Cost | | | | | |
| *Seminar Coordination | | | | | |
| *Informational Handouts/Printed Materials | | | | | |

Would you like to see the **Women In Uniform Seminar** become an annual event? _____ Yes _____ No

Additional Comments:



Minnesota Association of Women Police

LOCAL ACTIVITIES DIRECTORY

BELL MUSEUM OF NATURAL HISTORY
17th & University Ave SE, U of M
624-1852

CANTERBURY DOWNS, Hwy 101,
Shakopee, 445-RACE

COMO PARK ZOO, Midway Pkwy &
Kaufman Dr, St Paul, 488-4041

DUDLEY RIGGS' ETC., 1430 Wash.
Ave So, Mpls., 332-6620. Comedy:
"What's So Funny About Being
Female"

FORT SNELLING, Hwys. 5 & 55,
St Paul, 726-9430

FOSHAY TOWER OBSERVATION DECK
AND MUSEUM, 821 Marquette Ave.
Mpls, 341-2522

FUNNY BONE COMEDY CLUB, 2911
Hennepin Ave., Mpls., 824-1981

GUTHRIE THEATER, Vineland Place,
Mpls., 377-2224, May 13-15th:
Whoopi Goldberg.

HEARTTHROB CAFE AND PHILADELPHIA
BANDSTAND, St Paul Center, 30 E
8th St., 224-2783.

MEDINA BALLROOM, 500 Hwy 55, Hamel,
478-6661, May 13th: Whitesidewalls

MINNESOTA MUSEUM OF ART, 305 St Peter
Street, St Paul, 292-4355.

MINNESOTA LANDSCAPE ARBORETUM,
3675 Arboretum Dr., Chanhassen
443-2460.

MINNESOTA ZOO, Hwy 77, Apple Valley,
432-9000.

PADELFORD PACKET BOAT COMPANY
Harriet Island, St Paul, 227-1100.

RUPERT'S, 5410 Wayzata Blvd.,
Golden Valley, 544-5035. Orchestra
plays Jazz, Pop and R&B favorites.

VALLEY FAIR FAMILY AMUSEMENT PARK,
Hwy 101, Shakopee, 445-7600.
Open 10 AM, May 14th & 15th.

WALKER ART CENTER, Vineland Place,
Mpls., 375-7610.

WOOD LAKE NATURE CENTER, South of
66th St. on Lyndale Ave., Richfield,
861-4507.

SHOPPING !!!!!

THE CONSERVATORY, 800 Nicollet Mall,
Mpls.

Eden Prairie & Burnsville Centers,
Brookdale, Ridgedale, Rosedale, and
Southdale and Maplewood Malls.

RIVERPLACE, 1 SE Main St., Mpls.
378-0154.

TOWN SQUARE, Downtown St. Paul.

FOR A MORE COMPLETE LISTING OF
CURRENT EVENTS IN THE METRO AREA,
REFER TO THE MAY ISSUE OF " MPLS.,
ST. PAUL " MAGAZINE.



Minnesota Association of Women Police

VENDORS

* MINNESOTA ASSOCIATION OF WOMEN POLICE

Treasurer - Grace Tester
1897 St. Clair Avenue
St. Paul, MN. 55105
292-3698

* DEPARTMENT OF CORRECTIONS - OAK PARK HEIGHTS FACILITY
PRISON INDUSTRIES

Guy Piras
Minnesota Correctional Facility
Oak Park Heights
Box 10, Stillwater, MN. 55082
779-1496

* DEPARTMENT OF CORRECTIONS - ST. CLOUD FACILITY
PRISON INDUSTRIES

Mr. Swanson
Box B, St. Cloud, MN. 56302
255-5000

* UNIFORMS UNLIMITED

2220 Lyndale Avenue South
Minneapolis, MN. 55405
377-0011

* MINNESOTA WOMEN'S CONSORTIUM

316 University Avenue West
St. Paul, MN. 55103
228-0338