



## League of Women Voters of Minnesota Records

### **Copyright Notice:**

This material may be protected by copyright law (U.S. Code, Title 17). Researchers are liable for any infringement. For more information, visit [www.mnhs.org/copyright](http://www.mnhs.org/copyright).

Sandra Bates  
Manitowoc I WV

Wisconsin

Know about program

Common Cause  
call + update

Voted - Mr.

## SEMAC

- vo-techs doing energy A-V series
  - Winona State - G. Tobin -  
energy conservation video tape
- 

Bruce Clark

- Esther Doughty
- 

Jim Wylie

- Dennis Jacobs
- 

American Water Resources Assoc

- National Wildlife  
Federation Conservation  
Directory

- World Environmental  
Directory (published  
by Business Publishers,  
Inc.)
- 

Citizens Against Throwaways

- Solar Options Leasing
- 

Hibbing Community College

- Minnesota North County, Inc.
- 

Technical Systems Inc.

- Energy Associates, St. Paul
- 

? Joint Religious Legislative  
Coalition ? (booklet)



Files

## LEAGUE OF WOMEN VOTERS OF MINNESOTA

555 WABASHA • ST. PAUL, MINNESOTA 55102 • TELEPHONE (612) 224-5445

April 23, 1979

Margaret Post  
1874 West Skillman  
Roseville, MN 55113

Dear Margaret:

At its April tenth Board meeting, the members of the Board of Directors of the League of Women Voters of Minnesota voted unanimously to commend you and Kathie Gilder for the outstanding work you did in assembling Energy: A Guide to Information Resources in Minnesota.

The Directory provides a tremendous service to the State of Minnesota and its citizens. It is an impressive achievement that reflects credit on you and the League of Women Voters of Minnesota.

Sincerely,

Helene Borg, President  
For The Board of Directors  
League of Women Voters of Minnesota

B:M

Same to Kathie Gilder



Platter star copy this for all "Boarders"  
Please put this in the Energy Grant file.

Thanks  
Emily Marge

Pat - I found this  
in the  
masters file -  
lobbying kit  
Joyce



## LEAGUE OF WOMEN VOTERS OF MINNESOTA

555 WABASHA • ST. PAUL, MINNESOTA 55102 • TELEPHONE (612) 224-5445

To: Florence Chichester  
From: Margaret Post, Energy Education Project Co-Chair  
Re: LWVMN Phase II Energy Education Project Report  
Date: January 29, 1979

Following is a brief listing of activities performed by Judy Burke and Margaret Post under Phase II of the LWVMN Energy Education Project:

Meetings: Organized a slide tape viewing of alternative energies slide show in Minnesota for Minnesota Energy Agency personnel and the metropolitan library network's audio-visual director.

Shared education experiences with Minnesota solar organization.  
Attended statewide solar meetings.  
Attended underground housing meetings.  
Met with Senator Durenberger aide to discuss energy education needs in Minnesota.

Films: Viewed energy films at the Minnesota Education Audio-Visual Center.  
Viewed films at University of Minnesota Audio-Visual Center.  
Viewed energy films from Time-Life.  
Advertised existing film program to teachers through Minnesota Department of Education monthly "Update." (Will send copy when available.)  
Purchased slide-tape show on alternative sources of energy in Minnesota.  
Purchased slide-tape projector.  
Advertised slide-tape show in newsletter and Board Memo.  
Requested National Geographic energy films for review.

Newsletter: Designed and ordered paper.  
Began mailings list update.  
Gathered information and wrote 1st newsletter.  
Mailed newsletter to 200.

Directory: Got bids for publication of Minnesota Energy Resource Directory.  
Received \$8566 contract from Minnesota Energy Agency to have 2500 copies made.  
Made 85 copies of portions of directory for local League presidents and others needing information now.

Placemat: Corresponded with LWVUS for approval and editorial assistance with energy placemat.  
Met with salesman who will show placemat at annual sales meeting February 11.

Miscellaneous: Wrote letter to editor applauding energy article. Published.  
Copy enclosed.

Over

Internal LWV      Reported on project in Board Memos and VOTER and to state  
Phase II efforts:      Board.  
Wrote Board/grant management policy for Board approval  
                                 (enclosed).



LEAGUE OF WOMEN VOTERS  
OF MINNESOTA

PHONE (612) 224-5445  
555 WABASHA • ST PAUL, MINNESOTA 55102

# news release

For more information contact:

Judy Medelman 224-5445

*32 releases*

*8/25 Metro papers, North Sub., South, Sub, Tri-County,  
South Central, Northern Mn., Fargo-Moorhead area*

*daily &  
weekly*

Community leaders in the seven-county Metropolitan area are invited to attend an afternoon workshop on Friday, September 16, entitled "How Your Community Can Begin Energy Action."

Sponsored by the League of Women Voters of Minnesota, the meeting will discuss present programs and future plans of the Minnesota Energy Agency, the energy supply situation, community action and group "action on energy" programs.

Featured speaker will be Dixie Diehl of the Minnesota Energy Agency. Ms. Diehl's presentation is expected to be of particular interest to public officials, landlords, environmental groups and community organizations such as the Jaycees and Chamber of Commerce.

The Workshop on Energy will take place from one to two p.m. on September 16 at the Oak Grove Presbyterian Church, 10155 Penn Avenue South, Bloomington. Registration is open to the public, and persons interested in attending should contact the League of Women Voters of Minnesota at 224-5445.



## LEAGUE OF WOMEN VOTERS OF MINNESOTA

555 WABASHA • ST. PAUL, MINNESOTA 55102 • TELEPHONE (612) 224-5445

To: Workshop Participants  
From: Margaret Post, Manager, Energy Education Project  
Re: LWV Energy Education Project Workshops  
Date: January 19, 1978

### JANUARY 28, ANOKA

### FEBRUARY 4, OWATONNA

We look forward to a day of information and sharing!

The Anoka Holiday Inn is located at the south side of Highway 10, approximately 1 mile north of Anoka.

The Owatonna Holiday Inn is located at the Highway 14 East Turnoff of Interstate 35.

Those who are driving must record mileage on their odometer from start to return trip. Vouchers will be available at the workshop.

Please call me (612-636-4409) with any changes. If you must cancel, we must know by January 25 for Anoka or February 1 for Owatonna. We have to pay for lunch if you come or not.

Anoka  
January 28, 1978

### AGENDA

Owatonna  
February 4, 1978

9:30 a.m.	Registration	
10:00 a.m.	"Minnesota Energy Supplies, Prices and Outlook"	Ronald Visness, Assistant Director for MEA Data and Analysis
11:00 a.m.	"Minnesota Transportation, Energy and Land Use"	Mark Monson, MEA Trans- portation Specialist
12:00 Noon	"Citizen Participation in Power Line/Power Plant Siting in Minnesota"	Dr. William Green, Public Advisor, State Planning Agency
1:00 p.m.	"Citizen Call to Action"	Dixie Diehl, Director, Local Services, MEA
2:00 p.m.	"Energy Education Projects We've Tried"	Leaguers
3:00 p.m.	The Films: How to Get Them, Who Might See Them, and a Showing	"Bottom of the Oil Barrel" "The Sunbeam Solution"





## LEAGUE OF WOMEN VOTERS OF MINNESOTA

555 WABASHA • ST. PAUL, MINNESOTA 55102 • TELEPHONE (612) 224-5445

February 14, 1978

Mary Ekren  
251 Wegener Drive  
Breckenridge, MN 56520

Dear Mary:

I want to thank you for sharing energy education project ideas on the panel at the Anoka workshop. Your presentation was well prepared and clearly stated. Evaluations for the panel were most enthusiastic.

It was important to the workshop participants to know what others have tried so that they might balance ideas in the light of their own community's needs.

Thanks so much for adding to the quality of the day.

Sincerely,

Margaret Post, Manager  
Energy Education Project

P:M

## REST OF ENERGY RESOURCE TRAINING RELEASE

Purpose of the program is (was) to train interested people from throughout Minnesota so that they can return to their communities as energy resource persons.

Participants will receive (received) backgrounding in the energy supplies, prices and outlook for the state. Presentations will also be (also were) heard on Minnesota transportation, energy and land use, and on public participation in power plant and power line decision-making.

Information about citizen outreach energy programs available in Minnesota will be (was) provided by Dixie Diehl, Director of Local Services for the Minnesota Energy Agency. Participants also will see (saw) films depicting the depleting oil reserves and the uses of solar energy. The films will be available for those in the program to use in their own communities.

Some of the functions of the energy resource persons in their home areas will include education of the public to energy problems; school outreach programs; sponsorship of energy fairs; the mobilization of local government to establish community energy policies.

Expenses for participants in the Energy Resource Training Program are being (were) underwritten by a grant from the U.S. Department of Energy, through the League of Women Voters Education Fund.

To: Workshop Participants  
From: Margaret Post, Manager, Energy Education Project  
Re: LWV Energy Education Project Workshops  
Date: January 19, 1978

JANUARY 28, ANOKA

FEBRUARY 4, OWATONNA

We look forward to a day of information and sharing!

The Anoka Holiday Inn is located at the south side of Highway 10, approximately 1 mile north of Anoka.

The Owatonna Holiday Inn is located at the Highway 14 East Turnoff of Interstate 35.

Those who are driving must record mileage on their odometer from start to return trip. Vouchers will be available at the workshop.

Please call me (612-636-4409) with any changes. If you must cancel, we must know by January 25 for Anoka or February 1 for Owatonna. We have to pay for lunch if you come or not.

Anoka  
January 28, 1978

AGENDA

Owatonna  
February 4, 1978

9:30 a.m.	Registration	
10:00 a.m.	"Minnesota Energy Supplies, Prices and Outlook"	Ronald Visness, Assistant Director for MEA Data and Analysis
11:00 a.m.	"Minnesota Transportation, Energy and Land Use"	Mark Monson, MEA Transportation Specialist
12:00 Noon	"Citizen Participation in Power Line/Power Plant Siting in Minnesota"	Dr. William Green, Public Advisor, State Planning Agency
1:00 p.m.	"Citizen Call to Action"	Dixie Diehl, Director, Local Services, MEA
2:00 p.m.	"Energy Education Projects We've Tried"	Leaguers
3:00 p.m.	The Films: How to Get Them, Who Might See Them, and a Showing	"Bottom of the Oil Barrel" "The Sunbeam Solution"



Ronald D. Visness  
Assistant Director  
Minnesota Energy Agency  
150 East Kellogg Boulevard  
740 American Center Building  
St. Paul, Minnesota 55101

VITA:

Mr. Visness is currently Assistant Director in charge of the Agency's Data and Analysis Division. The Division is responsible for insuring that the Agency's policy objectives are met in the areas of fuel supply, energy demand forecasting, data collection, statistical analysis, alternative energy development and energy facility evaluation.

Previously Visness had headed the Agency's Data Systems activity. In this capacity, he supervised the development of the Agency's major computer databases, including the Regional Energy Information System (REIS), the Minnesota/FEA petroleum reporting system, the Minnesota Geographic Location database (MNLOC), and the Energy Agency project control system.

Mr. Visness' past experience includes a year and one-half in Norway to help the Norwegian Regional College System develop its business data processing and systems analysis curriculum, two years as an assistant professor at the University of Minnesota to develop the evening program in Management Information Systems, and four years as an independent EDP and systems consultant.

Mr. Visness has a Bachelors Degree in Chemical Engineering and a Master of Science Degree in Business with a major in Operations Research. He has also completed the course work for a PhD in Management.



## MINNESOTA ENERGY AGENCY

740 American Center Building  
160 East Kellogg Boulevard  
St. Paul, Minnesota 55101

612-296-5120

### BIOGRAPHICAL INFORMATION

#### Dixie Lee Diehl

Dixie L. Diehl is the Director of Local Services, which includes fuel allocation, emergency planning and response, citizen conservation outreach programs and liaison with local units of government for the Minnesota Energy Agency.

Prior to coming to State Government in October, 1973 to work on energy problems, Ms. Diehl worked in the agricultural field for eight years.

Raised on a farm near Des Moines, Iowa, Ms Diehl attended Central College in Pella, Iowa and the University of Iowa majoring in general science and physical education.



## LEAGUE OF WOMEN VOTERS OF MINNESOTA

555 WABASHA • ST. PAUL, MINNESOTA 55102 • TELEPHONE (612) 224-5445

February 14, 1978

Margit Johnson  
613 Union  
Northfield, MN 55057

Dear Margit:

I want to thank you for sharing energy education project ideas on the panel at the Anoka workshop. Your presentation was well prepared and clearly stated. Evaluations for the panel were most enthusiastic.

It was important to the workshop participants to know what others have tried so that they might balance ideas in the light of their own community's needs.

Thanks so much for adding to the quality of the day.

Sincerely,

Margaret Post, Manager  
Energy Education Project

P:M



## LEAGUE OF WOMEN VOTERS OF MINNESOTA

555 WABASHA • ST. PAUL, MINNESOTA 55102 • TELEPHONE (612) 224-5445

February 14, 1978

Pat Ryan  
9016 Kimbro  
Cottage Grove, MN 55016

Dear Pat:

I want to thank you for sharing energy education project ideas on the panel at the Anoka workshop. Your presentation was well prepared and clearly stated. Evaluations for the panel were most enthusiastic.

It was important to the workshop participants to know what others have tried so that they might balance ideas in the light of their own community's needs.

Thanks so much for adding to the quality of the day.

Sincerely,

Margaret Post, Manager  
Energy Education Project

P:M



## LEAGUE OF WOMEN VOTERS OF MINNESOTA

555 WABASHA • ST. PAUL, MINNESOTA 55102 • TELEPHONE (612) 224-5445

February 14, 1978

Dixie Diehl, Director  
Local Services Division  
Minnesota Energy Agency  
720 American Center Building  
150 East Kellogg Boulevard  
St. Paul, MN 55101

Dear Dixie:

I want to thank you for all your efforts that helped to make the energy resource training workshops successful.

The workshop evaluations were extremely positive, and participants were grateful for your enthusiasm and for your concrete suggestions for energy-related activities.

I know that many hours went into the organization and coordination of the MEA's contributions to the workshop. Thank you for your cooperation. We look forward to projects in educating the public to the reality of the energy problem and offering ways they might begin to help solve it.

Sincerely,

Margaret Post, Manager  
Energy Education Project

P:M





## LEAGUE OF WOMEN VOTERS OF MINNESOTA

555 WABASHA • ST. PAUL, MINNESOTA 55102 • TELEPHONE (612) 224-5445

February 13, 1978

Dr. William Greene, Public Advisor  
State Planning Agency  
Capitol Square Building  
St. Paul, MN 55101

Dear Bill:

I want to thank you for your time and your presence at the energy education workshops in Anoka and Owatonna.

The evaluations were excellent, and I am receiving many positive comments about the attitudes and concerns you communicated to the people who were present.

Enclosed is a copy of the names and addresses of those who attended both workshops. I am notifying them next week that you may wish to contact individuals at some time as part of your energy-related communication/education efforts in the future.

Thank you!

Sincerely,

Margaret Post, Manager  
Energy Education Project

P:M  
Enclosure



## LEAGUE OF WOMEN VOTERS OF MINNESOTA

555 WABASHA • ST. PAUL, MINNESOTA 55102 • TELEPHONE (612) 224-5445

February 14, 1978

Mr. Ronald Visness, Assistant Director  
for Data and Analysis  
Minnesota Energy Agency  
720 American Center Building  
150 East Kellogg Boulevard  
St. Paul, MN 55101

Dear Ron:

I want to thank you for your efforts that helped to make the Anoka Energy Education Workshop on January 28th successful.

The subject matter you discussed was essential for the persons wishing to be energy resource persons in their communities, and you presented it in a lively way.

Your expertise added credibility to the reality of energy problems.

Sincerely,

Margaret Post, Manager  
Energy Education Project

P:M



## LEAGUE OF WOMEN VOTERS OF MINNESOTA

555 WABASHA • ST. PAUL, MINNESOTA 55102 • TELEPHONE (612) 224-5445

February 15, 1978

Janet Peterson  
Minnesota Energy Agency  
720 American Center Building  
150 East Kellogg Boulevard  
St. Paul, MN 55101

Dear Janet:

I want to thank you for your presentation on the energy supply outlook at the Owatonna Energy Education Workshop.

Evaluations were excellent, and workshop participants appreciated the careful organization of your presentation and your ability to "paint a picture" of the energy issues.

Thank you for your contribution to the success of the Owatonna workshop.

Sincerely,

Margaret Post, Manager  
Energy Education Project

P:M





## LEAGUE OF WOMEN VOTERS OF MINNESOTA

555 WABASHA • ST. PAUL, MINNESOTA 55102 • TELEPHONE (612) 224-5445

January 10, 1978

Dixie Diehl, Director  
Local Services Division  
Minnesota Energy Agency  
720 American Center Building  
150 East Kellogg Boulevard  
St. Paul, MN 55101

Dear Dixie:

We are pleased that you have agreed to speak on "Citizens Call to Action" at 11:00 a.m. on January 28 at the Anoka Holiday Inn and at 11:00 a.m. on February 4 at the Owatonna Holiday Inn.

The enclosed discussion guide is to aid you in the direction of your presentation. League participants will have a copy of the guide to aid them in their comprehension and questioning. One hour is allowed for your talk and a question-and-answer session.

Also enclosed is a copy of "Energy Dilemmas" and "Energy Options," publications of the League of Women Voters of the United States. Most participants will have recently taken part in an in-depth energy study using these booklets as background information. I hope that you will find them to be valuable.

Dixie, thank you for your many efforts in planning for these workshops. We expect a "full house" in Anoka (75 participants) and about 50 in Owatonna.

Please contact me at the earliest possible date if there are any problems with your involvement at the workshops. My phone is 636-4409.

Thank you for your cooperation.

Sincerely,

Margaret Post, Manager  
Energy Education Project

P.S. The Anoka Holiday Inn (January 28) is located on the south end of Highway 10, one-half mile north of Anoka. The Owatonna Holiday Inn (February 4) is located at the Highway 14 east turnoff of Interstate 35. Registration will begin at 9:30 a.m.



## LEAGUE OF WOMEN VOTERS OF MINNESOTA

555 WABASHA • ST. PAUL, MINNESOTA 55102 • TELEPHONE (612) 224-5445

January 10, 1978

Mr. Ronald Visness, Assistant Director for Data and Analysis  
Minnesota Energy Agency  
720 American Center Building  
150 East Kellogg Boulevard  
St. Paul, MN 55101

Dear Mr. Visness:

We are pleased that you have agreed to speak on "Minnesota Energy Supplies, Prices and Outlook," at 10:00 a.m. on January 28 at the Anoka Holiday Inn and at 10:00 a.m. on February 4 at the Owatonna Holiday Inn.

The enclosed discussion guide is to aid you in the direction of your presentation. League participants will have a copy of the guide to aid them in their comprehension and questioning. One hour is allowed for your talk and a question-and-answer session.

Also enclosed is a copy of "Energy Dilemmas" and "Energy Options," publications of the League of Women Voters of the United States. Most participants will have recently taken part in an in-depth energy study using these booklets as background information. I hope that you will find them to be valuable.

I greatly appreciate your efforts toward making these training workshops a success. We hope the interchange with interested and informed citizens from across the state will be beneficial to you and the Minnesota Energy Agency.

Please contact me at the earliest possible date if there are any problems with your involvement at the workshops. My phone is 636-4409.

Thank you for your cooperation.

Sincerely,

Margaret Post, Manager  
Energy Education Project

P.S. The Anoka Holiday Inn (January 28) is located at the south end of Highway 10, one-half mile north of Anoka. The Owatonna Holiday Inn (February 4) is located at the Highway 14 east turnoff of Interstate 35. Registration will begin at 9:30 a.m.



## LEAGUE OF WOMEN VOTERS OF MINNESOTA

555 WABASHA • ST. PAUL, MINNESOTA 55102 • TELEPHONE (612) 224-5445

January 10, 1978

Mr. Mark Monson, Transportation Specialist  
Minnesota Energy Agency  
720 American Center Building  
150 East Kellogg Boulevard  
St. Paul, MN 55101

Dear Mr. Monson:

We are pleased that you have agreed to speak on "Minnesota Transportation, Energy and Land Use," at 11:00 a.m. on January 28 at the Anoka Holiday Inn and at 11:00 a.m. on February 4 at the Owatonna Holiday Inn.

The enclosed discussion guide is to aid you in the direction of your presentation. League participants will have a copy of the guide to aid them in their comprehension and questioning. One hour is allowed for your talk and a question-and-answer session.

Also enclosed is a copy of "Energy Dilemmas" and "Energy Options," publications of the League of Women Voters of the United States. Most participants will have recently taken part in an in-depth energy study using these booklets as background information. I hope that you will find them to be valuable.

I greatly appreciate your efforts toward making these training workshops a success. We hope the interchange with interested and informed citizens from across the state will be beneficial to you and the Minnesota Energy Agency.

Please contact me at the earliest possible date if there are any problems with your involvement at the workshops. My phone is 636-4409.

Thank you for your cooperation.

Sincerely,

Margaret Post, Manager  
Energy Education Project

P.S. The Anoka Holiday Inn (January 28) is located on the south end of Highway 10, one-half mile north of Anoka. The Owatonna Holiday Inn (February 4) is located at the Highway 14 east turnoff of Interstate 35. Registration will begin at 9:30 a.m.



## LEAGUE OF WOMEN VOTERS OF MINNESOTA

555 WABASHA • ST. PAUL, MINNESOTA 55102 • TELEPHONE (612) 224-5445

To: Local League Presidents/Energy Resource People  
From: Marge Post, Manager, Energy Education Project  
Re: Energy Training Workshops  
Date: November 29, 1977

The League of Women Voters of Minnesota has been notified that its grant proposal for an energy education project funded by the Department of Energy through the LWVUS Education Fund has been approved. The Minnesota project has two aspects: the training of Leaguers who wish to be energy resource persons for their communities and the purchase and state-wide circulation of two films for general energy education, "The Bottom of the Oil Barrel" and "The Sunbeam Solution."

Plans are underway for one-day workshops for those who have expressed an interest in becoming energy resource persons. Workshops will take place at the Anoka Holiday Inn on Saturday, January 28, 1978, and at the Owatonna Holiday Inn on Saturday, February 4th. The purpose of the workshops will be to help us better understand the energy problem at the state level (Minnesota supply situation, Minnesota transportation problems and plans), to familiarize ourselves with Minnesota Energy Agency outreach programs, to relate our community energy information needs to existing state resources, and to exchange ideas on methods for serving these needs. The films, which give an excellent balanced view of the national and international energy picture will be available for viewing, and the means for getting them to your area will be explained.

(Over)



The DOE grant budget includes monies for travel and lunch for up to 2 Leaguers per League under 100 members or 2 Leaguers per 100 members for large Leagues.

This mailing is being sent to you because you expressed an interest in energy resource training or because you are a League president. If you are a League president and someone in your League is also receiving this mailing, they are listed below.

We would greatly appreciate your help in planning the workshops. Kindly fill out the form below and return to the state office by December 15th.

Please return the following to the state office by December 15.

-----  
Who are you? \_\_\_\_\_ (League)

Do you plan to attend the energy workshop?

Anoka (January 28) \_\_\_\_\_ Owatonna (February 4) \_\_\_\_\_

Do you know Leaguers who have been particularly effective with community energy education activities? (Name and address, please)

Does your League have plans to promote an energy education activity? (Explain)

What is the largest energy education need in your community?

Have you seen the films, "The Sunbeam Solution" and "The Bottom of the Oil Barrel"?

February 14, 1978

Dear Sue;

The secretary is out for the day so you are going to have to endure my typing.

I want to thank you for sharing the Northfield energy projects with participants at the Owatonna workshop. Evaluations on the panel were excellent, and participants expressed enthusiasm for your frankness about what you had tried.

I thought I was nearly done, and it is just begun! Why don't you come to St. Paul and join me for lunch soon? I'll be in Illinois from Feb. 22-27, so it might be after then. I'm getting worried about those mattress pads and sheets for your children.

If I ~~can~~ get an appointment with Dixie I'll sign a contract to compile the energy resource directory. Have to do the work now anyway because the person writing it has to leave the country in March.

I have written to 52 utilities, organizations, agencies, etc. for information regarding energy-related services, projects and programs. Please send any names ~~and~~ addresses you might recommend that I contact pronto. Why did I ever say I would do this?

Also would appreciate suggestions about how to handle follow up information for "energy resource persons". Am planning a letter for the near future.

Hope to see you in Feb. or March.

Sincerely,

Marge

Enclosed are 6 copies of report forms for our files. Sorry for more to do!

ATTENTION POTENTIAL ENERGY EDUCATION WORKSHOP PARTICIPANTS!

Put down the cookie dough and fill out your workshop registration forms (or make one up and send it to LWVMN state office). After January 10th registration will be open to non-Leaguers.

Please hurry. There is limited seating available. (Remember that transportation and lunch are free for 1 - 2 Leaguers per League.)

TENTATIVE AGENDA

Anoka, January 28, 1978

Owatonna, February 4, 1978

10:00 a.m. - 4:00 p.m.

10:00 - 11:00	Minnesota Energy Supply Situation	Ronald Visness, MN Energy Agency
11:00 - 12:00	Minnesota Transportation Problems and Plans	Mark Monson, MN Energy Agency
12:00 - 1:00 (Luncheon)	What to Do When a Power Plant/Trans- mission Line is Coming	William Greene, Public Advisor, State Planning
1:00 - 2:00	MEA Outreach Programs: Helping Your Community Confront Energy Problems	Dixie Diehl, MN Energy Association
2:00 - 3:00	Energy Education Ideas: A Sharing Time	Leaguers
3:00 - 4:00	The Films: How to Get Them, Where to Show them (viewing available)	

- - - - - tear-off for NEW REGISTRANTS ONLY - - - - -

The League of Women Voters of \_\_\_\_\_ will send

\_\_\_\_\_  
(names of participants)

to the energy workshop to be held in Anoka, January 28th,

or Owatonna, February 4th.



## LEAGUE OF WOMEN VOTERS OF MINNESOTA

555 WABASHA • ST. PAUL, MINNESOTA 55102 • TELEPHONE (612) 224-5445

January 10, 1978

Mr. Ronald Visness, Assistant Director for Data and Analysis  
Minnesota Energy Agency  
720 American Center Building  
150 East Kellogg Boulevard  
St. Paul, MN 55101

Dear Mr. Visness:

We are pleased that you have agreed to speak on "Minnesota Energy Supplies, Prices and Outlook," at 10:00 a.m. on January 28 at the Anoka Holiday Inn and at 10:00 a.m. on February 4 at the Owatonna Holiday Inn.

The enclosed discussion guide is to aid you in the direction of your presentation. League participants will have a copy of the guide to aid them in their comprehension and questioning. One hour is allowed for your talk and a question-and-answer session.

Also enclosed is a copy of "Energy Dilemmas" and "Energy Options," publications of the League of Women Voters of the United States. Most participants will have recently taken part in an in-depth energy study using these booklets as background information. I hope that you will find them to be valuable.

I greatly appreciate your efforts toward making these training workshops a success. We hope the interchange with interested and informed citizens from across the state will be beneficial to you and the Minnesota Energy Agency.

Please contact me at the earliest possible date if there are any problems with your involvement at the workshops. My phone is 636-4409.

Thank you for your cooperation.

Sincerely,

Margaret Post, Manager  
Energy Education Project

P.S. The Anoka Holiday Inn (January 28) is located at the south end of Highway 10, one-half mile north of Anoka. The Owatonna Holiday Inn (February 4) is located at the Highway 14 east turnoff of Interstate 35. Registration will begin at 9:30 a.m.





## LEAGUE OF WOMEN VOTERS OF MINNESOTA

555 WABASHA • ST. PAUL, MINNESOTA 55102 • TELEPHONE (612) 224-5445

December 14, 1977

Dr. William Greene, Public Advisor  
State Planning Agency  
Capitol Square Building  
St. Paul, MN 55101

Dear Mr. Greene:

This is to verify our phone conversation of December 9th. The League of Women Voters of Minnesota Energy Education Project includes workshops on January 28th at the Anoka Holiday Inn and February 4th at the Owatonna Holiday Inn. I would be pleased if you could speak during the lunch hour at each of these workshops.

The purpose of the workshops is to give participants the opportunity to be better informed on Minnesota energy-related matters, to give them a base of sources they might use to educate their communities about energy issues, and to exchange ideas for energy education projects.

Would you speak about what citizens should do if a power line or plant is coming to their area? Participants may not know what the process is - including certificate of need. And they may not know about your position - what you can and cannot do for the public.

I am enclosing a form for a source list. I would greatly appreciate a reply. Would you also include a summary of your educational and work experiences?

Thank you for your help.

Sincerely,

Margaret Post, Manager  
Energy Education Project

P:M  
Enclosure



## LEAGUE OF WOMEN VOTERS OF MINNESOTA

555 WABASHA • ST. PAUL, MINNESOTA 55102 • TELEPHONE (612) 224-5445

February 14, 1978

Jerry Jenkins  
District 12  
Community Council  
2380 Hampden  
St. Paul, MN 55114

Dear Jerry:

I want to thank you for sharing energy education project ideas on the panel at the Anoka workshop. Your presentation was well prepared and clearly stated. Evaluations for the panel were most enthusiastic.

It was important to the workshop participants to know what others have tried so that they might balance ideas in the light of their own community's needs.

Thanks so much for adding to the quality of the day.

Sincerely,

Margaret Post, Manager  
Energy Education Project

P:M



## LEAGUE OF WOMEN VOTERS OF MINNESOTA

555 WABASHA • ST. PAUL, MINNESOTA 55102 • TELEPHONE (612) 224-5445

February 14, 1978

Larry Kirchner  
1300 Melrose Avenue  
St. Louis Park, MN 55426

Dear Larry:

I want to thank you for sharing energy education project ideas on the panel at the Owatonna workshop. Evaluations for the panel were most enthusiastic.

It was important to the workshop participants to know what others have tried so that they might balance ideas in the light of their own community's needs.

Thanks so much for adding to the quality of the day.

Sincerely,

Margaret Post, Manager  
Energy Education Project

P:M



## LEAGUE OF WOMEN VOTERS OF MINNESOTA

555 WABASHA • ST. PAUL, MINNESOTA 55102 • TELEPHONE (612) 224-5445

February 14, 1978

Barbara Maher  
217 Viola  
Mankato, MN 56001

Dear Barb:

I want to thank you for sharing energy education project ideas on the panel at the Owatonna workshop. Your presentation was well prepared and clearly stated. Evaluations for the panel were most enthusiastic.

It was important to the workshop participants to know what others have tried so that they might balance ideas in the light of their own community's needs.

Thanks so much for adding to the quality of the day.

Sincerely,

Margaret Post, Manager  
Energy Education Project

P:M



## LEAGUE OF WOMEN VOTERS OF MINNESOTA

555 WABASHA • ST. PAUL, MINNESOTA 55102 • TELEPHONE (612) 224-5445

February 14, 1978

Mr. Mark Monson, Transportation Specialist  
Minnesota Energy Agency  
720 American Center Building  
150 East Kellogg Boulevard  
St. Paul, MN 55101

Dear Mark:

I want to thank you for your time and effort that contributed to the high quality of the two energy education workshops in Anoka and Owatonna.

Your presentations gave participants an introduction to energy-related transportation problems in a cohesive and comprehensive way.

We hope the training workshops will have laid the groundwork for more meaningful energy-education projects in Minnesota.

Sincerely,

Margaret Post, Manager  
Energy Education Project

P:M





## LEAGUE OF WOMEN VOTERS OF MINNESOTA

555 WABASHA • ST. PAUL, MINNESOTA 55102 • TELEPHONE (612) 224-5445

February 14, 1978

Helen Durand  
219 South Lincoln  
Owatonna, MN 55060

Dear Helen:

I want to thank you for your help and for the efforts of the Owatonna League members who made our Energy Education Workshop in Owatonna such a success. The evaluations were excellent, and I feel that your League made a large contribution to the quality of the day.

I particularly want to thank you for the goodies that gave a personal touch and for your success in finding a projector and someone to run it.

Thanks for a great day.

Sincerely,

Margaret Post, Manager  
Energy Education Project

P:M



## LEAGUE OF WOMEN VOTERS OF MINNESOTA

555 WABASHA • ST. PAUL, MINNESOTA 55102 • TELEPHONE (612) 224-5445

February 14, 1978

Geri Nelson  
1013 Vera Street  
Champlin, MN 55316

Dear Geri:

I want to thank you for your help and for the efforts of the Anoka-Coon Rapids Area League members who made our Energy Education Workshop in Anoka such a success. The evaluations were excellent, and I feel that your League made a large contribution to the quality of that day.

I particularly want to thank you for the hospitality extended to out-state Leaguers, and for Betty's success in getting the projector and running it.

Thanks for a great day.

Sincerely,

Margaret Post, Manager  
Energy Education Project

P:M



## LEAGUE OF WOMEN VOTERS OF MINNESOTA

555 WABASHA • ST. PAUL, MINNESOTA 55102 • TELEPHONE (612) 224-5445

January 10, 1978

Dixie Diehl, Director  
Local Services Division  
Minnesota Energy Agency  
720 American Center Building  
150 East Kellogg Boulevard  
St. Paul, MN 55101

Dear Dixie:

We are pleased that you have agreed to speak on "Citizens Call to Action" at 11:00 a.m. on January 28 at the Anoka Holiday Inn and at 11:00 a.m. on February 4 at the Owatonna Holiday Inn.

The enclosed discussion guide is to aid you in the direction of your presentation. League participants will have a copy of the guide to aid them in their comprehension and questioning. One hour is allowed for your talk and a question-and-answer session.

Also enclosed is a copy of "Energy Dilemmas" and "Energy Options," publications of the League of Women Voters of the United States. Most participants will have recently taken part in an in-depth energy study using these booklets as background information. I hope that you will find them to be valuable.

Dixie, thank you for your many efforts in planning for these workshops. We expect a "full house" in Anoka (75 participants) and about 50 in Owatonna.

Please contact me at the earliest possible date if there are any problems with your involvement at the workshops. My phone is 636-4409.

Thank you for your cooperation.

Sincerely,

Margaret Post, Manager  
Energy Education Project

P.S. The Anoka Holiday Inn (January 28) is located on the south end of Highway 10, one-half mile north of Anoka. The Owatonna Holiday Inn (February 4) is located at the Highway 14 east turnoff of Interstate 35. Registration will begin at 9:30 a.m.





## LEAGUE OF WOMEN VOTERS OF MINNESOTA

555 WABASHA • ST. PAUL, MINNESOTA 55102 • TELEPHONE (612) 224-5445

January 10, 1978

Mr. Mark Monson, Transportation Specialist  
Minnesota Energy Agency  
720 American Center Building  
150 East Kellogg Boulevard  
St. Paul, MN 55101

Dear Mr. Monson:

We are pleased that you have agreed to speak on "Minnesota Transportation, Energy and Land Use," at 11:00 a.m. on January 28 at the Anoka Holiday Inn and at 11:00 a.m. on February 4 at the Owatonna Holiday Inn.

The enclosed discussion guide is to aid you in the direction of your presentation. League participants will have a copy of the guide to aid them in their comprehension and questioning. One hour is allowed for your talk and a question-and-answer session.

Also enclosed is a copy of "Energy Dilemmas" and "Energy Options," publications of the League of Women Voters of the United States. Most participants will have recently taken part in an in-depth energy study using these booklets as background information. I hope that you will find them to be valuable.

I greatly appreciate your efforts toward making these training workshops a success. We hope the interchange with interested and informed citizens from across the state will be beneficial to you and the Minnesota Energy Agency.

Please contact me at the earliest possible date if there are any problems with your involvement at the workshops. My phone is 636-4409.

Thank you for your cooperation.

Sincerely,

Margaret Post, Manager  
Energy Education Project

P.S. The Anoka Holiday Inn (January 28) is located on the south end of Highway 10, one-half mile north of Anoka. The Owatonna Holiday Inn (February 4) is located at the Highway 14 east turnoff of Interstate 35. Registration will begin at 9:30 a.m.



LEAGUE OF WOMEN VOTERS  
OF MINNESOTA  
PHONE (612) 224-5445  
555 WABASHA - ST PAUL, MINNESOTA 55102

# news release

For more information contact:

Judy Medelman (612) 224-5445

(to participants' daily or weeklies -  
16 papers in all)

Three Moorhead residents were among participants at a regional Energy Resource Training Program held in Anoka recently. The program was sponsored by the League of Women Voters of Minnesota in cooperation with the Minnesota Energy Agency.

Attending were Jean Flanagan, Jan Valdez and David Hilde.

Purpose of the program was to train interested people from throughout Minnesota so that they could return to their communities as energy resource persons.

Participants received backgrounding in the energy supplies, prices and outlook for the state. Presentations also were heard on Minnesota transportation, energy and land use, and on public participation in power plant and power line decision-making.

Information about citizen outreach energy programs available in Minnesota was provided by Dixie Diehl, Director of Local Services for the Minnesota Energy Agency. Participants also saw films on the depleting oil reserves and the uses of solar energy. The films are available for those in the program to use in the own communities.

Some of the functions of the energy resource persons in their home areas will include education of the public to energy problems; school outreach programs; sponsorship of energy fairs; the mobilization of local government to establish community energy policies.

Expenses for participants in the Energy Resource Training Program were underwritten by a grant from the U.S. Department of Energy, through the League of Women Voters Education Fund.



**LEAGUE OF WOMEN VOTERS  
OF MINNESOTA**

**PHONE (612) 224-5445**

**555 WABASHA • ST PAUL, MINNESOTA 55102**

# news release

For more information contact:

Judy Medelman (612) 224-5445

FOR IMMEDIATE RELEASE

The Owatonna area is one of two sites in the state selected to host a regional Energy Resource Training Program. The program is sponsored by the League of Women Voters of Minnesota in cooperation with the Minnesota Energy Agency. Local coordinators for the program are Kathy Staska and Carmen Bey, League of Women Voters of Owatonna.

Purpose of the program is to train interested people from throughout the state so that they can return to their communities as energy resource persons.

Participants will receive backgrounding in the energy supplies, prices and outlook for the state. Presentations will also be heard on Minnesota transportation, energy and land use, and on public participation in power plant and power line decision-making.

Information about citizen outreach energy programs available in Minnesota will be provided by Dixie Diehl, Director of Local Services for the Minnesota Energy Agency. Participants will see films depicting the depleting oil reserves and the uses of solar energy. The films will be available for those in the program to use in their own communities.

Some of the functions of the energy resource persons in their home areas will include education of the public to energy problems; school outreach programs; sponsorship of energy fairs; the mobilization of local government to establish community energy policies.

Expenses for participants in the Energy Resource Training Program are being underwritten by a grant from the U.S. Department of Energy, through the League of Women Voters Education Fund.

The all-day workshop will be held in Owatonna on Saturday, February 4.



## MINNESOTA ENERGY AGENCY

720 AMERICAN CENTER BUILDING  
150 EAST KELLOGG BOULEVARD  
ST. PAUL, MINNESOTA 55101

612-296-5120



### BIOGRAPHICAL INFORMATION

Mark W. Monson

Mark W. Monson is the "Transportation Person" at the Minnesota Energy Agency (MEA). He is responsible for the Agency's total energy conservation program in transportation, including both planning and operational activities. Mark provides coordination on transportation concerns with the Federal government, other state agencies, transportation associations, and local transport operators. Through the Agency's Outreach Program, local units of government and the general public can receive transportation and energy information.

The Minnesota Energy Agency's present transportation activities include work on: the statewide transportation program, a driver's education program, promotion of a voluntary truck and bus fuel economy program and investigation of fuel saving techniques and devices.

Mr. Monson is from southern Minnesota where he graduated from Gustavus Adolphus College with a degree in Geography. He is also pursuing a Masters Degree in Urban

AN EQUAL OPPORTUNITY EMPLOYER





and Regional studies. Before joining the Minnesota Energy Agency he worked for two years with a regional planning agency in charge of transportation and water quality activities.



# ENREGY RESOURCE TRAINING LOCATIONS

The \_\_\_\_\_ area is one of two sites in the state selected to host a regional Energy Resource Training Program. The program is sponsored by the League of Women Voters of Minnesota in cooperation with the Minnesota Energy Agency. Local coordinators for the program are \_\_\_\_\_ and \_\_\_\_\_, League of Women Voters of \_\_\_\_\_.

- to rest of the release copy -

Dear

The League of Women Voters of Minnesota has received a Department of Energy grant through the League of Women Voters of the U.S. Education Fund to conduct an energy education project. In cooperation with the Minnesota Energy Agency League representatives will be trained as energy resource persons for their communities. Two films for general energy education will be purchased and circulated throughout the state. They are "Bottom of the Oil Barrel" and "The Sunbeam Solution".

In order to avoid duplication of projects it is important to know what existing or planned energy education projects may be available to Minnesota communities. At the same time there is a need to know where to direct requests for certain types of energy-related ~~information~~ services and information.

For those reasons I am writing to request that you ~~take time to~~ describe ongoing or planned energy education projects, and ~~you inform~~ that you outline the kinds of information/service requests you are equipped to answer. The information will be made available to workshop members in January compiled and

Copies of the resource list will be placed in local public libraries.

If you have brochures that describe your energy projects or services we will be happy to include them in resource packets for workshop members. At this time we expect 50-75 participants.

Kindly return the enclosed form to me before January 10, 1978. If you have questions, please contact me at 612-836-4409.

Thank you for your assistance.

Name \_\_\_\_\_

Address \_\_\_\_\_ Phone \_\_\_\_\_

Organization representing \_\_\_\_\_

What energy education projects do you have at this time?

What energy-related services do you provide?

What plans do you have for energy-related education projects or services in the future?

Who should contact your organization for energy-related information or services? (i.e. Customers, Community organizations, <sup>residents</sup> within a certain geographical area, etc.)

Whom should they contact?

Name \_\_\_\_\_

Address \_\_\_\_\_ Phone \_\_\_\_\_

Do you know of other organizations that should be providing energy-related projects / info / services? Please name \_\_\_\_\_

~~If space is not adequate, please~~

November 7, 1977

Environmental Conservation Library  
(ECOL) Minneapolis Public Library

372-6637 Julie Koplan

The library works through established library channels and mails materials directly to individuals. They publish a book catalog that is deposited in state-wide libraries. She suggested strongly that we have energy resource people make specific requests for materials at their local public libraries.

Todo: send copies of bibliographies to her.

*Brail*  
November 7, 1977

Environmental Education Council  
Karen Loechler 296-2368

This council operates out of 13 regional environmental education council. They provide help to schools through teacher training, energy curriculum workshops, Jr. High energy curriculum pilot test project, energy fairs. They do nothing in the area of consumer help regarding energy matters. The council has 169 volunteers across the state and Karen felt strongly that some of them would profit from and extend our efforts in training as resource people in their communities. Since the council is funded by the state there would be enough money for travel and meals etc. for their own volunteers.



Directory





## LEAGUE OF WOMEN VOTERS OF MINNESOTA

555 WABASHA • ST. PAUL, MINNESOTA 55102 • TELEPHONE (612) 224-5445

August 1, 1978

Ms. Dixie Diehl, Director  
Local Services Division  
Minnesota Energy Agency  
720 American Center Building  
150 East Kellogg Boulevard  
St. Paul, MN 55101

Dear Dixie:

The League of Women Voters of Minnesota submitted the final draft of the energy resources directory to you on July 27, 1978. Please remit the second half of the contract fee to the League office at the earliest possible date.

We are happy to have worked with you on another energy education project.

Sincerely,

Kathie Gilder  
Editor

Margaret Post  
Manager

M

✓ Mark St. Lawrence 218-254-3353  
• Elm Reulexation  
City Hall, Chesholm 55719

Hermit Johnson 218-  
Arrowhead Econ Opp 749-  
3rd Ave & 6th St 2912  
Virginia 55792

Main Counties Research

Honeywell

Rural Develop Council  
St. Governor's Office

Region 9 -  
Minn.

Martin City  
Watsonwan City

Minn. Valley Action Council  
absorbed out of South Center  
July 10 county commissioners  
Cottonwood } decision will go to  
Jackson } another CAP in  
2 months  
by one in Region 8

These two are in transition &  
will be served by either  
(Southwestern Off Council  
Western Comm Nat Council)

✓ Minnesota Heartland  
PO Box 443  
411 Laurel St Brainerd 56401

⑥ Commercial Division - Honeywell  
research and develop

✓ ⑦ League of Minn. Cities

222-2861  
Gary Brufman  
Urban Energy Specialist Program  
what is it? now funded

\* ⑧ Minn. Counties Research Foundation  
get update on their program

✓ ⑨ ~~Iron Range Citizens Concerned for~~  
Energy successful wood project  
in state  
outgrowth of Hitting Chedoke, Virgin  
Society Energy project  
call Marsh at MERS on Monday

⑩ Rural Development Council  
call Il. Governor's Project  
some energy related programs

⑪ LNV

✓ ⑫ Public Service Options - Mpls.  
transp. conservation  
513 Nicolett Mall  
Mpls.



address: South Central ~~Reg. District~~ CAC for  
absorbed by regions 8 & 9 CAPS?

✓ service area: Prairie Five John Croon

✓ service area: N.W. CAC Ted Heyen 612-269-6578  
218-528-3258

✓ ① General Federation of Women's Clubs

✓ ② Earl Craig  
Urban Coalition 1009 Nicollet, Mpls

✓ ③ Minnesota Retail Federation  
(workshops for commercial)  
Wendy Borsheim  
Metro Square, St Paul

✓ ④ Minnesota Municipal Utilities  
Dick Kuckham  
Buffalo, Minn.

✓ ⑤ Regional Development Commissions  
(list on T. way)

Mrs. Harry P. Larson  
State President  
Minn. Fed. of Women's Clubs  
332 N. 2nd Street  
East Grand Forks Minn 56721  
218-773-0743

~~Neighborhood Energy Alliance~~  
~~Tom Beer~~

✓ Mrs. Jean Larson  
P.O. Box 381  
East Grand Forks 56721



Dear Fred and Chris  
Lanney and I went  
on a walk.

Love,

Marge, Mom + Lanney

Town Meeting - \* Packet to cities  
staffing to hold own  
town meetings  
churches

JC  
Lions  
Kiwanis  
Am Legion

Citizens Advisory Committee  
something prepared

296-9923

or too late now but keep it in mind for  
future

June 10 at 10 AM  
LWV office  
meet Kathy

Introduction:

~~A~~  
Ouzo

June 12 call everyone  
who hasn't answered

Kathy Leaves Aug 3

Routing Slip

July 12

As soon as you have read the attached material, please initial, date and forward it to the others checked on the form. After all have read, please return to the office for appropriate disposition. Thank you.

<u>Route to:</u>	<u>Initial</u>	<u>Date</u>
_____ Borg	_____	_____
_____ Reeves	_____	_____
_____ Waldo	_____	_____
_____ Dunn	_____	_____
_____ Hall	_____	_____
_____ Anderson	_____	_____
_____ Armstrong	_____	_____
_____ Berkwitz	_____	_____
_____ Buffington	_____	_____
_____ Cushing	_____	_____
_____ Kahlenberg	_____	_____
_____ Llona	_____	_____
_____ Maher	_____	_____
_____ Phelan	_____	_____
✓ Poppleton	_____	_____
_____ Rosenblatt	_____	_____
_____ Schmitz	_____	_____
_____ Scribner	_____	_____
_____ Tews	_____	_____
_____ Lucas	_____	_____
_____ Medelman	_____	_____
_____ Thompson	_____	_____
✓ Post	_____	_____

*Have suggested to C/M that they have their chair, Rick, call Marge P re this.*

Pa-County ✓

Lee Duchamel

218-751-4631

What counties?

Ant Tech

224-3087

Sam Long

Dale Horton

MPICG  
Office

376-7554

9:30 PM

739-9048  
733-9096 work



# common cause/minnesota

555 Wabasha Street, Room 307 (612) 227-9139  
St. Paul, Minnesota 55102

PRESIDENT  
Jerry Franck

EXECUTIVE DIRECTOR  
Ellen Sampson

LOBBYIST  
Diane Greensweig

July 6, 1978

To all organizations concerned  
with energy:

*452-5300*  
*Peter Pfister 871-5703*

Common Cause/Minnesota has recently set up an energy task force. In order to avoid duplication of efforts and to promote intergroup cooperation we are sending you this letter. Could you please send us a letter briefly describing your past and future areas of interest in the energy field.

We would like to compile these and distribute them. If you would like all or part of your reply kept confidential please indicate this in your letter.

Also, if you know of other organizations involved in energy that aren't listed below please tell us about them.

Thank you for your help in this project.

Sincerely,

*Steve Horton*

*Richard Pokorny*  
Richard Pokorny, Chairperson  
CC/MN Energy Task Force

RP:n

- dc:ASE Mag.
- ✓ Assn. of App. Tech.
- ✓ Audubon Society
- ✓ ELSR
- ✓ Citizens Utility Coalition
- ✓ Consulting Eng. Coun. of MN
- ✓ COREg
- ✓ ~~QUE~~
- ✓ Cure
- ✓ Issac Walton League
- ✓ League of Women Voters
- ✓ MASIA
- ✓ MECCA
- ✓ MEAL *Minn Alt Energy Lobby*
- ✓ Metro Senior Fed.
- ✓ Minn. Soc. of Arch.

- ✓ MPIRG
- ✓ OGBA
- ✓ Prof. Eng. Soc.
- ✓ RAP
- ✓ Religious Legis. Coaliton
- ✓ Science Museum
- ✓ Sheet Metal Air Cond. Assn.
- ✓ Southside Comm. Enterprises
- ✓ Upper Midwest Council
- ✓ Urban Coalition of MPLS.
- ✓ United Labor Center
- ✓ World Futures Society *Minn.*
- ✓ ISES
- ✓ Sun Day Minnesota

*Ant. Solar Energy Society*  
*Peter Auster get address*  
*Mind Am Solar from*  
*Energy*

*Mary Trigg*  
*Social U of M.*



St Paul League

Winona

Mankato

Woodbury

Bennings

Red Wing

Breckenridge

~~the~~ Freeborn

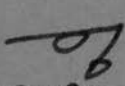
St Louis Park

Golden Valley

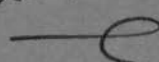
Brooklyn Center

Roanoke

-- first one --

- 1) Jack E. Ross,   
Plant Maintenance  
Sperdy Univac  
2276 Highcrest  
Roseville 55113
- } President,  
Amer. Inst. of  
Plant Engineers



- 2) Crystal Clift  
Zo. Library  
U. of M  
128 Lind Hall  
207 Church SE  
—  55455

Sent  
7/6/78

- 
- 3) Mark St. Lawrence  
Elm Utilization Program  
so Hall  
Christalm 55719
-

First - letter

SENT 6/30/78

~~General~~ MN Federation of Women's Club  
— cc Jean Carson. *cc*  
P.O. Box 381  
E. Grand Forks 56724

---

Earl Craig

Urban Coalition  
1009 Nicollet

---

+ Exec. Dir. S  
of Regional  
Devel. Comm.

MN Retail Federation  
Wendy Borsheim  
Metro Square  
H

---

PP 415, 416  
Blue Book

MN Municipal Utilities  
Dick Korkham  
Buffalo —

---

Public Service Options  
512 Nicollet mall

---

MN Heartland  
P.O. Box 443  
411 Laurel St Brainerd 56401

JUL 19 1978



## LEAGUE OF WOMEN VOTERS OF MINNESOTA

555 WABASHA • ST. PAUL, MINNESOTA 55102 • TELEPHONE (612) 224-5445

June 30, 1978

Mr. Gerald Allen  
Criteria Corporation  
100 North First Street  
Minneapolis, MN 55401

Dear Mr. Allen:

The League of Women Voters of Minnesota received a Department of Energy grant through the League of Women Voters of the United States Education Fund to conduct an energy education project. In cooperation with the Minnesota Energy Agency, League representatives have been trained as energy resource persons for their communities. Four films for general energy education are being secured and will be circulated throughout the state in the public library film network.

In order to avoid duplication of projects, it is important to know what existing or planned energy education projects may be available to Minnesota communities. At the same time, there is a need to know where to direct requests for certain types of energy-related services and information.

For these reasons, the League of Women Voters of Minnesota has contracted with the Minnesota Energy Agency to compile an energy resource directory. The directory will list ongoing and proposed energy-related services, projects and programs available to Minnesota residents through organizations, agencies, utilities, industries and individuals. Copies will go to Minnesota public libraries, government units, AVTI's, and selected schools and colleges.

I am writing to you to request that you describe your ongoing or planned energy education projects, and that you outline the kinds of information/service requests you are equipped to answer on the back of this letter. Kindly return the enclosed form to me within the week.

Thank you for your assistance.

Sincerely,

Margaret Post  
Margaret Post, Manager  
Energy Education Project

P:M

*Margaret,  
I enjoy your presentation  
in Chicago. I hope all is going  
well with your data collection project.  
Sorry for the delay filling out the  
form. Hope to talk with you  
later. Sincerely  
J. Gray*

✓  
Name GERALD E. ALLAN  
Address 100 1ST ST. N. MPLS. MN. 55401 Phone 338-4761  
Organization representing CRITERIA... INC.

What energy education projects do you have at this time?

1. WROTE CURRICULUM FOR RED WING VO-TECH —  
FOR STUDENTS TO DESIGN · REPAIR · & INSTALL ALTERNATIVE ENERGIES
2. PUBLIC AWARENESS WORKSHOPS ON
  - a. alternative energies
  - b. passive design
  - c. Total energy concepts
  - d. underground buildings

What energy-related services do you provide?

- professional design services
  - a. energy audits
  - b. conceptual alternative energy systems
  - c. build designed for max. energy efficiency
  - d. earth sheltered construction

What plans do you have for energy-related education projects or services in the future?

- We are currently building a total energy underground living working environment for Criteria in St. Paul  
it will have: a solar cycle · water cycle · waste cycle · waste cycle
- Also house within building will be an international exhibition center for technologies in operation such as: solar collectors, etc.

Who should contact your organization for energy-related information or services: (i.e. customers, community organizations, residents within a certain geographical area, etc.)?

1. ALMOST ANYONE AS IT RELATES TO SPECIFIC DESIGN PROJ.
2. PUBLIC WORK SHOP -

—NOTE BECAUSE CRITERIA IS A BUSINESS WE DON'T PROVIDE A PUBLIC INFORMATION BUREAU UNLESS IT RELATES TO LARGER GROUPS OR POTENTIAL PROJECTS

Whom should they contact?

Name JERRY ALLAN, MARK RYAN · WILHELM REINDL  
Address CRITERIA... INC. 100 1ST ST N. MPLS. Phone 338-4761

Do you know of other organizations that are providing energy-related projects and information/service? Please name.





## LEAGUE OF WOMEN VOTERS OF MINNESOTA

555 WABASHA • ST. PAUL, MINNESOTA 55102 • TELEPHONE (612) 224-5445

JUL 19 1978

*MANSON*  
*Please respond*  
*Gene*

ROUTING

JUL 3 1978

Admin. \_\_\_\_\_  
P. R. ☒ \_\_\_\_\_  
H. R. \_\_\_\_\_  
CS/PIO \_\_\_\_\_

For your information \_\_\_\_\_  
Take appropriate action \_\_\_\_\_  
Please reply \_\_\_\_\_  
Prepare reply for Chmn. sig \_\_\_\_\_

June 30, 1978

Mr. John Boland, Chairman  
Regional Development Commission  
300 Metro Square Building  
7th and Robert Streets  
St. Paul, MN 55101

Dear Mr. Boland:

The League of Women Voters of Minnesota received a ~~Department of Energy~~ grant through the League of Women Voters of the United States Education Fund to conduct an energy education project. In cooperation with the Minnesota Energy Agency, League representatives have been trained as energy resource persons for their communities. Four films for general energy education are being secured and will be circulated throughout the state in the public library film network. Other \_\_\_\_\_

In order to avoid duplication of projects, it is important to know what existing or planned energy education projects may be available to Minnesota communities. At the same time, there is a need to know where to direct requests for certain types of energy-related services and information.

For these reasons, the League of Women Voters of Minnesota has contracted with the Minnesota Energy Agency to compile an energy resource directory. The directory will list ongoing and proposed energy-related services, projects and programs available to Minnesota residents through organizations, agencies, utilities, industries and individuals. Copies will go to Minnesota public libraries, government units, AVTI's, and selected schools and colleges.

I am writing to you to request that you describe your ongoing or planned energy education projects, and that you outline the kinds of information/service requests you are equipped to answer on the back of this letter. Kindly return the enclosed form to me within the week.

Thank you for your assistance.

Sincerely,

*Margaret Post*

Margaret Post, Manager  
Energy Education Project

P:M

Name John Boland

Address 300 Metro Square Bldg. Phone 291-6359

Organization representing Metropolitan Council

What energy education projects do you have at this time?

None involving energy exclusively. (Energy is a factor influencing a number of Council activities. The Metropolitan Development Guide includes some policies relating to energy. At times energy will receive some public attention here (e.g. public hearings on proposed Development Framework policies).)

What energy-related services do you provide?

None on an on-going basis. In 1977 the Council's Program on Aging did put together an Inventory of Energy Resources and a packet on energy conservation measures for senior citizens. These were distributed to all senior citizen organizations in the Metropolitan Area. (A set of these materials is enclosed).

What plans do you have for energy-related education projects or services in the future?

There is a possibility the Council will develop additional policies addressing energy issues. As part of the process, we may develop educational materials to present background data, identify energy issues facing the region and to recommend methods of dealing with those issues.

Who should contact your organization for energy-related information or services (i.e. customers, community organizations, residents within a certain geographical area, etc.)?

At this time we do not have energy information or provide energy-related services.

Whom should they contact?

Name \_\_\_\_\_

Address \_\_\_\_\_ Phone \_\_\_\_\_

Do you know of other organizations that are providing energy-related projects and information/service? Please name.

Minnesota Energy Agency

Post



## LEAGUE OF WOMEN VOTERS OF MINNESOTA

555 WABASHA • ST. PAUL, MINNESOTA 55102 • TELEPHONE (612) 224-5445

May 18, 1978

Ms. Dixie Diehl, Director of Local Services  
Minnesota Energy Agency  
American Center Building  
150 East Kellogg Boulevard  
St. Paul, MN 55101

Dear Dixie:

We are in receipt of the contractor's copy of the agreement to collect data and write an energy resource directory for the Minnesota Energy Agency.

This letter is to act as an invoice for the first half of the contracted fee, \$750. I would appreciate early payment to cover accruing costs of the project.

Sincerely,

Margaret Post  
League of Women Voters of Minnesota

P:M



## LEAGUE OF WOMEN VOTERS OF MINNESOTA

555 WABASHA • ST. PAUL, MINNESOTA 55102 • TELEPHONE (612) 224-5445

January 31, 1978

Ms. Dixie Diehl, Director of Local Services  
Minnesota Energy Agency  
American Center Building  
St. Paul, MN 55101

Dear Ms. Diehl:

The League of Women Voters of Minnesota (LWVMN) is cooperating with the Minnesota Energy Agency in training citizens to be energy resource persons in their community. Energy resource persons need to know where to go for existing energy-related services, programs and projects within the state. A listing of such information would be valuable to libraries, schools and local governments and the broader public as well.

LWVMN proposes to supply the Minnesota Energy Agency with an energy resource directory including energy-related services and programs available to Minnesota residents through utilities, organizations, agencies and individuals. The LWVMN, through Margaret Post, Project Director, will be wholly responsible for the information collected, its organization, editing, and typing. /

All figures are based on an assumption of one 50 standard size page resource directory. Total cost to the Minnesota Energy Agency would be \$1,000, exclusive of printing and mailing costs. If LWVMN should be responsible for the printing of 2,000 copies, total cost would be \$3,500. This figure is also exclusive of any mailing costs. The amount will be payable upon receipt of the material. Checks should be made to the League of Women Voters of Minnesota.

Sincerely,

Margaret Post  
League of Women Voters of Minnesota

P:M



The League of Women Voters of Minnesota received a Department of Energy grant through the League of Women Voters of the United States Education Fund to conduct an energy education project. In cooperation with the Minnesota Energy Agency, League representatives have been trained as energy resource persons for their communities. Four films for general energy education are being secured and will be circulated throughout the state in the public library film network.

In order to avoid duplication of projects, it is important to know what existing or planned energy education projects may be available to Minnesots communities. At the same time, there is a need to know where to direct requests for certain types of energy-related services and information.

For these reasons, the League of Women Voters of Minnesota has contracted with the Minnesota Energy Agency to compile an energy resource directory. The directory will list ongoing and proposed energy-related services, projects and programs available to Minnesota residents through organizations, agencies, utilities, industries and individuals. Copies will go to Minnesota public libraries, government units, AVTI's, and selected schools and colleges.

I am writing to you to request that you describe your ongoing or planned energy education projects, and that you outline the kinds of information/service requests you are equipped to answer on the back of this letter. Kindly return the enclosed form to me within the week.

Thank you for your assistance.

Sincerely,

Margaret Post, Manager  
Energy Education Project



Name \_\_\_\_\_

Address \_\_\_\_\_ Phone \_\_\_\_\_

Organization representing \_\_\_\_\_

What energy education projects do you have at this time?

What energy-related services do you provide?

What plans do you have for energy-related education projects or services in the future?

Who should contact your organization for energy-related information or services (i.e. customers, community organizations, residents within a certain geographical area, etc.)?

Whom should they contact?

Name \_\_\_\_\_

Address \_\_\_\_\_ Phone \_\_\_\_\_

Do you know of other organizations that are providing energy-related projects and information/service? Please name.

## DEVELOPMENT OF REGIONS IN MINNESOTA

The Regional Development Act of 1969 provided for creation of Regional Development Commissions (RDC) in Minnesota. Twelve RDC's have been created which together with the Metropolitan Council (established in 1967) cover all areas of the state.

### Steps in Organizing

Most of the organizational activity occurred during 1973, including: selection of members, selection of officers, preparation and adoption of bylaws, selection of office location and recruiting of executive director and staff. The commissions were formed only after local governments representing a majority of the population in each region petitioned the governor requesting their formation.

Each commission selects its own chairman, staff, and develops its own work program and priorities for action.

### Role in Planning

Each fiscal year, each commission prepares a detailed overall program design or work program to use as a management tool in conducting its activities. These work programs are vehicles for involving state agencies in the review of commission plans. State agencies have been invited to participate in the review sessions on each commission's plan.

The governor has designated RDC's as regional clearinghouses. This means they have the authority to review applications from governmental units for state and federal assistance.

The Office of Local and Urban Affairs in State Planning Agency has been charged with responsibility of coordinating the state's assistance program to RDC's.

## REGIONAL DEVELOPMENT COMMISSIONS

State Planning Agency  
Room 101, Capitol Square Building  
555 Cedar Street  
St. Paul 55101  
(612) 296-2007

**Law provides:** Membership of regional development commissions consists of local elected officials — county, city, township, school board — who are selected by the groups they represent and representatives of public interest groups (selected by the elected officials) in the region. Minnesota Statutes, Chapter 462.

All of the twelve commissions are now organized, staffed and operating. The Metropolitan Council, established by Minnesota Statutes, Chapter 473B, represents Region 11.

Region Northwest	✓	Established 2/8/73	Chairman Ervin Strandquist Newfolden Minnesota 56738 (218) 874-2305	Executive director Eugene Abbott 425 Woodland Avenue Crookston, Minnesota 56716 (218) 281-1396
Region Northwesters	✓	4/23/71	M. J. Haack 2508 Calihan Avenue Bemidji, Minnesota 56601	John Ostrem Mental Health Building Box 584 Bemidji, Minnesota 56601 (218) 751-3108
Region Northwesters	✓	11/20/69	Innis (Sonny) Nesbitt 109 Park Avenue International Falls, Minnesota 56649 (218) 283-3316	Rudy Esala 200 Arrowhead Place 211 West Second Street Duluth, Minnesota 55802 (218) 722-5545

415

COUNTY OUTLINE MAP  
OF  
MINNESOTA  
SHOWING  
REGIONAL DEVELOPMENT  
COMMISSION DISTRICTS



The League of Women Voters of Minnesota is compiling information on energy-related services, programs and projects available to Minnesotans. Information is being arranged by region and county indicating energy education programs, research and services. The Minnesota Energy Agency will publish the directory. It will be provided to local governments, energy resource persons and public libraries within the state.

We would like to include your organization in our directory, but we have not received a completed questionnaire. Another copy of the questionnaire is on the reverse side of this letter. Kindly fill it out and return it today. The deadline for directory compilation is near.

Thank you for your assistance. Your cooperation will help to make the directory a more complete guide for Minnesota citizens and statewide energy planning.

Sincerely,

Margaret Post, Manager  
Energy Education Project

P:M



# LEAGUE OF WOMEN VOTERS OF MINNESOTA

555 WABASHA • ST. PAUL, MINNESOTA 55102 • TELEPHONE (612) 224-5445

March 15, 1978

## PROJECT PROPOSAL: ENERGY RESOURCE DIRECTORY FOR MINNESOTA

The League of Women Voters of Minnesota proposes to produce an Energy Resource Directory for Minnesota in cooperation with the Minnesota Energy Agency.

### Definition

An Energy Resource Directory will be a compilation of existing energy-related services, programs and projects available in Minnesota. It will be designed to aid individuals and groups get specific energy-related information and services. In looseleaf format it would be part of the Energy Awareness Handbook for local governments in Minnesota designed by the Minnesota Energy Agency. The information in the Energy Resource Directory would also be made available to the public by distributing copies of the Directory to public libraries, vocational-technical energy resource centers, community colleges and key energy resource persons including League of Women Voters members trained as energy resource people at one of the training sessions offered jointly by the League of Women Voters of Minnesota and the Minnesota Energy Agency.

### Objectives

The Energy Resource Directory will

- direct households to appropriate groups or agencies for energy-related assistance or information;
- provide easy access to existing energy resources for groups interested in promoting energy education activities and programs in their communities;
- make explicit to the public the specific services offered by existing energy-related projects and programs;
- provide a reference tool that can be easily updated;
- provide a tangible measure of existing energy efforts in Minnesota;
- provide the groundwork for evaluation of existing energy efforts in Minnesota and a base for long-term energy service planning for the state.

### Program Description

Information about existing energy-related services, programs, and projects available in Minnesota will be gathered by mailed questionnaires and personal interviews. Information will be gathered not only from Minnesota-based groups, but also from national energy-related organizations that serve Minnesota. The emphasis of the Directory will be on services available to regional or larger-than-regional areas of the state. Of particular importance in the project will be the definition of services available through



PROJECT PROPOSAL: ENERGY RESOURCE DIRECTOR FOR MINNESOTA - 2

the Minnesota Energy Agency and other governmental bodies. The Directory will also include programs available in specific metropolitan areas of the state. In addition, the Directory will include descriptions of exemplary programs servicing small population centers as examples of what other communities can do.

The Directory will include the following information about each energy-related service, program, or project:

- . name of organization
- . address, phone, and contact person
- . description of existing and planned program(s), project(s), and/or service(s)
- . definition of clientele the program(s), project(s), and/or service(s) will serve.

Approximately 150 questionnaires will be mailed. All organizations not responding to the questionnaire will be contacted by phone.

Definition of Responsibilities

The Energy Resource Directory will be produced cooperatively by the League of Women Voters of Minnesota and the Minnesota Energy Agency.

The League of Women Voters of Minnesota will be responsible for

- . collecting information about existing and planned energy-related services, programs, and projects in Minnesota;
- . organizing the collected data and writing the Directory;
- . typing the Directory.

The Minnesota Energy Agency will be responsible for

- . printing the Directory;
- . mailing the Directory.

Timetable

March 1 - April 15	Gathering of information by questionnaire and interview
April 15 - May 1	Organization and writing of Directory
June 1	Completion of Directory

Project Budget for League of Women Voters Responsibilities

The following figures only cover the costs to the League of Women Voters of Minnesota for carrying out its responsibilities listed above. The costs to the Minnesota Energy Agency for printing and mailing the Directory are in addition to the \$1,550 budget listed below.

	<u>Project Budget</u>
Personnel	
Project Manager	\$ 500
Project Director	500
Supplies	
Postage	25
Materials	25
Copying	20
Secretarial Time	125
Travel and Telephone	110
Overhead and Fiscal Administration	245
	<u>\$1,550</u>



first one

Bob Ambrose

Room 122

State Capitol

N 55155

Sent 7/7/78

new Gene O'Neill  
Energy Shed  
1639 Terrace Drive  
Roseville, Minn 55118  
Sent 5/31  
633-0672

new Enerco Corp. 545-4440  
9841 13th Ave North  
Plymouth, Minn  
55441

old Cooperative Power Assoc.  
Newsletters  
3316 N. 66th Street  
Mpls. 55435

new  
O. P. films  
am E  
5-2-2

No Card

Jon Siegel

I CAN

825 Sibley Memorial  
Hwy

St Paul 55118

---

## CHAPTER 6

## LOCAL ADMINISTRATION

Region	Established	Chairman	Executive director
✓ 4 (West Central)	2/2/73	Leslie Aukes Norcross Minnesota 56274 (612) 563-8382	John Sem Administration Building Fergus Falls Community College Fergus Falls, Minnesota 56537 (218) 739-3356
5 (Region Five)	7/6/73	Mary Koep 123 Laurel Brainerd, Minnesota 56401 (218) 829-9793	Robert F. Benner 102 - 6th Street North Staples, Minnesota 56479 (218) 894-3233
6E (Six East)	3/29/73	Earl Larson (Acting) Rt. 1 Willmar, Minnesota 56201 (612) 235-4326	Eugene Hippe City Auditorium 311 West 6th Street Willmar, Minnesota 56201 (612) 235-8504
✓ 6W (Upper Minnesota Valley Regional Development Commission)	5/18/73	John Thompson 800 - 16th Street South Benson, Minnesota 56215 (612) 843-2573	Dennis Dahlem 323 West Schlieman Appleton, Minnesota 56208 (612) 289-1981
✓ 7E (East Central)	7/14/73	William Jokela Box 311 Sandstone, Minnesota 55072 (612) 245-2217	John Hill Kanabec County Courthouse 18 North Vine Street Mora, Minnesota 55051 (612) 679-4065
nothing 7W (Central Minnesota)	8/23/73	Ralph Thompson Belgrade Minnesota 56312 (612) 346-2637	Otto Schmid 2700 1st Street North St. Cloud, Minnesota 56301 (612) 253-7870
✓ 8 (Southwest)	6/12/73	F. A. "Jim" Miller 774 Des Moines Drive Windom, Minnesota 56101 (507) 831-1951	Mark Atchison 2711 Broadway Slayton, Minnesota 56172 (507) 836-8549
✓ 9 (Region Nine)	2/25/72	Carl Wyczawski 101 North Minnesota New Ulm, Minnesota 56073 (507) 642-3630	Terence Stone Manpower Services Building 709 North Front Street Mankato, Minnesota 56001 (507) 387-5643
416 ✓ 10 (Southeastern Minnesota)	8/31/73	Robert Larson 420 N.W. Second St. Faribault, Minnesota 55021 (507) 334-3573 (home) (507) 334-9456 (business)	Rolf Middleton 301 Marquette Bank Building So. Broadway at 2nd St. SE Rochester, Minnesota 55901 (507) 285-2550
✓ 11 (Metropolitan Council)	8/9/67*	John Boland 300 Metro Square Building 7th and Robert Streets St. Paul, Minnesota 55101 (612) 291-6359	

\*created by special act of legislature

**Functions:**

Minnesota's Regional Development Commissions (RDCs) were formed by counties and municipalities representing a majority of the population in each region (see map) who petitioned the governor to establish a regional development commission as provided for in the Regional Development Act of 1969. The purpose of this act is: "To facilitate intergovernmental cooperation and to insure orderly and harmonious coordination of state, federal, and local comprehensive planning and development programs for the solution of economic, social, physical, and governmental problems of the state and its citizens . . ."

RDCs are required to prepare and adopt a comprehensive development plan for their region and to review all applications from governmental units requesting loans or grants from federal and state agencies when the application is clearly related to the region. They may also carry out studies and research and provide technical assistance to local governments in the region.

Mr. Gerald Allen  
Criteria Corp  
100 N. 1st ✓

Sent 6/30/78

—

First Questionnaire

Gene O'Neill  
Energy Shed  
1639 Terrace Dr.  
Roseville 55113  
r Edie Allison

Second

Dr. Wendell Bradley  
Coalition of ~~Rural~~ Environmental Groups  
Box 1339

Gustavus Adolphus Coll.

St. Peter 56082

— "add -- C / r

— " c power  
line groups



Approximately 150 questionnaires will be mailed. All organizations not responding will be contacted by phone.

#### TIMETABLE

March 1-May 15    Gathering of Information  
May 15-June 1    Organization and Writing  
June 1-June 15    Completion of Directory

#### BUDGET

Personnel	
Project Manager	\$500.
Project Director	500.
Supplies	
Postage	25.
Materials	25.
Copying	20.
Miscellaneous	
Secretarial Time	125.
Travel and Telephone	110.
Overhead and Fiscal Administration	<u>245.</u>
	\$1550.

## Project Proposal: Energy Resource Directory for Minnesota

The League of Women Voters of Minnesota proposes to produce an Energy Resource Directory for Minnesota in cooperation with the Minnesota Energy Agency.

### Definition

An Energy Resource Directory will be a compilation of existing energy-related services, programs and projects available in Minnesota. It will be designed to aid individuals and groups get specific energy-related information and services. In loose-leaf format it would be part of the Energy Awareness Handbook for local governments in Minnesota designed by the Minnesota Energy Agency.

The information in the Energy Resource Directory would also be made available to the public by distributing copies of the Directory to public libraries, vocational-technical energy resource centers, community colleges and key energy resource persons including League of Women Voters members trained as energy resource people at one of the training sessions offered jointly by the League of Women Voters of Minnesota and the Minnesota Energy Agency.

## Objectives

The Energy Resource Directory will

- direct households to appropriate groups or agencies for energy-related assistance or information;
- provide easy access to existing energy resources for groups interested in promoting energy education activities and programs in their communities;
- make explicit to the public the specific services offered by existing energy-related projects and programs;
- provide a reference tool that can be easily updated;
- provide a tangible measure of existing energy efforts in Minnesota;
- provide the ground-work for evaluation of existing energy efforts in Minnesota and a base for long-term energy service planning for the state.

## Program Description

Information about existing energy-related services, programs, and projects available in Minnesota will be gathered by mailed questionnaires and personal interviews. Information will be gathered not only from Minnesota-based groups, but also from national energy-related organizations that serve Minnesota. The emphasis of the Directory will be on services available to regional or larger than regional areas of the state. The Directory will also include programs available in specific metropolitan areas of the state. In addition, the Directory will include descriptions of exemplary programs servicing small population centers as examples of what other communities can do.

Of particular importance in the project will be the definition of service available through the Minnesota Energy Agency and other governmental bodies.

The directory will include the following information about each energy-related service, program, or project:

- name of organization
- address, phone, and contact person
- description of <sup>existing and planned</sup> program(s), project(s), and/or service(s)
- definition of clientele the program(s), project(s), and/or service(s) will serve



Approximately 150 questionnaires will be mailed. All organizations not responding to the questionnaire will be contacted by phone.

### Definition of Responsibilities

The Energy Resource Directory will be produced cooperatively by the League of Women Voters of Minnesota and the Minnesota Energy Agency. The League of Women Voters of Minnesota will be responsible for

- collecting information about existing and planned energy-related services, programs and projects in Minnesota;
- organizing the collected data and writing the Directory;
- typing the Directory.

The Minnesota Energy Agency would be responsible for

- printing the directory;
- mailing the directory.

### timetable

(written as on Marge's draft)

### Project Budget for League of Women Voters Responsibilities

The following figures <sup>only</sup> cover the costs to the League of Women Voters of Minnesota for carrying out their responsibilities listed above. The costs to the Minnesota Energy Agency for printing and mailing the directory are in addition to the \$1550 budget listed below.

(written as on Marge's draft.)



MAR 10 1978

## Project Proposal

## State Energy Resource Directory

## Definition

An Energy Resource Directory will be a directory of existing energy-related services, programs and projects available in Minnesota, designed as a resource tool that would be convenient to the public through public libraries, vocational-technical energy resource centers, community colleges and key energy resource persons. In loose leaf format it would be part of the Energy Awareness Handbook for local governments in Minnesota designed by the Minnesota Energy Agency. *The directory would be*

*WVME would be responsible for information collected, its organization, editing and typing.*

*For the WVME*  
 Objectives would be to develop a directory in cooperation with the Minnesota Energy Agency, collecting information and compiling it into a directory format. The MEA would be responsible for printing and mailing of the directory. The directory should do the following:

1. Provide easy access to existing energy resources for the public interested in promoting energy education, activities and programs in their communities.
2. Provide a tangible measure of existing energy efforts in Minnesota for coordination and evaluation of existing programs, services, etc.
3. Provide a definition of service areas covered by existing energy-related projects and programs as projected by governmental units, volunteer organizations, individuals, utilities and private enterprise.
4. Provide a reference tool *helps person see what service boundaries are* that can be easily updated for long-term energy coordination efforts in Minnesota.

## Program Description

This three month project intends to gather information by questionnaire and personal interview and compilations from other existing studies on ongoing and planned energy-related projects, programs and services available to Minnesota residents. Emphasis will be on Minnesota programs, but questionnaires will be sent to national energy-related organizations that serve Minnesota as well. Emphasis will be on services available to regional or larger than regional areas, but a section will indicate particular programs available to larger cities of the state if they exist. Exemplary programs servicing small population centers will be highlighted as examples of what communities can do.

The project intends to utilize the resources of the Minnesota Energy Agency for contacts and information related to existing energy efforts in Minnesota. Of particular importance in the project will be the definition of services available through the MEA and other governmental bodies. Through the questionnaire additional contacts will be sought.

The directory will include the following information about each resource included:

- Name of organization
- Address, Phone and Contact Person
- Existing programs, projects and services. Who should contact the organization for such services.
- Planned programs, projects and services.

Approximately 150 questionnaires will be mailed. All organizations not responding to the questionnaire will be contacted by phone for the information relating to the directory.

## Timetable

March 1-April 15	Gathering of information by questionnaire and interview
April 15-May 1	Organization and writing of directory
June 1	Completion of directory

## Project Budget \*

Personnel	
Project manager	\$500
Project editor	500
Supplies	
Postage	25
Supplies	25
Copying	20
Secretarial time	125
Travel and telephone	60 + 50
Overhead and fiscal administration	245
	\$1500

St. P. Dispatch 9 March p. 50

National Heating and Cooling Information Center

(toll free 800-523-2929) will give you names of

those in your  
area who have  
participated

in the HUD

solar program

and info on

solar equipment

(but no advice on brand names)

Banks - have they hired consultants to advise banks on  
how good solar systems are e.g. Calif.

gov & industry working on performance  
standards for solar equipment

Dispatch 10 Mar p. 22

Eagun one of 4  
sites for DOE  
national solar energy  
research centers

200 scientists &  
researchers w/in

5 yrs.

Budget \$7m - \$87m

Second letter sent 6/27/78

MN Society of Prof. Engineers  
Griggs Midway  
Room 2775  
N 55104

---

Robert Michaud

✓ Marge Dickson

---

Scott Carver Economic Council  
Judson Kenyon  
6th } Oak  
Carver — 55315

---

C. owners & managers &  
Arthur Olofson  
So C C  
— 55402

---

Laura Palmer  
ENERCO Corp.  
9841 - 13 }  
Ply 55441

---

Clay Wilkin & Council  
512 main  
Moorhead 56560



AUG 16 1978



## LEAGUE OF WOMEN VOTERS OF MINNESOTA

555 WABASHA • ST. PAUL, MINNESOTA 55102 • TELEPHONE (612) 224-5445

July 6, 1978

Mr. Mark St. Lawrence  
Elm Utilization Program  
City Hall  
Chisholm, MN 55719

Dear Mr. St. Lawrence:

The League of Women Voters of Minnesota received a Department of Energy grant through the League of Women Voters of the United States Education Fund to conduct an energy education project. In cooperation with the Minnesota Energy Agency, League representatives have been trained as energy resource persons for their communities. Four films for general energy education are being secured and will be circulated throughout the state in the public library film network.

In order to avoid duplication of projects, it is important to know what existing or planned energy education projects may be available to Minnesota communities. At the same time, there is a need to know where to direct requests for certain types of energy-related services and information.

For these reasons, the League of Women Voters of Minnesota has contracted with the Minnesota Energy Agency to compile an energy resource directory. The directory will list ongoing and proposed energy-related services, projects and programs available to Minnesota residents through organizations, agencies, utilities, industries and individuals. Copies will go to Minnesota public libraries, government units, AVTI's, and selected schools and colleges.

I am writing to you to request that you describe your ongoing or planned energy education projects, and that you outline the kinds of information/service requests you are equipped to answer on the back of this letter. Kindly return the enclosed form to me within the week.

Thank you for your assistance.

Sincerely,

*Margaret Post*

Margaret Post, Manager  
Energy Education Project

P:M

Name MARK ST. LAWRENCE  
Address CITY HALL, CHISHOLM, MN 55719 Phone 218-254-3353  
Organization representing CITY OF CHISHOLM  
What energy education projects do you have at this time?  
NONE AT THIS TIME

What energy-related services do you provide?

ASSIST PROPERTY OWNERS WITH INFORMATION ON HOME ENERGY  
AUDITS, INSULATION, WEATHERSTRIPPING, ETC.

What plans do you have for energy-related education projects or services in the future? NONE ARE PLANNED AT THIS TIME.

Who should contact your organization for energy-related information or services (i.e. customers, community organizations, residents within a certain geographical area, etc.)?

RESIDENTS AND BUSINESSES WITHIN THE CITY OF CHISHOLM

Whom should they contact?

Name MARK ST. LAWRENCE  
Address CITY HALL, CHISHOLM MN 55719 Phone 1-218-254-3353

Do you know of other organizations that are providing energy-related projects and information/service? Please name.





AUG 8 1978

## LEAGUE OF WOMEN VOTERS OF MINNESOTA

555 WABASHA • ST. PAUL, MINNESOTA 55102 • TELEPHONE (612) 224-5445

May 8, 1978

Mr. Philip R. Goodrich  
305 Agricultural Engineering  
University of Minnesota  
St. Paul, MN 55108

Dear Mr. Goodrich:

The League of Women Voters of Minnesota received a Department of Energy grant through the League of Women Voters of the United States Education Fund to conduct an energy education project. In cooperation with the Minnesota Energy Agency, League representatives have been trained as energy resource persons for their communities. Four films for general energy education are being secured and will be circulated throughout the state in the public library film network.

In order to avoid duplication of projects, it is important to know what existing or planned energy education projects may be available to Minnesots communities. At the same time, there is a need to know where to direct requests for certain types of energy-related services and information.

For these reasons, the League of Women Voters of Minnesota has contracted with the Minnesota Energy Agency to compile an energy resource directory. The directory will list ongoing and proposed energy-related services, projects and programs available to Minnesota residents through organizations, agencies, utilities, industries and individuals. Copies will go to Minnesota public libraries, government units, AVTI's, and selected schools and colleges.

I am writing to you to request that you describe your ongoing or planned energy education projects, and that you outline the kinds of information/service requests you are equipped to answer on the back of this letter. Kindly return the enclosed form to me within the week.

Thank you for your assistance.

Sincerely,

*Margaret Post*

Margaret Post, Manager  
Energy Education Project

TO

P:M

Name Philip R. Goodrich  
Address Dept. of Agr. Engr., St. Paul 55108 Phone 373 0764  
Organization representing Univ of Minnesota

What energy education projects do you have at this time?

None

What energy-related services do you provide?

consultation on methane generation and  
Recepting of Animal Manures

What plans do you have for energy-related education projects or services in the future?

none in addition

Who should contact your organization for energy-related information or services (i.e. customers, community organizations, residents within a certain geographical area, etc.)?

Minnesota Residents

Whom should they contact?

Name Philip R. Goodrich or David P. Timson  
Address Dept. of Agr. Engr. U of M Phone 373-0764  
St. Paul Minn

Do you know of other organizations that are providing energy-related projects and information/service? Please name.

Agricultural Extension Service  
Univ of Minn

JUL 10 1978



## LEAGUE OF WOMEN VOTERS OF MINNESOTA

555 WABASHA • ST. PAUL, MINNESOTA 55102 • TELEPHONE (612) 224-5445

July 7, 1978

Mr. Bob Ambrose  
Room 122  
State Capitol  
St. Paul, MN 55155

Dear Mr. Ambrose:

The League of Women Voters of Minnesota received a Department of Energy grant through the League of Women Voters of the United States Education Fund to conduct an energy education project. In cooperation with the Minnesota Energy Agency, League representatives have been trained as energy resource persons for their communities. Four films for general energy education are being secured and will be circulated throughout the state in the public library film network.

In order to avoid duplication of projects, it is important to know what existing or planned energy education projects may be available to Minnesota communities. At the same time, there is a need to know where to direct requests for certain types of energy-related services and information.

For these reasons, the League of Women Voters of Minnesota has contracted with the Minnesota Energy Agency to compile an energy resource directory. The directory will list ongoing and proposed energy-related services, projects and programs available to Minnesota residents through organizations, agencies, utilities, industries and individuals. Copies will go to Minnesota public libraries, government units, AVTI's, and selected schools and colleges.

I am writing to you to request that you describe your ongoing or planned energy education projects, and that you outline the kinds of information/service requests you are equipped to answer on the back of this letter. Kindly return the enclosed form to me within the week.

Thank you for your assistance.

Sincerely,

*Margaret Post*

Margaret Post, Manager  
Energy Education Project

P:M

AUG 3 1978

Name ROBERT P. AMBROSE  
Address LT. GOVERNOR'S OFFICE  
ROOM 122, STATE CAPITOL, ST. PAUL 55155 Phone 612/296-2374  
Organization representing GOVERNOR'S REPRESENTATIVE, MINNESOTA ENVIRONMENTAL  
What energy education projects do you have at this time? QUALITY BOARD

SEE ATTACHED SUMMARY FROM 1977-1978 MINNESOTA  
LEGISLATIVE MANUAL.

What energy-related services do you provide?

What plans do you have for energy-related education projects or services in the future?

Who should contact your organization for energy-related information or services (i.e. customers, community organizations, residents within a certain geographical area, etc.)?

Whom should they contact?

Name MARY SULLIVAN, ADMINISTRATOR, EQB, 100 CAPITOL SQUARE BLDG.,  
Address 550 CEDAR ST., ST. PAUL 55101 Phone 296-2723

Do you know of other organizations that are providing energy-related projects and information/service? Please name.



**LEAGUE OF WOMEN VOTERS OF MINNESOTA**

555 WABASHA • ST. PAUL, MINNESOTA 55102 • TELEPHONE (612) 224-5445

RECEIVED

JUL 14 1978

MICHAUD, COOLEY, HALLBERG  
ERICKSON & ASSOCIATES, INC.

July 13, 1978

Mr. Robert Michaud  
Minnesota Society of Professional Engineers  
310 Plymouth Building  
Minneapolis, MN 55402

Attention Marge Dickson

Dear Mr. Michaud:

The League of Women Voters of Minnesota is compiling information on energy-related services, programs and projects available to Minnesotans. Information is being arranged by region and county indicating energy education programs, research and services. The Minnesota Energy Agency will publish the directory. It will be provided to local governments, energy resource persons and public libraries within the state.

We would like to include your organization in our directory, but we have not received a completed questionnaire. Another copy of the questionnaire is on the reverse side of this letter. Kindly fill it out and return it today. The deadline for directory compilation is near.

Thank you for your assistance. Your cooperation will help to make the directory a more complete guide for Minnesota citizens and state-wide energy planning.

Sincerely,

*Margaret Post*

Margaret Post, Manager  
Energy Education Project

P:M



Name WALTER R. MURRAY  
Address 310 PLYMOUTH BUILDING Phone 339-4941  
Organization representing MICHAEL COOLEY HALLBERG ERICKSON & ASSOC.  
What energy education projects do you have at this time?

SEE ATTACHED LIST

What energy-related services do you provide?

SEE ATTACHED LIST

What plans do you have for energy-related education projects or services in the future?

SEE ATTACHED LIST

Who should contact your organization for energy-related information or services (i.e. customers, community organizations, residents within a certain geographical area, etc.)?

COMMERCIAL, INDUSTRIAL, INSTITUTIONAL  
ORGANIZATIONS WHO NEED ENERGY CONSERVATION  
STUDIES OR ANALYSIS

Whom should they contact?

Name WALTER R. MURRAY  
Address 310 PLYMOUTH BUILDING Phone 339-4941  
MINNEAPOLIS 55402

Do you know of other organizations that are providing energy-related projects and information/service? Please name.

## ENERGY ANALYSIS SERVICES

As consulting engineers to numerous major clients on a continuous basis, it has been incumbent upon Michaud, Cooley, Hallberg, Erickson & Associates, Inc. to become expert in the specialized area of energy services.

These services include energy studies and analysis, energy design standards for new buildings, and programs of planning, utilization and management of power and fuel. The firm also offers clients programmed operation and monitoring of all mechanical and electrical building systems through a central control center operated daily on a 24 hour schedule, seven days a week.

MCHE has recently completed comprehensive Energy Studies for the following clients:

- |   |   |
|---|---|
| 1. Rochester State Hospital<br>Ten Building Complex                                     | 750,000 Sq. Ft.                                       |
| 2. U.S. Postal Service Facilities<br>Bulk Main Depot at Egan<br>Minneapolis<br>St. Paul | 342,700 Sq. Ft.<br>563,000 Sq. Ft.<br>757,000 Sq. Ft. |
| 3. Olympia Brewing Co.<br>St. Paul - Steam Consumption Analysis                         |   |
| 4. Northwestern Hospital & Sister Kenny Institute<br>Minneapolis - 5 Buildings          | 481,600 Sq. Ft.                                       |
| 5. Radisson South Hotel<br>Edina  | 422,000 Sq. Ft.                                       |
| 6. Control Data Corporation<br>Normandale Plant   | 371,000 Sq. Ft.                                       |
| 7. Foley Manufacturing<br>Minneapolis   | 156,000 Sq. Ft.                                       |
| 8. Pako Manufacturing<br>Golden Valley  | 332,425 Sq. Ft.                                       |
| 9. Target Stores<br>Nationally - 60 Buildings   | 6,800,000 Sq. Ft.                                     |
| 10. Carter Hawley Hale Stores, Inc.<br>Los Angeles, California                          |   |
| a. Nieman Marcus Stores, 10 bldgs.  | 1,500,000 Sq. Ft.                                     |
| b. Broadway Stores, 46 bldgs.   | 9,000,000 Sq. Ft.                                     |
| c. Emporium Stores, 14 bldgs.   | 3,500,000 Sq. Ft.                                     |
| d. Weinstock Stores, 10 bldgs.  | 1,600,000 Sq. Ft.                                     |
| e. Capwell Stores, 7 bldgs.   | 2,000,000 Sq. Ft.                                     |
| f. Bergdorf's, 2 bldgs.   | 400,000 Sq. Ft.                                       |

11. Radisson Mart Minneapolis	210,000 Sq. Ft.
12. Cambridge State Hospital Fifteen Building Complex	650,000 Sq. Ft.
13. Veteran's Administration Center, 13 Bldgs. Fargo, North Dakota	222,000 Sq. Ft.
14. Northern Federal Office Building St. Paul	173,000 Sq. Ft.
15. Federal Reserve Bank Minneapolis	700,000 Sq. Ft.
16. Thorpe Building Minneapolis	52,650 Sq. Ft.
17. Dain Tower Minneapolis	187,000 Sq. Ft.

Energy Studies Currently in Process:

1. Little Falls School District	
2. Radisson Hotel Downtown Minneapolis	407,000 Sq. Ft.
3. Radisson Inn Plymouth	103,000 Sq. Ft.
4. Radisson Hotel St. Paul	433,000 Sq. Ft.
5. Dayton-Hudson Corporation Shopping Centers:	
Brookdale, Minneapolis	520,000 Sq. Ft.
Southdale, Minneapolis	880,000 Sq. Ft.
Ridgedale, Minneapolis	494,000 Sq. Ft.
Rosedale, Roseville	580,000 Sq. Ft.
Eastland, Detroit, Michigan	1,500,000 Sq. Ft.
Northland, Detroit, Michigan	2,000,000 Sq. Ft.
Southland, Detroit, Michigan	700,000 Sq. Ft.
Westland, Detroit, Michigan	832,000 Sq. Ft.
Genesee Valley, Flint, Michigan	682,000 Sq. Ft.
6. State of Minnesota Capitol Complex Buildings	
State Capitol	281,000 Sq. Ft.
Department of Transportation	369,000 Sq. Ft.
Centennial Building & Ramp	323,000 Sq. Ft.
Historical	80,000 Sq. Ft.
Administration Building & Ramp	180,000 Sq. Ft.
Veteran's Building	85,300 Sq. Ft.
Capitol Heating Plant	12,200 Sq. Ft.
Maintenance Building	24,500 Sq. Ft.

7. Osseo School District  
Minneapolis
8. Lakeville School District  
Minneapolis
9. Chisago Lakes School District
10. Forest Lake School District
11. Taylors Falls School District
12. Naegele Advertising Building 190,000 Sq. Ft.
13. Veterans Hospital Complex  
Miles City, Montana 125,000 Sq. Ft.

Energy Design Standards for New Buildings:

1. Dayton-Hudson Properties, Regional Shopping Centers
2. Dayton-Hudson Properties, Department Stores
3. Dayton-Hudson Properties, Target Stores
4. Minnesota Mining & Manufacturing  
Lake Elmo Industrial Campus
5. Carter, Hawley, Hale Stores, Inc., All Divisions

On-Going Energy Monitoring/Monthly Report Programs:

1. Radisson Hotel Corporation  
Minneapolis Downtown  
Plymouth  
St. Paul  
South  
Radisson Mart
2. Dayton-Hudson Corporation  
Target Stores, 60 Bldgs., Nationally
3. Carter, Hawley, Hale Stores, Inc.  
Broadway, 46 Bldgs.  
Capwell's, 7 Bldgs.  
Bergdorf's, 2 Bldgs.  
Emporium, 14 Bldgs.  
Nieman-Marcus, 10 Bldgs.  
Weinstock's, 10 Bldgs.
4. Forest Lake School District
5. Chisago Lakes School District
6. Taylors Falls School District



manual:

Page  
333  
332  
332  
331

### WATER RESOURCES BOARD

Room 206, 555 Wabasha  
St. Paul 55102  
(612) 296-2840

**Law provides:** that the board is composed of five members appointed for six-year terms by the governor and confirmed by the senate. (Minnesota Statutes 105.71)

Member:	Residence:	Office:	Term expires:
Dr. Robt. T. Moline	St. Peter	Chairman	1978
Richard Pfallinger	Blue Earth		1980
F. Robt. Starr	Redwood Falls	Vice Chairman	1977
Duane Ekman	Argyle	Secretary	1981
vacancy	—	—	—

Executive Secretary: Erling M. Weiberg

#### Function:

The board has jurisdiction in the establishment of watershed districts and related matters (Minnesota Statutes, Chapter 112).

By means of intervention proceeding (Minnesota Statutes, Sections 105.72-105.79) the board has the duty of resolving water policy questions arising between governmental departments or between an individual or individuals and a governmental department.

### ENVIRONMENTAL QUALITY COUNCIL-BOARD

Capitol Square Building, Rm. 100  
St. Paul 55101  
(612) 296-3985

**Law provides:** the environmental quality council is composed of the heads of seven state agencies: agriculture, energy, health, transportation, natural resources, pollution control, and state planning; a representative of the governor's office; and four citizen members appointed by the governor from the citizens advisory committee\*. (Minnesota Statutes Sec. 116 C.01)

Member:	Title:	Representing:	Term expires:
Peter Vanderpoel	Chairman, Director	State Planning Agency	—
<del>vacancy</del> <b>JOE ALEXANDER</b>	Commissioner	Natural Resources	—
<del>Annice Brooks</del> <b>AMBROSE</b>	Special Assistant to the Governor	<b>'s REPRESENTATIVE</b>	—
Sandra Gardebring	Exec. Director	Pollution Control Agency	—
Jim Harrington	Commissioner	Transportation	—
Warren Lawson	Commissioner	Health	—
Barbara Lukermann	citizen member	at - large	1979
<del>Richard Magnusson</del> <b>MAHER</b>	citizen member	<del>4th Cong. Distr.</del>	<del>1979</del>
John Millhone	Director	Energy Agency	—
<del>Wesley Ohman</del> <b>MULLIGAN</b>	citizen member	<del>at - large</del>	<del>1980</del>
Gwen Schwartz	citizen member	6th Cong. Distr.	1979
<del>Don Wetzel</del> <b>WALKER</b>	Commissioner	Agriculture	—

Administrator: Mary Sullivan

#### Function:

The Environmental Quality Council (EQC) has an overall objective to promote and insure cooperation and coordination among state agencies significantly affecting the environment. As needed, the EQC may initiate studies by interagency and/or citizen task forces on important issues. The EQC also reviews major actions, programs, and legislation to resolve conflicts and to insure agency compliance with

\*A citizens advisory committee for the council to assure citizen participation in the activities and decisions of the EQC has eleven members, appointed by the governor, one from each of the eight congressional districts and three at large. The appointments by the governor are made by and with the consent of the senate for four-year terms, but at the pleasure of the governor.

329



the Minnesota Environmental Policy Act and then provide comment to the governor, legislature, and appropriate state agencies.

The following activities are among those administered by this council: environmental impact statement process; power plant siting and transmission line routing; critical areas planning process; early notice system; Minnesota environmental education; environmental standards for subdivision of land.

### MINNESOTA ENVIRONMENTAL EDUCATION BOARD and REGIONAL ENVIRONMENTAL EDUCATION COUNCILS

257 Hennepin Square Building  
2021 E. Hennepin Ave.  
Minneapolis 55413  
(612) 378-7010; (612) 296-3368

**Law provides:** the state board consists of 26 members, 13 appointed at-large by the governor and one member elected by each of 13 regional councils. Regional councils, one in each of the state development regions, consist of 12 members each, appointed by the chairperson of the state board. (Minnesota Statutes 1974, Sec. 116E)

#### Officers and Members of the Executive Committee of the Minnesota Environmental Education Board:

Member:	Residence:	Office:	Term expires:
Leland H. Grim	International Falls	Chairperson	1978
Betty M. Johnson	Roseau	Vice Chairperson	1978
Thomas A. Powell	St. Paul	Secy. Treas.	1978
Dick Anderson	Fergus Falls		
Melvin Bates	Minneapolis		
Julia Copeland	Minneapolis		
Merill Fellger	Long Lake		
<b>Executive Director:</b>	Robert A. Kimball		
<b>Assistant Director:</b>	Karen L. Loechler		
<b>Regional Coordinators:</b>	Regions 1, 2, 4: Charles J. Gibilisco	Regions 6E, 6W, 8, 9: Pamela Landers	
	Regions 3, 5, 7W: John N. Satterlee	Regions 7E, 10, 11: Carmen L. Borgerding	

#### Function:

The board and councils are responsible for planning, implementing, and coordinating environmental education and information activities throughout the state through and with both formal educational institutions and community, business, industry, and labor organizations and local, state, and federal government units. The board is also responsible for advising the governor and legislature on matters related to environmental education.

### SOIL AND WATER CONSERVATION BOARD

Centennial Building, Third Floor  
St. Paul 55155  
(612) 296-3767

**Law provides:** The soil and water conservation board is an agency within the department of natural resources for the purpose of serving as the parent agency to the 92 soil and water conservation districts in the state. The board has eleven members: seven appointed by the governor; the heads of the Minnesota pollution control agency; department of agriculture, dairy and foods; university of Minnesota agricultural extension service; and the dean of the institute of agriculture, forestry and home economics. (Minnesota Statutes, Section 40.03)

Appointed members:	Residence:	Office:	Term expires:
Clarence L. Ettesvold	Morris	Chairman	1977
Herbert W. Bollum	Redwood Falls	Vice Chairman	1978
Thomas Schultz	Sebek		1981
Leonard Pikal	Brownston		1979
Arnold Onstad	Spring Grove		1980
Robert A. Falk	Tenstrike		1980
Armas Yuhala	Nashauk		1980

#### Ex-officio Member

Dr. William Hueg,  
Institute of Agriculture  
University of Minnesota  
Dr. Roland Abrahamson,  
University of Minnesota  
Jon Wefald, Commissioner  
Dairy and Food Service  
Sandra Gardebring  
Advisory Members  
Harry M. Major, State  
200 Federal Building  
Leroy Swenson, President  
Water Conservation  
John Chapuran, Assistant  
55 Sherburne Avenue

#### Executive Director

**Function:**  
All the land and  
The Soil and Water  
financial assistance  
under M.S. Chapter  
the control and  
ment; for the  
siltation and

#### SOUTHERN

Centennial  
St. Paul 55155  
(612) 296-3767

**Law provides:**  
within the  
which consist of  
counties located  
pointed for  
one member  
appointed  
is appointed  
chairman and  
(Minnesota)

**Appointed Members:**  
Chairman Arnold C.  
Representative Tom  
Representative Carl  
Kenneth Harstad,  
Robert Lebens, As  
John Ostrem, Has  
Administrative As

**Function:**  
The "basin" is  
tributaries to  
are tributaries  
River.

The board is  
creation and  
development  
governments  
prepare its o  
plan.



## LEAGUE OF WOMEN VOTERS OF MINNESOTA

555 WABASHA • ST. PAUL, MINNESOTA 55102 • TELEPHONE (612) 224-5445

March 15, 1978

### PROJECT PROPOSAL: ENERGY RESOURCE DIRECTORY FOR MINNESOTA

The League of Women Voters of Minnesota proposes to produce an Energy Resource Directory for Minnesota in cooperation with the Minnesota Energy Agency.

#### Definition

An Energy Resource Directory will be a compilation of existing energy-related services, programs and projects available in Minnesota. It will be designed to aid individuals and groups get specific energy-related information and services. In looseleaf format it would be part of the Energy Awareness Handbook for local governments in Minnesota designed by the Minnesota Energy Agency. The information in the Energy Resource Directory would also be made available to the public by distributing copies of the Directory to public libraries, vocational-technical energy resource centers, community colleges and key energy resource persons including League of Women Voters members trained as energy resource people at one of the training sessions offered jointly by the League of Women Voters of Minnesota and the Minnesota Energy Agency.

#### Objectives

The Energy Resource Directory will

- direct households to appropriate groups or agencies for energy-related assistance or information;
- provide easy access to existing energy resources for groups interested in promoting energy education activities and programs in their communities;
- make explicit to the public the specific services offered by existing energy-related projects and programs;
- provide a reference tool that can be easily updated;
- provide a tangible measure of existing energy efforts in Minnesota;
- provide the groundwork for evaluation of existing energy efforts in Minnesota and a base for long-term energy service planning for the state.

#### Program Description

Information about existing energy-related services, programs, and projects available in Minnesota will be gathered by mailed questionnaires and personal interviews. Information will be gathered not only from Minnesota-based groups, but also from national energy-related organizations that serve Minnesota. The emphasis of the Directory will be on services available to regional or larger-than-regional areas of the state. Of particular importance in the project will be the definition of services available through

PROJECT PROPOSAL: ENERGY RESOURCE DIRECTOR FOR MINNESOTA - 2

the Minnesota Energy Agency and other governmental bodies. The Directory will also include programs available in specific metropolitan areas of the state. In addition, the Directory will include descriptions of exemplary programs servicing small population centers as examples of what other communities can do.

The Directory will include the following information about each energy-related service, program, or project:

- . name of organization
- . address, phone, and contact person
- . description of existing and planned program(s), project(s), and/or service(s)
- . definition of clientele the program(s), project(s), and/or service(s) will serve.

Approximately 150 questionnaires will be mailed. All organizations not responding to the questionnaire will be contacted by phone.

Definition of Responsibilities

The Energy Resource Directory will be produced cooperatively by the League of Women Voters of Minnesota and the Minnesota Energy Agency.

The League of Women Voters of Minnesota will be responsible for

- . collecting information about existing and planned energy-related services, programs, and projects in Minnesota;
- . organizing the collected data and writing the Directory;
- . typing the Directory.

The Minnesota Energy Agency will be responsible for

- . printing the Directory;
- . mailing the Directory.

Timetable

March 1 - April 15	Gathering of information by questionnaire and interview
April 15 - May 1	Organization and writing of Directory
June 1	Completion of Directory

Project Budget for League of Women Voters Responsibilities

The following figures only cover the costs to the League of Women Voters of Minnesota for carrying out its responsibilities listed above. The costs to the Minnesota Energy Agency for printing and mailing the Directory are in addition to the \$1,550 budget listed below.

	<u>Project Budget</u>
Personnel	
Project Manager	\$ 500
Project Director	500
Supplies	
Postage	25
Materials	25
Copying	20
Secretarial Time	125
Travel and Telephone	110
Overhead and Fiscal Administration	245
	<u>\$1,550</u>



Energy Coordinator X  
Red Wing School Board  
525 E Avenue  
Red Wing 55066  
Minn



Hoodwood / Fine Lakes Concerned  
Citizens

C/O Edward G. Johnson  
Route 3 Box 71-E

Hoodwood 55736

476-2610

~~DeLuith Public Schools~~ X

Energy Coordinator  
DeLuith Public Schools  
Administration Bldg.  
15 East 2nd Street  
DeLuith  
Minn. 55802

Envir. Engineering Student Society

Nadim Spamat, Pres

103 Experimental Engineering  
Bldg

U of M

Mpls. 55455

373-5952

X  
All-Cooperating Assembly  
(ACA)

3104 16th Ave South  
(rec. by Carbin Ketter)

Mpls.

~~TRAM~~

~~227-5171~~

Minn. 55407

721-4925

Central Solar Energy Research

Institute  
1256 Trapp Road

Eagan 55121

Ronald E. Anderson, Dir

452-5300



Associated General  
Contractors of Minn. X

45 East 8th Street  
St Paul 55102

291-1102

American Underground Space  
Assoc.

Thomas C. Atcheson

Exec. Dir.

U of M Dept of Civil &  
Mineral Engineering

Mpls. 55455

376-55810

X  
Minnesota Building Code  
Division

Dept of Admin.

4th floor

Metro Square Building

7th + Robert Streets

St Paul 55101

Environmental Education Emphasis

Court House

Windom

56101

Mars For Peterson

831-1987

Donald Chamberlain

Box 46

Navarre, Minn

55392



Countryside Council

C/o Jeff Dorse

Southwest State College

Marshall, Mo. 64701

537-6291

The Renewable Energy and<sup>x</sup>  
Environment Library

114 Space Science Center

U of M

Mpls

Co: LEB

Coalition of Rural Environmental  
Group

Mr. Wendell Bradley

Box 1339

Gustavus Adolphus College

Sr. Petre 56082

Energy Marketplace

X

1967 Grand Ave

Suite 302

St Paul

55105

690-4902

American Water Resources Assoc.:  
St. Anthony Falls Hydraulic  
Laboratory  
Mississippi River at 3rd Ave  
Mpls. 55414 S.E.  
376-5050  
Mr. Dana C.  
Roads



\* Have we contacted the following organizations?

- Does MEA have a description of the programs being administered at the regional level e.g.
  - weatherization program
  - fuel bill assistance program
- Description of local Energy Conservation Awareness committees. How will they be handling the regional energy education activities. Will all regions operate in basically the same way as Western Community Action, Inc.?
- Winona, G, Tobin video tape - energy conservation (SEMCAAC, INC.)
- The American Underground Assoc.  
Local Chapter of the International Solar Energy Society (MSAIA)
- Lyjak Walton League? (Austin Comm College)
- Ottertail Power Co. (Fergus Falls Comm College)
- The Energy Shed  
Enerco Corporation  
Anderson Windows } Augsburg College
- ✓ Donald Chamberlin  
Box 46  
Navarre, Minn 55392 } Minn. Assoc. of School Administrators
- ✓ Minn. Environmental Sciences Foundation, Inc. } MEEB  
5400 Glenwood Ave.  
Mpls, 55422
- ✓ Minn. Building Code Division, St. Paul (Fergus Falls Comm College)  
Dept of Ad
- ✓ State Dept. of Vocational Education } Tec-Voc Institute  
L. G. Richter

Vo techs -

have St Paul only

~~XXXXXXXXXXXX~~

296-2421

Gerry Schmechel

Center for Community Action  
(CCA)

1501 - 4th St. So.

Mpls. 55454 338-8733

Lu Verne Dean Gunning

\* need to contact? (cont)

✓ Alternative Sources of Energy magazine (CLSR)

- NSP home energy audit program "Project Conserve"  
(Penny McCarran, DPS)
- American Red Cross } Dept. of Public Health
- ✓ The Renewable Energy and Environment Library  
114 Space Science Center, U2M } (R. Peterson,  
Ag. - Extension Energy Info. Source List)
- ✓ State vocational-technical schools are doing a  
large energy A-V series } B. Hunt, SEMCAC  
Energy Program

POTENTIAL WORKSHOPS

BUSINESSES, ORGANIZATIONS

X i/e Associates  
Tom Abeles  
3704 11th Ave. S.  
Mpls. Minn. 55407  
825-9451  
solar, bioconversion, conservation

Minn. Society Am. Inst. of Architects  
314 Clifton Ave.  
Mpls. Minn. 55403  
874-8771

Alternative Sources of Energy  
Don & Abbey Marrier  
Rt. 2, Box 90A  
Milaca, Minn. 56353  
983-6892  
wind, solar, methane, integrated studies

Community Design Center  
118 E. 26th St.  
Mpls. Minn. 55405  
827-2608  
home rehabilitation & maintenance

Clean Air - Clear Water  
Box 311  
So. St. Paul, Minn. 55075  
644-8684  
environmental issues

Energy Alternatives  
Dan & Donna Mae Flaherty  
9535 18th Ave. N.  
Plymouth, Minn. 55441  
544-6235

-Minn. Dairy Goat Assoc. Inc.  
P.O. Box 377  
Silver Lake, Minn. 56381

-Minn. Beekeepers Assoc.  
David Sundberg  
Rt. 3  
Fergus Falls, Minn. 56537

X Oasis 2000  
Jack Nadelhoffer  
Box 1, Administration Bldg.  
Rice Lake, Wisc. 54868  
715-234-8176



BUSINESSES, ORGANIZATIONS  
CONT.

Ceococh Mountain News  
Emily Osborn  
Box 544  
Richland Center, Wisc. 53581  
608-647-6007  
homesteading skills & crafts

Project for Pride in Living  
2516 Chicago Ave.  
Mpls. Minn.  
874-8511  
housing rehabilitation

Rutan Research  
Al Rutan  
12489 Norell Ave. N.  
Stillwater, Minn. 55082  
874-1306

Staples Energy Conservation Program  
Ray Gildow  
Chicago Ave. & 5th St. N.E.  
Staples, Minn.  
894-2430

Soil Assoc. of Minn. Inc.  
Elben Buck  
RR 2  
Marshall, Minn. 56258

X Twin Cities Lutheran Campus Ministry  
1101 University Ave. S.E.  
Mpls. Minn. 55414  
331-2747  
Verolyn Smith

+ Wright Alternative Energy Assoc.  
Luke Markve  
Box 39  
Waverly, Minn. 55390  
612-658-4415

Winona Chapter Northern Sun Alliance  
Evelyn Roehl  
114 $\frac{1}{2}$  East 2nd St.  
Winona, Minn. 55987  
507-452-1815  
anti-nuclear

Wolf Lake Refuge  
Rt. 3, Box 325  
McGregor, Minn. 55760  
218-426-3845

BUSINESSES, ORGANIZATIONS  
CONT.

+ Wesmin Resource Conservation & Dev. Project  
700 Cedar St.  
Alexandria, Minn. 56308  
763-4711

+ Grove Engineering  
Les Grove  
1714 Garvis Ave.  
N. St. Paul, Minn.  
methane production

+ Critteria *(architectural firm w/ engineers  
new office near Selby & Dale)  
have an exhibit at mpls. lib. Futures Exhibit*  
100 First Ave. N.  
Mpls. Minn. 55401  
338-4761

+ Big Outdoors People  
2201 N.E. Kennedy  
Mpls. Minn. 55413  
331-5430

+ Northern Solar Power Co.  
311 S. Elm  
Moorhead, Minn. 56560

Center for Local Self-Reliance  
3302 Chicago Ave. S.  
Mpls. Minn.  
824-6663

+ Mid-American Solar Energy Complex  
1256 Trapp Rd.  
Eagan, Minn. 55121  
Dr. D. E. Anderson  
452-5300

+ Northern Solar Power Co.  
311 S. Elm St.  
Moorhead, Minn. 56560  
Bruce or David Hilde  
218-233-2515

+ West Bank CDC, Inc.  
2000 South fifth St.  
Mpls. Minn. 55454  
Ralph Wittcoff  
376-1092

BUSINESSES, ORGANIZATIONS  
CONT.

The Herbal Forest  
Rt. 3, Box 92  
River Falls, Wisc. 54022  
Anne Kerfoot  
715-386-3246

Hazel Hills  
Rt. 1, Box 277  
River Falls, Wisc.  
Judith Hanles

Life Concepts Health Centre  
129 Wilson Ave. Southeast  
St. Cloud, Minn. 56301  
252-7423

Little Bear Trading Co. (food)  
Rt. 1, Box 266A  
Cochrane, Wisc. 54622  
Jennifer Schwartz

## POTENTIAL WORKSHOPS

### EDUCATORS: MINNESOTA

Tom Bligh  
American Underground - Space Assoc.  
Dept. of Civil & Mineral Engineering  
U of Minnesota  
Minneapolis, Minn.  
underground construction

+ Philip R. Goodrich  
305 Agricultural Engineering  
U of Minnesota  
St. Paul, Minn. 55108  
373-8764  
animal waste into energy

Dr. Kenneth Jordan  
309 Ag. Eng. Bldg.  
1390 Eckles Ave.  
St. Paul, Minn. 55108  
373-1327  
agricultural engineering

+ Dr. Irving Larson  
Bemidji State University  
Bemidji, Minn. 56601  
218-755-2759  
solar

Fred W. Peterson  
U of Minnesota, Morris  
Morris, Minn. 56267  
612-589-2211  
architectural land use

+ Dr. Charles Reinert  
Dept. of Physics  
Southwest State University  
Marshall, Minn. 56258  
507-537-6175  
solar, wind

+ Irving Strom  
Industrial Technology  
Bemidji State University  
Bemidji, Minn. 56601  
755-2760  
solar, wind, energy conservation

+ Jim Wylie  
Specialty Crops Program  
Area Voc-Tech Institute  
Detroit Lakes, Minn. 56501  
218-847-3129  
organic growing, methane gas



POTENTIAL WORKSHOPS

EDUCATORS: MINNESOTA  
CONT.

+ Dr. J. Edward Anderson,  
Dept. of Mech. Engineering  
U of Minnesota  
Mpls. Minn.  
612-373-5548  
housing, self-sufficiency, personal rapid transit

+ Scott Creeger  
Watertown, Minn.  
955-1934  
enviornmental education



POTENTIAL WORKSHOPS

CAP AGENCIES: MINNESOTA

Tri-County Community Action Program  
404 2nd Ave. N.E.  
Little Falls, Minn. 56345  
Mary Brendmoen  
612-632-3691

South Central CAP  
Box 207  
Jackson, Minn.  
507-847-2632

Arrowhead Economic Opportunity Agency  
Box 1066  
Virginia, Minn. 55792  
Karen Skorich  
218-749-2912

West Central Minn. Community Action, Inc.  
Box 3026  
Elbow Lake, Minn. 56531  
Joyce Resch  
218-685-4486

Western Community Action, Inc.  
P.O. Box 246  
Marshall, Minn. 56258  
D.H. Stapf  
507-532-2504

Bi-County Community Action  
209 $\frac{1}{2}$  Third St.  
Bemidji, Minn. 56601  
Michael Rak

Semcac, Inc.  
Box 549  
Rushford, Minn. 55971  
507-864-7741

POTENTIAL WORKSHOPS

CAP AGENCIES: NORTH DAKOTA, SOUTH DAKOTA

West CAP  
525 Second St.  
Glenwood City, Wisc.  
Jim Bacon  
715-265-7001

Concerned Low Income People  
Box 1836  
Minot, North Dakota 58701  
Dennis Balyeat  
701-852-5085

Quad-County Community Action Agency  
27 1/2 So. 3rd St.  
Grand Forks, North Dakota 58201  
Joe Murphy  
701-746-5432

Community Action Region VI  
701 3rd Ave. S.E.  
Jamestown, North Dakota 58401  
Steve Sebelius  
701-252-1821

South Central Community Action Program  
P.O. Box 6  
Lake Andes, South Dakota 57356  
Don Slaba  
605-487-7634

Southeast N.D. Community Action Agency  
670 4th Ave. N.  
Fargo, North Dakota 58102

Sendcaa  
Box 2871  
670 Fourth Ave. N.  
Fargo, N.D. 58102  
701-232-2452

POTENTIAL WORKSHOPS

CONCERNED INDIVIDUALS

X David Aslesen  
823 West Anderson St.  
Stillwater Minn. 55082  
439-7857  
forester, conservation

Carlotta Colette  
2700 17th Ave. S.  
Mpls. Minn. 55407  
824-6663  
organic gardening, hydroponics

Lowell R. Dittberner  
RR #1, Box 43  
Parkers Prairie, Minn. 56361  
218-338-2212  
organic gardening, self-sufficiency

Mr. Carmen Fernholz  
RR #2, Box 9A  
Madison, Minn. 56256  
612-598-3010  
organic farming

X Dennis Jacobs  
Box 165  
Rochert, Minn. 56578  
847-7971  
wind energy

Mary Jane Heinen  
1400 Fairfield Rd. S.  
Mtka. Minn. 55343  
544-9587  
architect

Patsy & Nick Noda  
RR #1  
Rice, Minn. 56367  
612-393-2620  
organic farming

X Rodney Hanson  
6325 Baldwin Lake Rd.  
St. Paul, Minn.  
solar, wind energy

X Darryl Thayer  
2406 Doswell  
St. Paul, Minn. 55108  
weatherization, solar

POTENTIAL WORKSHOPS

CONCERNED INDIVIDUALS  
CONT.

Karen Wilson  
1837 Laurel  
St. Paul, Minn  
647-0667  
greenhouse gardening,

X John Weber  
Rt. 1  
Long Prairie, Minn  
energy efficient construction

X Darrell Bacon  
Moving the Earth  
RR #1  
Burtrum, Minn. 56318  
612-285-5573  
underground construction, wood, solar

X Bruce Clark  
635 Lincoln Ave.  
St. Paul, Minn.  
225-5642 house rehab, self-sufficiency

Ina Haugen  
2633 2nd Ave. S.  
Mpls. Minn. 55408  
870-1913  
attic greenhouse



# Energy and Water

John Harte and Mohamed El-Gasseir

Providing energy for human use consumes water and providing water consumes energy. We discuss here only the consumption of water for energy. Our

leum. Because many end uses, especially transportation and home heating, rely today on these two fuels, it appears that only three paths are available. One

ter withdrawn is water taken from a water supply but not necessarily consumed. Water consumed is water rendered unavailable for specified further uses. The water consumption of a given activity depends on the ways water is used in the activity and the ways it is needed by downstream users, including the spatial distributions and time schedules of all such uses (*1*).

Thus, heavily polluted water that is discharged from a coal gasification plant is consumed water for many competing uses, although not, perhaps, for mine floor wetting. Water evaporated from a wet cooling tower or an artificial lake, or from surface mined land under reclamation,





## **Partially Scanned Material**

The remainder of this page/item has not been digitized due to copyright considerations. The original can be viewed at the Minnesota Historical Society's Gale Family Library in Saint Paul, Minnesota. For more information, visit [www.mnhs.org/library/](http://www.mnhs.org/library/).

# ENERGY 20

## FORECASTING ENERGY DEMAND: ELECTRICITY DEMAND AS A CASE IN POINT IN SHORT

Forecasts of future energy demand have been used for decades as tools for planning and evaluating energy development programs. Lead times of from five to ten years are frequently required to find and to develop new supplies of traditional fuels or to build energy processing facilities or power plants. Decisions made now about developing energy sources will affect the amount and kinds of energy available years hence. But a forecast is not a prediction or a prophecy; at best it is an estimate of what future energy demand will be if certain conditions obtain.

### BACKGROUND

The hazards of projecting energy demand are nowhere more evident than in recent debates over proposed expansions of electric generation capacity. Between 1961 and 1971 demand for electricity doubled. In the early 1970s providers of electricity planned to double generating capacity again by 1980. Because fuel is a major input in generating electricity, the increases in the costs of oil and other fuels that followed in the wake of the 1973-74 oil embargo resulted in higher electric rates in many parts of the country. These increased electric rates, together with conservation efforts and the recession, cut the demand for electricity. The drop in demand, plus the high cost of capital and uncertainties about government requirements for construction related to air and water quality, led many electric utilities to delay constructing new plants.

Now critics of various stripes are challenging previously planned expansion of generating capacity as excessive. Some groups point to the recent drop in demand, which they interpret as price motivated, as evidence that many of the new plants on the drawing board will not be needed. Certain groups even contend that if conservation were encouraged, few new plants would be needed. Environmentalists argue that new construction would entail needless environmental costs. Many economists argue that the necessary capital cannot be raised without detracting from other important projects. Utilities, attempting to boost their profits in order to attract the capital investment needed to finance the planned new construction, have sought rate increases from the regulatory commissions. These moves have evoked opposition from consumer groups who claim that consumers are being asked to pay for expansion they believe is neither needed nor wanted. But as the nation pulls out of the recession, providers of electricity expect that demand for electricity will resume growing at its pre-1970 rate. Electric utilities point out that the long lead times involved in increasing generating capacity make it disastrous to underestimate future demand. They emphasize that future shortages could mean higher prices or rationing; shortages might also affect economic growth or employment.

The arguments on both sides of the debate give cause for concern: most of us would prefer to steer a course between the costs of an excessive electricity supply and the costs of an insufficient one. The question then arises: "How accurately can future energy demand be estimated?"

### DEMAND FORECASTING TECHNIQUES

Two techniques for forecasting future energy demand are currently in wide use: (1) extrapolation of past trends and (2) econometric modeling.

#### EXTRAPOLATING PAST TRENDS

Until the early 1970s most popular forecasts of energy use were extrapolations of past trends. Energy trend forecasts can be done for the country as a whole, or a national forecast can be aggregated from forecasts of energy use in the states, in geographic regions, or in sectors of the economy. This kind of forecasting assumes that energy use will grow at a specified rate, usually at the same rate as in the preceding 10 to 15 years. Sometimes the rate of growth may be modified in a best-guess attempt to take account of economic, technological, demographic, political, or social changes that the forecaster thinks might influence energy consumption. Generally trend forecasts take only a few variables into account and in a very simplistic way. But no matter how many factors are considered, extrapolating, as a way of estimating future demand, oversimplifies the dynamics of energy use by assuming that all factors (such as population, technology, size of GNP, or the prices of fuels and electricity) that affect the demand for energy will continue to relate to each other as they have in the past.

Trend forecasts done in the '50s and '60s for the '60s and early '70s proved to be fairly accurate. But their accuracy was attributable to the slow and more or less uniform rate at which factors affecting energy demand changed during that period. These stable conditions no longer exist. Recently the prices of fuels and capital have increased dramatically; much uncertainty exists about future energy supplies and the impact that conservation and higher prices will make on energy demand. In this climate, estimates of future energy demand based on extrapolations of past trends are open to serious question.

#### FORECASTING WITH ECONOMETRIC MODELS

Unlike trend analysis, econometric techniques isolate and examine the factors that cause energy demand to increase or to decline. In addition, econometric models provide a way of estimating the effects that these factors and the variable being forecast will have on each other. Using a variety of data, the econometrician tries to develop quantitative, mathematical expressions that accurately describe the historical relationship between energy demand and other variables. Assumptions about the ways in which the variables relate to each other are explicitly stated in an econometric model. If econometric models are used in conjunction with computers, complex relationships among many variables can be taken into account. Nevertheless, to be of value, even the most sophisticated econometric projection must be derived from high-quality data. Poor data is often a major impediment to accurate demand forecasting.

#### GETTING THE MAXIMUM USE OUT OF FORECASTING

To return to our example, much of the debate over the expansion of electric generating capacity has centered on different estimates of what future demand will be. In many cases, in the course of these debates, the public has not been provided with sets of assumptions about other variables related to energy use that are explicit or implicit in demand forecasts. Energy demand is but one aspect of the future. It affects and is affected by other factors that determine the quality of our lives. To plan our futures solely by preparing to meet a projected level of energy demand without knowledgeably examining the factors contributing to or affected by that level of demand could entail high risks. One advantage of econometric forecasting is that it provides a means for examining growth of energy demand in relation to a host of other factors. Because many of these factors, such as energy prices or environmental controls, can be influenced by public policy, econometric models--unlike trend projections--can be a useful tool to estimate the effects of policy options on a variety of important variables, one of which is energy demand. Moreover, if adequate data are available, econometric analysis permits the development of multiple scenarios of future energy demand.

The city of Seattle, Washington has used econometric forecasting models to estimate future demand for electricity and the effects that various ways of satisfying that demand might have on the quality of life in Seattle. Recently Seattle City Light [SCL]--which is municipally owned--had an opportunity to participate in the construction of two nuclear power plants. At public hearings on the issue, citizens raised a number of questions about the growth of Seattle's demand for electricity. In response to the public's questions and concerns, SCL hired outside consultants to study Seattle's future demand for energy as well as "load forecasting methodologies; rate policies; options for meeting future demand; and the social, economic, and environmental impact of the various options available." At SCL's suggestion, the city formed a citizens' committee to select the consultants and to oversee the study.

The Seattle study, published as Energy 1990, discusses SCL's trend forecast as well as a set of six econometric forecasts, each based on a different group of assumptions. These are used in conjunction with seven scenarios to examine the effects of various assumptions about rate structures, efficiency of electricity use, and kinds of generating facilities utilized (which affect the size and cost of available energy supply) on economic activity, employment, population, air and water quality, noise levels, land use, and relative uses of a variety of forms of energy. The study was submitted to the public, which, through hearings and the Citizens Overview Committee, made recommendations to the city council. In Seattle's debate over the growth of demand for electricity, unlike that in many other parts of the country, SCL, the Seattle City Council, and involved citizens have put to work, in a highly constructive way, the forecasting tools available to them. Rather than argue about the relative merits of conflicting projections of electricity demand, they used econometric models to look at a variety of energy futures for their city. In so doing they have found a useful way to enable citizens to better understand the alternatives and to make choices, then plan for an energy supply that will meet the needs of a city with the environment, economy, and patterns of living to which they aspire.

Trending and econometric forecasts have also been used to estimate future demand for oil, coal, solar energy, natural gas and other energy resources. Whatever the energy resource, the value of demand forecasts as planning tools will be multiplied many times if they are used in conjunction with a number of possible scenarios that relate energy demand to factors such as the health of the economy and environmental quality, both in the area where the energy will be used and in the area where it is produced.

#### FYI

Energy 1990: Initial Report, Vol. I, Summary and Overview. Available from Office of Environmental Affairs, Seattle City Light, 1015 Third Avenue, Seattle, WA 98104. Cost \$4.00 (checks should be payable to the Seattle City Treasurer.) A fine example of the use of econometric techniques in assessing a city's future energy needs and of citizen involvement in that process.

"Models: Finding Alternative Futures," chapter 4 of Resources and Decisions by the Leonardo Scholars, University of Wisconsin. North Scituate, Massachusetts: Duxbury Press, 1974.



Verna Higson #  
258 Juniper  
Mahomet 55115

Lynn Eckman  
Regional Cooperative Service Units Mpls.

1 hour { Beverly Arnoldy 722-2939  
Mary Petzling 331-9054

Angburg

January 12

NW Bancorizon  
display

before 10:AM (Reety)

Ann Riite

Mpls:

922-3227

Mpls, Home Economics

Sunday Carol Jackson:  
State Board member

920-4915

Call Judy McGuire

List of AVTI's

Minneapolis  
Consumer services

on energy

# send report to LHV

Red Wing Vo Tech Red Wing 55066

Energy Discovery Group

Minnesota Appropriate Technology

Suzanne Maeder 378-2566

MINNESOTA COMMUNITY COLLEGE SYSTEM  
OFFICE OF THE CHANCELLOR

301 Capitol Square Building, 550 Cedar Street  
St. Paul, Minnesota 55101  
Robert E. Bergstrom, Associate Vice Chancellor for  
Occupational Programs and Community Service

CAMPUS REPRESENTATIVES DESIGNATED RESPONSIBLE FOR COMMUNITY SERVICES

ANOKA-RAMSEY COMMUNITY COLLEGE  
11200 Mississippi Boulevard  
Coon Rapids, MN 55433  
John Kotlark, Dean of  
Community Services  
Phone: (612) 427-2600

AUSTIN COMMUNITY COLLEGE  
1600 S.W. Eighth Street  
Austin, MN 55912  
James Flannery, Dean of  
Instruction 129-32

BRAINERD COMMUNITY COLLEGE  
College Drive at S.W. Fourth Street  
Brainerd, MN 56401  
John Langerud, Administrative Assistant  
111-2512

FERGUS FALLS COMMUNITY COLLEGE  
Fergus Falls, MN 56537  
Dan True, Director of  
Occupational Programs and  
Community Service 108-7-261

HIBBING COMMUNITY COLLEGE  
Hibbing, MN 55746  
Jennis Bapst, President  
115-38

INVER HILLS COMMUNITY COLLEGE  
8445 College Trail  
Inver Grove Heights, MN 55075  
Philip Anderson, Dean of  
Continuing Education 455-9621

ITASCA COMMUNITY COLLEGE  
Grand Rapids, MN 55744  
Leo Keskinen, Dean of  
Instruction 117-205

LAKEWOOD COMMUNITY COLLEGE  
3401 Century Avenue  
White Bear Lake, MN 55110  
770-1331

MRSABI COMMUNITY COLLEGE  
Virginia, MN 55792  
Archie Hill, Administrative  
Assistant 116-61

METROPOLITAN COMMUNITY COLLEGE  
1419 Harmon Place  
Minneapolis, MN 55403  
James Field, Director of  
Community Services 341-7023

NORMANDALE COMMUNITY COLLEGE  
9700 France Ave. South  
Bloomington, MN 55431  
Arland Otte, Dean of  
Instruction 831-5001

NORTH HENNEPIN COMMUNITY COLLEGE  
7411 85th Avenue North  
Brooklyn Park, MN 55445  
Don McGuire, Director of  
Community Services 425-4541

NORTHLAND COMMUNITY COLLEGE  
Thief River Falls, MN 56701  
Willard Kottke, Dean of Instruction  
& Director of Community Services  
108-1-54

RAINY RIVER COMMUNITY COLLEGE  
International Falls, MN 56649  
Ralph Anderson, Dean of Instruction  
115-48

ROCHESTER COMMUNITY COLLEGE  
Highway 14 East  
Rochester, MN 55901  
Cortlandt Frye, Dean of Continuing  
Education & Community Services  
103-7219

VERMILION COMMUNITY COLLEGE  
Ely, MN 55731  
Raymond Kenney, Dean of Instruction  
& Director of Community Services  
(218) 365-3256



WILLMAR COMMUNITY COLLEGE  
Willmar, MN 56201  
Bert Phillips, Director of  
Community Services  
106-331

WORTHINGTON COMMUNITY COLLEGE  
Worthington, MN 56187  
David Landsburg, Dean of  
Instruction 173-22

Scotty Getty

373-5170

1-1-0

Before 11:30

423-3701

✓ Automobile Club of Ariz  
Main Comm College B

✓ Shell Oil  
Campfire  
✓ Pima County Community Action  
✓ SEMCAC

Judy Burke  
Myron Chase

Main Bankers Ass  
Ariz Comm Act

✓ Build Manager - St. Paul

many Leagues do, in fact, allow associate members voting privileges. The bylaw change would simply regularize what is being done.

The second proposed change would create a new category of membership, which we have termed the contributing member.

Art. III, Sec. 2

- c. Contributing members shall be members who join the LWVUS and who are not enrolled in any local League. Such members shall pay annual dues to the national Treasurer. The national Treasurer shall send the name, address, and one-half of dues collected to the state League recognized in the contributing member's state of residence.

Art. XIV, Sec. 2

Contributing members shall pay annual dues to LWVUS in amount to be determined by the Board.

As you know, at the present time anyone interested in League membership must first find out if there is a local League in their area and then find some means of making contact. In some cases, it can be a discouraging process.

This bylaw, if adopted, would make possible a national membership campaign similar to that used so successfully by Common Cause. It does not replace the member-at-large category, which is restricted to those who live outside the recognized local League. It would make it possible to simply join the League of

Women Voters no matter where you lived.  
555 WABASH AVE. ST. PAUL, MINN. 55102. TEL. 612-224-5445

It is believed this would be an effective means of including in our membership those who support League principles and would value an association, but who either do not wish to be involved with a particular local League or do not have time to participate personally. We know there are local Leagues who view inactive members as a drain on their resources and avoid recruiting those who might be in this category.

(Over)

- Future Farmers of America
- Future Homemakers of America
- ✓ Minnesota Library Association
- ✓ American Legion
- Minnesota Association of Counties
- Minnesota League of Municipalities
- Minnesota Retail Federation
- ✓ Chamber of Commerce
- St. Paul
- ✓ Minnesota Environmental Education Board
- Senior Federation
- ✓ Minnesota Apartment Association
- ✓ State Vo-Tech
- ✓ Community Education - State
- Utilities
- Extension, 4-H, Ag + Home
- ✓ State Soil & Water Conservation Service
- ✓ M P I R G
- ✓ Am Red Cross
- Emergency Service - Civil Defense

Wanda  
266 Mc Neal  
55108

Mr. Harold Cloud  
228 A Ag. Engineer  
408 Main  
St. Paul 55108

our Senior Citizens Club  
224-5531

State 4-H Office  
Leonard Harkness Program Director  
475 Coffee Hall  
St Paul 55108

373-1083

Camp Fire Girl

Mein



EXECUTIVE COMMITTEE  
MINNESOTA ENVIRONMENTAL EDUCATION BOARD

APR 7 1978

Membership list  
1978

Chairman

Betty Johnson, Teacher, North Star Vocational Center.  
Rt. 1, Box 41, Roseau, MN 56751  
218-463-1471 (office) 218-463-2181 (home)

Vice Chairman

Kent Hinshaw, K-12 Education Rep.; Science Consultant, St. Paul  
Public Schools  
St. Paul Public School Administration  
360 Colborne Ave., St. Paul, MN 55101  
612-298-5499 (office) 612-225-2315 (home)

Secretary-Treasurer

Merill C. Fellger, Director of Curriculum, K-12  
District 887 (Buffalo) Public Schools  
287 Glenmoor Lane, (home Address)  
Long Lake, MN 55356  
612-682-2397 (office) 612-473-8135 (home)

Members-at-large

Paul Walker, Acting Director, Division of Pediatric Denistry, U of M.  
2426 Galtier  
Roseville, MN 55113  
612-376-4095 (office) 612-483-4394 (home)

Jean Replinger, Associate Professor, Southwest Minnesota State University  
300 North Hill, Marshall MN 56258  
507-537-7197 (office) 507-532-5097 (home)

Byron Snowden, Mobil Oil Corporation  
Route 2, Box 131  
Grand Rapids, MN 55714  
218-326-3805 (home)

Donald Darling, Associate Professor, Mankato State University  
1032 Marie Court, North Mankato, MN 56001  
507-389-1912 (office) 507-625-6150 (home)

At-large Members to MEEB

Robert C. Baker, Associate Professor, Biology Department, Bemidji State Univ.  
Bemidji, MN 56601  
218-755-2921 (office) 218-751-3175 (home)

Virginia Berg, Teacher  
2305 Western Ave. North  
Roseville, MN 55113  
612-484-2757 (home)

Julia Copeland, Librarian, Environmental Conservation Library  
300 Nicollet Mall  
Minneapolis, MN 55401  
612-372-6637 (office) 612-378-9429 (home)

Merill C. Fellger, Director of Curriculum, K-12  
District 877 (Buffalo) Public Schools  
287 Glenmoor Lane, (home address)  
Long Lake, MN 55356  
612-682-2397 (office) 612-473-8135 (home)

Thomas A. Powell, Extension Specialist, 4-H and Youth Development  
475 Coffey Hall, University of Minnesota  
St. Paul, MN 55108  
612-373-0849 (office) 612-483-1344 (home)

Jean Replinger, Associate Professor, Southwest Minnesota State University  
300 North Hill, Marshall MN 56258  
507-537-7197 (office) 507-532-5097 (home)

Paul Walker, Acting Director, Division of Pediatric Dentistry, Univ. of MN.  
2426 Galtier  
Roseville, MN 55113  
612-376-4095 (office) 612-483-4394 (home)

## REGIONAL REPRESENTATIVES TO MEEB

### Region 1 (Agassiz)

Betty M. Johnson, Teacher, North Star Vocational Center  
Rt. 1 Box 41, Roseau, MN 56751  
218-463-1471 (office) 218-463-2181 (home)

### Region 2 (Headwaters)

Bill Sliney, Ag. Extension Agent, Bemidji State University  
220 Birch Hall  
Bemidji State University, 56601

### Region 3 (Arrowhead)

Byron Snowden, Marketing Engineer - Mobil Oil Corporation  
Rt. 2, Box 131, Grand Rapids, MN 55714  
218-326-3805

### Region 4 (West Central)

Dick Anderson, President, Home Construction Company  
316 North Oak, Fergus Falls, MN 56537  
218-736-7327

### Region 5 (Crow Wing)

Joanne Franke, director, Deep-Portage Conservation Reserve  
Cass County Court House  
Walker, MN 56484

### Region 6E (Prairie-woods)

Gary Russell, K-12 Education, New London-Spicer Schools  
303 East Oak, Olivia, MN 56277  
612-523-2747 (office) 612-354-293 (home)

### Region 6W (Prairieland)

Julie Emery, Waitress, Brookside Manor  
R.R. #5, Box 141, Montevideo, MN 56265  
612-269-6538 (office) 612-269-9694 (home)

### Region 7E (Wild Rivers)

Twyla Ring, Volunteer  
Rt. 1, North Branch, MN 55056  
612-674-7817

### Region 7W (Heartland)

Jim Paul,  
1830 Kilian Blvd, St. Cloud, MN 56301  
612-255-3288 (office) 612-253-7090 (home)

### Region 8 (Southwestern)

Jody Halgren, Volunteer  
104 James, Marshall, MN 56258  
507-537-6840 (office) 507-532-3407 (home)

### Region 9 (Pioneerland)

Donald Darling, Associate Professor, Mankato State University  
1032 Marie Court, North Mankato, MN 56001  
507-389-1912 (office) 507-625-6150 (home)

Region 10 (Southeastern)

Chuck Carpenter, Teacher, Albert Lea Schools  
1209 Columbus, Albert Lea, MN 56007  
507-373-1040 (office) 507-373-4339 (home)

Region 11 (Metropolitan)

Kent Hinshaw, K-12 Education Rep.; Science Consultant, St. Paul Public Schools  
St. Paul Public School Administration Bldg.  
360 Colborne Ave., St. Paul, MN 55101  
612-298-5499 (office) 612-225-2315 (home)

EX-OFFICIO MEMBERS TO MEEB

John Miller, Environmental Education Consultant,  
Minnesota State Department of Education  
644 Capitol Square Building, St. Paul, MN 55101  
612-296-4069 (office)

Roger Grosslein, Environmental Education Consultant,  
Minnesota Department of Natural Resources  
Centennial Building, 658 Cedar St., St. Paul, MN 55155  
612-296-3336 (office)

Joe Sizer, Director Environmental Planning Division  
Capitol Square Building, Rm. 101  
550 Cedar Street, St. Paul, MN 55101  
612-296-3985 (office)

Tom Gahm, Information Specialist  
Soil Conservation Service  
316 North Robert Street, St. Paul, MN 55101  
612-725-7673 (office)

Gail Gendler, Minnesota Pollution Control Agency  
1935 West County Rd. B2, Roseville, MN 55113  
612-296-7284 (office)

Geneva Harper, Staff  
Minnesota Energy Agency  
740 American Center Building  
160 East Kellogg Boulevard, St. Paul, MN 55101  
612-296-8492 (office)



## REGIONAL COUNCIL CHAIRPERSONS

### Region

- |    |   |
|----|---|
| 1  | Norma Hanson, R.R. 3, Goodridge, MN 56725<br>(218) 378-3137   |
| 2  | Don Schlattman, Box 51, Park Rapids, MN 56470<br>(218) 732-3333 (218) 732-4167                      |
| 3  | Barbara Bergstedt, 9867 North Shore Dr., Duluth, MN 55804<br>(218) 727-6692 Ext. 534 (218) 525-6119 |
| 4  | Dick Anderson, 316 No. Oak, Fergus Falls, MN 56537<br>(218) 736-7327 (218) 736-7984                 |
| 5  | Larry Shaw, 615 Oak St., Brainerd, MN 56401<br>(218) 828-2492                                       |
| 6E | Ronald Erpelding, 701 S.W. 4th St., Willmar, MN 56201<br>(612) 235-5114 (612) 235-0788              |
| 6W | Julie Emery, R.R. #5, Box 141, Montevideo, MN 56265<br>(612) 269-9694                               |
| 7E | Kathy Scoggin, 2841 Irving Ave., So., Mpls, MN 55408<br>(612) 822-6048                              |
| 7W | Jeffrey Latzka, 311 23rd Ave. No., St. Cloud, MN 56301<br>(612) 252-2733 (612) 251-5211             |
| 8  | Al Langseth, R.R. #2, Worthington, MN 56187<br>(507) 629-4223 (507) 629-4213                        |
| 9  | Margie Wallace, Rt. #1, Delevan, MN 56023<br>(612) 546-3527 (612) 546-3343                          |
| 10 | Marlene Johnsrud, 714 St. Thomas, Albert Lea, MN 56007<br>(507) 373-2384 (507) 373-0807             |
| 11 | Curtis G. Johnson, 5035 Second Ave., South, Mpls, MN 55419<br>(612) 522-4417 (612) 822-8428         |

Note: When two phone numbers are listed, the first is the business number, the second the home number. All addresses listed have been specified by council members as preferred mailing addresses.



STATE AND REGIONAL ENVIRONMENTAL EDUCATION STAFF

Minnesota Environmental Education Board  
Suite 257 Hennepin Square Building  
2021 E. Hennepin Ave.  
Minneapolis, Minnesota 55413

(612) 378-7010 (612) 296-2368 (office)

Karen Loechler - Executive Director 533-4161 (home)  
Evelyn Rosenow - Secretary 522-5926 (home)



Staff Area I - Southwest - regions 6E, 7W, 8

✓ Pamela Landers  
home: 603 South 10th St., Olivia, MN 56277  
(612) 523-1373  
office: Renville County Courthouse - Olivia, MN 56277  
(612) 523-1870 (612) 523-1871

*Sent to AES  
4/7/8*

Staff Area II - Northwest - regions 1, 4, 6W

✓ Dennis Jacobs  
home: Box 165, Rochert, MN 56578  
(218) 847-7971  
office: 116 E. Front Street, Detroit Lakes, MN 56501  
(218) 847-2163

Staff Area III - Northeast - regions 2, 3, 5

✓ Howard Teague  
home: 814 10th St., Bemidji, MN 56601  
(218) 751-6393  
office: 226 Sanford Hall, Box 95, Bemidji State University  
Bemidji, MN 56601  
(218) 755-2732 Tie line 110-2732

Staff Area IV - Southeast - regions 7E, 9, 10

✓ Carmen Borgerding  
home: 3640 Flag Ave., No., Mpls, MN 55427  
(612) 544-1687  
office: 257 Hennepin Square Building, Mpls, MN 55413  
(612) 296-2368 or (612) 378-7010

Staff Area V - Metro - region 11

✓ Robert Bystrom  
home: Route 2, Box 27A, Zimmerman, MN 55398  
(612) 441-1879  
office: 257 Hennepin Square Building, Mpls, MN 55413  
(612) 296-2368 or (612) 378-7010

✓ get annotations to Letzger  
① film discussion guide &  
Politics to Dentering  
Virginia

② letter & packets to  
non-workshop

✓ ③ film to Letzger

✓ ④ film letter to next people

film discuss to Virgin & jobbies  
Urban Coalition of Mpls.

Heunepia City CETH

Governor's Aesthetic Board

UMD MPRG

Senior Coalition 206 N. 4th St.  
Duluth

Jerry Schroeck, Don Bobber  
Energy Fiscalist  
City Hall, Minn.

get directory  
consumers - tent

Virginia, (Higgins)

Breckenridge, (Ekner)

Burrows - and (Dentering)

✓ Governor's Manpower umbrella  
for CAPS. Get CAP's from  
them. Brochure, Bev-Gleason

Fuel coordinators

Energy Alliance & other national  
organizations.

State wide emergency <sup>th</sup> 612-296-  
Roger Frank 2233

Division of Emergency Services  
| call energy suppliers  
| same as civil defense

Minnesota Environmental Science Foundation,  
Inc 5400 Glenwood Ave. Minneapolis  
55422

American Underground Association  
U of M Dept of Civil + Mineral Engineering  
Local Chapter of the International Solar  
Energy Society (Peter Pfister, Arch  
Alliance)  
~~The American Institute of~~

Clean Air Clean Water

Americans for Energy Independence

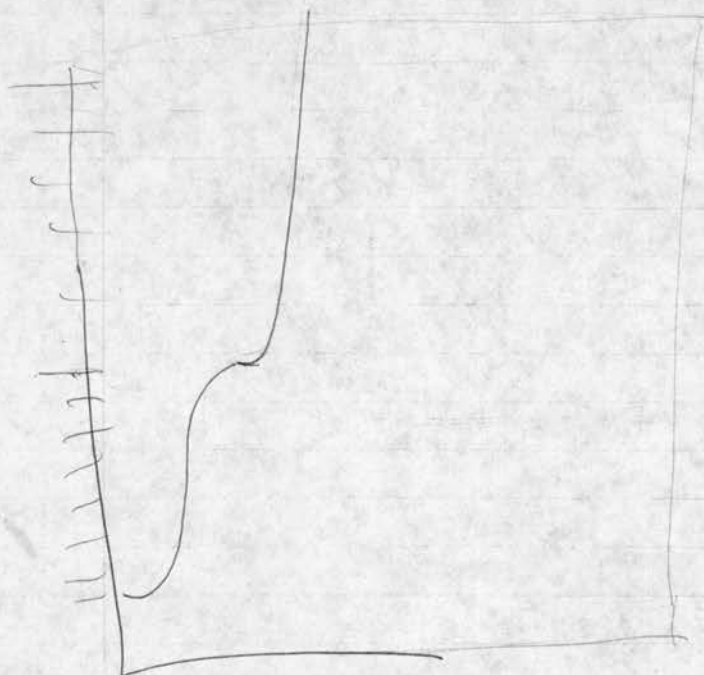
L-15 Minn Solar Resource Contact  
CETA

Camp Fire  
Consulting Engineers Council of Minn

Technical assistance  
Minn Retail Federation  
Countyside Council  
Ranchy Action Programs

Northwestern Bancorporation







THE AMERICAN LEGION ENERGY FORUM  
DEPARTMENT OF MINNESOTA

\*\*\*\*\*

THUNDERBIRD MOTEL  
2201 East 78th Street  
Bloomington, Minnesota  
Friday, February 3, 1978  
at 1:30 PM

A G E N D A

- I. Call to Order and Welcome Edward Cohn, Department Commander  
Introduction: Wayne Schnirring, Department Chairman  
Conservation Committee, American Legion  
Edward W. Mackins, Assistant Director,  
Internal Affairs Commission, American Legion  
James Whitfield, Executive Director,  
American Legion
- II. Purpose of Forum: The Honorable Daniel F. Foley, Moderator,  
Past National Commander
- A) Goal: Establish common goals acceptable to the major  
perspectives in order to resolve national and  
regional energy/environmental issues.
- B) Objective: Develop program format to facilitate the  
identification and discussion of energy and  
related environmental problems.
- C) Objective: Establish dialogue among business/industry,  
environmentalists and consumers.
- D) Objective: Identify the impacts on business and industry of  
major energy and environmental issues.
- III. Self-Introduction of Participants
- IV. 2:00 PM-Short Slide Presentation - Dimensions of Energy Problems:  
Jan E. Marfyak, U.S. Department of Energy,  
Washington, D.C.
- V. 2:20 PM-Informal statements of participants' major concerns toward energy  
and/or environmental issues.
- 3:00 PM-BREAK
- VI. 3:15 PM-Reconvene - Discussion of topics previously listed as major concerns  
of participants (3 basic issues)
- a) How each impacts industry and environment.
- b) Focus on common goals and solutions (short run, transition period  
and long run.)
- c) Summary of Highlights
- VII. 4:00 PM-General Discussion - Future Directions
- a) Role of National, State and Local Government
- b) Participants' Recommendations
- VIII. Adjournment

ENERGY FORUM PARTICIPANTS

Judge Daniel F. Foley, Moderator  
Box 889  
Rochester, Minnesota 55901  
507/288-7667

Jan E. Marfyak  
U.S. Department of Energy  
Office of Conservation and Solar Applications  
1200 Pennsylvania Avenue N.W.  
Washington, D.C. 20461

Edward W. Mackins  
Assistant Director  
Internal Affairs Commission  
The American Legion  
P. O. Box 1055  
Indianapolis, Indiana 46206

Robert Spanogle  
Membership Director  
The American Legion  
P. O. Box 1055  
Indianapolis, Indiana 46206

James Whitfield, Executive Director  
The American Legion  
P. O. Box 1055  
Indianapolis, Indiana 46206

J. W. "Bill" Steinsiek  
Chairman, Subcommittee on Energy  
Internal Affairs Commission  
The American Legion  
1001 Holly Street  
Blytheville, Arkansas 72315

Abbott E. Fay, Jr., Chairman  
Energy Committee  
Department of Colorado  
714 North Pine  
Gunnison, Colorado 81230

John S. Homan, Chairman  
Energy and Conservation Committee  
The Department of California American Legion  
P. O. Box #1111  
Running Springs, California 92382

✓ Noel Pearman, Development Engineer  
Honeywell, Inc.  
Honeywell Plaza  
Minneapolis, Minnesota 55408

*TIE two together*

~~✗~~ Ronald E. Griffith  
Energy Program Consultant  
Northern States Power Company  
414 Nicollet Mall  
Minneapolis, Minnesota 55401

(5)

✓ David G. Velde, Assistant Commissioner  
Minnesota Department of Agriculture  
420 State Office Building  
St. Paul, Minnesota 55155

✓ Robert T. Thornburg, Executive Director  
Minnesota Petroleum Council  
1020 Northern Federal Building  
St. Paul, Minnesota 55102

Lawrence W. Binger, Consultant  
St. Paul Area Chamber of Commerce  
300 Osborne Building  
St. Paul, Minnesota 55102

Dixie L. Diehl, Manager  
Local Services  
Minnesota Energy Agency  
740 American Center Building  
St. Paul, Minnesota 55101

✓ Jerome Kuehn, Planning Administrator  
Department of Natural Resources  
Centennial Building  
St. Paul, Minnesota 55155

✓ Leonard LaShomb, Executive Vice President  
AFL-CIO  
175 Aurora Avenue  
St. Paul, Minnesota 55103

~~✗~~ Wayne Schnirring, Chairman  
Conservation/Environmental Committee  
Waltham, Minnesota 55982

✓ Minnesota Community College Board  
41 Sherburne Avenue  
St. Paul, MN 55101

✓ Minnesota Hospital Association  
2333 University Ave. S.E.  
Minneapolis, MN 55418

✓ Minnesota Association of Health Care Facilities  
2850 Metro Boulevard  
Minneapolis, MN 55435

✓ MN Food Retailers Association  
555 Wabasha  
St. Paul, MN 55102

✓ MN Council of Churches  
122 W. Franklin Street, Room 215  
Mpls. 55404

✓ Building Owners and Managers Association  
Soo Line Building  
Mpls. 55402

✓ Building Owners and Managers Association  
Northern Federal Building  
St. Paul 55102

✓ MN Restaurant Association  
2001 University Ave.  
~~Minneapolis 55418~~ St. Paul 55104

I CAN  
For Insulation Contractors Association NW  
✓ 825 Sibley Memorial Highway  
St. Paul 55118

✓ Mr. Eugene D. Gennaro, President  
MN Science Teachers Association  
University of MN  
Depat. of Curriculum and Instruction  
370 Peik Hall  
U of M  
159 Pillsbury Drive  
Mpls. 55455

✓ MN Bankers Association  
332 Baker Building  
Mpls. 55402

✓ Savings and Loan Association  
303 WCCO Building  
Mpls. 55402

✓ American Institute of Plant Engineers  
Harlan Trunvold, President  
Paper Calmenson and Company  
P.O. Box 3432  
St. Paul 55165



American Society of Mechanical Engineers  
Albert W. Libke, Chairman  
✓ 16400 Hilltop Road  
Eden Prairie 55344

Society of Manufacturing Engineers  
Mr. C. G. Lee, President  
✓ 9109 Cedar Avenue, #208  
Bloomington 55420

✓ National Farmers Organization  
Exchange Building  
South St. Paul, MN 55075

✓ MN Association of Cooperatives  
55 Sherburne Avenue  
St. Paul 55103

✓ MN Home Economics Association  
2080 Maryhill Drive  
Mpls. 55422

✓ MN Association of Commerce and Industry  
480 Cedar Street  
St. Paul 55101

(Check to see if already done)

✓ North Central Electrical *League*  
4600 W. 77th Street  
Minneapolis 55435

✓ Blue Flame Contractors  
6418 Cambridge  
Mpls. 55426

✓ Northwestern Bank *Corporation*  
1200 Northwestern Bank Building  
Minneapolis 55480

✓ Community Action Programs  
Governor's Manpower Office  
690 American Center Building  
150 E. Kellogg Blvd.  
St. Paul 55101

✓ Farm Home Administration  
252 Federal Building  
Court House  
St. Paul 55101

✓ Farmers Union  
1717 University  
St. Paul 55104

✓ The Farmer Magazine  
1999 Shepherd Road  
St. Paul 55116

✓ MN Association of School Administrators  
Hanover Building  
480 Cedar  
St. Paul 55101

(Check)



✓ MN Elementary School Principals Association  
41 Sherburne  
St. Paul 55101

✓ MN School Boards Association  
P.O. Box 119  
St. Peter, MN 56082

Check

✓ Regional Educational Cooperative Service Units  
Department of Education  
Capitol Square  
St. Paul 55101

✓ Department of Administration - Building Codes Division  
480 Metro Square Building  
7th and Robert Streets  
St. Paul 55101

✓ Consulting Engineers in MN  
Suite 126  
5009 Excelsior Blvd.  
Mpls. 55416

Check

✓ MN Private College Counsel  
10 Capitol Square Building  
550 Cedar St.  
St. Paul 55101

✓ MN State University Board  
407 Capitol Square Blvd.  
550 Cedar St.  
St. Paul 55101

✓ Metropolitan Transit Commission  
801 American Center Building  
150 E. Kellogg Blvd.  
St. Paul 55101

✓ MN Mining and Manufacturing  
3M Center  
Hudson Road  
St. Paul 55106

✓ Farmers Union Central Exchange  
P.O. Box G  
St. Paul 55165

✓ Northwestern Bell  
224 So. 5th St.  
Minneapolis 55402

✓ Department of Public Safety  
Transportation Building  
John Ireland Blvd.  
St. Paul 55155

✓ MN Safety Council  
145 Hamm Bldg.  
St. Paul 55102

✓ Triple A  
7 Travelers Trail  
Burnsville 55337

✓ YMCA  
30 So. 9th St.  
Minneapolis 55402

✓ MN Motor Transport Association  
Griggs Midway Building  
1821 University Ave.  
St. Paul 55104

✓ Energy Resources Center  
Honeywell Plaza  
Minneapolis 55422

(Combine)

✓ YWCA  
1130 Nicollet Ave.  
Minneapolis 55403

✓ The Farm Bureau  
P.O. Box 3370  
St. Paul 55165

MINNESOTA'S MAJOR UTILITIES

✓ General Manager  
 Cooperative Power Association  
 3316 W. 66th St.  
 Minneapolis, Minnesota 55435

✓ General Manager ✓  
 Dairyland Power Cooperative  
 2615 East Avenue S.  
 LaCrosse, Wisconsin 54601

✓ President ✓  
 Interstate Power Company  
 1000 Main St.  
 Dubuque, Iowa 52001

✓ President ✓  
 Minnesota Power and Light Co.  
 30 West Superior St.  
 Duluth, Minnesota 55802

✓ General Manager  
 Minnkota Power Cooperative  
 Grand Forks, North Dakota 58201

✓ President *John Schatz* ✓  
 Northern States Power Company  
 414 Nicollet Mall, 5th Floor  
 Minneapolis, Minnesota 55401

✓ President  
 Ottertail Coper Company  
 215 South Cascade  
 Fergus Falls, Minnesota 56537

✓ John A. Cobb, General Manager ✓  
 Rochester Public Utilities  
 506 First Ave. N.E.  
 P.O. Box 6057  
 Rochester, Minnesota 55901

✓ President  
 United Power Association  
 Elk River, Minnesota 55330

*Margaret  
 Post*

✓ District 12 Community Council ✓  
2380 Hampden  
St. Paul, Minn 55104

✓ Centre for Local Self-Reliance ✓  
3302 Chicago Ave. S. E. Entrance  
Mpls. 55407

✓ Minn. Dept. of Natural Resources  
Centennial Office Bldg  
St. Paul, Minn 55155.

✓ Minn. PCA  
1935 N. County Rd B2  
Roseville, Minn 55113.

✓ Minn. Dept. of Economic Development ✓  
480 Cedar  
St. Paul, Minn 55155  
State & Fed EPA

✓ Minn. Energy Agency - Center Building  
720 American Center Building  
150 East Kellogg Blvd  
St. Paul, Minn 55155 101

✓ Environmental Balance Assoc of Minn  
Minnesota Building  
St. Paul, Minn 55155

✓ Minn. Dept. of Education  
Capitol Square Building  
St. Paul, Minn 55155



✓ Minn Apartment Association

1821 University Ave.

St. Paul, Minn 55104 646-1902

Ed Harrington, Vice Pres.

call ✓ Minnesota Environmental Ed. Bd Karen Loechler

1-23

105 Hennepin Square Bldg

St Paul, Minn 55413

378-7010

✓ Minnesota Housing Tenance Agency ✓

Hanover Bldg

480 Cedar Street

St. Paul, Minn 55101 296-7608

call ✓ Minnesota Public Interest Research Group

1-23

1:30

3036 University Ave. SE

Minneapolis, Minn. 55414 376-7554

Jonathan Mott, Admin Dir.

✓ Minn. Social Service Assn

614 Portland Ave

St Paul, Minn 55102 225-7871

nothing!

American Red Cross

Arlene Atkinson

100 South Robert Street

St. Paul Minn 55102 291-6789

Steven Bullock Linda Horse

Mobile Oil



✓ Minn. Vocational - Technical Education ✓  
Division Capital Square Bldg. 296-3994

✓ Dept. of Natural Resources  
Soil & Water Conservation Board  
Centennial Office Bldg 296-3767

✓ American Legion Dept. of Minn.  
Marvin Gerdesmeier  
9330 Harriet Avenue South  
Minneapolis, Minn 55420

✓ Alternative Sources of Energy Donald & Marilee ✓  
Box 90A  
Milaca, Minn. 56353 612-983-6892

✓ Community Education  
Lawrence Eric  
(Community School Advisory Council)  
680 Capital Square Bldg  
550 Cedar Street  
St Paul 55101 296-2587

St Paul Area Chamber of Commerce  
Osborn Bldg - St Paul

✓ Minn Library Association ✓  
(Mary J. Heiges, Pres. 425-7756  
319-15th Ave S.E.  
Minneapolis 55455  
State Organization Service

Joan McDonald ✓  
Minneapolis ✓

733 Marquette Avenue  
Minneapolis, Minn 55402 372-4664

✓ Northern States Power Company ✓  
414 Nicollet Mall  
Mpls. 55401

✓ Joint Religious Legislative Coalition  
Benno W. Salewski, Dir.  
122 W. Franklin Avenue  
Mpls. 55404

✓ MECCA ✓  
P.O. Box 80089  
St Paul, Minn 55108  
Don Corill Skinner, Pres

✓ Seira Club, North Star Chapter  
4343 Bloomington Ave  
Minneapolis 55407 Leigh Oltmanns,  
Adm. Asst.

✓ Azah Halton League  
Suite 210, 111 E. Franklin Ave  
Mpls. 55404 Mattie Peterson, Pres.

✓ Tenants Union  
1513 East Franklin Ave ✓  
Mpls. 55404  
Helen Rosenfeld, Dir.

✓ Mr. James Wright ✓  
807 Transportation Bldg ✓  
St Paul 55155

You were asked to bring "paper-work" samples in order to compare with those of other Leagues for your information and evaluation. This recording sheet is for your own use--you may wish to note ideas, recommendations for your Board to consider, compliments to pass on! Some of the questions the group will work on together; others are for your own evaluation.

1. Budgets Compare in turn all the other budgets with yours.

What is the range of total expenditure? \_\_\_\_\_ to \_\_\_\_\_  
highest lowest

Is there anything on which you spend substantially less than the others?

What?

Is there anything on which you spend substantially more than the others?

What?

Do your sources of funding differ from the other Leagues?

How?

2. Bulletins Compare in turn all the other bulletins with yours.

Is there any noticeable difference in "look"--format, printing, paper used, size, etc.?

Which one do you think would most interest:

a prospective member \_\_\_\_\_

a citizen of the community \_\_\_\_\_

a League member \_\_\_\_\_

What would you say are three purposes of the bulletin? (Discuss)

1.

2.

3.

3. Minutes Compare in turn all the samples of Board minutes.

Do you observe any differences in the minutes? Yes No

If yes, would you say they are primarily  
form--specify:

content--specify:

What should be included in Board minutes? Discuss and list.

Are your Board minutes usually detailed enough to give an absent member a good grasp of the meeting?

Are your Board minutes usually clear enough for your consultant to understand what went on?

PROCEED TO THE MULTIPLE CHOICE QUESTIONS WHEN EVERYONE IN THE GROUP IS FINISHED.



✓ Common Cause  
Room 307  
555 Watasha Street  
St Paul  
55102

~~Betty Bayless, Exec Dir.~~

✓ Chamber of Commerce of US ✓  
NW Division  
Suite 535, 6600 France Ave South  
Minneapolis, Minn 55435  
Steven Nooley, Manager

✓ Minnesota AFL-CIO  
175 Aurora Avenue  
St Paul, Minn 55103  
David K. Roe, President

✓ Minn. Association of Commerce  
and Industry  
Hanover Bldg  
480 Cedar St.  
St Paul, Minn 55101  
Oliver S. Perry, Pres.

✓ Minn. Taxpayers Assoc.  
812 Minn. Bldg  
St Paul, Minn 55101  
Donald Patrick, Exec. Dir.

✓ Upper Midwest Council  
Federal Reserve Bank Bldg  
Minneapolis, Minn.  
55480  
George Thiss, Exec Dir.

League of Women Voters of Minnesota

GROUP \_\_\_\_\_

Presidents Workshop  
June 1, 1977  
St. Olaf College  
Northfield

IMPLEMENTATION PLAN FOR SELECTED GOAL:

OTHER

FIRST STEP	PERSON RESPONSIBLE	KEY STEP	PRACTICAL STRATEGY	CONSIDERATIONS	COMPLETION DATE	CONSIDERATIONS
Example						
Increase public awareness of current action	PR/Item Chp.	Find a member-popular issue	Organize action campaign Build relations with the media		Dec. '77	Face controversy without fear

✓ ECOL  
Mpls Public Library

William D. Green ✓  
Public Advisor  
550 Cedar St  
ME2B 612/29619923

DeVac - windows

Robert Michaud





## LEAGUE OF WOMEN VOTERS OF MINNESOTA

555 WABASHA • ST. PAUL, MINNESOTA 55102 • TELEPHONE (612) 224-5445

The League of Women Voters of Minnesota has received a Department of Energy grant through the League of Women Voters of the United States Education Fund to conduct an energy education project. In cooperation with the Minnesota Energy Agency, League representatives will be trained as energy resource persons for their communities. Two films for general energy education will be purchased and circulated throughout the state. They are "Bottom of the Oil Barrel" and "The Sunbeam Solution."

In order to avoid duplication of projects, it is important to know what existing or planned energy education projects may be available to Minnesota communities. At the same time, there is a need to know where to direct requests for certain types of energy-related services and information.

For those reasons, I am writing to request that you describe ongoing or planned energy education projects, and that you outline the kinds of information/service requests you are equipped to answer. The information will be made available to workshop members in January. Copies of the resource list will be compiled and placed in local public libraries.

If you have brochures that describe your energy projects or services, we will be happy to include them in resource packets for workshop members. At this time we expect 50-75 participants.

Kindly return the enclosed form to me before January 10, 1978. If you have questions, please contact me at 612-636-4409.

Thank you for your assistance.

Sincerely,

Margaret Post, Manager  
Energy Education Project

P:M

(Over)

Name \_\_\_\_\_

Address \_\_\_\_\_ Phone \_\_\_\_\_

Organization representing \_\_\_\_\_

What energy education projects do you have at this time?

What energy-related services do you provide?

What plans do you have for energy-related education projects or services in the future?

Who should contact your organization for energy-related information or services (i.e. customers, community organizations, residents within a certain geographical area, etc.)?

Whom should they contact?

Name \_\_\_\_\_

Address \_\_\_\_\_ Phone \_\_\_\_\_

Do you know of other organizations that are providing energy-related projects and information/service? Please name.

✓ Wanda Olson, Specialist ✓  
Home Economics and Family Living  
266 McNeal  
U of M  
St. Paul 55108

✓ Dr. Harold Cloud  
228A  
Agricultural Engineering  
U of M  
St Paul 55108

✓ State 4-H ✓  
Leonard Harkness, Program Director  
475 Coffey Hall  
U of M.  
St Paul, Minn 55108

---

Min. Society of Professional Engineers  
Robert Michaud 339-4941

✓ Daniel G. Sheridan, Exec Dir  
MSAIA  
314 Clifton Ave  
Minneapolis, Minn 55403  
prev

Science Museum of Minn.  
30 East 10th Street  
St Paul, Minn 55107

✓ Staples Minn. Energy Project ✓  
Staples Public Schools,  
Staples, Minn 56479

✓ Association for Appropriate Technology ✓  
1501 South Fourth Street  
Minneapolis  
Minn 55454

✓ John Webber, Todd City Energy Coordinator ✓  
Courthouse Annex  
Long Prairie, Minn 56347

✓ Association of Minnesota Counties ✓  
James C. Shipman, Exec. Director  
Room 203  
55 Sherburne Ave. St. Paul 55103

✓ League of Minn. Cities ✓  
300 Hanover Bldg  
480 Cedar Street  
St Paul, Minn 55101  
Dean Lund, Exec Dir.

✓ Educational Cooperative Service Unit  
223 Health Services Building  
University of Minn.  
1518 North Cleveland Ave  
St Paul 55108  
Gerald G. Manneigh, Exec Dir. 373-4860

✓ ABUW State Pres. M. Nelson ✓  
P.O. Box 554  
Virginia, Minn. 55792

✓ Minn. Senior Federation ✓  
Bruno Ajala, President  
3853 26th Ave So  
Mpls 55406

✓ Citizens League ✓  
530 Syndicate Bldg.  
Mpls. 55402  
Ted Kolderie, Exec Dir.

Extension



League of Women Voters of Minnesota

Presidents Workshop  
June 1, 1977  
St. Olaf College  
Northfield

GROUP \_\_\_\_\_

IMPLEMENTATION PLAN FOR SELECTED GOAL:

					OTHER
FIRST STEP	PERSON RESPONSIBLE	KEY STEP	PRACTICAL STRATEGY CONSIDERATIONS	COMPLETION DATE	CONSIDERATIONS
Example					
Increase public awareness of current action	PR/Item Chp.	Find a member-popular issue	Organize action campaign Build relations with the media	Dec. '77	Face controversy without fear

Have these been contacted?

~~Fest~~,

Rochester Public  
Utilities

✓ Rochester Chamber of Commerce

✓ SCORE Harold Mac 288 - 1122  
Environomics Committee " "

✓ Common Ground 2314 Elliot Ave S. mpls. 55404

NAP

✓ Environmental Balance Association

NAP

Science Museum of Minn. - energy display in "Marketplace  
of Possibilities" mpls. Public Lib

MSAIS

✓ local chapter of the American section of the  
International Solar Energy Society (Peter Pfister Architectural  
Science)

MEEB

✓ Minn. Environmental Sciences Foundation, Inc.  
5400 Glenwood Ave., mpls. 55422

MSAIA

✓ The American Underground Association, U of M  
Dept. of Civil & Mineral Engineering

✓ Ouroboros & Ouroboros East

MAR 7 1978

COMMUNITY ACTION AGENCIES DIRECTORY

ANOKA COMMUNITY ACTION PROGRAMS (Anoka County)	James Hearn	403 Jackson, Rm 306 Anoka, MN 55303 612/421-4760 x 1375
ARROWHEAD ECONOMIC OPPORTUNITY AGENCY (Cook, Lake & St Louis)	Vincent Gentilini	Post Office Box 1066 Virginia, MN 55792 218/749-2912
BI-COUNTY COMMUNITY ACTION COUNCIL (Beltrami, Cass)	Michael Ekre	209 1/2 4th Avenue Post Office Box 553 Bemidji, MN 56601 218/751-4631
CLAY-WILKIN OPPORTUNITY COUNCIL (Clay, Wilkin)	Dennis Heitkamp	512 Main Avenue Moorhead, MN 56560 218/233-7514
DULUTH COMMUNITY ACTION PROGRAM (City of Duluth)	Gregory Hanson	206 City Hall Duluth, MN 55802 218/723-3536
GOODHUE-RICE-WABASHA CITIZENS ACTION COUNCIL (Goodhue, Rice, Wabasha)	Richard Harris	281 Main, P.O. Box 157 Zumbrota, MN 55992 507/732-7391
INTER-COUNTY COMMUNITY COUNCIL (Clearwater, East Polk, Pennington, Red Lake)	Roy Jorgenson	Gambles Bldg, Box 187 Oklee, MN 56742 218/796-5144
KOOCHICHING-ITASCA ACTION COUNCIL (Koochiching, Itasca)	Bruce Leino	5 NE Fifth Street Grand Rapids, MN 55744 218/326-1236
LAKES & PINES COMMUNITY ACTION COUNCIL (Carlton, Aitkin, Pine, Chisago, Kanabec, Mille Lacs, Isanti)	Roger Corbin	129 W Forest Avenue Mora, MN 55051 612/679-1800
MAHUBE COMMUNITY COUNCIL (Mahomen, Becker, Hubbard)	Del Hultgren	518 Summit Avenue Detroit Lakes, MN 56501 218/847-9253
MINNESOTA VALLEY ACTION COUNCIL (Blue Earth, Brown, Nicollet, LeSueur, Waseca, Sibley)	James Tierney	Martin Bldg, 114 South Front Mankato, MN 56601 507/387-4135
MINNEAPOLIS COMMUNITY ACTION AGENCY (Minneapolis)	Bill Dudley	323M, Mpls City Hall Minneapolis, MN 55415 612/348-8858
NORTHWEST COMMUNITY ACTION COUNCIL (Kittson, Roseau, Lake of the Woods, East Marshall)	Dwayne Otterson	Post Office Box 193 Badger, MN 56714 218/528-3258

OTTERTAIL-WADENA COMMUNITY ACTION COUNCIL (Ottertail, Wadena)	Roy Issacson	Post Office Box "L" New York Mills, MN 56567 218/385-2900
PRAIRIE FIVE CSA (Lac Qui Parle, Chippewa, Yellow Medicine, Big Stone, Swift)	Luella Ninneman	Courthouse Montevideo, MN 56265 612/269-6578
RAMSEY ACTION PROGRAMS, INC. (Ramsey)	Edith Lallier	100 Market Sq., 509 Sibley St Paul, MN 55101 612/227-8954
REGION SIX EAST COMMUNITY ACTION AGENCY (Kandiyohi, Meeker, McLeod, Renville)	Byron Zuidema	Box 1357, So., Hwy 71 Plaza Willmar, MN 56201 612/235-0850
SCOTT-CARVER ECONOMIC COUNCIL (Scott, Carver)	Judson Kenyon	Sixth & Oak Carver, MN 55315 612/448-2302
SOUTH CENTRAL COMMUNITY ACTION COUNCIL (Cottonwood, Jackson, Martin, Watonwan)	Judy Sinn	303 3rd St., P.O. Box 207 Jackson, MN 56143 507/847-2643
SEMCAC (Fillmore, Winona, Dodge, Steele)	Halvor Lacher	Post Office Box 549 Rushford, MN 55971 507/864-7741
SOUTHWESTERN MN OPPORTUNITY COUNCIL (Murray, Nobles, Pipestone, Rock)	Donald Shannon	P.O. Box 393, 1152 Oxford Worthington, MN 56187 507/376-4195
TRI-COUNTY COMMUNITY ACTION PROGRAM (Crow Wing, Todd, Morrison)	Joe Ayers	404 2nd Avenue, NE Little Falls, MN 56345 612/632-3691
TRI-COUNTY ACTION PROGRAMS, INC. (Benton, Sherburne, Stearns)	Dick Holm	315 St Germain, Box 1205 St Cloud, MN 56301 612/251-1612
TRI-VALLEY OPPORTUNITY COUNCIL (Norman, West Polk, West Marshall)	Bill Brummer	114 South Main Street Crookston, MN 56716 218/281-5832
WEST CENTRAL MN COMMUNITIES ACTION (Traverse, Grant, Stevens, Pope, Douglas)	Joyce Pesch	Post Office Box 397 Elbow Lake, MN 53531 218/685-4486
WESTERN COMMUNITY ACTION COUNCIL (Lincoln, Lyon, Redwood)	Donald Stapf	Atlantic Hotel, Box 246 Marshall, MN 56258 507/532-2504
WRIGHT COMMUNITY COUNCIL (Wright County)	Vernon Hedner	Post Office Box 39 Waverly, MN 55390 612/658-4415



Allen Chapman

Energy Emergency

Income eligible people can turn to CAPS  
CAP - to fiscal 79

Barb Shummers / X State Welfare <sup>296-</sup> 4622

State workers at county  
Intro thanking ECOL and Intermediate  
Tech



Here lies Ferdinand Post  
who built a kite reel and  
sold it, almost.

8 AM

3 panel committee & go over  
governor's office.