



"Papa" boogles
the "Shack"
sheep

"The story of this Picture"

It is the Cottage on Ed's Sheep Ranch. where he had over 400 sheep - He staid there from 1923 untill 2 years later when we sold it. This was taken after a severe hail storm. As you can see patches on the roof where Ed had to patch it - You can see baby Ray sitting near the door - So the picture was taken in 1924 - He staid at the Lodge to keep Alex first year after we were married -

Frank Taylor looked after sheep - & stayed there year around except when Ed's there

Not winterized tho stayed here 1 winter. Nana disliked this place "with a vengeance". Had Planned to build a new house here when it sold to some people in Larkin Sheep & all.

(Noted in
Nov 1989) Eva telling Shirley

lived at Lodge in winter when Ray was small, But in Summer moved Here. Were here only a couple of years until rented the Earl Archibald Place on the Lake, a few blocks from Lodge. Road went next to Lake in Old Days. This was the big old Archibald Home. Belous bought it later for Summer Home. Still there

close friends

Dave & Tillie Archibald, about age of Joe, Josie Earl their only son

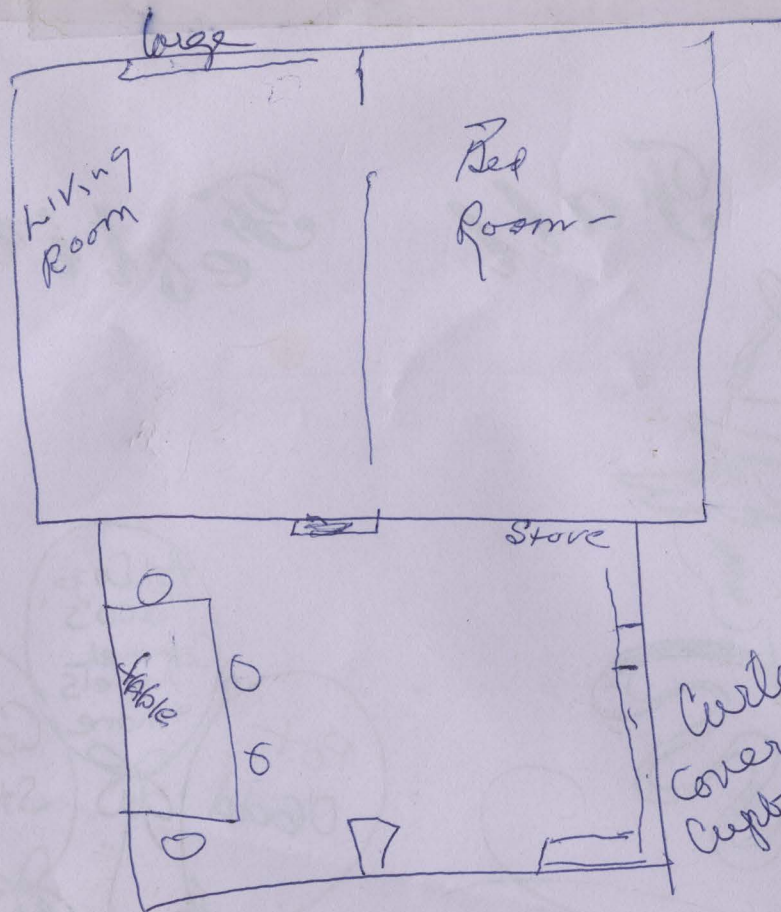
Bess - Marie - Ethel

Loaned - OR - at least I'd like a copy including information on back

Bay Lake Era

1922 - 1924
Before that - Ed's Sheep Farm

"NANA"



Rae Slept in
Basket Set on
Sofa in L.R.

Company (Sisters)
Slept on Sofa -
Sometimes Grandma
Nellie visited & slept
with them

Also had a Small
Rollaway bed
made a big flowered
Cover - stored
in corner of L.R.

took good chairs to
Lodge in winter

Sheep much more work
than ever dreamed

Wicker chair -
Rae sitting in it

Bill Rutter
also bought
some sheep &
added to
the stock



MINNESOTA HISTORICAL SOCIETY

Copyright in this digital version belongs to the Minnesota Historical Society and its content may not be copied without the copyright holder's express written permission. Users may print, download, link to, or email content, however, for individual use.

To request permission for commercial or educational use, please contact the Minnesota Historical Society.



www.mnhs.org