



# NAM News

Volume XVI • Number 13

SECTION TWO

March 27, 1948

# 1948

## OFFICERS

## DIRECTORS

## COMMITTEES

GIFFORD, WALTER, Chairman of the Board, American Tel. & Tel.

C. O. BICKELHAUPT, Vice-President, American Telephone

BROWN, WALTER LINDSEY, Vice-President, Western Electric Company

PAUL GARRET, Vice-President, General Motors, New York City

WILSON, CHARLES E., President, General Motors

WILSON, CHARLES E., President, General Electric, 570 Lexington Ave., N.Y.C.

BROWN, LEWIS, President, Johns-Manville

COLBY CHESTER, former Chairman of the Board, General Foods

COLT, SAMUEL S., President, Bankers Trust, New York City

WHITNEY, GEORGE, President, J. P. Morgan Co.

CHRISTIAN GAUSS, Dean Emeritus, Princeton University

WALLACE, deWITT, President, Readers Digest, Pleasantville, N.Y.

LEE MARSHALL, Chairman of the Board, Continental Baking, Co., 5th Ave.N.Y.

RUTHENBURG, LOUIS, President, Servel Inc.

# NAM

## OFFICES

### GENERAL OFFICES

14 West 49th Street  
New York 20, N. Y.

### WASHINGTON OFFICE

Investment Building  
Washington 5, D. C.

### REGIONAL AND BRANCH OFFICES

1303 Candler Building  
Atlanta 3, Ga.

907 Little Building  
Boston 16, Mass.

231 South LaSalle Street  
Chicago 4, Ill.

312 Thomas Building  
Dallas 1, Texas

943 National Bank Building  
Detroit 26, Mich.

1026 Pacific Mutual Building  
Los Angeles 14, Calif.

1672 Northwestern National Bank Bldg.  
Minneapolis 2, Minn.

William Penn Hotel  
Pittsburgh 30, Pa.

826 Pacific Building  
Portland 4, Ore.

1807 Arcade Building  
St. Louis 1, Mo.

1267 Russ Building  
San Francisco 4, Calif.

**OFFICERS  
DIRECTORS  
COMMITTEES  
1948**

## STAFF OFFICERS

NOEL SARGENT . . . . . *Acting Executive Vice President and Secretary*

KENNETH R. MILLER . . . . . *Treasurer and Business Manager*

T. M. BRENNAN . . . . . *Vice President, Inter-Association Relations*

WALTER CHAMBLIN, JR. . . . . *Vice President, Government Relations*

HOLCOMBE PARKES . . . . . *Vice President, Public Relations*

RALPH ROBEY . . . . . *Chief Economist*

RAYMOND S. SMETHURST . . . . . *Counsel*



# TABLE OF CONTENTS

Offices . . . . .	Inside Front Cover
Staff Officers . . . . .	2
Your 1948 Officers, Directors, and Committees . . . . .	4
Officers . . . . .	5
Directors . . . . .	17
Executive Committee . . . . .	27
Finance Committee . . . . .	27
Policy Committees . . . . .	27
Economic Policy Committee . . . . .	27
Government Relations Policy Committee . . . . .	28
Inter-Association Relations Policy Committee . . . . .	28
Public Relations Policy Committee . . . . .	28
Auditing Committee . . . . .	28
Cooperation with Community Leaders, Committee on . . . . .	29
Distribution Committee . . . . .	31
Economic Controls Committee . . . . .	33
Employee Benefits Committee . . . . .	34
Government Spending Committee . . . . .	36
Industrial Capital Committee . . . . .	38
Industrial Problems Committee . . . . .	39
Industrial Relations Committee . . . . .	40
International Relations Committee . . . . .	42
International Relations, Advisory Group on . . . . .	43
Membership Review Committee . . . . .	44
Patents and Research Committee . . . . .	44
Taxation Committee . . . . .	46
National Industrial Council . . . . .	50
Index . . . . .	53

## **YOUR 1948 OFFICERS, DIRECTORS AND COMMITTEES**

THE officers, directors and committeemen of NAM constitute a true cross-section of American Industry, representing every type and size of manufacturing enterprise in all parts of the country. It is this fact which enables your Association to fulfill its role as the champion and spokesman of the nation's industry under the private enterprise system.

The Board of Directors, elected by the membership, is made up of men who, representing both small and large companies, are recognized by their fellow businessmen as leaders in their industries and communities. The NAM policies and activities resulting from their deliberations have the sole aim of serving you and the American public.

Meeting throughout the year, NAM's standing committees formulate policy recommendations on various industrial and economic issues, both current and long-range. The representative composition of these committees insures thorough consideration of all viewpoints, and the ultimate adoption by the Board of positions which reflect the crystallized thinking of American manufacturers.

The men who represent you in NAM demonstrate the high calibre of leadership which American Industry possesses. The loyal support of 16,500 members demonstrates its unity of purpose.



**MORRIS SAYRE**

*President, NATIONAL ASSOCIATION OF MANUFACTURERS*

*President, Corn Products Refining Company, New York, N. Y.*

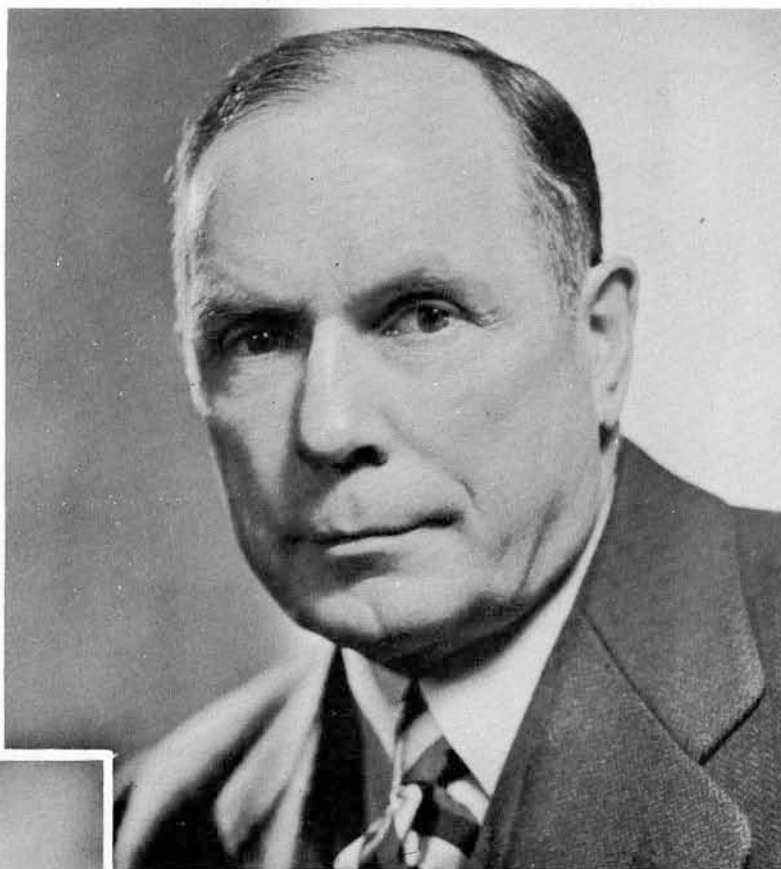




**EARL BUNTING**  
*Chairman of the Board*

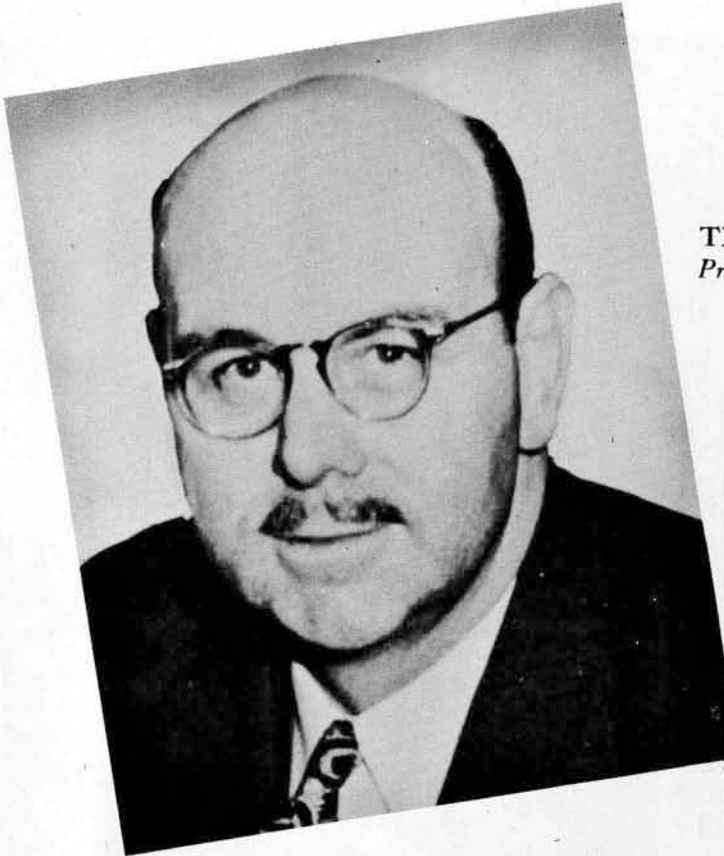
*President, O'Sullivan Rubber Corporation, Winchester, Va.*

**ROBERT R. WASON**  
*Chairman, Executive Committee*  
*President, Manning, Maxwell & Moore, Inc.,*  
*New York, N. Y.*

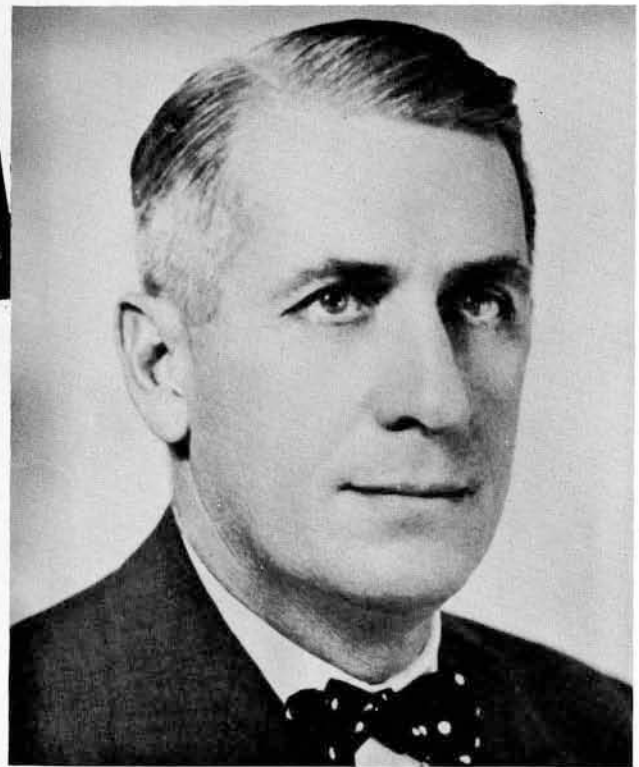


**IRA MOSHER**  
*Chairman, Finance Committee*  
*Director, Russell Harrington Cutlery Co.,*  
*Southbridge, Mass.*

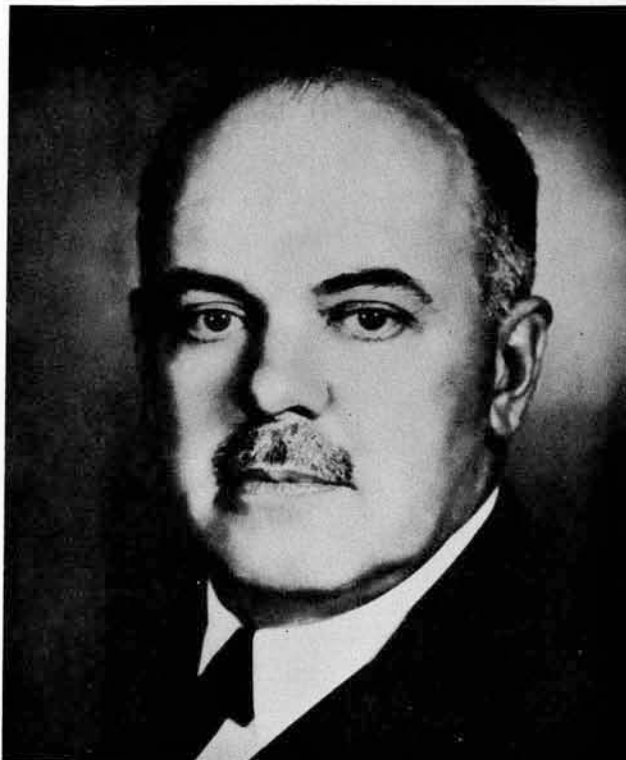
## **NATIONAL VICE PRESIDENTS**



**THOMAS J. BANNAN**  
*President, Western Gear Works, Seattle, Wash.*



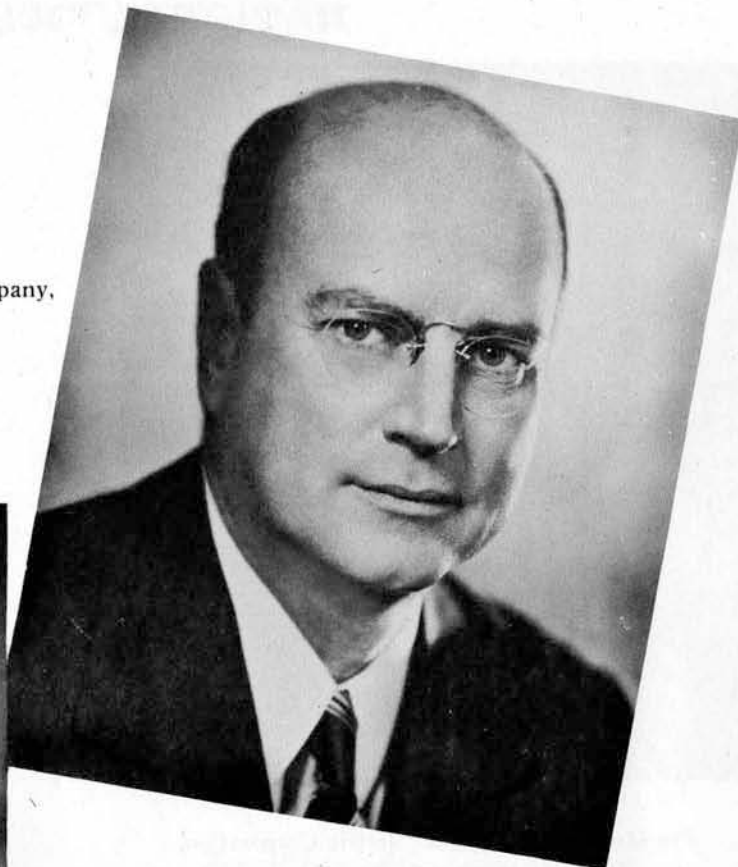
**HUGH M. COMER**  
*President and Treasurer,  
Avondale Mills, Sylacauga, Ala.*



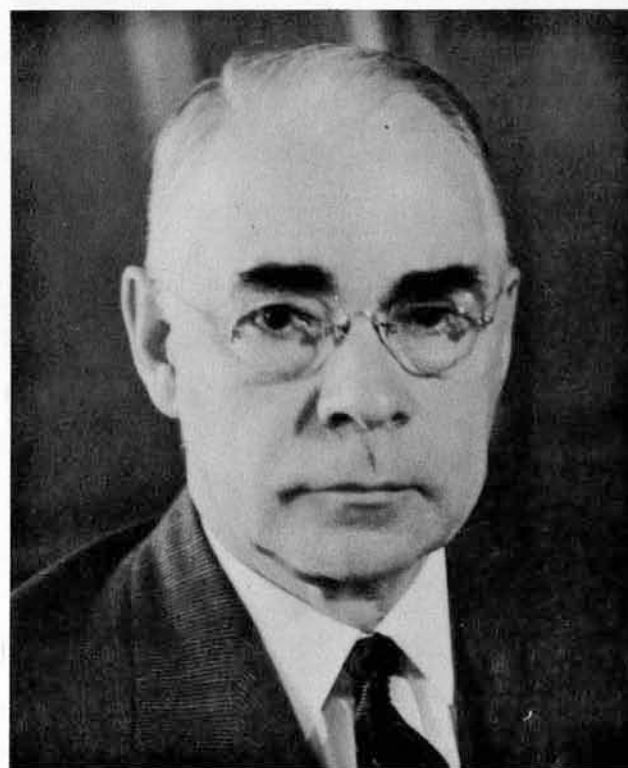
**B. E. HUTCHINSON**  
*Chairman—Finance Committee,  
Chrysler Corporation, Detroit, Mich.*

## **NATIONAL VICE PRESIDENTS**

**JAMES H. McGRAW, JR.**  
*President, McGraw-Hill Publishing Company,  
Inc., New York, N. Y.*



**DON G. MITCHELL**  
*President, Sylvania Electric Products, Inc.,  
New York, N. Y.*



**J. HOWARD PEW**  
*Sun Oil Company, Philadelphia, Pa.*



## NATIONAL VICE PRESIDENTS



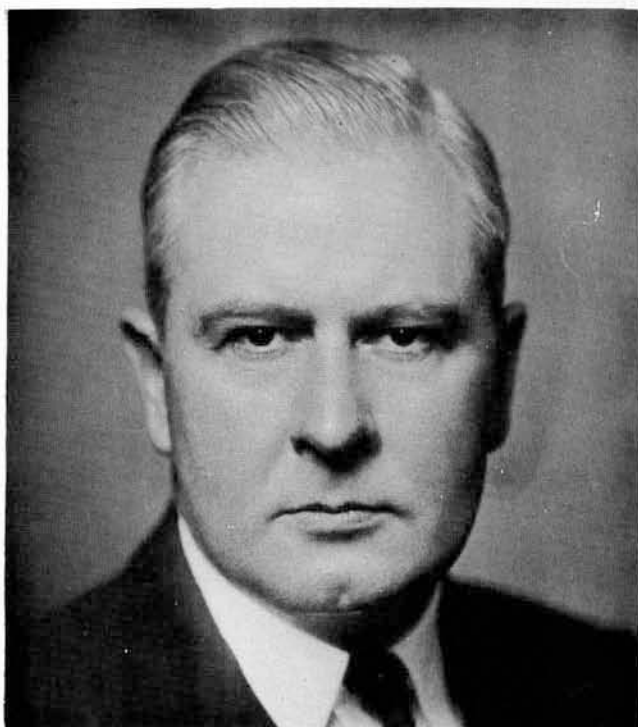
**GWILYM A. PRICE**

*President, Westinghouse Electric Corporation,  
Pittsburgh, Pa.*



**CLARENCE B. RANDALL**

*Vice President, Inland Steel Company,  
Chicago, Ill.*



**CLOUD WAMPLER**

*President, Carrier Corporation, Syracuse, N. Y.*



**WARREN WHITNEY**

*Vice President, James B. Clow & Sons, National  
Cast Iron Pipe Division, Birmingham, Ala.*



## REGIONAL VICE PRESIDENTS



**WALLACE F. BENNETT**

*President, Bennett's, Salt Lake City, Utah*

*Representing:*

*Ariz., Calif., Colo., Nev., N. M., Utah, Wyo.*



**ARTHUR G. DREFTS**

*President, McQuay-Norris Manufacturing Co.,  
St. Louis, Mo.*

*Representing: Ark., Kans., Mo., Nebr.*



**WHIPPLE JACOBS**

*President, Belden Manufacturing Company,  
Chicago, Ill.*

*Representing: Chicago*



**D. I. JOHNSTON**

*General Counsel, T H. Rogers Lumber  
Company, Oklahoma City, Okla.*

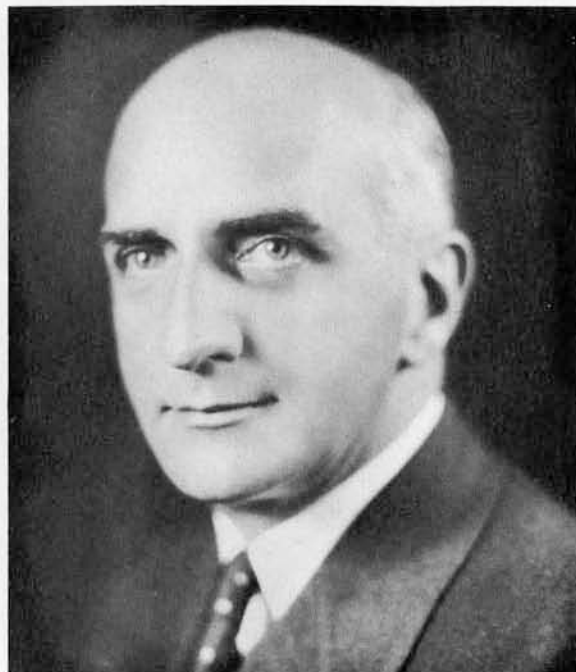
*Representing: La., Okla., Texas*

## REGIONAL VICE PRESIDENTS



**S. E. LAUER**

*President, York Corporation, York, Pa.  
Representing: Del., Md., N. J., Pa., W. Va.*



**E. W. PALMER**

*President, Kingsport Press, Inc.,  
Kingsport, Tenn.  
Representing:  
Ala., Fla., Ga., Miss., N. C., S. C., Tenn., Va.*



**J. P. SPANG, JR.**

*President, Gillette Safety Razor Company,  
Boston, Mass.  
Representing:  
Conn., Maine, Mass., N. H., R. I., Vt.*



**CHARLES J. STILWELL**

*President, The Warner & Swasey Co.,  
Cleveland, Ohio  
Representing: Ky., Mich., Ohio*

## REGIONAL VICE PRESIDENTS



**ERNEST G. SWIGERT**

*President, Hyster Company, Portland, Ore.  
Representing: Idaho, Mont., Ore., Wash.*



**EDGAR F. WENDT**

*President, Buffalo Forge Company,  
Buffalo, N. Y.  
Representing: New York*



**LOTHAIR TEETOR**

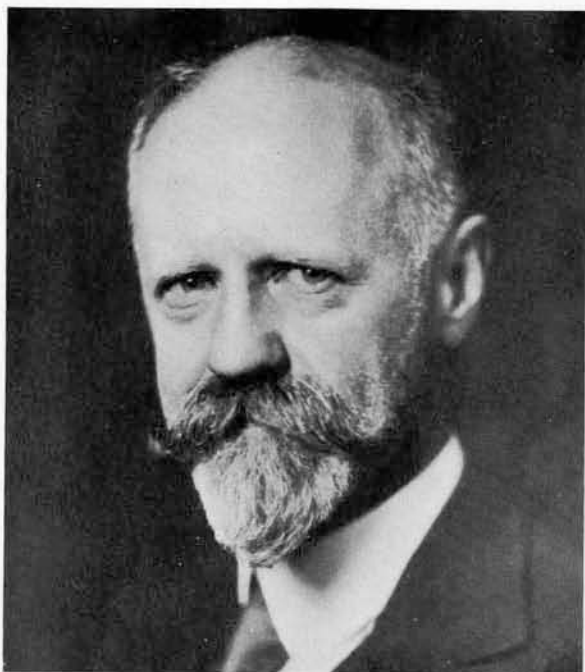
*Chairman of the Board, Perfect Circle Corporation,  
Hagerstown, Ind.  
Representing: Ill. (except Chicago), Ind., Iowa*



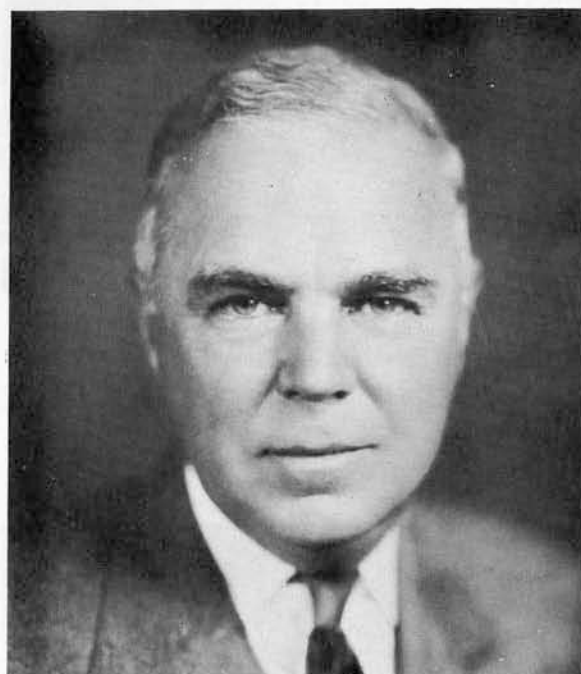
**HARRY W. ZINSMASTER**

*President, Zinsmaster Bread Company,  
Duluth, Minn.  
Representing: Minn., N. D., S. D., Wisc.*

## HONORARY VICE PRESIDENTS



**W. B. BELL**  
*President, American Cyanamid Company,  
New York, N. Y.*



**C. M. CHESTER**  
*Honorary Chairman, General Foods  
Corporation, New York, N. Y.*



**HOWARD COONLEY**  
*Director, Walworth Company,  
New York, N. Y.*



## HONORARY VICE PRESIDENTS



**H. L. DERBY**  
*Industrialist,*  
New York, N. Y.



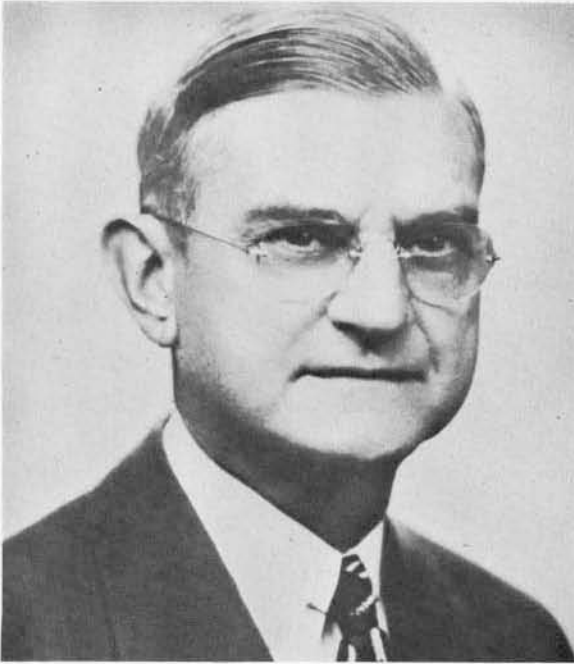
**LAMMOT duPONT**  
*Director, E. I. duPont de Nemours & Company*  
Incorporated, Wilmington, Del.



**WALTER D. FULLER**  
*President, The Curtis Publishing Company,*  
Philadelphia, Pa.



## HONORARY VICE PRESIDENTS



**CHARLES R. HOOK**

*President, The American Rolling Mill Company,  
Middletown, Ohio*



**ROBERT L. LUND**

*Industry Counsel, St. Louis, Mo.*



**H. W. PRENTIS, JR.**

*President, Armstrong Cork Company,  
Lancaster, Pa.*

## BOARD OF DIRECTORS



**JOHN AIREY**  
*Chairman of the Board,*  
King-Seeley Corporation,  
Ann Arbor, Mich.



**S. C. ALLYN**  
*President, The National Cash*  
Register Company, Dayton, Ohio



**M. M. ANDERSON**  
*Vice President, Aluminum Com-*  
pany of America, Pittsburgh, Pa.



**W. R. ARCHER**  
*President, Uncle Johnny Mills,*  
Houston, Texas



**JOHN U. BARR**  
*Vice President, Plymouth Cord-*  
age Company, Federal Fibre Mills  
Division, New Orleans, La.



**J. PAT BEAIRD**  
*President, The J. B. Beaird Com-*  
pany, Inc., Shreveport, La.



**R. C. BENNETT**  
*Vice President, Sangamo Electric*  
Company, Springfield, Ill.



**FREDERICK S. BLACKALL, JR.**  
*President and Treasurer, The*  
Taft-Peirce Manufacturing Com-  
pany, Woonsocket, R. I.



**R. E. BLAKE**  
*Counsel, International Shoe Co.,*  
St. Louis, Mo.



**HENRY M. BLISS**  
*President, Pacific Mills, Boston,*  
Mass.



**HOWARD E. BLOOD**  
*President, Norge Division,*  
Borg-Warner Corporation,  
Detroit, Mich.



**FRED BOHLEN**  
*President, Meredith Publishing*  
Company, Des Moines, Iowa



# MINNESOTA HISTORICAL SOCIETY

Copyright in this digital version belongs to the Minnesota Historical Society and its content may not be copied without the copyright holder's express written permission. Users may print, download, link to, or email content, however, for individual use.

To request permission for commercial or educational use, please contact the Minnesota Historical Society.



[www.mnhs.org](http://www.mnhs.org)