



## [Corporate Records](#)

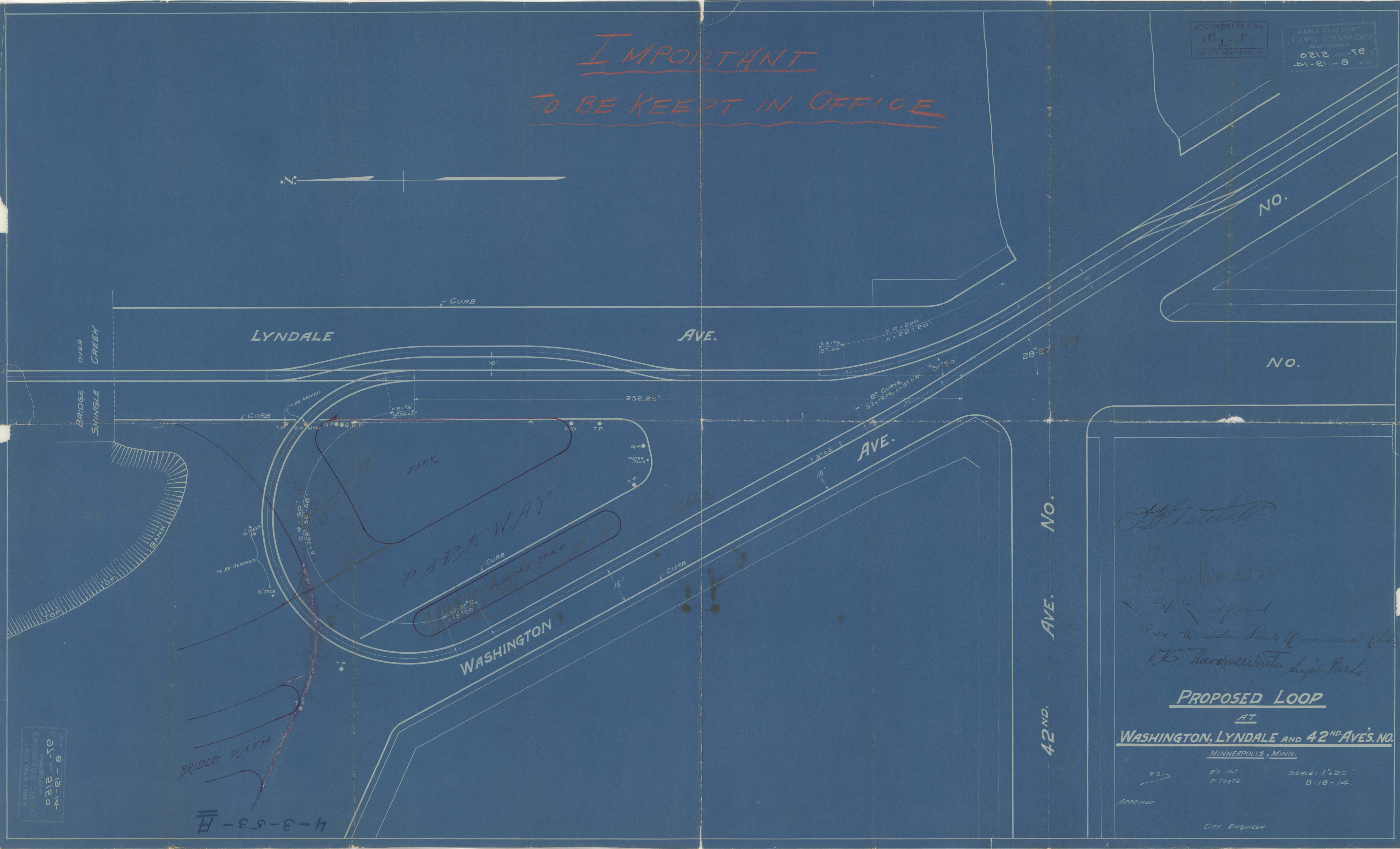
### **Copyright Notice:**

This material may be protected by copyright law (U.S. Code, Title 17). Researchers are liable for any infringement. For more information, visit [www.mnhs.org/copyright](http://www.mnhs.org/copyright).



IMPORTANT  
TO BE KEPT IN OFFICE

DOCUMENT FILE No.  
289 J-P  
TWIN CITY RAPID TRANSIT CO.  
ENGINEER'S OFFICE  
MINNEAPOLIS  
ST. NO. 2120  
4-12-14



*J.B. Litchell*  
*OK*  
*C. Johnson*  
*L.H. Lindquist*  
Pres. Garden Park Commercial Club  
*OK* *Thermon White* *Super Parks*

**PROPOSED LOOP**  
**AT**  
**WASHINGTON, LYNDALE AND 42<sup>ND</sup> AVE'S. NO.**  
**MINNEAPOLIS, MINN.**  
R.S. 167  
P. 70 & 76  
SCALE: 1" = 20'  
8-18-14  
CITY ENGINEER

ENGINEER'S OFFICE  
MINNEAPOLIS  
ST. NO. 2120  
4-12-14

BRIDLE PATH  
4-3-5-3-H