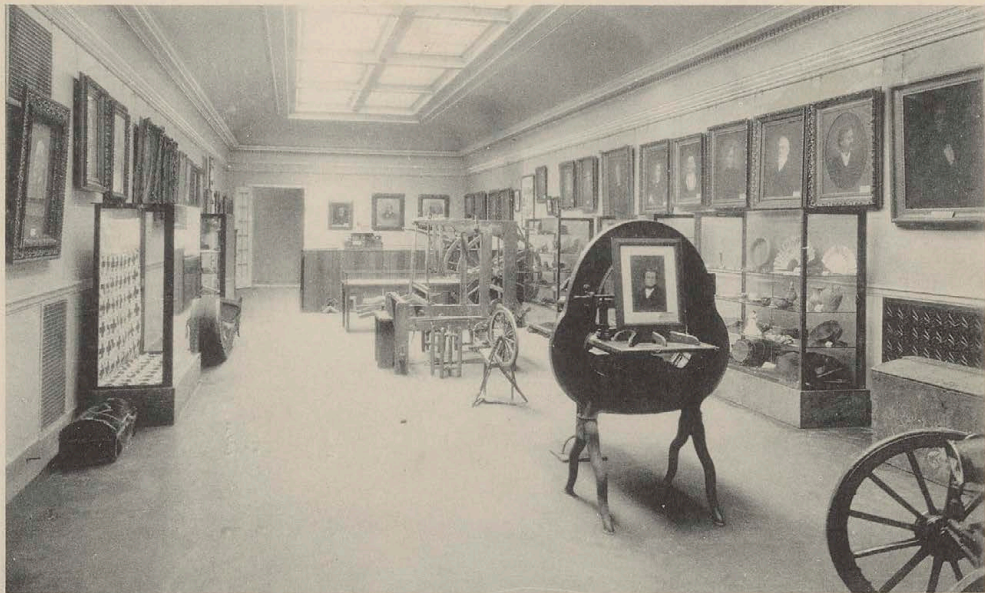




[Minnesota Historical Society  
Institutional Archives.](#)

## **Copyright Notice:**

This material may be protected by copyright law (U.S. Code, Title 17). Researchers are liable for any infringement. For more information, visit [www.mnhs.org/copyright](http://www.mnhs.org/copyright).



EAST HALL, MUSEUM OF THE MINNESOTA HISTORICAL SOCIETY, ST. PAUL.

FM6.74

# Post Card

PLACE STAMP  
HERE.

—  
UNITED STATES  
AND CANADA,  
ONE CENT.

—  
FOREIGN,  
TWO CENTS.

In this room are displayed many interesting articles of pioneer life. An old hair trunk, a Red River dog-sledge, a cloth loom, a Red River cart, a spinningwheel, and a printing press—the first in Minnesota—are shown clearly in the picture.

AV1993.168.3



ENTRANCE HALL, HISTORICAL BUILDING. ST. PAUL

FM 6-722

# Post Card

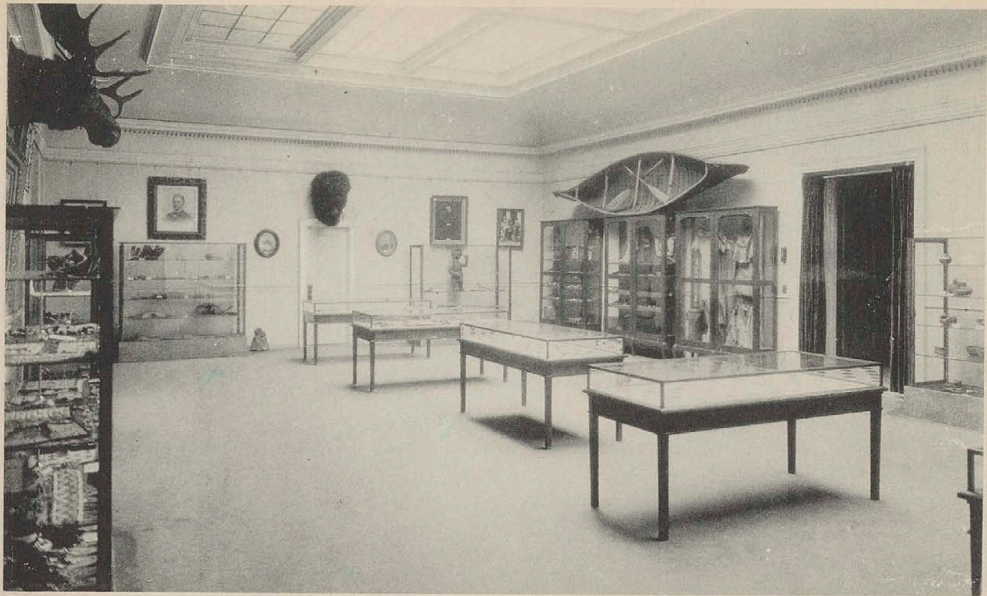
PLACE STAMP  
HERE.

—  
UNITED STATES  
AND CANADA,  
ONE CENT.

—  
FOREIGN,  
TWO CENTS.

The home of the Minnesota Historical Society is a truly Minnesota building. The gray granite of its exterior comes from Sauk Rapids, the marble for the floors from Kasota, and the stone for the entrance hall from Frontenac.

AV1993.168.2



INDIAN ROOM, MUSEUM OF THE MINNESOTA HISTORICAL SOCIETY, ST. PAUL.

# Post Card

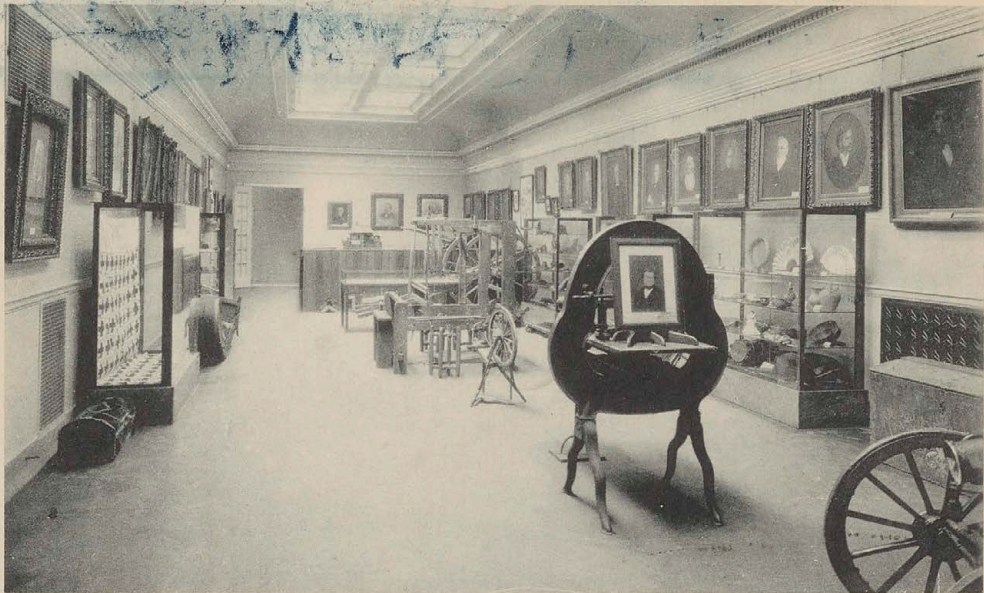
PLACE STAMP  
HERE.

—  
UNITED STATES  
AND CANADA,  
ONE CENT.

—  
FOREIGN,  
TWO CENTS.

The society possesses extensive ethnological and archeological collections illustrating the Indian history of the State. These include beadwork, weapons, tools, stone implements, pottery, and costumes.

AV1985.181.2



EAST HALL, MUSEUM OF THE MINNESOTA HISTORICAL SOCIETY, ST. PAUL.

# Post Card

PLACE STAMP  
HERE.

—  
UNITED STATES  
AND CANADA,  
ONE CENT.

—  
FOREIGN,  
TWO CENTS.

In this room are displayed many interesting articles of pioneer life. An old hair trunk, a Red River dog-sledge, a cloth loom, a Red River cart, a spinningwheel, and a printing press—the first in Minnesota—are shown clearly in the picture.

AV1985.181.4



MUSEUM CORRIDOR, HISTORICAL BUILDING, ST. PAUL.

# Post Card

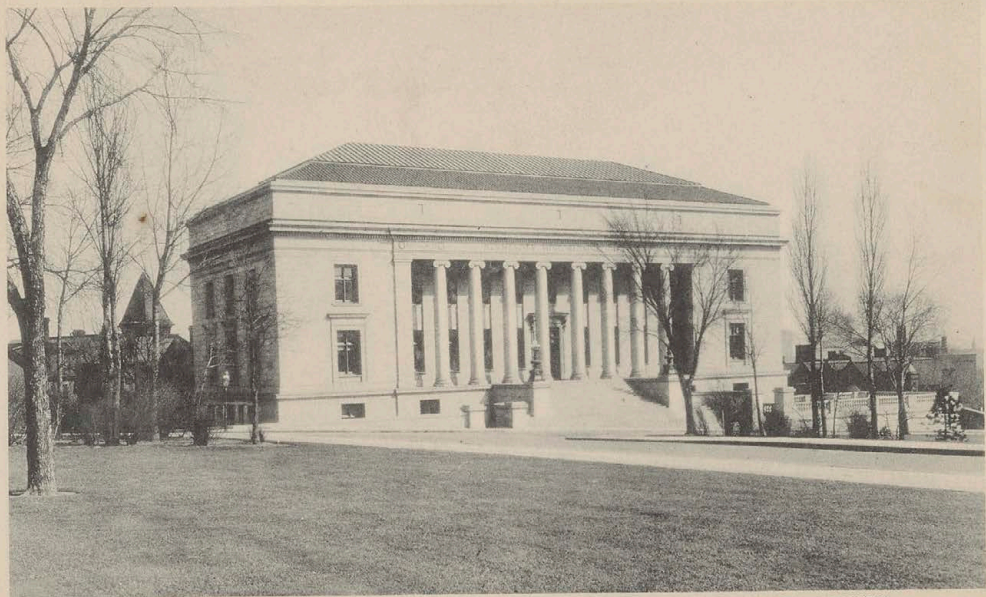
PLACE STAMP  
HERE.

—  
UNITED STATES  
AND CANADA,  
ONE CENT.

—  
FOREIGN,  
TWO CENTS.

More than 30,000 persons visit the museum of the Minnesota Historical Society annually. Of these nearly 6,000 are school children who come in classes to study history and geography from the objects displayed. The pictures and exhibits are given for preservation by friends of the society.

AV1985.181.3



HISTORICAL BUILDING, ST. PAUL, HOME OF THE MINNESOTA HISTORICAL SOCIETY.

FM 6.72

# Post Card

PLACE STAMP  
HERE.

—  
UNITED STATES  
AND CANADA,  
ONE CENT.

—  
FOREIGN,  
TWO CENTS.

A three-story, fireproof building, erected by the State, 1916-18, at a cost of \$500,000. The society was founded in 1849, and now has a large special library, valuable manuscript collections, and a museum, all open to the public. It is supported by state appropriations.

AV1993.168.1



READING ROOM, MINNESOTA HISTORICAL SOCIETY, ST. PAUL.

FM6.75L

# Post Card

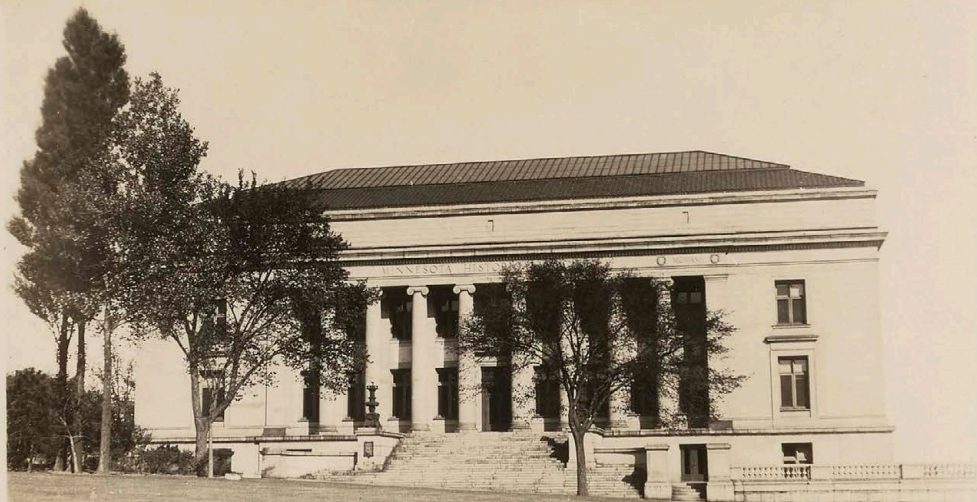
PLACE STAMP  
HERE.

—  
UNITED STATES  
AND CANADA,  
ONE CENT.

—  
FOREIGN,  
TWO CENTS.

The library of the society, 150,000 books and pamphlets, including 13,000 bound newspaper volumes, is shelved on eight floors of fireproof steel stacks. Over 600 Minnesota newspapers and periodicals are currently received as gifts from the publishers.

AV1993.168.4



MINNESOTA HISTORIC SOCIETY, ST. PAUL, MINN 333

FM6.72

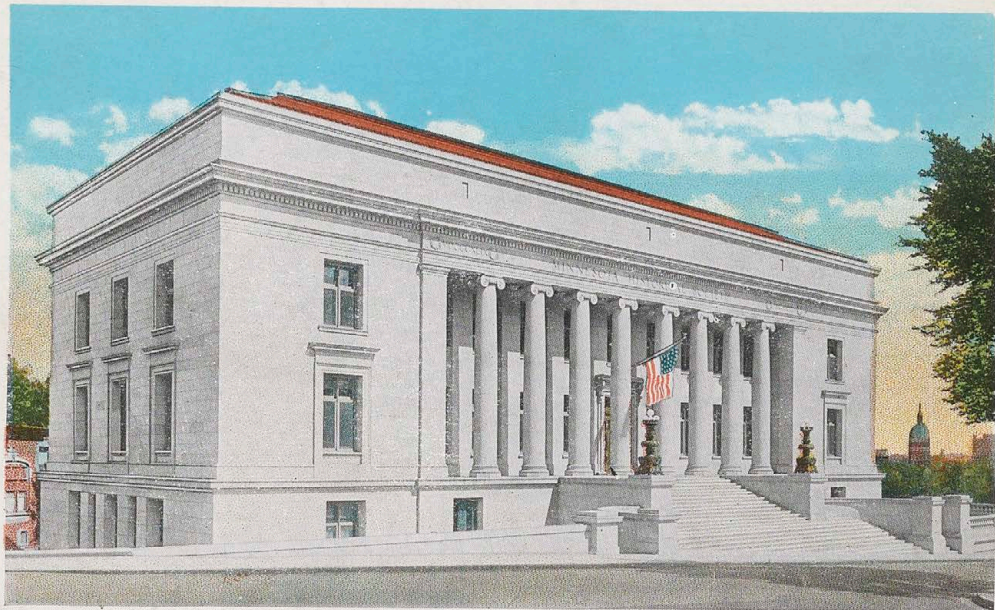
POST CARD

CORRESPONDENCE

ADDRESS



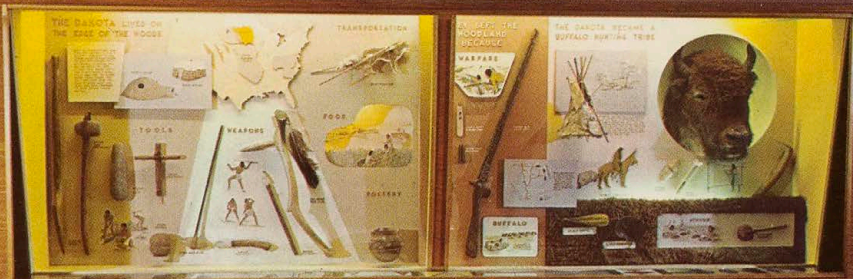
AV1994.223



MINNESOTA HISTORICAL BUILDING, ST. PAUL, MINN.

108407

# THE DAKOTA



TWO PANELS OF THE DAKOTA INDIAN EXHIBIT  
in the Minnesota Historical Society's Museum,  
St. Paul. The Dakota (or Sioux) lived in the  
southern half of Minnesota when the white man  
arrived. Their culture was built upon the buffalo  
which provided them with food, clothing, and  
shelter.

PHOTO BY EUGENE D. BECKER

FM67

AV1985.179.38  
1976

CURTEICHCOLOR® 3-D NATURAL COLOR REPRODUCTION (REG. U. S. A. PAT. OFF.)

POST CARD

PLACE  
STAMP  
HERE

SDK-166



PAUL HUEL M HANSEN

... BORN BERGEN NORWAY 1810 ...  
DIED GOODHUE COUNTY MINNESOTA 1881  
WHO THROUGH THE NORWEGIAN-AMERICAN  
PRESS BLAZED THE WAY FOR THE  
SCANDINAVIAN SETTLERS TO THE  
... RED RIVER VALLEY ...

PRESENTED TO THE MINNESOTA HISTORICAL SOCIETY BY  
THE NORWEGIAN-DANISH PRESS ASSOCIATION OF AMERICA

u Hansen, Paul Hjelm  
p

#5764

copy of plaque in Minnesota Historical Society  
(second floor corridor)



FM6.75MU

Minnesota Historical  
Museum Interiors

35378

Photo: Monroe Kelly

AV1981.193.488

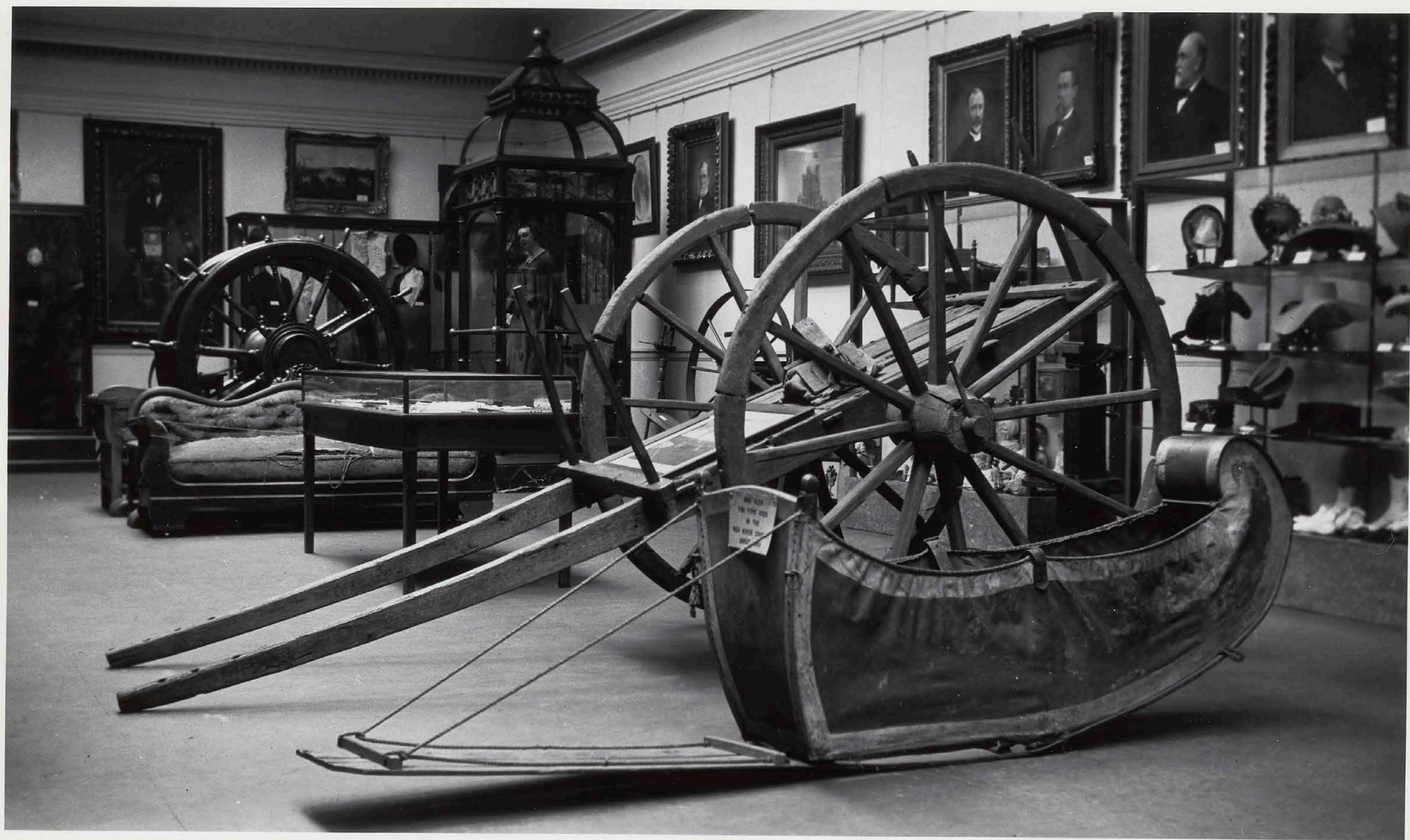


FM6.7

Minnesota Historical  
Museum Interiors 35 377

Photo: Monroe Killey

AV1981.193.4/89



FMG. 7

Minnesota Historical  
Museum Interiors 35379

Photo: Monroe Killey

AV 1981.193.487



FM6.7

Minnesota Historical  
Museum Interiors

35376

Photo: Monroe Killey

AV1981. 193.490



FM6.7

MN Historical Museum  
Interiors

35380

Photo: Monroe Killey

AV1981.193.486