



Martin O. Weddington Papers.

Copyright Notice:

This material may be protected by copyright law (U.S. Code, Title 17). Researchers are liable for any infringement. For more information, visit www.mnhs.org/copyright.

**1990
ANNUAL CHAPTER REPORT**

PHI BETA SIGMA FRATERNITY, INCORPORATED.

**Focusing On Issues That Impact
The African-American Male.....**



ZETA NU SIGMA CHAPTER

**Minneapolis/St. Paul, Minnesota
Great Lakes Region**

ZETA NU SIGMA 1990 CHAPTER REPORT

ZETA NU SIGMA CHAPTER

PHI BETA SIGMA FRATERNITY, INC.

1990 ANNUAL REPORT

PHI BETA SIGMA FRATERNITY, INC.

REGION: Great Lakes

REPORT FROM: January 1990 Through December 1990

I. Membership Summary:

A.	Number Of Members.....	75
1.	Active.....	50
2.	Inactive.....	25
3.	New.....	02
4.	Reinstated.....	13
5.	Transferred.....	10

II. Numbers Of Chapter Meetings..... 12

III. Chapter Treasury:

- A. Date Of Most Recent Audit: December 15, 1990
- B. Name And Address Of Bank Facility: First Bank, St. Paul,
332 Minnesota Street
St. Paul, Minnesota 55101

IV. Chapter Officers And Committee Chairman:

President	Brother Leondias Butcher
Vice President	Brother Calvin Simmons
Treasurer	Brother James Randle
Secretary	Brother Dwane Martin
Bigger & Better Business	Brother O'berry Lloyd
Social Action	Brother Darwin Marshall
Education	Brother George Robinson
Panhellenic Council	Brother George Sanders
Undergraduate Affairs	Brother Robert Doty
Members-At-Large	Brother Bobby VanBuren

Date Of Report: April 20, 1990

Reported By: Brother Dwane Martin

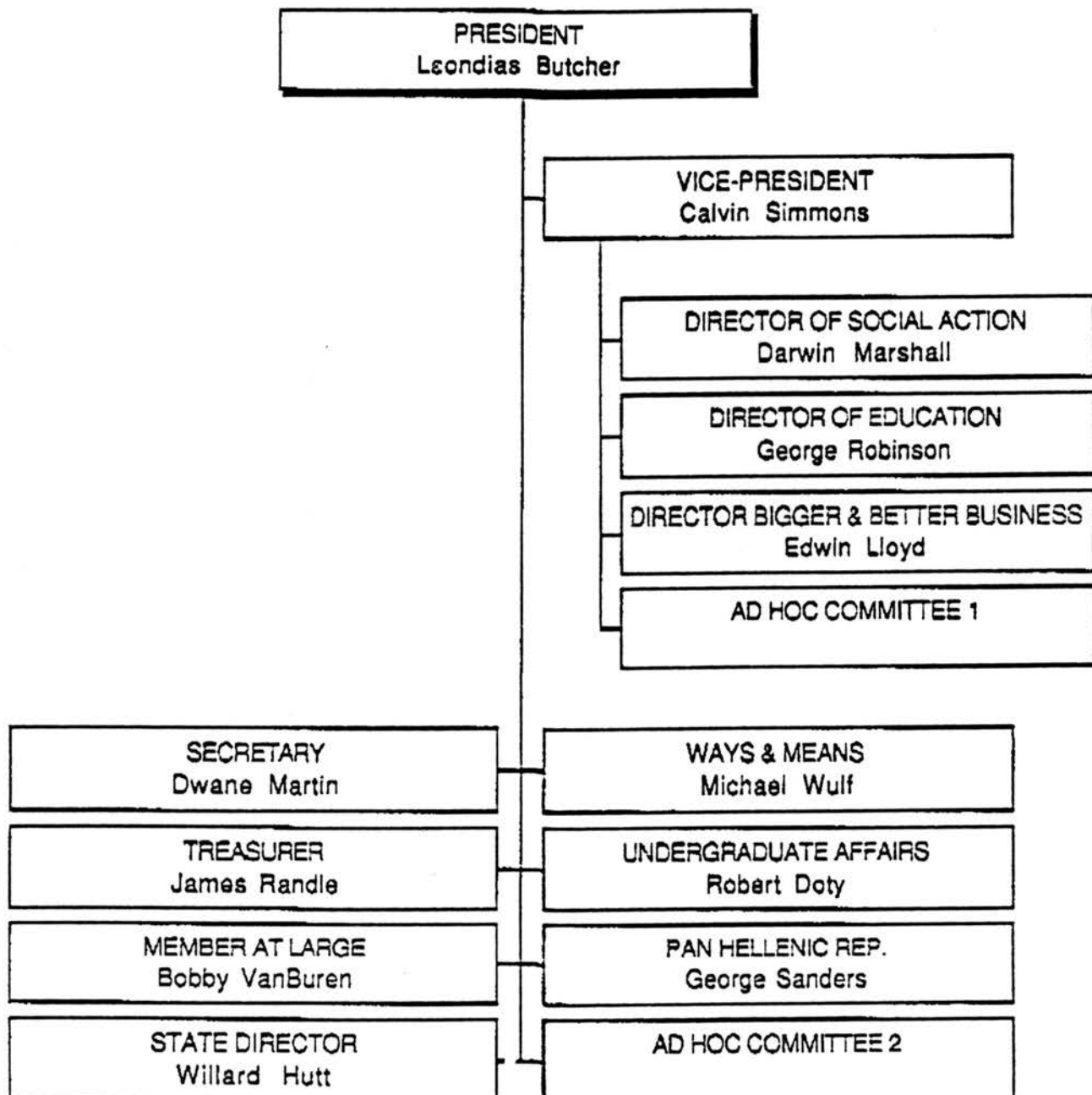
Table of Contents

Bigger and Better Business	3
Social Action	12
Education	30
Founder Day Program	48
Membership Drive	54
Sigma Summer Sizzler	57
Spring Meltdown	60
Brotherhood Meeting	63
Bachelors Appreciation Night	66
Ms. Black Minn. Program	67
Juneteenth Basketball Invitational	70
Pan Hellenic Competition	75
Fraternity Picnic	80
Fraternity Christmas Celebration	86
Nominating Report	88
President's Report	89
Membership Roster	91
Financial Report	95
Appendix	99
1990 Regional Award	100

ZETA NU SIGMA CHAPTER

PHI BETA SIGMA FRATERNITY, INC. - GREAT LAKES

1990 LOCAL CHAPTER ORGANIZATIONAL CHART



National Programs



BIGGER AND BETTER BUSINESS

ZETA NU SIGMA 1990 CHAPTER REPORT

PROGRAM: BIGGER AND BETTER BUSINESS - KWANZAA

DATE: December 29, 1990

LOCATION: Central Community Center

COMMITTEE

CHAIR: Brother Darwin Marshall

PROGRAM OBJECTIVES:

- 1) Present a seminar, free of charge, to the public on personal financial affairs and entrepreneurship.
- 2) Promote the concept of Vjamaa. Vjamaa is the principle for the fourth day of Kwanzaa and means, "Cooperative Economics."

COMMENTS:

This program was developed to highlight different areas of economic importance to the Afro-American community. It also rounded out the Kwanzaa holiday festival we were sponsoring.

RESULTS:

- Three one-hour seminars on the topics of "End of the Year Tax", "Financial Planning", and "Small Business Start Up".
- Afro-American professionals with expertise in the related topics agreed to contact the seminars for free.
- The seminars were well appreciated by all people in attendance at the Kwanzaa festival. Each seminar attracted approximately 15 people.
- The facilitator for each Seminar enjoyed conducting their portion of the program and offered to work with us again in the future.

Culture For Service - Service For Humanity

KWANZAA FESTIVAL

In Room 4 - **BIGGER & BETTER BUSINESS** 1-4:00

END OF THE YEAR TAX Orlando Hayes
Roger Hayes & Company

FINANCIAL PLANNING..... Andre' Marshall
Equitable Ins. Co.

SMALL BUSINESS START UP..... Jerry Lee
Metropolitan State Univ.

**AFRICAN AMERICAN
BUSINESS OPPORTUNITY.....** Steve Obayuwana

KWANZEE COMMITTEE

Leondias Butcher (Pres.PBS) Rex Marshall, Chair (PBS)

Keith Anderson (PBS) Phil Walker (PBS)

James Dandle (PBS) Bobby VanBuren (PBS)

Vernecia Sims - ZetaPhiBeta Sikivu Chagulia - Kwanzaa
History

Maxie Wyser (Oak Park) Jerri Alexander (Oak Park)

Pepo Alfajiri Antar Saleen (Video)

Delinda Price (Artwork)

ENTERTAINMENT

"HANDS ON"

NEW SALEM YOUTH CHOIR

MATTIE CLARK - Storyteller

S.E.E.D. ACADEMY

PEPO ALFAJIR - African Dance

KESHA DRYDEN - Singer

MACEDONIA YOUTH CHOIR

IOTTA BETA - Black Women In History

BROTHER IN CHRIST - Gospel Singers

MS. A. SYKES - Jazz Singer

VAN NIXON - Reggae Music

Eric Mayberry
Master of Ceremonies

Stage Crew - L. A. Production

ZETA NU SIGMA 1990 CHAPTER REPORT

PROGRAM: SIGMA'S REFERRAL

DATE: March, 1990

LOCATION: Medtronic

COMMITTEE

CHAIR: Brother Edwin Lloyd

PROGRAM OBJECTIVES:

- 1) To formalize an informal system of referring people into corporate America. This has been in place within Sigma for many years.
- 2) To develop a formal system that would allow the networking of Sigma with corporate America contact to facilitate the placement of more people of color.
- 3) To develop a formalized system of networking that can be passed to other chapters and organizations.

COMMENTS:

Edwin Lloyd and Lee Butcher met with the Director of Human Resources for Medtronic to brainstorm how to go about formalized informal systems that have been going on in the black organizations for years. A system that networks people of color into corporate America based on corporate contacts who are men of Sigma. Whether that person being placed is a new graduate from College or a Brother trying to relocate in corporate America, he can contact a Sigma brother for assistance.

We had a very lively meeting that day, and Jerry Pietrini of HRD Medtronic was very encouraged and happy to see a non-profit organization stepping in to take on the task of moving people of color into corporate America. He was very optimistic that we could do this and his biggest concern is - being non profit and being successful with one of two placements could overnight become a success beyond our control. He questions us on proceeding without a five year plan in place. He said he will be more than happy to

Culture For Service - Service For Humanity

ZETA NU SIGMA 1990 CHAPTER REPORT

commit five of his placements this year for consideration of interviewing anyone we recommend. He would also be more than happy to work with us and bring in one of his co-workers from one of the either companies to help finalize our plans when we get to that point.

RESULTS:

After the meeting with Jerry Pietrini we realized that this was bigger than what we had envisioned it to be. We had several meetings to brainstorm how to go about structuring a program for next year and for three and a five year plan. Up to this date, we have yet to finalize those plans although we have had some success with Jerry. Through our networking of being able to place two people into Medtronic, one being a Sigma brother who was displaced because of a job layoff, Jerry has been one that has stood behind his remarks that he made at the meeting and we feel very strong and encouraged that once we get the program on paper it will be one that can be passed through the other organizations and even maybe tapped as a national program. Sigma referral to be continued in 1991.

ZETA NU SIGMA 1990 CHAPTER REPORT

PROGRAM: JUNIOR ACHIEVEMENT

DATE: February 27, 1990

LOCATION: St. Paul Public Schools

COMMITTEE
CHAIR: George Robinson

PROGRAM OBJECTIVES:

- 1) To provide 8th and 9th grade students with a series of educational modules to assist them in better realizing the economic benefits of staying in school.
- 2) To provide the students with a positive black role model.
- 3) To provide positive interaction with the students to motivate and inspire them to continue their education and ultimate success.

COMMENTS:

The first quarter of 1990 was spent working with 8th and 9th grade students at Highland Park Jr. High. The major objective was to spend time with the students to create a better understanding of the advantages of staying in school.

The curriculum consisted of seven one hour sessions. Each session involved such activities as graph and table readings that illustrated the relationship between earnings potential, training, and education. The students were impressed to discover that in 1985, the median income was \$12,970 for 8 years of schooling vs. \$43,147 for 4 years of college.

The students also had the opportunity to develop budgets and to search for jobs based on a scenario of only having a high school education. They quickly began to see the lack of jobs, housing, and most of all the lack of money that could result with only a high school education.

During the third month of the program, a board game called, "Success" was introduced.

ZETA NU SIGMA 1990 CHAPTER REPORT

The game illustrated the relationship between education and the path to success. It was very interesting to hear the kid's excitement to find that the game would allow them to further their education and a greater excitement to find that the game could force a student to drop out of high school. The key message of the game: there are definite economic advantages for "staying in school".

RESULTS:

Reflecting back, it is truly an eye-opener to realize how much our black youth of today need our encouragement, our time, and most of all our leadership as role models. Unfortunately, 13 and 14 year olds are not focused on the future. It is up to us to assist the educational system through our volunteer efforts. It is most rewarding to give back to the community what it has given us.

At the beginning of the program, the students were asked, "What they wanted to be"./ Over half the class had absolutely no clue. At the end of the program when asked the same question, everyone had a career in mind that involved an education past high school.



**Junior
Achievement**

URBAN OUTREACH PROGRAM

Description: Junior Achievement's Urban Outreach is designed to help inner city and "at-risk" youths grades 5-12 explore entrepreneurship, career options, and basic business concepts. Students gain knowledge through motivating discussion, hands-on activities, and creative thinking. A resource person from the urban community meets with students to share his/her first hand knowledge of business, but most importantly to provide students with a positive role model. The program offers Business Basics for grades 5 and 6, Project Business for grades 8 and 9, Applied Economics for grades 11 and 12 and the JA Company Program for grades 9 thru 12.

Number of volunteers:	1
Title of volunteers:	Consultants
Student level:	Grades 5-12
Programs involved:	BB - Introducing business to young people Grades 5 and 6 PB - Making business come alive Grades 8 and 9 AE - Preparing young people for the world Grades 11 and 12 JA Company Program - Creating Entrepreneurs Grades 9 through 12
Number of weeks:	12-18 Applied Economics and Project Business 1-4 Business Basics, 15 JA Company Program
Program hours per week:	1
Preparation time per week:	1-2 hours
Training:	Varies according to program, 3-7 hours
Program dates:	September - June
Opportunities:	Leadership development/Management Investment in youth Prepare young people for the future Increase understanding of business Giving back to the community Providing volunteer consultants with meaningful, fun experience Being a positive role model



LIFELONG LEARNING

MINORITY ENCOURAGEMENT PROGRAM

PUBLIC SCHOOLS

February 14, 1990

Dear George Robinson

Thank you for volunteering your time in the Junior Achievement Program in the Saint Paul Public Schools.

Your first session will be:

Tuesday, Feb. 27, 1990 at 9:40 a.m.

Please arrive on the above date about 15 minutes earlier in the office so you can meet the principal and your contact person in the building.

If you have any questions please call me at 228-3645

Sincerely,

A handwritten signature in cursive script that reads "Maxine Gaines".

Maxine Gaines

MG:dr

ZETA NU SIGMA 1990 CHAPTER REPORT

SOCIAL ACTION

ZETA NU SIGMA 1990 CHAPTER REPORT

PROGRAM: KWANZAA FESTIVAL

DATE: December 29, 1990

LOCATION: Central Community Center
West River Point - Minneapolis, Minn.

COMMITTEE

CHAIR: Brother Darwin Marshall

OBJECTIVES:

- 1) A complete day of activities designed to educate, entertain, and uplift the community with examples of African-American heritage.
- 2) Develop a Kwanzaa Holiday Program calendar for distribution.
- 3) Sponsor a program with minimal financial liability to the chapter.

COMMENTS:

The Kwanzaa Program was one of the largest single-day programs undertaken in the Chapter's history. Zeta Nu Sigma worked to develop a program that incorporated many organizations and individuals. Extensive work was performed to highlight and promote the activities for not only our event, but also those for the entire seven day holiday. This effort was complicated by the fact that in the Minneapolis area Kwanzaa Holiday had never been jointly coordinated.

Zeta Nu Sigma also continued a recent trend of pursuing sponsorship to help offset the expenses of chapter events. It should also be noted that the program hosted Zeta Nu Sigma activities over the entire day at two sites. The first portion of the program was held at the Central Community Center followed by an evening event at West River Point.

RESULTS:

Zeta Nu Sigma established for the first time a unified and well publicized Kwanzaa Holiday celebration calendar. The publicity also included radio spots, a public service television commercial, articles in the local community, newspapers, as well as the Minneapolis Star & Tribune. This was also supported by flyers, and direct mailings to hundreds of people in the community.

Culture For Service - Service For Humanity

ZETA NU SIGMA 1990 CHAPTER REPORT

Zeta Nu Sigma established a working budget for over \$5000.00 and was able to completely underwrite this program. The Chapter successfully wrote and obtained two grants from the City of Minneapolis. It is especially important to note that not only did Zeta Nu Sigma write these grants for our program but to also helped fund the activities for the entire seven days of Kwanzaa. These grants paid for all appropriate advertising, food, condiments, beverages, and complete funding for our program.

An initial portion of the Program involved developing two African dance and drum routines with boys and girls from local community centers. The planning actually involved six weeks of African dance lessons and drum building sessions for the youth with local professionals.

The first portion of the Program involved live performances by over 10 groups and/or individuals. Talents displayed ranged from church choirs and R&B bands to African dances, storytelling, and a theatrical performance. The Program also provided attendees with opportunities to purchase Afro centric arts, books, jewelry, and clothing from local vendors. Also, volunteer organizations had the chance to share their important contributions to the community by staffing information booths.

A Karamu (feast), a tradition within Kwanzaa, was held free of charge to all people in attendance. The feast contained meat, rice, vegetables, bread and beverage. The second portion of the day long program was a reception and party at the West River Point. The reception was planned to honor all of the volunteers who had assisted with planning and performing and present them with certificates of participation. The party was a hot, jammin' and truly funky event. It brought out many people who were unable to attend the daytime event.

The most outstanding accomplishment was the satisfaction of seeing over 500 people attend the first portion of the program and 150 people attend the night time event despite temperatures 25 degrees below zero. This proved that the efforts of the Men of Sigma were well planned, executed, and thoroughly welcomed by the community. We have established a firm base to continue to bring this program back to the community.

ZETA NU SIGMA 1990 CHAPTER REPORT

KWANZAA COMMERCIAL: RADIO

RADIO

:20

A Kwanzaa Celebration will be taking place from December 26th through January 1st. Kwanzaa Celebrates and reinforces our cultural and community ties .. For more information on events and locations please call ...377-7000 That's 377-7000.

:30

Kwanzaa celebrates African-American Culture and community...There will be a week long celebration from December 26th to January 1st..A special celebration will be held December 29th from noon to 6:00 pm at the Central Gym...For more information on this and other events call 377-7000...That's 377-7000.

:60

From December 26th to January 1st the African American community celebrates Kwanzaa...a celebration of the first fruits...Events will occur throughout the week to strengthen community and cultural ties...Phi Beta Sigma is hosting a Kwanzaa Festival - It will take place at the Central Gym on 35th and 4th Street in South Minneapolis From Noon to 6:00PM. For more information on this and other events call 377-7000 or 871-5915..That's 377-7000 or 871-5915

Culture For Service - Service For Humanity

ZETA NU SIGMA 1990 CHAPTER REPORT

KWANZAA COMMERCIAL

TELEVISION

:20

VIDEO: Camera CU on host or hostess sitting near a Kwanzaa Display
AUDIO: Kwanzaa is a celebration of the African-American community...Join us from December 26th through January 1st for a Kwanzaa Celebration..

VIDEO: Graphic of Events

AUDIO: There will be special events throughout the week..for more information call 377-7000...That's 377-7000.

:30

VIDEO: Camera is focused on Host or hostess near Kwanzaa Display

AUDIO: Kwanzaa reinforces our African-American heritage...

VIDEO: Graphic of events list and phone number...

AUDIO: Please join us for our Kwanzaa celebration from December 26th through January 1st...there will be special events throughout the week...for more information please call the Oak Park Neighborhood Center at 377-7000...that's 377-7000

:60

VIDEO: Camera is focused on host or hostess

AUDIO: From December 26th through January 1st the African-American community will be celebrating Kwanzaa an American based celebration that reinforces our culture and community...

VIDEO: List of events and phone number on graphic

AUDIO: Please join us for celebrations for each day of the Kwanzaa holiday
A special event will take place at the Central Community Gym, 35th and Fourth streets in South Minneapolis...There will be storytelling, poetry readings and much more from noon to 6 PM..For more information on this...

VIDEO: Ms of Host or Hostess

AUDIO: Event and others please call the Oak Park Neighborhood Center at 377-7000...That's 377-7000

Culture For Service - Service For Humanity

MINNEAPOLIS ARTS COMMISSION

323M City Hall
350 South 5th Street
Minneapolis MN 55415-1377

673-3006



May 29, 1990

Rex Marshall
Phi Beta Sigma Fraternity, Inc.
1501 LaSalle Avenue, Suite 511
Minneapolis, MN 55403

Dear Mr. Marshall:

Congratulations! Your organization has been given final approval to participate in the Minority, Ethnic and Neighborhood Arts New Presenters Program.

On May 25, 1990, the Minneapolis City Council approved for funding those community organizations whose proposals were recommended to them by the Advisory Panel of the "New Presenters Program". This approval makes possible the beginning of vouchering activity for your organization.

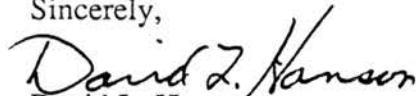
As you may know the vouchering process begins with the submission of your organization's match to the Arts Commission's "New Presenters Program". However, the timing of this cash deposit, as well as the rate at which you voucher for the dollars you have been awarded, varies according to your organization's project timeline. It is not necessary to submit your organization's match until you are ready to request the funding you have been awarded. At the time you need to request project funding call the Arts Commission office to receive the voucher form and information on the vouchering process.

In addition, all organizations receiving funding from the Minority, Ethnic and Neighborhood Arts New Presenters Program must acknowledge the City of Minneapolis and the Minneapolis Arts Commission on all printed, project related materials with the following language:

"This program is supported by the City of Minneapolis and the Minneapolis Arts Commission, through its Minority, Ethnic and Neighborhood Arts New Presenters Program."

Good luck and happy vouchering from the membership and staff of the Minneapolis Arts Commission.

Sincerely,


David L. Hanson
Executive Secretary


Loren Niemi
Chair

DLH:dlh

Enclosure

AFFIRMATIVE ACTION EMPLOYER

TDD (612) 673-2157



November 16, 1990

Minneapolis Community Action Agency
Norwest Midland Building
401 Second Ave So. Ste. #500
Minneapolis, MN 55401

RE: Holiday Food Program

Dear Minneapolis Community Action Agency:

Phi Beta Sigma Fraternity would like to submit our proposal for request to receive funds allocated through the "Holiday Food Program".

The funds would be used to provide food to feed approximately 1500 people attending a Kwanzaa program organized by Phi Beta Sigma Fraternity Incorporated.

During a traditional Kwanzaa week a Karamu (feast) is held. Our fraternity has chosen December 29, 1990, to celebrate Kwanzaa. The program will be targeted at lower socio-economic scaled people who have limited access to cultural arts programs.

The Minneapolis Arts Commission and Phi Beta Sigma Fraternity are funding the activities provided for through the Kwanzaa program with a 3 to 1 matching grant from the Neighborhood Arts New Presenters Program. Phi Beta Sigma Fraternity would like the Minneapolis Community Action Agency to fund the Karamu (see hand-out II) for \$3500.00 to feed approximately 1500 people.

Lil Darling	1166.66
Ramadan Seafood	1166.66
Q Pit Bar-B-Que	1166.66

\$3500.00

The food will be served between noon and 6:00 pm at Minneapolis South Central Gym. This facility is handicap accessible.

Sincerely,
Rex Marshall
Rex Marshall
Phi Beta Sigma Fraternity

MINNEAPOLIS COMMUNITY ACTION AGENCY
COMMUNITY PROGRAMS COMMITTEE MEETING
NOVEMBER 19, 1990

M I N U T E S

Members Present: Edward Godlesky, Marvin Kuhlman, Lee Pratt,
Catherine Hurd, Dick Mangan and
Edward Murphy, Chairperson

Staff Present: William J. Davis, LaVerne Avent and Elvira Tinio

The meeting was convened at 4:40 p.m. at the MCAA Conference Room by Edward Murphy, chairperson.

The members reviewed the twenty-five Request For Proposals to fund a holiday food program, which MCAA received from community agencies in Minneapolis.

The members decided on the funding criteria as follows:

- a) Fund no more than \$5,000 for each agency.
- b) Cost should not be more than \$25 per household served.
- c) Program should have a track record of really serving only low-income people.
- d) Priority to be given programs which will serve more households with the lowest cost.
- e) Programs will serve the different Minneapolis geographic boundaries - Downtown, North, South, Southeast, Northeast, and City-wide.

After discussing all the proposals using the above criteria. The following motion was made by Catherine Hurd, seconded by Marvin Kuhlman:

That the Community Programs Committee recommend to the Advisory Board funding for the following community agencies for the Holiday Food Program:

North East Emergency Depot	\$5,000
Urban Communities Association	\$4,125
Catholic Charities	\$4,000
Glendale Residents Action Council	\$4,926
Sabathani Community Center	\$5,000
Sumner Olson Residents Council	\$5,000
Center For Asians And Pacific Islanders	\$2,000
American Indian OIC	\$5,000
Pillsbury United Neighborhood	\$3,000
House of Charity	\$4,531
Phi Beta Sigma Fraternity	\$2,418
Disciples Ministry	\$5,000
TOTAL	\$50,000

MOTION CARRIED.

KWANZAA 1990 Calendar

Habari-Gani

UMOJA (Unity)

December 26, 1990

- Watu-Wakazi (Black Male Support Group)
Ruth Hawkins YWCA
1801 James Avenue North
825-5447
6:30 p.m.

KUJICHAGULIA (Self-Determination)

December 27, 1990

- PePo Alfajiri
The Crossings
1150 Hennepin
6:30 p.m.
 - * Swim Party
 - * Poetry Reading

UJIMA (Collective Work and Responsibility)

December 28, 1990

- ASILI/A-Khepran Society
The City, Inc.
1315 12th Avenue North
 - * Naming Ceremony
 - * Robing Ceremony
 - * AAA Play6:30 p.m.

UJAMAA (Cooperative Economics)

December 29, 1990

- Kwanzaa Festival
Minneapolis Central Gym
3450 4th Avenue South
12:00 p.m. (Noon)
 - * Story Telling
 - * African Dance Performances
 - * Black Economics Speakers
 - * African Vendors
(Art, T-Shirts, Clothes, Jewelry, Books
and other artifacts)

UJAMAA (Cooperative Economics) Continued

December 29, 1990

- Kwanzaa Dance (Phi Beta Sigma)
West River Point
West River & Plymouth Avenue
8:00 p.m. - 1:00 a.m.
 - * Live Band (Smoke)
 - * Hors D'oeuvresCost: \$ 8.00

NIA (Purpose)

December 30, 1990

- Malcolm X College
1920 11th Avenue South
Minneapolis, MN
 - * Poetry Reading6:30 p.m.

KUUMBA (Creativity)

December 31, 1990

- Pillsbury United Oak Park Neighborhood
 - * Story Telling
 - * African Dance
 - * Poetry Reading6:30 p.m.

IMANI (Faith)

January 1, 1991

Celebrate at home.

For more information call:

377-7000 or 871-5915

Sponsors:

- Phi Beta Sigma Fraternity, Inc. (ΦΒΣ)
- Minneapolis Arts Commission

Phi Beta Sigma Fraternity, Inc.

in cooperation with

**Minneapolis Arts Commission &
Minneapolis Action Agency**

Announces

Kwanzaa Festival 1990

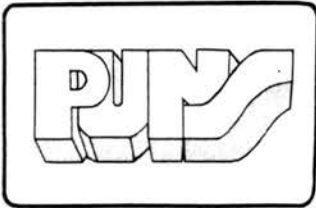
- African Story Telling
- African Dance Performances
- Speakers on Black Economics
- Vendors of African Art, Books & Clothes

**Saturday, December 29, 1990
Minneapolis Central Gym
3450-4th Avenue South**

For More Information, call:

871-5915

This program is financially sponsored by the Minneapolis Action Agency



Pillbury United Neighborhood Services, Inc.

ADMINISTRATION • 3501 Chicago Avenue South • Minneapolis, Minnesota 55407 • (612) 827-5814
EXECUTIVE OFFICES • 2323 - 11th Avenue South • Minneapolis, Minnesota 55404 • (612) 870-9518

NEIGHBORHOOD CENTERS:

CAMDEN NEIGHBORHOOD CENTER
529-9231

CURRIE NEIGHBORHOOD CENTER
338-5282

FAMILY ADVOCATE NETWORK SYSTEM
Phillips Community Center
870-9619

NEW GENERATION CAMPING
Waite House
721-1681

OAK PARK NEIGHBORHOOD CENTER
377-7000

PILLSBURY HOUSE
824-0708

UNITY NEIGHBORHOOD CENTER
529-9267

WAITE HOUSE
721-1681

AFFILIATED ORGANIZATIONS:

LITTLE PEOPLE DAY CARE CENTER, INC.
522-4691

GLENWOOD LYNDALE COMMUNITY CENTER, INC.
342-1500

BOARD OF DIRECTORS:

DAVID M. LILLY JR.*
Chair

LEVI L. BRADY*
Vice Chair

LEE D. VALENTA*
Treasurer

GARY E. BALK*
Secretary

NANCY A. VETSCHER*
Immediate Past Chair

David R. Bergerson*
Elizabeth Connolly
Steve Couture

Kate Donaldson*
Lynette Fraction

Bernard Glover
Norman Grant Sr.

William E. Harder
Jennie Hutcheson

Carol Johnson
Jeanette Johnson

Kenneth W. Lewis*
Barbara L. Lyke

Robert Paulson Jr.
Julien Phillips

Robert M. Schmitz*
James P. Sisson*

Eleanor Crosby Winston*
ANTHONY R. WAGNER*
President

LEE ANN MURPHY*
Executive Director

*Member Executive Committee

December 15, 1990

Dear Minister:

The Kwanzaa committee is asking your assistance in announcing our Kwanzaa program. Kwanzaa is a celebration of the first fruits and a reaffirmation of our African-American heritage.

Please include the Kwanzaa calendar (see insert) into your church bulletin and also announce the program during your announcement period.

If you have any questions, please call the Oak Park Neighborhood Center at 377-7000 or Rex Marshall at 871-5915.

Thank you in advance for your cooperation.

Sincerely,

Rex Marshall
Maxie Wyser

Insert

VGS/vgs



ZETA NU SIGMA
CHAPTER

P.O. BOX 263
MPLS., MN 55440

Dear Participant:

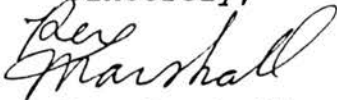
Thank you for agreeing to participate in our annual African-American Kwanzaa Holiday celebration for 1990-91. Kwanzaa celebration is being sponsored jointly by Phi Beta Sigma Fraternity, Inc. (P.B.S.) and Oak Park Neighborhood Center.

Kwanzaa is observed from December 26th through January 1st. You will perform on December 29th. The day will start at 12:00 noon and end at 6:00 P.M. in the Old Central High School Gymnasium, 3440 4th Avenue South, Minneapolis, Mn. You will be notified of the time you are required to be there at a later date. Your participation will be a key part in celebrating our unique holiday. Thank you.

WHAT KWANZAA MEANS TO AFRICAN-AMERICAN PEOPLE

Kwanzaa is a unique African-American Holiday that pays tribute to the rich cultural roots of Americans of African ancestry. It is neither a religious, political, nor heroic holiday but rather a cultural holiday.

Sincerely,



Rex Marshall

P.S. If you have any questions call 377-7000 (Maxie) Oak Park Neighborhood Center or 871-5915 (Rex) Phi Beta Sigma Fraternity, Inc.

Kwanzaa Festival 1990

4. **UJAMAA (Cooperative Economics)**
To build and maintain our own stores, shops and other businesses and to profit from them together.

Sponsors:

- Phi Beta Sigma Fraternity, Inc. (ΦΒΣ)
- Minneapolis Arts Commission

This program is financially sponsored by the Minneapolis Action Agencies



Phi Beta Sigma Fraternity, Inc.
Founded in 1914 at Howard University in Washington D.C. This predominately Black fraternity has a total membership of over 65,000 men nationally and internationally. Phi Beta Sigma is committed to academic excellence. The men of Sigma awards an annual scholarship to young men who are serious about achieving a college degree. The Sigma commitment to the community has been displayed by the many programs and activities in business and social action as well.



- African Story Telling
- African Dance Performances
- Speakers on Black Economics
- Vendors of African Art, Books & Clothes

Saturday, December 29, 1990
Minneapolis Central Gym
3450-4th Avenue South



PHI BETA SIGMA
FRATERNITY, INC.
ZI TA NU SIGMA CHAPTER

Kwanzaa Festival 1990

UJAMAA (Cooperative Economics)
*To build and maintain our own stores, shops and other
businesses and to profit from them together.*

In Appreciation of

NGUZO



SABA



OAK PARK
NEIGHBORHOOD CENTER

CHAIRMAN

12/29/90
DATE

ΦΒΣ

PHI BETA SIGMA
FRATERNITY, INC.



Kwanzaa organizer
extraordinaire, Bro. Darwin
Marshall, pauses to delight
in the festivities.

Is this a new dance?



Honey ... These young folks
are finally coming around!
and they can cook, too.



Ladies perform a
skit celebrating
Kwanza.



Youth choir sings
at Zeta Nu Sigma's
first annual Kwanza
Celebration.



Bros Mitchell, Martin, Hutt....



Anderson, Wulf, and Moore - Stike a Pose.

PROGRAM: BLACK HISTORY MONTH
DATE: February 10 and 20, 1990
LOCATION: Hennepin County Juvenile Center
COMMITTEE
CHAIR: Brother Darwin Marshall

PROGRAM OBJECTIVES:

- 1) Enrich the participants with a glimpse of their culture and heritage.
- 2) Moderate and foster a dialogue among the participants to stimulate interest, questions, and divergent points of view of Black history in America.
- 3) Sponsor a Chapter program that previously had been a county sponsored event.
- 4) To present strong Black adult male role models for positive imaging.

COMMENTS:

The Black History Month Program was attended by approximately 75 male and female detainees of Black, White, Asian, and Hispanic descent. The presentation covered historical documentation spanning from the Great African Kings and Queens through slavery, reconstruction, Jim Crow years, Civil Rights, and the current struggles of today. Reactions from the participants ranged from blatant hostility to a burning desire to know more about "from whence we have come".

RESULTS:

The discussions served to tap the tip of the iceberg of a past rich in hope for a desperate group of juveniles. The cost to incarcerate our youth far exceeds the cost to educate. Statistics prove that a direct correlation exists between the "Lack of Education" and the "Level of Black Incarceration". Without a sense of the past, there can be no strong foundation for the future. To this end, the men at Sigma dedicate our services to the Black Youth of America whose minds are chained in ignorance and whose confidence and pride lie shackled and bound.

Culture For Service - Service For Humanity

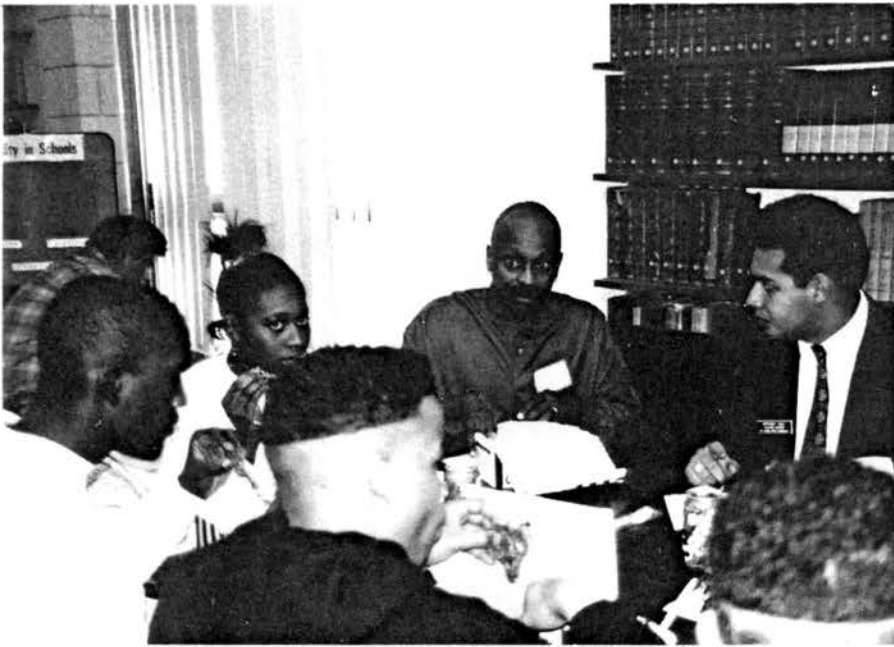
EDUCATION



Zeta Nu Sigma
Annual Career Fair
for St. Paul High
School students.



Crowd shows its
approval!



WOW !!!!
What a nice cut !!

Bro. Robinson listens
carefully with excitement.



This chicken is so good!



Bro. Lee Butcher keeps on the look out while Bro. J. Cunningham takes a second box of chicken at the Career Awareness Program.



"If they always bring this much food, I hope the Sigma's come back every week"!



Bro. Chris McKinnie mediates on a question from the students.

Students listen intently to career perspectives



Judge Tanya Brainsford encourages other women to pursue the law profession.

ZETA NU SIGMA 1990 CHAPTER REPORT

PROGRAM: CAREER AWARENESS 1990
DATE: December 12, 1990
LOCATION: Martin Luther King, Hallie Q. Brown Center
COMMITTEE
CHAIR: Brother George Robinson

PROGRAM OBJECTIVES:

- 1) Provide inner city minority students an opportunity to hear and learn more about career choices and the commitment required to achieve career success.
- 2) Provide a Forum through which students are able to interact with local minority professionals.

COMMENTS:

The Career Awareness Program provided over 100 students with an opportunity to learn more about careers in the areas of Business, Language, Science, Technology, Communications, Entertainment, and Health/Human Services. Each student had an opportunity to be involved in two panel discussions. They also were able to ask specific career questions after each session.

RESULTS:

Both students and participating panelists commented on the rewarding satisfaction they acquired through the involvement with this Program.

Culture For Service - Service For Humanity

SPONSORING ORGANIZATIONS

Phi Beta Sigma Fraternity, Inc.

Founded in 1914 at Howard University in Washington, D.C., this predominantly African American fraternity has a total membership of over 65,000 men nationally and internationally. Phi Beta Sigma is committed to Social Action, Community Responsibility, Business and Education.

Central Minority Education Program (CMEP)

CMEP is a program designed to improve the educational and career opportunities for African American and other minority students at Saint Paul Central High School.

Saint Cloud State University (S.C.S.U.)

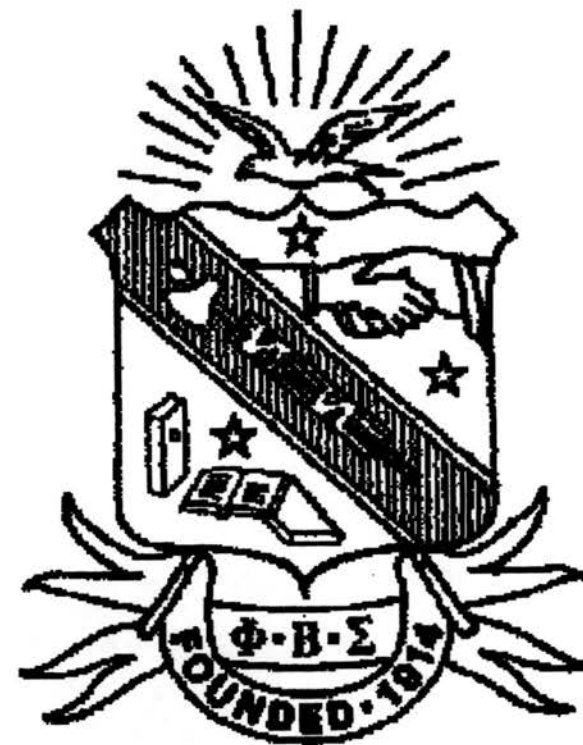
S.C.S.U. is Minnesota's largest State University. Located on the bank of the Mississippi River about 60 miles west of the Twin Cities, S.C.S.U. is committed to providing a quality education for all persons. S.C.S.U. has demonstrated its commitment to the minority community by providing scholarships, leadership and support.

Hallie Q. Brown, Inc. (HQB)

Operated from the Martin Luther King, Jr. Center, HQB is one of the pioneer social work community centers in the African American community. A wide variety of programs are offered through the center.

CAREER AWARENESS

1990



Sponsored by Phi Beta Sigma Fraternity, Inc.

PROGRAM

Assembly	
Welcome	9:15 A.M.
INROADS	
SCSU	
Logistics	
Session I	9:50 A.M.
Session II	10:40 A.M.
Lunch	11:30 A.M.
Close	11:35 A.M.

SESSION LOCATION

Business/Law	Theater
Science/Technology	Club Room B
Communications/ Entertainment	Library
Health/Human Services	Club Room C

PLANNING COMMITTEE

George Robinson
Director of Education, Phi Beta Sigma Fraternity, Inc.

Katie McWatt
Staff, Central Minority Education Program, St. Paul
Central High School

Mildred Brunson
Staff, Hallie Q. Brown

* Lunch provided by Saint Cloud State University

PANELS

Business/Law

- Eileen Irving-Wider
Insurance Supervisor
Minnesota Mutual
- James Cunningham (Σ)
Attorney
Rider, Bennett, Egan
& Arundel

Science/Technology

- Tonya Griffin
Engineer
3M
- Carolyn Roberson
Computer Programmer
Minnesota Mutual

Comm./Entertainment

- Tim Wilson (Σ)
Record Producer
Wide Angle Records
- Jackie Underwood
Advertising Specialist
Star Tribune

Health/Human Services

- Percy Wade (Σ)
Youth Director
YMCA
- Capt. Chris McKinnie (Σ)
Health Services Administrator
USAFR

(Hillary Thomas)

- Gary Speese
Marketing
IBM
- Gaynelle Brown
Accountant
3M

(Edward Robertson)

- Robert Jones (Σ)
Plant Physiologist
University of Minnesota
- Ernest E. Sergeant Jr.
Physist
3M

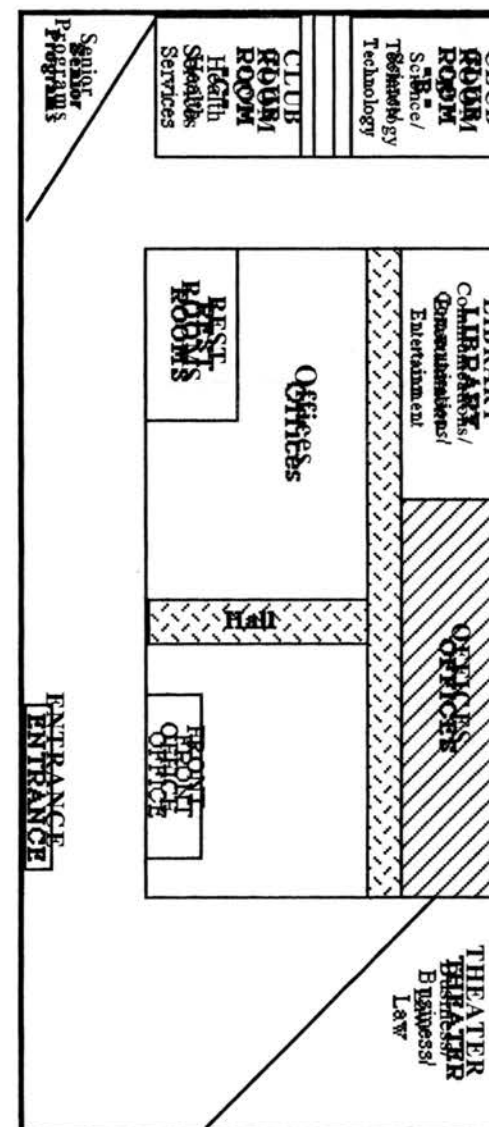
(McClinton Webb)

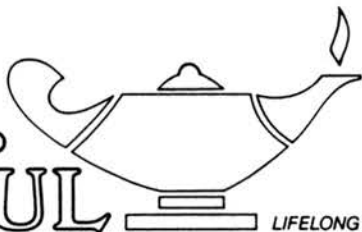
- Louis Porter (Σ)
Reporter
St. Paul Pioneer Press
- Seitu Jones
Visual Artist
Walker Art Center

(James A. Randle)

- Denise Simmons
Teacher
Highland Park Jr. High
- Vernon Simmons
Police Officer
St. Paul Police Dept.

Dr. Martin Luther King Jr. Center





April, 1991

Phi Beta Sigma Fraternity
George Robinson, Education Director
St. Paul, MN 55104

Dear Mr Robinson,

This is to thank you and the excellent young men of your Fraternity for their outstanding work to provide a valuable workshop on possible careers and career planning for our students.

The opportunity presented for our students was enhanced by the excellent caliber of speakers, the majority of whom were the men of Phi Beta Sigma. The career information is crucial, but the inspiration gained from the presentors also means much to the students. Many persons talk about helping our youth, but your organization produces for the betterment of the future.

The Central Minority Education Program looks forward to working with Phi Beta Sigma Fraternity in the future and again says an appreciative thank you.

Sincerely,

Mrs Katie McWatt, Coordinator
CMEP

cc Cathy Pinket

kmcw/le



10+10+

December 1990

CAREER FAIR EVALUATION°

The Career Fair helped me to become more familiar with different careers.

strongly agree

agree

disagree

uncertain

As a result of this program I will be better able to plan for my high school courses.

strongly agree

agree

disagree

uncertain

What sessions did you attend ?

Business/Law

Communications/Entertainment

Health/Human Services

Science/Engineering

Would you like more information on career planning ? Yes No

Have you attended other career information sessions ? NO

Additional Comments :

I CAME TO THE PROGRAM NOT
BEING INTERESTED IN MARKETING
AND CAME OUT OF IT WITH
A GOOD CAREER IN MIND

10+10+

December 1990

CAREER FAIR EVALUATION°

The Career Fair helped me to become more familiar with different careers.

strongly agree agree disagree uncertain

As a result of this program I will be better able to plan for my high school courses.

strongly agree agree disagree uncertain

What sessions did you attend ?

Business/Law

Communications/Entertainment

Health/Human Services

Science/Engineering

Would you like more information on career planning ? Yes No

Have you attended other career information sessions ? No

Additional Comments :

I really think the session on Health/Human Services was very informational. It made me well aware of the many jobs open in this field.

December 7, 1990

Mr. Anthony Vigil
Minority Affairs
St. Cloud State University
115 Administrative Services Building
720 South Fourth Avenue
St. Cloud, MN 56301

RE: PHI BETA SIGMA FRATERNITY INC. CAREER AWARENESS SEMINAR

Dear Mr. Vigil:

I would like to thank St. Cloud State in advance for your continued support with the Phi Beta Sigma Fraternity education career fair. This letter will provide more specific information regarding this event.

The career fair will be held on December 12 from 9 a.m. to 11:30 a.m. at the Martin Luther King Jr. Center in St. Paul, Minnesota. I have enclosed a map for your travel reference. As we discussed, I would like for you or a designated representative from St. Cloud State to deliver a five to seven minute speech to our general audience regarding the education programs provided by your school. During lunch, the students will be given an opportunity to direct more one-on-one questions to you; therefore, setting up a booth would be a plus. If you are able to distribute any souvenirs, I am sure the students would enjoy the gifts.

The career fair will consist of 125 ninth and tenth grade students from two area inner city high schools. Each student will have an opportunity to participate in two panel discussions. The career discussions are divided into four main categories: Business/Law, Communication/Entertainment, Health/Human Services, and Science/Technology. My objective is to provide these students with an opportunity to hear and learn more about career choices and the commitment required to meet their career objectives. Each career session will consist of four panelists from various careers.

For the past few years, St. Cloud State has taken the ownership of underwriting the lunch meal for our students. This year, lunch will be catered by Kentucky Fried Chicken. I expect approximately 125 students and 40 adults. Therefore, the cost of lunch should not exceed \$600. Considering that Phi Beta Sigma is a non-profit organization, we would be unable to provide this opportunity for the students without your helpful assistance.

Mr. Anthony Vigil
December 7, 1990
Page 2

Phi Beta Sigma Fraternity is one of four predominately African American Greek letter fraternities in the nation. The Twin Cities chapter has been a part of the Minnesota community since 1977. Our organization consists of approximately 77 college degreed/professional men. Our emphasis has always been placed on promoting brotherhood, scholarship, and service. We have had a positive relationship in working with St. Cloud State for the past five years, and I look forward to many more.

If you have any additional questions prior to December 12, please give me a call at 298-3548 any time between 8:30 a.m. and 5:30 p.m.

Sincerely,

George Robinson

George Robinson
Director of Education
Phi Beta Sigma Fraternity Inc.

GR:sk

Encl.

ZETA NU SIGMA 1990 CHAPTER REPORT

PROGRAM: MINNEAPOLIS CAREER/JOB FAIR
DATE: April 25, 1990
LOCATION: Minneapolis Central Community Gymnasium

PROGRAM OBJECTIVES:

- 1) To extend the sphere of influence wielded by Phi Beta Sigma and its success with the Annual Career Fair in the St. Paul School system to students in the Minneapolis School system.
- 2) Provide the students with first hand accounts of what it takes to be successful in the educational and corporate worlds by minority professionals and role models.
- 3) To address the issue of minority teen unemployment by inviting corporations that provide summer job programs.

COMMENTS:

Again, the Career Fair concept was heralded as a tremendous success. The program consisted of 9th and 10th grade students from the Minneapolis High School of Washburn, Patrick Henry, and Roosevelt; minority professionals in the areas of Business, Human Services, Science and Technology, Health, and Communications; Corporate job providers including Allstate Insurance, Pillsbury Co., McDonalds, Blaisdell Summer Youth Program, etc., college/jr. college administrators from St. Cloud State University and Lakewood Junior College, and a host of invited guests including Mrs. Sandy Harp of the Minneapolis School Board.

RESULTS:

The enthusiasm shown by the students can only be an indicator that a higher level of awareness has been attained. In addition, over 80 job slots were made available by corporate representatives.

PHI BETA SIGMA FRATERNITY, INC.

MINNEAPOLIS CAREER FAIR

April 25, 1990

Minneapolis Central High School

PROGRAM

- 9:00 - 9:10 Introduction (Rex Marsall)
- 9:15 - 9:35 Keynote Speaker
(Charlene Coles Pilot City Regional Center)
- 9:35 - 9:40 Orientation
(Cindy Phillips, Central Gym)
- 9:40 - 10:35 Session I & 1A
- 10:40 - 11:00 Session II
(Milt Owens, Mpls. Chamber of Commerce)
- 11:05 - 11:45 Session III (Job Rush)

PLANNING COMMITTEE

- Rex Marshall, Chair
- Phil Walker
- Cindy Phillips
- Fred Meyer, Washburn
- Dwane Martin
- Mark Beecham
- John Johnson, Henry H.S.
- Dwayne Dull, Roosevelt H.S.

CAREER DAY ASSISTANTS

- Verna Simmons
- Hugh Cooper
- Jeff Townsend
- Darrell Moore
- Sandy Ashley

PANELIST

Business

- Pam Wilkins
FMC
- Edwin O'Berry LLoyd
Entrepreneur

Human Services

- Henry Scurry
Mpls. Police Department
- Rich Campbell
Mpls. Fire Department

Science & Technology

- Gerald Christpher
J. Tayson & Asso.
- Herbert McGrew
3M

Health Careers

- Stella Thomas
Mpls. W.I.C.
- Dr. Robert Jones
University of Minnesota

Communications

- Jackie Underwood
Mpls. Star & Tribune
- Ray Richardson
Saint Paul Pioneer Press

College/Junior College

- Willie Nesbit
Lakewood Community College
- Robert Broadus
Saint Cloud State University
- Cecil Stockdale
Saint Cloud State University

CORPORATIONS

- Allstate Insurance
- Pillsbury Company
- McDonalds
- Blaisdell Summer Youth Program
- Best Buy Superstores
- Pizza Hut
- Star & Tribune
- Mpls. Youth Program

INVITED GUEST

David Pettiford, I.B.C.A.

Stanley Hatcher, Education Talent Search
Otis Vanders, Oakpark Hts. Corrections
Wallace Hill, Preferable Percussions Inc.
Sandy Harp, Mpls. School Board

ZETA NU SIGMA 1990 CHAPTER REPORT

PROGRAM: MISS BLACK MINNESOTA PAGEANT
Mini Career Fair

DATE: April 28, 1990

LOCATION: Oak Park Community Center

COMMITTEE
CHAIR: Brother Calvin Simmons

PROGRAM OBJECTIVES:

- 1) To provide contestants with exposure to minority professionals and strong role models currently engaged in occupational categories in which an interest has been expressed.
- 2) To provide career contacts for the contestants that could lead to a future career opportunity.
- 3) To provide assistance to contestants in completing workshop requirements vital to their bid for the crown.

COMMENTS:

We have received numerous accolades congratulating Phi Beta Sigma for an outstanding job in not only the coordination and participation by Sigma professionals in the Fair but also for our continued unyielding support of the Miss Black Minnesota Pageant. The Program was an overwhelming success with 100% attendance by panel presenters.

RESULTS:

The Fair sparked an air of confidence in everyone who attended. The dominant message of the event can be summed up in the words of panel presenter and assistant City Attorney, Patti Cromley who said, "Success Is Not Obtained By External Validation, Rather By Internal Affirmation."

ZETA NU SIGMA 1990 CHAPTER REPORT

MISS BLACK MINNESOTA PAGEANT CAREER FAIR AGENDA

1. Introduction
Calvin Simmons
Vice President
Phi Beta Sigma Fraternity, Inc.
2. Communications
Lauren Green
News Correspondent
Channel 5 Eyewitness News
3. Law
Patti Cromley
Assistant City Attorney
Minneapolis City Attorney's Office
4. Science
Dr. Robert Jones (PBS)
Research
University Of Minnesota
5. Engineering
Leondias Butcher (PBS)
Director-Manufacturing Operations
Medtronic
6. Accounting
Gaynelle Brown
Senior Product Accountant
3M Company
7. Entertainment
Yolande Bruce
Vocal Artist
Moore By Four
8. Human Services
Carolyn Miller
Manager - Work Force Diversity
Medtronic
9. Questions And Answers - Adjourn

ZETA NU SIGMA 1990 CHAPTER REPORT

SPECIAL PROGRAMS

ZETA NU SIGMA 1990 CHAPTER REPORT

PROGRAM: 1990 FOUNDERS' DAY PROGRAM

DATE: January 21, 1990

LOCATION: Sheraton Park Place, St. Louis Park, Minnesota

COMMITTEE

CHAIR: Brother Joseph Richburg

PROGRAM OBJECTIVES:

- 1) To join together for the annual commemoration and rededication to the ideals of our Founding Fathers.
- 2) To recognize the outstanding achievement of key individuals in the areas of Social Action, Bigger and Better Business, Education, and leadership.
- 3) To recognize the contributions made by the men of Zeta Nu Sigma Chapter.
- 4) To inaugurate the 1990 Chapter Administration.

COMMENTS:

The 1990 Founders' Day Program has proven to be the most profitable to date considering the overall objective of "Chapter Self Indulgence". The keynote speaker was the eloquent and dynamic Alfred Babbington-Johnson. His remarks held steadfast to the program theme, "Pursuing New Horizons". He urged each individual to date to accept the challenges of the 1990's and beyond by keeping the adage, "If it is to be, it is up to me". On a lighter note, the D.J. providing the entertainment was fantastic! He thrilled and chilled with cool jazz, cold blues, hot house rock, the soft and the slow, and the hard and the fast.

RESULTS:

The challenge of the 90's and beyond to the third millenium is upon us. The men of Sigma are here to accept the challenge ... come what may.

Culture For Service - Service For Humanity

ZETA NU SIGMA 1990 CHAPTER REPORT

1990 FOUNDERS DAY PROGRAM

P & L

3/1/90

<u>EXPENSES</u>	<u>PROJECTED</u>	<u>ACTUAL</u>
Dinner Tickets Printing	80	13
Ball Invitations	180	126
Plaques (5 Award x \$30)	150	
4 Awards + President's Award		179
Dinners (140 x \$16.00)	2240	
(116 x \$15.25)		1769
Certificates (10)	20	0
Trophy (Sigma Of The Year)	30	
(Sigma Of The Year + Undergraduate)		62
Carnations (40 For Brothers)	50	85
Entertainment	200	150
Ball Booklet Printing	400	279
Church Donation	50	0
After Party (Chips, Pop, etc.)	50	31
Postage	50	43
Flowers For Hostesses & Guest	36	10
Photographer	0	45
Typing	0	8
	<hr/> 3536	<hr/> 2800

REVENUE

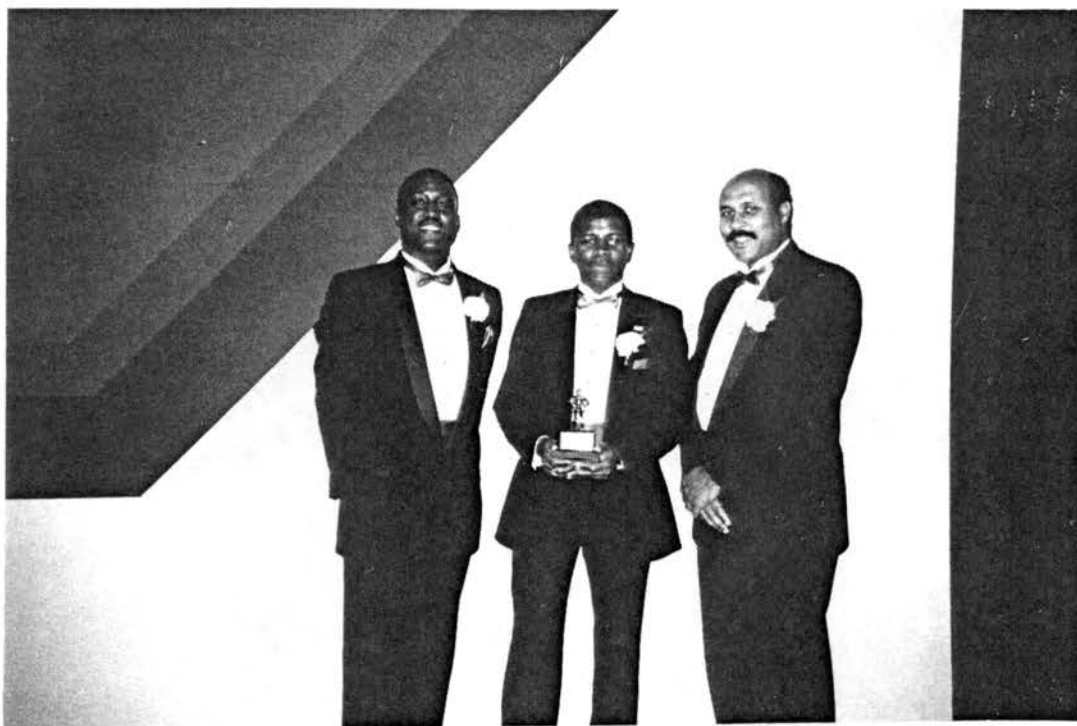
Ticket Sales (138 x \$20)	2760	
(Collected as of 2/28/90 102 x \$20)		2040
Ball Booklet Ads	1200	
(Collected As of 2/28/90		1215
Donations	0	5

	<hr/> 3960	<hr/> 3260
<u>PROFIT</u>	424	460

OUTSTANDING

7 Tickets (\$15.00 Each)	\$105
Invoiced Ads	\$155

Culture For Service - Service For Humanity



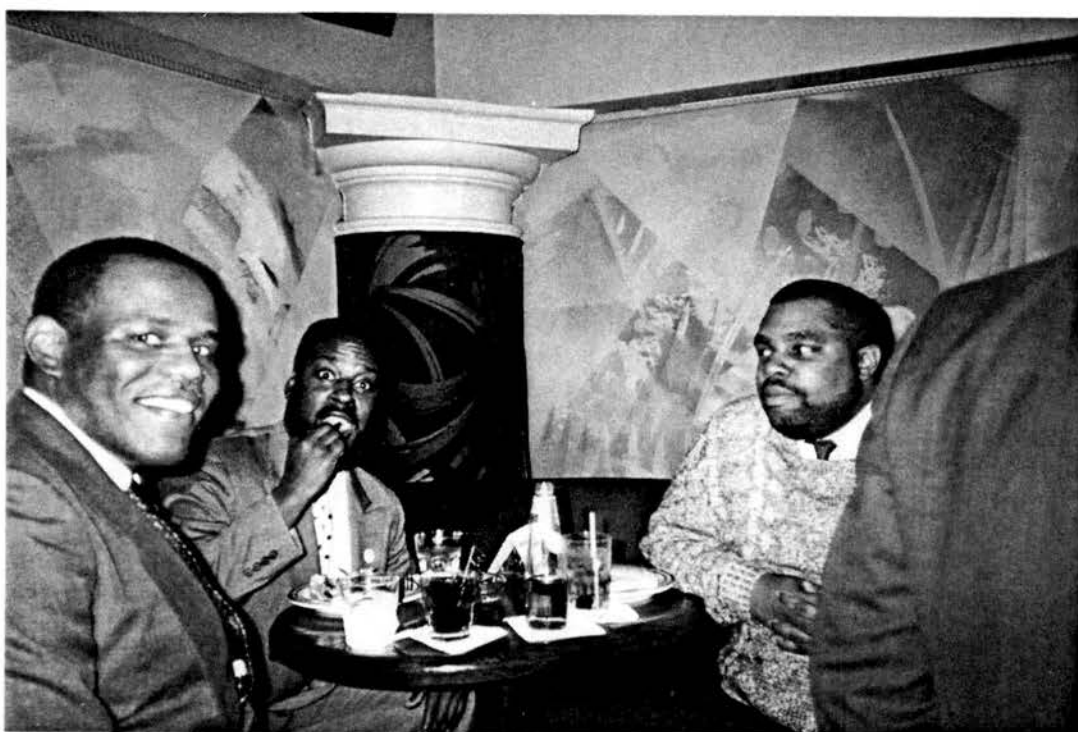
Sigma Man of The Year, Dwane Martin takes center stage.



Bros Lloyd and Simmons peek in on the after hours festivities.



Brothers celebrated January 9, with a Happy Hour at a club owned by Walter Payton.





Members of the local Zeta Phi Beta Sorrity gave their support to Founders Day 1991.





Founders Day Happy attracts many Brothers of Zeta Nu Sigma Chapter.



ZETA NU SIGMA 1990 CHAPTER REPORT

PROGRAM: MEMBERSHIP DRIVE

DATE: October 1, 1990 - December 30, 1990

LOCATION: Zeta Nu Sigma Membership

COMMITTEE

CHAIR: Brother Keith Anderson

PROGRAM OBJECTIVES:

- 1) Increase chapter financial membership from 13 to 40 for 1991.
- 2) Promote greater chapter involvement from previously inactive brothers.

COMMENTS:

Increasing the fraternity's financial membership has been difficult for the Chapter. Our attempt this year was to blitz the membership with letters and phone calls on how to become financial and the major importance it represents for the Chapter and Fraternity as a whole.

RESULTS:

- Increased financial membership to 26 brothers.
- Renewed the participation of brothers who had been previously inactive.
- Created a committee to phone brothers and to follow up with them on becoming financial members in 1991.

Culture For Service - Service For Humanity

ΦΒΣ

1991 MEMBERSHIP DRIVE "COMMITMENT TO THE FUTURE"

RENEW YOUR MEMBERSHIP TO INSURE THE EXPANSION OF SIGMA
AND OUR CONTINUED SERVICE TO THE COMMUNITY.

MEMBERSHIP IN 1991 MEANS:

- WE CAN HOST A SUCCESSFUL GREAT LAKES REGIONAL
CONFERENCE IN MAY '91
- THAT OUR CONCERNS WILL BE HEARD AT THE NATIONAL
CONCLAVE IN AUGUST '91
- STRONGER AND IMPROVED LOCAL PROGRAMS THROUGHOUT
THE YEAR.

MAKE YOUR COMMITMENT TO THE FUTURE, TODAY!

1991 MEMBERSHIP COST IS \$132.50

(MEMBERSHIP SATISFIES DUES FOR THE NATIONAL, REGIONAL, AND LOCAL
BODIES)

STAKE YOUR INTEREST IN THE FUTURE BY PAYING \$132.50* ALL AT
ONE TIME OR BY MAKING FOUR(4) INSTALLMENTS OF \$33.15**
INSTALLMENTS BEGIN OCTOBER 15, 1990 AND END JANUARY 15,
1991. EACH INSTALLMENT IS DUE THE FIFTEENTH (15) OF THE
MONTH.

- * -LUMP SUM PAYMENT OF \$132.50 SHOULD BE MADE BY 12/15/90.
- ** -THE FOURTH INSTALLMENT IS REDUCED TO \$33.05.

SEND YOUR PAYMENTS TO:

TREASURER

PHI BETA SIGMA FRATERNITY, INC.
ZETA NU SIGMA CHAPTER
9370 RANCHVIEW LANE
MAPLE GROVE, MN. 55369

MAKE YOUR CHECKS PAYABLE TO PHI BETA SIGMA FRATERNITY, INC.

FOR FURTHER INFORMATION CONTACT :

BRO. KEITH ANDERSON - MEMBERSHIP DRIVE, CHAIRMAN
(H) 825-3268 OR (W) 623-7544

IMAGES AND IDEAS TO GET A CROSS ON BENEFITS OF PAYING DUES

CHAPTER BENEFITS:

- IT SHOWS YOUR LOVE AND CARE FOR YOUR FRATERNITY.
- IT HELPS US HOST THE '91 GREAT LAKES REGIONAL CONFERENCE
- IT PROVIDES US WITH THE FUNDS TO HOST THE REGIONAL
- PROVIDES THE CHAPTER WITH A STRONG VOICE ON THE NATIONAL AND REGIONAL LEVELS.
- MAKES US LOOK STRONG ENOUGH TO HOST NATIONAL CONCLAVE IN 1993.
- DEMONSTRATES TO OTHER CHAPTERS AND BROTHERS THAT THIS IS GOOD PLACE TO COME.
- YOUR ALLOWING ZNE TO REMAIN A STRONG IMAGE IN THIS COMMUNITY.
- PERMITS CHAPTER TO HAVE SOLID BASE TO WORK ON SOCIAL ACTION, EDUCATION, AND BIGGER AND BETTER BUSINESS PROGRAMS.
- IT DEMONSTRATES TO UNDERGRADUATE BROTHERS THAT THE GRADUATE CHAPTER IS A VIABLE STEPPING STONE IN SIGMA.

PERSONAL BENEFITS :

- SETS EXAMPLE FOR YOUNGER BROTHERS THAT IS IMPORTANT FUNCTION IN MAKING SIGMA BETTER.
- CONVINCES OTHER BROTHERS THAT ITS IMPORTANT. THAT YOU CARE AND ARE CONCERNED ABOUT TEH DEVELOPMENT OF FRAT. AND CHAPTER.
- GIVES YOU CONFIDENCE THAT YOU ARE HELPING THE CHAPTER AND FRATERNITY THE BEST WAY POSSIBLE.
- WHEN YOU ARE FINANCIAL YOU TALK MORE ABOUT FRAT TO OUTSIDERS BECAUSE YOU FEEL LIKE A ACTIVE MEMBER.
- FINANCIAL BROTHERS CONVEY STRONG, POSITIVE, AND CLEAR MESSAGES AND IMAGES OF SIGMA TO THOSE AROUND THEM. THAT TYPE OF ASSOCIATION IS OF INVALUABLE HELP TO FRAT.
- YOUR LACK OF MEMBERSHIP SENDS BAD SIGNAL TO UNDERGRADS AND POOR IMAGE TO COMMUNITY. THESE IMAGES MAY PREVENT US FROM OUR MISSION OF BRINGING IN AND RETAINING NEW MEMBERSHIP.
- PHI BETA SIGMA IS A FRATERNITY, AND FRATERNITY = BROTHERHOOD. ITS THE BROTHERHOOD THAT MAKES THIS ORGANIZATION EXIST. SIGMA ALWAYS HAS NEEDED AND WILL CONTINUE TO NEED YOUR SUPPORT OR IT WILL VANISH AND THERE ARE TOO MANY VANISHING BLACK INSTITUTIONS.

ZETA NU SIGMA 1990 CHAPTER REPORT

PROGRAM: 1990 SIGMA SUMMER SIZZLER PARTY &
STEPDOWN EXHIBITION

DATE: Friday, July 6th, 1990

LOCATION: West River Point Banquet Facility,
A Minority Owned Business
Minneapolis, Minnesota

PROGRAM OBJECTIVES:

- 1) Continue to increase the community's awareness of Phi Beta Sigma Fraternity, Inc.
- 2) Continue to develop the "Sigma Synergism" created by the 1990 Spring Meltdown Party.
- 3) Test Zeta Nu's ability to draw patrons at a slightly inflated admissions fee without losing significant monies or patron support.
- 4) Set a standard for all the other local chapters on how to throw a successful function.
- 5) Increase the Chapter's patron database by 5%.

COMMENTS:

The evening was a success. The men of Zeta Nu Sigma were at yet another level of sophistication. As the uptempo music of our Brother Timothy Wilson (Pi Eta Chapter) jam packed the dance floor, the men of Sigma were the perfect host.

Let us not forget the climax of the evening as presented by the Sigma Sizzling Steppers who dazzled us not only with their hands and feet but with their canes as well. These brothers really did a fantastic job! They started at midnight and stomped the house for 25 minutes. You could see the Kappas, Alphas, and the Omegas had their camcorders running. I'll bet we'll see our own steps this fall at the next citywide stepshow.

As chairman of this event I was curious as to how others perceived the evening's success. Through an informal survey of patrons, I can say without hesitation that everyone at the event had a "Sizzling" good time. They especially liked the Stepdown Exhibition.

Culture For Service - Service For Humanity

ZETA NU SIGMA 1990 CHAPTER REPORT

RESULTS OF OBJECTIVES:

- 1) We met our objective. The community is well aware that the Sigma's in this town are "Strictly Business". We utilized direct mail marketing strategies and mailed to approximately 550 existing patrons, community radio and personal invitation by Brothers.
2. We exceeded our objective. You could look at the dance floor and see our patrons are ready for our next event.
3. We met our objective. We were able to draw a significant audience of approximately 225+ people. This event broke even. Based on our outlined objectives and strategy, we consider this to be a success.
4. We exceeded our objective. We set standards on how to draw and entertain a crowd. Other local fraternity's graduate chapters don't step at their own parties, let alone serve as hosts for the event. We really did a good job here.
5. We exceeded our objective. We increased the database by 7.5%.



WEST RIVER POINT

1315 West River Road North
Minneapolis, MN 55411
612/521-3419

Date June 7, 1990

Prospect _____

Reserved x

RESERVATION ORDER

Function: Fraternity Party

Name: Phi Beta Sigma

Address: 446 Carroll Avenue

City & State: St. Paul, MN

Room(s) Upper Level

Meeting Time From: _____ To: _____

Food Service _____

Reserved By: Mike Wilf

Representative in Attendance: _____

Responsible for Payment: Phi Beta Sigma

Event Date Friday, July

#. Of People 4-500

Zip Code 55103

Reception From: 3pm To: 1 am

Set For: _____ Guarantee: _____

Phone: 553-0585 (w)

293-1568 (h)

Method of Payment cash or check

<u>Room Set Up</u>	
Theatre	Banquet
Classroom	Rounds
Conference	Cabaret
U-Shape	Stage
Head Table # _____	Raised
Registration Table	<u>Dance Floor</u>

<u>Meeting Equipment</u>	
Podium	Screens
Table Lectern	Projector
Flipchart/Pad Paper	VCR
Black/White Board	Microphones
Extension Cords	
Other:	

<u>Bar Arrangements</u>	
Host Bar	<u>Cash Bar</u>
Bar Brands	
Beer	Wine
Bartender Charge \$ _____	/Hour
Deleted for Each \$ _____	Liquor Sales
Bar Set Up Chrg \$ _____	

Room Rental: \$750.00

Other Charges:

Menu Sent	Confirmation	
	<u>5/7/90</u>	
Booked By	Date	Prepared By
<u>Joe Johnson</u>	<u>5/7/90</u>	<u>Sister Anderson</u>

<u>Linen</u>	<u>Product</u>
Balloons	Silver
Decorations	Candles
Flowers	Dinnerware
Champagne Fountain	Ice Carvings
Tents	

Menu

Price per cover does not include applicable state and local taxes or gratuity. Food and beverage must be purchased through West River Point.

NOTE: Final guarantee must be tendered five (5) working days in advance or groups will be charged the set for figure stated above.

PLEASE SIGN AND RETURN ONE COPY TO WRP.

Accepted By _____

Date _____

ZETA NU SIGMA 1990 CHAPTER REPORT

PROGRAM: SPRING MELTDOWN
DATE: March 16, 1990
LOCATION: West River Point - Minneapolis
COMMITTEE
CHAIR: Brother Michael Wulf

PROGRAM OBJECTIVES:

- 1) To raise operating capital for Zeta Nu Sigma functions, Scholarship commitments and other expenditures.
- 2) To bring together the diverse entities of the minority community into a melting pot of fun and exuberance.
- 3) To re-establish Phi Beta Sigma Fraternity, Inc., Zeta Nu Sigma Chapter as the dominant force in the Twin Cities area for social leadership, social consciousness, and social interaction.

COMMENTS:

The Spring Meltdown was a unique and lucrative marketing concept designed to take advantage of the Minnesota winter "Thaw". We target marketed all Black Greek Letter organizations, social clubs and night club enthusiasts. We capitalized on the "Cabin Fever" suffered by the young and energetic, and created a sense of nostalgia for the partygoers of old.

RESULTS:

The President of Zeta Nu Sigma, Lee Butcher, was urged to take the microphone by an ecstatically pleased patron to take due credit for the most gala event of the 90's. We were also able to increase our mailing list by over 500 names.

Culture For Service - Service For Humanity



June 8, 1990

Mike Wulf
Phi Beta Sigma
446 Carroll Avenue
St. Paul, MN 55103

Dear Mike:

Thank you so much for once again holding a fraternity event at West River Point. We have enjoyed being of service to you in the past and look forward to it once again.

I have enclosed for your reviewal and signature two contracts, one for July 6th and one for December 29th. Please sign and return the white copy of each contract.

With regards to the December 29th date, since this a prime holiday season, our rates have been increased by \$100.00. Because of the popular demand for space during this time, we must request a 50% room deposit of \$425.00. Your deposit check will be held on file until 90 days prior to the event. No refund will be issued after 90 days unless West River Point is able to rebook the space, in which case your deposit will be refunded minus a \$25.00 service fee. Without a deposit for the December 29th date, we cannot confirm the space to your organization.

We will await your call making an appointment with Bob Johnson to go over the details and room arrangements of your party.

Thank you, Mike.

Sincerely,

Kathy Anderson
Executive Administrative Services

Enc.

WEST RIVER POINT

1315 West River Road North
Minneapolis, MN 55411
612 521-3419



Superstar D.J,
Rick Pierce
Rocks the House.



Bro Cary White
does his part for
the Meltdown!

ZETA NU SIGMA 1990 CHAPTER REPORT

PROGRAM: BROTHERHOOD MEETING

DATE: July 28, 1990

LOCATION: Minneapolis, Minnesota
Churchill Apartment

PROGRAM OBJECTIVES:

- 1) To provide a forum for strengthening the overall brotherhood with Zeta Nu Sigma Chapter.
- 2) To provide Brothers an opportunity to share feelings about issues related to Chapter personnel and operations.

COMMENTS:

As the best Chapter in the United States, it is very important to have input from Chapter members on how they feel about Zeta Nu Sigma. This is an extremely hard working Chapter with a great deal of activity from many Brothers, which makes it imperative that we "process" how relationships are developing. This meeting came at a very critical point in the growth of the Chapter as we move into hosting the Great Lakes Regional Conference.

RESULTS:

All who attended this meeting left with a greater understanding of the Chapter and respect for all Brothers. Each person, including members from Pi Eta Chapter, were able to express feelings related to issues effecting all Sigmas in the State of Minnesota

Culture For Service - Service For Humanity



Phi Beta Sigma Fraternity, Inc.
Zeta Nu Sigma

**"March on march on, ye mighty host,
Nor think the journey done,
Nor of future deeds to boast,
Till we've the victory won."**

BROTHERHOOD MEETING

DATE: Saturday, July 28, 1990
TIME: 7:00 P.M. SHARP!!! (Remember "Time Value")
LOCATION: Churchill Apartments (Wayne Spooner)
Party Room
111 Marquette Ave South (Downtown Mpls.)
Minneapolis, MN

****This is a B.Y.O.B. function****



Brothers get together to have a
Brotherhood discussion.



ZETA NU SIGMA 1990 CHAPTER REPORT

PROGRAM: BACHELOR'S APPRECIATION NIGHT

DATE: August 1990

LOCATION: St. Paul, Minnesota

PROGRAM OBJECTIVES:

- 1) To demonstrate support of the many brothers who got married during 1990.
- 2) To provide a forum for strengthening the overall brotherhood within Zeta Nu Sigma Chapter.

COMMENTS:

This was an evening that many single, newly married, and not so newly married brothers will remember for a long time. The card playing, dominoes, cigar smoking and "Heart Throbbing Entertainment" all combined for a great evening. The evening began with brothers taking an opportunity to build brotherhood and enjoy a competitive game of cards or dominoes. As the evening progressed (and the "entertainment" heated up), cigars came out and all were elated.

RESULTS:

Over half of Zeta Nu Sigma was in attendance and all had a fun evening. In addition to a great turnout, there was a good representation from a wide variety of brothers. From the oldest Sigma to the newest, this will be a night for all to remember.

Culture For Service - Service For Humanity

ZETA NU SIGMA 1990 CHAPTER REPORT

PROGRAM: 1990 MS. BLACK MINNESOTA PAGEANT, INC.

DATE: June 29 - 30 1990

LOCATION: Concordia College, St. Paul, Minnesota

COMMITTEE

CHAIR: Brother Dwane Martin

COMMITTEE

MEMBERS: Brothers: Mark Beecham, Ed Robinson, Willard Hutt,
Darwin Marshall, Bobby VanBuren

PROGRAM OBJECTIVES:

- 1) To promote unity within the black neighborhoods.
- 2) To set the tone for paternal leadership of African American fraternities in the Twin Cities.
- 3) To give support and assistance towards this program.

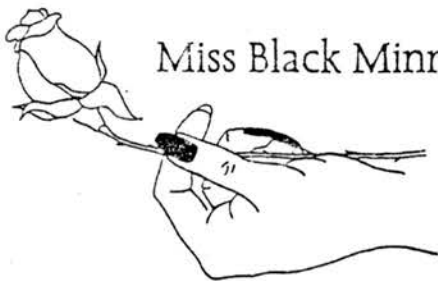
COMMENTS:

The men of Phi Beta Sigma Fraternity, Inc., were ushers on the first night of the pageant and used as escorts for the emcees. On the second night the men of Phi Beta Sigma Fraternity served in the role of official escort for the emcees, pageant contestants, and outgoing (1989) pageant court.

RESULTS:

There was an overwhelming welcome for our support for the third year and the men of Phi Beta Sigma Fraternity responded quite well. May our cause speed on and let us support our national theme: "Sigma's Focused On Issues That Impact The African-American Male To Strengthen America's Communities."

Culture For Service - Service For Humanity



Miss Black Minnesota Pageant, Inc.

1701 Oak Park Avenue North
Minneapolis, Minnesota 55411
(612) 377-7000

August 14, 1990

Ms. Jeweleen Jackson
Executive Director

Mr. Alvin Cobbins
President

Mr. Phillip Bjerken
Vice President

Ms. Valerie Cuff
Ms. Jayne Caldwell
Co-Secretaries

Ms. Jeweleen Jackson
Administration Chairperson

Ms. Jayne Caldwell
Ms. Pamela Wilkins
Contestant Co-Chairpersons

Mr. Phillip Bjerken
Finance/Fundraising Chairperson

Ms. Teresa Nwokeuku
Ms. Jackie Grant-Williams
Judges' Co-Chairpersons

Mr. Kevin "L.A." Jenkins
Ms. Tonya Herbert
Production Co-Chairpersons

Ms. Jeweleen Jackson
Ms. Adrienne Wade
Publicity Co-Chairpersons


Dear: Phi Beta Sigma Fraternity, Inc.

With your invaluable help, the 1990 Miss Black Minnesota Pageant, Inc. was a success.

I would like to extend our appreciation to you. Without your support, talent, and skills the contestants would not have had the opportunity to experience the joy of such an event.

I salute you for your participation and thank you for your support continue.

Sincerely,


Kevin L.A. Jenkins
MBMPI Production Chair

KJ:ef



Bros Robertson, Van Buren, Martin and Beecham
escort the Queen and majestic court.

ZETA NU SIGMA 1990 CHAPTER REPORT

PROGRAM: JUNETEENTH MEN'S BASKETBALL INVITATIONAL

DATE: Monday, June 11 - 15, 1990

LOCATION: Central Community Center
Minneapolis, MN.

COMMITTEE

CHAIR: Bro. George Robinson

COMMITTEE

MEMBERS: Bro(s).

- 1) Percy Wade
- 2) Robert Doty
- 3) Mike Wulf
- 4) Jame Randle
- 5) Michael Carter
- 6) George Sanders
- 7) Kevin Tucker

PROGRAM OBJECTIVES:

- 1) Promote the name of Phi Beta Sigma Fraternity within the Twin City community.
- 2) Provide a source of fund raising for the annual Juneteenth Celebration.
- 3) To provide a forum for linking African American Youth with African American Mentors.

COMMENTS:

The First Annual Juneteenth Men's Basketball Invitational was a 'Slammin', Dunkin' success. There were six Teams participating in the Invitational. We had the television stars from WCCO TV, KMOJ Jammers from KMOJ radio station, Christian Brothers for the Greater St. Paul Church (COGIC), the Crusaders for the Pilgrim Baptist Church, the Bad Boys from the Downtown YMCA, and Great Sigma Slammer's. Each team brought their own following to cheer them on to victory.

Culture for Service - Service For Humanity

ZETA NU SIGMA 1990 CHAPTER REPORT

RESULTS:

The large turnout was an indicator that Phi Beta Sigma's name is on the streets and held in the very utmost regards. Many people commented on the "great" time they had.

The First Annual Juneteenth Men's Basketball Invitational was won by the Greater St. Paul Church of God in Christ. The Phi Beta Sigma Brothers played well but finished second. Everyone left mumbling something about waiting for next year.

The event was an overwhelming success for the Oak Park Neighborhood Center which was hosting the Juneteenth Celebration.

Culture For Service - Service For Humanity

First Annual Juneteenth Men's Basketball Invitational

When: June 11-15, 1990
(Monday - Friday)

Time: 6:30 p.m. & 8:30 p.m.
nightly

Where: Central Community Gym
3450 4th Avenue South
Minneapolis, MN

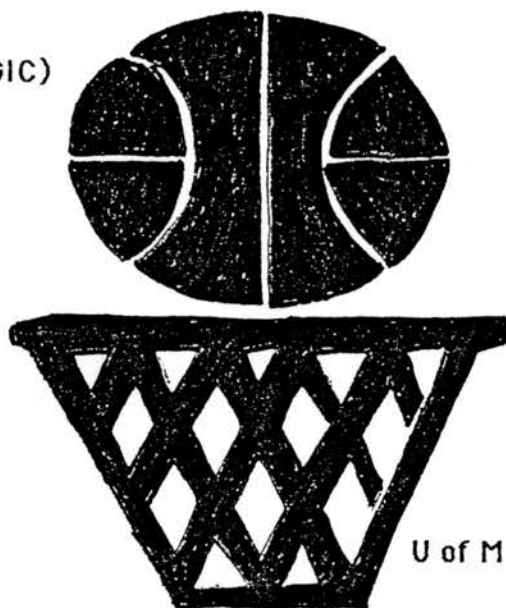
Admission: \$1.00

Greater St. Paul Church(COGIC)

Downtown YWCA

Pilgrim Baptist Church

3M



KMOJ Radio

Phi Beta Sigma

WCCO TV

U of M Africana Student Cultural Center

This basketball tournament is a fundraiser for the annual Juneteenth Celebration to be held on Saturday, June 16, at Oak Park Neighborhood Center (1701 Oak Park Ave., No.)

For more info call: Maxie @ 377-7000 or Cindy @ 348-7086

First Annual Juneteenth Men's Basketball Invitational
Schedule
(June 11 - 15)

	Mon.	Tues.	Wed.	Thurs.	Fri.
6:30 pm	*COGIC YWCA	3M WCCO TV			
8:30 pm.	PHI BETA SIGMA KMOJ	*AFR-CTR. PILGRIM BAPTIST			

*Greater St. Paul (COGIC), Downtown YWCA, PHI BETA SIGMA, KMOJ RADIO 3M, WCCO TV, *U of M Africana Student Cultural Center, Pilgrim Baptist Church.



1701 Oak Park Ave. N. • Minneapolis, MN 55411 612/377-7000

September 25, 1990

Dear Mr. Wulf:

On behalf of the Juneteenth Steering Committee, I would like to thank you for your participation in making this year's celebration a great success. I hope that your day was enjoyable in spite of the rain. Although this created some great inconveniences for many, the efforts of everyone helped to alleviate some of the problems.

We welcome your input as to how Juneteenth can be an even more successful event. If you are interested in working with the steering committee to plan and implement this celebration, please call me at 377-7000.

Again, thank you.

Sincerely,

Barbara Donoho

Barbara Donoho
Juneteenth Committee
Oak Park Center

BD:mm

With celebrations in unison occurring across the nation:

**Galveston, Texas; Bogalusa, Louisiana; Oakland, California; Milwaukee, Wisconsin; Denver, Colorado; Kansas City, Kansas*

**Original birthplace of the Juneteenth Celebration recognizing it as a legal state holiday.*

ZETA NU SIGMA 1990 CHAPTER REPORT

PROGRAM: PANHELLENIC (Greek) GAMES
Bowling Tournament

DATE: June 15, 1990

LOCATION: Midway Pro Bowl, St. Paul, Minnesota

The Panhellenic Bowling Tournament was held June 15, 1990 at Midway Pro Bowl, St. Paul, Minnesota. The Sigma team was the defending champion in this event and they were not to be denied the 1990 championship. At first, it appeared with only three players, the Sigmas were in trouble. But after a tremendous first game, winning by over 150 pins, the Sigmas were in fine position to win two of the three games as well as total pins. The championship was ours again!!!

PROGRAM: PANHELLENIC (Greek) GAMES
Volleyball Tournament

The Sigma Team came into the Volleyball competition with something to prove. In the 1989 competition, the Sigma Team fell to defeat at the hands of the Kappas in the final round. This year's competition came down to the same two teams in the finals, but this year with a different outcome. The Sigmas breezed past the men of Kappa Alpha Psi winning the best of three series 15-8, 12-15, and 15-10. Victory is so SWEET!!

Culture for Service - Service For Humanity

ZETA NU SIGMA 1990 CHAPTER REPORT

PROGRAM: PANHELLENIC (Greek) GAMES
Basketball Tournament

TEAM: Robert Doty
Terry Esthers
Randy Staten
George Robinson
Kevin Tucker
David Wynn
George Sanders
James Randle

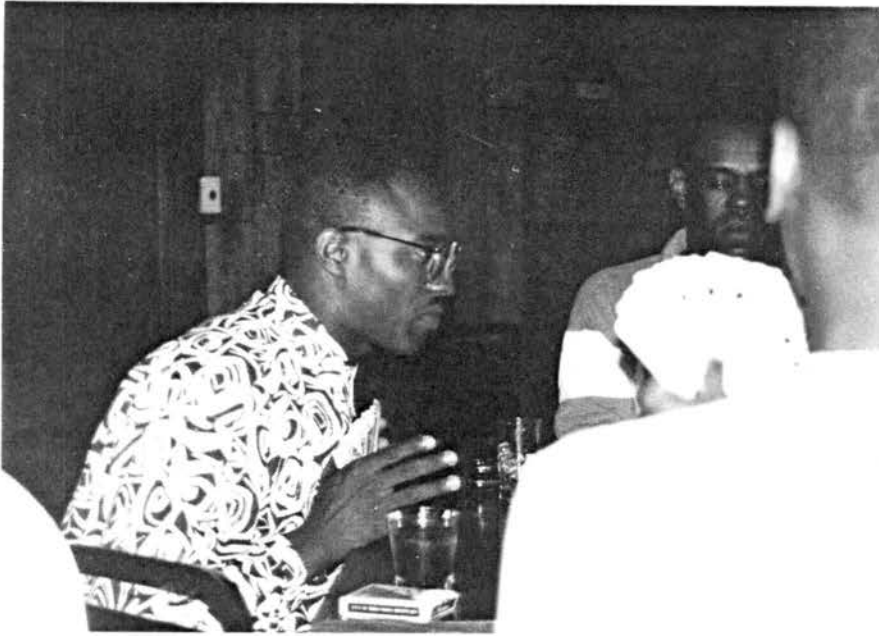
Being the defending champs in the Basketball Tournament meant that each of the other Greek teams were out to knock the Sigmas off the top of the hill. The first game was against the Alphas which the Sigma team won by a score of 60-52. The second game was against Kappa Alpha Psi which ended tied at 50. In the overtime, the Sigmas fought hard but the victory was not to be ours as the Kappas won by a score of 70-68. Better luck next year to the mighty men in blue!

PROGRAM: PANHELLENIC (Greek) GAMES
Table Games

TEAMS: Willard Hutt
Mark Beacham
Wayne Spooner
Edwin O. Lloyd
Ed Robertson

The annual Table Games Tournament was held at the Riverview Supper Club. The games played included checkers, chess, backgammon, spades, bid wist, and dominoes. The Sigma team lost close matches in spades and bid wist and ended the afternoon with zero points to add to the victory column.

Culture For Service - Service For Humanity



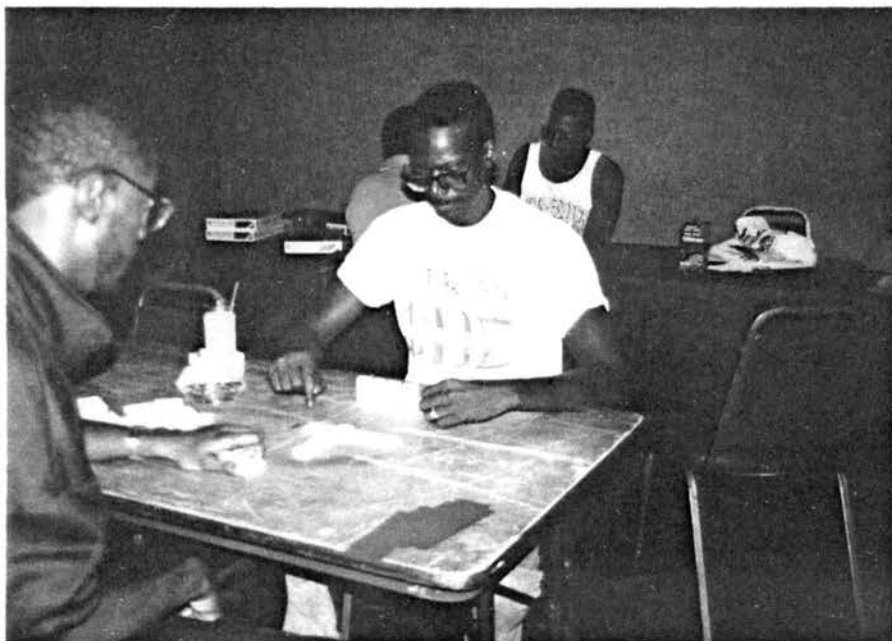
Crap! I got the 'Ole Maid again.



"I'd trade my best bones for a haircut like his.



Bros Weddington and Wulf concentrate on their "bones" and their opponents.



Bro Mark Beecham has the table staked against the opposition.



In 1990, Zeta Nu Sigma Chapter won their 11th
Twin Cities area Panhellenic Council Championship!

ZETA NU SIGMA 1990 CHAPTER REPORT

PROGRAM: FRATERNITY PICNIC
DATE: June 2, 1990
LOCATION: Wolfe Park, Minneapolis

PROGRAM OBJECTIVES:

- 1) To provide relaxation and fun for all of the Chapter Brothers, families and friends.
- 2) To promote family unity and brotherhood.
- 3) To promote a competitive environment for Brothers in attendance.

COMMENTS:

All Brothers, family members and friends shared in the spirit of fellowship. There was volleyball, children, basketball, and pool games that were enjoyed by everyone.

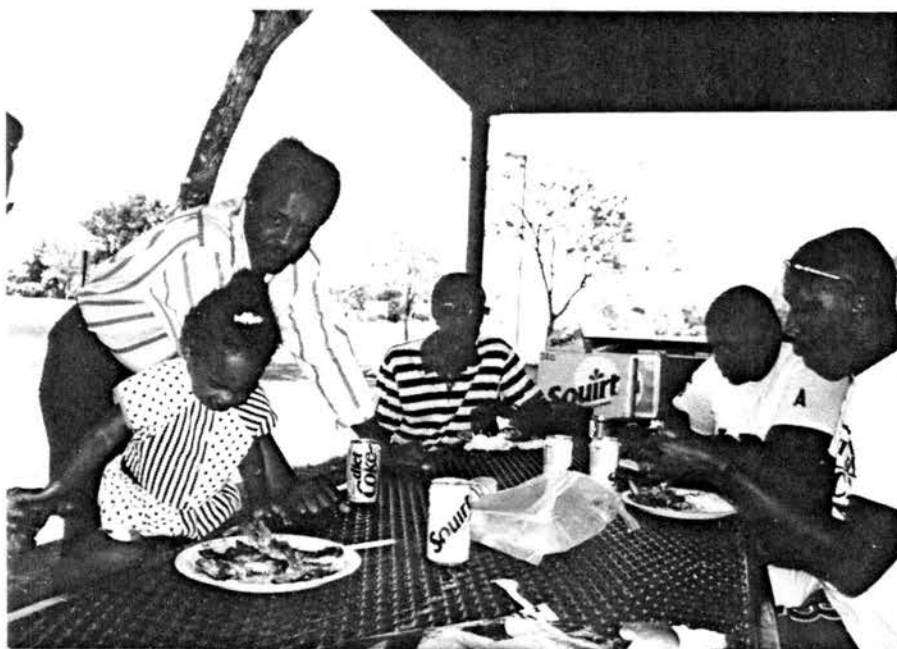
RESULTS:

All who attended the Picnic shared in good food and plenty of fun. We departed in good spirits and look forward to next year's Picnic.

Culture For Service - Service For Humanity



The Brothers
cook the food...



Feed the kids...



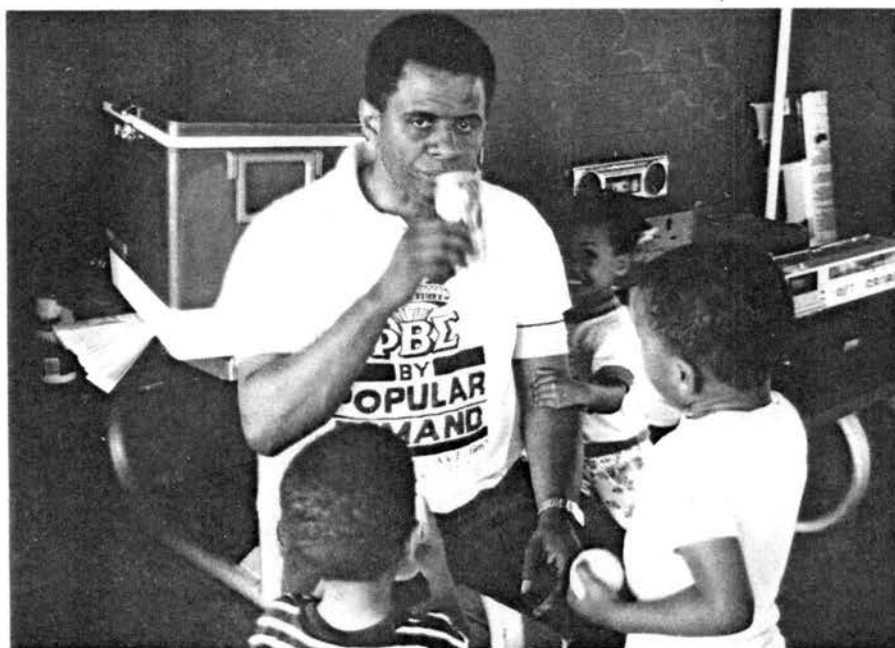
...And the ladies
catch up on the
latest rumors.



Bro. George Robinson
reaches for a "pamper".

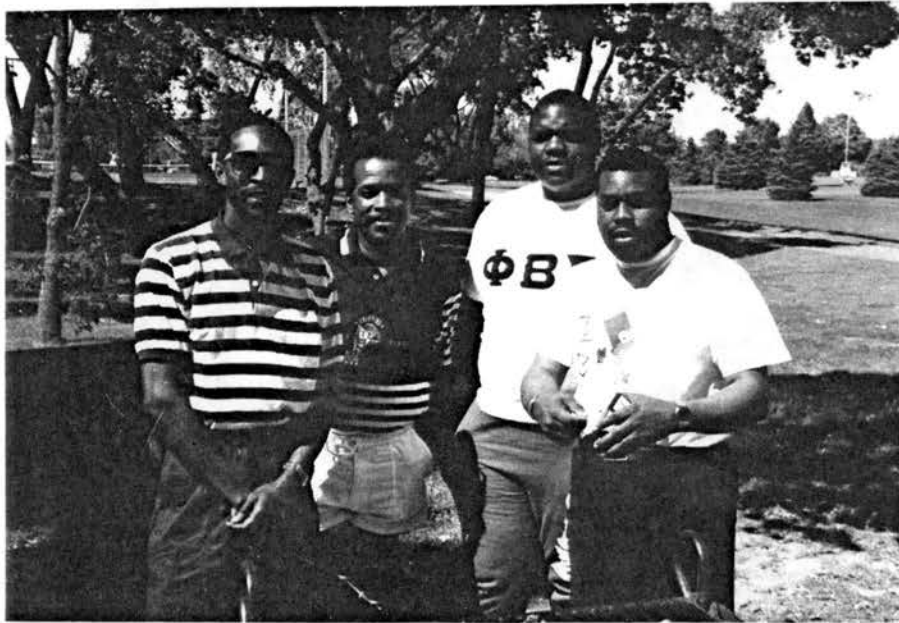


Sigmas enjoy healthy competition on the
vollelyball court.

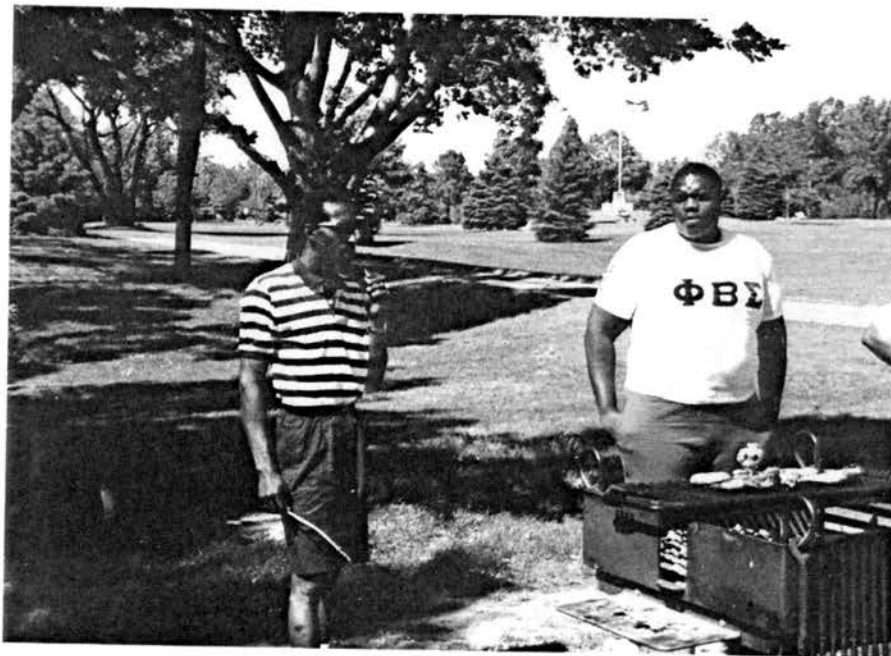


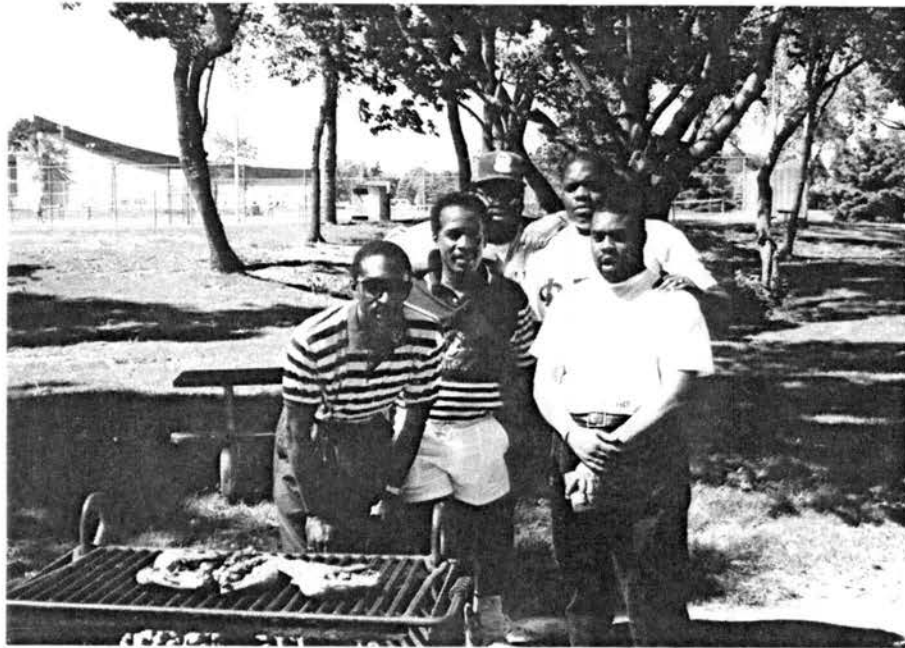
Brothers and family enjoy the 12th
Annual Sigma Picnic.



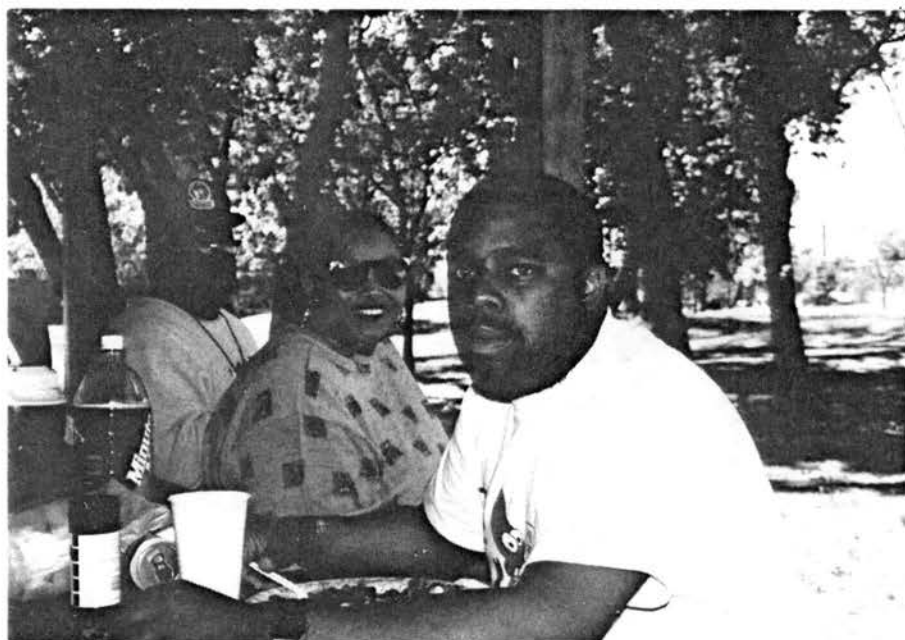


Phi Beta Sigma Barbecue Crew





Brothers and family enjoy the brief Minnesota Summer



ZETA NU SIGMA 1990 CHAPTER REPORT

PROGRAM: SIGMA CHRISTMAS PARTY

DATE: December 8, 1990

LOCATION: Residence of Hillary Thomas
1478 Woodhill, Burnsville, Minnesota

COMMITTEE

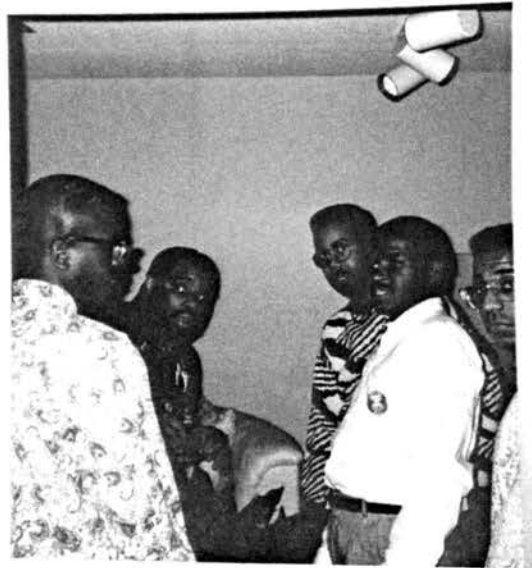
CHAIR: Brother Darwin Marshall

COST: \$150.00

The cost includes:

- Rental set-up, clean-up and meats
- BYOB
- Party tapes provided by Tim Wilson
- Can invite one guest
- Need Phone Captains

- Dessert (A-G)
- Hotdish (H-M)
- Salad (N-S)
- Extras (T-Z)



Brothers and family celebrate annual Christmas Party at Brother Hillary Thomas' House.



ZETA NU SIGMA 1990 CHAPTER REPORT

PROGRAM: NOMINATING COMMITTEE

MEMBERS: Robert Doty - Chairman
 Willard Hutt
 Keith Anderson
 Tim Wilson

The Committee met to decide its approach to the nominations of Chapter officers. It was decided that phone conversations would be held with as many brothers as possible to determine possible candidates. Once a list of candidates was determined, the qualifications of each candidate was checked and a final ballot was developed. The ballot was handed out to brothers at the December meeting where the vote was taken.

1990 IN REVIEW

THE PRESIDENT'S REPORT

We began on a high note starting February reviewing our plans in the Executive Board Room of the FMC Corporation through connections through Brother Dwane Martin. It was a major step for organizing our continued strive for the business atmosphere and way of doing business in the Corporation. Each program director presented their report and a slide presentation that was approved unanimously by all of the Brothers. From there we had our first successful function - the Spring Meltdown. The weather was bad; the attendance was great, and the receipts were okay.

Then something mysterious happened. We went from a high (of the first quarter of the year) to the lowest I have ever seen Sigma in the Twin Cities become. We had confusion. We had Brothers that felt frustrated - brothers that felt that they were carrying all of the load - brothers that felt they were mistreated - brothers felt left out - brothers that felt abandoned - brothers that felt they knew how to do it a better way. We went from a unified strong brotherhood supporting each other to rumors of splitting the chapter (supported by some of the highest brothers in office. We went to subcommittees made up of partnerships and mutual ideas networking behind the scenes undermining the total picture.)

Our next three functions were unprofitable primarily due to a lack of ticket support from the Brothers. We had less than ten brothers selling the tickets (and of those ten only a few actually sold what was required of them). Indeed, as I look back on the Summer and Fall of 1990 it was a sad occasion for me as the President, being the leader of the Group, watching things crumble in every endeavor I put forth. Somehow through prayer and guidance of all, as we started planning our Founders Day for 1991 and thinking about Christmas, we began to slowly bring things back together. We united a rather spectacular Founder's Day Program that rekindled and reunited the Brotherhood. The Summer and Fall brotherhood meetings had paid off. Feelings were healed. The Brotherhood was alive and well again in Zeta Nu Sigma. Leadership regained the respect and took its rightful place in guiding the Chapter.

I look back over 1990 and I feel that I was a baby in January and a grown seasoned veteran by December. It showed in my personal life as well as my corporate life, when you're put to the test and you're up against the wall it goes to show a Sigma man can deliver and can deliver in a Sigma style.

Our Sigma career rap program again proved to be our number one program for the year. It went into Minneapolis as well as St. Paul this year, marking a reinterest into the Minneapolis community and extending the Sigma rap program a little further among the minority participants of the Twin Cities.

ZETA NU SIGMA 1990 CHAPTER REPORT

Our Sigma career rap program again proved to be our number one program for the year. It went into Minneapolis as well as St. Paul this year, marking a reinterest into the Minneapolis community and extending the Sigma rap program a little further among the minority participants of the Twin Cities.

Our relationship with our sister chapter, Zeta Phi Beta, was still mediocre. We tried several times to bring a couple of functions together but to no avail. That would be the objective for 1991 to unite the brothers and sisters and have one function that we can be proud of that can represent truly brotherhood and sisterhood.

Again, we captured the crown of the Panhellenic council games. Sigma men in doing this during the Summer despite a Chapter that was at its lowest point of commitment and involvement within the brotherhood proved again the Sigma's are making a difference - we rise to the occasion.

From a membership standpoint, we yielded five brothers from Pi Eta Chapter. Undergraduate chapter on the University of Minnesota Campus. Zeta Nu Sigma also lost five brothers from out of the ranks of bachelorhood. Reverend Devin Miller, Robert Doty, Dr. Robert Jones, Tim Wilson and Willard Hutt. All outstanding single men that gave up the ranks of single life for wedlock.

The highest note of 1990, from my perspective, yielded a week long celebration where we united with the Oak Park Community Center and brought forth Kwanzaa celebration. Through significant efforts by Brother Darwin Marshall, we landed two grants totaling \$5,000. We provided food for the other programs for that week as well as climaxed the Kwanzaa Festival on Saturday with a spectacular program that day and a superstar dance that night. Bad weather again, (40° degrees), bone chilling wind chill, and still people attended; not the numbers we had hoped for, but the ones that were there had one hell of a good time. This marked the first time that Zeta Nu had attempted a Grant from the City and received one. It was the efforts and perseverance of Brother Marshall at the time when we were low in brotherhood and very few came around to support, that he took the true colors of blue and white within his heart and excelled to the next level. It was the toast of the holiday spirit and a truly remarkable experience for all of the brothers of Sigma. I can foresee that we will, undoubtedly make an this annual Kwanzaa participation event for the years to come.

ΦΒΣ / ΖΝΣ Membership Roster

January 1, 1991

NAME (SPOUSE)	POSITION	HOME / WORK PHONE
Anderson, Keith () 4548 Oakland Ave S Minneapolis, MN 55407	Mortgage Banking	612-825-3268 / 612-623-7544
Barner II, Pearl (Amanda) 590 Iglehart Ave St. Paul, MN 55103	Psychologist	612-291-2668 /
Beecham, Mark (Sharon) 848 Thomas Avenue St. Paul, MN 55104	Entrepenuer	612-224-6550 / 612-542-6106
Blakey, Jerry (Jackie) 151 No. Milton St. St. Paul, MN 55104	Coordinator	612-646-5923 / 612-xxx-xxxx
Bowling, Anthony (Le' Donna) 3828 Westbury Lane Eagan, MN 55123	Engineer	612-452-1100 / 612-344-6741
Brown, Kay (Lola) 9104 Larkspur Lane Eden Prairie, MN 55344	Engineer	612-941-9068 / 612-939-2957
Butchee', Bill (Michelle) 685 Hanover Court Eagan, MN 55123	Materials Tech (Foley)	UNPUB:688-7611 / 612-545-1475
Butcher, Leondias () 2101 Queens Avenue North Minneapolis, MN 55411	Engineer	UNPUB:588-1972 / 612-574-4244
Carter, Michael (Cheryle) 1627 B Upper Afton Road St. Paul, MN 55106	Marketing	612-776-7474 / 612-736-5643
Cheetham, James (Joann) 9433 Knighton Road Woodbury, MN 55125	Engineer	612-731-6259 /
Clark, Otis (Jo Ann) 2051 Suburban Avenue St. Paul, MN 55119	Engineer	612-739-6123 / 612-733-3862
Coleman, Lonnie (Gerrie) 2272 Hazel Street St. Paul, MN 55109	Accountant	612-770-6815 / 612-221-7217
Collier, Ronald (Deridor) 125 Queen Victoria #24 Hamilton, ONTARIO L8W-24,	Engineer	416-574-8092 /

NAME (SPOUSE)	POSITION	HOME / WORK PHONE
Cunningham, James A. (Karon) 878 - 66th Ave N Brooklyn Center, MN 55430	Attorney	612-561-1713 / 612-340-8988
Doty, Robert (Monique) 50 - 4th Ave No #44A Minneapolis, MN 55401	Accountant	612-333-7419 / 612-298-2425
Esters, Terrance () 5849 - 73rd Ave N - #8 Brooklyn Park, MN 55429	Operations Mgmt	612-561-6049 / 612-574-5000
Fernandez, Dwight (Patricia) 1304 W. Royal Oaks Dr. Shoreview, MN 55126	Architect	612-780-9598 / 612-332-3944
Finch Sr., Harold (Gerri) 312 S. 4th St. Minneapolis, MN 55415	I.R.S. Agent	612-824-1278 /
Gaines, Doug 7400 Hwy 7 St. Louis Park, MN 55426	District Manager	612-937-5625 / 612-939-5276
Gibson, Daryl () 7500 Hwy 7 #373 St. Louis Park, MN 55446	Programmer Analyst	612-493-2564 /
Glass, Gerald 600 - 1st Ave N Minneapolis, MN 55403	MN Timberwolves	
Howard, Oscar (Virginia) 4317 Oakland Avenue So. Minneapolis, MN 55407	Retired	612-827-4936 /
Hutt, Willard Andre' (Maria) 1407 - 18th Ave N Minneapolis, MN 55411	Sales/Marketing	612-522-2286 /
Igwebuike, Donald 9520 Viking Drive Eden Prairie, MN 55344	MN Vikings	
Johnson, Robert (Karrie) 1014 Russell Ave N Minneapolis, MN 55411	Policy Analyst Dept. of Revenue	612-529-8722 / 612-296-5145
Jones, Perry 2181 Springside Drive St. Paul, MN 55119	Master Lab Technician	612-738-8182 / 612-778-5818
Jones, Dr., Robert (April) 1935 Washburn Avenue North Minneapolis, MN 55411	Plant Physiologist	612-521-1302 / 612-625-1267
Lewis, Robert (Virginia) 699 Guthrie Avenue No. Oakdale, MN 55119	Chemist	612-739-3587 / 612-458-2176

NAME (SPOUSE)	POSITION	HOME / WORK PHONE
Lloyd, Edwin () 161 No. Lexington Pkwy. St. Paul, MN 55104	Entrepreneur	612-646-0768 / 612-553-1300
Lockett, Ted (Judy) 501 Queens Avenue N. Minneapolis, MN 55405	Entrepreneur	612-377-1385 / 612-222-2531
Lucas, Gregory (Carla) 4157 James Avenue N Minneapolis, MN 55412	Program Director	612-521-0450 / 612-588-9484
Marshall, Darwin () 1501 LaSalle Ave 511 Minneapolis, MN 55403	Corrections	612-871-5915 / 612-348-7705
Martin, Dwane () P.O. Box 10894 Minneapolis, MN 55458	Engineer	612-588-3131 / 612-342-7500
Mc Carty, Abraham (Barbara) 2155 Valley View Place St. Paul, MN 55119	Accounts Payable Supervisor	612-739-5423 / 612-221-7582
Mc Gee, Donald (Althea) 1372 Jurdy Road Eagan, MN 55121	Engineer	612-452-6947 / 507-455-4396
Mc Grew, Herbert (Joann) 202 Meadowood Lane Vadnais Heights, MN 55127	Engineer	612-483-1257 / 612-778-4292
Mc Kerson, Hayward (Effie) 5729 France Avenue So. Minneapolis, MN 55401	Entrepreneur	612-927-6297 / 612-645-0107
Mc Kinnie, Capt. Christopher () 2000 Fort Road West #210 St. Paul, MN 55116	U.S.A.F.R.	612-699-5105 / 612-725-5328
Miller, Devin Lee (Denise) 7350 Bristol Village Dr. Apt #234 Bloomington, MN 55438	Minister	612-942-6114 / 612-227-3220
Mims, Earl () 843 Aurora Avenue St. Paul, MN 55104	Entrepreneur	612-291-7623 /
Mitchell, Jim (Marsha) 4393 Bearpath Trail Eagan, MN 55122	Entrepreneur	612-688-0267 / 612-823-4432
Moore, Charles 3901 Heritage Hills Drive Bloomington, MN 55437	Computer Analyst	612-831-9031 / 612-726-7873
Moore, Troy 4652 Aldrich Ave N Minneapolis, MN 55412	Retail Sales	612-588-8668 / 612-333-3954

NAME (SPOUSE)	POSITION	HOME / WORK PHONE
Nero, Sam (Shirley) 9227 West 22nd Street St. Louis Park, MN 55426	Engineer	612-545-3948 / 612-931-1328
Nichols, Eugene M. () 4 David Court Dayton, NJ 08810	Sales Manager	201-274-0316 / 215-638-6302
Porter II, Louis () 753 Hall Avenue St. Paul, MN 55107	Reporter	612-227-1269 / 612-228-5456
Pratt, Emeric () 2214 Russell Avenue No. Minneapolis, MN 55411	Personnel	612-522-5698 / 612-624-8096
Price, Jonathan (Stephanie) 9123 Sequoia Bay Woodbury, MN 55125	Procurement	612-739-7509 / 612-482-2372
Randle, James (Angela) 9370 Ranchview Lane Maple Grove, MN 55369	Career Developer	612-420-8599 / 612-644-4406
Richburg, Joseph (Dottie) 1421 Lark Maplewood, MN 55109	Computer Analyst	612-777-7677 / 612-736-3306
Robertson, Edward (Juanita) 325 St. Albans No. St. Paul, MN 55104	Engineer	612-228-9699 / 612-458-1238
Robinson, George (Johnette) 8524 Washburn Avenue So. Bloomington, MN 55431	Insurance Officer	612-884-6378 / 612-298-3548
Rupert, Aaron (Charmine) 649 Hillwood Court St. Paul, MN 55119	Educator	612-739-2153 /
Sanders, George () 7300 Bristol Village Drive - #114 Bloomington, MN 55438	Youth Program Dir.	612-942-9128 / 612-544-7708
Simmons, Calvin (Dorothy) 7180 Ivystone Avenue South Cottage Grove, MN 55010	Senior Underwriter	612-459-8006 / 612-631-4164
Singleton, Oliver (Pauline) 413 Central Avenue West St. Paul, MN 55103	Mgmt. Consultant	612-291-7486 / 612-944-5332
Staten, Randy () 2221 Blaisdell Ave S - #23 Minneapolis, MN 554xx	Optical Rep.	612-871-5792 /
Stittiam, Derek () P.O. Box 497 Minneapolis, MN 55440	Computer Engineer	612-332-6747 / 612-341-6941

NAME (SPOUSE)	POSITION	HOME / WORK PHONE
Taylor, Steve 412 S. 22nd Ave Middlebrook Hall 1248 Minneapolis, MN 55455	Graduate Student	612-625-1862 / 612-624-4029
Thomas, Hillary () 1478 Woodhill Road Burnsville, MN 55337	Entrepreneur	612-894-1707 / 612-529-2919
Thomas, James (Stella) 21630 Homestead Trail Corcoran, MN 55340	Engineer	612-478-6972 / 612-574-4143
Tucker, Jr., Kevin () 7300 Bristol Village Drive - #114 Bloomington, MN 55438	Corrections	612-942-9128 / 612-934-4000
Van Buren, Bobby () 1306 Washburn Ave N Minneapolis, MN 55411	Sales Representative	612-588-4953 / 612-292-4950 (Beeper 612-621-1457)
Wade, Percy E. (Roslyn) 549 Asbury St. Paul, MN 55104	Youth Director	612-644-4573 / 612-827-5401
Walker, Phil (Lorene) 310 W. County Road B2 Roseville, MN 55113	Designer Engineer	612-481-9583 / 612-778-4943
Washington, Vant () 631 Hall Lane Minneapolis, MN 55411	Retail Sales	612-521-5844 / 612-332-6378
Watkins, J. C. (Versie) 16096 Huron Circle Lakeville, MN 55044	Public Relations	612-891-4151 / 612-854-2372
Webb, McClinton (Karen) 15235 Danville Avenue Rosemount, MN 55068	Personnel	612-423-3813 / 612-733-0687
Weddington, Martin (Sallie Mae) 714 W. Central Avenue St. Paul, MN 55104	Retired	612-222-0295 / 612-227-8795
Wilderson, Dr., Frank (Ida-Lorraine) 1717 James Avenue So. Minneapolis, MN 55403	Educator	612-377-0491 / 612-377-0491
Wilson, Louis (Freddie) 7140 Coachwood Circle Woodbury, MN 55125	Engineer	612-739-2602 / 612-642-8765
Wilson, Michael (Lorean) 2232 Boxwood Avenue St. Paul, MN 55119	Educator	612-738-9114 / 612-292-6275
Wilson, Timothy (Carmen) 5343 Penn Avenue - #1 Minneapolis, MN 55419	Sales	612-929-3707 / 612-835-2221

NAME (SPOUSE)	POSITION	HOME	/ WORK PHONE
Wulf, Michael (Fayette) 446 Carroll Avenue St. Paul, MN 55103	Pc Development Manager	612-293-1568	/ 612-553-0585
Wynn, David (Monica) 1716 S. Fremont #3 Minneapolis, MN 55403	Sales	612-377-9736	/ 612-939-7639 333-0380 taking calls by

ZNS ROSTER ADDENDUM

CHPT	NAME (SPOUSE)	POSITION	HOME / WORK PHONE
ZNS	Branch, Michael (Cynthia) P.O. Box 325 Louisville, CO 80024	Engineer	303-457-4505 / 303-673-4341
PE	Brown, Henry	Student/U of M	612-378-2071
PE	Burt, Anthony	Student/U of M	612-541-6660
PE	Cannon, Delon 840 - 18th Ave. SE - #203 Minneapolis, MN 55414	Student/U of M	612-331-6033 /(Pres.)
PE	Cherry, Dennis	Student/U of M	
PE	Collins, Charles	Student/U of M	624-1202(Dorm) / 648-1161 Beeper
PE	Dodd, Milton	Student/U of M	612-735-2102
PE	Elliot, Michael () 224 - 26th St. E Minneapolis, MN	Student/U of M	612-874-9660
PE	Graham, Craig	
PE	Harris, Sir Mitchell	Student/St. Cloud State	
ZNS	Haynes, Honorable Amos (Louise) Maplewood, MN 55109	Omega Chapter/Founding Father of ZNS	
ΣBClub	Humphres, Aaron 1017 Dayton Ave St. Paul, MN 55104	Sigma Beta Club	612-645-1830
	Miles, Capt. Jerome () 2426 Blaisdale - #308 Minneapolis, MN 55407	U.S. Army	612-870-0397 / 612-378-4559
ZNS	Mims, Davie (Regina)	Sales Rep	612-641-1966 / 612-452-5300
PE	Oliver, Tyrone	Student/U of M	626-0658 (Dorm)
A	Spooner, Wayne () Washington DC	Howard U	
PE	Thaddeaus, Andre'	Student/U of M	
	Walker, Herschel	Minnesota Vikings	
ZNS	Wheeler, Noel ()	Procurement	804-463-4005 / 804-380-7517
PE	Wilson, Gregory	Student/U of M	612-861-4382
PE	Wotorson, Cletus	Student/U of M	625-6428 (Dorm)

$\Phi\beta\Sigma$ *Twelve Inch Rule*

Time Value

Best Performance of Duty

Perseverance

the Worth of Example

the Virtue of Patience

Talent Expression

Economic Wisdom

the Value of Character

Kindly Attitudes

Pleasure in Work

the Worth of Organization

the Dignity of Simplicity

SCHEDULE "A"

(CFR - 990)

Statement of Authorization and Tax Information
Period Covered - January 1st to December 31st, 19 90

1. Chapter Name ZETA NU SIGMA
Region Great Lakes City Mpls./St. Paul State MN
2. Gross Receipts
- | | |
|--|------------------|
| a. Total dues and assessments from members and pledges | <u>4607.60</u> |
| b. Gross receipts from fund raising | <u>4252.84</u> |
| c. Contributions and gifts received | <u>0.00</u> |
| d. Other (Please specify) | <u>2282.09**</u> |
| e. Total gross receipts (add a,b,c, & d) | <u>11142.53</u> |
3. Gross Disbursements
- | | |
|--|-------------------|
| a. Expenses to operate chapter | <u>2987.00</u> |
| b. Contributions and gifts disbursed | <u>421.59</u> |
| c. Other Expenses (Please specify) | <u>6874.77</u> |
| d. Total gross disbursements (add a,b & c) | <u>10283.36**</u> |
| | <u>859.17</u> |
4. Increase or [Decrease] in worth (2e minus 3d)

I hereby declare that this information has been examined by me and that to the best of my knowledge and belief it is true, correct and made in good faith.

Date: April 1, 1991 -

President:

Treasurer:

Reonbar B. Smith
James R. Rourke

PBS - Chapter Financial Report Form 19 90

** See Attached

	JANUARY	FEBRUARY	MARCH	APRIL	MAY	JUNE	JULY
I N C O M E							
Dues	\$320.00	\$1500.00	\$175.00	\$320.00	\$120.00	\$40.00	
Founders Day	\$1472.09	\$200.00		\$20.00	\$65.00		
March Meltdown			\$1927.84	\$25.00			
Summer Sizzler							
Bachelor Appreciation Night							
Pledge Fees							
Returned Checks							
Kwanzaa							
TOTAL INCOME							
E X P E N C E S							
Founders Day	\$1759.00		\$217.00				
Awards				\$61.59			
Typing			\$20.00			\$35.00	
Postage	\$25.00		\$54.00				
Chapter Taxes	\$50.00						
Printing	\$201.50	\$152.93	\$250.57			\$68.00	
Checking Account Charges	\$6.00	\$6.00	\$6.00	\$6.00	\$6.00	\$6.00	\$6.00
March Meltdown			\$200.00				
Advertisements				\$100.00	\$50.00		
Chapter Picnic						\$159.00	
Bachelor Appreciation Night							
Summer Sizzler							\$150.00
Loans							
Housing Fund				\$150.00			
Pan Hell Dues				\$100.00			
National/Regional Dues				\$840.00			
Kwanzaa							
Room Rental			\$750.00			\$350.00	\$400.00
Returned Checks							
Christmas Party							
Misc.			\$72.09	\$60.00	\$50.00		

AUGUST	SEPTEMBER	OCTOBER	NOVEMBER	DECEMBER	Yearly Totals
					\$4087.80
	\$165.65	\$246.30	\$176.30	\$1024.35	\$1757.09
					\$1952.84
					\$1023.00
\$954.00		\$69.00			\$405.00
\$375.00	\$30.00				\$520.00
	\$520.00				\$120.00
	\$120.00				\$1277.00
			\$190.00	\$1087.00	\$11142.53
					\$1986.00
					\$61.59
					\$55.00
					\$102.00
\$15.00			\$8.00		\$50.00
					\$700.00
			\$27.00		\$72.00
\$6.00	\$6.00	\$6.00	\$6.00	\$6.00	\$200.00
					\$210.00
		\$60.00			\$159.00
					\$348.45
\$348.45					\$150.00
					\$200.00
		\$200.00			\$150.00
					\$100.00
				\$1168.00	\$2008.00
				\$600.00	\$600.00
			\$375.00	\$675.00	\$2550.00
\$134.00					\$134.00
				\$70.62	\$70.62
\$63.33	\$84.00	\$7.28		\$40.00	\$376.70
					\$10283.36

1990 ZETA NU SIGMA CHAPTER AUDIT

By Robert Johnson

The Audit Committee has examined the financial records of Zeta Nu Sigma Chapter of Phi Beta Sigma Fraternity for the period ending December 31, 1991. Our examination consisted of a review of monthly financial records, reconciling bank statements, and an overall review of treasury practices and procedures.

Based on the work performed, year-end treasury balances appear properly stated and reconciled to year-end bank statements. In addition, chapter expenditures appear properly approved and supported by receipt. To ensure effective treasury controls, the Audit Committee recommends Zeta Nu Sigma Chapter adopt the following recommendations.

1. Establish chapter treasury procedures for future treasurers to follow.
2. To provide a better reimbursement procedure at the end of the chapter meetings.
3. Establish procedures for the audit committee.

ZETA NU SIGMA 1990 CHAPTER REPORT

APPENDIX

ZETA NU SIGMA 1990 CHAPTER REPORT

REGIONAL AWARD

ZETA NU SIGMA HOLDS REGIONAL AWARD

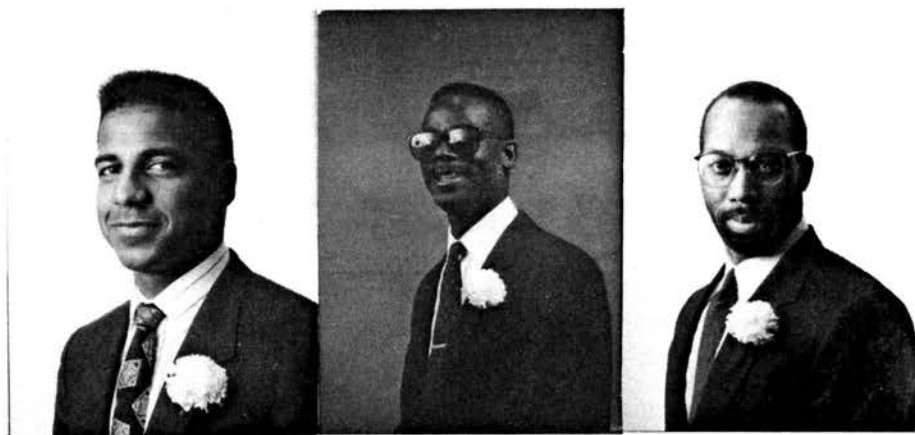
The honor of being named the, "Best Chapter In the Region" is the goal of all Sigma organizations. Zeta Nu Sigma held this honor for 1990 in the Great Lakes Region for the third straight year. The successful orchestration of the Programs was the key to Zeta Nu Sigma's success. This Chapter is on the move, definitely G.O.M.A.B.

Culture For Service - Service For Humanity

Anderson, Keith

Beecham, Mark

Blakey, Jerry



Butchee', Bill

Butcher, Leondias

Cheetham, James



Clark, Otis

Cunningham, James

Doty, Robert



Gaines, Doug

Hutt, Willard

Johnson, Robert



Jones, Perry

Jones, Dr. Robert

Lewis, Robert



Lloyd, Edwin

Martin, Dwane

McGee, Donald



Miller, Devin

Moore, Charles

Porter II, Louis



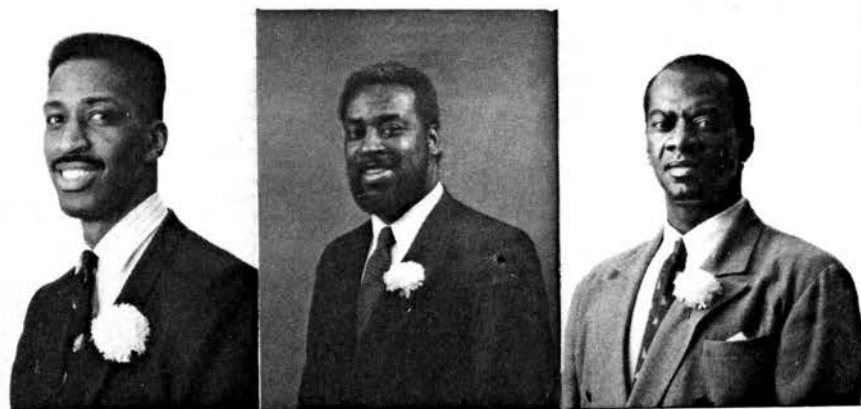
Randle, James

Richburg, Joseph

Robertson, Edward



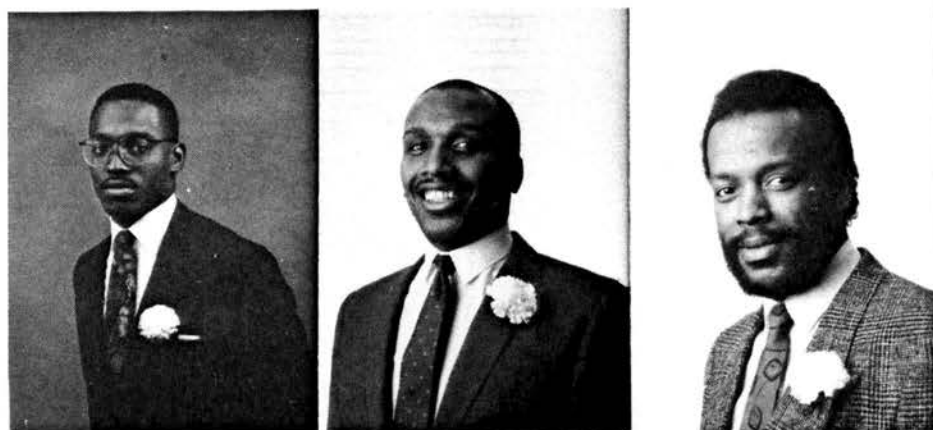
Robinson, George
 Simmons, Calvin
 Stittiam, Derek



Taylor, Steve
 Thomas, Hillary
 Thomas, James



Van Buren, Bobby
 Wade, Percy
 Washington, Vant

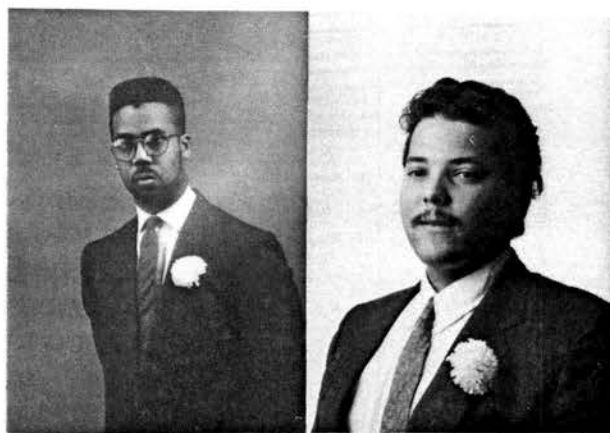


Webb, McClinton
 Weddington, Martin
 Wilderson, Frank



Wilson, Timothy

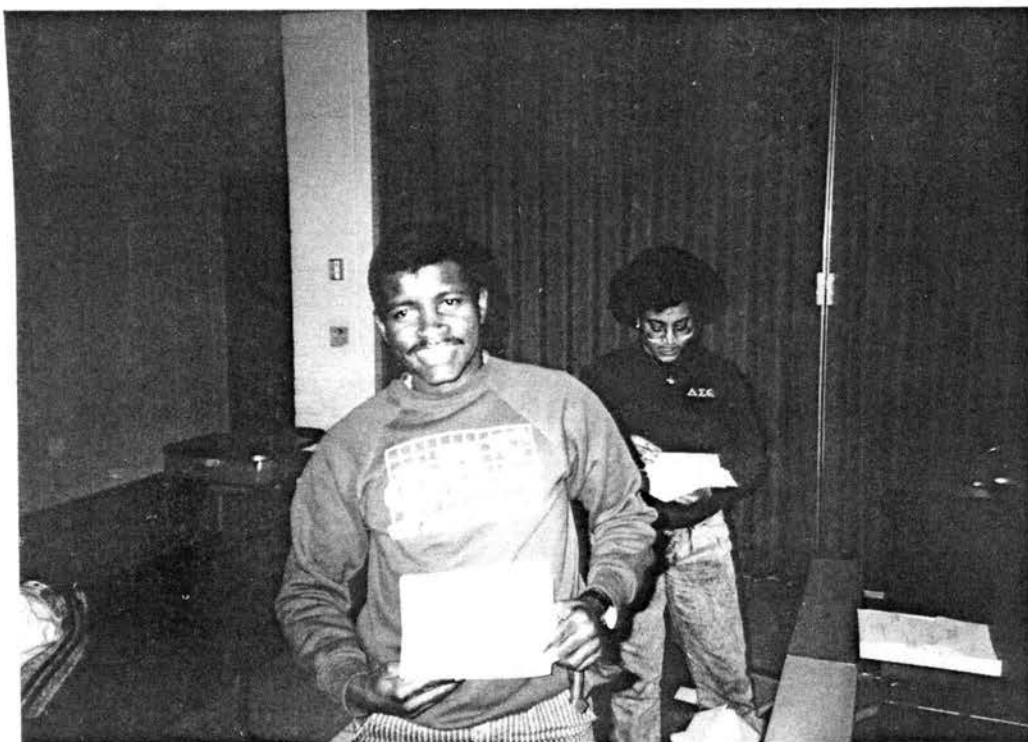
Wulf, Michael





Zeta Nu Sigma welcomes a visit from
two Brothers, who moved on to bigger
better things in the state of California.





Sigmas work on the 1990 Census campaign
with a little help from other Greeks.

