



Lowertown Redevelopment Corporation: Corporate records

Copyright Notice:

This material may be protected by copyright law (U.S. Code, Title 17). Researchers are liable for any infringement. For more information, visit www.mnhs.org/copyright.



EXTERIOR VIEW

THE STUART CORPORATION
DEVELOPER

HERITAGE HOUSE ELDERLY APARTMENTS
ST PAUL, MINNESOTA



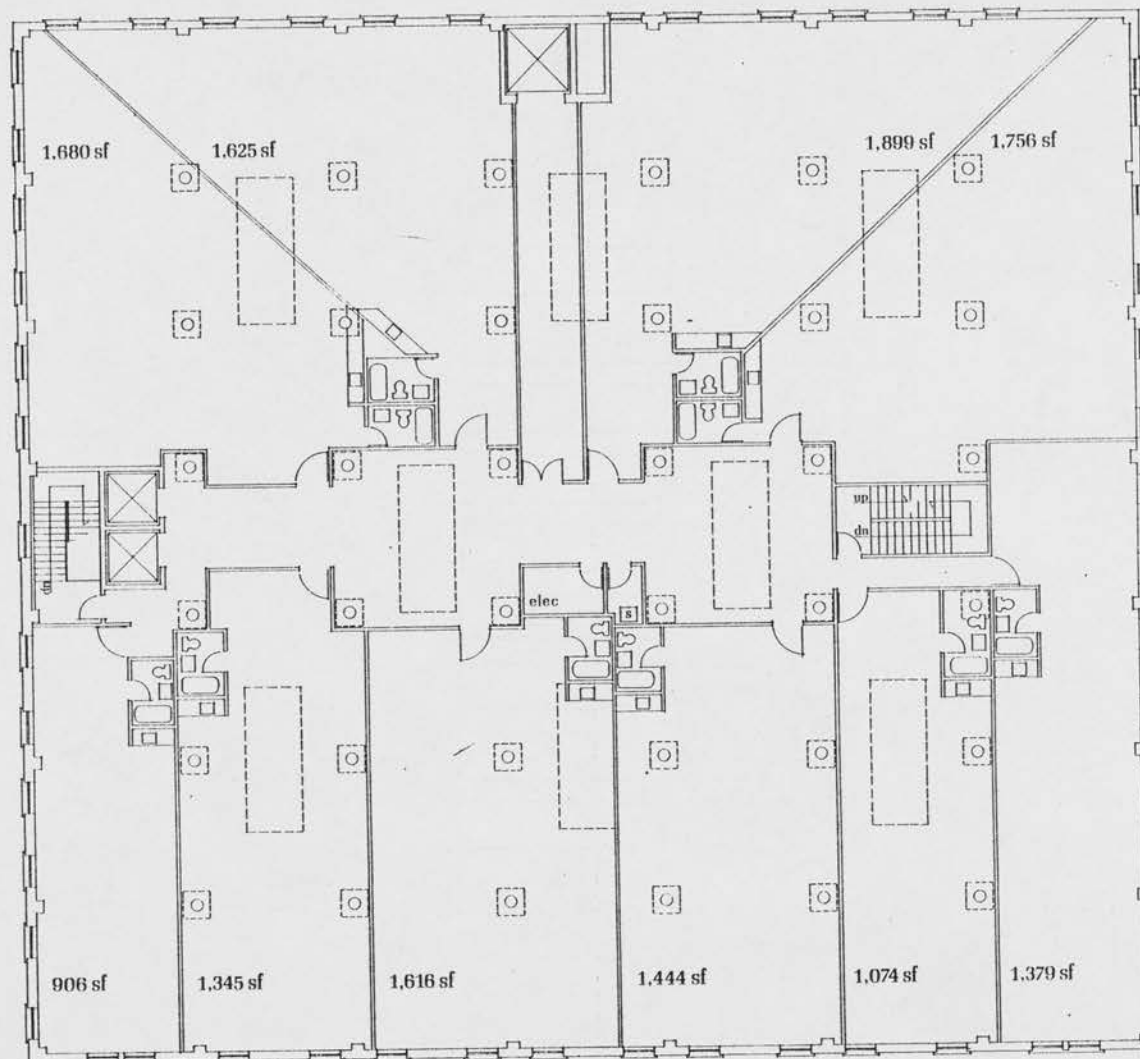
INTERIOR LIGHT COURT

MILLER HANSON WESTERBECK BELL
ARCHITECTS

DESIGN

BLOCK 30

**200 SEVENTH PLACE
thomas lehmann
grad. design studio
fall 1979**

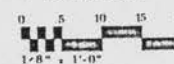


MacDonald and Mack Partnership

750 Grain Exchange Building Minneapolis, Minnesota 55415 612 341 4051

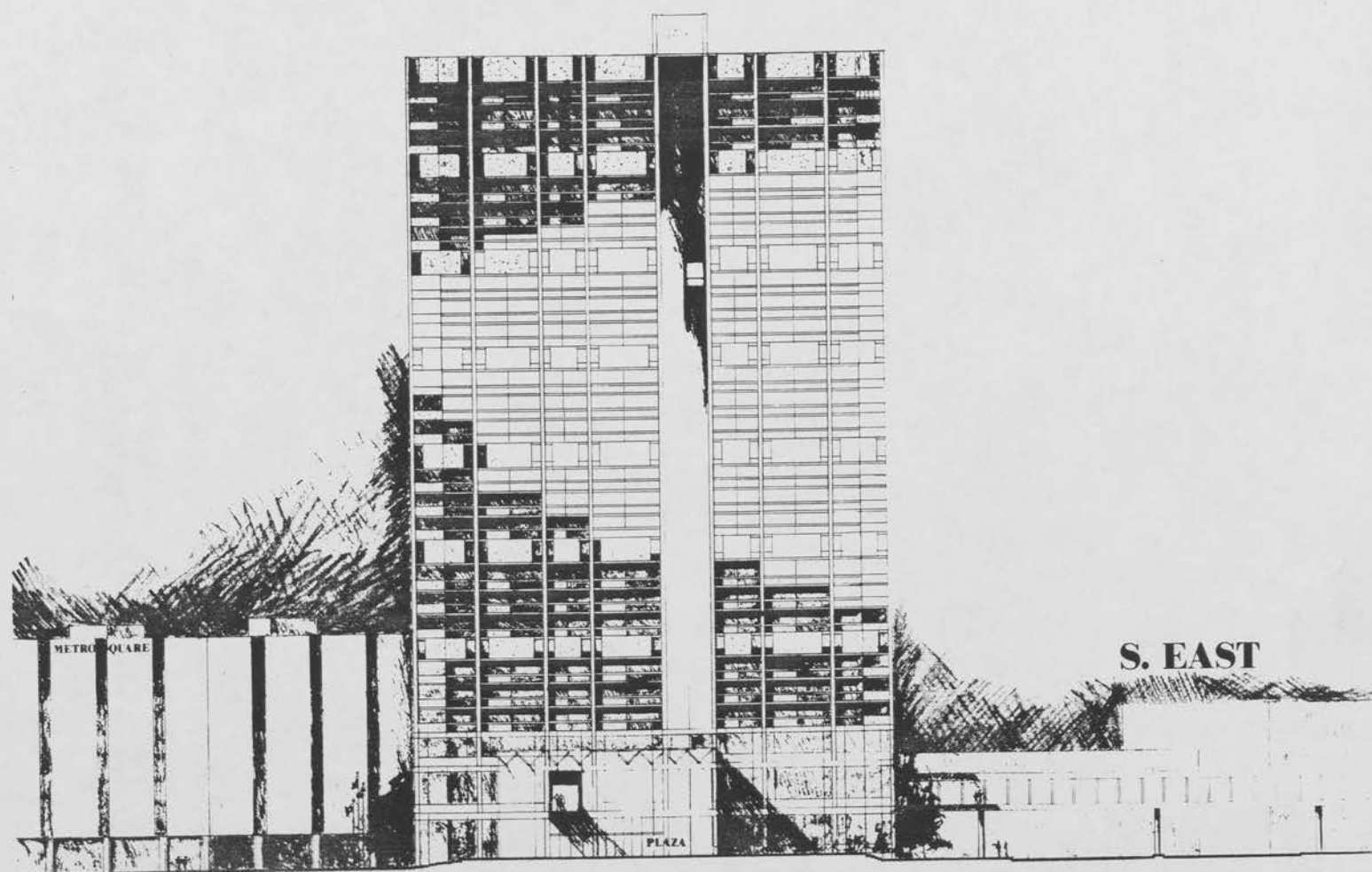
Rayette Building
 Artspace Reuse Project

7 th floor



Schematic

February '79





EXTERIOR VIEW

THE STUART CORPORATION
DEVELOPER

HERITAGE HOUSE ELDERLY APARTMENTS
ST PAUL, MINNESOTA



INTERIOR LIGHT COURT

MILLER HANSON WESTERBECK BELL
ARCHITECTS

HERITAGE HOUSE has 58 apartment rental units on the upper floors of a turn-of-the-century structure that still houses the Butwinick Furniture Company on the street floor. The facade was refurbished, an atrium was cut into the center of the building, mechanical systems upgraded, and contemporary studio apartments were constructed. Rent-up has proceeded at a fast pace and the project has been deemed successful.

ST. PAUL, MN 55101
400 ZIBLEX SUITE 200
NORTHOMI BEDELEVICH CORPORATION