



## Lowertown Redevelopment Corporation: Corporate records

### **Copyright Notice:**

This material may be protected by copyright law (U.S. Code, Title 17). Researchers are liable for any infringement. For more information, visit [www.mnhs.org/copyright](http://www.mnhs.org/copyright).



Lowertown Commons

St. Paul, Minnesota

Interior; Dining Area



Lowertown Commons

St. Paul, Minnesota

Interior; Living/Dining Area





Lowertown Commons

St. Paul, Minnesota

Interior; Living/Dining Area





Lowertown Commons

St. Paul, Minnesota

Interior; Bedroom



Lowertown Commons

St. Paul, Minnesota

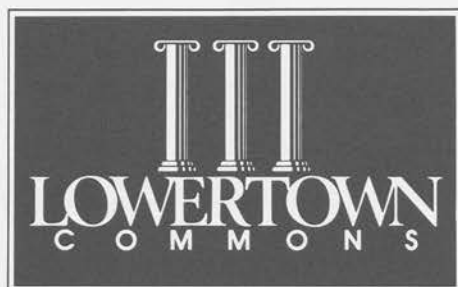
Interior; Bedroom



Lowertown Commons  
St. Paul, Minnesota  
Model Apartment, Bedroom

---

# APARTMENT SELECTOR & FEATURES LIST

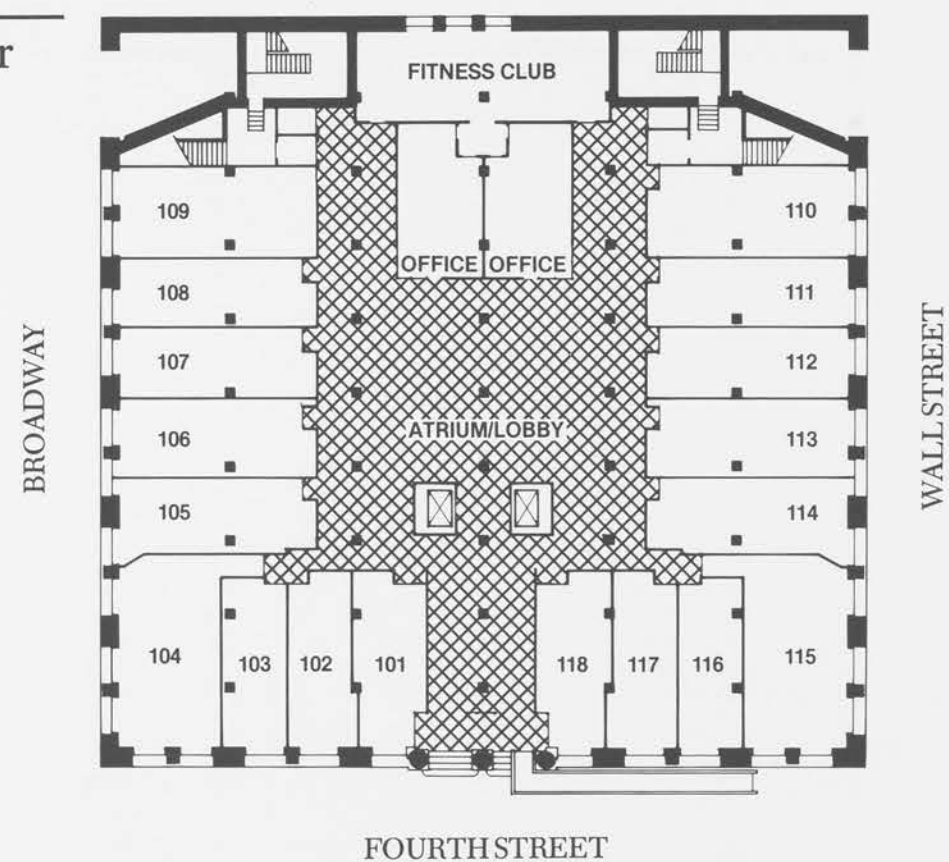


DISTINCTIVE APARTMENTS  
300 East 4th Street, St. Paul, MN 55101

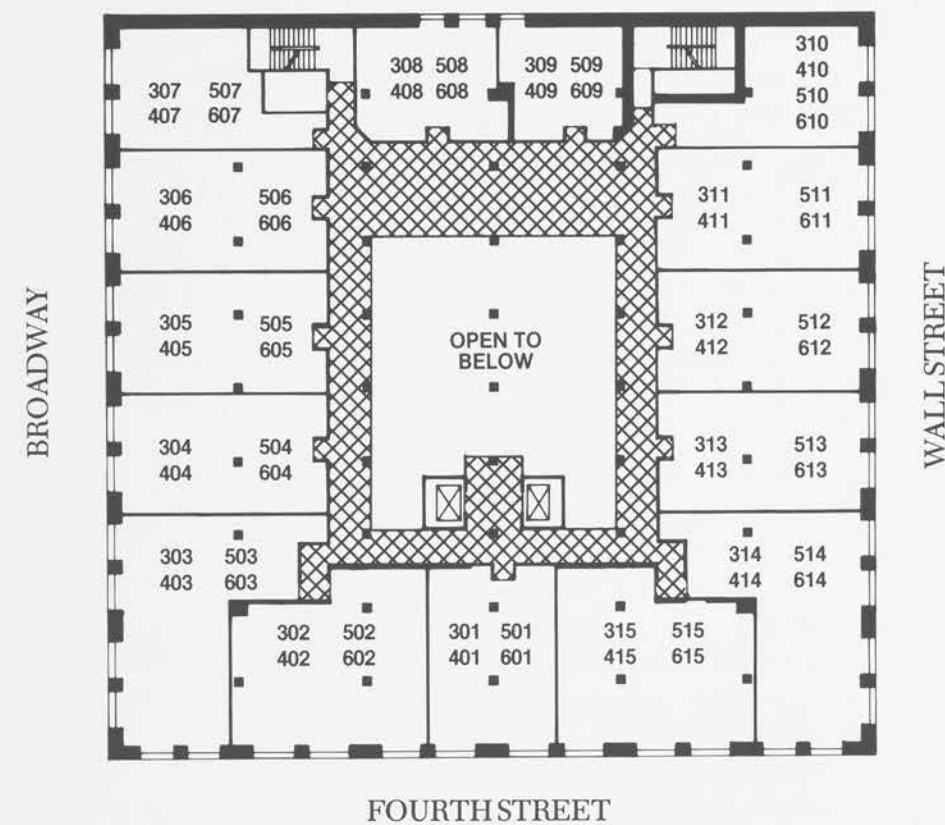
(612) 227-8932



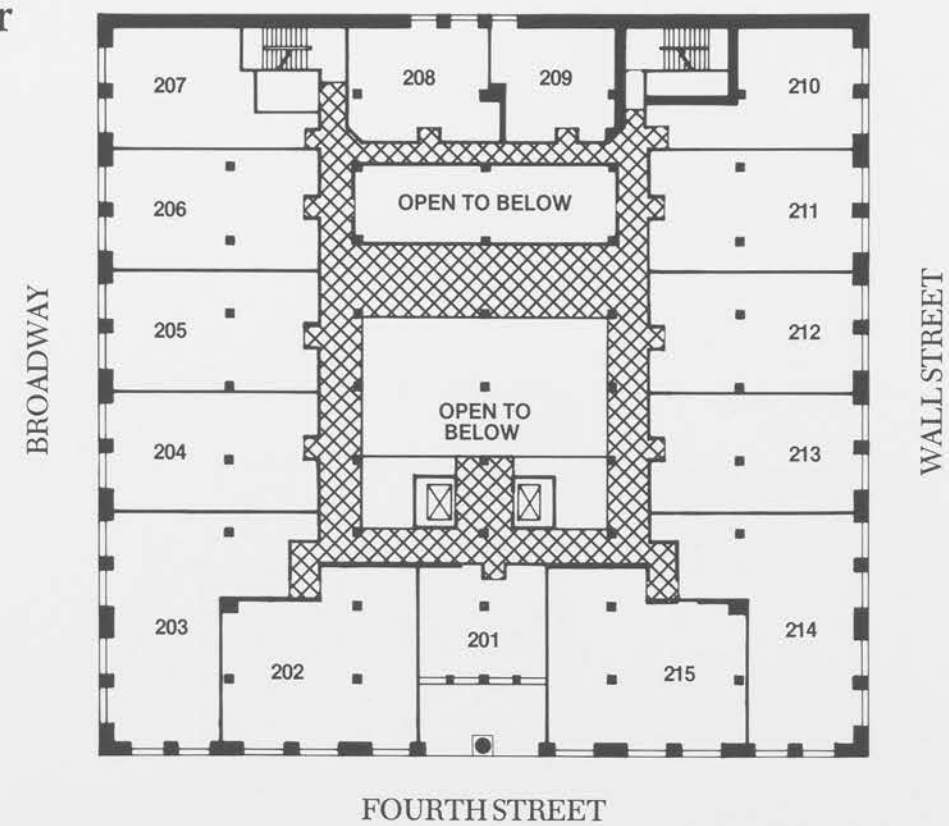
First Floor



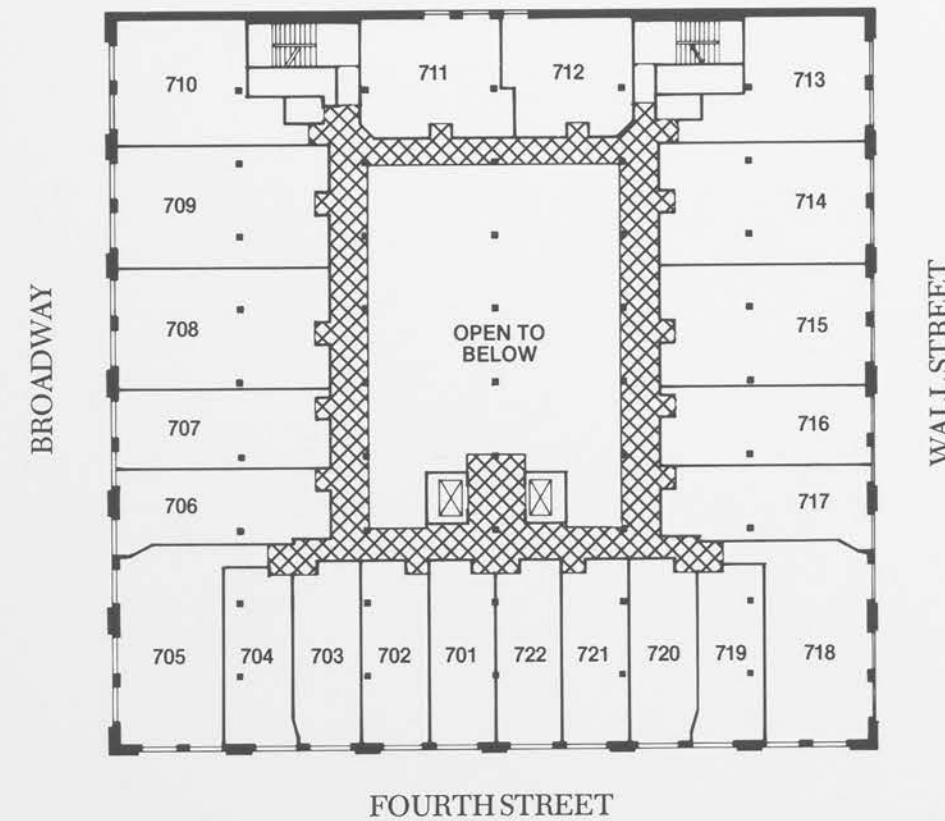
Typical Floor  
Third thru Sixth



Second Floor



Seventh Floor



---

# Lowertown Commons Features List

---

---

## SECURITY SYSTEM

- Telephone intercom system between lobby and apartments with pushbutton admittance system.
- Smoke detectors in every apartment with each apartment as a separate warning zone.
- Double lock system with 1 3/4" solid core door, viewer peephole and doorknocker on all apartment entry doors.
- Fully sprinklered building.

---

## KITCHEN FEATURES

- 15 cu. ft. frost free refrigerator/freezer.
- Three cycle dishwasher.
- Sound-insulated, continuous-feed garbage disposal.
- Self-cleaning electric range complete with timer, clock and oversized burners.
- Eye-level microwave oven with cook top light.
- Stainless steel sink with single lever faucet.
- European-style laminate cabinets with oak trim and coordinated laminate countertop.
- Custom built oak wine rack.
- Service pass-through from kitchen to dining area in most apartments.
- Breakfast bar in most apartments.

---

## BATH FEATURES

- Ceramic tile floors.
- Fully tiled bath enclosure.
- Single knob shower control.
- Built-in cultured marble sink with storage vanity.
- Individual washer and dryer.
- Full width mirrors with Hollywood-style decorator lighting.

---

## ENERGY SYSTEM

- Individually controlled vertical fan coil heating units.
- Individually controlled air conditioning system with thermostats in each apartment.
- Forty gallon fast recovery water heater.
- Energy-efficient construction, including fully insulated double glazed windows and screens, R-30 roof insulation and R-13 outside wall insulation.
- Special exhaust system to keep cooking and smoking odors out of corridors.

---

## SPECIAL FEATURES

- Spectacular seven story atrium bathed in natural light from overhead skylights, highlighted with lush landscaping and two elevated pedestrian walkways.
- Elegant main lobby with luxurious seating areas.
- A private health club for residents featuring sauna, exercise equipment and separate men's and women's lockers and shower facilities.
- Heavy timber columns, beams and ceilings adding warmth and color to many apartments.
- Dramatic bi-level floor plans with balcony dens and/or bedrooms and soaring two-story living rooms in many apartments.
- High ceilings for an airy, spacious feeling in every apartment.
- Wall-to-wall plush pile carpeting throughout.
- Custom designed "Closet Maid" shelving in every apartment.
- Custom designed lighting tailored to each apartment floor plan.
- Oversized windows flooding apartments with natural light and, in many cases, offering sweeping views of the Mississippi River or downtown St. Paul.
- Separate package and mail room.
- Two high speed passenger elevators.
- Trash chutes on each floor.
- Convenient resident parking available.
- Separate tenant storage for each apartment.