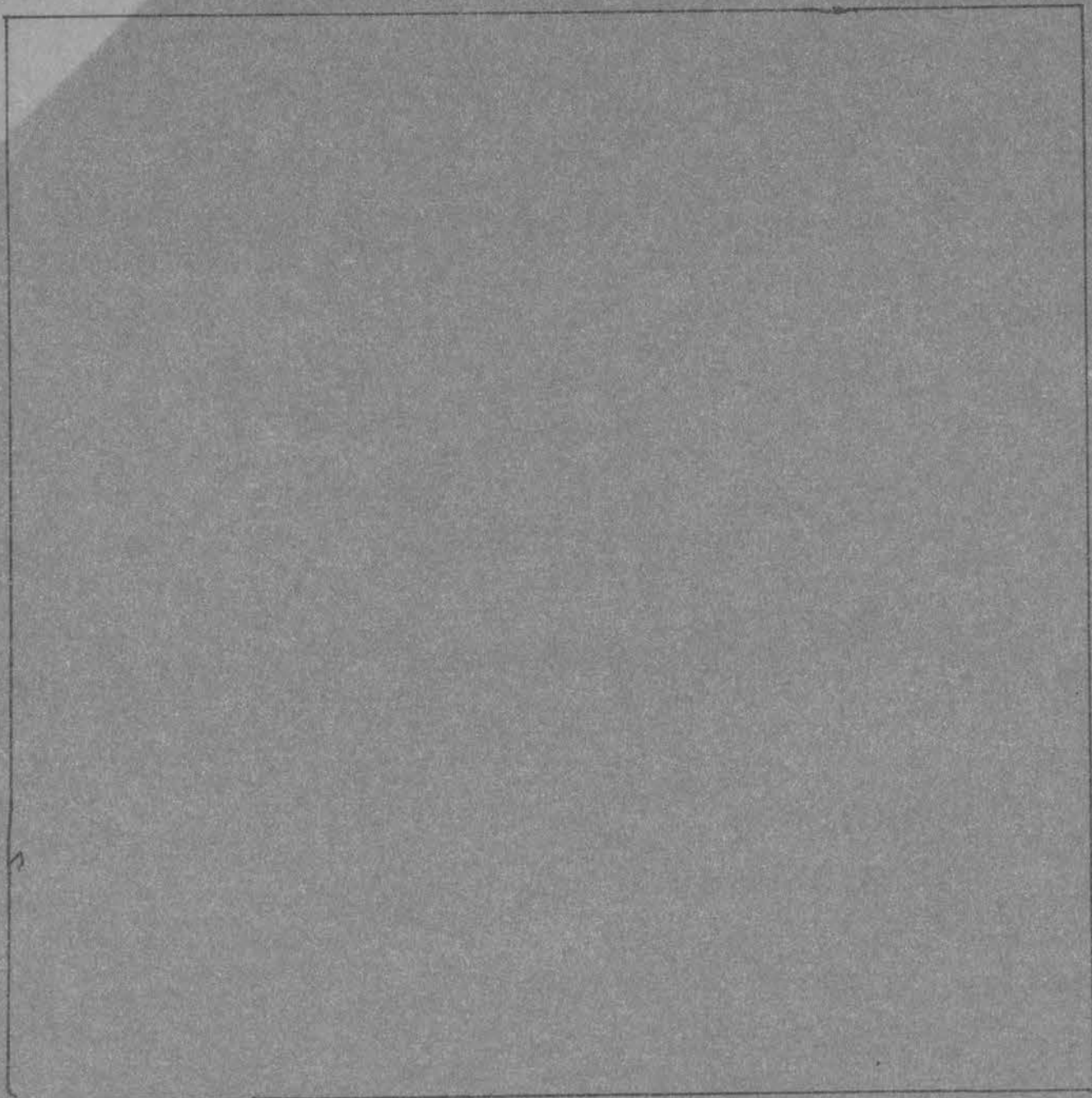


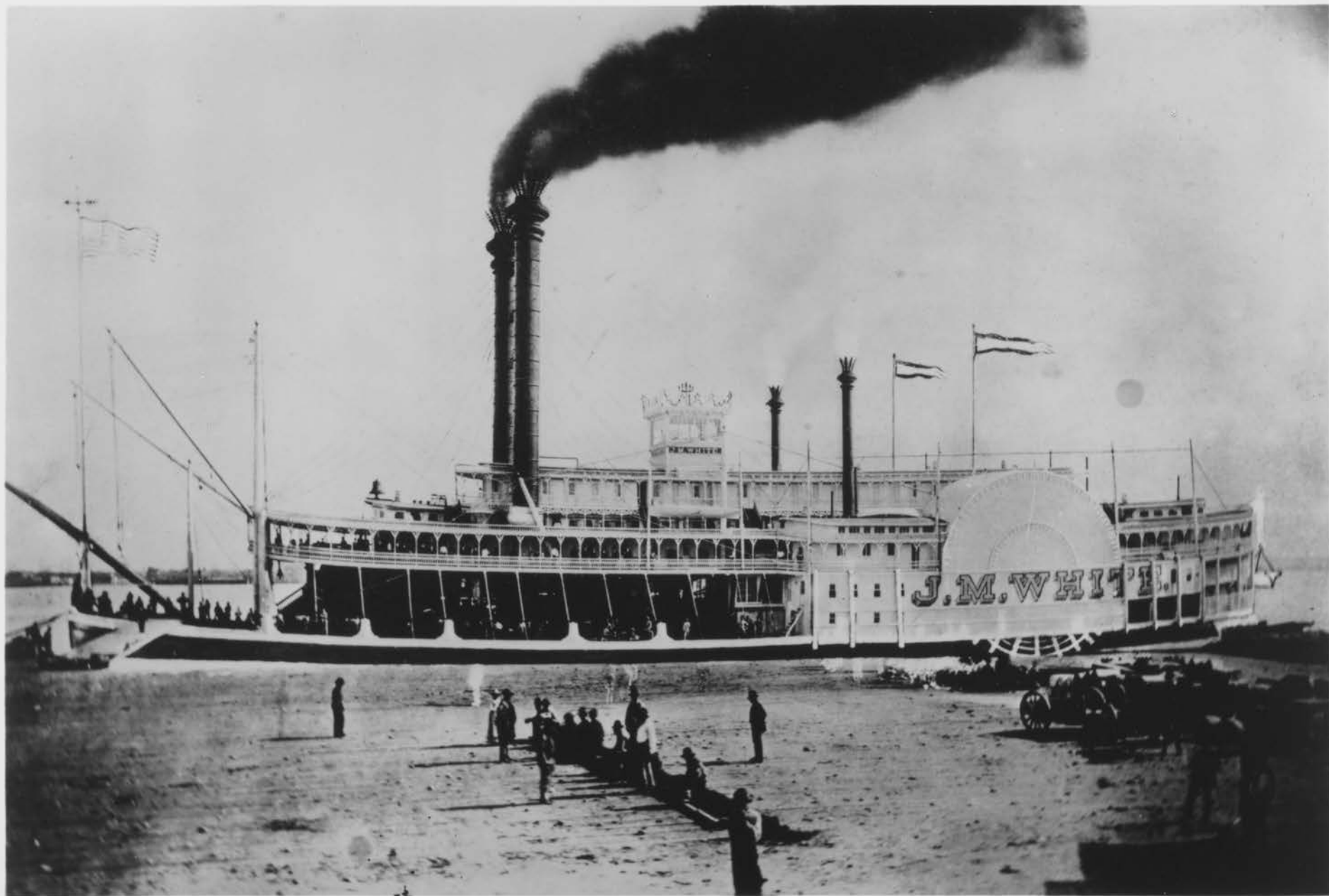


Lowertown Redevelopment Corporation: Corporate records

Copyright Notice:

This material may be protected by copyright law (U.S. Code, Title 17). Researchers are liable for any infringement. For more information, visit www.mnhs.org/copyright.





The AMERICAN QUEEN'S designers used as a blue print the classic design features of the J.M. WHITE. Built in 1878 by the Howard Shipyards and Dock Co., the J.M. WHITE, at 321 feet overall length, was the supreme triumph in cotton boat architecture. The 418 foot long AMERICAN QUEEN's fluted smokestacks, decorated pilot house and double landing stages, mirror the classic design features of the "floating palaces" of the Great Steamboat Era.



COURTESY OF THE DELTA QUEEN STEAMBOAT CO.

BIG WHEEL -- The AMERICAN QUEEN's 60-ton paddle wheel is fitted in place at McDermott Shipyard, Amelia, LA., bringing her one step closer to her historic June 27, 1995 christening in Pittsburgh. The 30-foot long paddle wheel will be driven by a vintage steam engine (c. 1930), the AMERICAN QUEEN's main source of propulsion.



The Delta Queen Steamboat Co.'s grand new paddlewheeler, the *American Queen*, is the latest in a long line of palatial steamboats owned and operated by the 105-year old company. The \$65 million *American Queen*, scheduled to begin service on June 27, 1995, is the culmination of almost two centuries of Steamboatin' design and tradition.

PR 0126 11/94



QUEEN OF THE MISSISSIPPI -- Built in 1976, the **MISSISSIPPI QUEEN** was inspired by Mark Twain's famous quote -- "Someday, they'll build the biggest steamboat the world has ever known; and she'll be long, white and gleaming in the sunshine with her twin black stacks. And that one shall be the Queen of the Mississippi." *The Delta Queen Steamboat Co.'s AMERICAN QUEEN* will further embody Twain's image of the grand river palaces.



The National Historic Landmark DELTA QUEEN gently rolls out of an Ohio River lock. The Legendary DELTA QUEEN, like her sister steamboats, the AMERICAN QUEEN and MISSISSIPPI QUEEN, provides luxurious river passage in grand Victorian style, visiting quaint river towns and discovering grand American traditions along the way.