



The Hyssop.



The Fig.



OUT DOORS.

native of India, but long since ac-
l in Spain, Italy, and several other
Poland and Russia, as well as in
is an article of primary importance
ity.

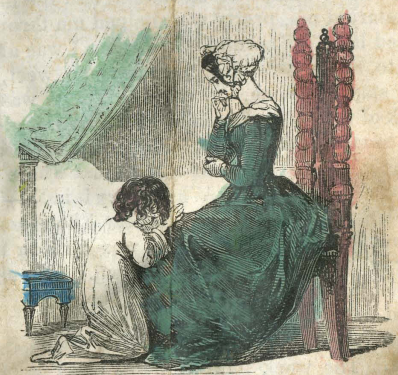
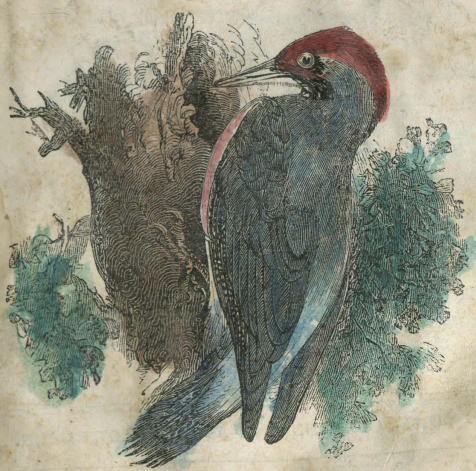
roduced into the North American



to
op
at
be
nd
ax
n-
on
he
nt
er
gh
sit
B-
lg
v

the town

127
1.2



For The Child's Pa

several times urged the "Lon-
of mulberry trees, and ad-

dre
jun
stin
the
ing
of t
his
the
ber
to



t in-
and
y to
tow-
with
shed
ul in
um-
wing
the

ye
in
do
“
lo
n
g
r
a
o
n
fo
er
A
te
to
ai



st
it
e
y
e
s
h
d
s
e
u



A SEWING MACHINE

lishing flatures of silk was removed in your



r
f
v

and that large quantities of it have been





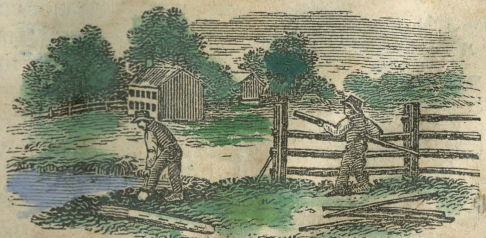
Camp

Ex-President Tyler's House

ENCAMPMENT OF MAX WEBER'S GERMAN TURNER RIFLE REGIMENT, TWENTIETH N. Y. V. R., AT HAMPTON CREEK, VA.—OFFICERS' QUARTERS AT THE SUMMER RESIDENCE OF EX-PRESIDENT TYLER. THE UNION FLAG NOW FLOATS.—FROM A SKETCH BY OUR SPECIAL ARTIST ACCOMPANYING MAJOR-GENERAL BUTLER'S COMMAND.—SEE PAGE 133.



INDIAN WOMEN OF PERU.





From the collections of the Minnesota Historical Society: Alexander G. Huggins and Family Papers.

Copyright in this digital version belongs to the Minnesota Historical Society, and its content may not be copied without the copyright holder's express written permission. Users may print, download, link to, or email content, however, for individual use.

To request permission for commercial or educational use, please contact the Minnesota Historical Society.

www.mnhs.org