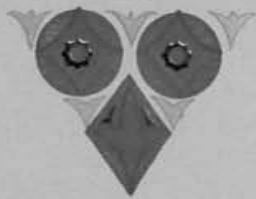


# MINAKI



ONTARIO - CANADA



## CANADIAN NATIONAL

*LARGEST RAILWAY SYSTEM IN AMERICA*



# MINAKI LODGE



A CANADIAN  
NATIONAL  
SUMMER  
HOSTELRY



PRINTED IN CANADA



# MINAKI LODGE

## ON THE WINNIPEG RIVER

And the evening sun descending  
Set the clouds on fire with redness,  
Burned the broad sky, like a prairie,  
Left upon the level water.  
One long track and trail of splendor,  
Down whose stream, as down a river,  
Westward, westward Hiawatha  
Sailed into the fiery sunset,  
Sailed into the purple vapors,  
Sailed into the dusk of evening,

So it was that Henry Wadsworth Longfellow, in his great Indian poem of Hiawatha, sang of the departure of the Inspired Teacher and benefactor of his people to the "Beautiful Country, the Land of the Hereafter."

# ~ MINAKI LODGE ~



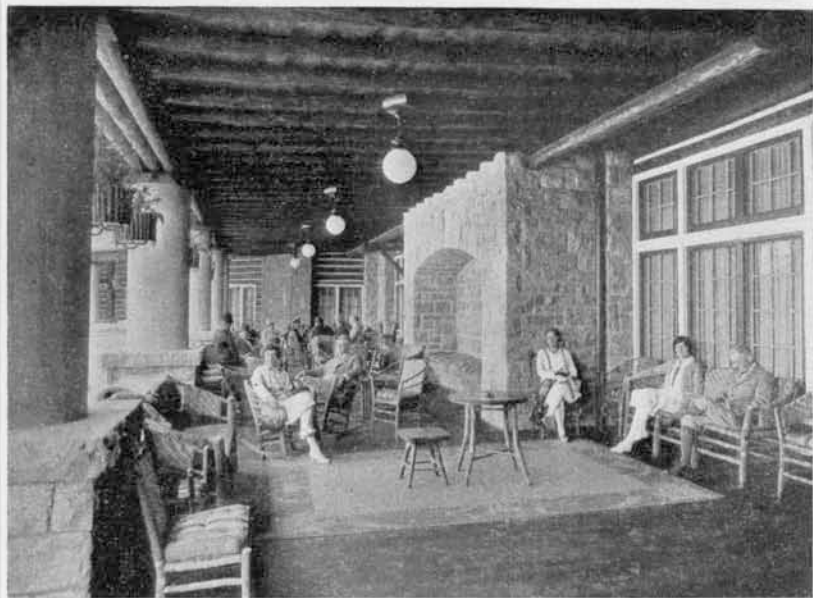
*Minaki Lodge on a broad expanse of the Winnipeg River*

IN every nation of the North American Indians, the "Happy Hunting Ground" has been set westward, toward the trail of the setting sun, and there yet remain remnants of a legend from the tragic and unfortunate Huronia, that the "Beautiful Country of the Hereafter" lay, for their warriors, "to the West, beyond the great fresh waters, in a smiling land of forest and stream, midway 'tween two big lakes, so that waterways ever run strong and fish and game await the hunter in plenty." Unfortunately, it is all too probable that even this fragment of Huron belief is apocryphal, for records show that the nation virtually was exterminated, its survivors uprooted from the country of their forefathers and the villages laid waste by the implacable hatred of the Iroquois Confederation.

It may be, however, that long before the white man came, wandering braves from other tribes had journeyed to Huronia and had told something of the wonders of that vast land which bordered the Winnipeg River, between the Lake of the Woods and Lake Winnipeg. Minaki, the Indian tongue named it, and this stood for "The Beautiful Country," a land to which Hiawatha may well have gone when he sailed "into the fiery sunset", and which, to-day, would enchant the heart of any Indian brave for its sheer beauty, tumbling rivers and widening lakes teeming with fish, and untrodden forests abounding with game.



## ~ MINAKI LODGE ~



*One of the Verandahs of the Main Lodge*

And it is here, in the heart of a virgin country, that possibly was the Hurons conception of the wonderful hunting ground which Manitou the Great had fashioned for them in the Hereafter, that the Canadian National Railways have built an ideal summer resort in Northern Ontario, retaining for its name the Indian word which so adequately describes its charm and beauty.

Nor alone is it in fancy that Minaki, "The Beautiful Country," lives in romance. Stern reality has written many romantic pages in its annals. La Verandrye, that picturesque figure of New France, followed the moonbeam trail down the Winnipeg almost two centuries ago, when he crossed the uncharted plains to the uprising buttresses of the Rockies, searching for that myth of early explorers, the "Western Sea." Since then it has been in the path of all adventurous pathfinders who braved privation and the perils of the unknown to penetrate the Great West, and eventually, to behold the boundless waters of the Pacific from the landlocked prairies. The great Alexander Mackenzie, most noted adventurer of the North West, passed over its waters, as did scores of intrepid voyageurs of the fur trading companies. For centuries before railways were conceived, Minaki was a part of the "Canoe Express" route and its traditions are rich in stories of forays and commerce. Sentinel pines, still standing along the river rim, mark the route of Wolseley's men, when, in 1870, they passed up its waters in canoes and crude craft to quell the

## ~ MINAKI LODGE ~



*The Rotunda of the Main Lodge*

rebellion led by Riel, in the North West. This is the last of the great pictures painted upon the Minaki canvas, for now, where the war drums of these seven hundred soldiers once echoed, come flotillas of merrymakers and the lobstersticks serve to guide them, not on the grim errand of war or the hazard of fur trading, but to peaceful fishing grounds and natural beauty spots.

### *Minaki Lodge*

In designing the Lodge and its outbuildings nothing has been left undone to meet nature in her most whimsical mood, while the landscape gardeners have seen to it that its turf of green, flower beds, and rose garden, add to the harmony of its setting. Built of logs, rising upon rough stone foundations, it harmonizes naturally with its surroundings as if it were a part of the land on which it rises. The general design is an original one and consists of a large rotunda, from which, at slight angles, radiate six wings. Two of these face upon the river and are connected by a wide verandah, fronted by stone and with large stone pillars supporting the roof. Of the wings, one is a dining room, another the ball room, which may also be used for conventions or large parties; the third is a ladies' lounge, while two others contain bedrooms for guests. The fifth is used by the management and its office, and the sixth for the kitchen, bakery and staff dining room. The rotunda is so arranged that,

## ~ MINAKI LODGE ~



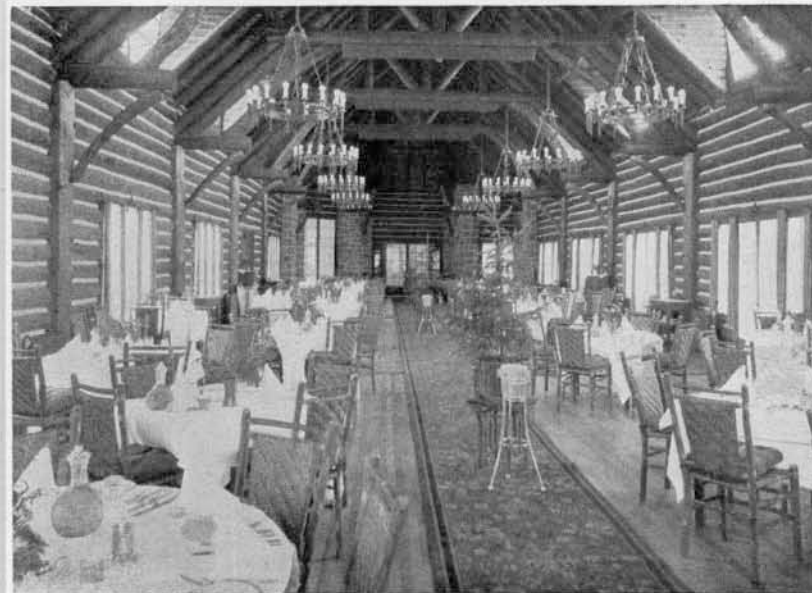
*The Ladies' Lounge*

on one side, a spacious verandah faces the court and golf course, while the other gives a view of the river. So carefully have the wings been planned that they look out upon both the river and the woodlands.

But it is not until one enters the rotunda of the Lodge itself that the full beauty of the architectural setting is to be seen. It is a simple beauty and all the more beautiful for its simplicity. The walls are of peeled cedar logs, cut from within a few miles of the grounds, and stained a soft brown, which contrasts pleasantly with the grey granite stones, quarried from rock on the site, that help support the roof. The latter has an average height of thirty feet from the floor, though the centre beam is a good fifty feet high. Broad windows, extending almost to the verandah floor, give an unobstructed view of both the grounds, and river.

Opposite the French doors, at the main entrance, is a great stone fireplace so wide that full-length logs may be burned, and in the centre of the mantel is a hand-made model of a "three-decker" man-o'-war of Nelson's day, whose weather-beaten tones blend into the colorings of the logged walls. The decorations are equally unobtrusive and harmonious—old plate, muskets and ancient

## ~ MINAKI LODGE ~



*The Dining Room*

swords, grouped about shields, break the bareness of the walls; while orange coloured lights, hanging from electroliers of wrought iron, shed a soft radiance that is amplified by wicker lamps standing beside groups of wicker furniture for the convenience of guests. The attractive effect is heightened by cretonne drapes, thick rugs and an orchestra stand of rustic touch. Even the desk and office is in keeping with the general effect and, beside the guest when he registers, is a grandfather's clock, which chimes off the hours and quarters in mellow tones, that is fashioned of cedar boughs and wood and fits so unassumingly into the picture that but for its musical notes would pass quite unnoticed.

To dwell upon the other features would be to dilate upon the conveniences afforded by a metropolitan hotel. There is the barber shop, the turkish bath—yes, even away out in Northern Ontario turkish baths may be had—the manicurist, the "bobber shop", where the fair sex may secure any thing from a "Boot's bob" to a permanent wave, the barber shop, proper, for the edification of the male sex, the locker room and showers for golf enthusiasts, and, possibly more important than anything else, the "snack room". From the bathers' dressing rooms it is but a hop-skip-and-jump to the bathing platform and the cool, clear water. Right here it is well to note that the water in these parts has

## ~ MINAKI LODGE ~



*The Fire-Place in the Rotunda*

a velvety, exhilarating quality not often encountered in lake swimming. It is exactly the right temperature. You slide or dive into deep water, while for the children a safe, sandy beach is to be found just around the cove.

About the grounds, yet set away at a distance so that they fit as naturally into the scene as the fringe of the evergreen forest, are the bungalows, one, a ten-room building, and six four-room buildings; and each is provided with a central reception room where afternoon tea may be served or cards played, or, if desired on tables placed on the wide screened verandah. The appointments are of the best, electric light, bath, hot and cold running water and telephone. As in the main Lodge wing, suites, with connecting bath, are at the disposal of guests.

All the bungalows and the main lodge are steam heated. Minaki Lodge has accommodation for 200 guests.

It may be added that the fire protection at Minaki is one of its features. Not even a city of half a million people is better protected. The log bungalows and out-buildings are so constructed and treated in the materials that they are as near fireproof as is humanly possible. Being only one storey in height, risk is reduced to a minimum and with the buildings, set a good fifty yards apart from

## ~ MINAKI LODGE ~

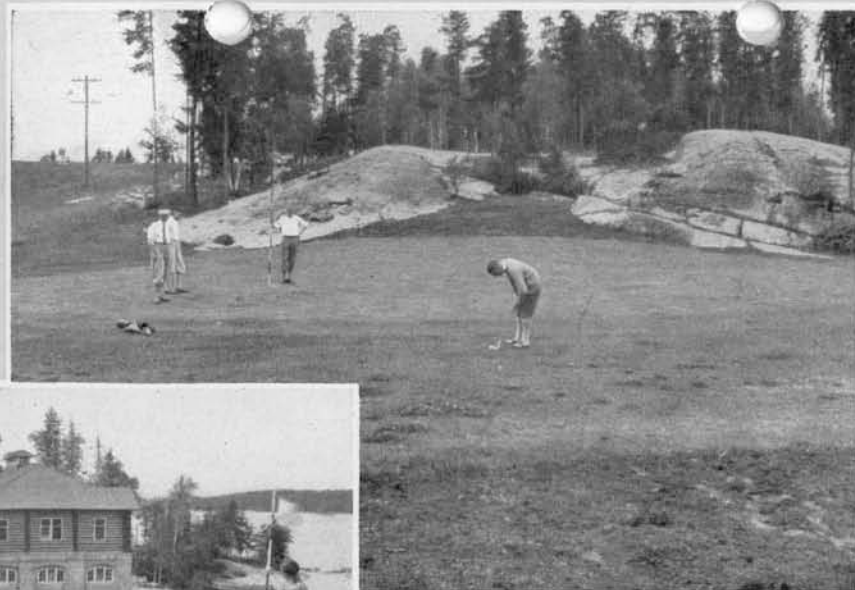


*The Snack Room*

each other, the danger of fire spreading is almost negligible. To combat the remote danger of fire, the Management has left nothing undone. A night watchman makes his rounds hourly and hydrants are placed at strategical points throughout the resort. There is hose stacked at each hydrant, which can be drawn into action upon a minute's notice, and the trained fire brigade will respond to an alarm without a second's delay. Then there is a water pressure which is the equal to that of a big city and the alarm boxes provide an extensive system that brings a protective force into the heart of primeval Ontario that many towns in the older section may envy but cannot equal.

**CANADA WELCOMES TOURISTS  
PASSPORTS NOT REQUIRED**





Just as if the Lodge were a golf club you step off the verandah to the first tee, and the home green is in close proximity.  
Minaki Lodge nine hole golf course has a real appeal to golfers.

MINAKI - "Beautiful Country"

MINAKI - "Beautiful Country"

# ~ MINAKI LODGE ~



*Looking up the Winnipeg River*

## GOLF

Just as if the Lodge were a Golf Club, one steps off the verandah to the first tee and the home green is in close proximity. Spectators on the verandah are thus privileged to witness the start and finish of the game.

The first and ninth are holes of distinct individuality, each requiring two well-played shots to get home. The lake is to the left, the fairways sloping in that direction with high wooded land to the right. The greens are boldly contoured and well trapped. Another pair that can be grouped are the second and sixth, both fine two shot holes with the tee shots over the brow of a hill and undulating fairways sloping down to nicely shaped greens.

The third is long and straight from a high tee over the fairway to an elevated green. This is partly paralleled by the seventh, which is the longest of the one shot holes.

The fourth is a pleasant drive and pitch. The other two holes are mashie and iron shots so that there is a fine variety. The fairways are of ample width, but being generally through the woods put a premium on direction. The greens are well trapped but the bunkers are not exceptionally severe. The putting surfaces have natural undulations and much variety.

# ~ MINAKI LODGE ~



*Large motor boats take guests of Minaki Lodge to the many places of interest on the Winnipeg River*

## CANADIAN NATIONAL RAILWAYS SCORE CARD

HOLE NO.	LENGTH YARDS	PAR	Where strokes are taken	1	2	3	4	WON + LOST - $\frac{1}{2}$ O
1	355	4	(11)					
2	370	4	(7)					
3	395	4	(1)					
4	295	4	(5)					
5	155	3	(17)					
6	380	4	(3)					
7	190	3	(15)					
8	180	3	(13)					
9	345	4	(9)					
Out	2665	33						



## ~ MINAKI LODGE ~



*Comfortable and centrally heated bungalows at Minaki*

### TENNIS

The courts, set very near the golf course and the main lodge, are scientifically constructed with an en tout cas surface, a special clay imported from Great Britain and very precious to the tennis devotees' ideas, which with constant rolling and watering become smooth and true as a billiard table. Such are the courts upon which national championships are played and in the near future, doubtless, the best of Eastern Canada will gather to battle upon the Minaki courts.

### FISHING

An every-day fisherman will find plenty of sport within easy distance of the Lodge and the keen fisherman, accompanied by excellent guides, in reliable motor boats, or specially constructed skiffs with outboard motors, may obtain good fishing with the minimum of trouble. Pike, pickerel and that good fighter, the maskinonge, are native to the waters, and afford splendid trolling. There are some black bass and speckled trout. An hour's paddle from the Lodge, followed by an easy half-mile portage through pleasant woods lies Vermillion Lake where there are grey trout.

## ~ MINAKI LODGE ~



*A bedroom in one of the bungalows*

### MOTOR BOATING

Large motor boats from MINAKI LODGE take parties of guests on many outings, from one lake to another, passing hundreds of islands amidst scenery which cannot be translated into words, over waters so full of lore of the old-time tales, waters placid or foaming with waterfalls and rapids. One of the loveliest is to Kenora, twenty miles south where, at The Dalles, there is a narrow rock-bound channel, always mentioned in the writings of the early travellers.

Another all-day trip is to White Dog Falls, about fourteen miles down this ancient highway. As one speeds over the lakes, dotted with islands, one may glimpse, through the trees, many summer homes and in the sheltered bays many boat landings jut into the blue waters.

### BOATING, CANOEING, BATHING

The boathouse at the Lodge has a fine collection of craft of all kinds. There are numerous canoes, row boats, motor launches and outboard motor boats.

For bathing there is every facility and the diving boards, dock floats, etc., are up-to-date, while for the kiddies there is a protected strip of sand beach.

## ~ MINAKI LODGE ~



*Championship tennis courts at Minaki*

### HOW TO REACH MINAKI

Minaki is situated on the main line of the Canadian National Railways, 114 miles east of Winnipeg, and passengers have choice of two excellent trains: "The Continental Limited" and "The Confederation."

"The Continental Limited" runs daily in either direction between Montreal and Vancouver, via Ottawa, North Bay, Cochrane, Winnipeg, Saskatoon and Edmonton; traversing The Yellowhead Pass, Jasper National Park and Mount Robson Park at the easiest gradient and lowest altitude of all Transcontinental Lines.

"The Confederation" operates daily west and east bound between Toronto and Vancouver, with through standard sleeping cars, during tourist season.

"The Confederation" and "Continental Limited" comprise through all steel equipment of latest design, including radio-equipped Compartment, Observation Library Cars, standard and tourist sleeping cars. Sleeping and Dining car services are unexcelled.

### STOP-OVER PRIVILEGES

So that tourists travelling across Canada may stop over at Minaki, arrangements have been made whereby all first-class passage tickets via this route are valid for stop-over.

## ~ MINAKI LODGE ~



*A View of the Winnipeg River from Minaki Lodge*

### FISHING

#### OPEN SEASONS AND REGULATIONS, MINAKI DISTRICT

*(Subject to change by Provincial Legislature as conditions may warrant)*

Speckled Trout—May 1st to September 14th inclusive—10 pounds, but no greater number, than 20 in one day.

Bass—July 1st to November 30th inclusive—8 in one day, not to be less than 10 inches in length.

Pickereel—May 16th to April 14th next, inclusive—12 in one day.

Maskinonge—July 1st to November 30th inclusive—4 in one day.

Salmon, Grey or Lake Trout—No closed season—5 in one day.

### ANGLING PERMITS

Residents of Ontario, no license required.

Non-Residents of the Province, \$5.50.

MINAKI AFFORDS COMPLETE IMMUNITY FROM HAY FEVER

# ~ MINAKI LODGE ~



*In front of Main Lodge*

	GOLF	\$ 1.50 per day 8.00 per week 25.00 per month 45.00 per season
Green Fee .....		
Caddy Fees:		
Class "A" .....	\$	.75 for 18 holes .40 for 9 holes
Class "B" .....	\$	.50 for 18 holes .25 for 9 holes
	BOATING	\$ .50 per hour 1.50 per day 7.00 per week
Row-boats and Canoes .....		
Boats with outboard motors:		
With driver .....	\$	2.00 per hour
Without driver .....	\$	1.00 per hour
Launches .....		3.50 to 5.00 per hr.

# ~ MINAKI LODGE ~



*The waters of the Winnipeg River have a velvety, exhilarating quality, which make aquatic sports a real delight*



# MINAKI LODGE

## CANADIAN NATIONAL RAILWAYS

### OFFICERS OF THE TRAFFIC DEPARTMENT

A. T. WELDON, Vice-President.....	Montreal, Que.
H. H. MELANSON.....	General Passenger Traffic Manager..... Montreal, Que.
C. W. JOHNSTON.....	Asst. General Passenger Traffic Manager..... Montreal, Que.
N. CREELMAN.....	Passenger Traffic Manager..... Winnipeg, Man.
M. F. TOMPKINS.....	Traffic Manager..... Moncton, N.B.
C. K. HOWARD.....	General Tourist Agent..... Montreal, Que.
A. A. GARDINER.....	General Passenger Agent, Steamship Traffic..... Montreal, Que.
F. W. ROBERTSON.....	General Passenger Agent..... Moncton, N.B.
E. C. ELLIOTT.....	General Passenger Agent..... Montreal, Que.
H. C. BOURLIER.....	General Passenger Agent..... Toronto, Ont.
A. B. CHOWN.....	General Passenger Agent..... Chicago, Ill., U.S.
OSBORNE SCOTT.....	General Passenger Agent..... Winnipeg, Man.
G. A. McNICHOLL.....	General Passenger Agent..... Vancouver, B.C.
D. O. WOOD.....	General Freight Traffic Manager..... Montreal, Que.
R. L. BURNAP.....	Asst. General Freight Traffic Manager..... Montreal, Que.
L. MacDONALD.....	Freight Traffic Manager..... Montreal, Que.
E. F. FLINN.....	Freight Traffic Manager..... Chicago, Ill., U.S.
W. G. MANDERS.....	Freight Traffic Manager..... Winnipeg, Man.
R. W. LONG.....	Asst. Freight Traffic Manager..... Toronto, Ont.
R. J. FOREMAN.....	General Foreign Freight Agent..... Montreal, Que.
W. C. MUIR.....	Can. Mgr. Can. National Express..... Montreal, Que.

WM. PHILLIPS.....	Manager Industrial Dept..... Montreal, Que.
-------------------	---

### PASSENGER AGENCIES

(Canada and United States)

Boston, Mass.....	H. F. Tilley.....	201 Province Bldg., 333 Washington St.
Belleville, Ont.....	H. C. Thompson.....	243 Front St.
Brantford, Ont.....	J. T. O'Neill.....	153 Colborne St.
Brockville, Ont.....	M. C. Dunn.....	10 Courthouse Ave.
Buffalo, N.Y.....	H. M. Morgan.....	420 Main St., Liberty Bank Bldg.
Calgary, Alta.....	J. H. Norton.....	218 Eighth Avenue West
Charlottetown, P.E.I.....	P. W. Clarkin.....	C.N. Ry. Station
Chicago, Ill.....	C. G. Ortenburger.....	108 West Adams Street
Cincinnati, Ohio.....	F. H. Bremer.....	Dixie Terminal Bldg., 49 East Fourth St.
Cleveland, Ohio.....	H. G. Pentland.....	Union Trust Bldg., 925 Euclid Ave.
Detroit, Mich.....	H. L. McCaughey.....	1259 Griswold Street
Duluth, Minn.....	L. F. Lorentz.....	3044 West Grand Blvd.
Edmonton, Alta.....	W. E. Bishop.....	430 West Superior Street
Grand Rapids, Mich.....	J. Madill.....	Cor. Jasper and 100th Street
Guelph, Ont.....	C. A. Justin.....	G. T. Railway Station
Halifax, N.S.....	B. A. Rose.....	11 and 13 Wyndham Street
Hamilton, Ont.....	J. J. Leydon.....	107 Hollis Street
Kansas City, Mo.....	Jas. Anderson.....	7 James Street North
Kingston, Ont.....	A. Pick.....	334-335 Rly. Exchange Bldg., 706 Grand Ave.
London, Ont.....	J. P. Hanley.....	Cor. Johnston and Ontario Streets
Los Angeles, Cal.....	R. E. Ruse.....	406 Richmond, Cor. Dundas Street
Minneapolis, Minn.....	H. R. Bullen.....	607 South Grand Ave.
Montreal, Que.....	G. A. North.....	518 Second Avenue South
New York, N.Y.....	M. O. Datoe.....	230 St. James Street
North Bay, Ont.....	F. A. Young.....	505 Fifth Ave.
Ottawa, Ont.....	C. E. Jenney.....	505 Fifth Ave.
Peterboro, Ont.....	C. W. Murphy.....	81 Main Street
Philadelphia, Pa.....	P. M. Buttler.....	93 Sparks Street
Pittsburg, Pa.....	J. B. Doran.....	324 George Street
Portland, Me.....	M. J. Woods.....	Franklin Trust Bldg., 1500-1506 Chestnut St.
Portland, Ore.....	W. J. Burr.....	505 Park Building, 355 Fifth Ave.
Prince Rupert, B.C.....	G. A. Harrison.....	G. T. Railway Station
Quebec, Que.....	A. B. Holtorp.....	Pacific Bldg., 302 Yamhill St.
Regina, Sask.....	R. F. McNaughton.....	528 Third Avenue
San Francisco, Cal.....	J. E. LeBlanc.....	7 DuFort St.
Saskatoon, Sask.....	J. J. Aubin.....	231 St. Joseph St., St. Roch.
Seattle, Wash.....	S. M. Greene.....	1874 Scarth Street
Sherbrooke, Que.....	W. J. Gilkerson.....	689 Market Street
St. Catharines, Ont.....	Wm. Stapleton.....	103 Second Avenue South
St. John's, Nfld.....	J. F. McGuire.....	1329 Fourth Ave.
St. Louis, Mo.....	A. M. Stevens.....	23 Wellington St., North
St. Paul, Minn.....	C. J. Harris.....	106 St. Paul Street
Sudbury, Ont.....	L. C. Lynds.....	49 King Street
Toronto, Ont.....	A. Green.....	Board of Trade Bldg., 155 Water St., East
Vancouver, B.C.....	W. H. Burke.....	Boatmen's Bank Bldg., 314 North Broadway
Victoria, B.C.....	A. H. Davis.....	83 East Fifth Street
Washington, D.C.....	A. G. Bell.....	26 Elm Street West
Windsor, Ont.....	R. E. Richmond.....	Cor. King and Yonge Streets
Winnipeg, Man.....	K. E. McLeod.....	527 Granville Street
Woodstock, Ont.....	C. F. Earle.....	911 Government Street
	G. L. Bryson.....	201-15th St., N.W.
	G. E. Walter.....	24-26 Sandwich St., East
	F. J. Creighton.....	Cor. Main and Portage Avenue
	N. A. B. Smith.....	502 Dundas Street

PRINTED IN CANADA 2-28

## CANADIAN NATIONAL RAILWAYS

### HOTELS OF DISTINCTION

Chateau Laurier.....	Ottawa
Prince Arthur Hotel.....	Port Arthur
The Fort Garry.....	Winnipeg
Prince Edward Hotel.....	Brandon
The Macdonald.....	Edmonton

### AND THE FOLLOWING OPEN DURING TOURIST SEASON

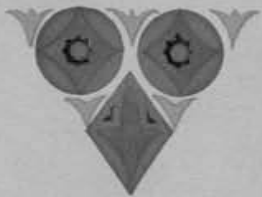
Jasper Park Lodge.....	Jasper, Alta.
Minaki Lodge.....	Minaki, Ont.
Nipigon Lodge.....	Orient Bay, Ont.
Grand Beach Hotel.....	Grand Beach, Man.
Pictou Lodge.....	Pictou, N.S.

A. S. McLean.....	Montreal, Que.
General Superintendent of Hotels.....	
Walter Pratt.....	Montreal, Que.
General Manager of Hotels.....	

# MINAKI



ONTARIO - CANADA



## CANADIAN NATIONAL

*LARGEST RAILWAY SYSTEM IN AMERICA*



## GOLF AT JASPER NATIONAL PARK

Jasper National Park Golf Course, designed to be the last word in lay-out, construction and up-keep, is in every respect a championship course, deliberately planned to be in harmony with the attractions of the natural beauties and grandeur of Rocky Mountain scenery—a Mecca for golfers from all parts of the world.

An annual event is Jasper Golf Week, which in 1928 will be from September 8th to September 15th, when the Totem Pole Trophy is again open for amateur competition.



# MINAKI LODGE

*Opens June 23 - Sept. 3, 1928*

RATES PER DAY

*American Plan*

	Single	Double
Rooms, without bath—Lodge.....	\$5.00	\$ 9.50
Rooms, without bath—10-room Cabin.....	5.50	10.50
Rooms, without bath—Main Building and 4-room Cabin.....	6.00	11.50
Rooms, with bath—Lodge.....	6.50	12.50
Rooms, with bath—4-room and 10-room Cabins.....	7.00	13.50
Rooms, with bath—Main Building.....	8.00	15.50

Children under seven years—half rate.

10 per cent discount on board and lodging for one month or longer.

Application for reservations should be made in advance through the nearest Canadian National Railways' representative or prior to June 17th to General Superintendent of Hotels, Canadian National Railways, Montreal, Que., after June 17th to the Manager, Minaki Lodge, Minaki, Ont.

HOTEL DEPARTMENT

MONTREAL, QUE.

A. S. McLEAN

*General Superintendent*

WALTER PRATT,

*General Manager*

# CANADIAN NATIONAL RAILWAYS

SLEEPING, DINING, PARLOR CAR AND  
HOTEL DEPARTMENT

WALTER PRATT,  
GENERAL MANAGER.

MONTREAL, QUE. Aug. 2nd, 1928.

H-1400.

Subject: Minaki Lodge, Minaki, Ont.

Mr. Louis W. Hill,  
Great Northern Railway,  
St. Paul, Minn.

Dear Mr. Hill:-

Your letter of July 15th addressed to our  
Minaki Lodge, Minaki, Ont., has been referred to me.

I am pleased to give you the following information regarding this summer resort, located on the Winnipeg River at the north end of the Lake of the Woods, about one hundred and fourteen miles east of Winnipeg. The Lodge was built under the direction of our architect, Mr. John Schofield; the approximate cost of all buildings, furnished and equipped, being \$800,000.00; total number of guests' rooms - 94; full house count capacity (two to a room) - 188; dining room capacity (regular service) - 175; total number staff - 130; length of season - June to September.

To give you some idea of what we have at Minaki, I am enclosing a copy of our Minaki booklet, also a blue print showing the layout of the main building; and if there is any further information you desire I shall be glad to hear from you again.

Yours very truly,



General Manager.

JC.

Encl.

15-1K

CANADIAN ROCKIES HOTEL COMPANY, LIMITED.

St. Paul, Minn., Aug. 6, 1928.

Mr. L. W. Hill,

President.

Dear Sir:

There is attached for your information and files one copy of the first annual report of the Canadian Rockies Hotel Company, Limited, for the year ended December 31, 1927, prepared by the Accounting Department.

I will be pleased to receive any criticisms or suggestions you may have to make.

Yours truly,

*Geo. H. Hurd*  
Comptroller.

AMC  
encl.

*Mr. Hill's office  
Called for August  
& returned again to this  
office Aug. 21, 1928.  
Hurd.*



August 10, 1928.

Mr. Walter Pratt, General Manager,  
Canadian National Railways,  
Hotel Department,  
Montreal, Quebec.

Dear Sir:-

Your letter of August 2 addressed to Mr. Hill,  
file H-1400, regarding Minaki Lodge, Minaki, Ontario, has  
been received during his absence in California.

Your letter and enclosures are being forwarded to  
Mr. Hill but I am acknowledging receipt and thanking you in  
his behalf as there may be some delay in hearing from Mr.  
Hill in as much as he is on a vacation trip with his family.

Very truly yours,

(SIGNED) H. W. CASK

Secretary to Chairman.

## CLASS OF SERVICE

This is a full-rate Telegram or Cablegram unless its character is indicated by a symbol in the check or in the address.

# WESTERN UNION

NEWCOMB CARLTON, PRESIDENT

J. C. WILLEVER, FIRST VICE PRESIDENT

## SYMBOLS

BLUE	Day Letter
NITE	Night Message
NL	Night Letter
ECO	Deferred
CLT	Cable Letter
WLT	Week End Letter

The filing time as shown in the date line on full-rate telegrams and day letters, and the time of receipt at destination as shown on all messages, is STANDARD TIME.

Received at CARMEL, CALIF.

10MY A 38 NL

CARDSTON ALTA SEPT 5 1928

L WHILL

PEBBLEBEACH CALIF

MR CROMARTY MAILING YOU TODAY PRINTS OF PROPOSED COTTAGES  
FOR WATERON ONE COPY TO STPAUL ONE TO PEBBLEBEACH  
AS PER YOUR REQUEST TO ME AM PREPARED TO START CONSTRUCTION  
ANY TIME WE RECEIVE INSTRUCTIONS TO DO SO

OLAND & SCOTT

750A SEPT 6

Telephoned to 234  
Time Delivered  
By  
Attempts to deliver  
To be



CANADIAN NATIONAL PARKS BRANCH  
WATERTON LAKES PARK

WATERTON PARK, ALBERTA, September 5th. 1928.

Dear Mr. Hill,

In accordance with your request that we should prepare the sketch plans for you, I am now enclosing herewith a blue print shewing suggested types of the bungalows which you contemplated building in connection with the Prince of Wales Hotel, at Waterton Lakes Park.

These are intended to be tentative sketches only and are submitted for your approval, personally however I think they are very attractive, and as a matter of fact the blueprint contains sufficient information to enable Oland to proceed with construction work if you should desire him to do so. I would be very glad to make any additional drawings he might require, and if you will inform me as to how many cottages you wish to erect this year I would also make a suitable lay-out plan.

With kindest regards to Miss Hill, the boys and yourself.

I am,

Yours sincerely,

*W.D. Crowder*

P.S. I am sending a copy of this letter and a blueprint to you at your office in St. Paul also.

*W.D.*

Louis W. Hill Esq.  
Pebble Beach. Cal.

15-10

LAW OFFICES  
**FELTHAN WATSON**  
1100 CENTRAL NATIONAL BANK BUILDING  
SAINT LOUIS

September 6th, 1928.

Mr. Louis Hill, Sr., Pres.,  
Great Northern Railway Company,  
Saint Paul, Minnesota.

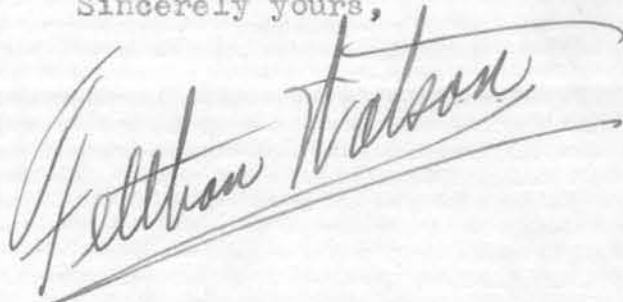
Dear Mr. Hill:-

I returned home a few days ago,  
after being in attendance at the meeting of the  
American Bar Association held in Seattle.

Permit me to assure you that my  
Father and I were delighted to form your acquaintance  
at the Prince of Wales Hotel at Cardston, Alberta,  
and also wish to assure you that we enjoyed our stay  
at both the Glacier Park and the Prince of Wales  
in our trip to the Glacier National Park.

With kind personal regards and with  
very best wishes, I am

Sincerely yours,

A handwritten signature in cursive script, reading "Feltham Watson". The signature is written in dark ink and is positioned below the typed name "Feltham Watson".

FW:IC



C O P Y

St. Paul, October 12, 1928.

MR. RALPH BUDD:

Captain J. W. Swanson at Glacier Park has offered us four hundred dollars for the old boiler and engine that drove the sawmill at Many Glacier Hotel, also for the sawmill machinery on hand.

This machinery has not been used since 1917-1918. It was carried on the books on November 25 at a value of six hundred dollars.

I think we could probably get Swanson to pay five hundred dollars for it, and I wish you would ask Mr. Hill if he thinks we will have any use for it in the future, or if we could dispose of it on this basis.

W. P. Kenney

St. Paul, Minnesota, October 13, 1928.

Mr. L. W. Hill:

Will you please note the attached letter from Mr. Kenney, about the old boiler, engine, and sawmill machinery at Many Glacier Hotel, and advise me if you think we should sell the equipment to Captain Swanson for \$400 or \$500.

Ralph Budd. ✓

Encl.

m



# MINNESOTA HISTORICAL SOCIETY

Copyright in this digital version belongs to the Minnesota Historical Society and its content may not be copied without the copyright holder's express written permission. Users may print, download, link to, or email content, however, for individual use.

To request permission for commercial or educational use, please contact the Minnesota Historical Society.



[www.mnhs.org](http://www.mnhs.org)