

SECTION THRU TAP ROOM

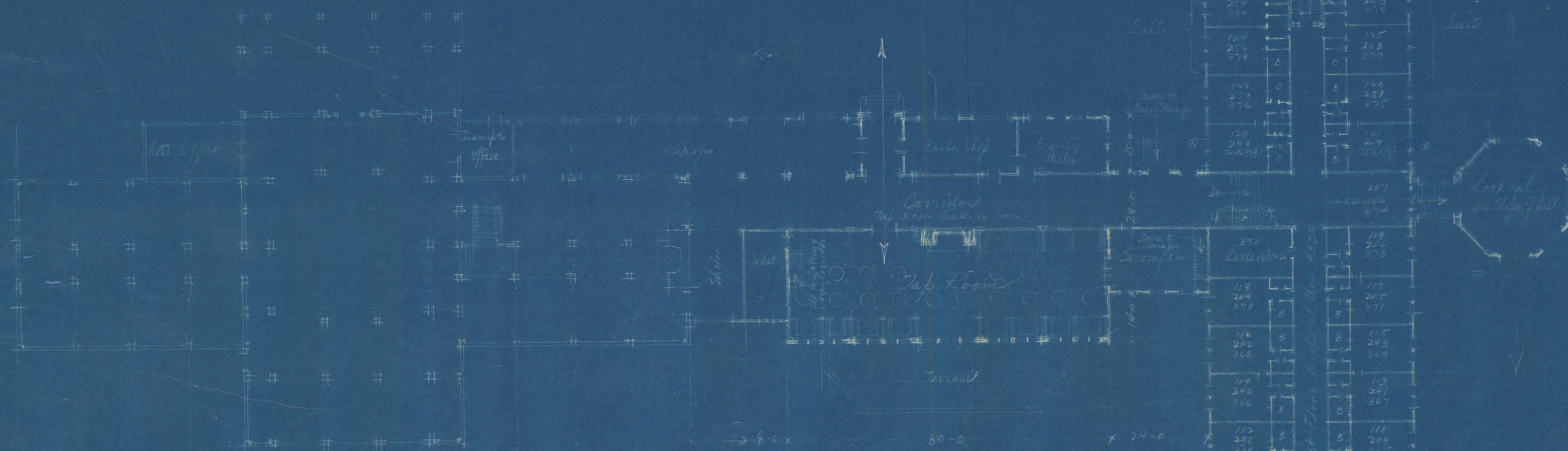
Card Room in Building

80 Rooms on 1st Floor

25 Rooms on 2nd & 3rd Floors with 2 private baths

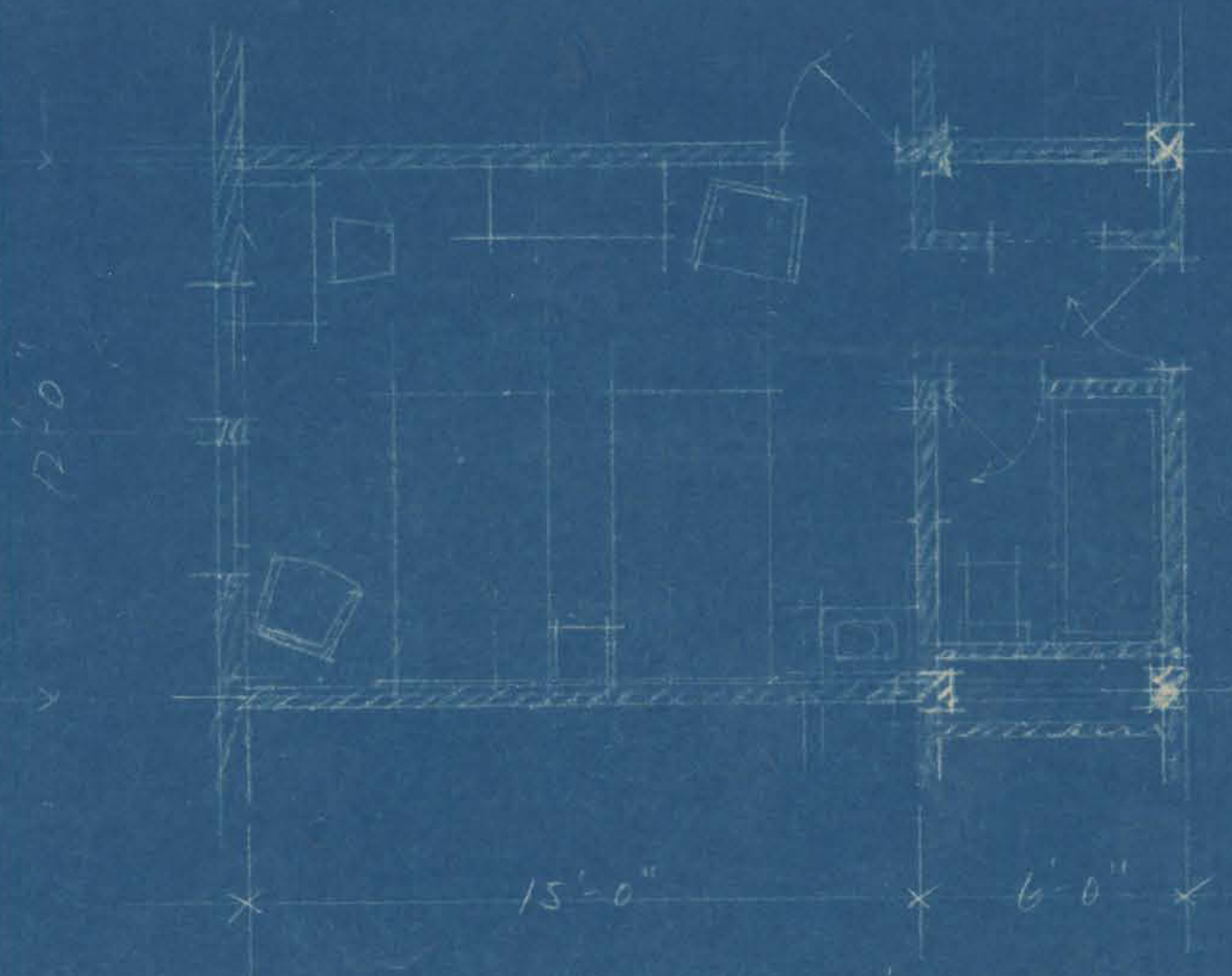
25 Rooms on 3rd Floor without private baths

Looking West



New Construction Shows in P.D.

TYPICAL BEDROOM at 1/4" = 1'-0"



Area

$$6 \times 51 = 306$$

$$6 \times 57 = 342$$

$$28 \times 24 = 672$$

$$51 \times 181 = 9231$$

$$\text{Total} = 10551$$

SCHEME B

PRELIMINARY STUDY

ANNEX TO PRINCE OF WALES HOTEL  
WATERTON LAKES PARK, ALBERTA, CAN.  
FOR GREAT NORTHERN R.R.

TOLTZ, KING & DAY INC. ENGINEERS & ARCHTS.  
ST. PAUL, MINN.

DRAWING 5 CON. 1479 DEC. 7/12/27

Scale 1 inch = 16 feet





# Minnesota Historical Society

Copyright in this digital version belongs to the Minnesota Historical Society and its content may not be copied without the copyright holder's express written permission. Users may print, download, link to, or email content, however, for individual use.

To request permission for commercial or educational use, please contact the Minnesota Historical Society.



[www.mnhs.org](http://www.mnhs.org)