



F. R. Meisch Papers.

Copyright Notice:

This material may be protected by copyright law (U.S. Code, Title 17). Researchers are liable for any infringement. For more information, visit www.mnhs.org/copyright.



THE HIDDEN SHEARS

56TH AND XERXES
MINNEAPOLIS, MN 55410

926-6787

Time Mark™



1984 POCKET PLANNER

JANUARY	FEBRUARY	MARCH
S M T W T F S 1 2 3 4 5 6 7 8 9 10 11 12 13 14 15 16 17 18 19 20 21 22 23 24 25 26 27 28 29 30 31	S M T W T F S 1 2 3 4 5 6 7 8 9 10 11 12 13 14 15 16 17 18 19 20 21 22 23 24 25 26 27 28 29	S M T W T F S 1 2 3 4 5 6 7 8 9 10 11 12 13 14 15 16 17 18 19 20 21 22 23 24 25 26 27 28 29 30 31
APRIL	MAY	JUNE
S M T W T F S 1 2 3 4 5 6 7 8 9 10 11 12 13 14 15 16 17 18 19 20 21 22 23 24 25 26 27 28 29 30	S M T W T F S 1 2 3 4 5 6 7 8 9 10 11 12 13 14 15 16 17 18 19 20 21 22 23 24 25 26 27 28 29 30 31	S M T W T F S 1 2 3 4 5 6 7 8 9 10 11 12 13 14 15 16 17 18 19 20 21 22 23 24 25 26 27 28 29 30
JULY	AUGUST	SEPTEMBER
S M T W T F S 1 2 3 4 5 6 7 8 9 10 11 12 13 14 15 16 17 18 19 20 21 22 23 24 25 26 27 28 29 30 31	S M T W T F S 1 2 3 4 5 6 7 8 9 10 11 12 13 14 15 16 17 18 19 20 21 22 23 24 25 26 27 28 29 30 31	S M T W T F S 1 2 3 4 5 6 7 8 9 10 11 12 13 14 15 16 17 18 19 20 21 22 23 24 25 26 27 28 29
OCTOBER	NOVEMBER	DECEMBER
S M T W T F S 1 2 3 4 5 6 7 8 9 10 11 12 13 14 15 16 17 18 19 20 21 22 23 24 25 26 27 28 29 30 31	S M T W T F S 1 2 3 4 5 6 7 8 9 10 11 12 13 14 15 16 17 18 19 20 21 22 23 24 25 26 27 28 29 30	S M T W T F S 1 2 3 4 5 6 7 8 9 10 11 12 13 14 15 16 17 18 19 20 21 22 23 24 25 26 27 28 29

DEC

JAN

FEB

MAR

APR

MAY

JUN

JUL

AUG

SEP

OCT

NOV

DEC

JAN

Name _____

Address _____

Phone _____ Soc. Sec. No. _____

Driver's Lic. No. _____ Car Lic. _____

Car Insurance Policy No. _____

In Case of Illness Notify _____

DECEMBER

1983

CLIP FOR
INDEX

MONDAY

TUESDAY

WEDNESDAY

THURSDAY

FRIDAY

SAT.-SUN.

1

2

3

4

Hanukkah

5

6

7

8

9

10

11

Pearl Harbor Day

12

13

14

15

16

17

18

19

20

21

22

23

24

25

Winter Begins

Christmas

26

27

28

29

30

31

memos:

JANUARY 40 hours

1984

CLIP FOR
INDEX

MONDAY	TUESDAY	WEDNESDAY	THURSDAY	FRIDAY	SAT.-SUN.
					1 New Year's Day
2	3	4	5 WATER COCK SELECTING 2 hours	6 UNFIRMING PURCHASING PARTIAL BID ETC MATTING Epiphany	7 6 1/2 hours 8 WRAPPING (11) 2 1/2 hours
9 TO SUPPORT SHIPMENT TO WELLS (12) 1 hour	10 FRAMING HANGING LOG IN OYSTERS HALL (17) 5 hours	11	12 x	13	14 15 Martin Luther King, Jr., 1929
16	17	18	19	20	21 FINANCE REVIEW (18) 1 hour 22
23	24	25	26 SLIDES 2 hours (20)	27 CLIPPINGS 4 hours (24)	28 CLIPPINGS 4 hours (28) 29 CLIPPINGS 6 hours (34)
30 REVIEW 2 SKETCH TRIP 4 hours (40)	31	memos:			

FEBRUARY 77 HOURS

1984

CLIP FOR
INDEX

MONDAY	TUESDAY	WEDNESDAY	THURSDAY	FRIDAY	SAT.-SUN.
		1 CORRESPONDENCE ② HOURS 40 + 2	2 CORRESPONDENCE SLIDES ④ 40 + 7 Ground Hog Day	3 WRAPPING ① 40 + 8	4 SHIPPING ① 40 + 9
6 MEETING ① 11:00 AM 40 + 70	7 COR	8 Boy Scouts Founded, 1910	9	10	5 11 12 Abraham Lincoln, 1809
13	14 St. Valentine's Day	15 CORRESPONDENCE ① HOURS 40 + 10	16	17 PAINTING ③ HOURS 40 + 13	18 19
20 CALCULATIONS PAINTING 10 H 40 + 24 Washington's Birthday Observed	21 PHOTOGRAPHY & STRETCHES 3 H PAINTING 3 H 40 + 30	22 PAINT 1/2 STRETCHES 1/2 DRAWING 3 40 + 34 George Washington, 1732	23 MARCH PAINT 8 H 40 + 42	24 PAINTING 6 H 40 + 48	25 PAINT 9 1/2 H 40 + 57 1/2 26 PAINT 9 1/2 H 40 + 67
27 PAINT 3 HRS PHOTOGRAPHY 1 Hour 40 + 71	28 READING 2 H 40 + 73	29 STUDY DRAW & PREP 4 H 40 + 77	CHURCH AT MITLA 2000 44 hours. 33 MINN VALLEY TRAIL 17 HOURS 117		
memos:					

MARCH 181 hours

1984

4 1/2
2 1/2CLIP FOR
INDEX

MONDAY	TUESDAY	WEDNESDAY	THURSDAY	FRIDAY	SAT.-SUN.
POPOCATEPTL 17887 FT 38 1/2 hrs COYOTUPEC 19 hours HERB HUNTER 30 1/2 PILINGS 11 hrs PEAR & ENGLA 19 hours 1000-			1 PAINT 11 HRS 117 + 11	2 PAINT PHOTOS 2H DRAWING 3 1/2 H MASKING 2H PAINT 117 + 7 1/2	3 PAINT 8 1/2 H 117 + 16 4 PAINT 7 H 117 + 23
5 PAINTING 9 H 117 + 32	6 PHOTO 1 H 1/2 SLIDES 1 H 1/2 DRAWING 1 H 1/2 STUDY 1 H 1/2 PAINT 2 1/2 H 117 + 38 1/2	7 PAINT 9 1/2 H 117 + 48 Ash Wednesday	8 PAINT 4 H 117 + 52	9 PHOTO & CLEANUP 1 H 117 + 53	10 DRAW 2 H 117 + 52 PAINT 1 H 117 + 52
12 PAINT 4 H 117 + 66 Girl Scouts Founded, 1912	13 PAINT 4 H 117 + 70	14 PAINT 2 H 117 + 72	15 PAINT 1 1/2 H 117 + 73 1/2	16 FRAME 1/2 H PAINT 5 1/2 H 117 + 79 1/2	11 PAINT 6 H 117 + 62 17 PAINT 4 1/2 H 117 + 80 PHOTO 1/2 H SLIDES 1 1/2 H St. Patrick's Day
19 PHOTO 1 H TRAVEL 1 H CORRESPONDENCE SLIDES 4 H 117 + 102	20 3 H CORRESPONDENCE & PURCHASING DRAW 2 H 117 + 107 Spring Begins	21 RESEARCH 1 H 1/2 TRAVEL 1 H 1/2 117 + 109	22 SLIDES & CORRESPONDENCE 2 H DRAWING 3 H 117 + 114	23 PAINT 13 H 117 + 127	18 DRAW PAINT 10 H 117 + 96 Purim 24 PAINT 9 H 117 + 136 PAINT 2 PHOTO 1 25 DRAW 1 PAINT 7 H 117 + 138
26 PAINT 9 H 117 + 147	27 PAINT 1 1/2 H PHOTO 1/2 H SLIDE STUDY 1 1/2 H DRAWING 1 1/2 H 117 + 152	28 PAINT 6 1/2 H 117 + 158 1/2	29 PIC CHANGES, REMARKS, WHITE COLOR SELECTION ETC. 4 1/2 H 117 + 163	30 MATS PLASTIC & UNFRAMING 9 1/2 H 117 + 172 1/2	31 11 1/2 H 117 + 181

memos:

2200

117

181

298

APRIL 156 HOURS

1984

 1250
 1250
 CLIP FOR INDEX

MONDAY	TUESDAY	WEDNESDAY	THURSDAY	FRIDAY	SAT. - SUN.
SAN JOAN GATE 23 1/2 1150 THE CLAY CART 25 1/2 1300-1500 FOUR BOATS 18 1/2 900 QUETZALCOATL 25 1/4 1500 CLOUDY DAY 24 1/4 1200			WEST WIND 11 1/2 800 16 3/4 228 FLOWER SERPENT TERRESTRIAL WATERS	8:00 298 + 11 1/2 800 9:30-11:30-12:30-1:00 3:00-4:30-5:15-10:30 LARGE & FINE 3 1/4 12:00-5 1/2 1/4 298 All Spots Day 3 1/2	
2 TRAIL & 1/2 H SHIP REVIEW 9 1/4 H PAINT 3 H 298 + 12	3 PAINT 3 H 298 + 15	4 PAINT H 298 + 15	5 11 1/4 9 1/4 PAINT 8 1/2 H 24 298 + 23 1/2	6 PAINT 1/2 STUDIO 1/2 SLIDES 2 1/2 DRAW 1 1/2 298 + 29	7 PAINT 7 H (14) 298 + 36 8 11 1/2-130 2:00-6:00 PAINT 13 1/4 298 + 49
9 PAINT 4 H * PHOTO 1 H REVIEW 2 1/2 H DRAW 12 H 298 + 61	10 PAINT 9 1/2 * 298 + 70 1/2	11 PHOTO 1/2 H TRAVEL 1 H 298 + 72	12 TRAILING MAT & FRAME 8 H 298 + 80	13 DRAWING PROP SLIDE STUDY 1 H 298 + 81	14 (15) 15 DRAW 1 H PAINT 10 H 298 Palm Sunday + 92
16 PAINT 10 H 298 + 102	17 PAINT 4 H CLEAN UP 1 H 298 + 107 Passover	18 DRAW 2 1/4 PAINT 9 H 298 + 118	19 WRAP & SHIP 4 H PAINT 2 1/2 H 298 + 124 1/2	20 PAINT 2 1/2 H 298 + 127 Good Friday	21 (16) 298 + 127 22 PAINT 4 H 298 + Easter 131
23 PAINT 5 H PHOTO 1/2 SLIDE REVIEW 1 1/2 H DRAWING 1 H 298 + 138	24 298 + 138	25 STUDY 1/2 H 298 + 138 1/2	26 STUDY & 12 H 1 1/2 H PAINT 10 1/4 H 298 + 150	27 298 + 150	28 CORPS 2 H PAINT 1 H REVIEWING 3 H 298 + 156 29 298 + 156
30 298 + 156	memos: 454		APRIL 21 FOR WC USA MAY 2 FOR BURIED SHOW		

MAY 92 HOURS

1984

CLIP FOR
INDEX

MONDAY	TUESDAY	WEDNESDAY	THURSDAY	FRIDAY	SAT.-SUN.
SHOW 454	1 OFFICE Low Day Loyalty Day	2 OFFICE $\frac{22}{50}$ 1156	3 SLIDES & DRAW 3H MEETING 3½ H 454 + 6½	4 OFFICE	PAINT 1 H (18) 5 WCTUBE INVENTORY 1 H 454 + 8½ 6 PAINT ½ H 454 + 21
7 STUDY ½ PAINT 3 PHOTO ½ STUDIO 1½ 454 + 26	8 STUDY 2H 454 + 28	9	10 ALTITUDE 2½ DRAWING OPENING TOWNS MEETING 4½ 454 + 35	11 STUDY STRETCHES 2H 454 + 37	12 STRETCH (19) ½ STUDY & 3½ DRAW 1 154 + 42 13 PAINT 5H 454 + 72 Mother's Day
14 STUDIO CLEANUP 1H PAINT 2½ H MATS ½ H 454 + 46	15 MATS 2H PAINTING 2½ H 454 + 52½	16 PAINT 2½ H * 454 + 55	17 DRAW 2½ H 454 + 57½	18 PICHAOL 2H PAINT 1H FRAME 1H SLIDES ½ H 454 + 62	19 PAINT PHOTO ½ H (20) 454 + 62½ 20 PAINT 5½ 454 + 68
21 PAINT 5 454 + 73 Victoria Day (Canada)	22 PAINT 3½ H 454 + 76½	23 PAINT 8H PHOTO ½ H STUDIO CLEANUP 1H 454 + 86	24 MANKATO 454 + 86	25 454 + 86	26 (21) 454 + 86 27 454 + 86
28 454 + 86 Memorial Day	29 SLIDE 4 H REVIEW 454 + 90	30 TYPING 1H 454 + 91	31 SLIDE REVIEW 1H 454 + 92	OPEN DOORS 1200- FOGGY RIVER FISHING 700- JAPANESE GARDEN 1300-	

memos:

JURIED SHOW ENTRIES MAY 10 TO 12

 $\frac{2½}{5½}$
 $\frac{16}{12}$
 $\frac{1}{2}$
 25 x 5120

JUNE 45 HOURS

1984

CLIP FOR
INDEX

MONDAY	TUESDAY	WEDNESDAY	THURSDAY	FRIDAY	SAT. - SUN.
				1 SLIDE REVIEW 2H 546+2	2 ART FAIR 1H 546+3 3
	DR		DR	8 WORKSHOP 6H 546+16	9 WORKSHOP 9H 546+25 10 FILES 1H 546+Pentecost 26
4 MATING INK DRAWINGS 4H 546+7	5 2H 546+9 OPENING ACM	6 CUTTING PACKS 1H 546+10	7	15	17 Father's Day
11 FILES PROGRAM 2H 546+28	12 3H TELE SOC PROGRAM 546+31	13 1H ART AWAY 546+32	14 Flag Day	22 STUDIO CLEANUP 2H 546+37	23 546+37 24
18	19	20 SEMINARS 3H 546+35	21 COLLECTED PONDENCE POSTAGE 1/2H 546+35 1/2 Summer Begins	29 SKETCH 2H 546+42 1/2	30 SKETCH 2 1/2 546+45 ↓ 601
25	26 PACK 1 HOUR 546+38	27 SKETCH 2H 546+40	28		
memos:				WATER COLOR USA PREVIEW	

WATER COLOR USA
OPEN JULY 1
THRU AUG. 12

JULY 12 HOURS

1984

CLIP FOR
INDEX

MONDAY	TUESDAY	WEDNESDAY	THURSDAY	FRIDAY	SAT.-SUN.
					1 ONPAC LC LH Canada Day (Canada) 601+1
2 W/C REVIEW 1H 601+2	3 SLIDE REVIEW 1H 601+3	4 SLIDE REVIEW 2H 601+5 Independence Day	5	6	7
9	10	11	12	13	8
					15 SKETCH TRIP 3H 601+8
16	17	18	19	20	21
					22
23	24	25	26 WATER COLOR USA SHOW 2 HOURS 601+10	27	28
					29 ENTRIES 1 1/2 HOURS 601+11 1/2
30 ENTRIES 1 1/2 HOURS 601+12	31	memos:			

AUGUST 9½ HOURS

MIDWEST WC SEC. PREVIEW

1984

OPEN AUG 5 THRU

SEPT 30

CLIP FOR
INDEX

MONDAY	TUESDAY	WEDNESDAY	THURSDAY	FRIDAY	SAT.-SUN.
		1	2	3 PICTURE HAULING 1H 613+1	4 5
6	7	8 613+	9	10 PICTURE HAULING 1H 613+2	11 12
13	14	15 WATER COLON SHOW 3H 613+5	16 PHOTOGRAPHY 2H 613+7	17	18 19
20	21	22 STATE FAIR SHOW 2½H 613+9½	23	24	25 26
27	28	29	30	31	

memos:

622½

SEPTEMBER 42 1/2 HOURS

1984

CLIP FOR INDEX

MONDAY	TUESDAY	WEDNESDAY	THURSDAY	FRIDAY	SAT.-SUN.
				6 1/2 2 1/2 9	1
					2
3 622 1/2 Labor Day	4 W.C. PICK-UP 1 1/4 MATH 3 1/4 622 1/2 + 4	5 W.C. HAUL 1 1/4 W.C. MATTS 2 1/4 MEETING 2 1/4 622 1/2 + 9	6	7 SICK ENTRY 1 H 622 1/2 + 10	8
					9
10	11 FRAMING & SELECTIONS 3 H 622 1/2 + 13	12 CORRESPONDENCE 1 1/2 H WIRE PLASERS 1 H 622 1/2 + 1 1/2	13 NEW WC MEETING 2 1/2 H 622 1/2 + 18	14	15
					16
17	18 2 1/2 H SICK 8 1/4 622 1/2 + 20 1/2	19 CH CCWB	20 PIC. CORDS 1 H 622 1/2 + 21 1/2	21 SOLIDS 1 H 622 1/2 + 22 1/2	22 DENIO 6 H 622 + 28 1/2 Fall Begins
					23 SKETCH TRIP 8 H 622 + 36 1/2 H
24	25	26 PICTURE HAUL 1 1/2 H 622 + 38	27 PICTURE HAUL 1 1/2 H 622 + 38 1/2 Jewish New Year	28 PICTURE HAUL 1 H 622 + 39 1/2 Jewish New Year	29
					30 SKETCHING 3 H 622 + 42 1/2 664 1/2

memos:

OCTOBER

12 Hours

1984

CLIP FOR
INDEX

MONDAY	TUESDAY	WEDNESDAY	THURSDAY	FRIDAY	SAT.-SUN.
1 EXHIBITION 1H 664 1/2 + 1	2	3 EXHIBITION 2H 664 1/2 + 3	4 SLIDES 1H 664 1/2 + 4	5 SLIDES 1H 664 1/2 + 5	6 Yom Kippur
8 Columbus Day Thanksgiving (Canada)	9	10	11	12	7 13 14
15	16	17	18	19 SKETCH TRIP 4H 664 1/2 + 9	20 21
22	23	24 SLIDE REVIEW 1H 664 1/2 + 10 United Nations Day	25	26 WC PICKUP 1H 664 1/2 + 11	27 28
29	30	31 WC PICKUP 1H 664 1/2 + 12 Halloween			

memos:

676 1/2

NOVEMBER 2 1/2 HOURS 1984

CLIP FOR
INDEX

MONDAY	TUESDAY	WEDNESDAY	THURSDAY	FRIDAY	SAT.-SUN.
			1 EXHIBITION VISIT 1/2 H	2	3
			67 1/2 + 1/2		4 PAINTING 8 H 67 1/2 + 8 1/2
5 MAT & PHOTO 3 H WC REVIEW 1 H 67 1/2 + 12 1/2	6 General Election Day	7 MEETING 2 H 67 1/2 + 14 1/2	8	9	10 WC REVIEW 2 H 67 1/2 + 14 1/2
					11 Veterans' Day
12	13	14	15 WC REVIEW 2 H 67 1/2 + 18 1/2	16	17
					18 ART EXHIBIT 1 H 67 1/2 + 19 1/2
19	20	21	22 Thanksgiving	23	24
					25
26	27	28 MEETING 2 H 67 1/2 + 21 1/2	29	30	

memos:

698

DECEMBER

60

HOURS

1984

CLIP FOR
INDEX

MONDAY	TUESDAY	WEDNESDAY	THURSDAY	FRIDAY	SAT.-SUN.
					1 CORRESPONDENCE $\frac{1}{2}$ H 698 + $\frac{1}{2}$
					2 PHOTO 1H 698 + $\frac{1}{2}$
3	4 PHOTO 1H MEETING 2H 698 + $4\frac{1}{2}$	5 PROGRAM SLIDES 1H 698 + 1H	6 PROGRAM SLIDES 6H 698 + 2H	7 PHOTOS 1H 698 + 22 Pearl Harbor Day	8
10	11 PROGRAM 2H REVIEW WC REVIEW 1H 698 + 25	12 SLIDE REVIEW $\frac{1}{2}$ H 698 + $25\frac{1}{2}$	13	14	9
17	18	19 Hanukkah	20	21 SLIDES $\frac{1}{2}$ H DRAWING 2H 698 + 28 Winter Begins	22 MUSIC & PAINT 5H 698 + 33
24 PAINT 3H 698 + 43	25 Christmas	26 PAINT 2H 698 + 45	27 PAINT 2H 698 + 47	28 PAINT 5H 698 + 52	23 PAINT 7H 698 + 40
31 PAINT $\frac{1}{2}$ H 698 + 60	memos: 758 Hrs				29 PAINT 6H 698 + 58
					30 PAINT $\frac{1}{2}$ H 698 + $58\frac{1}{2}$

JANUARY

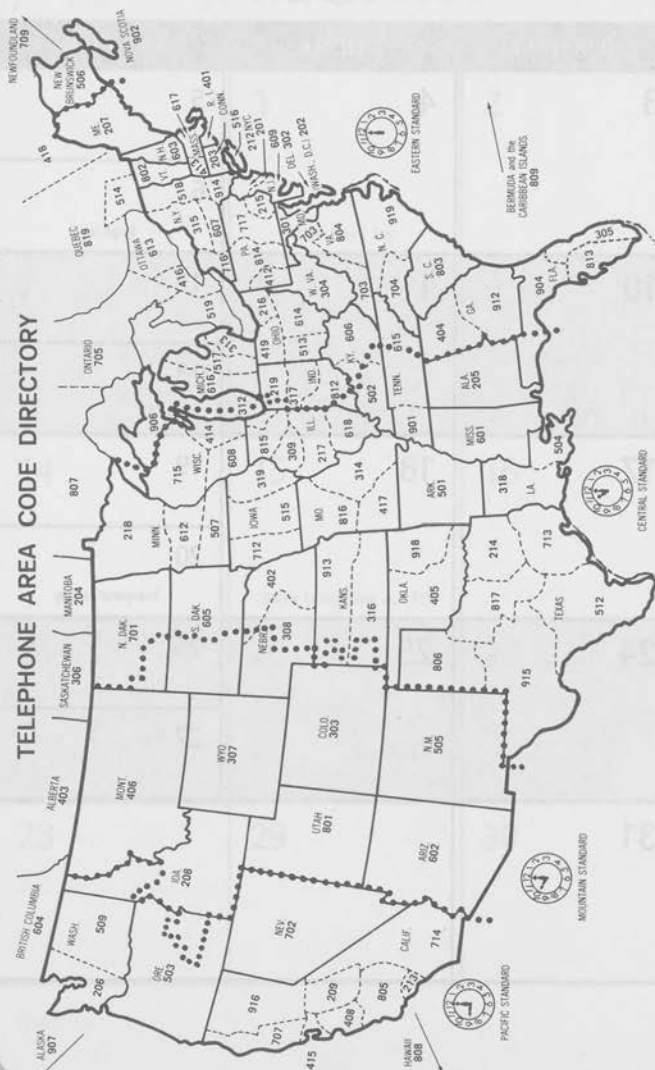
1985

CLIP FOR
INDEX

MONDAY	TUESDAY	WEDNESDAY	THURSDAY	FRIDAY	SAT.-SUN.
	1	2	3	4	5
	New Year's Day				6 Epiphany
7	8	9	10	11	12
					13
14	15 Martin Luther King, Jr., 1929	16	17	18	19
					20 Inauguration Day
21	22	23	24	25	26
					27
28	29	30	31		

memos:

TELEPHONE AREA CODE DIRECTORY



NUMBER

1	2	3	4	5	6	7	8	9	10	11	12	13	14	15	16	17	18	19	20	21	22	23	24	25	26	27	28	29	30	31	32	33	34	35	36	37	38	39	40	41	42	43	44	45	46	47	48	49	50	51	52	53	54	55	56	57	58	59	60	61	62	63	64	65	66	67	68	69	70	71	72	73	74	75	76	77	78	79	80	81	82	83	84	85	86	87	88	89	90	91	92	93	94	95	96	97	98	99	100
---	---	---	---	---	---	---	---	---	----	----	----	----	----	----	----	----	----	----	----	----	----	----	----	----	----	----	----	----	----	----	----	----	----	----	----	----	----	----	----	----	----	----	----	----	----	----	----	----	----	----	----	----	----	----	----	----	----	----	----	----	----	----	----	----	----	----	----	----	----	----	----	----	----	----	----	----	----	----	----	----	----	----	----	----	----	----	----	----	----	----	----	----	----	----	----	----	----	----	-----

1983

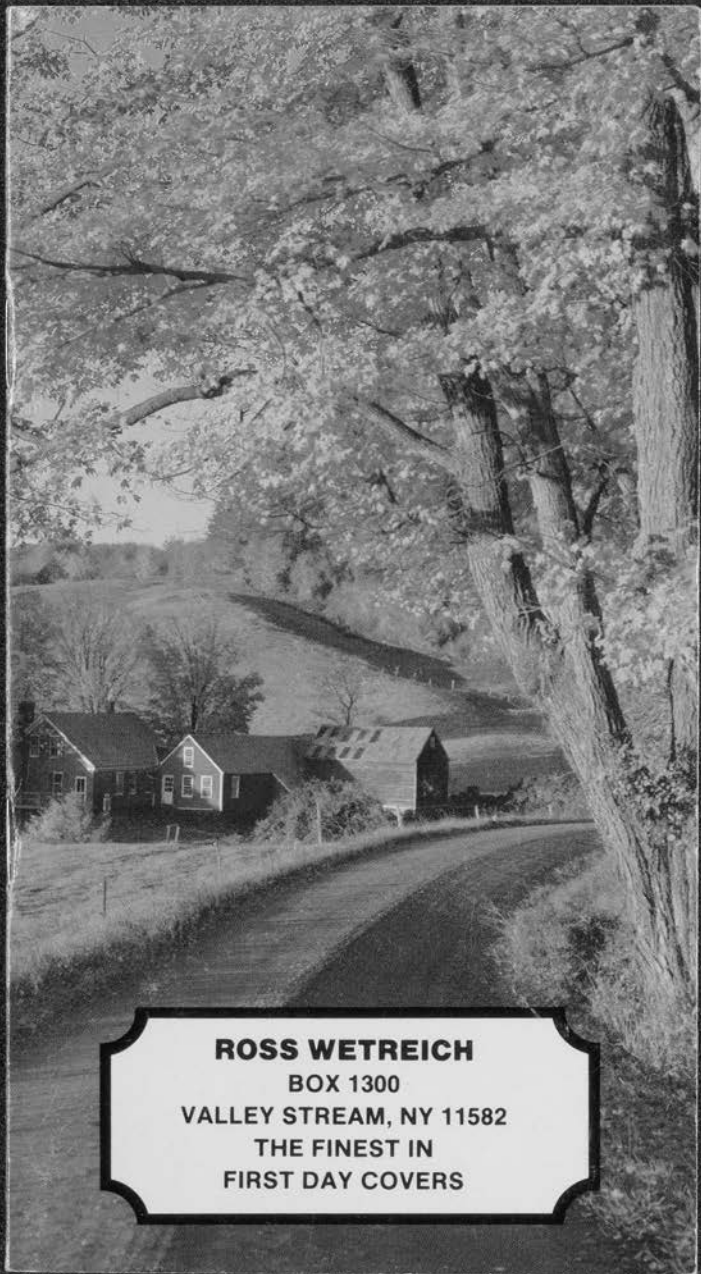
JANUARY S M T W T F S 1 2 3 4 5 6 7 8 9 10 11 12 13 14 15 16 17 18 19 20 21 22 23 24 25 26 27 28 29	FEBRUARY S M T W T F S 1 2 3 4 5 6 7 8 9 10 11 12 13 14 15 16 17 18 19 20 21 22 23 24 25 26 27 28	MARCH S M T W T F S 1 2 3 4 5 6 7 8 9 10 11 12 13 14 15 16 17 18 19 20 21 22 23 24 25 26 27 28 29 30 31
APRIL S M T W T F S 1 2 3 4 5 6 7 8 9 10 11 12 13 14 15 16 17 18 19 20 21 22 23 24 25 26 27 28 29 30	MAY S M T W T F S 1 2 3 4 5 6 7 8 9 10 11 12 13 14 15 16 17 18 19 20 21 22 23 24 25 26 27 28 29 30 31	JUNE S M T W T F S 1 2 3 4 5 6 7 8 9 10 11 12 13 14 15 16 17 18 19 20 21 22 23 24 25 26 27 28 29 30
JULY S M T W T F S 1 2 3 4 5 6 7 8 9 10 11 12 13 14 15 16 17 18 19 20 21 22 23 24 25 26 27 28 29 30	AUGUST S M T W T F S 1 2 3 4 5 6 7 8 9 10 11 12 13 14 15 16 17 18 19 20 21 22 23 24 25 26 27 28 29 30 31	SEPTEMBER S M T W T F S 1 2 3 4 5 6 7 8 9 10 11 12 13 14 15 16 17 18 19 20 21 22 23 24 25 26 27 28 29 30
OCTOBER S M T W T F S 1 2 3 4 5 6 7 8 9 10 11 12 13 14 15 16 17 18 19 20 21 22 23 24 25 26 27 28 29	NOVEMBER S M T W T F S 1 2 3 4 5 6 7 8 9 10 11 12 13 14 15 16 17 18 19 20 21 22 23 24 25 26 27 28 29 30	DECEMBER S M T W T F S 1 2 3 4 5 6 7 8 9 10 11 12 13 14 15 16 17 18 19 20 21 22 23 24 25 26 27 28 29 30 31

1985

JANUARY S M T W T F S 1 2 3 4 5 6 7 8 9 10 11 12 13 14 15 16 17 18 19 20 21 22 23 24 25 26 27 28 29 30 31	FEBRUARY S M T W T F S 1 2 3 4 5 6 7 8 9 10 11 12 13 14 15 16 17 18 19 20 21 22 23 24 25 26 27 28	MARCH S M T W T F S 1 2 3 4 5 6 7 8 9 10 11 12 13 14 15 16 17 18 19 20 21 22 23 24 25 26 27 28 29 30
APRIL S M T W T F S 1 2 3 4 5 6 7 8 9 10 11 12 13 14 15 16 17 18 19 20 21 22 23 24 25 26 27 28 29 30	MAY S M T W T F S 1 2 3 4 5 6 7 8 9 10 11 12 13 14 15 16 17 18 19 20 21 22 23 24 25 26 27 28 29 30 31	JUNE S M T W T F S 1 2 3 4 5 6 7 8 9 10 11 12 13 14 15 16 17 18 19 20 21 22 23 24 25 26 27 28 29
JULY S M T W T F S 1 2 3 4 5 6 7 8 9 10 11 12 13 14 15 16 17 18 19 20 21 22 23 24 25 26 27 28 29 30 31	AUGUST S M T W T F S 1 2 3 4 5 6 7 8 9 10 11 12 13 14 15 16 17 18 19 20 21 22 23 24 25 26 27 28 29 30 31	SEPTEMBER S M T W T F S 1 2 3 4 5 6 7 8 9 10 11 12 13 14 15 16 17 18 19 20 21 22 23 24 25 26 27 28 29 30
OCTOBER S M T W T F S 1 2 3 4 5 6 7 8 9 10 11 12 13 14 15 16 17 18 19 20 21 22 23 24 25 26 27 28 29 30 31	NOVEMBER S M T W T F S 1 2 3 4 5 6 7 8 9 10 11 12 13 14 15 16 17 18 19 20 21 22 23 24 25 26 27 28 29 30	DECEMBER S M T W T F S 1 2 3 4 5 6 7 8 9 10 11 12 13 14 15 16 17 18 19 20 21 22 23 24 25 26 27 28 29 30 31

people skills
product knowledge
communication

browser
decided
undecided



ROSS WETREICH

BOX 1300

VALLEY STREAM, NY 11582

**THE FINEST IN
FIRST DAY COVERS**

Sunshine Pocket Planner 1985

PERSONAL DATA

NAME _____

ADDRESS _____

CITY _____

PHONE _____

COMPANY _____

ADDRESS _____

CITY _____

PHONE _____

IN CASE OF ACCIDENT CALL _____

PHONE _____

CREDIT CARDS

Card Name

Number

_____	_____
_____	_____
_____	_____
_____	_____
_____	_____

HEALTH & ACCIDENT INFORMATION

Insurance Co.

Policy No.

_____	_____
_____	_____
_____	_____
_____	_____
_____	_____

Made in U S A

MINNEHABA FALLS 46H 2400 (2150)
 RIVERBANK 33
 SKYLINE 33
 SATURDAY 33
 SUNDAY 1650 MONDAY 1650 TUESDAY

128

Hours

JANUARY 1985

WEDNESDAY

THURSDAY

FRIDAY

ST ANTHONY MIA 45

(2250)

DECEMBER
 S M T W T F S

1
 2 3 4 5 6 7 8
 9 10 11 12 13 14 15
 16 17 18 19 20 21 22
 23 24 25 26 27 28 29
 30 31

New Year's Day

2

3

4

PAINT 3 1/2 H

3 1/2

PAINT 5 1/2 H
 5

7

8

9

10

11

CLEANUP 1/2 H
 STRETCHES 1/2 H
 SLIDES 1/2 H
 DRAWING 1 1/2 H
 PAINT 3 H
 18

43 H
 +9
 PHOTO 1 H
 6

MEETING
 2 H

12

10

PAINTING 9 H
 12

14

PAINT 9 1/2 H
 30 1/2

15

PAINT 2 1/2 H
 PHOTO 1 1/2 H

16

17

MEETING 3 1/2 H

18

SLIDES &
 DRAWING
 2 H

26
 PAINTING 8 H
 13

34

43 1/2

46 1/2
 Martin Luther
 King Day

50

52

19
 PAINT 8 H
 60

21

PAINT 5 1/2 H

22

PAINT 5 1/4 H

23

PAINT 1 H

24

PAINT 1 1/2 H
 PHOTO 1/2

25

DRAWING 1 1/2 H
 RESEARCH 5 H

PAINT 9 H
 20

74 1/2

80

81

83

89 1/2

RESEARCH 4 H
 DRAWING 1 H
 PAINT 4 1/2 H
 99

28

PAINT 7 1/2 H

29

PAINT 6 H

30

PAINT 5 H

31

PAINT 8 1/4

PAINT 3 1/2 H
 102 1/2

110

116

119

128

FEBRUARY
 S M T W T F S
 1 2
 3 4 5 6 7 8 9
 10 11 12 13 14 15 16
 17 18 19 20 21 22 23
 24 25 26 27 28

PT SNELLING 20 H 1000
 PLAYGROUND 24 H 1100
 SATURDAY
 SUNDAY

MONDAY

TUESDAY

WEDNESDAY

THURSDAY

FRIDAY

77¹⁴ FEBRUARY 1985

JANUARY
 S M T W T F S
 1 2 3 4 5
 6 7 8 9 10 11 12
 13 14 15 16 17 18 19
 20 21 22 23 24 25 26
 27 28 29 30 31

MARCH
 S M T W T F S
 1 2
 3 4 5 6 7 8 9
 10 11 12 13 14 15 16
 17 18 19 20 21 22 23
 24 25 26 27 28 29 30
 31

66
 22 1/2
 1
 30

PHOTO 1/2 H
 CLEAN UP 1/2 H
 MATS 2 H

128 + 2 1/2

2 MATTING 1 1/2

4

5

6

7

8

128 + 4

3

9

DRAWING 1 H
 11
 PAINTING 5 H

PHOTO 2 H
 12
 PAINTING 4 H

13
 MEETING 2 H
 PAINT 4 H

14 PAINT 5 H

15 PHOTO 1/2
 MAT 1
 TRAVEL 1

SLIDES 1 H
 10

128 + 5

128 + 10

128 + 14
 Lincoln's Birthday

128 + 20

128 + 25
 Valentine's Day

128 + 27 1/2

16

18

19

20

21

22 CLEAN 1/2 H
 DRAWING 1 H
 11:00 AM 1/2

STRETCHES 1 1/2 H
 17

128 + 29

Presidents' Day

Ash Wednesday

PAINT 8 1/2 H
 23

PAINT 1 1/2
 25
 PHOTO 1/2
 CLEAN 1/2

PAINT 7 H
 26

27 PAINT 11 1/2

28 PAINT 4 H

128 + 37 1/2

DRAW 2
 PAINT 4 1/2
 128 + 54 1/2

128 + 61 1/2

128 + 73

128 + 77

205

PAINT 9 H
 24
 128 + 45 1/2

BURNING MILL 30 1/2 1525 1500
 ICE FISHERMAN 33 1/2 1675 1700
 SATURDAY SECTION 23 1/2 1200
 SUNDAY MONDAY TUESDAY
 SIDE TRACKED 25 1/2 1300

TH PHILADELPHIA 124 600
 CHANGING ROOM 334 FEBRUARY 1650

S M T W T F S
 1 2
 3 4 5 6 7 8 9
 10 11 12 13 14 15 16
 17 18 19 20 21 22 23
 24 25 26 27 28

APRIL
 S M T W T F S
 1 2 3 4 5 6
 7 8 9 10 11 12 13
 14 15 16 17 18 19 20
 21 22 23 24 25 26 27
 28 29 30

2330 152 MARCH 1985
 SUPERLUP POINT G/L

WEDNESDAY THURSDAY FRIDAY

PAINT 1
 2 PHOTO 1/2
 DRAW 2 1/2
 205 + 10
 3 PAINT 10 1/4

205 + 20

PAINT 1
 9

PHOTO 1/2 1/4
 CLEAN UP 1/2 1/4
 SLIDE 3 1/2 1/4
 205 + 44 1/2

PAINT 9 1/2
 16

205 + 87 1/2

PAINT 7 1/2
 17

PHOTO 1/2
 205 + 95 1/2

St. Patrick's Day

STUDY & DRAW 3 1/4
 23

205 + 117

DRAW 3 1/4
 VA247 5 1/2

205 + 123

4 PAINT 7 1/4

DRAWING 1 1/2 1/4
 11

PAINT 6 1/2 1/4

205 + 52 1/2

18 STRUCTURES 1/2
 DRAW 3 1/4 1/4

PAINT 3 1/4 1/4

PHOTO 1 1/2 1/4

205 + 91 1/2

100 1/2

25 PAINT 8 1/2

125 1/4

205 + 131 1/2

5 PAINT 4 1/4

12

PAINT 4 1/2

205 + 57

19 PAINT 7

PHOTO 2 1/2

205 + 100

26 PAINT 7 1/2

133

205 + 139 1/2

6 PAINT 3 1/2
 PHOTO 1/2

MEETING 2 1/2

205 + 37 1/2

13

PAINT 7 1/2

205 + 64 1/2

20

HITWAT

SS + 7PE

27 PAINT 2 1/4
 PHOTO 1/2
 SLIDE REVIEW 1
 TRIP 1/2

205 + 143

7 PAINT 2 1/2

MEETING 2 1/2

205 + 42 1/2

14

PAINT 3 1/4

PHOTO 1/2 1/4

SLIDES 2 1/4

205 + 70

21

TRAVEL 1 1/4

& POST

205 + 111

28

205 + 143

1 PAINT 8

8

CLEAN UP

PAINT 1 1/4

205 + 43

SLIDE 1 1/2 1/4

15 DRAW 1 1/2 1/4

PAINT 6 1/4

205 + 78

22

DRAW 1 1/2 1/4

STUDY 1 1/2 1/4

205 + 114

29

DRAWING 2 1/4

205 + 145

TEMPLE OF THE INSCRIPTION 9502 1924

28 APRIL 1985

SATURDAY SUNDAY	MONDAY	TUESDAY	WEDNESDAY	THURSDAY	FRIDAY
30 PAINT 3H 205+148	1 PAINT 6 1/2	2 PAINT 8	3 PHOTO 1/2 CUNNINGHAM 1/2	4	5
31 PAINT 4H 205+152	357+6 1/2	357+14 1/2	PAINT 2 1/4 357+18		Good Friday
6 Passover Begins	8	9	10	11	12
7 Easter Sunday					
13	15	16 MWS ENTR 16-7 2H	17 ACOM ENTR 16-3 1H	18	19
14		357+20	357+21		
20	22	23 PAINT 1H	24	25	26
21		357+22			
27 MATS 2H 357+24	29	30			
FRAMING 284H 357+28				<p>MARCH</p> <p>S M T W T F S</p> <p>1 2</p> <p>3 4 5 6 7 8 9</p> <p>10 11 12 13 14 15 16</p> <p>17 18 19 20 21 22 23</p> <p>24 25 26 27 28 29 30</p> <p>31</p>	<p>MAY</p> <p>S M T W T F S</p> <p>1 2 3 4</p> <p>5 6 7 8 9 10 11</p> <p>12 13 14 15 16 17 18</p> <p>19 20 21 22 23 24 25</p> <p>26 27 28 29 30 31</p>

385

10 MAY 1985

SATURDAY
SUNDAY

MONDAY

TUESDAY

WEDNESDAY

THURSDAY

FRIDAY

19 1/2
20
9 25
50

APRIL

S	M	T	W	T	F	S
1	2	3	4	5	6	
7	8	9	10	11	12	13
14	15	16	17	18	19	20
21	22	23	24	25	26	27
28	29	30				

JUNE

S	M	T	W	T	F	S
						1
2	3	4	5	6	7	8
9	10	11	12	13	14	15
16	17	18	19	20	21	22
23	24	25	26	27	28	29
30						

385

4

6

7

8

9

WC
INVENTORY
2H

10

5

385+2

11

13

14

15

ART
SUPPLIES 2H

17

12

PICTURE
FRAMING 1H

Mother's Day

385+5

18

20

21

22

23

24

Armed Forces Day

BILKFIELD
FIAM 2H

PICTURE
MATTIN 2H

19

385+7

385+9

25

27

28

29

30
ART SUPPLIES
1H

31

26

Memorial Day
(Obsvd.)

385+10

PALENGUE 18 1/2 H 3850⁰⁰

72 JUNE 1985

SATURDAY
SUNDAY

MONDAY

TUESDAY

WEDNESDAY

THURSDAY

FRIDAY

1 395	3	4 EXHIBITION 2 H 395+2	5 PAINT 1 1/2 395+3 1/2	6 PAINT 4 395+7 1/2	7 PAINT 5 395+12 1/2
2					
PAINT 4 H 8 PHOTO 1/2 H 395+17	10	11	12	13 PHOTOGRAPHY 3 H	14 PHOTOGRAPHY 3 H
PHOTOGRAPHY 3 H PAINT 2 H 395+22			LEAVE	395+20	395+23 Flag Day
PHOTO 3 H PAINT 2 H 395+28	17 PHOTOGRAPHY 2 H PAINT 3 H 395+38	18 PHOTOGRAPHY 2 H PAINT 3 H 395+43	19 PHOTOGRAPHY 1 H PAINT 2 H 395+46	20 PHOTOGRAPHY 2 H PAINT 2 H 395+50	21 PAINT 5 H 395+55
PHOTO 3 H PAINT 2 H 395+33					
PHOTOGRAPHY 4 H 395+59	24 PAINT 4 H 395+62	25 PAINT 5 H 395+67	26 PAINT 5 H 395+72	27 MADE 15 WATERCOLOR SKETCHES AT ETC WORKSHOP RETURN	28
23					
29					
30	467			MAY S M T W T F S 1 2 3 4 5 6 7 8 9 10 11 12 13 14 15 16 17 18 19 20 21 22 23 24 25 26 27 28 29 30 31	JULY S M T W T F S 1 2 3 4 5 6 7 8 9 10 11 12 13 14 15 16 17 18 19 20 21 22 23 24 25 26 27 28 29 30 31

SATURDAY
SUNDAY

MONDAY

TUESDAY

WEDNESDAY

THURSDAY

FRIDAY

104 JULY 1985

467 CRAG GAUNDAWEN	1 CASTLE 15 1/2 19 1/2	2 800.00 1000.00	DRAW 1 H PAINT 2 H	4 PAINT 3 H	5 PAINT 4 1/2 H
PAINT 4 H 6 467+ 14 1/2 PAINT 2 H CLEAN UP 1 H MATS 6 H 467+ 23 1/2	TRAVEL 8 H 8 MATS 3 H 467+ 34 1/2	9	467+ 3 10 SLIDESS	467+ 6 Independence Day PAINT 4 H	467+ 10 1/2 12 PHOTO 1 1/2 H 467+ 39
13	15	16	17 FRAME 5 H 467+ 44	18 PAINT 2 H FRAME 3 H 467+ 49	19
14					
20	22 WOIK SHOP ENGLE I DILLMANS LODGE 7	23 7	24 7	25 7	26 7
TRAVEL 5 H 21 467+ 54	467+ 61	467+ 68	467+ 75	467+ 84 474	467+ 91
TRAVEL 3 H EXHIBIT 1 H 467+ 95 TRAVEL 4 H 28 467+ 99	29	30 STRETCHES 1 H 467+ 100	31 DRAW 1 H PAINT 3 H 467+ 104	JUNE S M T W T F S 1 2 3 4 5 6 7 8 9 10 11 12 13 14 15 16 17 18 19 20 21 22 23 24 25 26 27 28 29 30	AUGUST S M T W T F S 1 2 3 4 5 6 7 8 9 10 11 12 13 14 15 16 17 18 19 20 21 22 23 24 25 26 27 28 29 30 31 571

THURSDAY 157½ FRIDAY

		JULY		SEPTEMBER		13 JULY		2	
		S M T W T F S		S M T W T F S		1		THROUGH 1 H	
		1 2 3 4 5 6		1 2 3 4 5 6 7		PAINT 7 H		SCOTT FARM SUPPLIES	
		7 8 9 10 11 12 13		8 9 10 11 12 13 14				PAINT 1 H	
		14 15 16 17 18 19 20		15 16 17 18 19 20 21		571 + 7		571 + 9	
		21 22 23 24 25 26 27		22 23 24 25 26 27 28					
		28 29 30 31		29 30					
PAINT 3 H PHOTO 1/2 H		5 PAINT 1/2 H		DRAW 1 H 6 PAINT 1 H		7 PAINT 7 H		8 SHOW PAINTINGS 1 H SLIDE SELECTION 1 H PAINT 2 H	
571 + 12 1/2				PICTURE REVIEW 3 H		571 + 25		571 + 29	
4		571 + 13		571 + 18		571 + 29		571 + 29	
PAINT 6 H 10		12 DRAW 1 H PAINT 5 H		13 PAINT 1 H		14 PAINT 8 1/2		15 PAINT 2 1/2 H PHOTO 1/2 H CLEAN UP 1/2 H DRAW SLIDE REVIEW 1/2 H	
571 + 35						571 + 5 1/2		571 + 55 1/2	
PHOTO 1 H 11		571 + 42		571 + 43		PAINT 3 H 21		PAINT 3 H 22 PHOTO 1/2 CLEAN UP STRETCHES SLIDES } 3 1/2	
571 + 36		571 + 42		571 + 43		571 + 91		571 + 98	
PAINT-OUT 17 7 H		19 PHOTO 1/2 H CLEAN UP PAINT 1/2 H		20 PAINT 7 1/2 H EXHIBITION 1/2 H		PAINT 7 H 28 (17)		PAINT 8 H 29 (20) (5) →	
571 + 69 1/2		PAINT 7 H		571 + 88 8 1/2		571 + 135		571 + 143	
PAINT 6 1/2 H 18		571 + 79		PAINT 6 H 27				571 + 155	
571 + 69		571 + 79		571 + 88					
PAINT 11 H 24 571 + 110 1/2		26 PAINT DRAW 1 + 1 1/2		571 + 128					
PAINT 2 1/2 H 31 571 + 157 1/2		PAINT 3							
PAINT 5 1/2 25 PHOTO 1/2		571 + 122							
571 + 116 1/2									

LATE AFTERNOON REFLECTIONS

30 1/2 SEPTEMBER 1985

SATURDAY
SUNDAY

MONDAY

TUESDAY

WEDNESDAY

THURSDAY

FRIDAY

2 PAINT 4H	3 PICTURE
PHOTO 1H	HAULING
CLEANUP 2H	1H

PAINT
1 5H
728 1/2 + 5

728'1/2 + 11
Labor Day

$$728\frac{1}{2} + 12$$

MAT CUTTING 3 1/24

10
PICTURE
HAULING
6 H

 $728\frac{1}{2} \pm 25$

MAT & FRAME
8 6 + 1 = 7 H
728 1/2 + 10
Grandparents' Day

12
FRAMING
34

$$728\frac{1}{2} + 28$$

13
FRAMING
1 1/2 ft

$$728\frac{1}{2} + 28\frac{1}{2}$$

16

17

18

19

20

Rosh Hashanah

23

24

25

26

27

Yom Kippur

AUGUST

S	M	T	W	T	F	S
				1	2	3
4	5	6	7	8	9	10
11	12	13	14	15	16	17
18	19	20	21	22	23	24
25	26	27	28	29	30	31

OCTOBER

S	M	T	W	T	F	S
		1	2	3	4	5
6	7	8	9	10	11	12
13	14	15	16	17	18	19
20	21	22	23	24	25	26
27	28	29	30	31		

30

$$\begin{array}{r} 728\frac{1}{2} \\ 30\frac{1}{7} \end{array}$$

759

Picture
28 HAULING
H
728 1/2 + 30 1/2

29

OCTOBER 1985

SATURDAY
SUNDAY

MONDAY

TUESDAY

WEDNESDAY

THURSDAY

FRIDAY

SEPTEMBER
S M T W T F S
1 2 3 4 5 6 7
8 9 10 11 12 13 14
15 16 17 18 19 20 21
22 23 24 25 26 27 28
29 30

1

2

3

4

5

7

8

9

10

11

6

12

14

15

16

17

18

13

Columbus Day
(Obsvd.)

19

21

22

23

24

25

20

26

28

29

30

31

27

NOVEMBER
S M T W T F S
1 2
3 4 5 6 7 8 9
10 11 12 13 14 15 16
17 18 19 20 21 22 23
24 25 26 27 28 29 30

Halloween

NOVEMBER 1985

SATURDAY SUNDAY	MONDAY	TUESDAY	WEDNESDAY	THURSDAY	FRIDAY
	OCTOBER S M T W T F S 1 2 3 4 5 6 7 8 9 10 11 12 13 14 15 16 17 18 19 20 21 22 23 24 25 26 27 28 29 30 31	DECEMBER S M T W T F S 1 2 3 4 5 6 7 8 9 10 11 12 13 14 15 16 17 18 19 20 21 22 23 24 25 26 27 28 29 30 31			1
2	4	5	6	7	8
3		Election Day			
9	11	12	13	14	15
10	Veterans Day				
16	18	19	20	21	22
17					
23 30	25	26	27	28	29
24				Thanksgiving Day	

DECEMBER 1985

SATURDAY SUNDAY	MONDAY	TUESDAY	WEDNESDAY	THURSDAY	FRIDAY
	2	3	4	5	6
1					
7	9	10	11	12	13
8 Hanukkah					
14	16	17	18	19	20
15					
21	23	24	25	26	27
22			Christmas		
28	30	31		NOVEMBER S M T W T F S 1 2 3 4 5 6 7 8 9 10 11 12 13 14 15 16 17 18 19 20 21 22 23 24 25 26 27 28 29 30	JANUARY S M T W T F S 1 2 3 4 5 6 7 8 9 10 11 12 13 14 15 16 17 18 19 20 21 22 23 24 25 26 27 28 29 30 31
29					

JULIAN CALENDAR

	Jan.	Feb.	Mar.	Apr.	May	June	July	Aug.	Sept.	Oct.	Nov.	Dec.
1	001	032	061	092	122	153	183	214	245	275	306	336
2	002	033	062	093	123	154	184	215	246	276	307	337
3	003	034	063	094	124	155	185	216	247	277	308	338
4	004	035	064	095	125	156	186	217	248	278	309	339
5	005	036	065	096	126	157	187	218	249	279	310	340
6	006	037	066	097	127	158	188	219	250	280	311	341
7	007	038	067	098	128	159	189	220	251	281	312	342
8	008	039	068	099	129	160	190	221	252	282	313	343
9	009	040	069	100	130	161	191	222	253	283	314	344
10	010	041	070	101	131	162	192	223	254	284	315	345
11	011	042	071	102	132	163	193	224	255	285	316	346
12	012	043	072	103	133	164	194	225	256	286	317	347
13	013	044	073	104	134	165	195	226	257	287	318	348
14	014	045	074	105	135	166	196	227	258	288	319	349
15	015	046	075	106	136	167	197	228	259	289	320	350
16	016	047	076	107	137	168	198	229	260	290	321	351
17	017	048	077	108	138	169	199	230	261	291	322	352
18	018	049	078	109	139	170	200	231	262	292	323	353
19	019	050	079	110	140	171	201	232	263	293	324	354
20	020	051	080	111	141	172	202	233	264	294	325	355
21	021	052	081	112	142	173	203	234	265	295	326	356
22	022	053	082	113	143	174	204	235	266	296	327	357
23	023	054	083	114	144	175	205	236	267	297	328	358
24	024	055	084	115	145	176	206	237	268	298	329	359
25	025	056	085	116	146	177	207	238	269	299	330	360
26	026	057	086	117	147	178	208	239	270	300	331	361
27	027	058	087	118	148	179	209	240	271	301	332	362
28	028	059	088	119	149	180	210	241	272	302	333	363
29	029	060	089	120	150	181	211	242	273	303	334	364
30	030		090	121	151	182	212	243	274	304	335	365
31	031		091		152		213	244		305		366

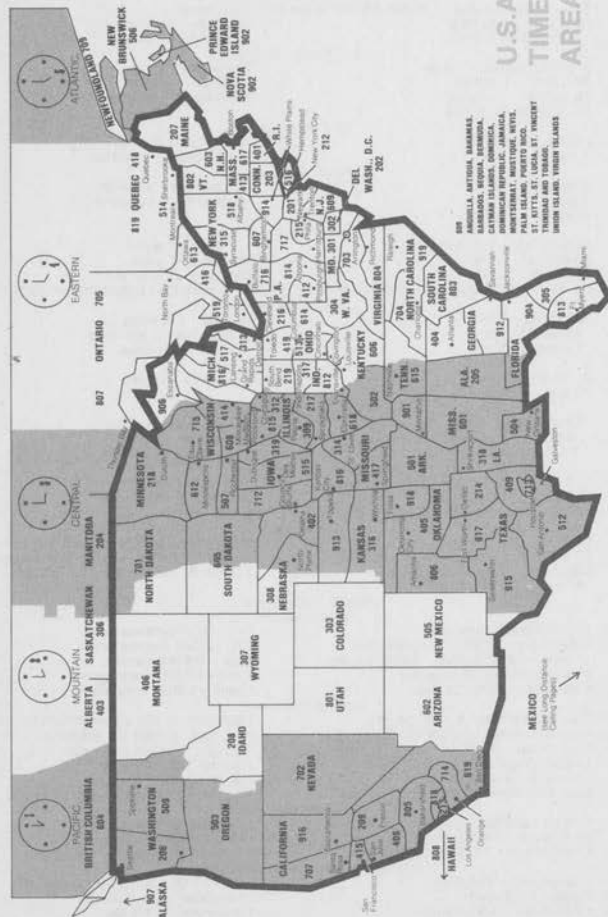
WEDDING ANNIVERSARIES

1st Paper	15th Crystal
2nd Cotton	20th China
3rd Leather	25th Silver
4th Fruits & Flowers	30th Pearl
5th Wood	35th Coral
6th Iron	40th Ruby
7th Wool	45th Sapphire
8th Bronze	50th Gold
9th Pottery	55th Emerald
10th Tin	60th Diamond
	75th Diamond

BIRTHSTONE & FLOWERS

January	Snowdrop	Garnet
February	Primrose	Amethyst
March	Daffodil	Aquamarine
April	Daisy	Diamond
May	Hawthorne	Emerald
June	Rose	Pearl
July	Larkspur	Ruby
August	Poppy	Peridot
September	Morning Glory	Sapphire
October	Calendula	Opal
November	Chrysanthemum	Topaz
December	Holly	Turquoise

IMPORTANT NUMBERS

[illegible]

WEIGHTS and MEASURES

Used for weighing gold, silver and jewels.

24 grains - 1 pwt.
20 pwts - 1 ounce

12 ounces - 1 pound

Apothecaries' Weight

The ounce and pound in this are the same as in troy weight.

20 grains - 1 scruple
3 scruples - 1 dram

8 drams - 1 ounce
12 ounces - 1 pound

Avoirdupois Weight

27 11/32 grains - 1 dram
16 drams - 1 ounce
16 ounces - 1 pound
25 pounds - 1 quarter

4 quarters - 1 cwt.
2,000 lbs. - 1 short ton
2,240 lbs. - 1 long ton

Dry Measure

2 pints - 1 quart
8 quarts - 1 peck

4 pecks - 1 bushel
36 bushels - 1 chaldron

Liquid Measure

4 gills - 1 pint
2 pints - 1 quart
4 quarts - 1 gallon

31 1/2 gallons - 1 barrel
2 barrels - 1 hogshead

Time Measure

60 seconds - 1 minute
60 minutes - 1 hour
24 hours - 1 day
28, 29, 30 or 31 days - 1 calendar month (30 days - 1 month in computing interest.)

7 days - 1 week
365 days - 1 year
366 days - 1 leap year

Long Measure

12 inches - 1 foot
3 feet - 1 yard
5 1/2 yards - 1 rod

40 rods - 1 furlong
8 furlongs - 1 sta. mile
3 miles - 1 league

Cloth Measure

2 1/2 inches - 1 nail
4 nails - 1 quarter

4 quarters - 1 yard

Square Measure

144 sq. inches - 1 sq. ft.
9 sq. ft. - 1 sq. yard
30 1/4 sq. yds. - 1 sq. rd.

40 sq. rods - 1 rood
4 roods - 1 acre
640 acres - 1 sq. mile

Surveyors' Measure

10 sq. chains or 160 sq. rods - 1 acre
640 acres - 1 sq. mile
36 sq. miles (6 miles sq.) - 1 township

7 92 inches - 1 link
25 links - 1 rod
4 rds. - chain

Cubic Measure

1 728 cu. in. - 1 cu. ft.
27 cubic ft. - 1 cu. yd.
128 cu. ft. - 1 cord (wood)
40 cu. ft. - 1 ton (shpg.)

2150 42 cu. inches - 1 standard bushel
231 cubic inches - 1 standard gallon
1 cubic ft. - about 4/5 of a bushel

Metric Equivalents

Linear Measure

1 centimeter - 0.393 in.
1 decimeter - 3.937 in. - 0.328 feet
1 meter - 39.37 inches - 1.0936 yards
1 decameter - 1.9844 rods
1 kilometer - 0.62137 mile

1 in. - 2.54 centimeters
1 ft. - 3.048 decimeters
1 yd. - 0.9144 meter
1 rod - 0.5029 decameter
1 mile - 1.6093 kilometers

Square Measure

1 sq. centimeter - 0.1550 sq. in.
1 sq. decimeter - 0.1076 sq. ft.
1 sq. meter - 1.196 sq. yds.
1 acre - 3.954 sq. rds.
1 hectare - 2.47 acres
1 sq. kilometer - 0.386 sq. m.

1 sq. inch - 6.453 sq. centimeters
1 sq. foot - 9.2903 sq. decimeters
1 sq. yd. - 0.8361 sq. meter
1 sq. rd. - 0.2529 acre
1 acre - 0.4047 hectare
1 sq. m. - 2.59 square kilometers

Weights

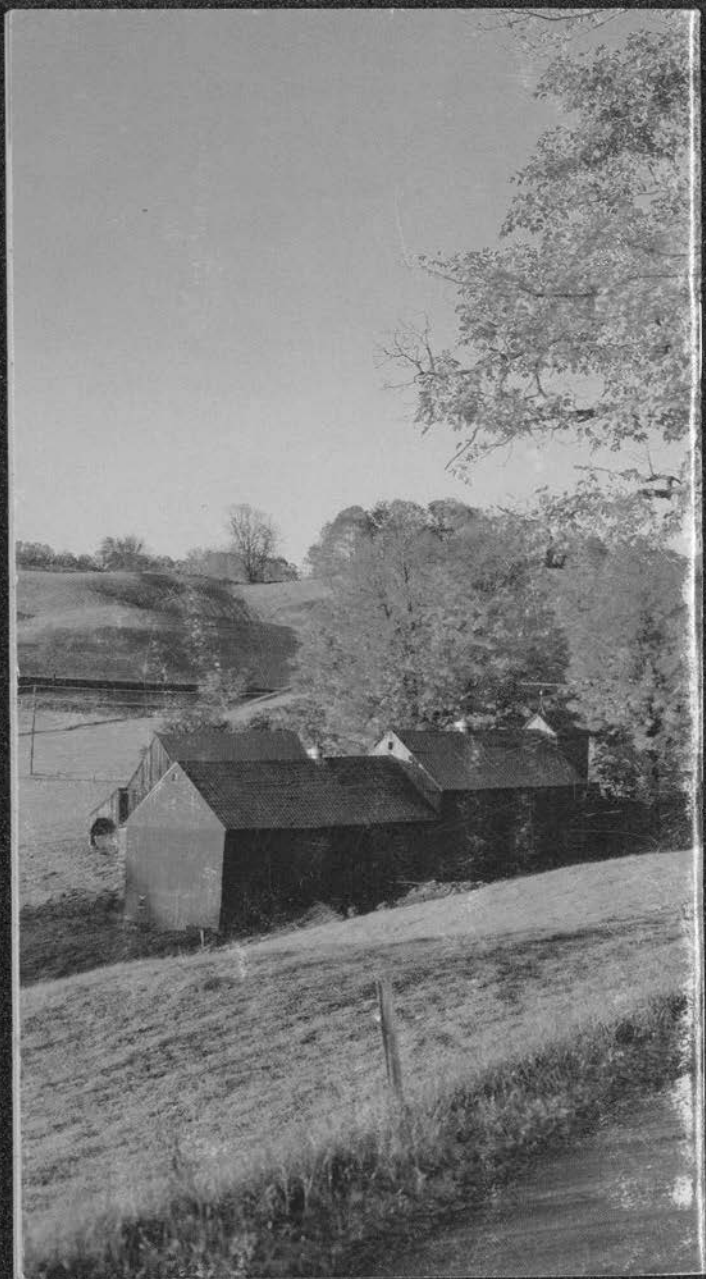
1 gram - 0.03527 oz.
1 kilogram - 2.2046 lbs.
1 metric ton - 1.1023 English ton

1 oz. - 28.35 grams
1 lb. - 0.4536 kilogram
1 English ton - 0.9072 metric ton

Approximate Metric Equivalents

1 decimeter - 4 inches
1 meter - 1 1/4 yards
1 kilometer - 5/8 of a mile
1 hectare - 2 1/2 acres
1 stere or cu. meter - 1/4 of a cord

1 liter - 1.06 qts. liquid - 0.9 qt. dry
1 hectoliter - 2 1/2 bushels
1 kilogram - 2 1/5 lbs.
1 metric ton - 2,200 lbs.



Guindon

1982 datebook



GUINDON

minneapolis Tribune

Guindon's last look at Minnesota

Guindon

**1982
datebook**

**Cartoons/Richard Guindon
Design/Michael Carroll**

This is a new collection of cartoons that originally appeared in the Minneapolis Tribune.

Published by the Minneapolis Tribune
Minneapolis Star & Tribune Company
425 Portland Av./Minneapolis/ Minn./ 55488

Copyright © 1981/Minneapolis Star & Tribune Company



Partially Scanned Material

Some pages of this item have not been digitized due to copyright considerations. The original can be viewed at the Minnesota Historical Society's Gale Family Library in Saint Paul, Minnesota. For more information, visit www.mnhs.org/library/.

January /

3

Sunday /

4

Monday /

5

Tuesday /

3 1/2 HOURS - SNOW FLAKE AIR BRUSH TRIALS

3 1/2

6

Wednesday /

1 1/2 HOURS SLIDES

2 1/2 HOURS DRAWING

7 1/2

7

Thursday /

8

Friday /

2 1/2 HOURS ENTERTAINMENT

10

9

Saturday /

January/

10

Sunday/

$\frac{1}{2}$ HOUR ALWS SUBMISSION

7 $\frac{1}{2}$ HOURS PAINTING

18

11

Monday/

1 HOUR PAINTING

19

12

Tuesday/

2 $\frac{1}{2}$ HOURS PAINTING

21 $\frac{1}{2}$

13

Wednesday/

$\frac{1}{2}$ HOUR-STORY

$\frac{1}{2}$ HOURS PAINTING

①

SIRLEY HOUSE

15 $\frac{1}{2}$

1 HOUR STRETCHES & CLEANUP

24 $\frac{1}{2}$

14

Thursday/

$\frac{1}{2}$ HOUR STRETCH

1 HOUR DRAWING

26

15

Friday/

16

Saturday/

$\frac{1}{2}$ HOUR PHOTOGRAPHED

9 $\frac{1}{2}$ HOURS PAINTING

36

January/

17

Sunday/

1 HOUR STRETCHES & CLEANUP

6 1/2 HOURS PAINTING @ MINNEHaha CREEK ^{17 1/2}

1 HOUR PHOTOGRAPHY

4 1/2

18

Monday/

C.S.B. MEETING

19

Tuesday/

20

Wednesday/

21

Thursday/

1/2 HOUR - SLIDES

45

22

Friday/

23

Saturday/

January /

24

Sunday /

1/2 HOUR SLIDE REVIEW

45 1/2

25

Monday /

26

Tuesday /

27

Wednesday /

28

Thursday /

1 HOUR READING

46 1/2

29

Friday /

30

Saturday /

5 HOURS SKETCH TRIP

51 1/2

January/

31

Sunday/ 3 HOURS DEMONSTRATION PREPARATION
1 HOUR DRAWING & PAINTING • VALUE STUDY
2 HOURS SLIDE REVIEW

5 1/2

Notes/

February /

Notes /

1

Monday /

2

Tuesday /

$\frac{3}{4}$ HOUR READING

$\frac{3}{4}$ HOUR DRAWING

1 1/2

3

Wednesday /

$\frac{3}{4}$ HOUR DEMONSTRATION PREP

2 1/4

4

Thursday /

2 1/4 HOURS DEMONSTRATION PLUS TRAVEL

④

• WATERCOLOR

4 1/2

5

Friday /

1/2 MAGAZINE CLIPPING

6

6

Saturday /

7 HOURS PAINTING

⑤

PENINSULA HOUSES

13

February/

7

Sunday/

4 HOURS SKETCH TRIP

17

8

Monday/

1 HOUR SUBJECT RESEARCH & DRAWING

18

9

Tuesday/

3 HOURS PAINTING

21

10

Wednesday/

11

Thursday/

1/2 HOUR SKETCH REVIEW

1/2 HOUR PAINTING

22

12

Friday/

13

Saturday/

2 1/2 HOURS - SKETCHING TRIP

24 1/2

February /

14

Sunday / Valentine's Day /

8 1/2 HOURS PAINTING

• CARPENTER'S HOUSE

33

15

Monday / Presidents' Day /

PHOTOGRAPHY AND RECORDS

AND STRETCHES

2 HOURS

35

16

Tuesday /

17

Wednesday /

1 HOUR READING

1 HOUR SLIDE REVIEW

1 HOUR DRAWING

38

18

Thursday /

~~1 HOUR READING~~

19

Friday /

20

Saturday /

February /

21

Sunday /

22

Monday /

23

Tuesday /

PAINTING 1 1/2 HOURS

39 1/2

24

Wednesday / Ash Wednesday /

25

Thursday /

READING 1 HOUR
PAINTING 2 HOURS

42 1/2

26

Friday /

27

Saturday /

PAINTING 8 1/2 HOURS

~~8 1/2~~

51

February /

28

Sunday /

PAINTING 7 HOURS • AT THE SULEYMANIYE MOSQUE
TEACHING 2 1/2 HOURS

60 1/2

Notes /

57 1/2

TO DATE

118

March/

Notes/

1

Monday/

PHOTOGRAPHY $\frac{3}{4}$ HOUR

SLIDE SELECTION & DRAWING $1\frac{1}{4}$ HOURS

2

2

Tuesday/

READING 1 HOUR

PAINTING 3 HOURS

6

3

Wednesday/

READING 3 HOURS

PAINTING 3 HOURS

12

4

Thursday/

READING 1 HOUR

12

5

Friday/

READING $\frac{1}{2}$ HOUR

$12\frac{1}{2}$

6

Saturday/

PAINTING $6\frac{1}{2}$ HOURS

18

March/

7

Sunday/

PAINTING $1\frac{3}{4}$ HOUR • MYKONOS MILLS

PHOTOGRAPHY $\frac{3}{4}$ HOUR

DRAWING $1 + 1\frac{1}{2}$ HOUR

24

8

Monday/

PAINTING $2\frac{1}{2}$ HOURS

26 $\frac{1}{2}$

9

Tuesday/

READING 1 HOUR

PAINTING $2\frac{1}{2}$ HOURS

30

10

Wednesday/

PAINTING $2\frac{1}{2}$ HOURS

32 $\frac{1}{2}$

11

Thursday/

12

Friday/

13

Saturday/

FRAMING BOTTOM BACKS

$\frac{3}{4}$ HOURS

33 $\frac{1}{4}$

March/

32 1/4

14

Sunday/

STRETCHES 1/4 HOUR
PAINTING 7 HOURS
TEACHING 3 1/2 HOURS

44

15

Monday/

16

Tuesday/

PAINTING 3 HOURS • MYKONOS REFLECTIONS

47

17

Wednesday/ St. Patrick's Day/

18

Thursday/

19

Friday/

20

Saturday/

GALLERY PREVIEW 1 HOUR
SLIDES 1 HOUR

49

March/

21

Sunday/

SLIDE REVIEW 3 HOURS

WATERCOLORS USA
PICTURE SELECTION 2 HOURS

DRAWING 2 HOURS

56

22

Monday/

23

Tuesday/

LETTER WRITING 3 HOURS

59

24

Wednesday/

PAINTING 2 1/2 HOURS

61 1/2

25

Thursday/

READING 1/2 HOUR

PAINTING 2 HOURS

64

26

Friday/

READING 1/2 HOUR

PAINTING 3 HOURS

68

27

Saturday/

PAINTING 5 1/2 HOURS

PHOTOGRAPHY 1/2 HOUR

MYKONOS
~~MYKONOS~~
HARBOR

74

March/

28

Sunday/

PHOTOGRAPHY - SKETCHES 1 HOUR
 SLIDE REVIEW AND
 DRAWING 2 HOURS
 TEACHING 3 HOURS
 PAINTING 5 1/2 HOURS

85 1/2

29

Monday/

PAINTING 2 HOURS
 • LOUISVILLE SWAMP

87 1/2

30

Tuesday/

PHOTOGRAPHY 1/2 HOUR
 DRAWING 1 HOUR
 PAINTING 1/2 HOUR
 READING 1/2 HOUR

91

31

Wednesday/

SLIDE REVIEW 1/2 HOUR
 READING 1/2 HOUR

92

Notes/

92

118

TO DATE 210

April/

Notes/

1

Thursday/

ARCHITECTURAL RENDERING 15 HOURS

15

2

Friday/

3

Saturday/

PAINTING 11 HOURS

13 PAINTINGS

26

April/

4

Sunday/ Palm Sunday/

PAINTING 5 HOURS
LOUISIANA SWAMP • TREE SWAMP

31

5

Monday/

STRETCH & PAINTING 5 1/4 HOURS
READING 3/4 HOURS

37

6

Tuesday/

PAINTING & MATING 2 1/2 HOURS
PHOTOGRAPHY 1 1/2 HOURS
(ARCHITECTURAL RENDERING 8 HOURS TOTAL)

41

7

Wednesday/

CHURCH

8

Thursday/ Passover/

9

Friday/ Good Friday/

SWAMP

10

Saturday/

CHURCH

April/

11

Sunday/ Easter/

TEACHING 3½ HOURS

44½

12

Monday/

READING 1½ HOUR

SCRAPBOOKS 1 HOUR

DRAWING ½ HOUR

SKETCHES ½ HOUR

48

13

Tuesday/

FRAMING 2 HOURS

50

14

Wednesday/

15

Thursday/

16

Friday/

17

Saturday/

SLIDE REVIEW 2 HOURS

52 HOURS

April/

18

Sunday/

SLIDE NOTES - TYPE UP
2 HOURS

54 HOURS

19

Monday/

STUDIO CLEANUP 1 HOUR
PAINTING 4 HOURS

59

20

Tuesday/

CLIPPING WILDLIFE WATERCOLORS
2 HOURS

61

21

Wednesday/

22

Thursday/

23

Friday/

24

Saturday/

PAINTING 8 HOURS
ARRANGEMENT 1/2 HOUR

69 1/2

April/

25

Sunday/

TEACHING 2 1/2 HOURS

PAINTING 4 HOURS • TUGBOAT

76

26

Monday/

PHOTOGRAPHY 1/2 HOUR

CLIPPING & MOUNTING 1 1/2 HOURS

78

27

Tuesday/

PICTURE MOUNTING 2 HOURS

80

28

Wednesday/

PICTURE MOUNTING 2 HOURS

82

29

Thursday/

READING 1/2 HOUR

RECORDS 1 1/2 HOURS

84

30

Friday/

84
210

TO DATE 294

Notes/

May/

2

Sunday/

3

Monday/

FRAMING 2½ HOURS

2½

4

Tuesday/

FRAMING 3½ HOURS

6

5

Wednesday/

FRAMING 2 HOURS
SLIDE REVIEW 1 HOUR

9

6

Thursday/

SLIDES 1 HOUR

10

7

Friday/

8

Saturday/ SUPPLIES 1½ HOURS }
MILLS GALLERY 1 HOUR } 4½
FRAMING 2 HOURS }
(MAY CUT ETC.)

14½

May /

9

Sunday / Mother's Day /

W.C. SETUP $\frac{1}{2}$ HOUR
PICTURE FRAMING 6 HOURS
TEACHING 3 HOURS } $9\frac{1}{2}$

24

10

Monday /

11

Tuesday /

MAT CUTTING 2 HOURS
STUDIO CLEANUP

26

12

Wednesday /

PICTURE FRAMING 3 HOURS

29

13

Thursday /

14

Friday /

PICTURE FRAMING & CRATING
2 $\frac{1}{2}$ HOURS

31 $\frac{1}{2}$

15

Saturday /

TRAVEL (PIC HAULING) 2 $\frac{1}{2}$ HOURS

33

May /

32

16

Sunday /

17

Monday /

18

Tuesday /

19

Wednesday /

20

Thursday /

21

Friday /

READING 1/2 HOUR

33 1/2

22

Saturday /

PICTURE HAULING 1 1/2 HOURS

TEACHING 2 1/2 HOURS

37 1/2

May /

37 1/2

23

Sunday / RECORDS 1/2 HOUR

38

24

Monday /

25

Tuesday /

26

Wednesday /

27

Thursday /

28

Friday /

29

Saturday /

May /

30

Sunday /

31

Monday / Memorial Day /

38

Notes /

38

294

TO DATE 332

June/

Notes/

1

Tuesday/

2

Wednesday/

3

Thursday/

4

Friday/

5

Saturday/

W.C CLASS PREP
3 HOURS

3

June/

13

Sunday/

14

Monday/ Flag Day/

15

Tuesday/

16

Wednesday/

LUNCHEON MEETING 2 1/2 HOURS

13 1/2

17

Thursday/

18

Friday/

19

Saturday/

June/

6

Sunday/ CORRESPONDENCE 3 HOURS

TEACHING 3 HOURS

9

7

Monday/

8

Tuesday/

ART CENTER OF MINNESOTA OPENING

2 HOURS

11

9

Wednesday/

10

Thursday/

11

Friday/

12

Saturday/

June/

20

Sunday/ Father's Day/ INCOME ANALYSIS 2 HOURS

TEACHING 2½ HOURS

18

STUDIO CLEANUP 2½

20½

21

Monday/

STUDIO CLEANUP ½ HOURS

22

22

Tuesday/

CLIPPING MOUNTING 3 HOURS

25

23

Wednesday/

CORRESPONDENCE

1½ HOURS ***

26½

24

Thursday/

25

Friday/

26

Saturday/

June/

27

Sunday/WATERCOLOR REVIEW=

STUDIO CLEANUP

WC CUT DOWN-FRAMING

WC DESTRUCTION - SKETCHES

RECORD & PRICE UP DATE

} 7 1/2 HOURS

34

28

Monday/PICTURE FRAMING 1 HOUR

UNCRATING 1/2 HOUR

35 1/2

29

Tuesday/

30

Wednesday/

Notes/

35 1/2

332

367 1/2

July /

Notes /

1

Thursday /

W/C RETURNS 1 HOUR

~~35/2~~

1

~~35/2~~

2

Friday /

3

Saturday /

DEBT COLLECTION 1 HOUR

2

July /

4

Sunday / Independence Day /

CORRESPONDENCE | HOUR

5

Monday /

DEMONSTRATION 3 HOURS

5

6

Tuesday /

7

Wednesday /

8

Thursday /

9

Friday /

10

Saturday /

July/

11

Sunday/

CORRESPONDENCE 1 HOUR

6

12

Monday/

WATERCOLOR DEWIREING & RACKING
1 HOUR

7

13

Tuesday/

14

Wednesday/

15

Thursday/

PHOTOGRAPHY 1/2 HOUR
W.C. PACKING 1/2 HOUR

8

16

Friday/

17

Saturday/

PACKING 1/2 HOUR
PHOTOGRAPHY 2 HOURS

10 1/2

July/

18

Sunday/

WATERCOLOR PAINTING 2 1/2 HOURS

13
~~12 1/2~~

UNPACK

19

Monday/

UNPACKING 1 HOUR

14

20

Tuesday/

21

Wednesday/

22

Thursday/

23

Friday/

DEHN - OHARA EXHIBITION

2

2 HOURS

16

24

Saturday/

SLIDE REVIEW WATERCOLOR SELECTIONS

1 HOUR

17

July/

25

Sunday/

W&TB2 COLOR FORMS

STATE FAIR - SKY 82

1 HOUR

REMOVE HANGERS

18

26

Monday/

27

Tuesday/

28

Wednesday/

29

Thursday/

30

Friday/

31

Saturday/

LESSONS

2 1/2

20 1/2

367 1/2

388

20 1/2

August/

1

Sunday/

MAT CUTTING AND
PICTURE FRAMING 6 HOURS

2

Monday/

3

Tuesday/

WATERCOLOR RETURNS $3\frac{1}{4}$ HOUR

$6\frac{3}{4}$

4

Wednesday/

CORRESPONDENCE $3\frac{1}{4}$ HOUR

$7\frac{1}{2}$

5

Thursday/

6

Friday/ PICTURE HANGING 1

$8\frac{1}{2}$

7

Saturday/

August/

8

Sunday/

9

Monday/

10

Tuesday/

WATERCOLOR FRAMING 1 HOUR
& MAINTENANCE

9½

11

Wednesday/

WATERCOLOR PICKUP 1 HOUR

10½

12

Thursday/

SLIDE REVIEW ½ HOUR

11

13

Friday/

WATERCOLOR PICKUP 1 HOUR

12

14

Saturday/

August/

15

Sunday/

WATER COLOR LESSON 2 1/2 HOURS

14 1/2

16

Monday/

17

Tuesday/

N★WC SOC

2 1/2 HOURS

17

18

Wednesday/

19

Thursday/

20

Friday/

21

Saturday/

August/

22

Sunday/

23

Monday/

24

Tuesday/

25

Wednesday/

26

Thursday/ READING 1 HOUR

10

27

Friday/

28

Saturday/

August/

29

Sunday/

SKETCH TRIP 3 HOURS

21

30

Monday/

31

Tuesday/

Notes/

21

388
21

409

September /

12

Sunday /

13

Monday /

14

Tuesday /

15

Wednesday /

16

Thursday /

WATERCOLOR DEMO 3

17

Friday /

18

Saturday / Rosh Hashanah /

September/

19

Sunday/

20

Monday/

21

Tuesday/

READING 1/2 HOUR

3 1/2

22

Wednesday/

READING 1/2 HOUR

4

23

Thursday/

INVOICE & CORRESPONDENCE
READING 2 HOURS

6

24

Friday/

25

Saturday/

September/

26

Sunday/

SKETCHING TRIP 3 HOURS

9

27

Monday/ Yom Kippur/

PICTURE CLEANING, FRAMING & STACKING
3 HOURS

12

28

Tuesday/

29

Wednesday/

READING $\frac{1}{2}$ HOURS

$12\frac{1}{2}$

30

Thursday/

READING $1\frac{1}{2}$ HOURS

14

Notes/

409
14
—
423

October/

Notes/

1

Friday/ PICTURE HAULING 2½ HOURS

2

Saturday/

October/

3

Sunday/

TEACHING 3½ HOURS

6

4

Monday/

5

Tuesday/

6

Wednesday/

7

Thursday/

8

Friday/

9

Saturday/

October /

10

Sunday /

11

Monday / Columbus Day /

12

Tuesday /

13

Wednesday /

14

Thursday /

15

Friday /

16

Saturday / PICTURE HAVING 1 HOUR