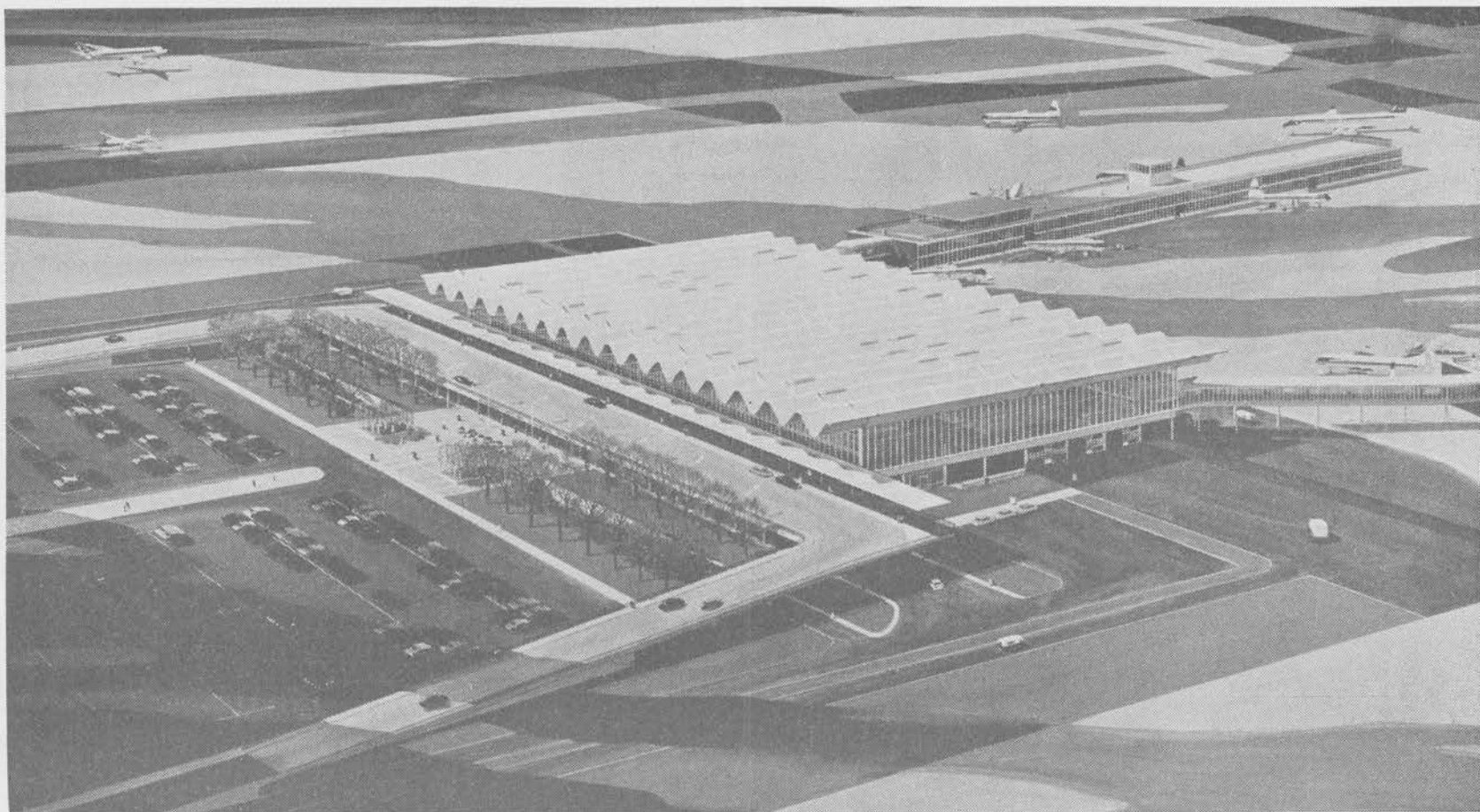




F. R. Meisch Papers.

Copyright Notice:

This material may be protected by copyright law (U.S. Code, Title 17). Researchers are liable for any infringement. For more information, visit www.mnhs.org/copyright.



Minneapolis-Saint Paul Airport Terminal

(Please refer to inside panel for ARGO-TEX specifications.)

WEAR A COIFFURE
SHAPED LIKE
MT. KILERTINGUIT

THE WHITE RIBBON
MEANS: "I WOULD LIKE
TO RE-MARRY"



BECAME COMPLETELY BLIND IN 1750-
YET HE CONTINUED TO RIDE TO THE
HOUNDS FOR MANY YEARS
-WITH A COMPANION RINGING A
SMALL BELL TO WARN HIM
WHEN TO JUMP HIS HORSE
OVER OBSTACLES!

Handwritten signature



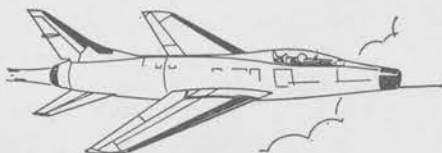
THE FIRST BICYCLE
MANUFACTURED IN ITALY
WAS BUILT TO RESEMBLE A HORSE
1819

Ready Soon...



A SNAIL RACE
WAS STAGED IN
PONTYPRIDD, WALES
FOR A WAGER OF \$5,000
(1820)

Argo-Tex Industrial Granite Installation at the New Wold Chamberlain Airport Terminal*



ARGO-TEX is a new Arrigoni
flooring, using a unique water
absorption process to capture the
time-tested beauty and endur-
ance of a Terrazzo floor.

WHAT IS ARGO-TEX?

A controlled mixture of one part
Portland cement, one part fine aggregate, and two parts coarse aggre-
gate by volume, and 8 ounces of Desco No. 1 liquid. ARGO-TEX
floors are heavily ground, filled, polished and sealed for a smooth,
beautiful Terrazzo appearance. The secret? Our water absorption
method — compaction, vacuum and a patented liquid admix —
and installation by our experienced crews.

WHERE IS ARGO-TEX USED?

It's excellent for schools,
hospitals, airports and office buildings — and wherever appearance
and floor durability are most important.

WHY CHOOSE ARGO-TEX?

It was selected for the new
Minneapolis-Saint Paul Airport terminal because it can take *heavy*
traffic for years without wear or erosion. The Twin City Testing
and Engineering Laboratory, Inc. report indicates ARGO-TEX has
5,270 strength-pounds per square inch. Combine this with lower
upkeep costs and design beauty sealed in for the life of a building,
and you've got a sure winner.

INSTALLATION?

Expertly accomplished by the makers of
ARGO-TEX. From 1/4" to 8" thickness can be applied, but where
appearance is most vital, a 1/4" to 1" topping is used. Divider strips
are placed at logical expansion and contraction joints, and wherever
desired.

*For a look at the new Minneapolis-
St. Paul Airport Terminal Building,
see back of this folder.



ARRIGONI BROTHERS COMPANY

(FORMERLY AMERICAN TERRAZZO CO., INC.)

33 YEARS OF PROGRESS

1928 -- 1961

TERRAZZO -- TILE -- MARBLE -- CEMENT

Specify Terrazzo for Economy and Everlasting Beauty

Midway
5-9321

JULY 1961							
SUN	MON	TUE	WED	THU	FRI	SAT	
2	3	4	5	6	7	8	1
9	10	11	12	13	14	15	
16	17	18	19	20	21	22	
23	24	25	26	27	28	29	

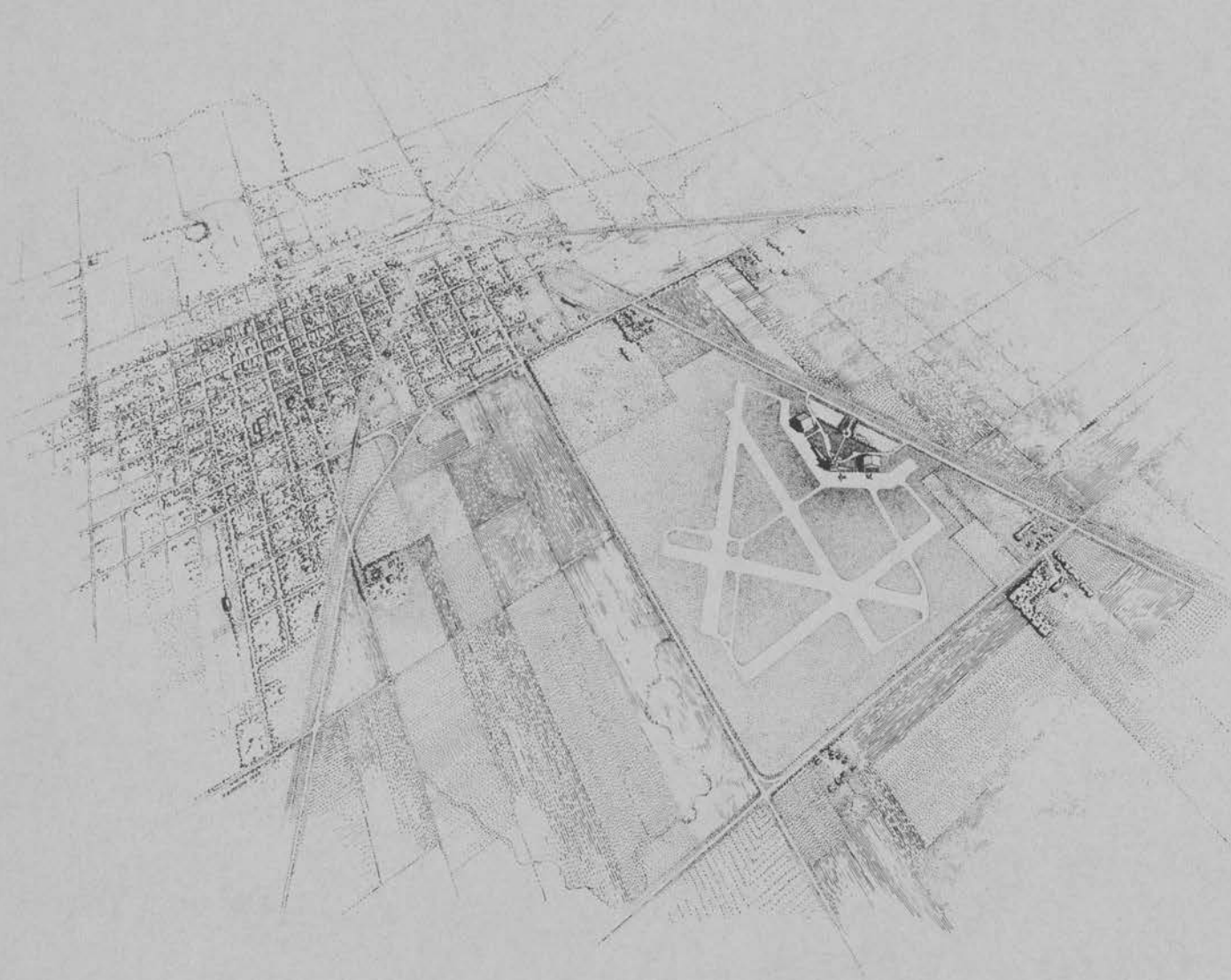
817 Vandalia St.
St. Paul 14, Minn.



REDWOOD FALLS MUNICIPAL AIRPORT

STATE OF MINNESOTA—DEPARTMENT OF AERONAUTICS
 IN COOPERATION WITH
 CITY COUNCIL OF REDWOOD FALLS
 REDWOOD FALLS — MINNESOTA
 P. C. BETTENBURG AND CO.
 ARCHITECTS AND ENGINEERS
 ST. PAUL — MINNESOTA

3-2-33



PIPESTONE MUNICIPAL AIRPORT

PERSPECTIVE VIEW			
PRELIMINARY PLANS FOR PIPESTONE MUNICIPAL AIRPORT PIPESTONE - MINNESOTA			
P. C. BETTENBURG AND COMPANY			
ARCHITECTS AND ENGINEERS			
DESIGNED BY P. C. BETTENBURG	APPROVED BY P. C. BETTENBURG	DATE JULY 1934	BY P. C. BETTENBURG
APPROVED BY STATE OF MINNESOTA		APPROVED BY CIVIL ENGINEER	
By: <i>W. H. Doolittle</i>		By: <i>Carl E. Fong</i>	

