

DATE OF FLIGHT	AIRCRAFT AND ENGINE USED ON THESE FLIGHTS			DURATION OF FLIGHT	
	MAKE OR TYPE OF AIRCRAFT	IDENTIFICATION OR LICENSE NO.	MAKE OR TYPE OF ENGINE	BROUGHT FORWARD	HRS. MIN.
				3808	8
12/18/30	Fleetster		Hornet	2	55
12/25/30	Hamilton	N.C. 7523	Hornet	3	00
12/25/30	Hamilton	N.C. 7523	Hornet	3	25
12/28/30	Laird	N.R. 7087	J. 6.9.	4	45
12/29/30	"	"	"	2	00
1/2/31	"	"	"	1	45
1/4/31	"	"	"	4	00
1/4/31	"	"	"	1	35
1/5/31	"	"	"	3	25
1/16/31	Hamilton	N.E. 7791	Hornet		40
1/21/31	"	N.C. 537E	"	2	30
2/10/31	Laird	N.R. 7087	Wright	1	45
TOTAL TIME TO BE CARRIED FORWARD				3839	53

STATE POINTS BETWEEN WHICH FLIGHTS WERE MADE, OR IF LOCAL FLIGHTS, STATE NATURE OF SUCH FLIGHTS. IF SERIOUS DAMAGE TO AIRCRAFT OCCURS, MAKE NOTATION UNDER REMARKS. CHAPTER 5 SEC. 57 DEPT. OF COMMERCE REGULATIONS.

FROM	TO	REMARKS
Mpls.	Chicago	Ferry.
St. Paul	Omaha	Reg. Regular.
Omaha	St. Paul	Reg. Regular.
St. Paul	Moundville, Wn.	Ferry
Moundville, Wn.	Wash. D.C.	Ferry
Wash. D.C.	N.Y. City.	Ferry
Fargo	Dayton, Ohio	Ferry
Dayton, Ohio	Chicago	Ferry
Chicago	St. Paul	Ferry Reg.
Fargo	Grand Forks	Ferry
St. Paul	St. Paul	Test.
St. Paul	Milwaukee	Ferry.

I CERTIFY THE ABOVE FLIGHTS WERE MADE. Chas. W. Holman
SIGNATURE OF PILOT

ATTESTED BY: Geo. O. Miles Asst. Oper. Mgr.

DATE OF FLIGHT	AIRCRAFT AND ENGINE USED ON THESE FLIGHTS			DURATION OF FLIGHT	
				HRS.	MIN.
	MAKE OR TYPE OF AIRCRAFT	IDENTIFICATION OR LICENSE NO.	MAKE OR TYPE OF ENGINE	BROUGHT FORWARD	
				3839	53
2/11/31	Laird	N.R. 7087	Wright		35
2/14/31	"	"	"		30
2/12/31	"	"	"	1	10
2/13/31	"	"	"	1	45
2/15/31	Hainault	N.C. 7091	Hornet		40
2/15/31	"	"	"		40
2/24/31	Laird	N.R. 7087	J. 6.9	1	25
2/24/31	"	"	"		15
2/24/31	"	"	"		15
2/24/31	"	"	"		15
2/24/31	"	"	"		25
2/25/31	"	"	"		35

TOTAL TIME TO BE CARRIED FORWARD

3848 23

STATE POINTS BETWEEN WHICH FLIGHTS WERE MADE, OR IF LOCAL FLIGHTS, STATE NATURE OF SUCH FLIGHTS. IF SERIOUS DAMAGE TO AIRCRAFT OCCURS, MAKE NOTATION UNDER REMARKS. CHAPTER 5 SEC. 57 DEPT. OF COMMERCE REGULATIONS.

FROM	TO	REMARKS
Milwaukee	Chicago	Ferry
Chicago	Milwaukee	"
Milwaukee	Barraboo	Ferry
Barraboo	St. Paul	"
St. Paul	Rochester	Ferry
Rochester	St. Paul	"
St. Paul	Green Bay	"
Green Bay	Appleton	"
Appleton	Shkosh	"
Shkosh	Indus	"
Indus	Milwaukee	"
Milwaukee	Chicago	"

I CERTIFY THE ABOVE FLIGHTS WERE MADE.

Chas. W. Holman
SIGNATURE OF PILOT

ATTESTED BY

GEO. O. Miles Asst. Ops. Mgr

DATE OF FLIGHT	AIRCRAFT AND ENGINE USED ON THESE FLIGHTS			DURATION OF FLIGHT	
	MAKE OR TYPE OF AIRCRAFT	IDENTIFICATION OR LICENSE NO.	MAKE OR TYPE OF ENGINE	BROUGHT FORWARD	
				3848	23
2/26/31	Saund	NR 7087	J. 6.9.	2	17
3/2/31	"	"	"	2	10
3/9/31	"	"	"	1	20
3/3/31	"	"	"	1	50
3/6/31	Ford	NC 8410	3 Wasp		10
3/24/31	Saund	NR 7087	J. 6.9.	3	30
3/25/31	Stearman	—	Wasp Junior		30
3/28/31	Saund	NR 7087	J. 6.9.	4	50
3/29/31	"	"	"	5	30
4/2/31	"	"	"	4	45
4/2/31	"	"	"	2	15
4/7/31	Ford	NC 8419	3 Wasp		15

TOTAL TIME TO BE CARRIED FORWARD

3877 40

STATE POINTS BETWEEN WHICH FLIGHTS WERE MADE, OR IF LOCAL FLIGHTS, STATE NATURE OF SUCH FLIGHTS. IF SERIOUS DAMAGE TO AIRCRAFT OCCURS, MAKE NOTATION UNDER REMARKS. CHAPTER 5 SEC. 57 DEPT. OF COMMERCE REGULATIONS.

FROM	TO	REMARKS
Chicago	St. Paul	Ferry
St. Paul	Chicago	"
Chicago	Green Bay	"
Green Bay	St. Paul	"
St. Paul	St. Paul	Test
St. Paul	Tulsa Okla.	Ferry
Tulsa	Tulsa	Test
Tulsa	St. Paul	Ferry
St. Paul	Wash D.C.	Ferry
Wash D.C.	Chicago	Ferry
Chicago	St. Paul	Ferry
St. Paul	—	Test

I CERTIFY THE ABOVE FLIGHTS WERE MADE.

Chas. W. Holman -
SIGNATURE OF PILOT

ATTESTED BY

W. O. Mee - Asst. Dir. Mgr.

DATE OF FLIGHT	AIRCRAFT AND ENGINE USED ON THESE FLIGHTS			DURATION OF FLIGHT	
	MAKE OR TYPE OF AIRCRAFT	IDENTIFICATION OR LICENSE NO.	MAKE OR TYPE OF ENGINE	BROUGHT FORWARD	
				3877	40
4/9/31	Land	RR 7087	J. 6. 9.	2	05
4/9/31	"	"	"	2	10
4/10/31	"	Special Queen	Wasp Jr.	1	05
4/11/31	"	RR 7087	J. 6. 9.	1	40
4/11/31	"	RR 7087	"		40
4/11/31	"	"	"	1	40
4/15/31	Ford	N.C. 8419	3 Wasp		45
4/19/31	Land	RR 7087	J. 6. 9.	2	45
4/19/31	Wasp Cabin	—	—		40
4/21/31	Land	RR 7087	J. 6. 9.	4	10
4/22/31	"	"	"		35
4/22/31	"	"	"		40
TOTAL TIME TO BE CARRIED FORWARD				3896	05

STATE POINTS BETWEEN WHICH FLIGHTS WERE MADE, OR IF LOCAL FLIGHTS, STATE NATURE OF SUCH FLIGHTS. IF SERIOUS DAMAGE TO AIRCRAFT OCCURS, MAKE NOTATION UNDER REMARKS. CHAPTER 5 SEC. 57 DEPT. OF COMMERCE REGULATIONS.

FROM	TO	REMARKS
St. Paul	Chicago	Ferry.
Chicago	Akron	Ferry.
Akron	Detroit	Ferry.
Detroit	Chicago	Ferry.
Chicago	Milwaukee	Ferry.
Milwaukee	St. Paul	Ferry.
St. Paul	—	Test.
Detroit Mich	Wash. D. C.	Ferry.
Detroit	Detroit	Test.
Wash. D. C.	Chicago	Ferry.
Chicago	Mil.	"
Mil.	Madison	"

I CERTIFY THE ABOVE FLIGHTS WERE MADE.

SIGNATURE OF PILOT

ATTESTED BY

DATE OF FLIGHT	AIRCRAFT AND ENGINE USED ON THESE FLIGHTS			DURATION OF FLIGHT	
				HRS.	MIN.
	MAKE OR TYPE OF AIRCRAFT	IDENTIFICATION OR LICENSE NO.	MAKE OR TYPE OF ENGINE	BROUGHT FORWARD	
				3896	05
4/22/31	Land.	N.R. 7087	J. 6.9.		26
4/23/31	"	"	"		30
4/23/31	Liberty		Wasp	1	00
4/23/31	Land.	N.R. 7087	J. 6.9.		30
4/23/31	"	"	"		30
4/23/31	"	"	"		30
4/24/31	"	"	"		30
4/24/31	"	"	"	2	20
4/27/31	"	"	"		42
4/28/31	"	"	"		50
5/1/31	"	"	"		45
5/1/31	"	"	"	1	00
TOTAL TIME TO BE CARRIED FORWARD				3905	38

STATE POINTS BETWEEN WHICH FLIGHTS WERE MADE, OR IF LOCAL FLIGHTS, STATE NATURE OF SUCH FLIGHTS. IF SERIOUS DAMAGE TO AIRCRAFT OCCURS, MAKE NOTATION UNDER REMARKS. CHAPTER 5 SEC. 57 DEPT. OF COMMERCE REGULATIONS.

FROM	TO	REMARKS
Madison	W. H.	Ferry
W. H.	Chicago	Ferry
Chicago		Left.
Chicago	W. H.	Ferry
W. H.	Chicago	Ferry
Chicago	W. H.	Ferry
W. H.	Chicago	Ferry
Chicago	St. Paul	Ferry
St. Paul	La Crosse	Ferry
La Crosse	St. Paul	Ferry
St. Paul	La Crosse	Ferry
La Crosse	St. Paul	Ferry

I CERTIFY THE ABOVE FLIGHTS WERE MADE.

SIGNATURE OF PILOT

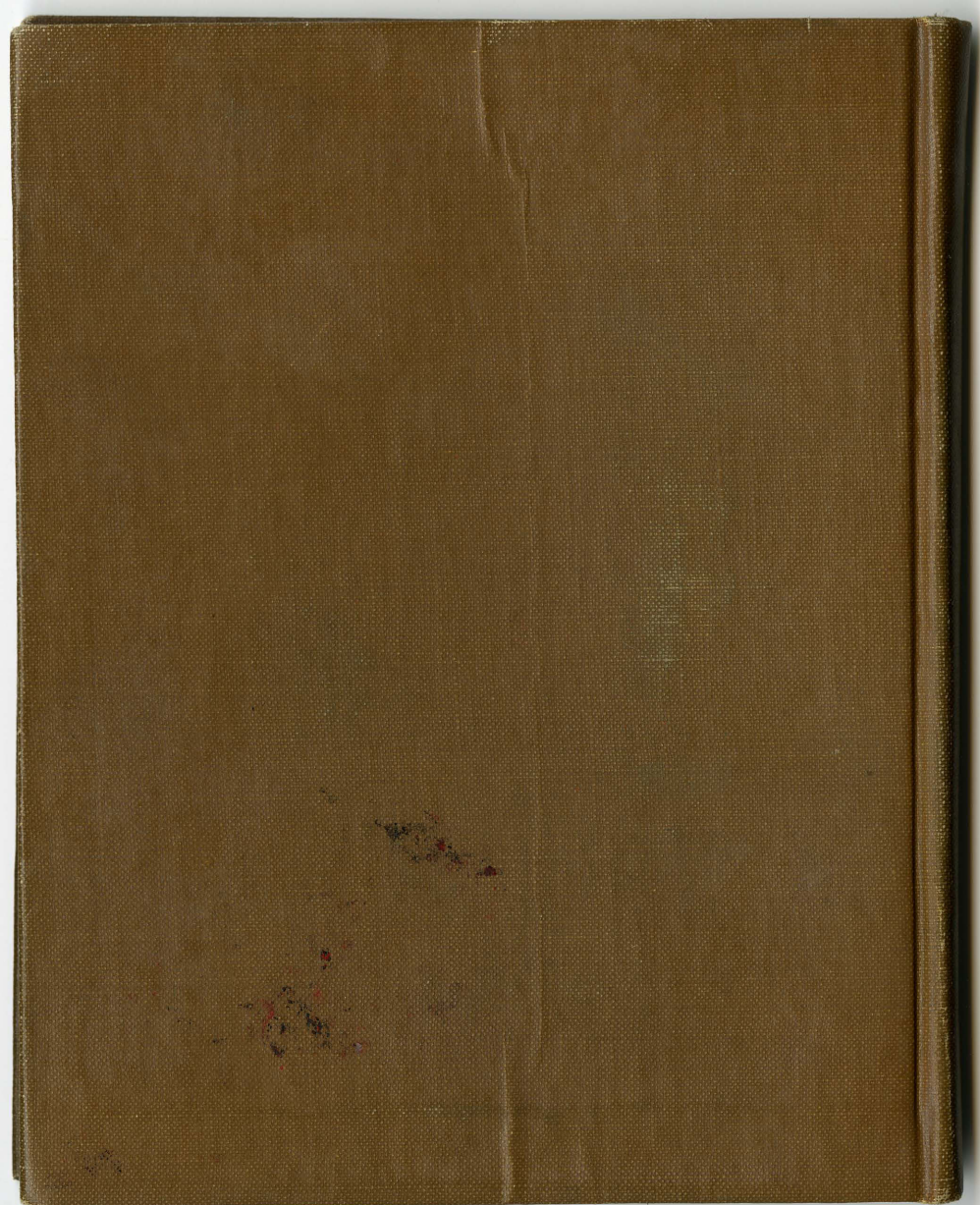
ATTESTED BY

Chas. W. Holman

DATE OF FLIGHT	AIRCRAFT AND ENGINE USED ON THESE FLIGHTS			DURATION OF FLIGHT	
	MAKE OR TYPE OF AIRCRAFT	IDENTIFICATION OR LICENSE NO.	MAKE OR TYPE OF ENGINE	HRS.	MIN.
				BROUGHT FORWARD	
				3905	38
5/2/31	Laird	NP. 7087	J. 6. 9.		35
5/3/31	"	"	"	3	50
5/7/31	"	"	"	1	00
5/8/31	Autogiro		J. 6. 9.	2	15
5/8/31	Laird	NP. 7087	J. 6. 9.	4	30
5/9/31	"	"	"		30
5/9/31	"	"	"	1	10
5/9/31	"	"	Engel	4	45
5/10	"	"		3920	18
5/10	"	"			
5/10					
5/16					
5/17					
TOTAL TIME TO BE CARRIED FORWARD					

STATE POINTS BETWEEN WHICH FLIGHTS WERE MADE, OR IF LOCAL FLIGHTS, STATE NATURE OF SUCH FLIGHTS. IF SERIOUS DAMAGE TO AIRCRAFT OCCURS, MAKE NOTATION UNDER REMARKS. CHAPTER 5 SEC. 57 DEPT. OF COMMERCE REGULATIONS.

FROM	TO	REMARKS
Milwaukee	Chicago	Ferry.
Chicago	Wash.	Ferry.
Wash. D.C.	Willow Grove, Minn.	Ferry.
Willow Grove, Minn.		Proctor.
Willow Grove, Minn.	Chicago	Ferry.
Chicago	Milwaukee	Ferry.
Milwaukee	La Crosse	Ferry.
La Crosse	St. Paul	Ferry.
St. Paul	Duluth	Ferry.
Duluth	Wisc. Rpts	"
Wisc. Rpts.	Willow	"
Willow	St. Paul	"
St. Paul	Omaha	"
I CERTIFY THE ABOVE FLIGHTS WERE MADE.		Chas. W. Holman.
ATTESTED BY		SIGNATURE OF PILOT





From the collections of the Minnesota Historical Society: Charles W. Holman Papers.

Copyright in this digital version belongs to the Minnesota Historical Society, and its content may not be copied without the copyright holder's express written permission. Users may print, download, link to, or email content, however, for individual use.

To request permission for commercial or educational use, please contact the Minnesota Historical Society.

www.mnhs.org