



Maud Hart and Delos Wheeler  
Lovelace Family Papers.

**Copyright Notice:**

This material may be protected by copyright law (U.S. Code, Title 17). Researchers are liable for any infringement. For more information, visit [www.mnhs.org/copyright](http://www.mnhs.org/copyright).



























Indian Point

Monday

March 16<sup>th</sup> - 1930



E 1









drive way goes  
along this side  
which is the  
entrance to the  
kitcheny.

K 053





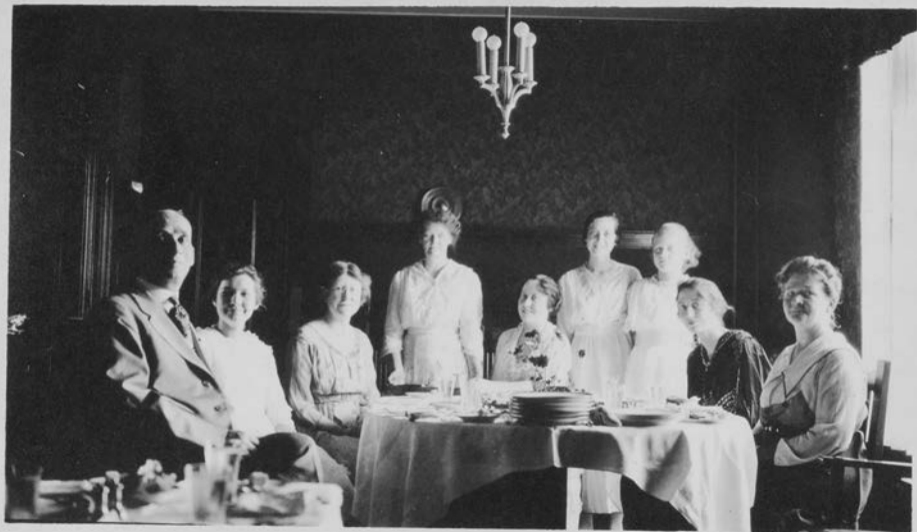




Jan 1977

66





last than 150

20

























































