



Maud Hart and Delos Wheeler
Lovelace Family Papers.

Copyright Notice:

This material may be protected by copyright law (U.S. Code, Title 17). Researchers are liable for any infringement. For more information, visit www.mnhs.org/copyright.



Hotel Del Coronado ca. 1890, Headquarters for the November Romería.
From the Society's collection.

NOVEMBER ROMERÍA

AS ANNOUNCED on the reservation forms which all members have now received, the November Romería will be a trip straight back to our beginnings. However, when our overnight destination is reached, Romería travelers will enter a later but no less fascinating world of the past—the California boom of the Eighties and the Opulent Nineties, as wonderfully realized and lovingly preserved in the magnificent Hotel Del Coronado.

The hotel opened on February 19, 1888, but by that time a reaction had set in to the boom of the 80s and the original developers were hard hit. A bit of fortuitous foul weather, however, saved the vast enterprise—for a storm forced the yacht *Lurline* to anchor off Coronado Beach. Yachtsmen John D. and Adolph Spreckels of San Francisco walked ashore and John D., impressed by what he saw, loaned Mr. E. S. Babcock \$100,000 to keep the hotel in operation. Later John D. Spreckels purchased the hotel outright and lavishly augmented the furnishings. Since that day the hotel has passed through the hands of many owners—and while the exterior remained essentially unaltered, the interior gradually became a heterogeneous jumble of colors and periods, and

Membership Campaign

LATER THIS MONTH each member will receive a letter setting forth in detail the importance of the current campaign and the ways in which each member can lend his support. Again each member is asked to enroll a new member, for this personal approach by one already interested in our state heritage is the surest means of attracting and securing new members.

attempted modernization. In 1960 the Del Coronado was obtained by the Alessio brothers of San Diego who have restored the vast structure to its Victorian grandeur. Travelers will discover French Victorian carpeting underfoot, brilliant hand-printed wallpapers, and custom-made crystal chandeliers which successfully recapture the grandeur of the past when it was proclaimed "The finest all the year round seaside resort in the world."

Our excursions into California's past will be guided by distinguished scholars, educators and authors. Highlights of the tour (given in detail in your reservation form) are as follows:

Saturday, November 11

- 11:00 a.m. Arrive Pala. A walking tour of Pala Asistencia conducted by Verona Fathers Dino de Grandis, Pastor, and Francis Didoni, Assistant Pastor.
- 1:30 p.m. Arrive San Pascual. Dr. Werner Marti, author of *Messenger of Destiny*, will speak on San Pascual.
- 3:00 p.m. Arrive Mission San Diego de Alcalá.
- 8:00 p.m. Banquet in Coronet Room of Hotel Del Coronado. Principal speaker will be CHS Vice-President Dwight L. Clarke, who will speak on *Kearny: Soldier of the West*, the title of his recently published biography of Kearny.

Sunday, November 12

- 10:00 a.m. An hour's walking tour of San Diego OLD TOWN. Jerry McMullen, Director of the San Diego Historical Society, will be our host and will receive us at the Junipero Serra Historical Museum.
- 3:45 p.m. Arrive Dana Point. Dr. John H. Kemble, Professor of History, Claremont College, and author of *San Francisco Bay*, will discuss its historical significance.

NOVEMBER MEMBERS' MEETING

SOME MONTHS AGO, sitting in the golden ambiance of the Sheraton-Palace Hotel Garden Court, Millie Robbins, the well-known columnist of the San Francisco Chronicle, exclaimed to our Director, "But why a Tudor Room? There could be a Tudor Room in Duluth. Why not a Ralston Room?" Mrs. Robbins was referring to the elaborate new dining facilities that had just been installed on the site of the Palace Corner and for some reason endowed with a colorful but not very relevant decor suggestive of the English dynasty. It was her thought that some aspect of our own colorful past should have set the keynote for the room. Eventually with the help of Director Biggs these thoughts reached the management of the hotel who in turn conferred with Dr. Shumate, Chairman of our Program Committee. As a result, at our Members' Meeting, November 30, the Society, together with the management of the Sheraton-Palace Hotel, will dedicate the new "Ralston Room." The speaker for the luncheon will be Neill C. Wilson, author of *Treasure Express: Epic Days of the Wells Fargo and Southern Pacific, the Roaring Story of a Fighting Railroad*, currently at work on the history of the Bank of California and eminently qualified to speak on the career of William Chapman Ralston.

The old Palace Hotel whose memories will be rekindled in the newly created room was built in 1875 by Ralston. It was the perfect symbol of one of the most remarkable eras in American history and a fitting monument to its colorful and expansive creator. Built at the time when Nevada's silver mines were pouring millions of dollars each month into San Francisco, it typified the color and grandiose extravagance of the whole bonanza period. Containing eight hundred rooms and occupying a site of more than two acres, the Palace was the largest hotel of its time and the most luxurious. Through its marble-paved public rooms and its immense grand court passed all the great, the near-great and the merely flamboyant personalities of the time. Here dallied Senator Sharon and Sarah Althea Hill; Lizzie Hitchcock Coit romped through the corridors; Grant, Sheridan, and Sherman were feasted in the banquet halls and the Friday Night Cotillion

Club performed sedate waltzes in the grand ballroom. The echo of this resplendent past will live again in the elegant new Ralston Room. All members are urged to attend the dedication luncheon and the special wreath-laying ceremony at 11:30 a.m. at the Ralston monument on the Marina green which precedes the luncheon.

Those planning to attend should send their reservations, accompanied by check, to the California Historical Society, 2090 Jackson Street, San Francisco 9, before Tuesday, November 28. The special price for this luncheon, including tax and tip, is \$4.00.



The Haraszthy Winery ca. 1865. From the Society's collection.

CANDLELIGHT AND WINE

IN 1861 CALIFORNIA LEGISLATORS authorized the Governor of the then eleven-year-old State to appoint a commission "to promote the improvement and culture of the grape vine in California." The chief result of the work of that commission was an extensive European tour by Count Agoston Haraszthy, an aristocratic Hungarian immigrant. Count Haraszthy shipped home to California 100,000 cuttings of over 300 choice wine grape varieties. Descendants of these 1861 vines still produce fine California wines. Thus 1961 marks the 100th anniversary of the founding of the modern California wine industry.

To celebrate the centenary our Society, in cooperation with the California Wine Institute, is sponsoring a Wine Tasting Benefit to be held at the Mansion from 5 to 7 p.m. Wednesday, December 6. Through the agencies of the Institute a distinguished array of California Wines will be offered and the Wine Advisory Board will supervise the correct serving of these prime selections. Special hors d'oeuvres will be prepared to complement the wines.

Mrs. Robert Van Vleck Anderson, chairman of the event, states that candlelight and wine will be the theme of the event and that it is her intention to recreate the grace and charm of the turn of the century in the appropriate period interiors of our Mansion, a perfect setting for a discriminating and cultivated appreciation of the fruit of the vine.

Through the generous cooperation of the Institute all proceeds will be allocated to our

Society's Mansion Fund. A special exhibition of historical material on the California wine industry will be on display.

Those planning to attend the *Wine Tasting Benefit* should make reservations accompanied by check with the Society, 2090 Jackson Street, San Francisco 9, before Monday, December 4. The contribution for the Benefit is \$3.50.

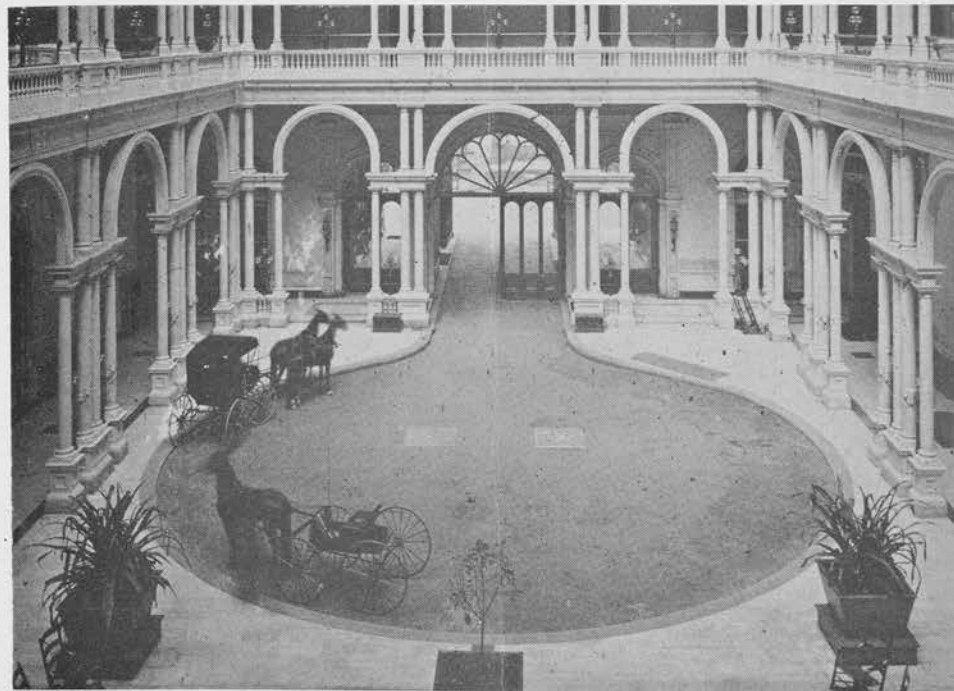
CALENDAR

Saturday-Sunday, November 11-12	Southern California <i>Romeria</i> . To Pala—San Pascual—Coronado—San Diego—Dana Point.
Thursday, November 30—11:30 a.m.	Wreath laying at Ralston Monument—Marina Green.
—12:15 p.m.	Monthly Members' Meeting. Formal dedication of Ralston Room at Sheraton-Palace Hotel, San Francisco.
Wednesday, December 6, 5 to 7 p.m.	Wine Tasting Benefit. The Mansion. Commemorating 100 years of Viticulture in California.
Monday, February 12, 1962	Annual Open House. The Mansion.
Friday-Sunday, April 13-15, 1962	Spring <i>Romeria</i> .

HISTORY NEWS

SAN FRANCISCO A small group of lawyers headed by CHS member Gardiner Johnson and Chester F. Gannon set out to collect funds to erect a special marker to replace the simple headstone on the grave of a renowned San Francisco lawyer, sol-

dier, and orator, Col. Edward D. Baker. The fund-raising campaign was launched on the 100th anniversary of the Colonel's death on a Civil War battlefield. Baker, a friend of Lincoln and United States Senator from Oregon, left the Senate to raise a regiment in the Civil War and fell in his



The court of the Palace Hotel ca. 1880. From the Society's collection. "The echo of this resplendent past will live again in the Ralston Room."

first charge at the Battle of Ball's Bluff. Our Society has been instrumental in perpetuating the memory of the illustrious Colonel. His career was the subject of the October 1958 members' meeting, at which time an excellent likeness of Col. Baker from our collection appeared in these pages. On October 26, 1960, CHS sponsored the observance of the centennial of his famous American Theater speech which served to insure the allegiance of California to the Union and consolidate presidential victory for Lincoln. The impact of Baker on his times was again reviewed at the dedication, May 31, 1961, of the California Historic Landmark Plaque marking the site of the Laurel Hill Cemetery where he was buried.

CALIFORNIA SONS Delegates representing more than 150 parlors of the Native Sons of the Golden West gathered at the Jack Tar Hotel, San Francisco, on October 21 to chart a new expansion program for the organization.

SONOMA A bus tour of Sonoma County historical landmarks was held Saturday, October 21, by the Alameda County Historical Society. The tour included a visit to Lachryma Montis, the General Vallejo Home State Monument, under the guidance of Raoul Emparan, grandson of the General.

SAN FRANCISCO The Richard Gleason Library of the University of San Francisco is sponsoring a Father Kino commemoration on Sunday, November 19, at 3 p.m. Dr. John Carroll, Professor of History at the University of Arizona and editor of the historical quarterly "Arizona and the West," will be the featured speaker. This event commemorates the 250th anniversary of the death of Father Kino, the famous Jesuit missionary and explorer of Sonora and Arizona.

MARE ISLAND A first day cover of the Naval Aviation Anniversary Stamp is included with the October issue of the Solano County Historical Society "Note Book." These covers were specially engrossed by the society to commemorate the vital part that Mare Island played in the birth of Naval Aviation.

SAN FRANCISCO On the invitation of the San Francisco Redevelopment Agency

that CHS recommend appropriate names for the streets, buildings, and plazas in the Golden Gateway Project, President Farquhar named the following Committee: Henry C. Carlisle, Chairman; Warren R. Howell, Vice-Chairman; Alex L. Arguello, Donald C. Biggs, Mrs. Ruth Waldo Newhall, Col. Fred B. Rogers, C. Albert Shumate, M.D., and Miss Irene Simpson.

BELMONT The Sisters of Notre Dame de Namur of the College of Notre Dame cordially invite CHS members to a Champagne Reception on the occasion of the opening of the restored ballroom in the historic Ralston Mansion, Belmont, California, Saturday afternoon, November 11, 5 to 8 o'clock. Donation \$5.00 for two persons, \$3.00 for one person.

ENDOWMENT FUND

MOST HISTORICAL AGENCIES which have been privately supported for as long as the California Historical Society have attracted substantial bequests and other major gifts for endowment to be held in their trust funds. The California Historical Society has not been so blest, no doubt partly as a result of members' oversight and also because of our inactive years, 1906-1922. To make the Society independent and to provide the financial security necessary to hold the present staff and compete with other institutions for the best people available in the field, it will be greatly appreciated if members will consider both major bequests and smaller contributions to our Endowment Fund. Such gifts are welcome at any time and in any amount. They are, of course, deductible for federal and state tax purposes.

BOOK OF REMEMBRANCE

THE SOCIETY'S BOOK of Remembrance was instituted several years ago, and it has become more and more frequent for monetary gifts to be given by members or friends in memory of deceased members or others interested in California history. The names of the deceased are inscribed in the book by a master calligrapher, and the handsomely bound volume is always on display at the Society. Usually such memorial gifts are made at the time of death in lieu of flowers, and an appropriate card is sent to the family by the So-

ciety. Gifts may, however, be given at any time, and some pioneers have been so commemorated.

A memorial list is also published in each issue of the *Quarterly*. Below are additional names which have been inscribed in the book but which have not as yet appeared in the *Quarterly*.

- Roderic T. Antrim
- Elise Pierson Buckingham
- Edward Cahill
- Sara Hathaway Dakin
- Clarisse Lohse Ghirardelli
- Mabel Ray Gillis
- Louis E. Goodman
- Joseph R. Knowland, Jr.
- Frank Sutter Link
- Herbert E. Olney
- Elizabeth Miller Onstott
- Inez Henderson Pond
- Mildred Mallon Prince
- Jerome Richardson
- Katharine Richardson

TRUSTEE NOMINATIONS

A NOMINATING COMMITTEE, composed of Hobart Lovett, Chairman; Henry Miller Bowles and Porter Sesnon, has been ap-

pointed by President Farquhar to nominate five trustees for election at the annual meeting in January 1962. The terms of the following trustees expire in January: Brantley M. Eubanks, Piedmont; Mrs. Gerald D. Kennedy, Stockton; Hon. Joseph R. Knowland, Oakland; A. T. Leonard, Jr., M.D., San Francisco; and Albert Shumate, M.D., San Francisco. The Committee has renominated the above slate.

The Nominating Committee has nominated the above in accordance with the Society by-laws, which became effective January 1, 1958, quoted as follows:

ARTICLE III

Board of Trustees

1. The governing authority of this Society shall be vested in a Board of Trustees, consisting of twenty-five corporate members, five of whom shall be elected each year for a term of five years and until their successors are elected. No Trustee shall be elected to more than two terms in succession.

Additional nominations may be made over the signatures of at least 25 members, to be received by the Secretary not later than one month before the annual meeting.



WELCOME TO NEW MEMBERS

<i>Sustaining</i>	<i>Address</i>	<i>Proposed by</i>
Val Adams	San Francisco	Donald C. Biggs
Mrs. John Cooper	Maui, Hawaii	Edwin Harbach
Mrs. William D. Stevens	New York	James de T. Abajian
Mrs. N. W. Jacques, San Mateo, has raised her status from Active to Sustaining.		
<i>Active</i>	<i>Address</i>	<i>Proposed by</i>
Mrs. John E. Bonwell	Hayward	Lois Bastian
Mrs. Edward Cahill	San Francisco	Membership Committee
Citrus College Library	Azusa	Manuel P. Servin
Mrs. Rodney F. Coltact	San Mateo	Mrs. Henry Eastling
Miss Anita L. Crawford	Berkeley	Membership Committee
Robert G. Dennis	Albany	Grace Nelson
Herbert L. Faulkner	Oakland	Irene Stewart
Mrs. Helen Foss	Palo Alto	Irene Stewart
Glendale Public Library	Glendale	Membership Committee
Miss Elizabeth Lee Gruener	Paramount	Membership Committee
Peter R. Harbach	Berkeley	Edwin Harbach
Paul J. Herlihy	San Francisco	Mrs. Arthur M. Schoenfeldt
J. J. Hillard	San Leandro	Irene Stewart
L. J. Jacobsen, M.D.	San Francisco	D. Hanson Grubb
Mrs. Sue Stewart Kalua	Menlo Park	Irene Stewart
Mrs. Hulda McGinn	San Francisco	Bettie Ashe Meares
Mrs. Harold R. McKinnon	San Francisco	Francis P. Farquhar
Robert D. Madsen	Piedmont	Membership Committee
Mrs. Marcia Masters	San Francisco	Membership Committee
Miss Grace Merchant	San Francisco	Irene Stewart
William C. Mortby	San Francisco	Membership Committee
Don Mulford	San Francisco	George L. Harding
John Q. Owsley, Jr., M.D.	Belmont	Membership Committee
Mrs. Herbert Plath	San Francisco	Membership Committee
William E. Puffer	San Francisco	Mrs. Hugh Brown
Glenn Smith	San Mateo	Membership Committee
Miss Myra I. Straightif	Kensington	Membership Committee
Sunnyvale Public Library	Sunnyvale	Membership Committee
Mrs. Eleanor W. Tilden	Woodside	Heber V. Tilden
Miss Gretchen Wulfinf	Berkeley	Miss Helen J. Mitchell
<i>Student</i>	<i>Address</i>	<i>Proposed by</i>
John Carl Graham	Alameda	Edward T. Planer
Larry Sagouspe	Ontario	Donald Bartell
Thomas Walsh	San Francisco	Membership Committee

STAFF OF THE SOCIETY

- DONALD C. BIGGS, *Director*
- JAMES DE T. ABAJIAN, *Librarian*
- MADLINE ALVERSON, *Assistant to the Librarian*
- TERESSA FRYWORTH, *Assistant to the Director*
- JANET MCNAIR, *Staff Assistant*
- MR. AND MRS. BOLES LAV ROUDSKY, *Custodians*
- MANUEL P. SERVIN, *Editor*
- IRENE STEWART, *Business Manager*
- MAUDE K. SWINGLE, *Editorial Assistant*
- WILLIAM W. WHITNEY, *Public Information*

CALIFORNIA HISTORICAL SOCIETY
2090 JACKSON STREET, SAN FRANCISCO 9, CALIFORNIA

Non-Profit
Organization
U. S. POSTAGE
PAID
San Francisco, Calif.
Permit No. 4563

Mrs. Maud Hart Lovelace
774 W. Eighth St.
Claremont, Calif.

RETURN POSTAGE GUARANTEED
Form 3547 Requested

The California Historical Society is a non-profit, state-wide organization, supported solely by membership dues and contributions. There are no genealogical or residence requirements. Headquarters are at 2090 Jackson Street, San Francisco 9 (Phone JORDAN 7-1848). The Library and Exhibit rooms are open Tuesday through Saturday from 10 a.m. to 4 p.m. Business offices are open Monday through Friday from 9 a.m. to 5 p.m. The building may be reached by the Leavenworth bus No. 80 outbound from Mason and Market Streets. Southern California Headquarters are at EL ALISAL, 200 East Avenue 43, Los Angeles 31.

INVITATION TO MEMBERSHIP

CALIFORNIA HISTORICAL SOCIETY

Date _____

To the Director:

Please report my name as a

}	patron	}	member of the California Historical Society
	sustaining		
	active		

to the Board of Trustees at its next meeting.

Proponent (if any) Name _____

_____ Address _____

Enclosed is a check for \$ _____ in payment of dues for one year from this date.
Patron Membership: \$100 Sustaining Membership: \$25 Active Membership: \$15
Student-member application on request.

All dues, contributions, bequests are deductible under State and Federal tax provisions.

Notes on California pictures, 1910. Lots of this for California book.

This was winter of 1900 but many clothes date from spring of that year.

With a tan-grey suit, ankle length, I wore the famous grey furs and a big bee-hive hat of black velvet. Suit coat very long.

K S wore furs also and a wide brimmed black hat.

I wore same ring Merian is wearing now. PUT IT IN BOOK. My hair was pumped on the sides.

High collar and jabot on blouse. Long sleeves.

Venetian beads.

Grandma a black silk blouse, jabot, missing finger.

I wear a Peter Pan collar and Paisley tie in one picture.

A good picture of my graduation dress, elbow sleeves, ankle length, crushed satin belt. Embroidery and insertion. Use a magnifying glass to look at these pictures.

White coat trimmed with black. Hat with black and white wings.

Hideous.

My last spring's hat a yellowish straw brim turned up on side. I remember that it was trimmed with red poppies.

Leicester Sehan's suit coat was shorter. Perhaps they were coming in shorter.

Mrs Andrews, Mrs Baird in beehive hats. This was probably a Fall 1910 fashion.

My evening hat was big, set at a slant, pale blue plume.

The plaid gingham dress is high collared and long sleeves. There is a good picture of it here.

My new, 1911 suit is shorter coated.

Alice's big hat is covered with daisies.

Elbow sleeves and round neck on my pale blue Glass Day dress.

Speak.

"Miss Erickson asked me to give you this note."

"Miss Erickson wrote me a note?" Miss Bangeter sounded puzzled. Obviously she could not understand why Betsy was so perturbed.

"She didn't write it," Betsy said. "I did. I wrote it to Tacy or rather ... " she paused. "Miss Erickson asked me to tell you the full circumstances, so I'll have to go a little farther back. I asked to speak to Tacy during class and Miss Erickson wouldn't let me."

"Was it about a personal matter?" Miss Bangeter asked judicially.

"Yes," said Betsy. "I couldn't speak to Tacy so I wrote her a note, and Miss Erickson saw me passing it and asked me to bring it to the front and read it out loud. So I did." Betsy gulped. "She told me to bring it to you."

Miss Bangeter accepted the folded paper and laid it aside. She leaned forward, crossing her arms on the desk, looking into Betsy's face with keen, grave eyes. She spoke in a tone of dignified intimacy.

"Just what do you think of all this, Betsy?"

"I think I acted very foolishly, but I think, too ... " Betsy's tone grew resentful, and she paused.

"I know," said Miss Bangeter, "you think that Miss Erickson shouldn't have read your note. But you must take into consideration that she is a young, inexperienced teacher.

Col.

3

much frank

~~Sole~~ Type

Beauty & stark

Quiet not too

many notes

~~Grand~~ houses' WW

first sale

Back to Univ. "Her

story" — including

~~except~~

Rec S
581.9

Higgins, Ethel Bailey
Plants of the Foothills
& mts. of San Diego
County.
1955

REC
S

Starkey, Mrs M. C.

A Mountain Sandalwood

1928

REC
917. 949

Lindley W

Calif. & the South

~~San Diego to Julian~~
~~mail line.~~

BE 25833

Mrs Andrews

Repeat Holmes
LA - Repeat
Com. burner also
1058 22 st.

BEH 3-7112

^{Who Who}
Charles Nathaniel Andrews,
Winamac Wis.

married Betty S. Johnson

1939, no children

married Henry F Baldwin

1881 - Alice M. Lois

MCKEE, Robert B +

Helmus W.

married 1935

1058 22nd St.

a History of St Pauls Church

San Diego, a Cal.
City. FPA

Louis F Giddes was
authority on Span.

+ Mexican San D.

Fishing ind. operated
by Port. & Italian
oldest industry

Old Town at N. End

seldom jam in
streets. Large pro-
portion of elderly
retired persons
that block added
literally above -
place.

Broadway main
avenue - near 25th

One of the first
exclusive residential
districts, Golden
Hill, keeps the
park's S.E. corner
an area of wide
pleasant streets
with many shrubs
standing water ~~at~~
in front of big
wooden houses
set back in well
kept lawns.
S of Broadway only
4 mi - 5 mi

SD dress T
luis for airport
Dora at day

please
Sam - unfrate
tourists

City - tired people

wander along

facts Bellor
Park, lister ^{Edgar}

a very good book

Point Loma - La
Playa Part. colony.

Golden Hill, most
antiseptic + highly
improved area of
S. D.

California of the
South

~~and~~ Lindley &

Widney

REC

917. 949

Very good

maybe Harold
Laird.

San Diego yesterday

D a R

RECS 979,498

LEUA B HURRYICK
one of untr

RCC

S

920

Wto's wto in San Diego
1936

ReC

S

917.9498

San Diego, a Calif.
City.
Federal Water Project
1937

San Diego HS.

The Rust

S D High School 1910

mag. F. E. Jensen

Ed in chief

Andrew football LTB

picg Helmer

also in track

1000 jump 2nd

shot put 2nd.

Helmer Weddel
Andress.

alta meg Lit Soc.

Sand Chen
art Ed The Rev

Capt Toal
Football
Club.

Marjorie Evans
Er Zumpf.

Boam Soc

grandchildren
art club
The Rev

Recess 81.9 Higgins
Trails.

Plants of foothills
+ MTS

Some ^{SE} Native Trees
+ Chaparral

↓ Pines, Willows

Sycamores etc. DE

helpful

Rec San Diego yesterdays
S
979.
498

Number of incidents
of past.

1921

REC
S
379.7

A History of
San Diego High School

1882 - 1932

by Quill and Scroll

REC
S
379.7

San Diego High School

Annals

1910

RCCS
582

Higgins, Etel Bailey

Chaparral

1951

RCCS
582

Higgins, Etel Bailey

Native Trees &

San Diego County

California

There is, however, among those stories one which has ~~fair~~ intimations ~~of~~ of the future. It is about a pair of little girls named Betty and Bick. They are climbing ~~the~~ ^a Big Hill in search of a hermit they have heard ~~about~~ is living in one of the ravines.

It ~~was~~ never sold; none of my stories had sold as yet, although they were being offered freely to editors of all types ~~of~~ of magazines. Daddy claimed that ~~the~~ the government should issue round trip postage stamps to accomodate authors ~~like~~ like me.

Some ~~of~~ ^{soon} were ~~seen~~ to sell/ but I am thankful I never sold this one. It wasn't time yet to write the Betsy-tacy stories. Merian ~~who~~ ^{xxxxxx} ~~inspired~~ ^{did so much for them} they needed Merian who would not be born ~~for~~ ^{more than} twenty years. Their style ~~was~~ ^{alreadt} certainly/jingling in my head though. ~~Doesn't this~~ ~~from~~ ~~the~~

~~Hermit story~~ ~~is~~ ~~so~~ ~~much~~ ~~familiar~~

~~Listen you Betsy-tacy readers~~

Betty suggests that they can talk to the hermit about what has been happening in the world.

Pass on to Betty Tacy club

"What has been happening?" Bick asked, perplexed.
"Oh, lots of things. You know they have horseless carriages now."
"I know," said Bick. "I never saw one, though. I wish I could."
Don't you?"
"Don't I!" said Betty with emphasis. "Just imagine! They run around all by themselves and know how to pass horses and turn corners and everything. When I grow up I'm going to have one."
Bick looked envious. "Will you take me riding?" she asked.
"Of course I wilk....We'll go riding all day, just ~~stopping~~ to eat. We 'll be lovely ladies then with long white lace dresses and plumed hats and we'll say 'indeed.'"

~~Doesn't this~~ ~~from~~ ~~the~~

Sound familiar?

Perhaps this should be saved for next section!
It was typed but not written in California.

Cal and - San Mateo Point
Aubrey Young - Harper Bros, 1935.

Old Baldy (not sure
authorities) represent
summits of the Sierra
Madre. Over to the E &
SE, beyond Cajon pass,
towers & ranges were
higher, the San Bernardino
mts.

—
Tall Sierra Mountains / many
undrains at the Sierra Madre
mts.

-III-

Cal writes: Best parts

Mark Twain

Roughing it

Jumping Frog

H. H. Henshaw

Remora + Cal Travel

Frank - 2 yds by sketcher
the the Mast. ✓

G. A. Steiner

The Splendid Idle 405
also a History of Cal.

F. Harris

The Art of Paper
(San Joaquin
Valley)

McTraeger

#2. Valley of the Moon.

A. L. Howard

The Silverado Squatters
The Wreck

Chas. Warren Stoddard

S. Sea Sayles

on the Front Page of the
Pages.

Harriet Jackson's novels.

Ambrose Bierce.

John Muir.

See his writings.

Mary Austin. The Land & Little
Rain.

John Van Dyke
class. Lumber

Geo. Lehman Jones
class Francis Saunders
I Smeeth class

Zane Fry

H. D. Wright
of the desert

Seward Edward White.

Charles King

mountain territory in the

Sierra Nevada

a classic

The Port of the Sierras - Traquair

Miller

Songs of the Sierras.

du Columbus

Sailor, Sailor.

Elvin Markham.

George S. King. Verse

Robinson Jeffers - Beau Stallion

Edward Rowland Sill
and Corliss
success
sings

Henry George
Social Science, Philosopher
History of Cal.

Hubert Howe Bancroft
historian

Herbert Bolton - present
Day, anniversary.

Chas Caldwell Dotie
a good worker - SF
good stories -

James Hopper.

Lincoln Stephens.

Will + Wallace Irons.

Young Kipling - in California

Henrik Sienkiewicz
Santiago Canyon

artists listed

P 30 -

alber Bierstadt, most of
Yosemite.

Helena Modjeska, an
actress in Sf. - to Cal. with
the polish colony to which

Sienkiewicz belonged

the Stevenson country above Calistoga.


- 4 - P 32 +

San Diego & the S. W. Coast

P 63 - Modjeska. The forest of
Arizona.

Eschscholus -
wild lilac
thorny - fragrant

SD - harbor betw. Lusty Point
Luna + Ino - by up North Is.
nearest city in US to Panama
Canal.

1542 - bay disc. by 
Juan Rodriguez Cabello
who called it San
Bernard -

Sebastian Jiscaino
60 yrs later, named it
San Diego de Alcalá
not after St James, the
apostle

but St Diego a holy
Franciscan of the
15th century who
died at Alcalá
de Henares, in New
Castile.

no settlement until
arrived by sea of
~~at~~ a diversion of the
Portola Exped from
Mexico - Apr 11, 1769!

1769
1542

227
yrs.

An encampment way
laid out within a
stockade on a hill
in what is now
called Old Town, &
July 16, Padre Serra
founded a mission.

2 1867 - Alvaro Horton
Panama Pacific Exposition
here, 1915, 16 & eventually 17

another in 1935

with exposition in Balboa
Park.

Statue of El Cid.

Spreckles organ

P36 - Golden Hill

Old Town - earliest permanent
settlement; European on
our Pacific Coast.

most renowned in
Cuba here is
Romana's mad. Place
the Estruill's house.
facing the little plaza
on the S.

1825

Little Parish church nearby

Date Palm planted by
Serra in 1769.

Padre Serra museum
site of San. Vie. & Cosoy,
here, first settlement
where was mad.

San mission Plaza
San Gabriel.

mission up S. O. River 1774
El Camino Real

1775 - deep

Padre Jayme, the martyr.
Sseed church det by earth quake
1803.

For years only the facade &
base of the bell tower & a few
ruined wall S.

In 1931 the mission
was restored or rather
a practically new
structure.

—
opp church, adjacent - old
olive orchard.

—
an underground passage.

Point Los Theosophists
some calls, Tringley.

old light house crest
(18 51)

Calhoun's monument planned
here.

his first landing pl.
probably Ballast Point
another likely harbor

opp shore from Encinitas

the Coronado St.

Site signed by Calhoun 1542
60 years later visited by
Viscaino.

named for

Francisco Vasquez & Coronado

Remained for his march into
the heart of our continent
in search of the
cities of Cibola,
318 - in Mexican
water - about 7 mi.
from the Silver Strand.
copy Dec. 44

clipper ship Bishop wreck
p45

W of Cerro de los - The Last ss.

mt Helix

grass mount

El Cajon

alpine

Some fossils of live oaks - p46

El Centro

Santa Ysabel + Indian bones of
nether or the mud chapel

1903 - evidence of Indian for
Werner Ranch.

Notes for various chapters ~~from~~ from tape recorder

The Palmers were incontestable a romantic lot, ~~brimming with~~ tall, thin, temperamental, brimming with music and high spirits.... or brimming with music, temperament, and high spirits. They were made more romantic, perhaps, by the fact that tuberculosisconsumption, as it was called then... had run through that family stopping only with the present generation. It was ravaged the preceding generations. Father, mother, sisters brothers had all been swept away from my Grandfather Solomon Palmer and he himself contracted the malady, along with losing one? two? fingers, in the Civil War.

The most romantic figure of all, I am sure, was Aunt Maria Palmer, a red headed beauty who died when she was seventeen. The old account book is full of her poetry, much of it concerned with ~~her~~ her approaching death and ~~her~~ legend brings her down to us having been beautiful and deeply religious as well as talented. or beautiful, red headed of course, fragile, willowy, deeply religious as well as talented.

Grandpa Austin, I would say, detested all the Palmers. He may have been jealous of my Grandmother's happy memory of her marriage with Solomon. He certainly found his step children a thorn in the flesh, and even managed to dislike my father...for being married to a Palmer. He ~~was~~ ^{was} dubious of Kathleen for, although she was not red headed ~~she~~ and really looked like my father's pretty sisters, she had the Palmer temperament and was in fact a Palmer to the core. Helen was only a baby when they moved away but he did, ~~to~~ to everyone's surprise, ~~she~~. ~~Grandpa~~ seemed to tolerate me, he really rather liked me. Of course no one could look ~~less~~ less Palmerish than I, with my straight hair and apple cheeks; besides, I remember that ^{and} I rather liked him and I loved to visit their place at the lake.

One day, after their move to California, Grandma told me, Grandpa started talking about me. He praised me, she said, to the skies, ~~and~~ but suddenly stopped in embarrassment, realizing that he had been praising one of the detested Palmer blood. He said in a change of tone. "I really can't imagine who Maudie takes after. It must be she goes

peckish purple
fried matter

Dad went with copperpot

Uncle Ed's room (Klan
Europe) pic '9

Mrs. Aunt's
Uncle

my face full of
h.s. pic's

Heath + Lamin

Du - C...
a f for banner

Helen's sober little face
one or two smiles

How it's done
Europe games
how you boys!!!

a proud 4p 2 year
up in power

my wife's in \$
etc. Canon

(Addy)

my kitchen
my room - for pic's

range - pic from Mrs. A.
in family desk - Kate in
in the table Play Cash

James was a wall
K - maplet

Walt - K - maplet
Grandpa - Geo. 100

Dec 19
1908

George Austin

Mus has some other
books - help with
cashier club - or start -
at winter - 1908

Parents - 1908
IT's 1/2 the time
1909

1910

Samson under 1910
Road "one way" - 1910

old school
but "water" system
arrived in 1910

Brady Penultima
with "District"

May 5 - 10
Brady - 10
When we were
1910

2 days
story - good
to much

Shawyer
Dexter
Callan

Lower drawer
of chest need
material,
especially
clippings
to be
picked up

Chapters

to arrange
2 California
3 2000
first trip to A.M.
writing 2
periods

Following chapters
in other
chest.

~~Flora's son, Jr. 2~~

~~"He was loved by the
son's family & we have lost
a dear friend" ... I am
blessed to have known dear
son's father & wife & not
forget him.~~

~~Edg. ...~~

~~He was always so kind & joyful.~~

~~Ph...~~

~~dependability, friendli-
ness & sincerity"~~

~~to know him & E~~

~~This had been a good
man. To know him was to
wish he was here like him~~

~~... ..~~

~~... ..
... ..
... ..
... ..~~

~~... .. a simple, direct, selfless
& utterly splendid soul.~~

~~... ..~~

~~... .. always gave so much~~

for Austin article.

Remember Matt's
letter, in bottle
number, about Lake
road.

on line along the lake
to the wooded pass -

Access -

2 days, the morning when
had gone together

using the lake.

and tiger-colored, strong smelling nasturtiums and always pansies, ^{for}
~~for~~ Papa liked a pansy in his buttonhole. And in front of the lattice,
^{south side of} on the ~~south wall of our~~ ^{the} ~~yellow~~ cottage were a lilac bush and some
yellow roses. ~~XXXXXXXXXXXX~~

^{That side} The south lawn had maples like my own. ^{Papa} Papa had planted them
when he and mother bought ^{the little} this little house, six weeks after I was born.
At that time, too, he had had a carpenter put a fancy curlecue into
the front gable. They were the fashion and Mother wanted one, and she got
~~it.~~ He had planted ivy around the small front porch which fitted into a
corner of the house. I liked that ivy. ~~In fact,~~ I wrote a Poem about it.

On the north, ^{a narrow} ~~our~~ lawn sloped sharply to the lawn of the
^{next} ~~next~~ house, and that pattern of lawn and terrace continued down the hill. ^{our house} ~~the hill.~~ ^{street}

~~Our house faced the west and~~ ^{our house} In front, beyond a tall butternut
tree, ~~which yielded delectable butternut cakes in season,~~ steps led down
to our hitching block and the road, and across the road lived my best
friend,.... Frances Kenney, nicknamed Bick. She had long soft auburn
ringlets, large blue eyes and a sensitive freckled face.

774 West 8th Street
Claremont, California
August 14, 1956.

Reservations Manager

El Patio Del Mar Motel
336 West Cabrillo Boulevard
Santa Barbara, California.

Dear Sir,-

Replying to your card of August 10, I am enclosing
check for \$24.00 to cover the first night's ~~lodging~~ lodging on
two double rooms for August 27 and 28.

You ask whether twin beds or double beds are
required. We should like one room to have twin beds and one to
have a double bed. We should also very much appreciate an ocean
view.

We will be ~~xxxxy~~ with you early on the 27th since
we are only coming down from Claremont.

Very truly,

Grandma taught
me to piece

Quilt ———

Mother had some of her
quilt to ——— piece to pick out
old dress ——— a main
activity.

Note in Sandra Palmer's Civil case letter.
"Did you get that song & sing you?
when you write, say, sometimes about
music." (It's fine but he could not play
the instrument)

Chile Vita & Community

up to p 39.

sage brush

along river bed, cottonwood

Spanish oaks & wehows

in valley scrub oak

live oak & mesquite

& in the mountains - pine

no yucca, no pepper,

Eucalyptus, lemon, dog

tree, tarantula. Land had

never been planted.

Spaniards did not come to stay until
1609.

picture of acorns, yucca, spade, prickly
pear, tule raft

Spanish part of Yuman group. Spaniards
named them Pisqueno.

Otats (Ps) lived at Chile Vita.

Gabriel 1542

Vicario 1602 - 60 years later.

Father Serra travelled in Chile Vita in 1769

Spaniards did not want - taught us of

how to use the land

Donos have learned about metals,
Cattle etc on grass in the
lands of Chula Vista
Spain brought fruit tree cuttings

from Spain - oranges, olives,
plums, apricots, grapes,

grew lettuce cabbage carrots
potatoes + onions.

1821 Mex freed self from Spain

April 1822 Mex flag raised over
Presidio at San Diego -

1822 Spanish Era closed.

Mexican Era 1822 - 1847?

hide trade in San Diego Bay - 1722, a

Boston ship

" " brought things had for hides

woolens, sugar goods, perfumes, other things

1813 Spain had passed a law that said all
missions over 10 years old should have
charters and not have the right to
control the life + work of the Indians.

But 1823 still 21 missions, Indians working

1829-34 Mex secularized missions, put

law in control of govt. The padre left.

many people sold - others left to start a ranch.

~~New~~ Chula Vista - Janel Ranch. Henry

rancho given them in 1880,
Stay Rancho.

last of 12 Mex gens was Pio Pico,
grand aunt of the rancher's wife
to ~~Antonio~~ Pio, Gov's sister.

Rancho de la Nación

Franklin spent little time there.

owner of Stay Rancho probably
lived in old town SD rather
than on the rancho.

1846 - U.S. at war with Mex.

Cal. Republic Bear flag & Sunna.

Then am flag, Cal., U.S.

1847 - last fight with Mexicans

1848 - gold at Sutter's mine.

1850 - Cal - 31st Sept, Sept 9

good map p 15.

Frank Kirtland a promoter of Cal. repin.

olive tree cuttings gathered from old
San O mission. He experimented with
fruit trees, figs, tangerines, citrus,
grapefruit apples, grapes etc.

Planted trees eucalyptus, a gum tree
from Australia via San Francisco.

H.M. Higgins & his Bonnie Brae grapes. These

can still be seen.
w/w whistling - "highland"
I.e. Frith's "Sunny Side"
1884 1st E Cooper Rancho Bonita
Entire party plant - 1894
called The Old Red Barn

Honey made money,
stage coach works Regional Ranch
a 2 horse - 2 seat stage
very good chapter on stage.

Dr. Huntall helped to buy a R.R.
a true site, S of Sweetwater River.

Train route was Chula Vista

1860 - 1888 Chula Vista is planned.
Cal W.C. Dickenson came to plan the town
up to that time part of Rancho de la Nación.
Bonita, nearly level land with a
view of the mt. to the east and view of
bay & ocean to the west.

Clear, dirt & 4 horse work.

Also hunt, wild flowers, shearing
cottonwood trees & large spreading
sugar trees. Sweetwater Dam 1886-88
1888 a r.r. to Chula Vista

train around S.P. Bay across strand
Colorado.

Chula V4 planned - 1886 - 88.

Road straight - (except of blocks

played ~~got~~ Col. R. Dickinson planned

Practical nearly level land, view
of mts to east & ocean to west,

many ~~flowers~~, much dirt, & 4 trees in
area. Beaut. wild flowers, shimmering
with color - wood trees, & large

spreading symmetrical trees in the
Sweetwater Valley. Also the view
to the level land.

First house large - basement, first floor
2nd floor, attic, granite space high
tower in top called a cupola. From
this tower could see Pt Loma, the strand,
bay, ocean & mts.

1886 - 88 belt crossed near electric light,
being used for st. lights in San Diego.

New San Diego belt, Sweetwater Dam.
Dam finished 1888. By end of 1888 a r.r.

Excursion from S.D. thru C.V. etc. to Tia Juana
& dam. back to San.

La Presa - a resort no longer there.

Another belt line from S.D. ran around the
bay & across the strand to Coronado.

Telephone lines, 1887.

1888 - 1894. Big boom over.

1891 - beginning of a library in CR
from Col Dickinson's books.

1894 Cam. Cong. chuch. clergy district
CR for 17 years. (up to 1894 chuch
services in top floor of school.)

A pier or wharf built on the Bay.

Plt ~~part~~ of E st in 1897 - used
until 1916. C. V. Yacht-club.

South Cove, a favorite place for
picnics. a general store, a
PO 1890, in " " .

8 1894 - 1911.

Fruit from CR had gained fame
far + wide.

Had trouble for lack of water. Ocean
near. Some water salty. 7 year drought
1897 - '04. (Then an aqueduct
brought water to area)

Men left for gold rush - 1896. Klondike
To Spain Am war. 1904 + 5 ^{rainfall} abundant.

1907 - street railway changed to
electric railway - my period.

Then proposed a bank. 1911 - first
city council. Chas H Austin
in it!

picture main st. Chula
vista 1911. Police - fire
dept. (in other words it
must have been a small
country - like town in 1910)

Campes Lig 1916

1911 - ^{minut.} pop had increased to
550 people. ~~had~~ just
started a rural route in
C.Y. Clarence E. Austin
first rural mail carrier.
at first mail on horseback
with the mail pouches in the
saddle bags hung on horse
box. Then a special buggy,
(wagon cart) which had US
mail painted on the sides.

Buggy looked like a ~~large~~
large packing box with
windows cut out of the sides.
The " " was there so he could
reach out & put mail into
the boxes by the side of the
road. As soon as he had money

Went to buy a model T
Ford, he did so.

1911 - 1st milk ch.

1913 CV Woman's Club.

1916 - Caley Raisin became
a major crop

also tomatoes, string beans,
ketchup, green peppers,
cabbage, cauliflower. But
most people 1911 - 1920 were

lemon ranchers. Fruit
seedling. Most had large ranches.

Rainy week. Jan 7, 1913, the
Big Freeze. After this was ready
with smoke pots or heaters to
keep cold away from the trees.

That year Sept 17, 1913, 1 heater &
holter to 110 degrees. Killed
young rabbits, chickens, & new
growth on trees which had just been
planted.

Insect pests.

1916 Ch. V. Citrus Ass.

World War I brought many service men.

CV families good to clean. Some
marriages resulted
1916 - 17 saw a big
flood. Sweetwater - Dam
much time. Sweetwater

+ Upper + Lower Otago
began to feel + water went
over the spillways with great
force. Rain d. that kept
+ at Dam 22 - dirt dam
on S + at Miller end of
Cinnabar Dam gave way +
sweetwater spilled and with
such force that it swept home,
man, bloop, & chest + animal
to the bay.

Lower Otago also.

CV isolated for a time. Water
storage. Residents of CV not in
many hundreds people.

and Days from valley state also

1920 - 30. Roaring Twenties:

8th grade good. Class 9 May. Evening.

1911 - 16 only school a big 2 story Bldg

in f. st. 4 class rooms - wash basin -

1930 - 40 depression

Under Chelsey, Canadian
1911 - 1914 (Thelma)

Mr Col Kranz, Principal
of Rice for 12 years.

He been a teacher for
33 years and

Principal for 17...
addressed Chule District
Community

came from a pioneer
family in Ch. Range. His
grandparents settled there in
1900

Vol 2. Chap 12. The Look Look
Back.



lunch, oranges, bars & cereals
olive trees, figs, guava, guinea
& tangarine trees

last 2 bedrooms in hip upstairs
front bedroom (Maj + Chelsey)

Xtian Endeavour + SS Parties

Played Run Sheep Run thru
the Orchard.

Games outdoors - Duck in the
hole etc.

McCraw Socials (not covered)
Pinnac, flint, author, checker,
Crosquand & Anagrams.

Later killed spelly at school.
Matta read to them.

Girls took piano lesson.

oldest girl sang & groups and
played the piano.

Chancey went Sunday at
20 p.m. to Bred & did return.
rip to des.

Luzes died & had poisoning.

Matta faith in God deepened
with every tragedy.

weddings & reception in
hall etc.

Caught bear man & his maid
& real hide & from got away.

parents, grand parents, great grand
parents.

matta in the cooler

in diff. stores in well
picking bread etc.
pick to 5's,
care slow.

~~"dollar to"~~

"as some as from in
picking, we will
have to order the
order to get."

making grave field.