



Housing and Redevelopment Authority: Project photographs.

Copyright Notice:

This material may be protected by copyright law (U.S. Code, Title 17). Researchers are liable for any infringement. For more information, visit www.mnhs.org/copyright.

[Cedar Street Parcel 14]

old Photos 1962
standing in this area
is John B. H. Skynner
Northern Fred B. H.
W. H. H., 5th St. Cedar St
Mason St & 6th St
W. H. H.



39

Housing and Redevelopment Authority
of the City of Saint Paul, Minnesota
BY SOLL S. GOULD

11:15 AM

AUG 19 1962

Parcel 14-13
East



Housing and Redevelopment Authority
of the City of Saint Paul, Minnesota
BY SOLL S. GOULD

B16

Parcel 14-1

10:00 AM

AUG 14 1962

Looking South on Cedar on
the corner of 6th & Cedar
South West corner



Housing and Redevelopment Authority
of the City of Saint Paul, Minnesota
BY SOLL S. GOULD

AUG 14 1962

Block 14
6th St.

Between Cedar + Walnut St.

Looking East

255



Housing and Redevelopment Authority
of the City of Saint Paul, Minnesota
BY SOLL S. GOULD

AUG 14 1962

approx. 2 p.m.

Parcel 14-2

n.w.

on 6th Street between
Walorke & Cedar
Looking East



MIDLAND

PUBLIC LOAN & DISCOUNT

Fanny Farmer

PEDRO'S
LOGGAGE HARDWARE
BILLIARDS BRIEFCASES

Bodines
HANDMADE CIGARETTES
PIANOS

WELCOME SIGN

Housing and Redevelopment Authority
of the City of Saint Paul, Minnesota
BY SOLL S. GOULD

#B6

AUG 14 1962

10¹⁰ am

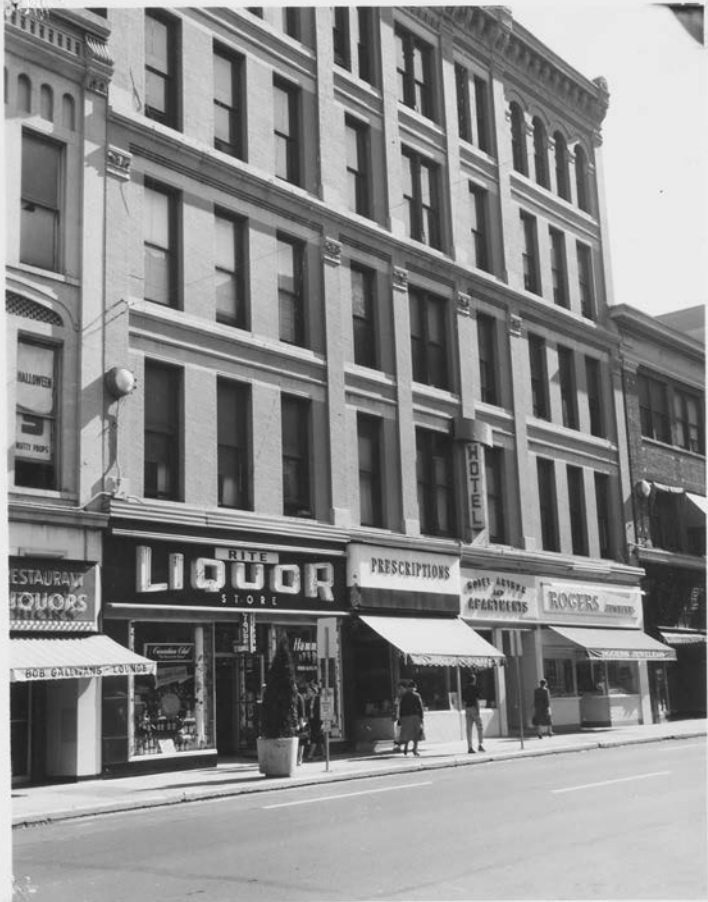
Parcel 14-7

N. W.

22

burnsita slow →

68733 CAMDEN - N.E.



Housing and Redevelopment Authority
of the City of Saint Paul, Minnesota
BY SOLL S. GOULD

CENTER OF COUNSELING



Housing and Redevelopment Authority
of the City of Saint Paul, Minnesota
BY SOLL S. GOULD

OCT 3 1963

#12

Parcel 14-~~7~~

10⁵⁵ am

N.W.

East side of Washburn
street between 6th
& 7th ~~between~~ middle of
the block

HOTEL
ARTHUR
APARTMENTS
& ROOMS
ELEVATOR (STREET)
SERVICE

HOTEL

PUBLIC
FIREARMS

UP-TOWN Sanitary Shop

UP-TOWN S

Carroll's and Brothers

WELCOME St Paul Open Golf Tournament



Housing and Redevelopment Authority
of the City of Saint Paul, Minnesota
BY SOLL S. GOULD

#B12

Panel 14-9

10:15 AM

J.W.

AUG 14 1962

364 - 370

Wabasta

372 - 378

North East corner of 5th & Wabasha



Housing and Redevelopment Authority
of the City of Saint Paul, Minnesota
BY SOLL S. GOULD

AUG 14 1962

12:00 Noon

#B 11

Parcel #14 — 10-11-12

Northeast side of 5th Street
Between Wabasha & Cedar



HOTEL
DUANE

HOTEL
DUANE

PARK
WAY

PROFESSIONAL PAINTING PAYS!
FOR A LIMITED NUMBER OF CONTRACTS
SEE LISTING IN THE DIRECTORY P. 2

Housing and Redevelopment Authority
of the City of Saint Paul, Minnesota
BY SOLL S. GOULD

#88

AUG 14 1962

12 noon

Parcel 14-13

East

North West corner of 5th
& Cedar