



Housing and Redevelopment Authority: Project photographs.

Copyright Notice:

This material may be protected by copyright law (U.S. Code, Title 17). Researchers are liable for any infringement. For more information, visit www.mnhs.org/copyright.

5 prints.

Block 27

Parcel 27-1

27-2

27-4

} Feb 5, 1978

Photo by: Robert Lee Shoffner

See also: negatives



This Photograph taken by
ROBERT LEE SHOFFNER

Position <u>67th</u> <u>ST.</u>	Serial No. <u>2</u>
Minn. 1 — <u>C.D. #17</u>	St. Paul, Minn.
Date <u>5</u> FEB 1978	<u>19</u>
<u>DEMOLITION OF PARCELS 1, 2 & 4</u> <u>BLOCK 27</u>	



This Photograph taken by
ROBERT LEE SHOFFNER

Position 6TH ST. Serial No. 3

Minn. 1 — C.D. #17

St. Paul, Minn.

Date 5 FEB 1978 19

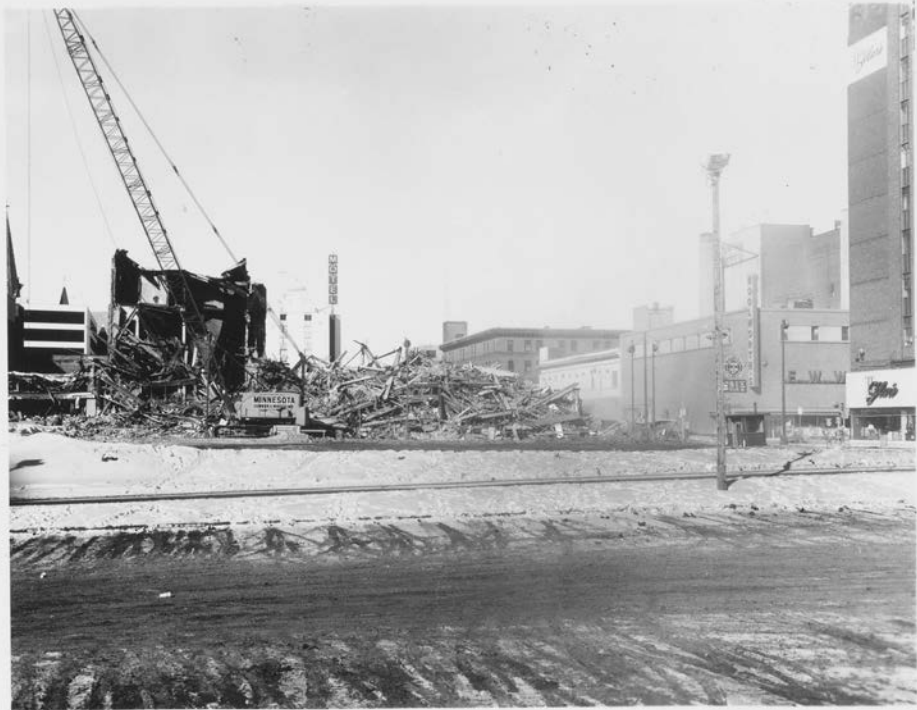
DEMOLITION OF PARCELS 1, 2 & 4
BLOCK 27



This Photograph taken by
ROBERT LEE SHOEFNER

748

Position	6 TH ST.	Serial No.	4
Minn. 1	-- C.D. # 17		
	St. Paul, Minn.		
Date	5	FEB 1970	19
DEMOLITION OF PARCELS 1, 2 & 4			
BLOCK 27			



148

This Photograph taken by
ROBERT LEE SHOFFNER

Position 7TH ST. Serial No. 5
Minn. 1 — C.D.# 17
St. Paul, Minn.
Date 5 FEB 1978 19
DEMOLITION PARCEL 1, 2 & 4
BLOCK 27



Position 6TH ST. Serial No. 1

Minn. 1 - C.D. # 17
St. Paul, Minn.

Date 5 FEB 1978 19

*DEMOLITION OF PARCELS 1, 2 & 9
BLOCK 27*