



Housing and Redevelopment Authority: Project photographs.

Copyright Notice:

This material may be protected by copyright law (U.S. Code, Title 17). Researchers are liable for any infringement. For more information, visit www.mnhs.org/copyright.

P-Silverburg Scrap
Iron + Metal Co.
34 East Fillmore

Dec. 8, 1967

Photo: Gould

Non-Buffered

LIGHT IMPRESSION

Renaissance

L. SILVERBERG
SCRAP IRON and
METAL CO.
34 EAST HILLMORE



592



592



592



592



592



592



592



592



592



592



592

A black and white photograph of a two-story brick building. The building's facade is made of large, rectangular bricks. On the right side of the building, there is a window with a grid pattern. Below the window, the text "L. SILVERBERG CO." is painted in large, white, sans-serif capital letters. Below that, "SCRAP IRON & METAL" is painted in a similar font. A dark-colored sedan is parked on the street in front of the building, angled towards the left. The street is paved with cobblestones or similar stones. To the left of the building, there is a narrow alleyway. In the background, a utility pole with cross-arms and wires is visible. The sky is overcast and grey. The entire photograph is framed by a white border.

L. SILVERBERG CO.
SCRAP IRON & METAL

592



592



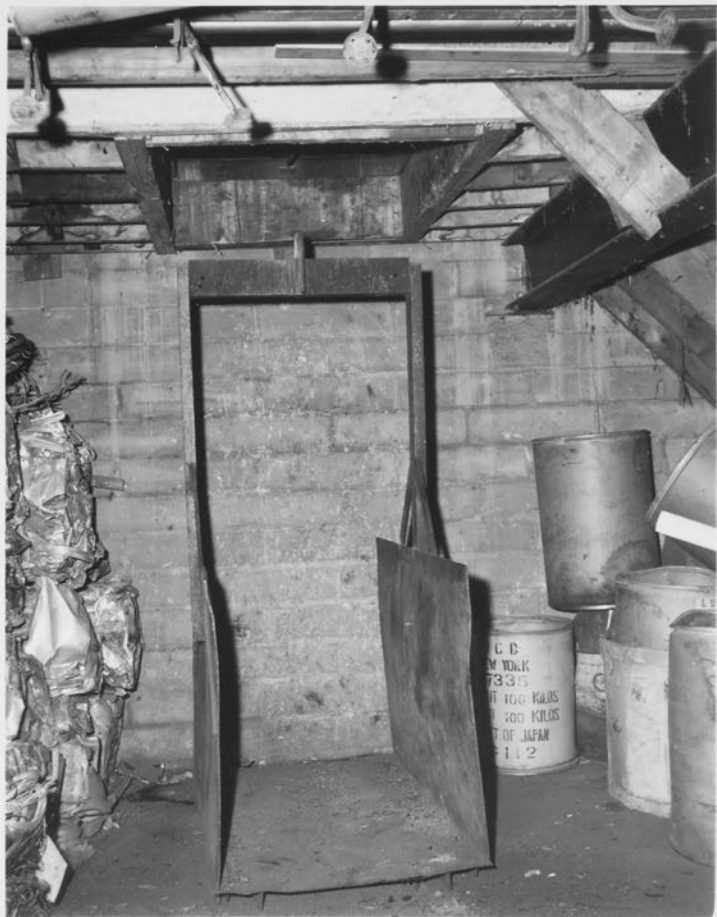
592



592



592





KODAK PAPER

KODAK PAPER

KODAK PAPER

KODAK PAPER

KODAK PAPER

KODAK PAPER

KODAK PAPER

KODAK PAPER

KODAK PAPER

KODAK PAPER

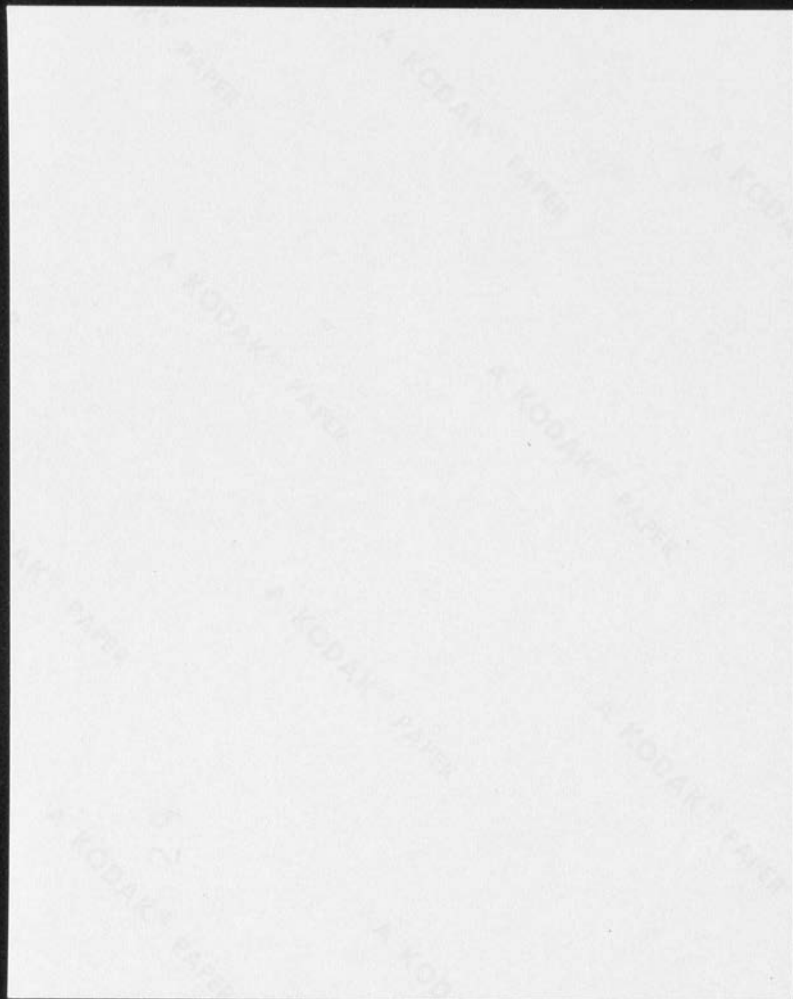


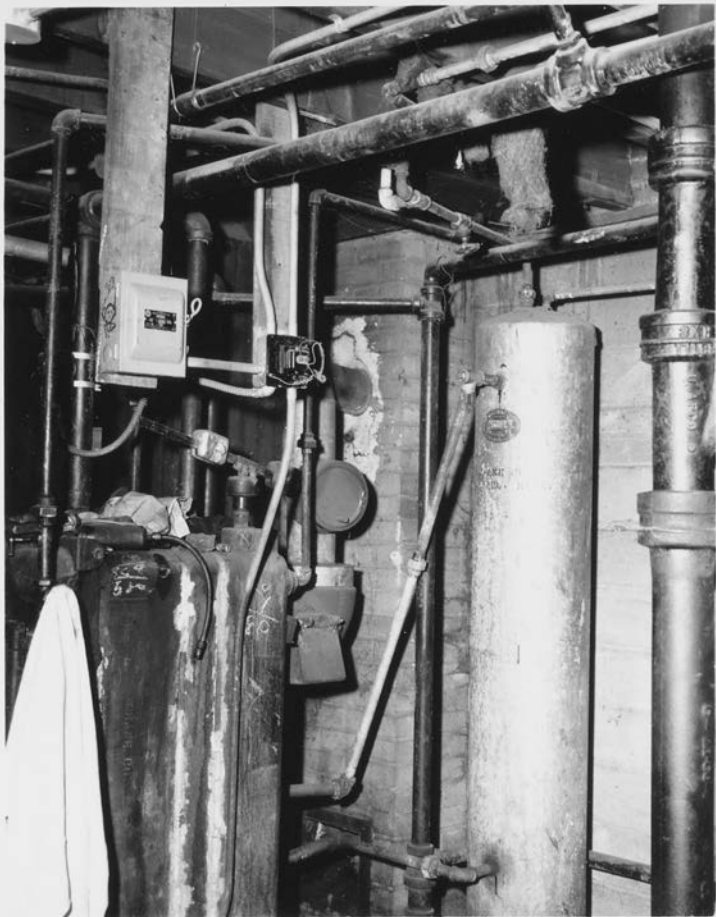


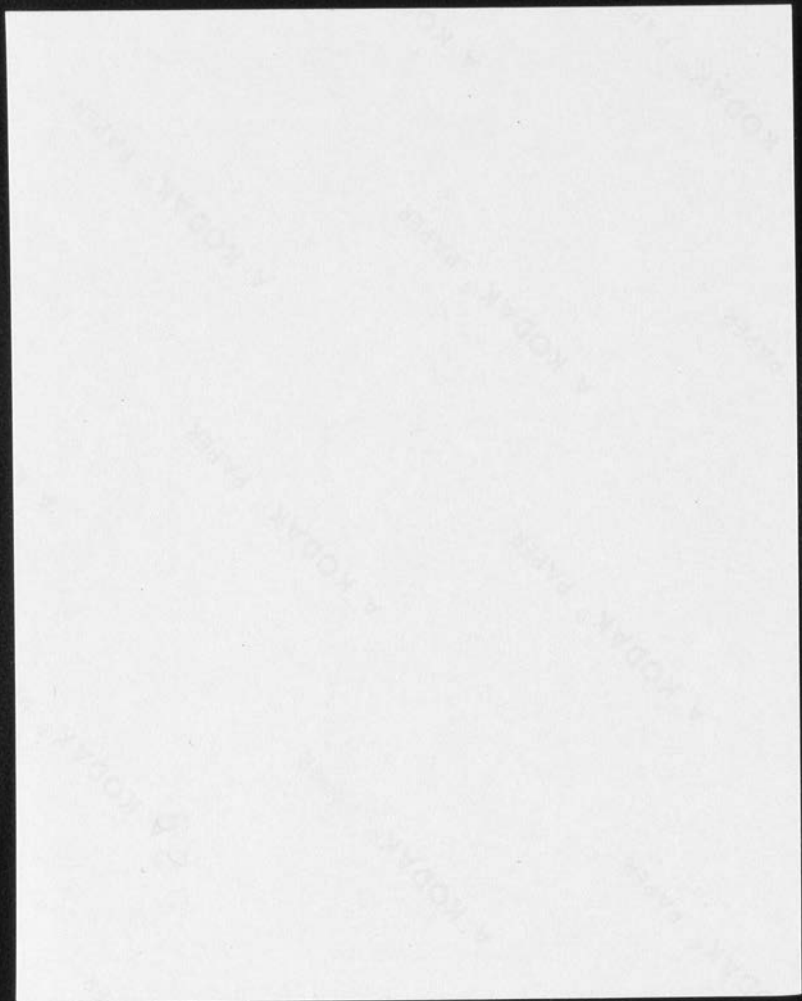


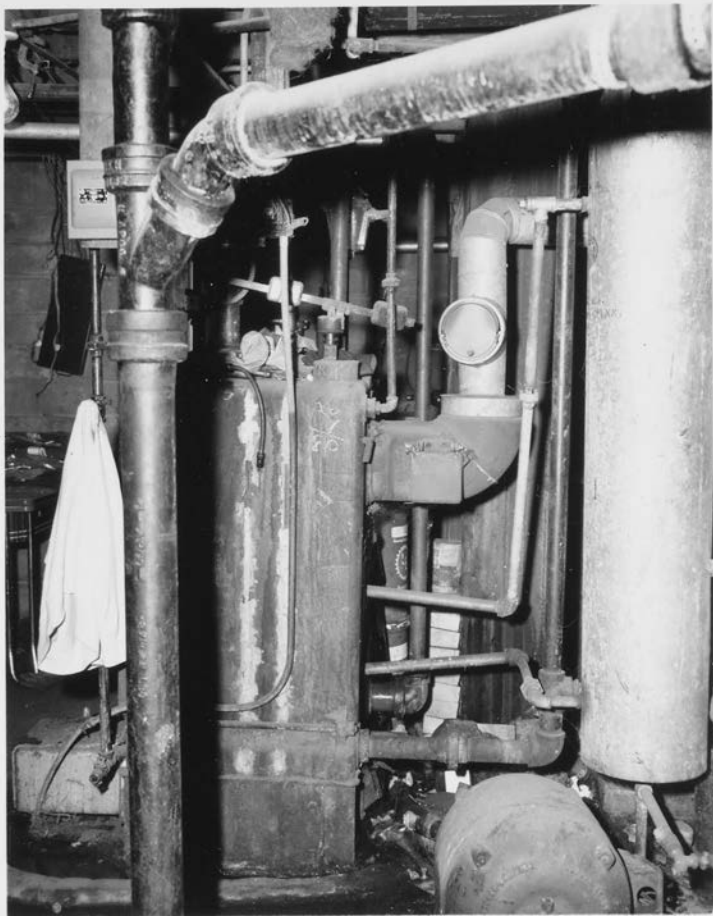














FURNACE and Fuel Log
Fuel Price Manual

Month	Year	Price
Jan	1910	1.00
Feb	1910	1.00
Mar	1910	1.00
Apr	1910	1.00
May	1910	1.00
Jun	1910	1.00
Jul	1910	1.00
Aug	1910	1.00
Sep	1910	1.00
Oct	1910	1.00
Nov	1910	1.00
Dec	1910	1.00
Jan	1911	1.00
Feb	1911	1.00
Mar	1911	1.00
Apr	1911	1.00
May	1911	1.00
Jun	1911	1.00
Jul	1911	1.00
Aug	1911	1.00
Sep	1911	1.00
Oct	1911	1.00
Nov	1911	1.00
Dec	1911	1.00

FAIRBANKS

PROS...











593



593



593



593



593



593



593



593



593



593



593



593



593



593



593