



Housing and Redevelopment Authority: Project photographs.

Copyright Notice:

This material may be protected by copyright law (U.S. Code, Title 17). Researchers are liable for any infringement. For more information, visit www.mnhs.org/copyright.



Mt. Aing Uti - Rise

200 east arch

10-11-1966

505

AV 1988.21. 751



201 Glencoe

929
576

Mt. Airy Site Before
Construction

BUILDING #25

(Mt. Airy
Site)

AV 1988.21.753



203 Glencoe

929

Mt. Airy site Before
Construction

BUILDING #25

AV 1988.21.754



209 Glencoe

929

Mt. Airy site Before
Construction

BUILDING #25

(NOT SHOWN ON SITE MAP.)

AV 1988. 21. 755



213 Glencoe

929

Mt. Airy site Before
construction

BUILDING # 25

AV 1988.21.756



636 Columbia

289

Mt. Airy site Before
Construction

BUILDING #32

AV 1988.21.757



642 Columbia

289

Mt. Airy site Before
construction

BUILDING #32

AV 1988.21. 758



650 Columbia

289

Mt. Airy site Before
Construction

BUILDING #31

AV 1988.21.759



652 Columbia

289

Mt. Airy site before
Construction

BUILDING #31

AV 1988.21.760



654 Columbia

289

At any site before

construction

BUILDING #31

AV 1988.21.761



656 Columbia

289

Mt. Airy site before

construction

BUILDING # 34

AV 1988.21.762



664 Columbia

289

Mt. Airy site before
construction

Building #34

AV 1988.21.763



Housing and Redevelopment Authority
of the City of Saint Paul, Minnesota
BY SOLL S. GOULD

APR 15 1966

Dunedin Terrace
Hi. Rise

884



A-1

July 19'57

Position A
Serial No 1

1271



Position B Serial 9/0 3

147

July 15

NE view



47

Position F Serial No 8

July 19 1957

NW view



This Photograph taken by
ROBERT LEE SHOFFNER
Housing & Redevelopment Authority
of the City of St. Paul, Minnesota

425



Position F. Sird No 7

14711

July 19 1957

SW view

KODAK
VELOX
PAPER

KODAK
VELOX
PAPER

KODAK
VELOX
PAPER

KODAK
VELOX
PAPER

KODAK
VELOX
PAPER



Position D Serial No 4

July 19

NW view

4711



47

Position K

Serial, No 15

NE View

July 19 1957



47 " Position L
Sioral Mo 16
SW view
July 19, 1957



47 "

Position I
Serial no. 12
NE view
July 19 1957



332

This Photograph taken by
ROBERT LEE SHOFFNER

This Photograph taken by
ROBERT LEE SHOFFNER
Housing & Redevelopment Authority
of the City of St. Paul, Minnesota



MENT

Maxine

373

This Photograph taken by
ROBERT LEE SHOFFNER
Housing & Redevelopment Authority
of the City of St. Paul, Minnesota



This Photograph taken by
ROBERT LEE SHOFFNER
Housing & Redevelopment Authority
of the City of St. Paul, Minnesota

982



374

This Photograph taken by
ROBERT LEE SHOFFNER
Housing & Redevelopment Authority
of the City of St. Paul, Minnesota



30811

Construction shack
and materials
storage area on
parking lot ~~10~~ 16 on
Mt. Airy Street.

6/8/57

Not transmitted to
PHA.



308 U

Footings for
Hi-Rise Mt. Airy
8/6/57 Not
Transmitted to
P.H.A.



30811 Bldg 84 Mt Airy

8/6 57

Not Transmitted to PHA



57

Nov 26 1957

Block Bounded by
Canada St. 14th St &
University Ave
Showing leveled fill
from Mt Argy
Minn 1-1



593

POSITION E SERIAL NO. 92
VIEW S. SHOWING BLDGS. 88, 89,
90.

MT. AIRY HOMES, MINN. 1-3
ST. PAUL, MINN. JAN. 21, 1958



PP 167

SA

639

POSITION PP SERIAL NO. 167
PORTION OF SLOPE BEHIND HI-RISE
LOOKING S.E.
MT. AIRY HOMES MINN. 1-3
ST. PAUL, MINNESOTA NOVEMBER 1, 1958



This Photograph taken by
ROBERT LEE SHOFFNER
Housing & Redevelopment Authority
of the City of St. Paul, Minnesota

60800



This Photograph taken by
ROBERT LEE SHOFFNER
Housing & Redevelopment Authority
of the City of St. Paul, Minnesota



Housing and Redevelopment Authority
of the City of Saint Paul, Minnesota
BY SOLL S. GOULD

FEB 10 1966

Mr. Adair

Mt. Airy Homes

130



of large

Serial No 17

147

Bldg 84

July 19 1957

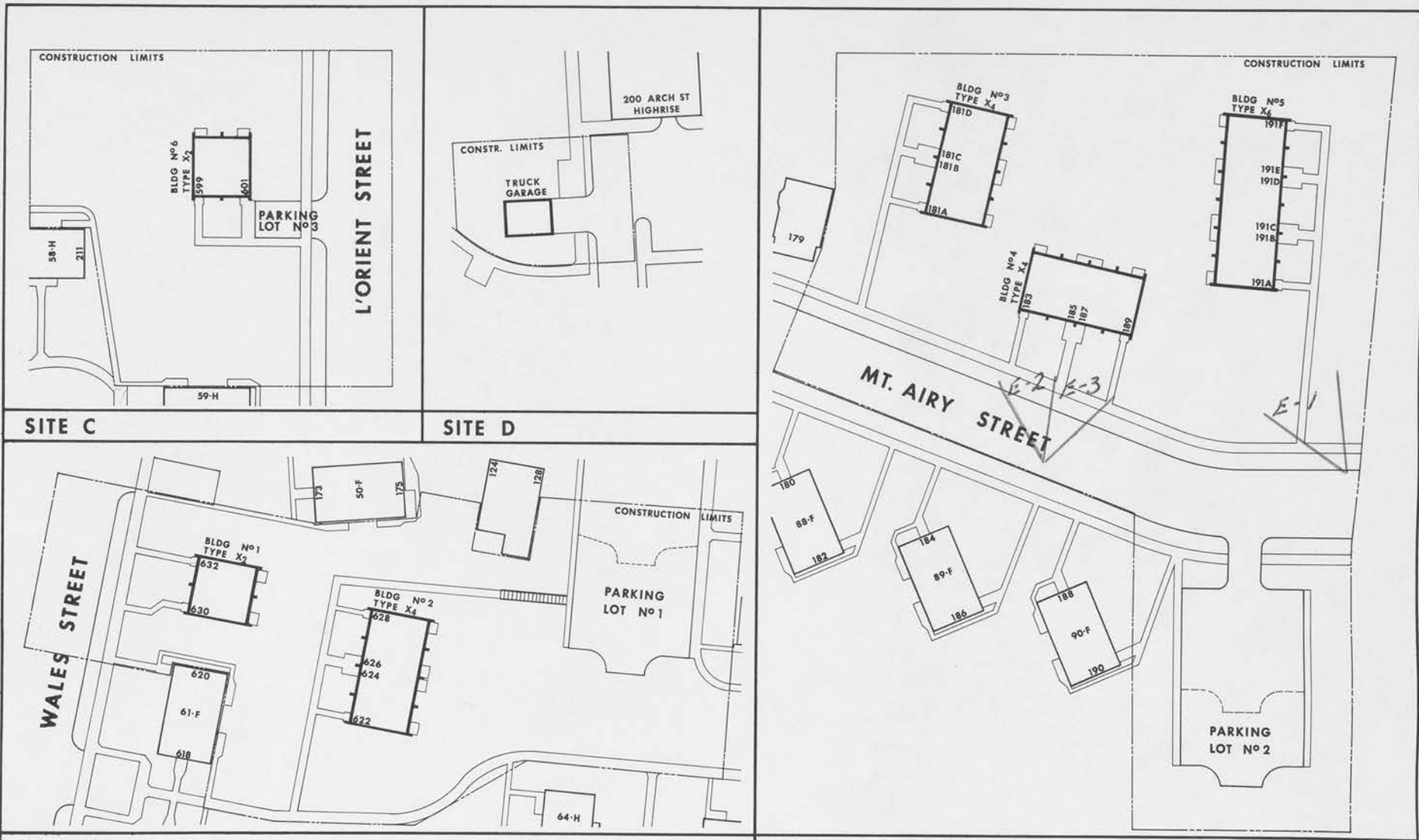
1-3



MT. AIRY

Mt. Airy High-rise

Please Return to Saint Paul Housing and Redevelopment Authority



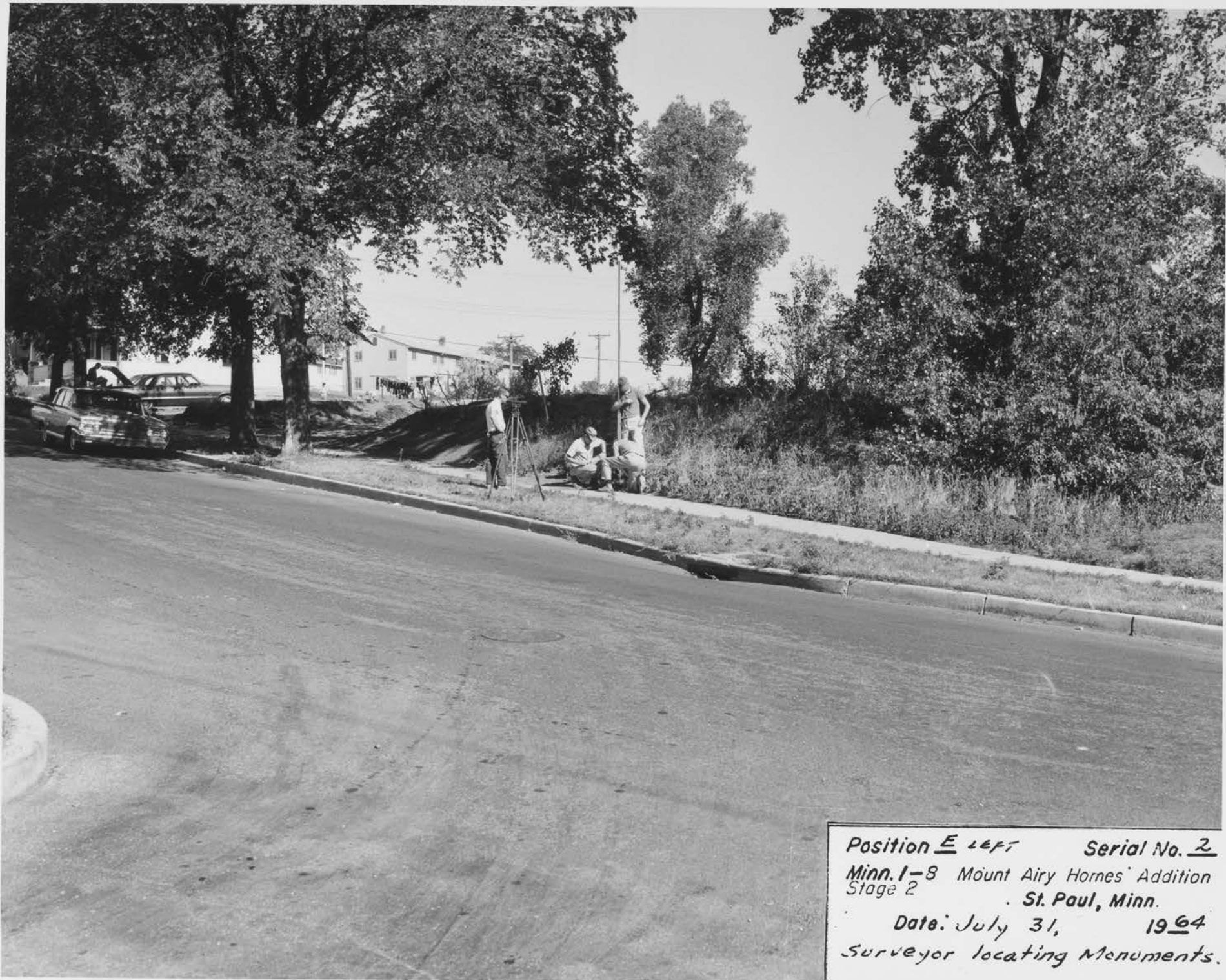
LEGEND FOR CONSTRUCTION	
OUTLINED - IN PROGRESS	SOLID - FINISHED
EXCAVATIONS AND FOUNDATIONS	BLACK
WALLS AND FLOORS	ORANGE
MISC. WORK PREVIOUS TO PLASTERING	GREEN
PLASTERING	BLUE
MISC. WORK AFTER PLASTERING	BROWN
PUNCH LIST ITEMS	RED

LEGEND FOR LANDSCAPE WORK	
OUTLINED - IN PROGRESS	HATCHED - FINISHED
PLANTING - TREES AND SHRUBS	YELLOW
LAWN WORK	PURPLE
<i>Photos: 1, 2 & 3</i> <i>Robert Lee Shuffner July 31, 1968</i>	
SCALE IN FEET 50 0 50 100	

SITE PLAN DIAGRAM
 ADDITION TO MOUNT AIRY HOMES
 PROJECT NUMBER MINNESOTA 1-8(B)
 SAINT PAUL MINNESOTA

ADKINS ASSOCIATES INC
 ARCHITECTS AND ENGINEERS

PUBLIC HOUSING ADMINISTRATION
 HOUSING AND HOME FINANCE AGENCY
 HOUSING AND REDEVELOPMENT AUTHORITY
 OF THE CITY OF SAINT PAUL, MINNESOTA



Position E LEFT Serial No. 2

Minn. 1-8 Mount Airy Homes' Addition
Stage 2 St. Paul, Minn.

Date: July 31, 1964

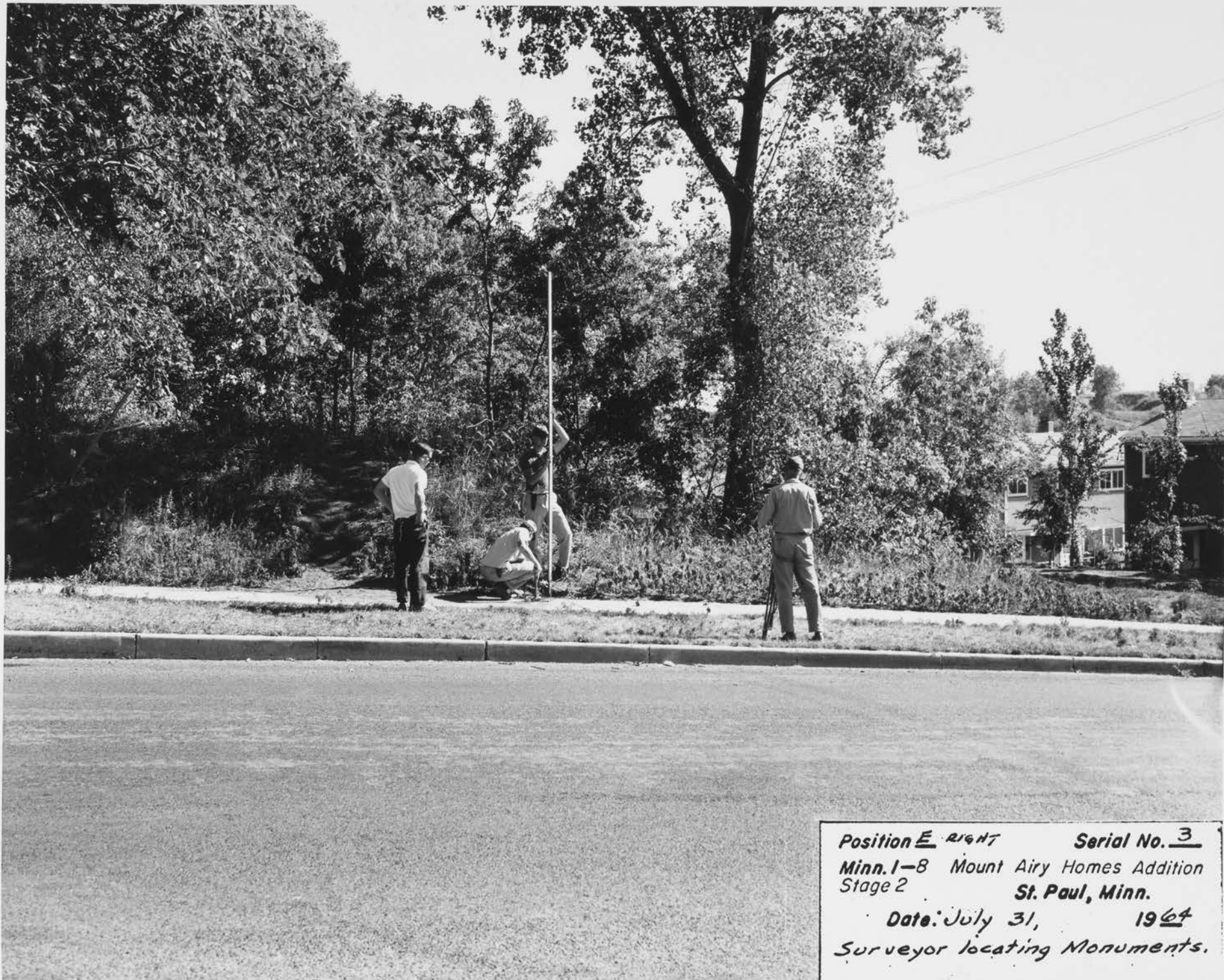
Surveyor locating Monuments.

Surveying for M.S. Army

7-31-1964

This Photograph taken by
ROBERT LEE SHOFFNER
Housing & Redevelopment Authority
of the City of St. Paul, Minnesota

AV1988.21.1



Position E RIGHT Serial No. 3
Minn. 1-8 Mount Airy Homes Addition
Stage 2 St. Paul, Minn.
Date: July 31, 1964
Surveyor locating Monuments.

Surveying for M. S. Ainsy

7-31-1964

This Photograph taken by
ROBERT LEE SHOFFNER
Housing & Redevelopment Authority
of the City of St. Paul, Minnesota

AV1988.262



*Position C Serial No. 7
Minn. 1-8 Mount Airy Homes Addition
Stage 2 St. Paul, Minn.
Date: August 4, 1964
Excavating for Building No. 3.*

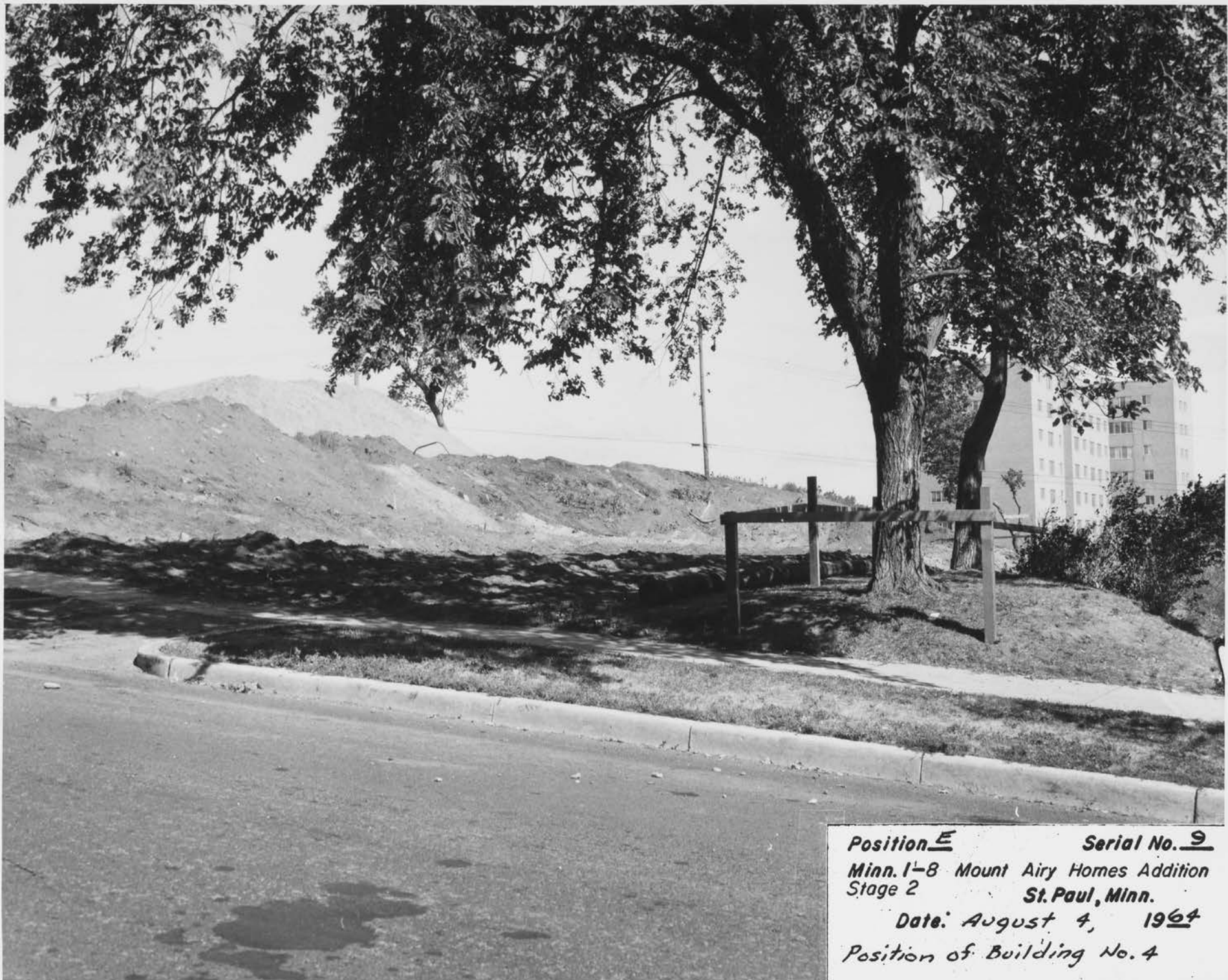
Excavation

M. J. A. Inc.

8-4-1964

This Photograph taken by
ROBERT LEE SHOFFNER
Housing & Redevelopment Authority
of the City of St. Paul, Minnesota

AV1988.21.3



Position E Serial No. 9
Minn. 1-8 Mount Airy Homes Addition
Stage 2 St. Paul, Minn.
Date: August 4, 1964
Position of Building No. 4

Position of Building no. 4
Mt. Airy

8-4-1964

This Photograph taken by
ROBERT LEE SHOFFNER
Housing & Redevelopment Authority
of the City of St. Paul, Minnesota

AV 1988.21.4



Position F RIGHT Serial No. 21
Minn. 1-8 Mount Airy Homes Addition
Stage 2 St. Paul, Minn.
Date: August 31, 1964
Building No. 1.

Construction of Building No. 1
Mt. Airy 8-31-1964

This Photograph taken by
ROBERT LEE SHOFFNER
Housing & Redevelopment Authority
of the City of St. Paul, Minnesota

AV 1988.21.5



Position A

Serial No. 12

Minn. 1-8 Mount Airy Homes Addition
Stage 2 St. Paul, Minn.

Date: August 31, 1964

Building No. 3.

Construction of Building no. 3

Mt. Airy

8-31-1964

This Photograph taken by
ROBERT LEE SHOFFNER
Housing & Redevelopment Authority
of the City of St. Paul, Minnesota

AV 1988.21.6



Position E LEFT Serial No. 18
Minn. 1-8 Mount Airy Homes Addition
Stage 2 St. Paul, Minn.
Date: August 31, 1964
Buildings No. 3 and 4.

Construction of Buildings No. 3+4

Mt. Airy

8-31-1964

This Photograph taken by
ROBERT LEE SHOFFNER
Housing & Redevelopment Authority
of the City of St. Paul, Minnesota

AV 1988.21.7



Position B LEFT Serial No. 13

Minn. 1-8 Mount Airy Homes Addition
Stage 2 . St. Paul, Minn.

Date: August 31, 1964

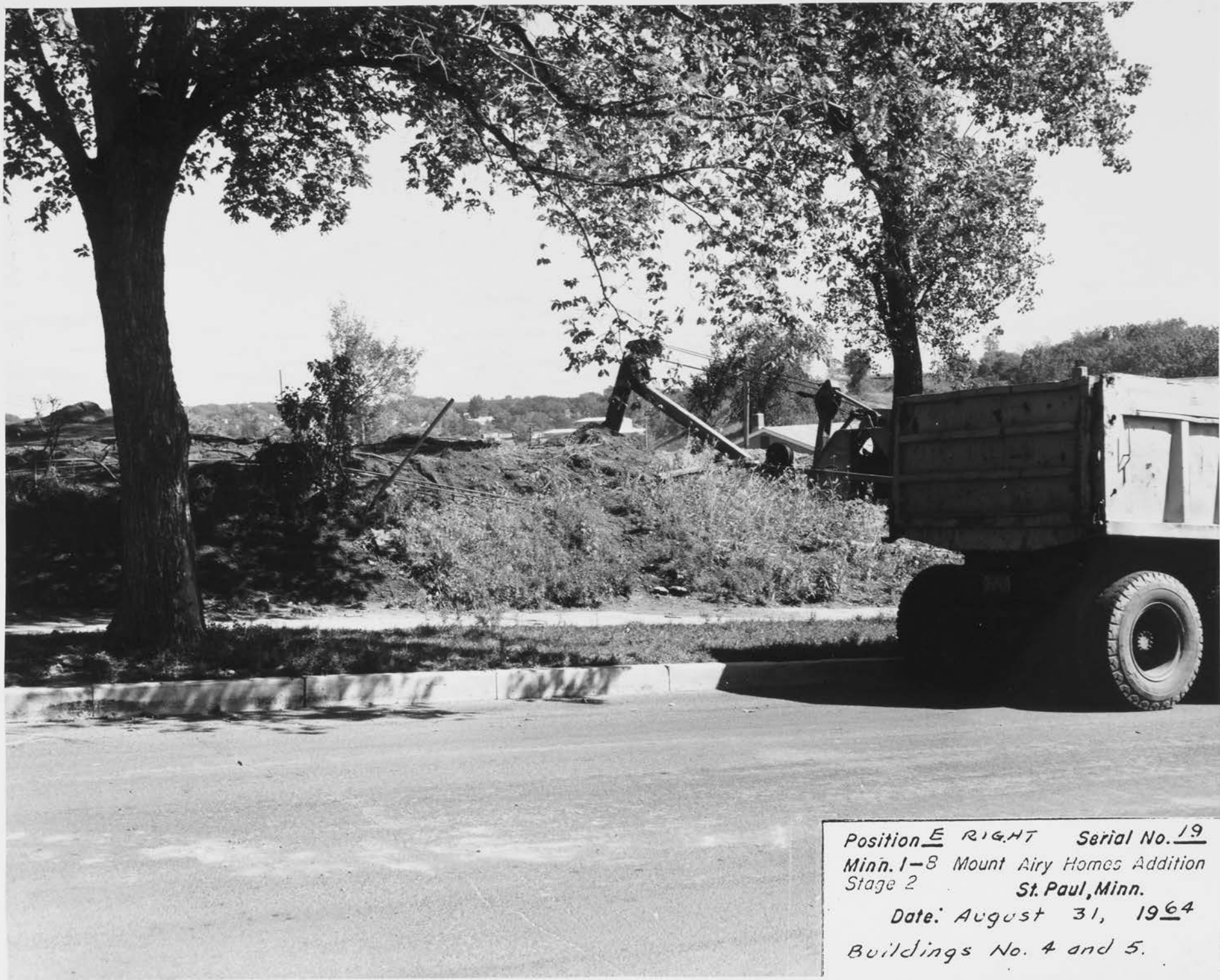
Buildings No. 4 and 5.

Construction of Buildings No. 4 + 5
Mt. Airy

8-31-1964

This Photograph taken by
ROBERT LEE SHOFFNER
Housing & Redevelopment Authority
of the City of St. Paul, Minnesota

AV 1988.21.8



Position E RIGHT Serial No. 19
Minn. 1-8 Mount Airy Homes Addition
Stage 2 St. Paul, Minn.
Date: August 31, 1964
Buildings No. 4 and 5.

Construction of Buildings No. 4+5

Mt. Airy

8-31-1964

This Photograph taken by
ROBERT LEE SHOFFNER
Housing & Redevelopment Authority
of the City of St. Paul, Minnesota

AV 1988, 21, 9



Position C LEFT Serial No. 15
Minn. 1-8 Mount Airy Homes Addition
Stage 2 St. Paul, Minn.
Date: August 31, 1964
Building No. 5

Construction of Building No. 5

Mt. Airy

8-31-1964

This Photograph taken by
ROBERT LEE SHOFFNER
Housing & Redevelopment Authority
of the City of St. Paul, Minnesota



Position C RIGHT. Serial No. 16
Minn. 1-8 Mount Airy Homes Addition
Stage 2 St. Paul, Minn.
Date: August 31, 1964
Soil Compaction at Building
No. 5.

Construction of Building No. 5

Mt. Airy

8-31-1964

This Photograph taken by
ROBERT LEE SHOFFNER
Housing & Redevelopment Authority
of the City of St. Paul, Minnesota



Position D Serial No. 17
Minn. 1-8 Mount Airy Homes Addition
Stage 2 St. Paul, Minn.
Date: August 31, 1964
Building No. 5.

Excavation for Building No. 5

Mt. Airy

8-31-1964

This Photograph taken by
ROBERT LEE SHOFFNER
Housing & Redevelopment Authority
of the City of St. Paul, Minnesota

AV 1988, 21, 12



Position F Serial No. 30
Minn. 1-8 Mount Airy Homes Addition
Stage 2 St. Paul, Minn.
Date: September 30, 1964
Building No. 1.

Excavation for Building No. 1

Mt. Airy

9-30-1964

This Photograph taken by
ROBERT LEE SHOFFNER
Housing & Redevelopment Authority
of the City of St. Paul, Minnesota

AV 1988.21.13



Position H

Serial No. 32

Minn. 1-8 Mount Airy Homes Addition
Stage 2 St. Paul, Minn.

Date: September 30, 1967

Building No. 2.

Construction of Building No. 2

Mt. Airy

9-30-1964

This Photograph taken by
ROBERT LEE SHOFFNER
Housing & Redevelopment Authority
of the City of St. Paul, Minnesota

AV 1988.21.14



Position E Serial No. 29

Minn. 1-8 Mount Airy Homes Addition
Stage 2

St. Paul, Minn.

Date: September 30, 1964

Building No. 4

Construction of Building No. 4

Mt. Airy

9-30-1964

This Photograph taken by
ROBERT LEE SHOFFNER
Housing & Redevelopment Authority
of the City of St. Paul, Minnesota

AV 1988.21.15



Position J Serial No. 34
Minn. 1-8 Mount Airy Homes Addition
Stage 2 St. Paul, Minn.
Date: September 30, 1964
Building No. 6.

Construction of Building No. 6

Mt. Airy

9-30-1964

This Photograph taken by
ROBERT LEE SHOFFNER
Housing & Redevelopment Authority
of the City of St. Paul, Minnesota

AV 1988.21.16



Position K *Serial No.* 35

Minn. 1-8 Mount Airy Homes Addition
Stage 2

St. Paul, Minn.

Date: September 30, 1964

Building No. 6.

Construction of Building No. 6

Mt. Airy

9-30-1964

This Photograph taken by
ROBERT LEE SHOFFNER
Housing & Redevelopment Authority
of the City of St. Paul, Minnesota

AV 1988.21.17



*Position F Serial No. 44
Minn. 1-8 Mount Airy Homes Addition
Stage 2 St. Paul, Minn.
Date: October 30, 1964
Building No. 1.*

Construction of Building No. 1

Mt. Airy

10-30-1964

This Photograph taken by
ROBERT LEE SHOFFNER
Housing & Redevelopment Authority
of the City of St. Paul, Minnesota

AV 1988.21.18



Position 6 Serial No. 45
Minn. 1-8 Mount Airy Homes Addition
Stage 2 St. Paul, Minn.
Date: October 30, 1964
Building No. 1.

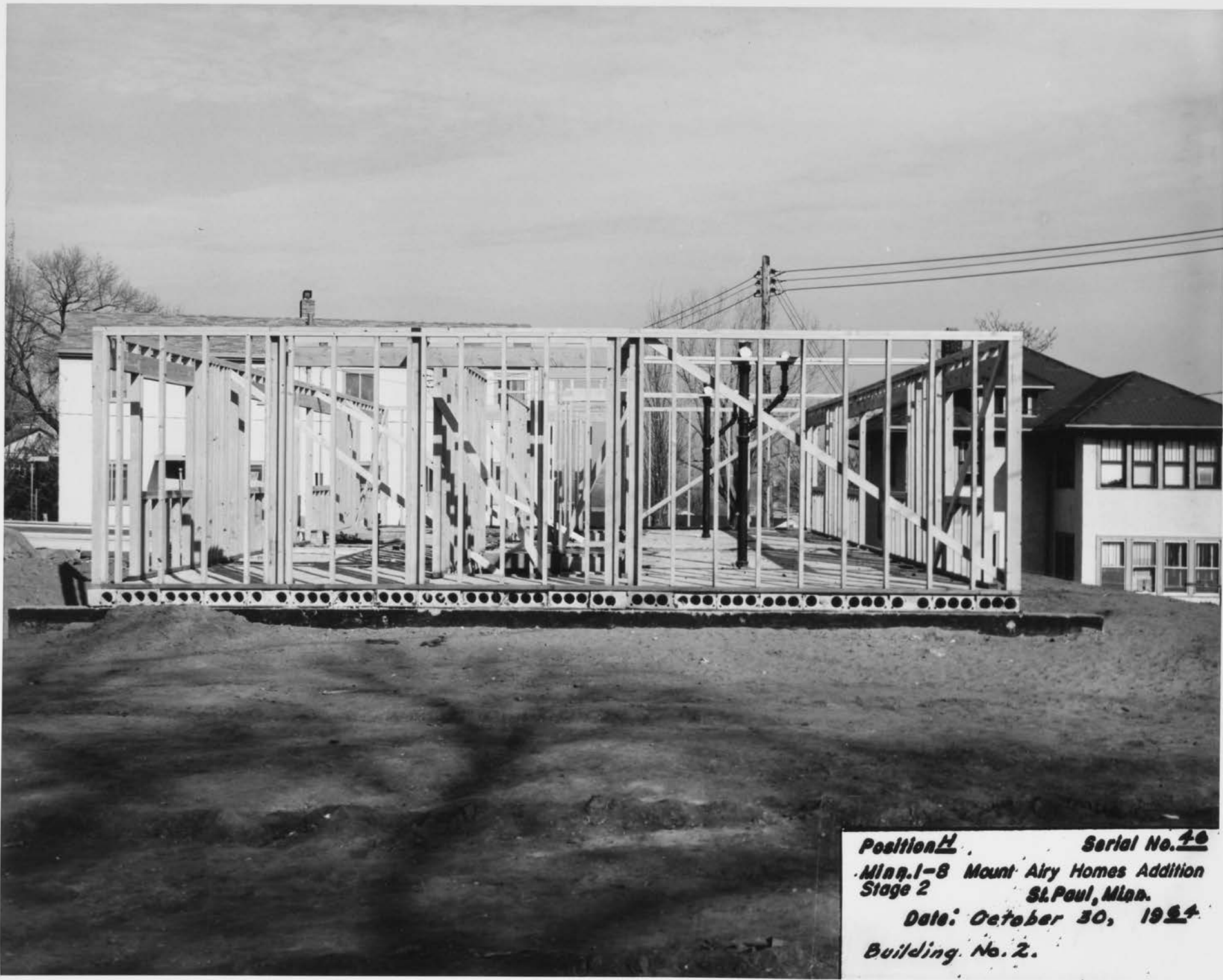
Construction of Building No. 1

Mt. Airy

10-30-1964

This Photograph taken by
ROBERT LEE SHOFFNER
Housing & Redevelopment Authority
of the City of St. Paul, Minnesota

AV 1988.21.19



Position H Serial No. 40
Min. 1-8 Mount Airy Homes Addition
Stage 2 St. Paul, Minn.
Date: October 30, 1954
Building No. 2.

Construction of Building No. 2

Mt. Arny

10-30-1964

This Photograph taken by
ROBERT LEE SHOFFNER
Housing & Redevelopment Authority
of the City of St. Paul, Minnesota

AV 1988.21.20



*Position I Serial No. 47
Minn. 1-8 Mount Airy Homes Addition
Stage 2 St. Paul, Minn.
Date: October 30, 1964
Building No. 2.*

Construction of Building No. 2

Mt. Airy

10-30-1964

This Photograph taken by
ROBERT LEE SHOFFNER
Housing & Redevelopment Authority
of the City of St. Paul, Minnesota

AV 1988.21.21



Position A *Serial No. 36*
Minn. 1-8 Mount Airy Homes Addition
Stage 2 St. Paul, Minn.
Date: October 30, 1964
Building No. 3.

Construction of Building No. 3

Mt. Airy

10-30-1964

This Photograph taken by
ROBERT LEE SHOFFNER
Housing & Redevelopment Authority
of the City of St. Paul, Minnesota

AV 1988.21.22



*Position E Serial No. 41
Minn. 1-8 Mount Airy Homes Addition
Stage 2 St. Paul, Minn.
Date: October 30, 1964
Building No. 4*

Construction of Building No. 4

Mt. Airy

10-30-1964

This Photograph taken by
ROBERT LEE SHOFFNER
Housing & Redevelopment Authority
of the City of St. Paul, Minnesota

AV 1988.21.23



Position D Serial No. 40
Minn. 1-8 Mount Airy Homes Addition
Stage 2 St. Paul, Minn.
Date: October 30, 1964
Buildings No. 4 & 5.

Construction of Buildings No

4 + 5 Mt. Airy

10-30-1964

This Photograph taken by
ROBERT LEE SHOFFNER
Housing & Redevelopment Authority
of the City of St. Paul, Minnesota



*Position K Serial No. 43
Minn. 1-8 Mount Airy Homes Addition
Stage 2 St. Paul, Minn.
Date: *October 30, 1964*
Building No. 6.*

Construction of Building No. 6

Mt. Airy

10-30-1964

This Photograph taken by
ROBERT LEE SHOFFNER
Housing & Redevelopment Authority
of the City of St. Paul, Minnesota

AU 1988.21.25



Position F Serial No. 56

Minn. 1-8 Mount Airy Homes Addition
Stage 2 St. Paul, Minn.

Date: November 30, 1964

Building No. 1.

Construction of Building No. 1

Mt. Airy

11-30-1964

This Photograph taken by
ROBERT LEE SHOFFNER
Housing & Redevelopment Authority
of the City of St. Paul, Minnesota

AV 1988.21.26



*Position H Serial No. 57
Minn. 1-8 Mount Airy Homes Addition.
Stage 2 St. Paul, Minn.
Date: November 30, 1964
Building No. 2.*

Construction of Building No. 2

Mt. Airy

11-30-1964

This Photograph taken by
ROBERT LEE SHOFFNER
Housing & Redevelopment Authority
of the City of St. Paul, Minnesota

AV 1988.21.27



Position 1 *Serial No. 48*
Minn. 1-8 Mount Airy Homes Addition
Stage 2 *St. Paul, Minn.*
Date: November 30, 1961
Building No. 3.

Construction of Building No. 3

Mt. Airy

11-30-1964

This Photograph taken by
ROBERT LEE SHOFFNER
Housing & Redevelopment Authority
of the City of St. Paul, Minnesota

AV 1988.21.28



Position B RIGHT Serial No. 49
Minn. 1-8 Mount Airy Homes Addition
Stage 2 St. Paul, Minn.

Date: November 30, 1964

Building No. 3.

Construction of Building No. 3

Mt. Airy

11-30-1964

This Photograph taken by
ROBERT LEE STOTNER
Housing & Redevelopment Authority
of the City of St. Paul, Minnesota

AV 1988.21.29



Position B Serial No. 50
Minn. 1-8 Mount Airy Homes Addition
Stage 2 St. Paul, Minn.
Date: November 30, 1964
Building No. 4.

Construction of Building No. 4

Mt. Airy

11-30-1964

This Photograph taken by
ROBERT LEE SHOFFNER
Housing & Redevelopment Authority
of the City of St. Paul, Minnesota

AV1988.21.30



Construction of Building No. 4

Mt. Airy

11-30-1964

This Photograph taken by
ROBERT LEE SHOFFNER
Housing & Redevelopment Authority
of the City of St. Paul, Minnesota

Position	<u>E</u>	Serial No.	<u>54</u>
Minn.	<u>1-8</u>	<u>Mt. Airy Homes</u>	
	<u>stage 2</u>	St. Paul, Minn.	
Date	<u>November 30 1964</u>		
Building	<u>No. 4</u>		

AV 1988.21.31



Completed Garage, Mt. Airy.

11-30-1964

This Photograph taken by
ROBERT LEE SHOFFNER
Housing & Redevelopment Authority
of the City of St. Paul, Minnesota

Position L Serial No. 52
Minn. 1-8 Mt. Airy Homes
stage 2 St. Paul, Minn.
Date November 30, 1964
Garage

AV 1988.21.32



Position D Serial No. 53
Minn. 1-8 Mount Airy Homes Addition
Stage 2 St. Paul, Minn.
Date: November 30, 1964
Building No. 5

Construction of Building No. 5

Mt. Airy

11-30-1964

This Photograph taken by
ROBERT LEE SHOFFNER
Housing & Redevelopment Authority
of the City of St. Paul, Minnesota

AV 1988.21.33



Position ✓ Serial No. 55
Mian. 1-8 Mount Airy Homes Addition
Stage 2 St. Paul, Mian.
Date: November 30, 1964
Building No. 6.

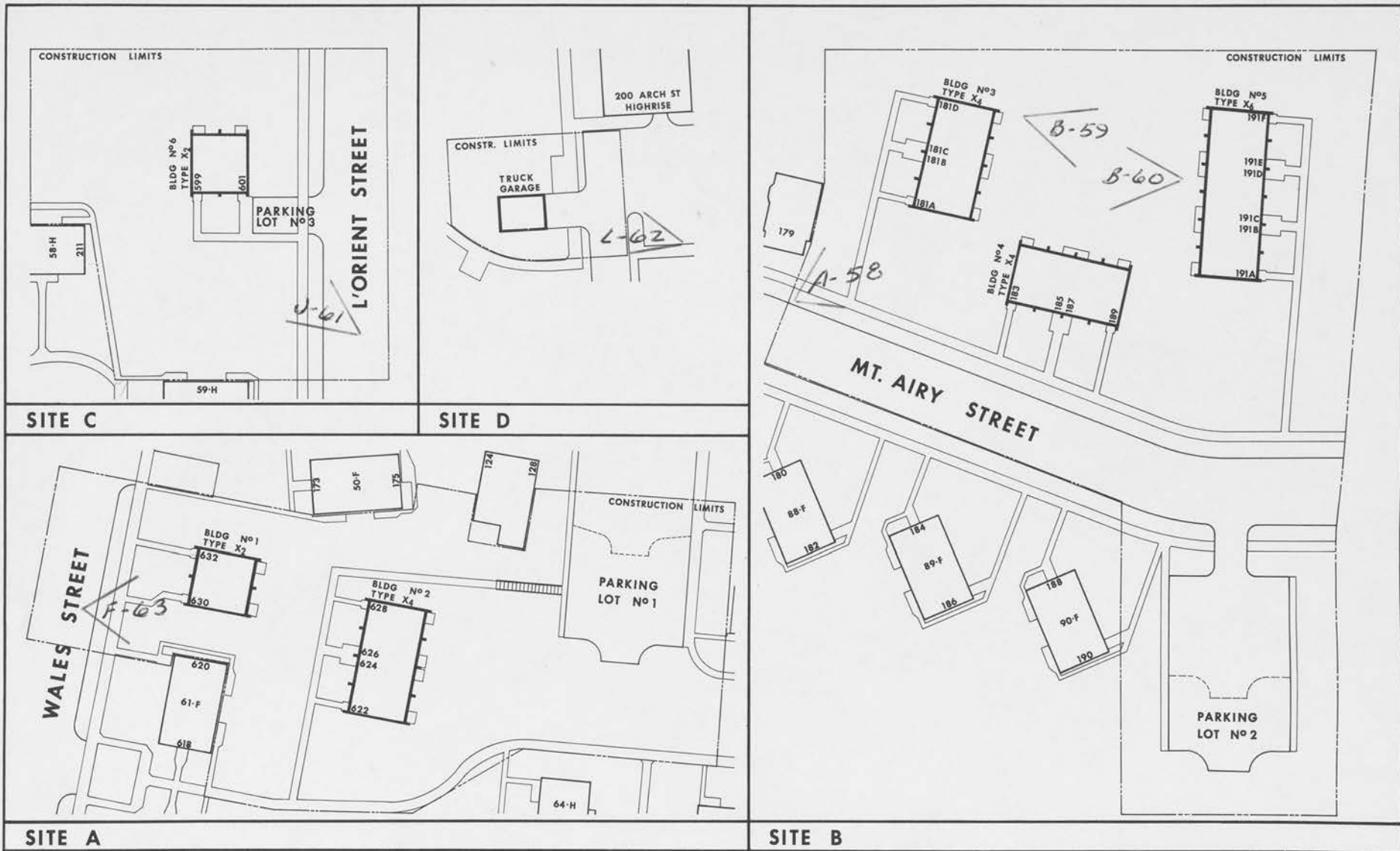
Construction of Building No. 6

Mt. Airy.

11-30-1964

This Photograph taken by
ROBERT LEE SHOFFNER
Housing & Redevelopment Authority
of the City of St. Paul, Minnesota

AV 1988.21.34



LEGEND FOR CONSTRUCTION	
OUTLINED - IN PROGRESS	SOLID - FINISHED
EXCAVATIONS AND FOUNDATIONS	BLACK
WALLS AND FLOORS	ORANGE
MISC. WORK PREVIOUS TO PLASTERING	GREEN
PLASTERING	BLUE
MISC. WORK AFTER PLASTERING	BROWN
PUNCH LIST ITEMS	RED

LEGEND FOR LANDSCAPE WORK	
OUTLINED - IN PROGRESS	HATCHED - FINISHED
PLANTING - TREES AND SHRUBS	YELLOW
LAWN WORK	PURPLE
<i>Prepares 58 to 63</i> <i>Robert Lee Hoffmann, Dec. 28, 1967</i>	
SCALE IN FEET 	

SITE PLAN DIAGRAM

ADDITION TO MOUNT AIRY HOMES
 PROJECT NUMBER MINNESOTA 1-8(B)
 SAINT PAUL MINNESOTA

ADKINS ASSOCIATES INC
 ARCHITECTS AND ENGINEERS

PUBLIC HOUSING ADMINISTRATION
 HOUSING AND HOME FINANCE AGENCY
 HOUSING AND REDEVELOPMENT AUTHORITY
 OF THE CITY OF SAINT PAUL, MINNESOTA



*Position F Serial No. 63
Minn. 1-8 Mount Airy Homes Addition
Stage 2 St. Paul, Minn.*

Date: December 28, 1964

*Buildings No. 1 and 2 showing
extent of exterior work.*

Construction of Buildings No. 1+2

Mt. Airy

12-28-1964

This Photograph taken by
ROBERT LEE SHOFFNER
Housing & Redevelopment Authority
of the City of St. Paul, Minnesota

AV 1988.21.35



Position B₂ RIGHT Serial No. 60
Minn. 1-8 Mount Airy Homes Addition
Stage 2 St. Paul, Minn.

Date: December 28, 1964
Building No. 3 showing the
amount of stucco work.

Construction of Building No. 3

Mt. Airy

12-28-1964

This Photograph taken by
ROBERT LEE SHOFFNER
Housing & Redevelopment Authority
of the City of St. Paul, Minnesota

AV 1988.21.36



Position A Serial No. 58

*Minn. 1-8 Mount Airy Homes Addition
Stage 2 . St. Paul, Minn.*

Date: December 28, 1964.

Buildings No. 3, 4 and 5 showing exterior progress.

Construction of Buildings No. 3, 4, + 5

Mt. Airy

12-28-1964

This Photograph taken by
ROBERT LEE SHOFFNER
Housing & Redevelopment Authority
of the City of St. Paul, Minnesota

AV 1988.21.37



Position B₂ LEFT Serial No. 59

Minn. 1-8 Mount Airy Homes Addition
Stage 2 . St. Paul, Minn.

Date: December 28, 1964

Building No. 5 showing extent of exterior progress.

Construction of Building No. 5

Mt. Airy

12-28-1964

This Photograph taken by
ROBERT LEE SHOFFNER
Housing & Redevelopment Authority
of the City of St. Paul, Minnesota



Position ✓ Serial No. 61
Minn. 1-8 Mount Airy Homes Addition
Stage 2 St. Paul, Minn.

Date: December 28, 1964

Building No. 6 showing prepara-
tion for exterior work.

Construction of Building No. 6

Mt. Airy

12-28-1964

This Photograph taken by
ROBERT LEE SHOFFNER
Housing & Redevelopment Authority
of the City of St. Paul, Minnesota



Position L Serial No. 62

Minn. 1-8 Mount Airy Homes Addition
Stage 2 St. Paul, Minn.

Date: December 28, 1964

Truck garage adjacent to Mt.
Airy Hi-Rise.

Truck Garage - Mt. Airy

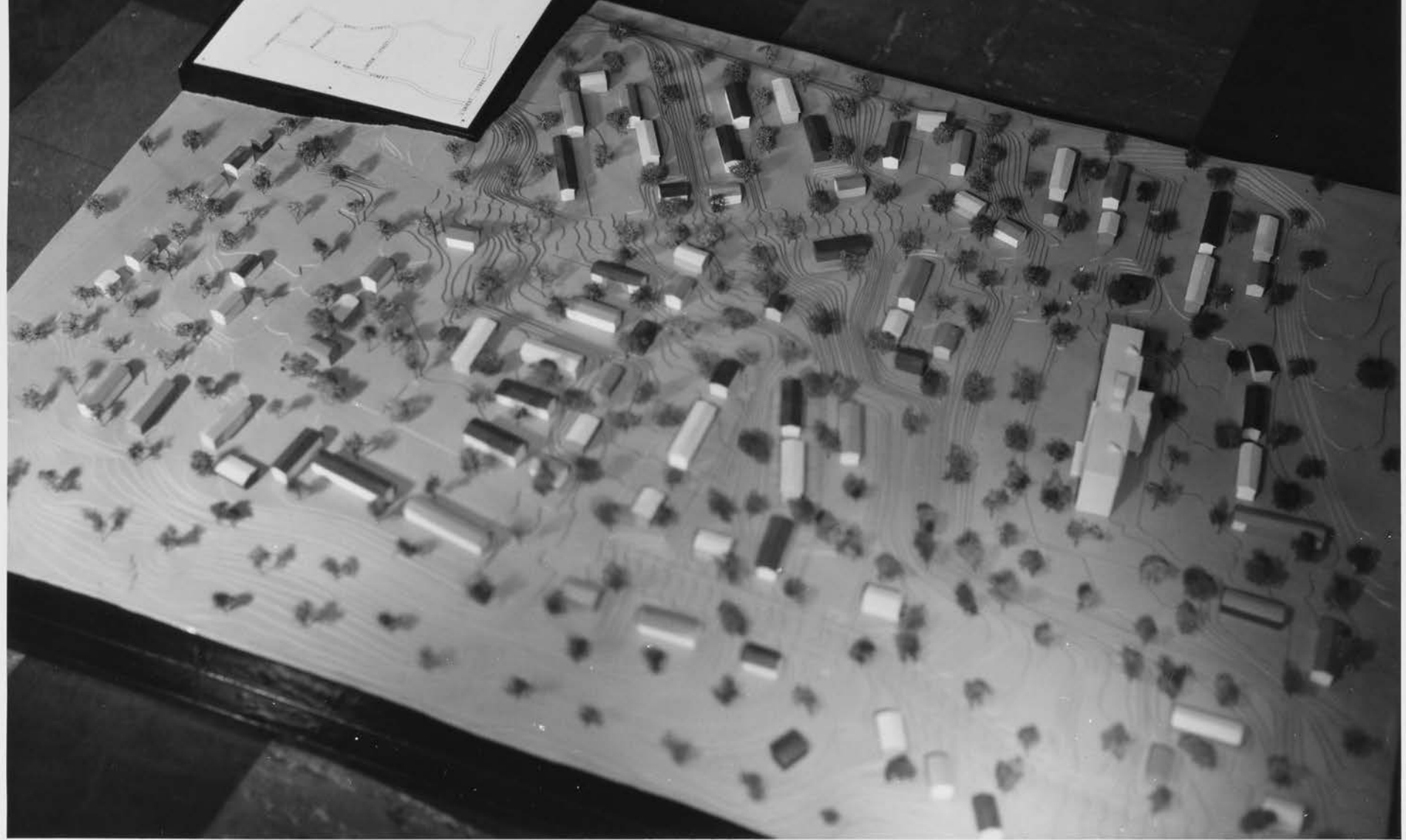
12-28-1964

12-28

This Photograph taken by
ROBERT LEE SHOFFNER
Housing & Redevelopment Authority
of the City of St. Paul, Minnesota

AV 1988.21.40

MT. AIRY HOMES
446 LOW RENT PUBLIC HOUSING UNITS
HOUSING AND REDEVELOPMENT AUTHORITY
OF THE CITY OF SAINT PAUL, MINNESOTA



Model of Mt. Ainy Homes