

Bulletin

September 17, 2007

Minnesota Department of Human Services □ P.O. Box 64964, St. Paul, MN 55164-0962

OF INTEREST TO

- County directors
- Social services supervisors
- Tribal directors
- Social services organizations

ACTION/DUE DATE

County directors and social services supervisors to review data to understand county performance on CCSA measures.

EXPIRATION DATE

September 17, 2009

Calendar Year 2006 Data on CCSA Measures

TOPIC

Inform county directors and county social services supervisors about the Children and Community Services Act (CCSA) calendar year 2006 performance on CCSA measures.

PURPOSE

CCSA calendar year 2006 data provides a numeric picture of county performance for CCSA measures. These on-going efforts further the cooperative partnership between the department and counties in advancing the overall goal of keeping Minnesota's children safe and improving their well-being.

CONTACT

The department encourages feedback and comments on issues relating to this bulletin. Phone or e-mail:

Paul H. Ramcharit
(651) 431-3877 or paul.ramcharit@state.mn.us
Minnesota Department of Human Services
PO Box 64962
St. Paul, MN 55164-0962

SIGNED

CHARLES E. JOHNSON
Assistant Commissioner
Children and Family Services Administration

Section 1: Background

Legislation enacted in 2003 created the Minnesota Family Investment Program (MFIP) and the Children and Community Services Act (CCSA) consolidated funds. The department administers these consolidated funds in a combined Biennial Service Agreement with counties. These service agreements include MFIP and CCSA outcomes; and incorporate statistics for counties to monitor their performance and set targets to improve outcomes for children and families.

MFIP outcomes and measures are defined in legislation and include the three-year MFIP Self-support Index, MFIP Work Participation Rate, and Promoting Equity in MFIP Outcomes. The department issues quarterly Management Indicators Reports that provide statistics on MFIP outcome measures.

Unlike MFIP, CCSA outcomes and measures are not defined in legislation. After consolidation in 2003, the department, county staff and other key stakeholders, adopted 10 CCSA measures in four program areas—children’s mental health, child safety, child permanency and child well-being—to assess outcomes for children. Six of these 10 measures mirror federal measures and standards currently used in child welfare services and federal reporting. While these federal standards were designed to measure performance at the state level, they were adopted to be used at the county level. Given the great fluctuation in numbers by measure, especially among smaller counties, county performance rates can be less stable. A balanced approach in the interpretation of these statistics is applicable as agency staff strives to keep Minnesota’s children safe and support their well-being.

CCSA statutory language requires the issuance of an annual report on counties’ progress in improving their outcomes. The first report was published in August 2005 in [bulletin #05-68-08](#) using calendar year (CY) 2004 data. The second was published in August 2006 in [bulletin #06-68-11](#) using CY 2005 data. This third report covers CY 2006 data, including data from the previous two calendar years.

CCSA Program Areas, Outcomes, Measures, Standards and Criteria used for CY 2006

Children’s Mental Health—*Improved mental health*

1 Of all children receiving mental health case management services during the reporting period, what percentage showed improvement as measured by the Child Behavior Checklist (CBCL) or the Child and Adolescent Functional Assessment Scale (CAFAS)? *In January 2007 most counties began collecting data in the Social Service Information System (SSIS) on the Child and Adolescent Functional Assessment Scale (CAFAS) or the Child Behavior Checklist (CBCL) scores for children receiving mental health case management services. Counties participating in the Child and Adolescent Service Intensity Instrument (CASII) and the Strengths and Difficulty Questionnaire (SDQ) pilots are reporting data directly to the department’s Children’s Mental Health Division. The 2007 data will be available in 2008.*

Child Safety—*Reduced recurrence of child abuse/neglect*

2 Of all children who were victims of determined maltreatment during the first six months of the reporting period, what percentage had another determined report within six months and within 12 months? *For the six-month recurrence rate, a county meets or exceeds the national standard if 6.1 percent or fewer children had another determined report within six months of the first. For the 12-month recurrence rate, the annual state performance is used as the standard (7.5 percent in 2006).*

The denominator includes all children with a determined allegation of maltreatment between Jul. 1 and Dec. 31, 2005. The numerators were all children who had another determined maltreatment within the next 183 days for the 6-months recurrence rate, and all children who had another determined maltreatment within the next 365 days for the 12-months recurrence rate.

Child Safety—*Reduced incidence of child abuse/neglect in out-of-home placement*

3 Of all children in out-of-home placement during the reporting period, what percentage experienced determined maltreatment by a foster parent? *A county meets or exceeds the national standard if 0.57 percent or fewer children experienced determined maltreatment by a foster parent.*

The denominator includes all children in out-of-home placement in CY 2006. The numerator is the number of children with a determined allegation of maltreatment where the relationship of the offender was foster parent or former foster parent.

Child Permanency—*Reduced return to out-of-home placement*

4 Of all children who entered out-of-home placement during the reporting period, what percentage re-entered within 12 months of a prior placement? *A county meets or exceeds the national standard if 8.6 percent or fewer children re-entered placement within 12 months.*

The denominator includes all children who entered placement in CY 2006. The numerator is the number of these children that had a prior placement within the previous 365 days from the date of entry into placement in CY 2006.

Child Permanency—*Timeliness of permanency*

5 Of all children who exited out-of-home placement to reunify with their parents or caretakers during the reporting period, what percentage were reunified within 12 months from the time of last removal from the home? *A county meets or exceeds the national standard if 76.2 percent or more children were reunified in less than 12 months from the time of the latest removal from the home.*

The denominator includes all children who exited out-of-home placement to reunify with their parents or caretakers in CY 2006. The numerator is the number of these children that had been reunified within 365 days from the date of last removal from home.

6 Of all children who exited out-of-home placement to adoption during the reporting period, what percentage were adopted within 24 months from the time of last removal from the home?

A county meets or exceeds the national standard if 32.0 percent or more children exited out-of-home placement to adoption in less than 24 months from the time of the latest removal from the home.

The denominator includes all children who exited out-of-home placement to adoption in CY 2006. The numerator is the number of these children whose adoption is within 730 days from the date of last removal from home.

7 Of all children who exited out-of-home placement to a permanent transfer of legal and physical custody to a relative during the reporting period, what percentage transferred within 12 months from the time of last removal from the home? *The annual state performance is used as the standard for this measure (64.0 percent in 2006).*

The denominator includes all children who exited out-of-home placement to a permanent transfer of legal and physical custody to a relative in CY 2006. The numerator is the number of these children that had a permanent transfer of legal and physical custody to a relative within 365 days from the date of last removal from home.

Child Permanency—*Placement stability*

8 Of all children who have been in out-of-home placement for less than 12 months from the time of the latest removal from the home during the reporting period, what percentage had two or fewer placement settings? *A county meets or exceeds the national standard if 86.7 percent or more children had no more than two placement settings.*

The denominator includes all children in out-of-home placement for less than 365 days from the date of last removal from the home in CY 2006. The numerator is the number of these children that had two or fewer placement settings during the 365 days.

Child Well-being—*Received adequate services to meet physical and mental health needs*

9 What percentage of children in out-of-home placement longer than 30 days during the reporting period received a health exam within one year? *Preliminary numbers were published in [bulletin #06-68-11](#). In this report, both 2005 and 2006 data are included. State law requires that all children in placement greater than or equal to 30 days receive a physical examination within one year. For 2006 data, a physical examination could have been completed in 2005 or 2006.*

Rates of health exam were computed using the following steps for calendar year CY 2006:

1. unduplicated count of kids in placement in calendar year 2006;
2. unduplicated count of kids in placement 30 days or more;
3. link medical and/or comprehensive teen checkups for these kids between the period Jan. 1, 2005 and Jan. 1, 2007;
4. identify kids that had a medical and/or comprehensive teen checkup (for this measure, a medical and/or comprehensive teen checkup equates a health exam). The number of kids with a medical and/or comprehensive teen checkup is used as the numerator and unduplicated count of kids in placement 30 days or more is used as the denominator for calculating the health exam rates above.

10 What percentage of eligible children in child protective services or out-of-home placement during the reporting period received a mental health screening? *The 2008 CCSA report will provide county performance measures for children's mental health screening data. The data will provide a relative measure of how counties are performing in implementing children's mental health screenings. Screening exemption data will not be included in the calculation.*

The denominator will include all children who received specific child welfare services for CY 2007 and met the screening target population criteria. The numerator will be the number of children with mental health screens for CY 2007.

Changes to the National Standards for Child Welfare

Six of the 10 CCSA performance measures are based on national standards established under the federal regulations that set forth requirements of the Child and Family Service Reviews (CFSRs). These standards were applied as performance standards during the first round of CFSRs conducted in all 50 states from 2001 to 2004.

Prior to the second round of CFSRs, the Administration of Children and Families announced new national standards to assess each state's performance. The new standards include two safety measures, similar to the two existing CCSA measures (reduced recurrence of child abuse/neglect, and reduced incidence of child abuse/neglect in out-of-home placement) and four permanency data composites, comprised of 15 separate performance measures that incorporate four existing CCSA measures (reduced return to out-of-home placement, reunification within 12 months, adoption within 24 months, and maintaining placement stability). Eleven other permanency measures have been added to provide a broader, more comprehensive evaluation of the state's performance on achieving permanency across age groups and varying time frames.

Minnesota is scheduled for a second CFSR in 2007, with the onsite review occurring at the end of September. These new national standards have been applied to assess the state's performance on safety and permanency outcomes. In upcoming months, the department will be working to compute the new national standards to the county level and adapt child welfare data systems and reporting to reflect the new national standards. The department plans to conduct orientation and training on the new national standards starting later this year and will work with county agencies to plan a timeline for aligning CCSA performance goals with the new national requirements.

What's New in the CY 2006 Report

In Section 2 of this report, trend data is provided to highlight the historical performance on selected CCSA measures before and after the creation of the consolidated fund.

In Section 3, three years of CCSA data by county is provided to give counties some perspective on the performance trend for their county. This data paints a numeric picture and is used as a tool to understand how Minnesota counties are performing on CCSA outcome measures.

In Section 4, racial/ethnic data is provided to understand and raise awareness on the performance of racial/ethnic groups on selected CCSA measures for which data is available.

As noted in previous reports, some counties indicated that while they are able to affect change to increase positive outcomes for children, some activities are outside of their control. This is understandable given the many key partners and stakeholders involved in the child welfare system. Counties play a key leadership role in these efforts and engaging others in a cooperative partnership is crucial to achieving better outcomes for children. As such, the department continues to encourage and support engaging community partners, sharing common goals, and keeping all partners focused on the goal of keeping children safe and supporting their well-being.

Alternative Formats

This information is available in other forms to people with disabilities by contacting us at 651-431-3809 (voice). TDD users can call the Minnesota Relay at 711 or (800) 627-3529. For the Speech-to-Speech Relay, call (877) 627-3848.

Section II: State-level Performance (CYs 2000-06)

Summary on Seven CCSA Measures

- During the past three years (2004, 2005, 2006), Minnesota met the national standard for five of the six national standards. The state continues to perform below the national standard on placement re-entries. Currently, Minnesota's CY 2006 performance on placement re-entries is at 19.1, percent compared to the national standard of 8.6 percent or lower. However, there has been yearly progress, from 27.3 percent in 2002 to 19.1 percent in 2006.
- The recurrence of child abuse/neglect within 12 months and the transfer of custody within 12 months are state measures. Performance on these measures has remained relatively steady. Subsequent tables will address these measures in more detail.

Minnesota performance on national and state measures (2000-06)

CCSA Measures	Standard	2000	2001	2002	2003	2004	2005	2006
Recurrence of child abuse/neglect within six months	6.1%↓	5.2	6.3	5.9	5.0	5.1	5.3	4.4
Recurrence of child abuse/neglect within 12 months	State Avg. ↓	8.6	10.1	9.2	8.9	8.4	9.2	7.5
Child maltreatment by a foster parent	0.57%↓	.20	.41	.28	.37	0.17	0.52	0.26
Re-entered placement within 12 months	8.6%↓	31.1	30.4	27.3	24.3	22.7	19.3	19.1
Reunified within 12 months	76.2%↑	90.5	91.2	91.2	90.3	91.9	91.4	90.4
Adopted within 24 months	32.0%↑	30.0	36.0	38.7	45.9	40.4	47.0	48.8
Transfer of custody within 12 months	State Avg. ↑	Data not available		65.2	61.1	70.8	69.0	64.0
Two or fewer placement settings	86.7%↑	85.6	86.1	87.9%	86.0	91.6	89.8	89.2

Yellow shading indicates that the state performance met or exceeded the national standard.

Grey shading/red font indicates that the state performance did not meet the national standard.

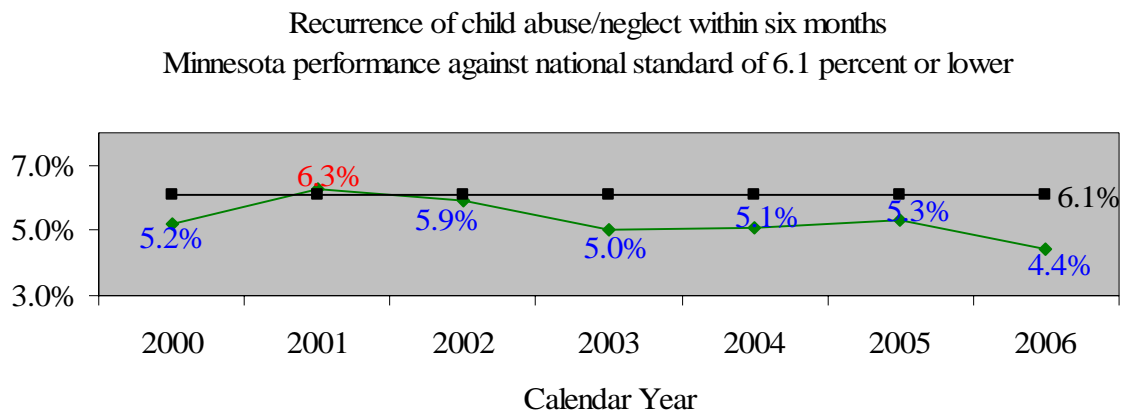
↓ = or lower; ↑ = or higher.

Recurrence of child abuse and neglect within six months

(National standard = 6.1 percent or lower)

- Since 2000 Minnesota met or exceeded the national standard in all but one year (2001).
- In 2006 the state rate dropped below the five percentage mark for the first time during the seven-year period in review.
- Average recurrence rate pre-CCSA was 5.6 percent. Post-CCSA performance improved to 4.9 percent.
- Average number and percent of counties that meet or exceed the national standard pre-CCSA is 64 (74 percent). The number of counties exceeding the national standard post-CCSA increased to 67 (77 percent).

Six-month recurrence rate	Pre-CCSA				Post-CCSA		
	2000	2001	2002	2003	2004	2005	2006
Unique determined victims	6,016	4,943	5,175	4,723	4,047	3,971	4,019
Victims with subsequent maltreatment	311	309	304	235	205	211	177
Six-month rate of recurrence	5.2%	6.3%	5.9%	5.0%	5.1%	5.3%	4.4%
Avg. rate pre/post CCSA	5.6%				4.9%		
Counties that meet/exceed standard							
Number	64	58	65	68	62	71	68
Percent	74%	67%	75%	78%	71%	82%	78%
Avg. number pre/post CCSA	64				67		
Avg. percent pre/post CCSA	74%				77%		



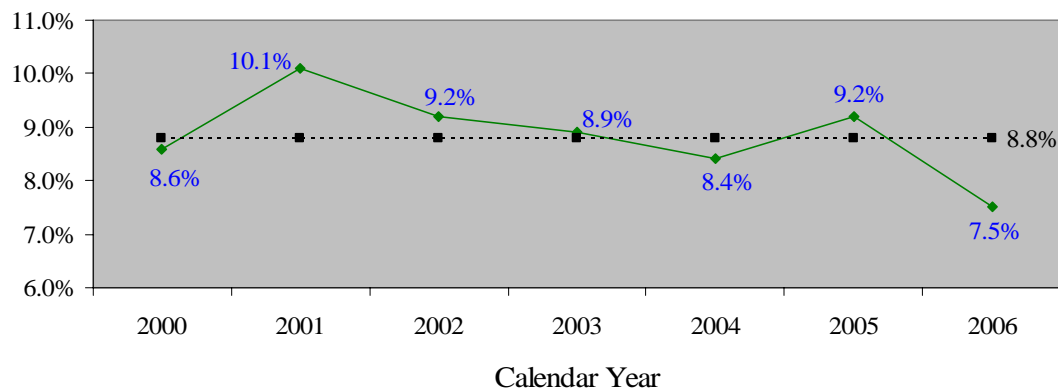
Recurrence of child abuse and neglect within 12 months

(State measure)

- The average 12-month recurrence rate for 2000-06 was 8.8 percent. Annual performance on this measure remained fairly stable over the period, from a peak of 10.1 percent in 2001 to a low of 7.5 percent in 2006.
- The average 12-month recurrence rate post-CCSA (8.4 percent) was better than pre-CCSA period (9.2 percent), even though the number of counties that meet or exceed the state performance dropped slightly from 61 to 58.

Twelve month recurrence rate	Pre-CCSA				Post-CCSA		
	2000	2001	2002	2003	2004	2005	2006
Unique determined victims	6,016	4,943	5,175	4,723	4,047	3,971	4,019
Victims with subsequent maltreatment	311	309	304	235	205	211	177
12-month rate of recurrence	8.6%	10.1%	9.2%	8.9%	8.4%	9.2%	7.5%
Avg. rate pre/post CCSA	9.2%				8.4%		
Counties that meet/exceed state performance							
Number	60	63	63	57	57	59	57
Percent	69%	72%	72%	66%	66%	68%	66%
Avg. number pre/post CCSA	61				58		
Avg. percent pre/post CCSA	70%				66%		

Rate of recurrence of child abuse/neglect within 12 months
Minnesota performance and average over 2000-06 (8.8 percent)



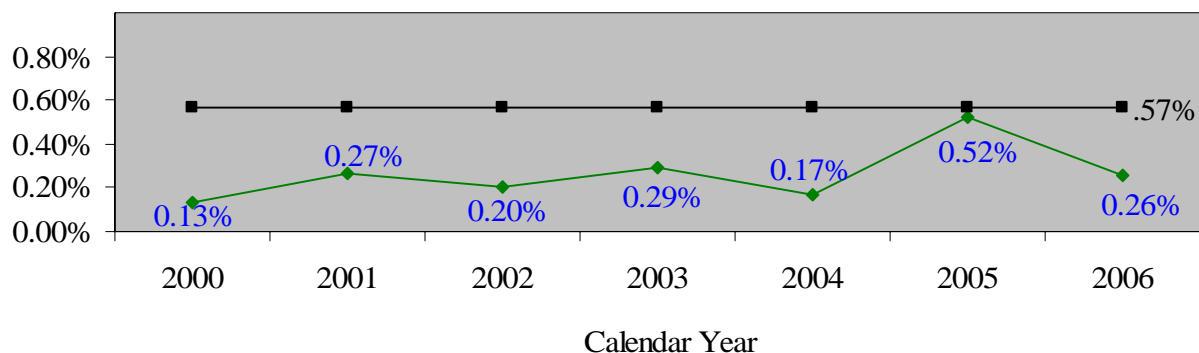
Child maltreatment by foster parent

(National standard = 0.57 percent or lower)

- Minnesota exceeded the national standard each year from 2000-06. Average maltreatment rate for the period was 0.26 percent.
- Average maltreatment rate post-CCSA was slightly higher than pre-CCSA (0.3 percent compared to 0.2 percent). Likewise, the average number of counties that exceeded the national standard post-CCSA was fewer (75 compared to 83).

Maltreatment rate	Pre-CCSA				Post-CCSA		
	2000	2001	2002	2003	2004	2005	2006
Children in out-of-home placement	18,451	17,587	17,202	15,294	14,359	14,723	14,770
Subject of determined maltreatment	24	47	35	45	24	77	39
Maltreatment rate	0.13%	0.27%	0.20%	0.29%	0.17%	0.52%	0.26%
Avg. rate pre/post CCSA	0.2%				0.3%		
Counties that meet/exceed standard							
Number	86	82	81	81	80	72	73
Percent	99%	94%	93%	93%	92%	83%	84%
Avg. number pre/post CCSA	83				75		
Avg. percent pre/post CCSA	95%				86%		

Child maltreatment by foster parent
Minnesota performance against the national standard of 0.57 percent or lower



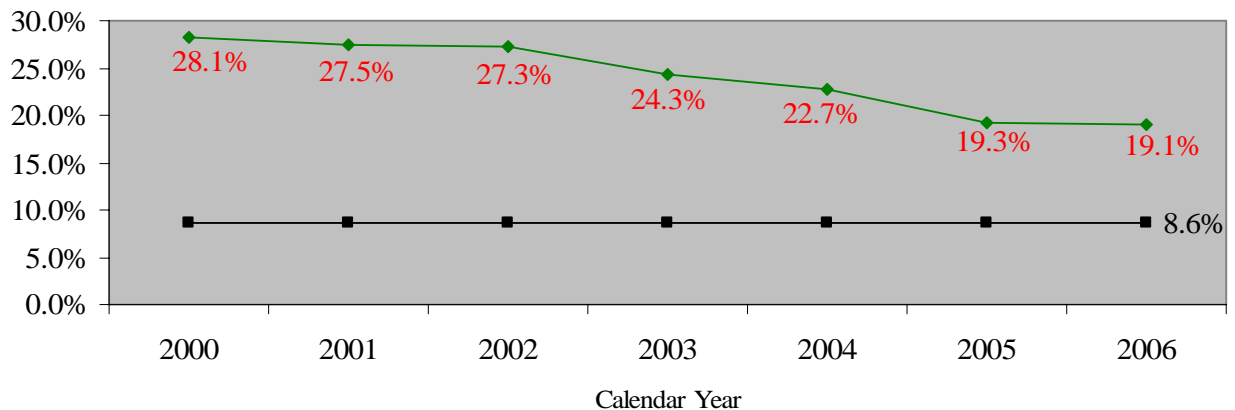
Re-entered placement within 12 months

(National standard = 8.6 percent or lower)

- Minnesota underperformed from the national standard of 8.6 percent or lower on this measure. Average performance for the period 2000-06 was 24.0 percent, from a high of 28.1 in 2000 to 19.1 percent in 2006.
- Counties have made continual improvement over the years, but the state is at least 10.5 percentage points from meeting and exceeding the national standard.
- Post-CCSA, more counties are meeting the national standard, even though 90 percent of counties are still below the national standard.

Re-entry rate	Pre-CCSA				Post-CCSA		
	2000	2001	2002	2003	2004	2005	2006
Entered placement	10,684	10,254	9,791	7,992	8,560	8,211	8,057
Re-entered placement within 12 months	3,007	2,821	2,676	1,941	1,941	1,583	1,538
Re-entry rate	28.1%	27.5%	27.3%	24.3%	22.7%	19.3%	19.1%
Avg. rate pre/post CCSA	26.8%				20.3%		
Counties that meet/exceed standard							
Number	4	1	2	2	7	11	9
Percent	5%	1%	2%	2%	8%	13%	10%
Avg. number pre/post CCSA	2				9		
Avg. percent pre/post CCSA	3%				10%		

Re-entered placement within 12 months
Minnesota performance against the national standard of 8.6 percent or lower

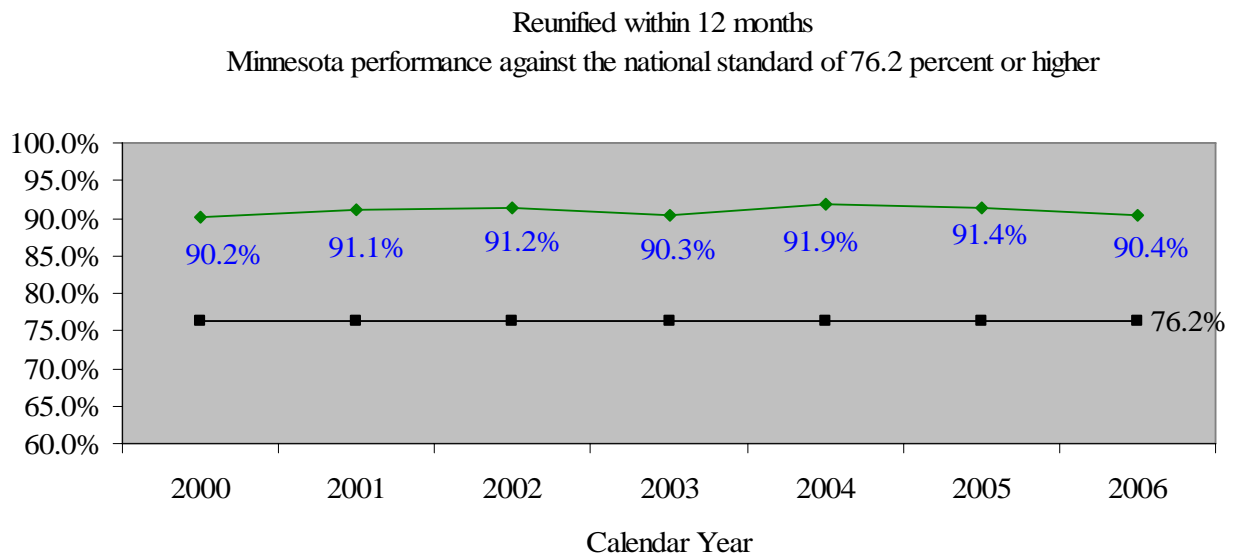


Reunified within 12 months

(National standard = 76.2 percent or higher)

- Minnesota met the national standard of 76.2 or higher each year since 2000. Average performance for the period 2000-06 was 90.9 percent.
- All but a few counties are meeting the national standard.
- County performance post-CCSA was slightly higher (91.2 compared to 90.7 percent); 82 counties were meeting the national standard.

Reunification rate	Pre-CCSA				Post-CCSA		
	2000	2001	2002	2003	2004	2005	2006
Total children reunified	7,353	6,653	6,785	5,603	4,863	5,084	5,085
Children reunified in 12 months or less	6,633	6,059	6,191	5,060	4,468	4,648	4,597
12-month reunification rate	90.2%	91.1%	91.2%	90.3%	91.9%	91.4%	90.4%
Avg. rate pre/post CCSA	90.7%				91.2%		
Counties that meet/exceed standard							
Number	79	82	82	79	81	84	81
Percent	91%	94%	94%	91%	93%	97%	93%
Avg. number pre/post CCSA	81				82		
Avg. percent pre/post CCSA	93%				94%		

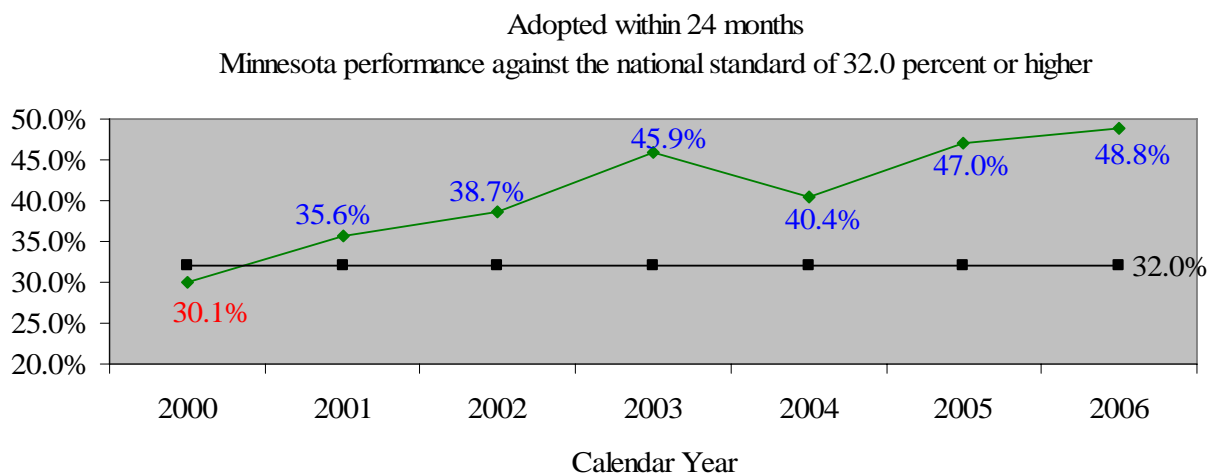


Adopted within 24 months

(National standard = 32.0 percent or higher)

- Minnesota met the national standard each year since 2001. Average performance over the period (2000-06) was 40.9 percent from a low of 30.1 percent, in 2000 to 48.8 percent in 2006.
- In post-CCSA, the average rate was 45.4 percent compared to 37.6 percent pre-CCSA. Average number of counties meeting the national standard in post-CCSA was 68 compared to 59 pre-CCSA.

Adoption rate (within 24 months)	Pre-CCSA				Post-CCSA		
	2000	2001	2002	2003	2004	2005	2006
Total children adopted	612	545	613	727	554	751	607
Children adopted in 24 months or less	184	194	237	334	224	353	296
24-month adoption rate	30.1%	35.6%	38.7%	45.9%	40.4%	47.0%	48.8%
Avg. rate pre/post CCSA	37.6%				45.4%		
Counties that meet/exceed standard							
Number	58	57	59	60	66	70	68
Percent	67%	66%	68%	69%	76%	80%	78%
Avg. number pre/post CCSA	59				68		
Avg. percent pre/post CCSA	67%				78%		



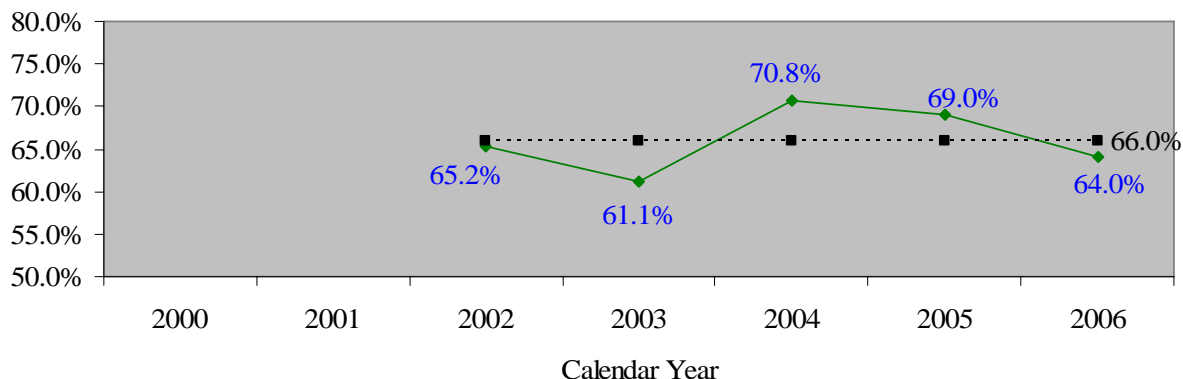
Transfer of Legal Custody within 12 Months

(State measure)

- Minnesota average performance on this measure was 66 percent during the period 2002-06, ranging from a low of 61 percent in 2003 to a high of 71 percent the following year.
- Average performance post-CCSA was better, at 67.9 percent compared to 63.2 in the two years preceding CCSA. An average of 63 counties were meeting the state performance in post-CCSA compared to 58 in pre-CCSA. Data for 2000-01 was not available.

Discharge rate (within 12 months)	Pre-CCSA				Post-CCSA		
	2000	2001	2002	2003	2004	2005	2006
Total children discharged	Data not available		348	561	486	519	544
Discharged in 12 months or less			227	343	344	358	348
12-month discharge rate			65.2%	61.1%	70.8%	69.0%	64.0%
Avg. rate pre/post CCSA			63.2%		67.9%		
Counties that meet/exceed state performance							
Number			59	56	62	65	63
Percent			68%	64%	71%	75%	72%
Avg. number pre/post CCSA			58		63		
Avg. percent pre/post CCSA			66%		73%		

Transfer of legal custody to a relative within 12 months
Minnesota annual and average performance over the period (66.0 percent)



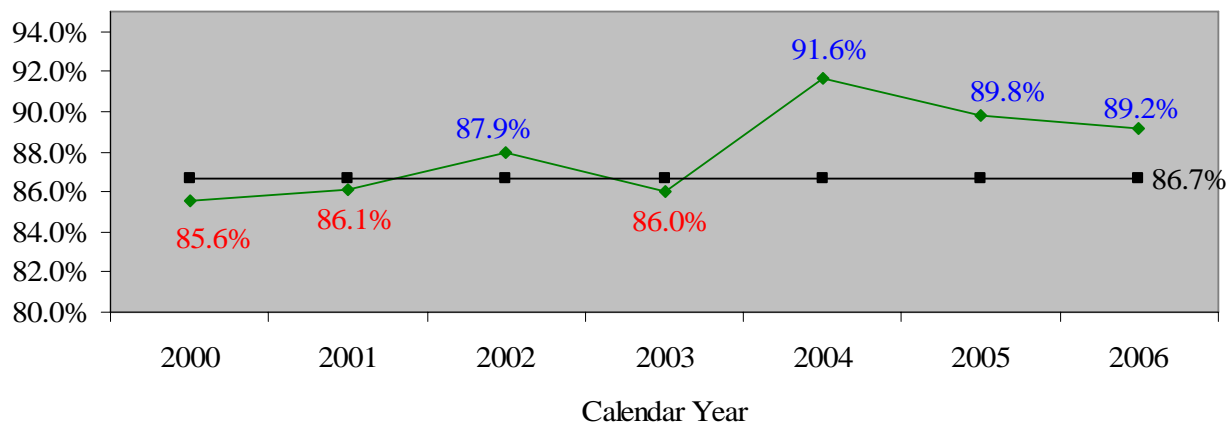
Two or fewer placement settings

(National standard = 86.7 percent or higher)

- Minnesota met the national standard in the past three years. Average performance over seven-year period was 88 percent.
- Average performance in post-CCSA was better than pre-CCSA—90.2 percent compared to 86.4 percent. More counties are meeting the national standard (74 post-CCSA compared to 65 pre-CCSA).

Rate of two or fewer placement settings	Pre-CCSA				Post-CCSA		
	2000	2001	2002	2003	2004	2005	2006
Total children in placement ≤ 12 months	11,795	11,171	10,950	9,406	9,033	9,464	9,421
Children with two or fewer placements	10,093	9,623	9,627	8,088	8,277	8,501	8,401
Two or fewer placement setting rate	85.6%	86.1%	87.9%	86.0%	91.6%	89.8%	89.2%
Avg. rate pre/post CCSA	86.4%				90.2%		
Counties that meet/exceed standard							
Number	66	73	65	56	75	77	70
Percent	76%	84%	75%	64%	86%	89%	80%
Avg. number pre/post CCSA	65				74		
Avg. percent pre/post CCSA	75%				85%		

Two or fewer placement settings
Minnesota performance against the national standard of 86.7 percent or higher



Section III: Three-year County-level Data CYs 2004-06

Recurrence of Child Abuse/Neglect

For the six-month recurrence rate, a county meets or exceeds the national standard if **6.1 percent or fewer** children had another determined report within six months of the first. For the 12-month recurrence rate, the state performance of 8.4 percent (2004), 9.2 percent (2005) and 7.5 percent (2006) are used as the standard for the respective year.

County	Determined Maltreatment ¹			Another Determined Maltreatment						Recurrence Rate					
				Within Six Months			Within 12 Months			Six Months			12 Months		
	2004	2005	2006	2004	2005	2006	2004	2005	2006	2004	2005	2006	2004	2005	2006
State	4,047	3,971	4,019	205	211	177	340	365	302	5.1%	5.3%	4.4%	8.4%	9.2%	7.5%
Aitkin	12	27	21	0	2	1	0	4	2	0.0%	7.4%	4.8%	0.0%	14.8%	9.5%
Anoka	169	227	220	8	20	6	12	23	14	4.7%	8.8%	2.7%	7.1%	10.1%	6.4%
Becker	72	71	49	8	4	3	11	7	6	11.1%	5.6%	6.1%	15.3%	9.9%	12.2%
Beltrami	33	45	45	3	0	3	3	2	5	9.1%	0.0%	6.7%	9.1%	4.4%	11.1%
Benton	18	26	19	0	1	0	2	3		0.0%	3.8%	0.0%	11.1%	11.5%	0.0%
Big Stone	9	14	6	1	0	0	1	2		11.1%	0.0%	0.0%	11.1%	14.3%	0.0%
Blue Earth	60	41	57	7	1	4	11	1	10	11.7%	2.4%	7.0%	18.3%	2.4%	17.5%
Brown	15	19	27	2	2	2	3	2	4	13.3%	10.5%	7.4%	20.0%	10.5%	14.8%
Carlton	8	13	6	0	0	0	0	1		0.0%	0.0%	0.0%	0.0%	7.7%	0.0%
Carver	52	60	66	1	1	1	1	4	5	1.9%	1.7%	1.5%	1.9%	6.7%	7.6%
Cass	17	8	8	0	0	0	0	0		0.0%	0.0%	0.0%	0.0%	0.0%	0.0%
Chippewa	8	4	6	0	0	0	1	0		0.0%	0.0%	0.0%	12.5%	0.0%	0.0%
Chisago	24	14	20	1	1	0	1	1	2	4.2%	7.1%	0.0%	4.2%	7.1%	10.0%
Clay	45	40	41	3	1	4	6	1	5	6.7%	2.5%	9.8%	13.3%	2.5%	12.2%
Clearwater	3	3	1	0	0	0	0	0		0.0%	0.0%	0.0%	0.0%	0.0%	0.0%
Cook	2	4	3	0	1	0	0	1		0.0%	25.0%	0.0%	0.0%	25.0%	0.0%
Cottonwood	9	32	8	1	1	0	1	3	1	11.1%	3.1%	0.0%	11.1%	9.4%	12.5%
Crow Wing	28	19	28	0	0	0	0	0		0.0%	0.0%	0.0%	0.0%	0.0%	0.0%
Dakota	151	198	232	8	5	13	14	11	21	5.3%	2.5%	5.6%	9.3%	5.6%	9.1%
Dodge	13	17	10	1	3	0	2	3	1	7.7%	17.6%	0.0%	15.4%	17.6%	10.0%
Douglas	46	50	37	4	6	0	9	8		8.7%	12.0%	0.0%	19.6%	16.0%	0.0%
Faribault/Martin	47	60	91	2	1	12	2	10	17	4.3%	1.7%	13.2%	4.3%	16.7%	18.7%
Fillmore	16	9	2	0	0	0	0	0		0.0%	0.0%	0.0%	0.0%	0.0%	0.0%
Freeborn	10	18	56	0	0	0	0	1	1	0.0%	0.0%	0.0%	0.0%	5.6%	1.8%
Goodhue	4	5	16	0	0	0	0	0	1	0.0%	0.0%	0.0%	0.0%	0.0%	6.3%

County	Determined Maltreatment ¹			Another Determined Maltreatment						Recurrence Rate					
	2004	2005	2006	Within Six Months			Within 12 Months			Six Months			12 Months		
	2004	2005	2006	2004	2005	2006	2004	2005	2006	2004	2005	2006	2004	2005	2006
State	4,047	3,971	4,019	205	211	177	340	365	302	5.1%	5.3%	4.4%	8.4%	9.2%	7.5%
Grant	3	1	5	0	0	0	0	0		0.0%	0.0%	0.0%	0.0%	0.0%	0.0%
Hennepin	1,576	1,391	1,099	102	105	50	163	170	85	6.5%	7.5%	4.5%	10.3%	12.2%	7.7%
Houston	4	4	5	0	0	1	0	0	1	0.0%	0.0%	20.0%	0.0%	0.0%	20.0%
Hubbard	10	11	22	0	0	3	0	0	3	0.0%	0.0%	13.6%	0.0%	0.0%	13.6%
Isanti	52	33	49	1	0	3	2	0	3	1.9%	0.0%	6.1%	3.8%	0.0%	6.1%
Itasca	22	28	48	2	3	0	2	3		9.1%	10.7%	0.0%	9.1%	10.7%	0.0%
Jackson	3	5	15	0	0	0	0	1	1	0.0%	0.0%	0.0%	0.0%	20.0%	6.7%
Kanabec	4	6	3	0	0	0	0	0		0.0%	0.0%	0.0%	0.0%	0.0%	0.0%
Kandiyohi	33	59	52	0	5	0	3	6	3	0.0%	8.5%	0.0%	9.1%	10.2%	5.8%
Kittson	0	0	0		0	0		0			0.0%			0.0%	
Koochiching	6	8	2	0	0	0	1	0		0.0%	0.0%	0.0%	16.7%	0.0%	0.0%
Lac qui Parle	3	1	3	0	0	0	0	0		0.0%	0.0%	0.0%	0.0%	0.0%	0.0%
Lake	9	6	14	0	0	0	1	3		0.0%	0.0%	0.0%	11.1%	50.0%	0.0%
Lake of the Woods	2	1	1	0	0	0	0	0		0.0%	0.0%	0.0%	0.0%	0.0%	0.0%
Le Sueur	27	34	25	2	0	0	2	1		7.4%	0.0%	0.0%	7.4%	2.9%	0.0%
Lincoln/Lyon/Murray	11	7	5	1	0	0	1	1	1	9.1%	0.0%	0.0%	9.1%	14.3%	20.0%
McLeod	13	22	30	0	0	1	0	0	7	0.0%	0.0%	3.3%	0.0%	0.0%	23.3%
Mahnomen	17	9	11	2	0	0	2	0		11.8%	0.0%	0.0%	11.8%	0.0%	0.0%
Marshall	1	0	6	0	0	0	0	0		0.0%	0.0%	0.0%	0.0%	0.0%	0.0%
Meeker	2	4	3	0	0	0	0	0		0.0%	0.0%	0.0%	0.0%	0.0%	0.0%
Mille Lacs	24	14	14	0	0	1	0	0	2	0.0%	0.0%	7.1%	0.0%	0.0%	14.3%
Morrison	13	22	40	0	0	0	2	1	1	0.0%	0.0%	0.0%	15.4%	4.5%	2.5%
Mower	26	17	27	3	0	0	4	0		11.5%	0.0%	0.0%	15.4%	0.0%	0.0%
Nicollet	21	17	29	1	1	1	1	1	1	4.8%	5.9%	3.4%	4.8%	5.9%	3.4%
Nobles	11	3	3	0	0	0	0	0		0.0%	0.0%	0.0%	0.0%	0.0%	0.0%
Norman	11	3	1	0	0	0	1	0		0.0%	0.0%	0.0%	9.1%	0.0%	0.0%
Olmsted	94	75	26	6	3	1	11	7	1	6.4%	4.0%	3.8%	11.7%	9.3%	3.8%
Otter Tail	44	49	34	3	2	1	3	3	4	6.8%	4.1%	2.9%	6.8%	6.1%	11.8%
Pennington	6	7	6	0	0	0	0	0		0.0%	0.0%	0.0%	0.0%	0.0%	0.0%
Pine	22	35	43	1	1	0	1	1		4.5%	2.9%	0.0%	4.5%	2.9%	0.0%
Pipestone	12	14	10	0	0	1	0	0	1	0.0%	0.0%	10.0%	0.0%	0.0%	10.0%
Polk	33	10	5	0	0	0	2	0		0.0%	0.0%	0.0%	6.1%	0.0%	0.0%

County	Determined Maltreatment ¹			Another Determined Maltreatment						Recurrence Rate					
	2004	2005	2006	Within Six Months			Within 12 Months			Six Months			12 Months		
	2004	2005	2006	2004	2005	2006	2004	2005	2006	2004	2005	2006	2004	2005	2006
State	4,047	3,971	4,019	205	211	177	340	365	302	5.1%	5.3%	4.4%	8.4%	9.2%	7.5%
Pope	1	5	2	0	0	0	0	0		0.0%	0.0%	0.0%	0.0%	0.0%	0.0%
Ramsey	463	377	464	8	13	15	15	23	24	1.7%	3.4%	3.2%	3.2%	6.1%	5.2%
Red Lake	2	9	1	0	0	0	0	0		0.0%	0.0%	0.0%	0.0%	0.0%	0.0%
Redwood	10	17	5	0	1	0	2	1		0.0%	5.9%	0.0%	20.0%	5.9%	0.0%
Renville	7	5	7	0	0	0	0	0		0.0%	0.0%	0.0%	0.0%	0.0%	0.0%
Rice	67	84	83	7	11	8	10	12	9	10.4%	13.1%	9.6%	14.9%	14.3%	10.8%
Rock	8	2	1	0	0	0	0	0		0.0%	0.0%	0.0%	0.0%	0.0%	0.0%
Roseau	5	3	1	0	0	0	1	0		0.0%	0.0%	0.0%	20.0%	0.0%	0.0%
St. Louis	133	166	214	7	3	8	13	13	13	5.3%	1.8%	3.7%	9.8%	7.8%	6.1%
Scott	71	60	81	1	3	14	3	4	15	1.4%	5.0%	17.3%	4.2%	6.7%	18.5%
Sherburne	12	38	44	0	0	1	0	1	3	0.0%	0.0%	2.3%	0.0%	2.6%	6.8%
Sibley	15	4	8	0	0	0	0	0		0.0%	0.0%	0.0%	0.0%	0.0%	0.0%
Stearns	62	68	77	1	2	5	3	7	5	1.6%	2.9%	6.5%	4.8%	10.3%	6.5%
Steele	24	19	37	2	1	3	2	2	3	8.3%	5.3%	8.1%	8.3%	10.5%	8.1%
Stevens	1	6	10	0	0	2	0	0	2	0.0%	0.0%	20.0%	0.0%	0.0%	20.0%
Swift	18	15	16	1	0	1	1	1	2	5.6%	0.0%	6.3%	5.6%	6.7%	12.5%
Todd	22	17	10	0	0	0	1	0		0.0%	0.0%	0.0%	4.5%	0.0%	0.0%
Traverse	4	10	4	0	0	0	0	3		0.0%	0.0%	0.0%	0.0%	30.0%	0.0%
Wabasha	5	12	6	0	0	0	0	2		0.0%	0.0%	0.0%	0.0%	16.7%	0.0%
Wadena	8	12	6	0	5	0	0	5		0.0%	41.7%	0.0%	0.0%	41.7%	0.0%
Waseca	6	6	18	0	0	1	0	0	1	0.0%	0.0%	5.6%	0.0%	0.0%	5.6%
Washington	58	41	93	1	1	6	2	2	7	1.7%	2.4%	6.5%	3.4%	4.9%	7.5%
Watsonwan	3	3	2	0	1	0	0	1		0.0%	33.3%	0.0%	0.0%	33.3%	0.0%
Wilkin	0	0	0	0	0	0	0	0			0.0%			0.0%	
Winona	20	15	29	1	0	0	1	1	4	5.0%	0.0%	0.0%	5.0%	6.7%	13.8%
Wright	31	55	87	2	0	1	4	1	5	6.5%	0.0%	1.1%	12.9%	1.8%	5.7%
Yellow Medicine	5	2	2	0	0	0	0	0		0.0%	0.0%	0.0%	0.0%	0.0%	0.0%

¹ Children with a determined maltreatment for the respective years were for the periods below:
2004 (Jan 1-Jun. 30, 2004); 2005 (Jul. 1-Dec. 31, 2004); 2006 (Jul.1-Dec. 31, 2005)

Child Maltreatment by Foster Parent

A county meets or exceeds the national standard if **0.57 percent or fewer** children experienced determined maltreatment by a foster parent.

County	Children in Out-of-home Placement			Subject of Determined Maltreatment			Determined Maltreatment rate		
	2004	2005	2006	2004	2005	2006	2004	2005	2006
State	14,359	14,723	14,770	24	77	39	0.17%	0.52%	0.26%
Aitkin	76	59	70	0	0	1	0.00%	0.00%	1.43%
Anoka	856	969	870	2	6	3	0.23%	0.62%	0.34%
Becker	169	218	249	0	0	0	0.00%	0.00%	0.00%
Beltrami	178	191	244	0	0	0	0.00%	0.00%	0.00%
Benton	111	88	85	0	0	0	0.00%	0.00%	0.00%
Big Stone	24	21	15	0	0	0	0.00%	0.00%	0.00%
Blue Earth	157	157	167	0	0	0	0.00%	0.00%	0.00%
Brown	72	78	92	0	0	0	0.00%	0.00%	0.00%
Carlton	130	144	151	0	0	0	0.00%	0.00%	0.00%
Carver	150	172	179	0	4	0	0.00%	2.33%	0.00%
Cass	166	188	171	0	0	0	0.00%	0.00%	0.00%
Chippewa	17	22	22	0	0	0	0.00%	0.00%	0.00%
Chisago	149	159	132	0	0	0	0.00%	0.00%	0.00%
Clay	176	176	181	0	3	1	0.00%	1.70%	0.55%
Clearwater	28	24	21	0	1	0	0.00%	4.17%	0.00%
Cook	11	16	15	0	0	0	0.00%	0.00%	0.00%
Cottonwood	56	55	53	0	0	0	0.00%	0.00%	0.00%
Crow Wing	228	249	204	0	0	1	0.00%	0.00%	0.49%
Dakota	400	494	509	1	2	0	0.25%	0.40%	0.00%
Dodge	58	42	28	0	0	0	0.00%	0.00%	0.00%
Douglas	75	89	99	0	0	0	0.00%	0.00%	0.00%
Faribault/Martin	123	124	97	3	4	0	2.44%	3.23%	0.00%
Fillmore	33	27	28	0	0	0	0.00%	0.00%	0.00%
Freeborn	112	147	139	0	0	1	0.00%	0.00%	0.72%
Goodhue	111	100	106	0	3	1	0.00%	3.00%	0.94%
Grant	9	17	13	0	0	0	0.00%	0.00%	0.00%
Hennepin	3,612	3,546	3,556	6	16	10	0.17%	0.45%	0.28%
Houston	51	54	48	0	2	0	0.00%	3.70%	0.00%
Hubbard	93	76	77	0	0	1	0.00%	0.00%	1.30%
Isanti	113	139	123	0	0	0	0.00%	0.00%	0.00%
Itasca	281	316	235	0	1	1	0.00%	0.32%	0.43%

County	Children in Out-of-home Placement			Subject of Determined Maltreatment			Determined Maltreatment rate		
	2004	2005	2006	2004	2005	2006	2004	2005	2006
State	14,359	14,723	14,770	24	77	39	0.17%	0.52%	0.26%
Jackson	42	43	49	0	0	0	0.00%	0.00%	0.00%
Kanabec	48	43	49	0	0	0	0.00%	0.00%	0.00%
Kandiyohi	128	149	173	0	0	2	0.00%	0.00%	1.16%
Kittson	6	6	13	0	0	0	0.00%	0.00%	0.00%
Koochiching	69	75	80	0	0	0	0.00%	0.00%	0.00%
Lac qui Parle	13	16	19	0	0	0	0.00%	0.00%	0.00%
Lake	53	52	46	0	0	0	0.00%	0.00%	0.00%
Lake of the Woods	10	6	3	0	0	0	0.00%	0.00%	0.00%
Le Sueur	64	64	56	2	0	0	3.13%	0.00%	0.00%
Lincoln/Lyon/Murray	99	106	100	0	0	1	0.00%	0.00%	1.00%
McLeod	72	73	117	0	6	1	0.00%	8.22%	0.85%
Mahnomen	45	46	61	0	0	0	0.00%	0.00%	0.00%
Marshall	25	24	22	0	0	0	0.00%	0.00%	0.00%
Meeker	44	32	53	0	0	0	0.00%	0.00%	0.00%
Mille Lacs	106	69	88	0	0	0	0.00%	0.00%	0.00%
Morrison	87	106	125	0	0	0	0.00%	0.00%	0.00%
Mower	112	98	109	0	0	0	0.00%	0.00%	0.00%
Nicollet	71	60	65	0	0	0	0.00%	0.00%	0.00%
Nobles	33	44	38	0	0	0	0.00%	0.00%	0.00%
Norman	25	25	21	0	0	0	0.00%	0.00%	0.00%
Olmsted	188	194	192	1	0	1	0.53%	0.00%	0.52%
Otter Tail	128	117	110	1	2	0	0.78%	1.71%	0.00%
Pennington	65	63	69	0	0	0	0.00%	0.00%	0.00%
Pine	131	131	105	0	0	0	0.00%	0.00%	0.00%
Pipestone	41	45	37	0	0	0	0.00%	0.00%	0.00%
Polk	115	117	113	0	0	0	0.00%	0.00%	0.00%
Pope	13	14	26	0	0	0	0.00%	0.00%	0.00%
Ramsey	2,031	1,906	1,967	4	15	2	0.20%	0.79%	0.10%
Red Lake	11	8	14	0	0	0	0.00%	0.00%	0.00%
Redwood	54	64	63	0	1	1	0.00%	1.56%	1.59%
Renville	47	46	31	0	0	0	0.00%	0.00%	0.00%
Rice	81	89	97	0	0	0	0.00%	0.00%	0.00%
Rock	24	36	36	0	0	0	0.00%	0.00%	0.00%
Roseau	45	36	40	0	0	0	0.00%	0.00%	0.00%
St. Louis	633	699	708	1	2	3	0.16%	0.29%	0.42%
Scott	161	182	172	0	1	1	0.00%	0.55%	0.58%

County	Children in Out-of-home Placement			Subject of Determined Maltreatment			Determined Maltreatment rate		
	2004	2005	2006	2004	2005	2006	2004	2005	2006
State	14,359	14,723	14,770	24	77	39	0.17%	0.52%	0.26%
Sherburne	155	142	146	1	0	0	0.65%	0.00%	0.00%
Sibley	27	28	31	0	0	0	0.00%	0.00%	0.00%
Stearns	267	335	352	0	5	1	0.00%	1.49%	0.28%
Steele	64	59	64	0	0	0	0.00%	0.00%	0.00%
Stevens	12	22	19	0	0	0	0.00%	0.00%	0.00%
Swift	14	36	29	0	0	1	0.00%	0.00%	3.45%
Todd	76	66	76	0	1	0	0.00%	1.52%	0.00%
Traverse	11	17	2	0	0	0	0.00%	0.00%	0.00%
Wabasha	86	75	71	1	0	0	1.16%	0.00%	0.00%
Wadena	56	65	64	0	0	0	0.00%	0.00%	0.00%
Waseca	56	63	59	0	0	1	0.00%	0.00%	1.69%
Washington	336	286	320	0	1	3	0.00%	0.35%	0.94%
Watsonwan	25	25	35	0	0	0	0.00%	0.00%	0.00%
Wilkin	32	29	29	0	0	0	0.00%	0.00%	0.00%
Winona	111	100	95	1	1	0	0.90%	1.00%	0.00%
Wright	246	303	297	0	0	1	0.00%	0.00%	0.34%
Yellow Medicine	40	31	35	0	0	0	0.00%	0.00%	0.00%

Re-entered Placement within 12 Months

A county meets or exceeds the national standard if **8.6 percent or fewer** children re-entered foster care within 12 months of a prior out-of-home episode.

County	Entered Placement			Re-entered Placement			Re-entry Rate		
	2004	2005	2006	2004	2005	2006	2004	2005	2006
State	8,560	8,211	8,057	1,941	1,583	1,538	22.7%	19.3%	19.1%
Aitkin	43	26	40	11	3	3	25.6%	11.5%	7.5%
Anoka	549	576	471	90	105	91	16.4%	18.2%	19.3%
Becker	93	125	121	16	18	15	17.2%	14.4%	12.4%
Beltrami	89	116	123	6	16	16	6.7%	13.8%	13.0%
Benton	75	40	48	28	10	3	37.3%	25.0%	6.3%
Big Stone	17	14	6	5	5	4	29.4%	35.7%	66.7%
Blue Earth	99	95	99	28	28	17	28.3%	29.5%	17.2%
Brown	43	43	62	10	11	15	23.3%	25.6%	24.2%
Carlton	54	79	67	4	16	12	7.4%	20.3%	17.9%
Carver	71	108	116	10	15	22	14.1%	13.9%	19.0%
Cass	110	125	94	29	28	30	26.4%	22.4%	31.9%
Chippewa	4	13	9	1	0	1	25.0%	0.0%	11.1%
Chisago	88	94	63	20	16	15	22.7%	17.0%	23.8%
Clay	97	80	89	21	12	15	21.6%	15.0%	16.9%
Clearwater	15	9	14	7	1	3	46.7%	11.1%	21.4%
Cook	8	10	11	1	3	4	12.5%	30.0%	36.4%
Cottonwood	35	37	21	6	10	1	17.1%	27.0%	4.8%
Crow Wing	124	126	86	32	22	18	25.8%	17.5%	20.9%
Dakota	217	299	302	46	59	62	21.2%	19.7%	20.5%
Dodge	37	12	14	11	1	6	29.7%	8.3%	42.9%
Douglas	48	67	53	7	16	11	14.6%	23.9%	20.8%
Faribault/Martin	83	86	52	31	15	14	37.3%	17.4%	26.9%
Fillmore	17	11	13	7	0	4	41.2%	0.0%	30.8%
Freeborn	64	89	73	16	20	16	25.0%	22.5%	21.9%

County	Entered Placement			Re-entered Placement			Re-entry Rate		
	2004	2005	2006	2004	2005	2006	2004	2005	2006
State	8,560	8,211	8,057	1,941	1,583	1,538	22.7%	19.3%	19.1%
Goodhue	76	52	52	19	2	9	25.0%	3.8%	17.3%
Grant	7	10	4	0	0	-	0.0%	0.0%	0.0%
Hennepin	2,074	1,874	1,889	376	322	314	18.1%	17.2%	16.6%
Houston	25	29	21	8	5	3	32.0%	17.2%	14.3%
Hubbard	76	40	45	23	14	10	30.3%	35.0%	22.2%
Isanti	64	81	64	6	12	10	9.4%	14.8%	15.6%
Itasca	189	199	113	65	58	44	34.4%	29.1%	38.9%
Jackson	20	25	27	4	3	7	20.0%	12.0%	25.9%
Kanabec	34	27	28	11	2	7	32.4%	7.4%	25.0%
Kandiyohi	79	76	104	20	11	25	25.3%	14.5%	24.0%
Kittson	4	5	10	1	2	-	25.0%	40.0%	0.0%
Koochiching	47	42	53	16	11	15	34.0%	26.2%	28.3%
Lac qui Parle	10	11	12	2	0	2	20.0%	0.0%	16.7%
Lake	30	24	17	4	3	2	13.3%	12.5%	11.8%
Lake of the Woods	7	4	3	1	1	1	14.3%	25.0%	33.3%
Le Sueur	34	24	15	11	2	3	32.4%	8.3%	20.0%
Lincoln/Lyon/Murray	60	64	52	25	20	14	41.7%	31.3%	26.9%
McLeod	34	33	73	6	5	5	17.6%	15.2%	6.8%
Mahnomen	29	33	46	10	5	8	34.5%	15.2%	17.4%
Marshall	18	15	11	5	1	4	27.8%	6.7%	36.4%
Meeker	25	15	39	6	3	6	24.0%	20.0%	15.4%
Mille Lacs	74	36	54	27	9	6	36.5%	25.0%	11.1%
Morrison	64	64	68	15	6	9	23.4%	9.4%	13.2%
Mower	66	58	62	19	15	9	28.8%	25.9%	14.5%
Nicollet	53	32	39	11	5	9	20.8%	15.6%	23.1%
Nobles	29	31	20	6	8	9	20.7%	25.8%	45.0%
Norman	20	16	13	9	3	5	45.0%	18.8%	38.5%
Olmsted	114	96	95	18	12	15	15.8%	12.5%	15.8%
Otter Tail	81	55	67	10	7	11	12.3%	12.7%	16.4%
Pennington	41	28	33	14	5	9	34.1%	17.9%	27.3%
Pine	79	76	58	21	15	6	26.6%	19.7%	10.3%

County	Entered Placement			Re-entered Placement			Re-entry Rate		
	2004	2005	2006	2004	2005	2006	2004	2005	2006
State	8,560	8,211	8,057	1,941	1,583	1,538	22.7%	19.3%	19.1%
Pipestone	31	21	19	10	5	1	32.3%	23.8%	5.3%
Polk	72	69	70	22	19	19	30.6%	27.5%	27.1%
Pope	7	5	17	0	2	5	0.0%	40.0%	29.4%
Ramsey	1,149	1,018	1,118	295	225	234	25.7%	22.1%	20.9%
Red Lake	7	5	13	2	1	3	28.6%	20.0%	23.1%
Redwood	30	37	29	6	2	6	20.0%	5.4%	20.7%
Renville	34	25	21	8	4	2	23.5%	16.0%	9.5%
Rice	39	49	34	5	3	4	12.8%	6.1%	11.8%
Rock	12	21	21	2	3	2	16.7%	14.3%	9.5%
Roseau	33	22	30	6	4	5	18.2%	18.2%	16.7%
St. Louis	305	380	354	66	62	75	21.6%	16.3%	21.2%
Scott	119	104	96	27	12	20	22.7%	11.5%	20.8%
Sherburne	112	82	82	19	11	10	17.0%	13.4%	12.2%
Sibley	16	20	19	5	5	4	31.3%	25.0%	21.1%
Stearns	181	199	194	45	33	29	24.9%	16.6%	14.9%
Steele	45	27	35	16	4	5	35.6%	14.8%	14.3%
Stevens	5	15	7	1	6	1	20.0%	40.0%	14.3%
Swift	7	29	11	2	12	5	28.6%	41.4%	45.5%
Todd	38	21	44	3	3	3	7.9%	14.3%	6.8%
Traverse	6	10	2	0	1	2	0.0%	10.0%	100.0%
Wabasha	62	43	47	15	14	14	24.2%	32.6%	29.8%
Wadena	24	39	36	5	10	7	20.8%	25.6%	19.4%
Waseca	34	40	34	14	9	8	41.2%	22.5%	23.5%
Washington	233	174	207	71	55	52	30.5%	31.6%	25.1%
Watsonwan	19	11	22	6	5	3	31.6%	45.5%	13.6%
Wilkin	20	14	10	1	8	2	5.0%	57.1%	20.0%
Winona	90	73	59	40	32	19	44.4%	43.8%	32.2%
Wright	169	192	164	30	33	22	17.8%	17.2%	13.4%
Yellow Medicine	18	11	28	7	3	1	38.9%	27.3%	3.6%

Measure 5: Reunified within 12 Months

A county meets or exceeds the national standard if **76.2 percent or more** children were reunified in less than 12 months from the time of the latest removal from their home.

County	Reunified			Reunified within 12 Months			12-month Reunification Rate		
	2004	2005	2006	2004	2005	2006	2004	2005	2006
State	4,863	5,084	5,085	4,468	4,648	4,597	91.9%	91.4%	90.4%
Aitkin	29	19	18	21	16	17	72.4%	84.2%	94.4%
Anoka	324	421	370	300	392	346	92.6%	93.1%	93.5%
Becker	45	44	67	42	42	54	93.3%	95.5%	80.6%
Beltrami	41	39	59	32	37	48	78.0%	94.9%	81.4%
Benton	33	30	31	31	27	30	93.9%	90.0%	96.8%
Big Stone	13	9	2	13	9	2	100.0%	100.0%	100.0%
Blue Earth	67	52	61	64	47	55	95.5%	90.4%	90.2%
Brown	23	32	34	20	29	34	87.0%	90.6%	100.0%
Carlton	31	41	39	26	37	33	83.9%	90.2%	84.6%
Carver	57	74	86	51	72	83	89.5%	97.3%	96.5%
Cass	66	68	55	62	64	47	93.9%	94.1%	85.5%
Chippewa	2	2	5	1	2	5	50.0%	100.0%	100.0%
Chisago	53	70	42	51	64	41	96.2%	91.4%	97.6%
Clay	49	41	48	41	36	41	83.7%	87.8%	85.4%
Clearwater	10	8	8	7	7	7	70.0%	87.5%	87.5%
Cook	4	9	4	4	9	4	100.0%	100.0%	100.0%
Cottonwood	23	16	22	22	14	20	95.7%	87.5%	90.9%
Crow Wing	63	63	44	58	57	36	92.1%	90.5%	81.8%
Dakota	117	186	180	113	180	170	96.6%	96.8%	94.4%
Dodge	18	11	7	17	8	7	94.4%	72.7%	100.0%
Douglas	26	28	43	25	27	39	96.2%	96.4%	90.7%
Faribault/Martin	53	59	41	49	55	38	92.5%	93.2%	92.7%
Fillmore	11	5	4	10	5	2	90.9%	100.0%	50.0%
Freeborn	34	55	64	32	50	60	94.1%	90.9%	93.8%

County	Reunified			Reunified within 12 Months			12-month Reunification Rate		
	2004	2005	2006	2004	2005	2006	2004	2005	2006
State	4,863	5,084	5,085	4,468	4,648	4,597	91.9%	91.4%	90.4%
Goodhue	36	30	22	34	28	19	94.4%	93.3%	86.4%
Grant	2	7	7	2	6	7	100.0%	85.7%	100.0%
Hennepin	1,102	1,134	1,102	986	1,009	955	89.5%	89.0%	86.7%
Houston	19	18	14	17	13	13	89.5%	72.2%	92.9%
Hubbard	45	29	25	43	28	22	95.6%	96.6%	88.0%
Isanti	32	47	43	31	45	34	96.9%	95.7%	79.1%
Itasca	116	121	94	100	112	83	86.2%	92.6%	88.3%
Jackson	13	10	15	13	10	11	100.0%	100.0%	73.3%
Kanabec	23	13	16	22	10	15	95.7%	76.9%	93.8%
Kandiyohi	39	50	59	37	43	54	94.9%	86.0%	91.5%
Kittson	4	3	9	4	3	9	100.0%	100.0%	100.0%
Koochiching	25	30	25	25	29	25	100.0%	96.7%	100.0%
Lac qui Parle	7	9	3	6	9	3	85.7%	100.0%	100.0%
Lake	13	16	16	9	16	16	69.2%	100.0%	100.0%
Lake of the Woods	7	4	1	7	4	1	100.0%	100.0%	100.0%
Le Sueur	17	13	13	15	10	9	88.2%	76.9%	69.2%
Lincoln/Lyon/Murray	31	37	34	29	35	32	93.5%	94.6%	94.1%
McLeod	17	18	32	14	15	30	82.4%	83.3%	93.8%
Mahnomen	18	18	24	18	16	24	100.0%	88.9%	100.0%
Marshall	8	8	5	8	7	5	100.0%	87.5%	100.0%
Meeker	15	9	13	12	7	12	80.0%	77.8%	92.3%
Mille Lacs	55	25	30	54	21	30	98.2%	84.0%	100.0%
Morrison	29	37	35	28	36	31	96.6%	97.3%	88.6%
Mower	52	35	49	47	35	49	90.4%	100.0%	100.0%
Nicollet	31	22	29	31	20	28	100.0%	90.9%	96.6%
Nobles	10	20	18	10	19	16	100.0%	95.0%	88.9%
Norman	8	12	8	8	12	7	100.0%	100.0%	87.5%
Olmsted	58	58	60	49	50	54	84.5%	86.2%	90.0%
Otter Tail	52	42	34	46	35	29	88.5%	83.3%	85.3%
Pennington	16	15	14	16	15	12	100.0%	100.0%	85.7%
Pine	45	51	29	41	49	22	91.1%	96.1%	75.9%
Pipestone	13	21	14	13	18	11	100.0%	85.7%	78.6%

County	Reunified			Reunified within 12 Months			12-month Reunification Rate		
	2004	2005	2006	2004	2005	2006	2004	2005	2006
State	4,863	5,084	5,085	4,468	4,648	4,597	91.9%	91.4%	90.4%
Polk	50	51	26	46	49	21	92.0%	96.1%	80.8%
Pope	6	5	11	6	3	10	100.0%	60.0%	90.9%
Ramsey	706	649	755	656	594	690	92.9%	91.5%	91.4%
Red Lake	5	5	3	5	5	3	100.0%	100.0%	100.0%
Redwood	12	19	16	9	18	15	75.0%	94.7%	93.8%
Renville	20	24	15	17	22	12	85.0%	91.7%	80.0%
Rice	14	14	16	13	12	16	92.9%	85.7%	100.0%
Rock	4	16	15	4	14	11	100.0%	87.5%	73.3%
Roseau	21	22	15	21	20	15	100.0%	90.9%	100.0%
St. Louis	160	202	189	143	187	164	89.4%	92.6%	86.8%
Scott	68	74	69	67	71	67	98.5%	95.9%	97.1%
Sherburne	56	48	55	55	44	52	98.2%	91.7%	94.5%
Sibley	16	16	11	15	13	11	93.8%	81.3%	100.0%
Stearns	96	130	133	93	120	127	96.9%	92.3%	95.5%
Steele	24	19	12	24	19	12	100.0%	100.0%	100.0%
Stevens	2	5	10	2	4	10	100.0%	80.0%	100.0%
Swift	3	14	15	3	14	14	100.0%	100.0%	93.3%
Todd	18	17	18	15	14	16	83.3%	82.4%	88.9%
Traverse	2	11	1	1	9	1	50.0%	81.8%	100.0%
Wabasha	34	38	49	34	33	47	100.0%	86.8%	95.9%
Wadena	8	18	21	6	18	19	75.0%	100.0%	90.5%
Waseca	21	19	25	20	19	24	95.2%	100.0%	96.0%
Washington	171	119	164	165	106	155	96.5%	89.1%	94.5%
Watonwan	8	6	8	8	5	7	100.0%	83.3%	87.5%
Wilkin	14	4	6	13	1	4	92.9%	25.0%	66.7%
Winona	64	58	54	60	57	51	93.8%	98.3%	94.4%
Wright	98	129	129	89	119	119	90.8%	92.2%	92.2%
Yellow Medicine	12	8	18	11	7	17	91.7%	87.5%	94.4%

Children Adopted within 24 Months of Last Removal from Home

A county meets or exceeds the national standard if **32.0 percent or more** children exited out-of-home placement to adoption in less than 24 months from the time of the latest removal from their home.

County	Adopted			Adopted within 24 Months			Adoption Rate within 24 Months		
	2004	2005	2006	2004	2005	2006	2004	2005	2006
State	554	751	607	224	353	296	40.4%	47.0%	48.8%
Aitkin	2	4	7	0	1	6	0.0%	25.0%	85.7%
Anoka	36	66	42	20	33	18	55.6%	50.0%	42.9%
Becker	2	11	4	2	6	3	100.0%	54.5%	75.0%
Beltrami	8	1	0	1	0	0	12.5%	0.0%	
Benton	7	5	4	7	3	1	100.0%	60.0%	25.0%
Big Stone	0	0	2	0	0	2			100.0%
Blue Earth	9	8	3	4	4	0	44.4%	50.0%	0.0%
Brown	0	8	3	0	6	2		75.0%	66.7%
Carlton	5	2	4	1	1	0	20.0%	50.0%	0.0%
Carver	7	8	5	6	6	5	85.7%	75.0%	100.0%
Cass	0	1	0	0	0	0		0.0%	
Chippewa	2	1	1	2	1	1	100.0%	100.0%	100.0%
Chisago	13	5	9	6	2	0	46.2%	40.0%	0.0%
Clay	5	10	19	4	4	15	80.0%	40.0%	78.9%
Clearwater	0	0	0	0	0	0			
Cook	0	0	0	0	0	0			
Cottonwood	2	0	0	1	0	0	50.0%		
Crow Wing	14	30	15	9	25	13	64.3%	83.3%	86.7%
Dakota	38	22	24	13	14	8	34.2%	63.6%	33.3%
Dodge	1	8	2	1	6	2	100.0%	75.0%	100.0%
Douglas	0	0	3	0	0	1			33.3%
Faribault/Martin	3	4	1	2	4	1	66.7%	100.0%	100.0%
Fillmore	0	0	0	0	0	0			
Freeborn	5	6	7	0	2	4	0.0%	33.3%	57.1%
Goodhue	3	9	2	1	6	1	33.3%	66.7%	50.0%
Grant	0	0	1	0	0	0			0.0%
Hennepin	136	186	171	55	75	73	40.4%	40.3%	42.7%

County	Adopted			Adopted within 24 Months			Adoption Rate within 24 Months		
	2004	2005	2006	2004	2005	2006	2004	2005	2006
State	554	751	607	224	353	296	40.4%	47.0%	48.8%
Houston	2	0	0	1	0	0	50.0%		
Hubbard	0	2	2	0	0	1		0.0%	50.0%
Isanti	11	13	4	4	0	0	36.4%	0.0%	0.0%
Itasca	4	8	6	0	0	6	0.0%	0.0%	100.0%
Jackson	0	4	0	0	3	0		75.0%	
Kanabec	0	1	1	0	0	0		0.0%	0.0%
Kandiyohi	3	9	14	3	4	0	100.0%	44.4%	0.0%
Kittson	0	0	0	0	0	0			
Koochiching	0	5	0	0	4	0		80.0%	
Lac qui Parle	1	0	0	1	0	0	100.0%		
Lake	5	3	1	2	0	1	40.0%	0.0%	100.0%
Lake of the Woods	1	1	0	0	0	0	0.0%	0.0%	
Le Sueur	2	4	2	0	2	0	0.0%	50.0%	0.0%
Lincoln/Lyon/Murray	10	5	2	5	5	0	50.0%	100.0%	0.0%
McLeod	9	6	16	4	3	6	44.4%	50.0%	37.5%
Mahnomen	4	4	0	0	1	0	0.0%	25.0%	
Marshall	0	0	0	0	0	0			
Meeker	0	1	1	0	1	1		100.0%	100.0%
Mille Lacs	1	1	1	0	1	1	0.0%	100.0%	100.0%
Morrison	6	3	5	1	1	2	16.7%	33.3%	40.0%
Mower	5	3	0	5	2	0	100.0%	66.7%	
Nicollet	0	5	4	0	4	2		80.0%	50.0%
Nobles	1	0	0	0	0	0	0.0%		
Norman	4	0	2	0	0	0	0.0%		0.0%
Olmsted	14	22	17	11	17	9	78.6%	77.3%	52.9%
Otter Tail	3	9	6	2	3	5	66.7%	33.3%	83.3%
Pennington	2	3	4	0	1	1	0.0%	33.3%	25.0%
Pine	5	3	0	2	2	0	40.0%	66.7%	
Pipestone	0	2	1	0	2	1		100.0%	100.0%
Polk	3	6	4	0	0	0	0.0%	0.0%	0.0%
Pope	0	0	2	0	0	2			100.0%
Ramsey	74	110	58	12	34	30	16.2%	30.9%	51.7%
Red Lake	0	1	0	0	0	0		0.0%	

County	Adopted			Adopted within 24 Months			Adoption Rate within 24 Months		
	2004	2005	2006	2004	2005	2006	2004	2005	2006
State	554	751	607	224	353	296	40.4%	47.0%	48.8%
Redwood	2	0	8	2	0	8	100.0%		100.0%
Renville	0	0	0	0	0	0			
Rice	2	4	6	2	4	6	100.0%	100.0%	100.0%
Rock	2	3	2	1	3	1	50.0%	100.0%	50.0%
Roseau	0	1	0	0	1	0		100.0%	
St. Louis	23	37	24	6	13	11	26.1%	35.1%	45.8%
Scott	7	11	17	6	6	10	85.7%	54.5%	58.8%
Sherburne	4	7	7	2	7	4	50.0%	100.0%	57.1%
Sibley	1	0	0	1	0	0	100.0%		
Stearns	3	8	17	0	2	5	0.0%	25.0%	29.4%
Steele	2	5	8	1	4	6	50.0%	80.0%	75.0%
Stevens	0	3	1	0	3	0		100.0%	0.0%
Swift	1	0	0	0	0	0	0.0%		
Todd	5	10	4	5	1	3	100.0%	10.0%	75.0%
Traverse	0	0	0	0	0	0			
Wabasha	1	3	1	1	2	0	100.0%	66.7%	0.0%
Wadena	6	8	0	3	8	0	50.0%	100.0%	
Waseca	2	0	0	1	0	0	50.0%		
Washington	18	14	15	4	10	12	22.2%	71.4%	80.0%
Watonwan	0	0	0	0	0	0			
Wilkin	0	1	1	0	0	1		0.0%	100.0%
Winona	1	0	1	0	0	1	0.0%		100.0%
Wright	6	4	13	1	0	4	16.7%	0.0%	30.8%
Yellow Medicine	0	3	0	0	0	0		0.0%	

Transfer of Legal Custody within 12 Months

A county meets or exceeds the standard when the county performance is above the state average for that calendar year. The state average is based on the children that exited out-of-home placement to a permanent transfer of legal and physical custody to a relative in less than 12 months from the time of the latest removal from the home.

County	Transfer of Legal Custody to a Relative			Transfer of Legal Custody to a Relative within 12 Months			Rate of Transfer within 12 Months		
	2004	2005	2006	2004	2005	2006	2004	2005	2006
State	486	519	544	344	358	348	70.8%	69.0%	64.0%
Aitkin	1	2	3	1	0	2	100.0%	0.0%	66.7%
Anoka	13	22	13	11	16	7	84.6%	72.7%	53.8%
Becker	4	21	19	2	17	14	50.0%	81.0%	73.7%
Beltrami	16	24	24	13	14	13	81.3%	58.3%	54.2%
Benton	6	3	4	5	0	2	83.3%	0.0%	50.0%
Big Stone	0	2			2			100.0%	
Blue Earth	1	4	2	0	4	0	0.0%	100.0%	0.0%
Brown	1	1	2	0	1	2	0.0%	100.0%	100.0%
Carlton	5		18	5		10	100.0%		55.6%
Carver	12	9	9	12	5	8	100.0%	55.6%	88.9%
Cass	16	16	20	6	10	7	37.5%	62.5%	35.0%
Chippewa	2	3		1	3		50.0%	100.0%	
Chisago	7		5	7		5	100.0%		100.0%
Clay	0	14	1		11	0		78.6%	0.0%
Clearwater	0	1	3		1	3		100.0%	100.0%
Cook	0	3	1		3	0		100.0%	0.0%
Cottonwood	3	2		3	2		100.0%	100.0%	
Crow Wing	3	7	8	1	4	6	33.3%	57.1%	75.0%
Dakota	1	20	17	1	18	12	100.0%	90.0%	70.6%
Dodge	3	3	2	1	3	1	33.3%	100.0%	50.0%
Douglas	6	4	4	5	2	1	83.3%	50.0%	25.0%
Faribault/Martin	6	3	3	6	3	2	100.0%	100.0%	66.7%
Fillmore	3			3			100.0%		
Freeborn	1	3	2	1	3	2	100.0%	100.0%	100.0%
Goodhue	3			0			0.0%		

County	Transfer of Legal Custody to a Relative			Transfer of Legal Custody to a Relative within 12 Months			Rate of Transfer within 12 Months		
	2004	2005	2006	2004	2005	2006	2004	2005	2006
State	486	519	544	344	358	348	70.8%	69.0%	64.0%
Grant	0								
Hennepin	164	139	123	115	92	70	70.1%	66.2%	56.9%
Houston	4	3	2	1	3	2	25.0%	100.0%	100.0%
Hubbard	2	4	2	1	1	2	50.0%	25.0%	100.0%
Isanti	2	12	11	0	10	10	0.0%	83.3%	90.9%
Itasca	16	21	16	12	12	8	75.0%	57.1%	50.0%
Jackson	0	1	1		1	1		100.0%	100.0%
Kanabec	2	1	6	2	0	6	100.0%	0.0%	100.0%
Kandiyohi	6	5	7	5	3	4	83.3%	60.0%	57.1%
Kittson									
Koochiching	3		1	2		1	66.7%		100.0%
Lac qui Parle	0								
Lake	0		1			0			0.0%
Lake of the Woods	0								
Le Sueur	0	2	1		2	1		100.0%	100.0%
Lincoln/Lyon/Murray	1	3	2	1	3	1	100.0%	100.0%	50.0%
McLeod	1	2	1	1	2	1	100.0%	100.0%	100.0%
Mahnomen	3		6	2		4	66.7%		66.7%
Marshall	4			3			75.0%		
Meeker	1	4	1	1	4	1	100.0%	100.0%	100.0%
Mille Lacs	4	2	10	4	2	10	100.0%	100.0%	100.0%
Morrison	0	2	4		2	2		100.0%	50.0%
Mower	3	3	6	2	3	6	66.7%	100.0%	100.0%
Nicollet	1		4	1		4	100.0%		100.0%
Nobles	1	2	2	1	2	2	100.0%	100.0%	100.0%
Norman	0	1			1			100.0%	
Olmsted	2	1		1	0		50.0%	0.0%	
Otter Tail	0	11	2		7	1		63.6%	50.0%
Pennington	1	1	3	1	1	2	100.0%	100.0%	66.7%
Pine	10	15		7	9		70.0%	60.0%	
Pipestone	1	2	2	1	0	2	100.0%	0.0%	100.0%
Polk	0		6			5			83.3%

County	Transfer of Legal Custody to a Relative			Transfer of Legal Custody to a Relative within 12 Months			Rate of Transfer within 12 Months		
	2004	2005	2006	2004	2005	2006	2004	2005	2006
State	486	519	544	344	358	348	70.8%	69.0%	64.0%
Pope	0								
Ramsey	60	23	40	40	12	16	66.7%	52.2%	40.0%
Red Lake	0								
Redwood	3	2	4	0	2	4	0.0%	100.0%	100.0%
Renville	0	7			7			100.0%	
Rice	4	3	6	3	2	3	75.0%	66.7%	50.0%
Rock	2			1			50.0%		
Roseau	0								
St. Louis	32	27	48	21	15	37	65.6%	55.6%	77.1%
Scott	2	7	17	2	5	12	100.0%	71.4%	70.6%
Sherburne	14	6	8	12	6	5	85.7%	100.0%	62.5%
Sibley	0		3			2			66.7%
Stearns	2	8	11	2	6	4	100.0%	75.0%	36.4%
Steele	0	3	4		3	4		100.0%	100.0%
Stevens	0	1	3		1	3		100.0%	100.0%
Swift	0	1	2		1	2		100.0%	100.0%
Todd	0								
Traverse	1			0			0.0%		
Wabasha	4	2		3	2		75.0%	100.0%	
Wadena	3	3	1	3	0	1	100.0%	0.0%	100.0%
Waseca	3	3	2	2	3	2	66.7%	100.0%	100.0%
Washington	5	6	3	5	5	2	100.0%	83.3%	66.7%
Watonwan	0								
Wilkin	0		2			0			0.0%
Winona	0	1	2		1	1		100.0%	50.0%
Wright	2	6	6	1	2	6	50.0%	33.3%	100.0%
Yellow Medicine	4	6	2	1	3	1	25.0%	50.0%	50.0%

Two or Fewer Placement Settings

A county meets or exceeds the national standard if **86.7 percent or more** children had no more than two placement settings.

County	Children in Placement Less than 12 Months			Had Two or Fewer Placement Settings			Rate of Two or Few Placement Settings		
	2004	2005	2006	2004	2005	2006	2004	2005	2006
State	9,033	9,464	9,421	8,277	8,501	8,401	91.6%	89.8%	89.2%
Aitkin	44	28	43	34	21	35	77.3%	75.0%	81.4%
Anoka	563	656	551	520	593	506	92.4%	90.4%	91.8%
Becker	103	147	160	94	118	123	91.3%	80.3%	76.9%
Beltrami	103	145	152	92	128	142	89.3%	88.3%	93.4%
Benton	78	51	59	70	50	57	89.7%	98.0%	96.6%
Big Stone	19	18	8	18	18	7	94.7%	100.0%	87.5%
Blue Earth	102	108	111	91	99	107	89.2%	91.7%	96.4%
Brown	45	52	67	39	50	61	86.7%	96.2%	91.0%
Carlton	65	85	84	63	83	81	96.9%	97.6%	96.4%
Carver	71	121	133	65	114	122	91.5%	94.2%	91.7%
Cass	117	135	118	106	127	101	90.6%	94.1%	85.6%
Chippewa	5	15	12	5	15	12	100.0%	100.0%	100.0%
Chisago	88	105	79	82	91	72	93.2%	86.7%	91.1%
Clay	110	101	96	105	92	85	95.5%	91.1%	88.5%
Clearwater	18	13	14	15	13	12	83.3%	100.0%	85.7%
Cook	10	13	11	9	12	10	90.0%	92.3%	90.9%
Cottonwood	42	40	29	40	37	29	95.2%	92.5%	100.0%
Crow Wing	130	162	114	120	147	101	92.3%	90.7%	88.6%
Dakota	217	336	336	206	317	307	94.9%	94.3%	91.4%
Dodge	40	21	16	36	20	16	90.0%	95.2%	100.0%
Douglas	60	72	69	57	70	65	95.0%	97.2%	94.2%
Faribault/Martin	92	99	69	90	94	64	97.8%	94.9%	92.8%
Fillmore	16	11	14	13	10	13	81.3%	90.9%	92.9%
Freeborn	64	102	97	63	96	92	98.4%	94.1%	94.8%
Goodhue	68	59	58	61	57	53	89.7%	96.6%	91.4%
Grant	6	12	8	6	12	8	100.0%	100.0%	100.0%

County	Children in Placement Less than 12 Months			Had Two or Fewer Placement Settings			Rate of Two or Few Placement Settings		
	2004	2005	2006	2004	2005	2006	2004	2005	2006
State	9,033	9,464	9,421	8,277	8,501	8,401	91.6%	89.8%	89.2%
Hennepin	2,222	2,160	2161	1,918	1,799	1802	86.3%	83.3%	83.4%
Houston	28	32	25	27	28	25	96.4%	87.5%	100.0%
Hubbard	75	52	55	74	47	48	98.7%	90.4%	87.3%
Isanti	64	101	86	62	94	77	96.9%	93.1%	89.5%
Itasca	202	236	149	187	214	135	92.6%	90.7%	90.6%
Jackson	23	27	35	23	26	29	100.0%	96.3%	82.9%
Kanabec	35	28	39	34	25	29	97.1%	89.3%	74.4%
Kandiyohi	82	86	115	73	82	105	89.0%	95.3%	91.3%
Kittson	5	5	12	5	5	11	100.0%	100.0%	91.7%
Koochiching	47	51	60	45	45	54	95.7%	88.2%	90.0%
Lac qui Parle	10	12	13	9	11	11	90.0%	91.7%	84.6%
Lake	25	28	24	25	22	23	100.0%	78.6%	95.8%
Lake of the Woods	8	5	3	8	5	3	100.0%	100.0%	100.0%
Le Sueur	36	26	22	32	24	20	88.9%	92.3%	90.9%
Lincoln/Lyon/Murray	62	72	58	52	63	54	83.9%	87.5%	93.1%
McLeod	39	39	82	39	36	81	100.0%	92.3%	98.8%
Mahnomen	31	35	51	28	33	48	90.3%	94.3%	94.1%
Marshall	18	16	14	16	16	13	88.9%	100.0%	92.9%
Meeker	30	20	40	27	19	33	90.0%	95.0%	82.5%
Mille Lacs	79	42	66	72	39	63	91.1%	92.9%	95.5%
Morrison	65	80	84	63	73	72	96.9%	91.3%	85.7%
Mower	72	68	74	66	62	69	91.7%	91.2%	93.2%
Nicollet	58	41	47	54	41	41	93.1%	100.0%	87.2%
Nobles	29	37	27	28	35	27	96.6%	94.6%	100.0%
Norman	19	19	14	18	19	10	94.7%	100.0%	71.4%
Olmsted	117	114	120	113	105	114	96.6%	92.1%	95.0%
Otter Tail	83	68	76	81	62	63	97.6%	91.2%	82.9%
Pennington	42	34	39	38	34	37	90.5%	100.0%	94.9%
Pine	82	87	66	77	75	59	93.9%	86.2%	89.4%
Pipestone	27	25	24	26	24	22	96.3%	96.0%	91.7%

County	Children in Placement Less than 12 Months			Had Two or Fewer Placement Settings			Rate of Two or Few Placement Settings		
	2004	2005	2006	2004	2005	2006	2004	2005	2006
State	9,033	9,464	9,421	8,277	8,501	8,401	91.6%	89.8%	89.2%
Polk	76	80	74	70	71	63	92.1%	88.8%	85.1%
Pope	8	6	17	5	5	14	62.5%	83.3%	82.4%
Ramsey	1,217	1,127	1,221	1,142	1,043	1,122	93.8%	92.5%	91.9%
Red Lake	9	7	14	8	7	13	88.9%	100.0%	92.9%
Redwood	30	43	40	29	43	38	96.7%	100.0%	95.0%
Renville	34	36	22	33	35	22	97.1%	97.2%	100.0%
Rice	43	55	46	40	48	40	93.0%	87.3%	87.0%
Rock	12	21	23	11	18	20	91.7%	85.7%	87.0%
Roseau	35	31	34	35	30	32	100.0%	96.8%	94.1%
St. Louis	332	427	424	316	375	366	95.2%	87.8%	86.3%
Scott	114	120	112	105	115	110	92.1%	95.8%	98.2%
Sherburne	117	107	105	117	100	94	100.0%	93.5%	89.5%
Sibley	20	21	25	20	19	23	100.0%	90.5%	92.0%
Stearns	170	225	228	152	195	197	89.4%	86.7%	86.4%
Steele	46	34	40	40	34	39	87.0%	100.0%	97.5%
Stevens	5	15	16	5	14	15	100.0%	93.3%	93.8%
Swift	7	30	20	5	27	18	71.4%	90.0%	90.0%
Todd	40	27	49	39	25	48	97.5%	92.6%	98.0%
Traverse	6	14	2	5	13	2	83.3%	92.9%	100.0%
Wabasha	68	51	54	57	46	49	83.8%	90.2%	90.7%
Wadena	29	42	45	26	41	44	89.7%	97.6%	97.8%
Waseca	38	46	43	36	45	40	94.7%	97.8%	93.0%
Washington	247	192	228	237	183	218	96.0%	95.3%	95.6%
Watonwan	19	13	23	19	12	21	100.0%	92.3%	91.3%
Wilkin	23	14	10	23	12	10	100.0%	85.7%	100.0%
Winona	92	85	75	87	81	70	94.6%	95.3%	93.3%
Wright	180	224	212	172	201	191	95.6%	89.7%	90.1%
Yellow Medicine	25	18	30	23	16	23	92.0%	88.9%	76.7%

Health Examination within One Year

State law requires that all children in placement greater than or equal to 30 days should have a physical examination within one year. A county meets or exceeds the standard if county rates are higher than the state performance of 51.3 percent for 2005 and 50.7 percent for 2006.

County	Children in Placement		Children in Placement Greater than or Equal to 30 Days		Had a Physical Exam within One Year		Health Exam Rate	
	2005	2006	2005	2006	2005	2006	2005	2006
State	14,723	14,770	11,741	11,828	6,024	5,993	51.3%	50.7%
Aitkin	59	70	42	59	28	37	66.7%	62.7%
Anoka	969	870	675	598	233	225	34.5%	37.6%
Becker	218	249	194	230	122	126	62.9%	54.8%
Beltrami	191	244	168	224	128	142	76.2%	63.4%
Benton	88	85	74	71	47	42	63.5%	59.2%
Big Stone	21	15	20	13	15	4	75.0%	30.8%
Blue Earth	157	167	121	125	39	39	32.2%	31.2%
Brown	78	92	62	76	30	35	48.4%	46.1%
Carlton	144	151	134	135	83	98	61.9%	72.6%
Carver	172	179	119	123	69	58	58.0%	47.2%
Cass	188	171	152	146	90	97	59.2%	66.4%
Chippewa	22	22	18	21	16	15	88.9%	71.4%
Chisago	159	132	112	103	63	62	56.3%	60.2%
Clay	176	181	165	157	54	44	32.7%	28.0%
Clearwater	24	21	18	21	3	8	16.7%	38.1%
Cook	16	15	11	12	7	4	63.6%	33.3%
Cottonwood	55	53	40	44	28	37	70.0%	84.1%
Crow Wing	249	204	213	181	66	31	31.0%	17.1%
Dakota	494	509	330	396	71	97	21.5%	24.5%
Dodge	42	28	37	23	15	10	40.5%	43.5%
Douglas	89	99	79	84	40	41	50.6%	48.8%
Faribault/Martin	124	97	97	82	81	65	83.5%	79.3%
Fillmore	27	28	26	27	9	12	34.6%	44.4%
Freeborn	147	139	125	121	76	72	60.8%	59.5%
Goodhue	100	106	90	88	28	19	31.1%	21.6%
Grant	17	13	13	11	5	4	38.5%	36.4%

County	Children in Placement		Children in Placement Greater than or Equal to 30 Days		Had a Physical Exam within One Year		Health Exam Rate	
	2005	2006	2005	2006	2005	2006	2005	2006
Hennepin	3,546	3,556	2,894	2,925	1,880	1,988	65.0%	68.0%
Houston	54	48	50	45	20	29	40.0%	64.4%
Hubbard	76	77	66	71	36	47	54.5%	66.2%
Isanti	139	123	109	112	55	55	50.5%	49.1%
Itasca	316	235	235	183	60	52	25.5%	28.4%
Jackson	43	49	38	41	18	23	47.4%	56.1%
Kanabec	43	49	34	39	17	9	50.0%	23.1%
Kandiyohi	149	173	115	130	38	22	33.0%	16.9%
Kittson	6	13	2	11	2	10	100.0%	90.9%
Koochiching	75	80	67	58	19	13	28.4%	22.4%
Lac qui Parle	16	19	8	18	1	9	12.5%	50.0%
Lake	52	46	45	37	16	16	35.6%	43.2%
Lake of the Woods	6	3	6	3	5	2	83.3%	66.7%
Le Sueur	64	56	53	51	25	13	47.2%	25.5%
Lincoln/Lyon/Murray	106	100	90	71	44	37	48.9%	52.1%
McLeod	73	117	58	84	40	50	69.0%	59.5%
Mahnomen	46	61	32	54	16	37	50.0%	68.5%
Marshall	24	22	21	19	19	14	90.5%	73.7%
Meeker	32	53	28	47	16	12	57.1%	25.5%
Mille Lacs	69	88	61	71	26	27	42.6%	38.0%
Morrison	106	125	86	109	52	53	60.5%	48.6%
Mower	98	109	88	90	44	38	50.0%	42.2%
Nicollet	60	65	47	55	36	26	76.6%	47.3%
Nobles	44	38	32	33	19	19	59.4%	57.6%
Norman	25	21	18	19	13	13	72.2%	68.4%
Olmsted	194	192	166	171	106	136	63.9%	79.5%
Otter Tail	117	110	101	88	81	64	80.2%	72.7%
Pennington	63	69	56	57	17	16	30.4%	28.1%
Pine	131	105	107	89	68	53	63.6%	59.6%
Pipestone	45	37	34	34	22	17	64.7%	50.0%
Polk	117	113	94	100	47	52	50.0%	52.0%
Pope	14	26	12	23	7	9	58.3%	39.1%

County	Children in Placement		Children in Placement Greater than or Equal to 30 Days		Had a Physical Exam within One Year		Health Exam Rate	
	2005	2006	2005	2006	2005	2006	2005	2006
Ramsey	1,906	1,967	1,451	1,415	633	610	43.6%	43.1%
Red Lake	8	14	6	14	5	8	83.3%	57.1%
Redwood	64	63	55	45	29	12	52.7%	26.7%
Renville	46	31	40	23	22	13	55.0%	56.5%
Rice	89	97	81	91	29	24	35.8%	26.4%
Rock	36	36	26	26	16	11	61.5%	42.3%
Roseau	36	40	27	31	23	20	85.2%	64.5%
St. Louis	699	708	615	634	237	247	38.5%	39.0%
Scott	182	172	128	113	82	68	64.1%	60.2%
Sherburne	142	146	123	132	69	82	56.1%	62.1%
Sibley	28	31	23	25	18	16	78.3%	64.0%
Stearns	335	352	266	288	113	109	42.5%	37.8%
Steele	59	64	53	52	22	17	41.5%	32.7%
Stevens	22	19	22	18	11	9	50.0%	50.0%
Swift	36	29	29	28	19	21	65.5%	75.0%
Todd	66	76	65	69	11	9	16.9%	13.0%
Traverse	17	2	14	2	12	2	85.7%	100.0%
Wabasha	75	71	56	49	48	40	85.7%	81.6%
Wadena	65	64	51	53	19	16	37.3%	30.2%
Waseca	63	59	44	37	22	14	50.0%	37.8%
Washington	286	320	197	193	125	102	63.5%	52.8%
Watsonwan	25	35	25	32	8	6	32.0%	18.8%
Wilkin	29	29	28	26	10	11	35.7%	42.3%
Winona	100	95	70	62	23	26	32.9%	41.9%
Wright	303	297	229	234	82	91	35.8%	38.9%
Yellow Medicine	31	35	29	27	25	24	86.2%	88.9%

Section IV: Performance by Racial/Ethnic Groups (2004-06)

Re-entered Placement within 12 Months

(National standard = 8.6 percent or lower)

- Minnesota performance on re-entry rates was 19.1 percent in 2006. Blacks had the lowest re-entry rate of 18.1 percent, followed by whites at 19.4 percent. American Indians had the highest re-entry rate.
- Over the three year period, American Indians showed an average annual improvement of -3.0 percent. Blacks followed at -2.4 percent, Asian at -2.2 percent, and whites at -1.7 percent. Average annual improvement over the period was -1.8 percent.
- Over the three-year period, American Indians had an average annual increase in the number of children entering placement (+25), while other racial/ethnic groups experienced a decrease.
- None of the racial/ethnic groups were meeting the national standard of 8.6 percent or lower.

Racial/Ethnic Categories	Entered Placement			Prior Placement <12 Months			Re-entry Rates		
CY	2004	2005	2006	2004	2005	2006	2004	2005	2006
Two or more races	571	527	612	130	112	137	22.8%	21.3%	22.4%
Asian	239	199	206	59	38	42	24.7%	19.1%	20.4%
Black	1,763	1,595	1,732	402	305	314	22.8%	19.1%	18.1%
American Indian	807	904	857	219	176	182	27.1%	19.5%	21.2%
White	4,767	4,658	4,249	1,082	904	824	22.7%	19.4%	19.4%
Others (includes Pacific Islanders)	413	328	401	49	48	39	11.9%	14.6%	9.7%
State	8,560	8,211	8,057	1,941	1,583	1,538	22.7%	19.3%	19.1%

Reunified within 12 Months
(National standard = 76.2 percent or higher)

- In 2006 Minnesota's reunification rate was 90.4 percent. Blacks had the highest rate at 91 percent, followed by American Indians at 90.7 percent.
- All of the racial groups performed well on this measure, and all were within a few percentage points of the state performance and were meeting the national standard.
- Over the three-year period, American Indian reunification rates had an average annual change (improvement) of 3.7 percent. The rest of the racial\ethnic groups had slight decreases.

Racial/Ethnic Categories	Total reunified			Reunified within 12 months			Reunification rates		
CY	2004	2005	2006	2004	2005	2006	2004	2005	2006
Two or more races	276	298	322	249	255	284	90.2%	85.6%	88.2%
Asian	183	155	147	170	147	131	92.9%	94.8%	89.1%
Black	987	1,059	1,127	917	972	1,026	92.9%	91.8%	91.0%
American Indian	424	441	397	353	409	360	83.3%	92.7%	90.7%
White	2,775	2,933	2,856	2,567	2,678	2,574	92.5%	91.3%	90.1%
Others (includes Pacific Islanders)	218	198	236	212	187	222	97.2%	94.4%	94.1%
State	4,863	5,084	5,085	4,468	4,648	4,597	91.9%	91.4%	90.4%

Two or Fewer Placement Settings within 12 Months

(National standard = 86.7 percent or higher)

- In 2006, the rate for two or fewer placement settings within 12 months was 89.2 percent. Asians had the highest rate, 96.1 percent, while American Indians had the second lowest at 83.3 percent. All racial/ethnic groups exceeded the national standard of 86.7 percent or higher.
- Over the 3 year period, the state performance decreased minimally from 91.6 percent in 2004 to 89.2 percent in 2006. There were also minor changes in rates among racial/ethnic groups.

Racial/Ethnic Categories	In Placement < 12 Months			Had Two or Fewer Placements			Rates		
CY	2004	2005	2006	2004	2005	2006	2004	2005	2006
Two or more races	593	591	685	518	514	569	87.4%	87.0%	83.1%
Asian	251	230	231	238	213	222	94.8%	92.6%	96.1%
Black	1,881	1,803	1,913	1,679	1,586	1,672	89.3%	88.0%	87.4%
American Indian	873	1,049	1,027	765	890	856	87.6%	84.8%	83.3%
White	5,005	5,416	5,128	4,672	4,948	4,687	93.3%	91.4%	91.4%
Others (includes Pacific Islanders)	430	375	437	405	350	395	94.2%	93.3%	90.4%
State	9,033	9,464	9,421	8,277	8,501	8,401	91.6%	89.8%	89.2%

County Performance by Racial/Ethnic Groups (CY 2006)

Data on county performance by race for the above measures were published in [Bulletin # 07-68-11](#) “CYs 2008-09 County MFIP/CCSA Biennial Service Agreement Guidelines” (page 29). Access the link below to review “CCSA Performance Data by Racial/Ethnic Groups for CY 2006.”

http://www.dhs.state.mn.us/main/groups/publications/documents/pub/dhs16_138911.pdf

Measure 4: Re-Entered Placement within 12 Months

Calendar Year 2006

Each county data:

1st row: Reentered foster care within 12 months of a prior out-of-home episode (numerator)

2nd row: Entered placement in 2006 (denominator)

3rd row: Performance rate

4th row: Performance above or below county rate

A shaded cell: A performance gap of 5 percent or more

National standard: 8.6 percent or fewer children

County Name	No Data	More than one Race	Asian	Black	American Indian	Pacific Islander	Unknown	White	Hispanic	County
Anoka		10		10				60		91
		50		89				293		471
		20.0%		11.2%				20.5%		19.3%
		-0.7%		8.1%				-1.2%		
Dakota				10				39		62
				57				195		302
				17.5%				20.0%		20.5%
				3.0%				0.5%		
Hennepin		60		149	25		11	60	16	314
		278		827	193		107	408	166	1,889
		21.6%		18.0%	13.0%		10.3%	14.7%	9.6%	16.6%
		-5.0%		-1.4%	3.7%		6.3%	1.9%	7.0%	
Itasca					14			28		44
					35			73		113
					40.0%			38.4%		38.9%
					-1.1%			0.6%		
Polk								11	10	19
								57	27	70
								19.3%	37.0%	27.1%
								7.8%	-9.9%	
Ramsey		27	21	90				83	18	234
		87	117	452				366	104	1,118
		31.0%	17.9%	19.9%				22.7%	17.3%	20.9%
		-10.1%	3.0%	1.0%				-1.7%	3.6%	
St. Louis					30			34		75
					80			196		354
					37.5%			17.3%		21.2%
					-16.3%			3.8%	21.2%	
Washington				10				27		52
				29				104		207
				34.5%				26.0%		25.1%
				-9.4%				-0.8%	25.1%	
State		137	42	314	182		35	824	115	1,538
		612	206	1,732	857		330	4,249	692	8,057
		22.4%	20.4%	18.1%	21.2%		10.6%	19.4%	16.6%	19.1%
		-3.3%	-1.3%	1.0%	-2.1%		8.5%	-0.3%	2.5%	

Measure 5: Reunified Within 12 Months

Calendar Year 2006

Each county data:

1st row: Reunified in less than 12 months from the time of the latest removal from their home (numerator)

2nd row: Entered placement in 2006 (denominator)

3rd row: Performance rate

4th row: Performance above or below county rate

A shaded cell: A performance gap of 5 percent or more

National standard: 76.2 percent or more children

County Name	No Data	More than one Race	Asian	Black	American Indian	Pacific Islander	Unknown	White	Hispanic	County
Anoka		24		77				222	10	346
		24		79				241	10	370
		100.0%		97.5%				92.1%	100.0%	93.5%
		6.5%		4.0%				-1.4%	6.5%	
Becker					23			30		54
					27			39		67
					85.2%			76.9%		80.6%
					4.6%			-3.7%		
Beltrami					25			21		48
					32			25		59
					78.1%			84.0%		81.4%
					-3.2%			2.6%		
Blue Earth				11				37		55
				12				42		61
				91.7%				88.1%		90.2%
				1.5%				-2.1%		
Carlton					11			16		33
					12			20		39
					91.7%			80.0%		84.6%
					7.1%			-4.6%		
Cass					30			16		47
					34			20		55
					88.2%			80.0%		85.5%
					2.8%			-5.5%		
Clay								25	11	41
								32	13	48
								78.1%	84.6%	85.4%
								-7.3%	-0.8%	
Dakota				26			18	116	11	170
				30			18	122	14	180
				86.7%			100.0%	95.1%	78.6%	94.4%
				-7.8%			5.6%	0.6%	-15.9%	

Measure 5: Reunified Within 12 Months

Calendar Year 2006

Each county data:

1st row: Reunified in less than 12 months from the time of the latest removal from their home (numerator)

2nd row: Entered placement in 2006 (denominator)

3rd row: Performance rate

4th row: Performance above or below county rate

A shaded cell: A performance gap of 5 percent or more

National standard: 76.2 percent or more children

County Name	No Data	More than one Race	Asian	Black	American Indian	Pacific Islander	Unknown	White	Hispanic	County
Freeborn								50	23	60
								54	25	64
								92.6%	92.0%	93.8%
								-1.2%	-1.8%	
Hennepin		116	23	449	63		69	231	92	955
		145	28	510	71		75	269	103	1,102
		80.0%	82.1%	88.0%	88.7%		92.0%	85.9%	89.3%	86.7%
		-6.7%	-4.5%	1.4%	2.1%		5.3%	-0.8%	2.7%	
Itasca					20			60		83
					20			71		94
					100.0%			84.5%		88.3%
					11.7%			-3.8%		
Kandiyohi								48	22	54
								50	24	59
								96.0%	91.7%	91.5%
								4.5%	0.1%	
McLeod								25	15	30
								27	16	32
								92.6%	93.8%	93.8%
								-1.2%	0.0%	
Mille Lacs					13			17		30
					13			17		30
					100.0%			100.0%		100.0%
					0.0%			0.0%		
Nobles								15	11	16
								16	11	18
								93.8%	100.0%	88.9%
								4.9%	11.1%	
Olmsted				18				35		54
				19				40		60
				94.7%				87.5%		90.0%
				4.7%				-2.5%		

Measure 5: Reunified Within 12 Months

Calendar Year 2006

Each county data:

1st row: Reunified in less than 12 months from the time of the latest removal from their home (numerator)

2nd row: Entered placement in 2006 (denominator)

3rd row: Performance rate

4th row: Performance above or below county rate

A shaded cell: A performance gap of 5 percent or more

National standard: 76.2 percent or more children

County Name	No Data	More than one Race	Asian	Black	American Indian	Pacific Islander	Unknown	White	Hispanic	County
Ramsey		54	74	284	24		23	227	71	690
		55	83	309	27		26	251	75	755
		98.2%	89.2%	91.9%	88.9%		88.5%	90.4%	94.7%	91.4%
		6.8%	-2.2%	0.5%	-2.5%		-2.9%	-1.0%	3.3%	
St. Louis				18	35			98		164
				21	39			115		189
				85.7%	89.7%			85.2%		86.8%
				-1.1%	3.0%			-1.6%		
Stearns		13		24				82		127
		14		24				87		133
		92.9%		100.0%				94.3%		95.5%
		-2.6%		4.5%				-1.2%		
Washington				23			38	76		155
				23			38	84		164
				100.0%			100.0%	90.5%		94.5%
				5.5%			5.5%	-4.0%		
State	10	284	131	1,026	360		210	2,574	391	4,597
	10	322	147	1,127	397		224	2,856	425	5,085
	100.0%	88.2%	89.1%	91.0%	90.7%		93.8%	90.1%	92.0%	90.4%
	9.6%	-2.2%	-1.3%	0.6%	0.3%		3.3%	-0.3%	1.6%	

Measure 8: Two or Fewer Placement Settings

CY 2006 Data

Each county data:

1st row: Two or fewer placement settings in 12 months (numerator)

2nd row: Children in placement in 2006 (denominator)

3rd row: Performance rate

4th row: Performance above or below county rate

A shaded cell: A performance gap of 5 percent or more

National standard: 86.7 percent or more children

County Name	No Data	More than one Race	Asian	Black	American Indian	Pacific Islander	Unknown	White	Hispanic	County
Anoka		45		90	10		13	335		506
		53		95	16		14	358		551
		84.9%		94.7%	62.5%		92.9%	93.6%		91.8%
		-6.9%		2.9%	-29.3%		1.0%	1.7%		
Becker					57			63		123
					86			69		160
					66.3%			91.3%		76.9%
					-10.6%			14.4%		
Beltrami					92			45		142
					101			45		152
					91.1%			100.0%		93.4%
					-2.3%			6.6%		
Benton				13				37		57
				13				38		59
				100.0%				97.4%		96.6%
				3.4%				0.8%		
Blue Earth				14				73		107
				14				77		111
				100.0%				94.8%		96.4%
				3.6%				-1.6%		
Carlton					37			36		81
					39			37		84
					94.9%			97.3%		96.4%
					-1.6%			0.9%		
Cass					73			27		101
					88			29		118
					83.0%			93.1%		85.6%
					-2.6%			7.5%		

Measure 8: Two or Fewer Placement Settings

CY 2006 Data

Each county data:

1st row: Two or fewer placement settings in 12 months (numerator)

2nd row: Children in placement in 2006 (denominator)

3rd row: Performance rate

4th row: Performance above or below county rate

A shaded cell: A performance gap of 5 percent or more

National standard: 86.7 percent or more children

County Name	No Data	More than one Race	Asian	Black	American Indian	Pacific Islander	Unknown	White	Hispanic	County
Clay					14			59		85
					15			67		96
					93.3%			88.1%		88.5%
					4.8%			-0.5%		
Dakota		10		50			23	212		307
		12		58			24	227		336
		83.3%		86.2%			95.8%	93.4%		91.4%
		-8.0%		-5.2%			4.5%	2.0%		
Hennepin	37	245	41	777	185		104	413		1802
	39	317	43	925	235		118	484		2161
	94.9%	77.3%	95.3%	84.0%	78.7%		88.1%	85.3%		83.4%
	11.5%	-6.1%	12.0%	0.6%	-4.7%		4.7%	1.9%		
Itasca					40			90		135
					43			99		149
					93.0%			90.9%		90.6%
					2.4%			0.3%		
Mille Lacs					29			33		63
					29			36		66
					100.0%			91.7%		95.5%
					4.5%			-3.8%		
Mower					11			50		69
					11			55		74
					100.0%			90.9%		93.2%
					6.8%			-2.3%		
Olmsted		10		27				74		114
		10		28				79		120
		100.0%		96.4%				93.7%		95.0%
		5.0%		1.4%				-1.3%		

Measure 8: Two or Fewer Placement Settings

CY 2006 Data

Each county data:

1st row: Two or fewer placement settings in 12 months (numerator)

2nd row: Children in placement in 2006 (denominator)

3rd row: Performance rate

4th row: Performance above or below county rate

A shaded cell: A performance gap of 5 percent or more

National standard: 86.7 percent or more children

County Name	No Data	More than one Race	Asian	Black	American Indian	Pacific Islander	Unknown	White	Hispanic	County
Otter Tail				10				42		63
				14				50		76
				71.4%				84.0%		82.9%
				-11.5%				1.1%		
Ramsey		82	127	453	44		39	373		1122
		90	129	500	54		44	400		1221
		91.1%	98.4%	90.6%	81.5%		88.6%	93.3%		91.9%
		-0.8%	6.6%	-1.3%	-10.4%		-3.3%	1.4%		
St. Louis	20	13		36	74			212		366
	21	17		40	93			240		424
	95.2%	76.5%		90.0%	79.6%			88.3%		86.3%
	8.9%	-9.9%		3.7%	-6.8%			2.0%		
Scott		13		18				73		110
		13		18				75		112
		100.0%		100.0%				97.3%		98.2%
		1.8%		1.8%				-0.9%		
Stearns		17		33				138		197
		22		36				156		228
		77.3%		91.7%				88.5%		86.4%
		-9.1%		5.3%				2.1%		
Washington			10	28	11		46	115		218
			10	30	14		46	120		228
			100.0%	93.3%	78.6%		100.0%	95.8%		95.6%
			4.4%	-2.3%	-17.0%		4.4%	0.2%		
State	66	569	222	1,672	856		325	4,687		8,401
	69	685	231	1,913	1,027		364	5,128		9,421
	95.7%	83.1%	96.1%	87.4%	83.3%		89.3%	91.4%		89.2%
	6.5%	-6.1%	6.9%	-1.8%	-5.8%		0.1%	2.2%		