



Minnesota.  
Department of Conservation.  
Photographs of State Parks, Monuments,  
Recreational Areas, and Staff.

## **Copyright Notice:**

This material may be protected by copyright law (U.S. Code, Title 17). Researchers are liable for any infringement. For more information, visit [www.mnhs.org/copyright](http://www.mnhs.org/copyright).



MISCELLANEOUS

M.I.S. - 20

Basswood Lake - Curits and Fish









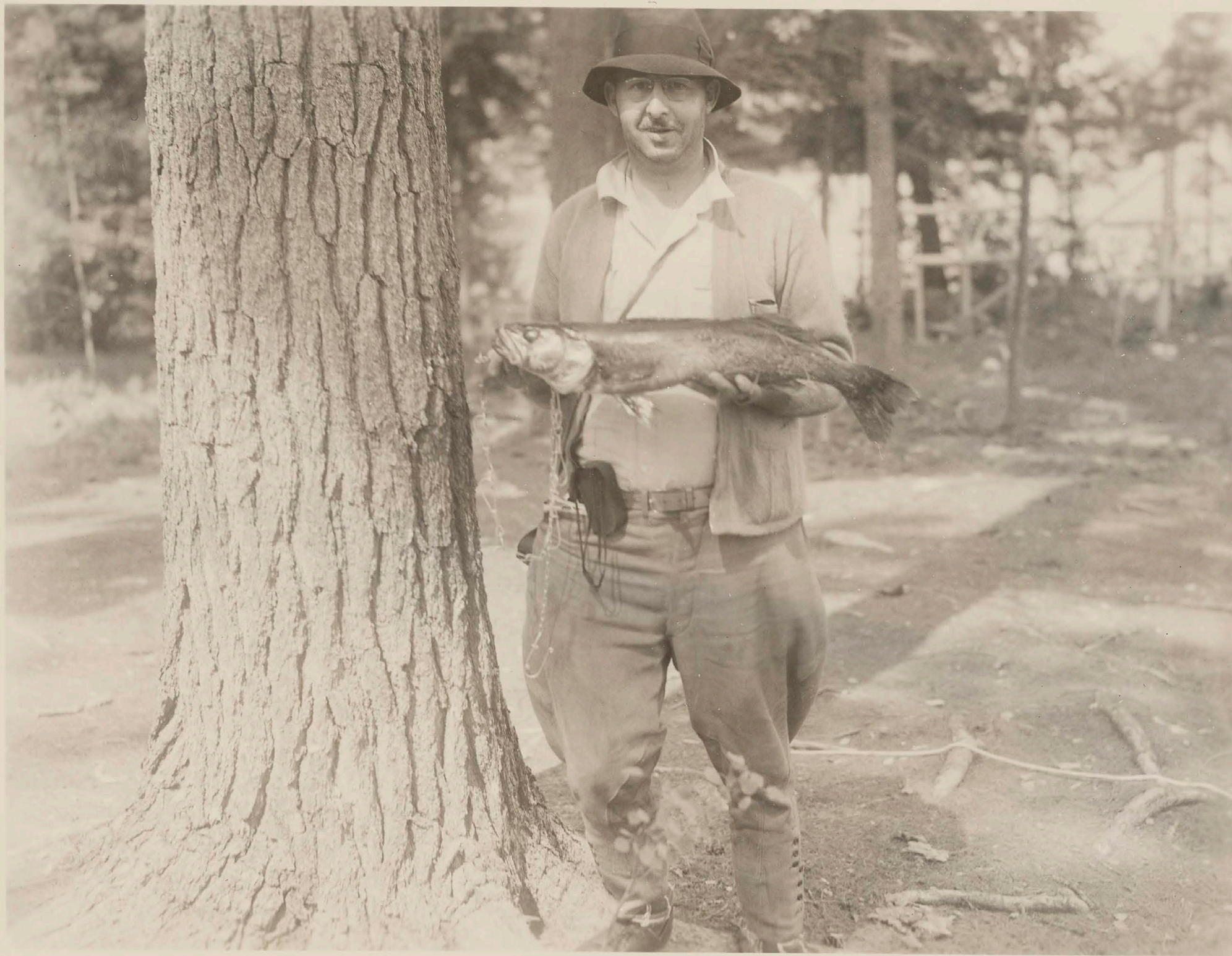
MISCELLANEOUS

M.I.S. - 21 - B

Basswood Lake - Harold W. Lathrop and pike









MISCELLANEOUS

M.I.S. - 22

Redwood Falls









MISCELLANEOUS

M.I.S. - 23

Baswood Lake - Boat for Falls Lake Portage





