



Horticultural Society: Letters Received and Sent

Copyright Notice:

This material may be protected by copyright law (U.S. Code, Title 17). Researchers are liable for any infringement. For more information, visit www.mnhs.org/copyright.

Publishes a Monthly Magazine entitled "The Minnesota Horticulturist." Subscription, \$1.00 per annum, including membership in the Society. Send to Secretary for copy of the Magazine and Folder containing the "Fruit List" for Minnesota and describing the work of the Society, its publications, methods, etc.

Minnesota State Horticultural Society.

President, CLARENCE WEDGE, Albert Lea.



OFFICE (AND LIBRARY) OF

A. W. LATHAM, Secretary,

207 KASOTA BLDG.,

Minneapolis, Minn., May, 9, 1903.



J. M. Underwood,

Lake City, Minn.

Friend Underwood:

I have your favor of yesterday and have tried to call you up at Hamlin's office this morning but they informed me you have not been there. The express company is Ballards. If it was written Pollards it was a mistake of the stenographer.

As to the size of the jars, John's ~~suggestion~~ suggestion would be all right if they were to be shown on an ordinary table but I am planning for their being placed on some kind of an installation similar to the old world's fair booth which now stands in the horticultural hall at the state fair. This will bring them high enough so that the passers by will not have to look down on the top of them but at the side and as these jars are to be exhibited in connection with fresh fruits if they were tall jars they would hide the fruits standing ^{behind} ~~in~~ them unless they are put on the back rows. My thought is to use them in various ways in arranging the exhibit in connection with fresh fruits to make a pretty effect.

The jars intended for the small fruits are 9 inches high by 2 inches wide. Those intended for plums are 8 inches high and 4 inches in diameter the body of them being round with a fancy cover and pedestal. They will hold a pint. I don't care if you change this lot and instead send 24 more of the 9 inch by 2 inch the same as for small fruits. That size jar is only 2 inches in diameter but whatever solution the plums are put into is likely to take some color from the plum and if the jar is very slim the solution will still be transparent and the plums show better than though it was a large jar.



Publishes a Monthly Magazine entitled "The Minnesota Horticulturist." Subscription, \$1.00 per annum, including membership in the Society. Send to Secretary for copy of the Magazine and Folder containing the "Fruit List" for Minnesota and describing the work of the Society, its publications, methods, etc.

Minnesota State Horticultural Society.

President, CLARENCE WEDGE, Albert Lea.



OFFICE (AND LIBRARY) OF

A. W. LATHAM, Secretary,

207 KASOTA BLDG.,

Minneapolis, Minn.,

Of the remaining jars, 48 are intended for grapes and 72 for apples. The grapes it is estimated will take 24 of the 5 inch by 8 inch jars (5 inches wide by 8 inches high) and the 24 jars 3 1/2 inches wide by 6 inches high. It is our purpose to put only a single bunch of grapes in each of these jars and suspend it with a cord from above there being a ring in the under side of the cover for that purpose. For apples there will be 24 jars 5 inches wide by 8 inches high and 48 jars 3 1/2 inches wide and 8 inches high. These figures do not include the cover which will add something to the height. The use of larger jars would increase very much the expense both of the jars and of filling and handling and everything considered it is my judgment that better results will be gotten out of the size selected. I submitted this list to Prof. Green before sending it. I wish, however, you would add to this list 6 jars 5 inches wide by 15 inches high. The 6 will cost \$5.50. I will use them for a mixture of fruit, ^(or for clusters of crab apples perhaps) and can place them to good advantage in the exhibit.

I hope I can see you before long as there are a lot of things I want to talk about.

Very cordially

Copy

MINNESOTA BOARD OF MANAGERS

FOR

THE WORLD'S FAIR, ST. LOUIS

THE LOUISIANA PURCHASE EXPOSITION

C. S. MITCHELL, SUPERINTENDENT

Lake City, Minn.
May 20th, 1903.

A. W. Latham, Esq.,
207 Kasota Block,
Minneapolis, Minn.

Friend Latham:-

Our Commission had a meeting Monday afternoon and it was agreed that I should have the glass jars ordered and in fact do everything in the Horticultural department as I pleased. It now occurs to me that it may be best that you order the jars, as, since you made out the list some other things may have occurred to you. As I understand it with the changes you have suggested the order would be as follows:-

24---12x2 $\frac{1}{2}$ inch. at \$5.28. per doz.

Pattent sample bottle,
72---9x2 inch at \$3.60 per dozen.

Pattent Globe Jars,
6---5x15 inch. at \$11.00

No.2600 Museum jars
48---5x8 in. at \$9.00 per doz.
24---3 $\frac{1}{2}$ x6 in. at 5.12 " "
48---3 $\frac{1}{2}$ x8 in. at 5.75 " "

You probably have a memorandum of what you wrote me, but I give you this as I understand it, and it may save you some trouble. Now please put in the order and send the invoice to me with your O.K. and I will see that it is paid.

I somewhat expect to be up to the Fair grounds next Friday and if there is anything you wish to see me about, perhaps we can arrange for a meeting.

Yours truly,

J.M.Underwood, V.Pres.



Publishes a Monthly Magazine entitled "The Minnesota Horticulturist." Subscription, \$1.00 per annum, including membership in the Society. Send to Secretary for copy of the Magazine and Folder containing the "Fruit List" for Minnesota and describing the work of the Society, its publications, methods, etc.

Minnesota State Horticultural Society.

President, CLARENCE WEDGE, Albert Lea.



OFFICE (AND LIBRARY) OF

A. W. LATHAM, Secretary,

207 KASOTA BLDG.,

Minneapolis, Minn., May 4, 1908.

copy

J. M. Underwood,
Lake City, Minn.

Dear Friend:

I have this morning received the price list for jars suitable for putting up fruits for the exhibit and with the approval of Prof. Green have made the following selections. The names and dimensions are exactly as you will need in ordering the goods and the price given is net the discount having been figured up.

Patent Sample Bottles.

Small 72 9in. x 2in. at \$3.00 per doz. \$21.60

Patent Globe Jars.

Plums 24 4in. x 8in. at ~~\$3.00~~^{3.12} per doz. 7.44

#2600 Museum Jars.

grapes 48 5in. x 8in. at \$9.00 per doz. 36.00

apples 24 3 1/2 in. x 6 in. at \$5.12 1/2 per doz 10.25

48 3 1/2 in. x 8 in. at \$5.75 per doz. 23.00

total cost \$98.29

Of these the first 72 mentioned are for smaller fruits, the next 24 for plums and of the remainder 48 are intended for grapes and 72 for apples. This makes 216 jars in all. There will be some breakage but we hope to get 200 jars out of it. If we are successful in this it gives the fruit exhibit an excellent foundation and will save considerably in the expense of fresh fruits. I ~~happo~~ they would come safely if ordered by freight though there is a chance that they may not get here in time for the strawberry season. If there is liable to be a delay the lot of 72 first



Publishes a Monthly Magazine entitled "The Minnesota Horticulturist." Subscription, \$1.00 per annum, including membership in the Society. Send to Secretary for copy of the Magazine and Folder containing the "Fruit List" for Minnesota and describing the work of the Society, its publications, methods, etc.

Minnesota State Horticultural Society.

President, CLARENCE WEDGE, Albert Lea.

OFFICE (AND LIBRARY) OF

A. W. LATHAM, Secretary,

207 KASOTA BLDG.,

Minneapolis, Minn. May 4, 1908.

mentioned might be sent by express and have them shipped to Prof. Green. These jars should be sent by Prof. Green those that come by freight directed to the Minnesota transfer and those by express to St. Anthony Park via St. Paul and Metropolitan express.

For strawberries to put up for this purpose I thought selection might be made from those that take premiums at the summer meeting. We are liable to get some nice ones for that purpose and usually in good condition. They could be put up that afternoon.

As a special feature for fruit exhibit what do you think of a large star? It might be 6 feet in diameter to be placed above the centre of the installation arranged to revolve, the face of the star to be covered with a suitable arrangement of apples and have for night display some little electric lights set down between them. This is the north star state you know. A suitable inscription might accompany this.

Very cordially,

copy.

✓ 104 ✓

Mr A W Satham Minnesota Minn
Minneapolis Minn May 21 1903

Dear Sir Enclosed you will find
\$1.00 as membership fee in Minnesota
Horticultural Society The applicant
is John Ostul of Minnesota you
may send him Greens Fruit
Grower to which I am entitled

The fruit outlook is the best I
have ever seen every thing is
covered with bloom

Respectfully Yours
J L Feigland
Minnesota

Minneapolis Minn

Please send me a supply of fruit lists

MINNESOTA BOARD OF MANAGERS

FOR

THE WORLD'S FAIR, ST. LOUIS

THE LOUISIANA PURCHASE EXPOSITION

C. S. MITCHELL, SUPERINTENDENT

Lake City, Minn.
April 27th, 1903.A. W. Latham, Esq.,
207 Kasota Block,
Minneapolis, Minn.

Friend Latham:-

Call at the Vendome and ask for your rubbers. They are there with your name on them. I tried to get time to see you but could not. As to the St. Louis go ahead with your arrangements and do everything that occurs to you to be necessary. In the near future I will see you and we will talk the matter over.

For the Agricultural Department, do you think it would be a good thing to hire Mr. Gillispie to superintend the job and to work up the exhibit? He is familiar with all the work that has been done at the State Fair, and could take this up something as you are doing with the Horticultural department. He is reliable and would be a good man and of good judgment. Of course he has not had experience in putting up exhibits, but it would be difficult to find anyone who is sufficiently posted in that matter, to do a first class job. Randall thinks he would make a good man and from what I have seen of him in his work at the state Fair I should think he could at least be trusted. Of course I would prefer someone who is an expert in Agricultural exhibits, but I do not know where to find him.

Cordially yours,

J.M. Underwood, V. Pres.

*Tell me again how much room we will need for
Hort & location, - on north side I think*



Publishes a Monthly Magazine entitled "The Minnesota Horticulturist." Subscription, \$1.00 per annum, including membership in the Society. Send to Secretary for copy of the Magazine and Folder containing the "Fruit List" for Minnesota and describing the work of the Society, its publications, methods, etc.

Minnesota State Horticultural Society.

President, CLARENCE WEDGE, Albert Lea.



OFFICE (AND LIBRARY) OF

A. W. LATHAM, Secretary,

207 KASOTA BLDG ,

Minneapolis, Minn., April, 24, 1903.

J. M. Underwood,
Lake City, Minn.

Friend: Underwood:

Copy

Since my return from Lake City I have corresponded with Mr. Redpath confidentially in regard to the St. Louis exposition and he assured me of his willingness to go down and take charge of the exhibit if I will see it is put in shape in the first place. The compensation suggested was as we talked Monday.

Prof. Green is coming in this afternoon and I am going to try and find out how many jars there are over at the station that are available for use. I do not know that there are any we can get but it is probable that there are if we return them and perhaps we may get enough to put up the summer fruits. I hope so as there might be a difficulty in getting them in here from the factory.

I have been reading over the law recently enacted under which your commission is acting and I notice that only \$15,000 are allowed to be paid out in salaries or wages. This provision may prove an embarrassment unless it can be gotten around. In the case of our department the amount we pay out for salaries could probably be reduced to one half or more from the figure I gave you in the letter directed to St. Paul. Did you receive this letter? For instance, my compensation up to May first instead of being spoken of as \$25 a month as a maximum might be rated as a whole as aggregate more than that and my salary during the exposition at \$25 a month \$150 for twelve months up to May first 1904. I do not think it would

aggregate more than that and my salary during the exposition at \$25 a month



Publishes a Monthly Magazine entitled "The Minnesota Horticulturist." Subscription, \$1.00 per annum, including membership in the Society. Send to Secretary for copy of the Magazine and Folder containing the "Fruit List" for Minnesota and describing the work of the Society, its publications, methods, etc.

Minnesota State Horticultural Society.

President, CLARENCE WEDGE, Albert Lea.



OFFICE (AND LIBRARY) OF

A. W. LATHAM, Secretary,

207 KASOTA BLDG.,

Minneapolis, Minn.

would amount to the same, \$150. Mr. Redpath's compensation could be placed at \$75 a month and expenses allowing \$25 a month for his board. What is paid out to those of our members who ~~was~~ there assisting in the care of the exhibit would not go in as salary at all simply as expenses, merely as railroad fare and board. The salaries in the horticultural department then would foot up as follows: Mr. Redpath, say for 7 months at \$75 a month, \$525; my compensation, \$300; total, \$825. Hope these figures may be of use to you in the situation. Please let me know as soon as possible what the arrangements will be. The sooner I get to work the better.

I am feeling very well since my trip to Lake City. It did me much good.

Very cordially,

*If the suggestion about my compensation
don't suit, make any arrangement about
it that suits you & I shall be satisfied.*

MINNESOTA BOARD OF MANAGERS

FOR

THE WORLD'S FAIR, ST. LOUIS

THE LOUISIANA PURCHASE EXPOSITION

C. S. MITCHELL, SUPERINTENDENT

Lake City, Minn.
April 17th, 1903.

A. W. Latham, Esq.,
207 Kasota Block,
Minneapolis, Minn.

Dear friend:-

Our St. Louis Commission have decided that I am to go ahead and get someone to superintend the horticultural department. Now tell me again who you think will do this best and how best to start out. I am so full of nursery work now that I need a little coaching.

To see our packing in its best form you better come down Monday or Tuesday. I expect to be at Mr. Hamlin's office St. Paul on Wednesday.

Cordially yours,

J. M. Underwood, V. Pres.



Publishes a Monthly Magazine entitled "The Minnesota Horticulturist." Subscription, \$1.00 per annum, including membership in the Society. Send to Secretary for copy of the Magazine and Folder containing the "Fruit List" for Minnesota and describing the work of the Society, its publications, methods, etc.

Minnesota State Horticultural Society.

President, CLARENCE WEDGE, Albert Lea.

OFFICE (AND LIBRARY) OF

A. W. LATHAM, Secretary,

207 KASOTA BLDG ,

copy
Minneapolis, Minn., April, 21, 1903.

J. M. Underwood,
Lake City, Minn.

Dear Sir:

I have been thinking about the matter of my taking hold of the horticultural exhibit at St. Louis and think I can manage it along the lines we talked but it would have to be with the understanding that I would not spend much of any time at St. Louis, any more than to go down at the installation and possibly if necessary on some other one occasion.

As to my compensation as superintendant it would depend upon the amount of work that it became necessary to do but as a maximum I think I could safely say that prior to the opening of the exposition it would not exceed \$25 per month and I think for a part of the time it would be much less than that. I should expect that any reasonable expenses connected with this would be paid by the commission, such as stationery and probably something for stenographic work etc. You are so well acquainted with me that I think you could satisfy the board in regard to this. Everything would be handled as economically as possible. After the exposition opens aside from the expenses of the assistant I think it is safe to say that \$100 a month would cover my salary and the expenses attending keeping some second person there to take my place. My thought is that the assistant ^{who} will spend his time at the exposition should receive \$100 a month and his railroad fare and I think for that sum we can secure the kind of help we need. It will of course be necessary that a second person be there also and the expense of this is provided for in the \$100 a month referred to above.



Publishes a Monthly Magazine entitled "The Minnesota Horticulturist." Subscription, \$1.00 per annum, including membership in the Society. Send to Secretary for copy of the Magazine and Folder containing the "Fruit List" for Minnesota and describing the work of the Society, its publications, methods, etc.

Minnesota State Horticultural Society.

President, CLARENCE WEDGE, Albert Lea.



OFFICE (AND LIBRARY) OF

A. W. LATHAM, Secretary,

207 KASOTA BLDG ,

Minneapolis, Minn.,

In taking hold of this it would be a great advantage for the superintendent to know approximately the amount the commission were willing to set aside for this department and it will be my effort to keep within that limit. From my experience at Chicago, I should judge that \$5,000 would approximately cover the cost of the exhibit that would be creditable to the state, allowing for a similar range of expenses as at Chicago.

This matter ought to be in hand at once as it will be necessary to secure glass jars and make arrangements for the putting up of the summer fruits, some of which will be ready for that purpose by the middle of June. The time is already very short. If necessary to confer further with me, tomorrow you might reach me by the Twin City telephone, No. 2230.

Very cordially,



THE JEWELL NURSERY CO.

LAKE CITY, MINNESOTA.



J. M. UNDERWOOD, President and General Manager

"LAKE CITY No. 2 Call 2"

April 4th, 1903.

A. W. Latham, Esq.,
207 Kasota block,
Minneapolis, Minn.

Dear friend:-

I confess that I ought to have acknowledged your kind favor of the 2nd, but as I have been taking advantage of every opportunity I had to visit you, and when I am with you talk so fast that it is little left to be said by letter. I was saving up everything for our next meeting. I assure you that I appreciate the good feeling that exists between us, and your correspondence is always a pleasure to me. If I have been negligent I offer my apology, and promise better in the future.

I congratulate you on the growth of the Society and feel that we are most fortunate in having your valuable assistance as Secretary.

I expect to have to run up to the Fair Grounds next Wed. for a meeting of the Executive Committee, but we are just starting in with our Spring packing, and I am more than busy, so I probably wont have time to go up and see you until after the Spring rush. I wish it was so you could run down and see what we are doing, and how we do it here in our busy time. I wouldn't have time to be very sociable, but I think it would be interesting to you to see us working under pressure.

I did not know that friend Pendergast was ill. He is a very nice man and I trust will be blessed with good health and spared to us for many years to come. One of our most loyal members is J. W. Kennedy of this place, and one that always thinks to speak to me about our Society and to send his dollar each year. It grieves me to have to say that he is rapidly passing away. I doubt if he ever gets out again. He has consumption and is confined to the bed most of the time. If you could send him a word of cheer, it would make him happy. He never has been a Horticulturist except in spirit, having conducted a shoe business here in town. But ever since our Society met here in our Masonic Hall he has been our enthusiastic admirer.

Our family are all well, and everybody on the ranch are as busy as they can be. Have a good sale for this Spring, about the same as last. We had rather expected a larger sale, but poor crop in some of our territory checked the sale somewhat.

I hope our bill will get through all right. I had a bill introduced in the interests of the parks in villages and cities of less than 10 thousand inhabitants. If you have a chance to help it, I think you will be doing a good thing, because it will stimulate the beautifying of all the small places in the state. It was introduced in the House by our representative Mr. O'Laughlin and in the Senate by our Senator Cook. I see by the papers that the St. Louis appropriation passed both houses. Our St. Fair bill H.P. 363 got through all right

I understand.

Cordially your friend,

J. M. Underwood.

WE WANT MEN
To sell
Our Northern Grown
Stock. Best Wages. Pay Weekly.

-----Lake City, Minn.
Feb. 14th, 1903.

Hon. C. N. Cosgrove,
LeSueur, Minn.
Dear friend:-

I am glad to know that you are willing to appoint Mr. Latham as Superintendent of the Horticulture. Not that it will relieve me any, for he already does all the work, but in simple justice to a man that I know to be the soul of honor, one that has served the association ably and well and he cannot be excelled in our Horticultural ranks for intelligence and ability. It is only justice to him that he should have full credit for the excellent work that he does and it is not so much the work as the discriminating judgement in directing others. I shall do for the department just the same as I always have, and you can rely on its being at the front in point of excellence. Mr. Latham has never asked for any recognition in fact he is of a retiring disposition and would never push himself to the front.

Thanking you for your consideration in this matter, I am,

Yours truly,
J.M. Underwood.

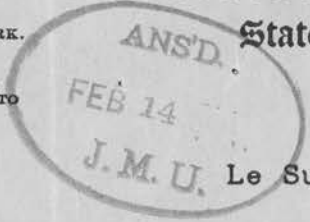
C. N. COSGROVE, LE SUEUR, President. CHESTER R. SMITH, ST. PAUL, First Vice President. B. F. NELSON, MINNEAPOLIS, Second Vice President. E. W. RANDALL, HAMLINE, Secretary. F. J. WILCOX, NORTHFIELD, Treasurer.

Board of Managers.

J. M. UNDERWOOD, LAKE CITY.
L. D. BAIRD, AUSTIN.
W. M. LIGGETT, ST. ANTHONY PARK.
W. G. SAWYER, PARTRIDGE.
N. S. GORDON, CROOKSTON.
J. C. CURRYER, MANKATO

Minnesota State Agricultural Society.
State Fair of 1902, September 1 to 6.

OFFICE OF THE PRESIDENT.



Le Sueur, Minn.,

Feb'y 12, 1902.

Hon. J. M. Underwood,

Lake City, Minn.

Dear Sir:-

I have been thinking for some time that perhaps I had better reconsider your request of a year ago in regard to Mr. Latham. Knowing that you will have a great deal of extra work this year in connection with the St. Louis exposition, and not wishing to over work you, and at the same time appreciating the work Mr Latham has done for the Society, I will, if it is still your wish, apoint him as Superintendent of the Horticultural Department for this year.

Please let me know what you wish in this matter.

Yours very sincerely,

C. N. Cosgrove

I wrote him to make you supt

JMU

25
West Salem, Wis., Mar. 25.

My Dear Sir,

We have about given up apple culture and own no Wealthy tree, but I appreciate Mr. Gideon's tree and labors, so send my mite to his memorial. The air drainage is not good in this part of valley, nor the soil right, so we depend on strawberries &c. for our table, never being commercial horticulturists, though no one tried harder than my father to grow apple for our own use, seedlings, Russians and all kinds.

Truly yours,

Ida E. Tilson.

I am just home from Minn. - Speak in N. Kansas in June.

✓ 106

Alexandria, Minn
March 18th 1903

Friend Latham

Seeing in the
last Horticulturist that
you offer a special premium
of 8 seedling apple trees for
a new member, I started
out the next day to get
one but in one half day
my ~~my~~ chance for seedlings
went "out of sight"

Strange that people who
are running market gardens
are so blind to their own
interests. However I was
up at Fergus yesterday

2

and there I got one

Theo. A. Huff
621 Cleveland Ave.,
Fergus Falls
Minn.

He selects as his premium
Nos. 9 and 11

Send me the 8 seedling
apple trees by ex.
Where can I buy about
25 seedling apple trees
3 or 4 years old grown
from seed from Minnesota grown
apples? Fraternally
N. J. Trenham Alexandria,
Minn.

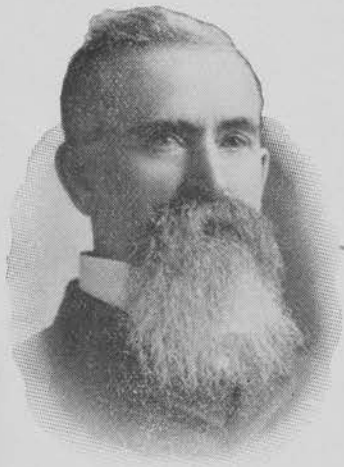
POSTAL CARD ONE CENT.

UNITED STATES OF AMERICA

THIS SIDE IS FOR THE ADDRESS ONLY.

Mr. A. W. Latham
207 Kasota Bldg -
Mpls.
Mn

Mr. Underwood is in
Chicago - I will not
return until the
first of next week
A B Underwood



Howard Lake and Litchfield Nurseries,

H. L. Taylor, Proprietor.

Propagates and Sells Hardy Apple Trees, Small Fruits,
Evergreens and Ornamental Shrubbery.

HOWARD LAKE, MINNESOTA 2/16 1903

A. W. Latham

Dear Sir,

Answering yours of the 12th will say I have no photos except a Kodak of the children finding the first apple I will send that and I will ask you to kindly return it to me as it is the only one I have and I wish to keep it. If you want to use my arrow plate from which the above "re love" was printed, I can send it to you. If you will return it soon.

I do not like one thing in the bill before the House for the protection of ~~the~~ nursery. - I cannot see how we can prevent the examiner from staying all summer if he chooses to do so at \$5 - Friday + 2x. Are the nursery men generally supporting it?

Yours truly,

H. L. Taylor

DAVID R. FRANCIS, PRESIDENT
WM. H. THOMPSON, TREASURER

WALTER B. STEVENS, SECRETARY
JAMES L. BLAIR, GENERAL COUNSEL

WORLD'S FAIR, ST. LOUIS
1904
LOUISIANA PURCHASE EXPOSITION

FREDERICK J. V. SKIFF, DIRECTOR OF EXHIBITS

FREDERIC W. TAYLOR,
ACTING CHIEF OF DEPARTMENT

HORTICULTURE

PAUL BROWN,
CHAIRMAN OF COMMITTEE

ST. LOUIS, U. S. A. December 27, 1902.

To the Editor of

Minn. Horticulturist,

207 Kasota Block,

Minneapolis, Minn.

Dear Sir:-

I am mailing you herewith some notes on the revised edition of the classification for the Universal Exposition of 1904, which I trust may be interesting to your readers, either in whole or in part.

Beginning very soon I expect to send out good live matter at frequent intervals and shall take special pains to see that you are supplied with copies.

Your publication is reaching this office regularly and I take this opportunity to thank you for your co-operation.

Yours very truly,

F. W. Taylor
Acting Chief, Department of Horticulture.

DAVID R. FRANCIS, PRESIDENT
WM. H. THOMPSON, TREASURER

WALTER B. STEVENS, SECRETARY
JAMES L. BLAIR, GENERAL COUNSEL

WORLD'S FAIR, ST. LOUIS
1904
LOUISIANA PURCHASE EXPOSITION

FREDERICK J. V. SKIFF, DIRECTOR OF EXHIBITS.

FREDERIC W. TAYLOR,
CHIEF OF DEPARTMENT.

HORTICULTURE.

PAUL BROWN,
CHAIRMAN OF COMMITTEE

ST. LOUIS, U. S. A.

April 6, 1903.

Mr. A. W. Latham, Secretary,
State Horticultural Society,
Minneapolis, Minn.

Dear Mr. Latham:

I am trying to gather together as complete sets as possible of the reports of the Horticultural Societies of the various States for the library which will be maintained in my Department throughout the Exposition for the benefit of not only ourselves, but of visitors. I wish you would favor me by getting together as complete a set as possible, forwarding them to me via American Express. I have a frank with this company and this is the reason that I am particular to specify it.

Holding myself ready to reciprocate should any opportunity arise,

I am,

Very truly yours,



Chief, Department of Horticulture.

B.

Handwritten:
A. W. Latham
H. S. O. S.
April 6, 1903.

Vredenburg & Co.

MAKERS OF
FRUIT & FLOWER PLATES
IN ALL PROCESSES.
JOBBER IN ENVELOPES
& TAGS.

PRINTERS,

ENGRAVERS
AND BINDERS.

LITHOGRAPHERS.

Rochester, N.Y. May 23, 1902.

Mr. A. W. Latham,
Minneapolis, Minn.

Dear Sir:-We take the liberty of mailing you, under another cover, a copy of the Wealthy Apple recently made for you, but which unfortunately did not meet with your approval. As we explained at that time, in the steam press printing the colors would come up stronger, and we think you will agree with us that the finished product is all that could be desired. We presume it is too late to use it for the purpose for which you intended it, but as a matter of satisfaction we wished to verify our former statements.

Yours very truly,

Vredenburg & Co.

THE MINNESOTA HISTORICAL SOCIETY.



HON. ALEX. RAMSEY,
President.
WARREN UPHAM,
Secretary and Librarian.

DAVID L. KINGSBURY,
JOSIAH B. CHANEY,
Assistant Librarians.

St. Paul, Minn. April 10th 1902.

Mr. A. W. Ratham, Secy.,
Minn. Horticultural Society,
Minneapolis, Minn.

Dear Sir:- Our file of the Annual Reports of the
Minnesota Horticultural Society lacks the following
issues:

Annual Reports for 1899: 1900 and 1901.

Kindly place the name of this Society, on your
mailing list to receive the reports as soon as
issued in ensuing years.

Our file is now complete from
1866 (1st issue) to 1898, and we desire to
obtain these reports, to be kept bound in this
Library, for future reference.

Very respectfully,
Warren Upham, Secy.,
By L. W. E.

ESTABLISHED 1868
BY
DR. P. A. JEWELL

INCORPORATED 1884
CAPITAL STOCK \$100,000.00

CONTROL 1000 ACRES



THE JEWELL NURSERY CO.
LAKE CITY, MINNESOTA,



J. M. UNDERWOOD, President and General Manager

"LAKE CITY No. 2 Call 2"

JSH

Jan. 5, 1903

A. W. Latham, Secy.,
Minneapolis, Minn.

Friend Latham:-

I have just received a letter from Wedge and am afraid he will be tied up with a local society there which meets the 13th and 14th, so he can't come to the meeting next week. I have written him that I don't see how he can find time for a local society with the State Society and State Agricultural Society to look after and that should have his best attention.

I think before Spring it would be well for you to arrange to have him come up and meet with the local members of the board and I will join you, so there will not be any expense to amount to anything. A letter from Andrews says he is so busy he hasn't had time for Horticultural Meetings. I gave him a scoring, but probably it wont do any good.

Yours truly,

J. M. Underwood.

WE WANT MEN
TO SELL
Our Northern Grown
Stock.
Best Wages
Pay Weekly

WISHING FOR YOU EVERYTHING
GOOD IN THE NEW YEAR.

NINETEEN HUNDRED AND THREE.

FREDERIC W. TAYLOR.

WORLD'S FAIR,
ST. LOUIS.

ESTABLISHED 1868
BY
DR. P. A. JEWELL

INCORPORATED 1884
CAPITAL STOCK \$100,000.00

CONTROL 1000 ACRES



THE JEWELL NURSERY CO.
LAKE CITY, MINNESOTA.



J. M. UNDERWOOD, President and General Manager

"LAKE CITY No. 2 Call 2"

JSH

Oct. 7, 1902.

A. W. Latham, Secy.,
Minneapolis, Minn.
207 Kasota Block.

Friend Latham:-

I think it will be alright to make up your report any time you find it convenient. You can send it down to me: I may want to add something to it.

In regard to Mr. Morton, he importuned me at the Fair to try and get him an appointment from the Governor. So far as I know, he is alright and I guess was a good worker at Buffalo. I don't think that he is a "heavy weight" by any means or that he understands best how to work up an exhibit. At least he did not impress me that way when he was working for the Buffalo, although he probably did the best he knew how then. His experience there ought to fit him for better work. If you had the time and strength to give to it, I think you would be a much better man for the place or Wyman Elliott. I don't know as it is anything worth seeking however. I have no further ambition to serve the public.

Cordially yours,

J. M. Underwood.

*Wed Mornig Yr report just recd - We commence
our fall packing to-day U*

WE WANT MEN
TO SELL
Our Northern Grown
Stock.
Best Wages
Pay Weekly

ESTABLISHED 1868
BY
DR. P. A. JEWELL

INCORPORATED 1884
CAPITAL STOCK \$100,000.00

CONTROL 1000 ACRES



1000 ✓
THE JEWELL NURSERY CO.
LAKE CITY, MINNESOTA.



J. M. UNDERWOOD, President and General Manager

"LAKE CITY No. 2 Call 2"

JSH

Dec. 31, 1902.

A. W. Latham, Secy.,
Minneapolis, Minn.
207 Kasota Block.

Friend Latham:-

Find enclosed \$10.00 for the Gideon Memorial Fund per your request.

I wrote Wedge asking him if he could not come up to the meeting of the Agricultural Society and plan to have a meeting of the Executive Committee. I took it for granted that there would be some things we would want to talk over and counsel about. Haven't heard a word from him or Andrews: I wrote him also. I wrote Bush a long letter some time ago but he seems corked up. What is the matter with them?

What do you know about the desirability of the Malinda apple for south eastern Minnesota or any other part of the state. I have been told that Mr. Bush has some large bearing trees and that he considers it valuable. We grew it in the nursery a good many years ago and at that time it seemed to be a poor grower and we discarded it, but it seems there are some large and old trees that are bearing well and we have gone to growing it again.

From the best of your information, if you were going to advise a man what to plant for a Commercial orchard of 5 acres, what varieties and the number of each would you recommend?

Have you heard anything of Bush's getting out a hand book on Horticulture?

Wishing you a happy new year, I am,

Cordially yours,

J. M. Underwood.

WE WANT MEN
TO SELL
Our Northern Grown
Stock.
Best Wages
Pay Weekly



THE JEWELL NURSERY Co.
LAKE CITY, MINNESOTA.



J. M. UNDERWOOD, President and General Manager

"LAKE CITY No. 2 Call 2"

JSH

Dec. 16, 1902.

A. W. Latham, Secy.,
207 Kasota Block,
Minneapolis, Minn.

Friend Latham:-

In answer to your question: I do not think that the Agricultural Society will do anything about building a new Horticultural Hall this year. I know that the chief desire is to have an amphitheatre built that will accommodate the stock interests with a large show ring and underneath the seats, booths for various purposes, including the display of manufacturers products; seeking to combine the two interests. There is a movement on the part of some of the manufacturers to want a manufacturer's building put up. It is claimed however that manufacturers will not put in operative machines and exhibit the manufacture of their goods; that they could not afford to do it, but a good many of them would like a place to display their goods so the last I heard talked was a possibility of combining the two interests: that of the amphitheatre and the manufacturers.

The Agricultural and Carriage interests demand more space as much of their goods has to be displayed in tents or without any cover. We had to put a beautiful hearse that cost several thousand dollars in a tent but it was not properly protected and must have been injured. Some other things occurred of a like nature that we want to avoid.

My impression is that we will have to continue as we are for the present. When we make the move for a new Horticultural Building, we don't want the stock or manufacturers in our way because we will want something nice and good.

I saw Mr. Randall the other day and he is in hopes that my friends and everyone that is a friend of the association will turn out and see that I am retained on the board of management.

As to the World's Fair commission, I don't know anything about it. I received a letter from Morton asking for the endorsement of our Agricultural Society and enclosing a petition for his appointment. I sent it to Mr. Randall and asked him to get the signature of the President and other members of the board and return it to me. He told me the other day that he did not do anything about it because he found that the Governor had indicated that he wanted to appoint me. That is as much as I know about it. I don't know what the duties are or what opportunity I would have for serving your interests or mine. Ordinarily I would expect it would mean to do a lot of gratuitous work and sacrifice my own business interests. How far had one ought to go in this direction? I am writing you this as a personal and, of course, would prefer that you do not say anything to the others about it. certainly I do not covet the position, but if I knew more about it, I might be glad to accept it.

Cordially yours,

J. M. Underwood.

ESTABLISHED 1868
BY
DR. P. A. JEWELL

INCORPORATED 1884
CAPITAL STOCK \$100,000.00

CONTROL 1000 ACRES



THE JEWELL NURSERY Co.
LAKE CITY, MINNESOTA,



J. M. UNDERWOOD, President and General Manager

"LAKE CITY No. 2 Call 2"

JSH

Jan. 13, 1903.

A. W. Latham, Secy.,
Minneapolis, Minn.
207 Kasota Blk.

Friend Latham:-

Your suggestions with regard to the St. Louis proposition are good and timely and I shall be glad to adopt them. Will probably see you tomorrow or next day and we can talk it all over.

Very truly yours,

J. M. Underwood.

WE WANT MEN
TO SELL
Our Northern Grown
Stock.
Best Wages
Pay Weekly

C. N. COSGROVE, LE SUEUR, President. CHESTER R. SMITH, ST. PAUL, First Vice President. B. F. NELSON, MINNEAPOLIS, Second Vice President. E. W. RANDALL, HAMLIN, Secretary. F. J. WILCOX, NORTHFIELD, Treasurer.

Board of Managers.

J. M. UNDERWOOD, LAKE CITY.
L. D. BAIRD, AUSTIN.
W. M. LIGGETT, ST. ANTHONY PARK.
W. G. SAWYER, PARTRIDGE.
N. S. GORDON, CROOKSTON.
J. C. CURRYER, MANKATO

Minnesota State Agricultural Society.

State Fair of 1902, September 1 to 6.

SECRETARY'S OFFICE.

Hamline, Minn.,

Lake City, Minn. Jan. 10, 1903.

A. W. Latham, Secy.,

Minneapolis, Minn.

Friend Latham:-

Your communication relative to appropriation for the State Horticultural Society is before me. I have not been with you enough in the work the past four years to be qualified to judge as well as you and I should be inclined to act upon your advice. If we base our appropriation on the amount that other states are receiving, I should think we ought to have \$1000.00 more. I think it was last Monday's Pioneer Press that gave a statement of the financial condition of our state which showed that we were in excellent condition and that we could easily be liberal toward an association as worthy as our society is. Will probably have an opportunity to talk this over with you next week.

Very truly yours,

J. M. Underwood.



Howard Lake and Litchfield Nurseries,

H. L. Taylor, Proprietor.

Propagates and Sells Hardy Apple Trees, Small Fruits,
Evergreens and Ornamental Shrubby.

HOWARD LAKE, MINNESOTA

1/15- 1903

✓ 50

A. W. Latham, Sec.

Dear Sir,

Enclosed

find 50¢ stamps for membership in
Hort. So. of Frank Brose, Howard Lake
Send him the Jan. no. of Hort. and premiums
344 of premiums offered for new members

In regard to the
Sub. to the Gideons Mem. find him a little
short just now but will send it later.

The 1000 fruit lists recd. but I
had to pay 34¢ charges on them
The agent said they were not marked
prepaid but if I would get a receipt
from your of payment then he would refund
it. Please send it in yours acknowledging
the receipt of this.

Yours Fraternally

H. L. Taylor
✓

ESTABLISHED 1868

BY
DR. P. A. JEWELL



INCORPORATED 1884
CAPITAL STOCK \$100,000.00

THE JEWELL NURSERY CO.
LAKE CITY, MINNESOTA.

J. M. UNDERWOOD, President and General Manager

CONTROL 1000 ACRES



"LAKE CITY No. 2 Call 2"

JSH

Jan. 16, 1903.

A. W. Latham, Secy.,
Minneapolis, Minn.
207 Kasota Block.

Friend Latham:-

I did not find out in time yesterday to telephone you what our plans would be for next week. Wednesday night we shall go to St. Louis on the Minneapolis and St. Louis road. Tuesday I can go up and meet you people if you think best. I would rather like to be there Tuesday night. Katheryn Jewell Everett is to read in one of the churches. I don't know where. She is the daughter of Dr. T. H. Everett who was the warmest personal friend of Dr. & Mrs. Jewell. My sister Katheryn who was a physician attended Mrs. Everett when the child Katheryn was born and she was named from my sister so I naturally have a great interest in the young lady. She is beautiful and accomplished and thinks her uncle Merrit is alright. I would rather like to surprise her by being present at the reading and not let her know anything about it. I wish you would secure seats for yourself and wife and myself and be my guest for the evening. I would go up on the train that reaches Minneapolis Tuesday noon and give the afternoon to the Committee. If this is agreeable, please let me know.

Cordially yours,

J. M. Underwood.

WE WANT MEN
To sell
Our Northern Grown
Stock. Best Wages. Pay Weekly.



NEW STATE CAPITOL IN COURSE OF CONSTRUCTION.

State of Minnesota

EXECUTIVE DEPARTMENT.

St. Paul, Feb 3 1903

A. W. Latham Esq.,
Secretary Horticultural Society
Minneapolis Minn

Dear Sir:-

I am about to make appointments to the Minnesota State Forestry Board and would be pleased to receive the recommendations of your society at the earliest possible date.

Yours very truly,

A. Van Sant

C. N. COSGROVE, LE SUEUR, President. CHESTER R. SMITH, ST. PAUL, First Vice President. B. F. NELSON, MINNEAPOLIS, Second Vice President. E. W. RANDALL, HAMLIN, Secretary. F. J. WILCOX, NORTHFIELD, Treasurer.

Board of Managers.

J. M. UNDERWOOD, LAKE CITY.
L. D. BAIRD, AUSTIN.
W. M. LIGGETT, ST. ANTHONY PARK.
W. G. SAWYER, PARTRIDGE.
N. S. GORDON, CROOKSTON.
J. C. CURRYER, MANKATO.

Minnesota State Agricultural Society.

State Fair of 1902, September 1 to 6.

SECRETARY'S OFFICE.

Stamptine, -Minn. 7-----

Lake City, Minn.
Jan. 27th, 1903.

A. W. Latham, Esq.,
407 Kasota Blk.,
Minneapolis, Minn.

Friend Latham:-

Kindly look over the premium list and make any correction necessary and send it to me, and I will look it over and see if there is anything I notice before sending it to the Committee on revision which meets Feb. 10th.

We had a pleasant and interesting time at St. Louis, and found everything as represented, and were more than ever convinced that Minnesota should have 150 thousand dollars in order to make a decent showing.

Cordially yours,

J. M. Underwood.

C. N. COSGROVE, LE SUEUR, President. CHESTER R. SMITH, ST. PAUL, First Vice President. B. F. NELSON, MINNEAPOLIS, Second Vice President. E. W. RANDALL, HAMLIN, Secretary. F. J. WILCOX, NORTHFIELD, Treasurer.

Board of Managers.

J. M. UNDERWOOD, LAKE CITY.
L. D. BAIRD, AUSTIN.
W. M. LIGGETT, ST. ANTHONY PARK.
W. G. SAWYER, PARTRIDGE.
N. S. GORDON, CROOKSTON.
J. C. CURRYER, MANKATO

Minnesota State Agricultural Society.

State Fair of 1902, September 1 to 6.

SECRETARY'S OFFICE.

~~Hamline, Minn.~~ Lake City, Minn.

Feb. 6th, 1903.

A. W. Latham, Esq.,
207 Kasota Blk.,
Minneapolis, Minn.

Dear friend:-

I was busy with the St. Louis Commissioners and could not get away to attend Mr. Dartt's funeral. I shall always remember him as a very interesting and valuable member of our Society, and a pleasant and genial companion. He had extreme views, but that is what I like in a man's character.

Mr. Elliott has written me to get together some statistics for the St. Louis exposition on the yield of fruit and the number of trees planted in the state. I tell him that I think the most economical and surest way of having a report that would do credit to the state would be to have you and Elliott and Green make it out. I think you will guess at it closer than any statistics that would come through our agents. If it were possible to get reports from each school district, by asking the school teachers or the Chairman of the school Boards to fill out blank reports and send them to some head quarters, I think that would come nearer getting an intelligent report than any other way, but that would involve a great deal of labor and expence. How can it be met?

I notice on the premium list you send me, that you have reduced the premiums \$47.00 and raised them \$126.00, making a net raise of \$79.00. The principal change I notice is in class 66 lot 198, of \$100.00 for a decoration table. I presume our Board will scan that item closely, and perhaps cut it out, although I shall not object to leaving it in. Wouldn't you however rather have the \$100.00 put into cut flowers for decorating the exhibit, by having them sent in fresh every day? I do not know anything to do with our bill before the legislature, except to keep after it. I will see or write to our members that it be passed.

You probably noticed by the papers that our Commission have presented our case to the Legislature, for \$100,000.00 more for St. Louis, and from what I have heard, I think we shall get it, and if we do, we shall be ready for business. Who is there that can put up a winning Agricultural display, like the one in the Horticultural? You and I have talked it over, but you may have thought of something more to say.

Cordially yours,

J. M. Underwood.

ESTABLISHED 1868
BY
DR. P. A. JEWELL

INCORPORATED 1884
CAPITAL STOCK \$100,000.00

CONTROL 1000 ACRES



THE JEWELL NURSERY CO.
LAKE CITY, MINNESOTA, ✓ 2.60



J. M. UNDERWOOD, President and General Manager

"LAKE CITY No. 2 Call 2"

ABU-LAE

Feb. 10th, 1903.

A. W. Latham, Esq.,
207 Kasota Block,
Minneapolis, Minn.

Dear Sir:-

Enclosed with this you will find our check for \$2.60 in payment of the following subscriptions:-

- ✓ Joseph Hall, Wausau, Nebr.
- ✓ E. J. O'Connell, Caledonia, Minn.
- ✓ D. R. Bernberg, Chinook, Mont.
- ✓ T. H. Nesseth, Fertile, Minn.

Also I will enclose one from Albert H. Comstock, Duluth, Minn. for which we will remit later on, as more subscriptions come in. The check was already made out for the above four, but we send this name in in order that the man may receive his numbers of the Horticulturist!

Enclosed with this you will find a brief mention of the reception at Mrs Loring's. I have been too busy to work up much of a report, so you will please sand-paper this and elaborate it just as much as you like. Enclosed with this I also send you the report I read at the meeting. I have not had time to look it over, and will leave that for you to do.

Yours truly,

The Jewell Nursery Co., Mail Order Dept.,

By *A. B. Underwood*
Superintendent.

WE WANT MEN
To sell
Our Northern Grown
Stock. Best Wages. Pay Weekly.