



## Horticultural Society: Letters Received and Sent

### **Copyright Notice:**

This material may be protected by copyright law (U.S. Code, Title 17). Researchers are liable for any infringement. For more information, visit [www.mnhs.org/copyright](http://www.mnhs.org/copyright).

Los Angeles, Cal., May 5, 1906.

Mr. A. W. Lathan,  
Secy. State Horticultural Society,  
Minneapolis, Minn.

Dear Mr. Lathan:-

It has been some years since I had the pleasure of seeing you and I am reminded of my old friend by seeing an article in the Farmers' Advocate of Topeka, Kans., about prices for new winter apples offered by the Minneapolis Horticultural Society.

Mr. Lathan, you will be surprised to know that while I have given up none of my interests in Montana, Idaho and Washington, I will be in Los Angeles for at least one year and possibly longer. A syndicate of wealthy Los Angeles capitalists have either bought, or control, over 12,000,000 acres of Government lands in the State of Sinaloa, Mexico. It is an ideal agricultural region, having an exceedingly rich productive soil, ample rainfall and extending along the coast of the Pacific Ocean and Gulf of California for over 380 miles. The farming lands extend from twenty to forty-five miles inland. This is a country like Egypt, producing two crops per year. The winter being without frost, such crops as are raised in Minnesota are produced, while during the summer are grown crops suited to tropical and semi-tropical countries. Of course, these embrace an immense variety of things of which we in the North know little or nothing about, such as cocoanuts, oranges, bananas, lemons, figs, pomelos, etc. In addition to all these is that wonderful fibre plant, the Maguey, which furnishes the supply of binder twine and bagging material for the farmers of Minnesota and the Northwest. In fact, the United States bought thirty million dollars worth of this fibre from Mexico last year. This Maguey plant grows wild all

A.W.L. #2.

over Sinaloa. Neither drouth nor wet weather affects it and after coming into bearing, from ten to fourteen successive crops can be taken from it before the plant dies. In fact, it is a country of surpassing interest; ample, but not too plentiful rainfall and strikingly healthful for Northern people. The splendid level, agricultural lands above referred to can yet be bought for the comparatively small price of from one to five dollars per acre. I have laid in ten thousand acres of them.

I sail for Sinaloa on May 10th to be gone a month. Upon my return I will write you a letter on the agricultural advantages of the country. You people in Minnesota, Iowa and the Dakotas, who have seen land rise in value from three or four dollars to forty to eighty dollars an acre, will be the ones to most quickly see what a country like Sinaloa offers, with its fine climate, wonderful variety of productions and low priced, fertile lands.

Mr. Lathan, since I last have seen you I have raised what I call the premium apple orchard in the State of Montana. I have used methods of intensive cultivation. The result is I have a profitable, bearing orchard in three years from planting. I have carried out all of the theories in regard to its cultivation about which I have often talked with you.

I am,

Yours very truly,

425 Merchants Trust Bldg.

*David R. McGinnis*

WARREN H. MANNING,  
LANDSCAPE DESIGNER,  
1101-1104 TREMONT BUILDING,  
BOSTON, MASS.

June 4, 1906.

Mr. A. W. Latham,  
207 Kasota Bldg.,  
Minneapolis, Minn.

Dear Sir:-

Write Mr. Clinton Rogers Woodruff, the Secretary of the American Civic Association, 703 North American Bldg., Philadelphia, Pa., who has all the back numbers of the American Park and Outdoor Art Association reports and pamphlets. Few of them are difficult to get as quite a large number were burned in a fire at Rochester. If you cannot get a complete set from Mr. Woodruff, I suggest that you appeal to the local members of the Association who may not care for their numbers and will help you make a full set.

The next time I am in Minneapolis I will try and call upon you. I do appreciate the fact that I am a life member and that I ought to drop in and have a chat with the secretary now and then.

With kindest wishes, I am,

Yours sincerely,

Warren H. Manning  
W.

WHM-SBL

IN SENDING IN NAME OF NEW MEMBER PLEASE FILL OUT AND USE THE FOLLOWING FORM:

*Sarborn June 4* 190*6*

A. W. LATHAM, Sec'y Minnesota State Horticultural Society.

Dear Sir:

Please enter the name of

*Albert Lamp*

Post-office

*Springfield*

, as a new member of the society, for which I enclose \$1.00, the annual fee. Besides the Report and Magazine, you may send him Plant Premiums Nos. ....

For my premium in securing this new member please send me the following book:

*Amateur Fruit Growing*

Signed

*S. H. W. Adams*

Post-office

*Sarborn*

SEND TO THE SECRETARY FOR MORE OF THESE FORMS AS NEEDED.

*Min*

## Will You Send

one or more new members in 1906, and help bring the number up to 2,500 this year?

## New Members Will Get

"Trees, Fruits and Flowers of Minnesota," cloth bound, 537 pages.

"Minnesota Horticulturist," 12 issues, 40 pages each.

Two Plant Premiums, his selection.

## You Will Get

Valuable Horticultural Books for your library (see list of Premium books in society folder) and an increased interest in the society from helping to enlarge its field of usefulness.

## Distribute the 1905 "Horticulturists"

and the "Society Folders" in getting new members.

## Please Do Not Forget

That in accepting the volume, "Trees, Fruits and Flowers of Minnesota," for 1905 it is **with the understanding** that you are to distribute the "Minnesota Horticulturists" received the previous year. You have no need to retain them, as they will be found bound in with the volume referred to above.

This distribution is a **very important part** of the work each member can do in teaching "right horticulture" and incidentally increasing the strength of the society.

Any number of the "Society Folders" can be had of the Secretary.

IN SENDING IN NAME OF NEW MEMBER PLEASE FILL OUT AND USE THE FOLLOWING FORM:

*Springfield* ✓ 190 *6*  
A. W. LATHAM, Sec'y Minnesota State Horticultural Society,

Dear Sir:

Please enter the name of *Henry Mercedine*  
Post-office *Springfield R. 1*, as a new member of the  
society, for which I enclose \$1.00, the annual fee. Besides the Report  
and Magazine, you may send him Plant Premiums Nos. ....

For my premium in securing this new member please send me the  
following book: *Amateur Fruit Growing*

Signed *A. W. Latham*

Post-office *Springfield R. 1*

SEND TO THE SECRETARY FOR MORE OF THESE FORMS AS NEEDED.

*Care J. Belling*

## Will You Send

one or more new members in 1906, and help bring the number up to 2,500 this year?

## New Members Will Get

"Trees, Fruits and Flowers of Minnesota," cloth bound, 537 pages.

"Minnesota Horticulturist," 12 issues, 40 pages each.

Two Plant Premiums, his selection.

## You Will Get

Valuable Horticultural Books for your library (see list of Premium books in society folder) and an increased interest in the society from helping to enlarge its field of usefulness.

## Distribute the 1905 "Horticulturists"

and the "Society Folders" in getting new members.

## Please Do Not Forget

That in accepting the volume, "Trees, Fruits and Flowers of Minnesota," for 1905 it is **with the understanding** that you are to distribute the "Minnesota Horticulturists" received the previous year. You have no need to retain them, as they will be found bound in with the volume referred to above.

This distribution is a **very important part** of the work each member can do in teaching "right horticulture" and incidentally increasing the strength of the society.

Any number of the "Society Folders" can be had of the Secretary.



...C. W. Merritt...

## Briarwood Fruit Farm

R. F. D. No. 3

Winona, Minn. Aug 8 1906

Friend Leatham

Your letter of Aug 6 is here. I must say to you that there is nothing in sight at present that would do credit either to you, the State, or myself. My orchard is taking a rest, but little fruit in it, and that little, of an inferior grade. Haven't adequate plans in the place a few Rollingstones is all, now if I see anything before the fair that I think will do, I will send it along. But do not depend upon anything from me. "Allmy & Remaden", are having large quantities of fruit, this is their year, furnish them up, a few of my wealthy tree that did not bear last year have apples, but they are unwavely small, been quite dry for this soil. Merritt

AGENTS FOR THE  
WORKS ISSUED BY THE UNIVERSITIES  
OF CAMBRIDGE (ENGLAND), COLUMBIA (NEW YORK)  
MESSRS. MACMILLAN & CO., LTD.,  
MESSRS. GEORGE BELL & SONS,  
BOHN'S LIBRARIES,  
MESSRS. A. & C. BLACK  
AND  
MESSRS. WHITTAKER & CO.

# The Macmillan Company,

PUBLISHERS,

64-66 Fifth Avenue,

New York, \_\_\_\_\_ 5/23/06/ \_\_\_\_\_ 190

Mr. A. W. Latham,  
207 Kasota Bldg., Minneapolis, Minn.

Dear Sir:

King's IRRIGATION AND DRAINAGE to which you refer in your favor of the 21st inst., is a net publication from which the discount is limited. Since you are, however, doing much to assist in the distribution of our agricultural books it has been decided to offer you a uniform discount of 40 % in connection with all volumes of the Rural Science Series and Garden Craft Series.

Of the books published by this house mentioned on your circular only two are listed at net prices. We refer to PLANT BREEDING by Bailey, and the title mentioned above. We have already advised you that we were pleased to offer you the longer discount in connection with the first named title and we are now granting your request in connection with the other.

Yours very truly,

THE MACMILLAN COMPANY.



AGENTS FOR THE  
WORKS ISSUED BY THE UNIVERSITIES  
OF CAMBRIDGE (ENGLAND), COLUMBIA (NEW YORK)  
MESSRS. MACMILLAN & CO., LTD.,  
MESSRS. GEORGE BELL & SONS,  
BOHN'S LIBRARIES,  
MESSRS. A. & C. BLACK  
AND  
MESSRS. WHITTAKER & CO.

# The Macmillan Company,

PUBLISHERS,

64-66 Fifth Avenue,

New York, 5/1/06/ 190

Mr. A.W. Latham, Secy.,  
c/o Minnesota State Horticultural Society,  
Minneapolis, Minn.

Dear Sir:

Acknowledging your favor of the 27th ult., we would state that we have purposely published the new edition of Bailey's PLANT BREEDING at a net price but in view of your interest in our publications and the many orders which you are sending us we have decided to allow you a special discount of 40 % even in connection with this title and we shall give our Order Department instructions to this effect. We trust that this is a satisfactory arrangement and beg to remain,

Yours very truly,

THE MACMILLAN COMPANY.



Regretting the trouble our carelessness has caused  
you, we are,

Yours very truly,

THE MACMILLAN COMPANY.

*H. C. Munroe*  
Subscription Dept.

PUBLISHERS OF  
*Allbutt's System of Medicine, 9 Vols.*  
*American Sportsman's Library, 20 Vols.*  
*Bailey's Cyclopedia of American Agriculture, 4 Vols.*  
*Bailey's Cyclopedia of American Horticulture, 4 Vols.*  
*Bryan's Dictionary of Painters and Engravers, 5 Vols.*  
*Cambridge Modern History, 12 Vols.*  
*Dictionary of National Biography, 66 Vols.*  
*Encyclopedia Biblica, 4 Vols.*  
*Benjamin Franklin's Life and Writings, 10 Vols.*  
*Garnett & Gosse, English Literature, Illustrated, 4 Vols.*  
*Grove's Dictionary of Music and Musicians, 5 Vols.*  
*Hakluyt's Discoveries and Voyages, 12 Vols.*  
*Maurice Hewlett's Works, 10 Vols. Edition De Luxe.*  
*Macmillan's Pedagogical Library, 16 Vols.*  
*Purchas, His Pilgrimes, 20 Vols.*  
*Sturgis' Dictionary of Architecture, 3 Vols.*

SUBSCRIPTION DEPARTMENT

THE MACMILLAN COMPANY,

64-66 FIFTH AVENUE

NEW YORK, May 16, 1906

Mr. A. W. Latham,

Minneapolis, Minn.

Dear Sir:-

We are in receipt of your esteemed favor of the 11th inst., and in reply would say that through an oversight the two books which were ordered by you for Mr. Hodgdon were sent by The National Express addressed to General Delivery, Minneapolis, Minn.

We presume that the books reached the Express Office in due course, and that the Express Company have failed to notify Mr. Hodgman at General Delivery that they had a package for him.

We are writing by same mail instructing the National Express Company to send out a tracer and locate the shipment at once.

*Ed. A. Hodgdon*

IN SENDING IN NAME OF NEW MEMBER PLEASE FILL OUT AND USE THE FOLLOWING FORM:

May 18 / 1906

A. W. LATHAM, Sec'y Minnesota State Horticultural Society,

Dear Sir:

Please enter the name of *Peter Badroun*

Post-office *Harvey, W.Dak.*, as a new member of the society, for which I enclose \$1.00, the annual fee. Besides the Report and Magazine, you may send him Plant Premiums Nos. ....

For my premium in securing this new member please ~~send me the following book:~~ *give me credit -*

Signed

*Manner*  
Post-office *Anamood, W.Dak.*

SEND TO THE SECRETARY FOR MORE OF THESE FORMS AS NEEDED.

## Will You Send

one or more new members in 1906, and help bring the number up to 2,500 this year?

## New Members Will Get

"Trees, Fruits and Flowers of Minnesota," cloth bound, 537 pages.

"Minnesota Horticulturist," 12 issues, 40 pages each.

Two Plant Premiums, his selection.

## You Will Get

Valuable Horticultural Books for your library (see list of Premium books in society folder) and an increased interest in the society from helping to enlarge its field of usefulness.

## Distribute the 1905 "Horticulturists"

and the "Society Folders" in getting new members.

## Please Do Not Forget

That in accepting the volume, "Trees, Fruits and Flowers of Minnesota," for 1905 it is **with the understanding** that you are to distribute the "Minnesota Horticulturists" received the previous year. You have no need to retain them, as they will be found bound in with the volume referred to above.

This distribution is a **very important part** of the work each member can do in teaching "right horticulture" and incidentally increasing the strength of the society.

Any number of the "Society Folders" can be had of the Secretary.

# The Amity Land Company

OF HOLLY COLORADO

FRED MOHL, GENERAL AGENT

Adrian, Minn.,

May 18,

1906

A. W. Latham,

Minneapolis, Minn.

Dear Sir:

Enclosed find P.O. money order for \$1.00 for membership fee for 1906 in our society for Paul Cook, Adrian, Minnesota. Please send him the annual report as well as "Amateur Fruit Grower" as a premium, and oblige,

Yours truly,

*Fred Mohl*

✓ 100

✓

LYCURGUS R. MOYER,  
Chippewa County Abstract Office.  
Attorney at Law.  
MONTEVIDEO, - MINN.

May 1<sup>o</sup>, 1906,

Dear Mr. Latham:-

I do not have any pictures so far as I can find that could  
~~used~~ be used to illustrate the paper I read on prairie forestation. When  
my son gets back from the University which will be within a few days, I  
will endeavor to have him take some such picture.

Yours very truly,

*Lycurgus R. Moyer*

My dear Mr. Latham -

There were  
no photos taken in  
connection with these  
works and I have  
really no pictures of myself  
whatever. I did not  
think the address worth  
publishing but if you  
feel that it is I am  
really very sorry not  
to have a few pictures  
of the tree planting on  
the small back of

two hundred fruit trees where  
the children in one of the  
poorer districts received a  
good deal of instruction. None  
were ever taken however.

I indeed I do wish to see  
you and shall do so  
at some time in the near  
future. I have had guests  
in the house so much of  
the time lately that there has  
been little opportunity for  
the call upon you I  
want to make.

Very cordially yours  
Edward M. McWhorter

May 14 - 1906  
St. Paul

---

IN SENDING IN NAME OF NEW MEMBER PLEASE FILL OUT AND USE THE FOLLOWING FORM:

*Wabasso Minn 5-10-1906*

A. W. LATHAM, Sec'y Minnesota State Horticultural Society,

Dear Sir:

Please enter the name of

*Wm Kuehl*

Post-office

*Wabasso*

, as a new member of the society, for which I enclose \$1.00, the annual fee. Besides the Report and Magazine, you may send him Plant Premiums Nos.

For my premium in securing this new member please send me the following book:

*Amateur Fruit Growing*

Signed

*S. H. W. Adams*

Post-office

*Wabasso Minn.*

SEND TO THE SECRETARY FOR MORE OF THESE FORMS AS NEEDED.

## Will You Send

one or more new members in 1906, and help bring the number up to 2,500 this year?

## New Members Will Get

"Trees, Fruits and Flowers of Minnesota," cloth bound, 537 pages.

"Minnesota Horticulturist," 12 issues, 40 pages each.

Two Plant Premiums, his selection.

## You Will Get

Valuable Horticultural Books for your library (see list of Premium books in society folder) and an increased interest in the society from helping to enlarge its field of usefulness.

## Distribute the 1905 "Horticulturists"

and the "Society Folders" in getting new members.

## Please Do Not Forget

That in accepting the volume, "Trees, Fruits and Flowers of Minnesota," for 1905 it is with the understanding that you are to distribute the "Minnesota Horticulturists" received the previous year. You have no need to retain them, as they will be found bound in with the volume referred to above.

This distribution is a very important part of the work each member can do in teaching "right horticulture" and incidentally increasing the strength of the society.

Any number of the "Society Folders" can be had of the Secretary.

PUBLISHERS OF

*Allbutt's System of Medicine*, 9 Vols.  
*American Sportsman's Library*, 20 Vols.  
*Bailey's Cyclopaedia of American Agriculture*, 4 Vols.  
*Bailey's Cyclopaedia of American Horticulture*, 4 Vols.  
*Bryan's Dictionary of Painters and Engravers*, 5 Vols.  
*Cambridge Modern History*, 12 Vols.  
*Dictionary of National Biography*, 68 vols.  
*Encyclopedia Biblica*, 4 Vols.  
*Benjamin Franklin's Life and Writings*, 10 Vols.  
*Garnett & Gosse, English Literature, Illustrated*, 4 Vols.  
*Hakluyt's Discoveries and Voyages*, 12 Vols.  
*Maurice Hewlett's Works*, 10 Vols. *Edition De Luxe*.  
*Macmillan's Pedagogical Library*, 16 Vols.  
*Purchas, His Pilgrimes*, 20 Vols.  
*Sturgis' Dictionary of Architecture*, 3 Vols.

SUBSCRIPTION DEPARTMENT

THE MACMILLAN COMPANY,

64-66 FIFTH AVENUE

NEW YORK, April 25, 1906

Mr. A. W. Latham,  
Minneapolis, Minn.

Dear Sir:-

Our supply of the new edition of Bailey's "Plant Breeding" has been received today, and all orders are receiving our immediate attention.

We take this opportunity of advising that the book has been greatly enlarged and improved upon, and the price has been changed from \$1 regular to \$1.25 net.

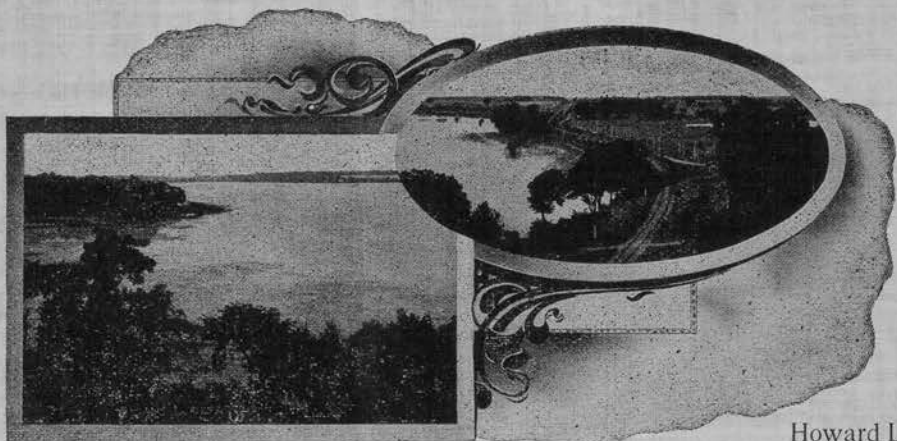
Kindly make note of change in price in your catalogue, so that a misunderstanding may not arise with future orders.

Yours very truly,

THE MACMILLAN COMPANY.

*H. Penman*

Subscription Dept.



Howard Lake, Minnesota

4/6

1906

Mr A. W. Latham

Minneapolis

Minn

Dear Sir

as Spring is approaching  
I makes one think of planting and I  
thought I would like to enter the  
list for seedling apples for 06 and  
would like to know how many sets of  
A. W. L. you could send me for \$10.  
also what you would charge me for that  
plate of my tree and if it could be reduced  
to  $\frac{2}{3}$  that size you will find it in April Number  
on page 153. Would be pleased to hear from  
you soon

yours very truly

J. A. M. Galt



Nurserymen,  
Florists & Seedsmen.

CABLE ADDRESS  
MAY. ST. PAUL.

GREENHOUSES: COR. COMO AVE. & ELFELT ST.  
RETAIL DEP'T. 64 E. SIXTH ST.  
OFFICE & WHOLESALE DEP'T 381-383 MINNESOTA ST.  
NURSERIES AT LAKELAND, MINN.

*St. Paul, Minn. 6-06.*

*Dictated by* TWR.

Mr. A. W. Latham, Sec'y.,  
Minnesota State Horticulture Society,  
207 Kasota Bldg.,  
Minneapolis.

Dear Sir:-

We are in receipt of yours of the 4th in reply to our letter asking you to send a copy of your latest report to J. A. Osborne, Fort Frances, Ont.

We have always understood that the state appropriated a certain sum each year to publish these reports for the horticulture society and we felt that the interest of the nurserymen of the state should be such that the horticulture society would be willing to grant a favor of this character. Not only this, the writer has been a member of your horticulture society for some years and did not think that an objection of this character would be raised. Mr. Osborne was interested in horticulture in the Northwest and was desirous of seeing what Minnesota was doing in this line. We trust that you will reconsider this matter. We are,

Yours truly,  
L.L. MAY & CO.,  
Per

*E. W. Brink*

Anamoose, N. Dak.

March 29, 1906.

Mr. A. W. Latham Sicut.

Minneapolis, Minn.

Cent 3.31.06

Dear Sir: In addition to new member sent  
previously, I enclose 50 cents in stamps  
for the book, Vegetable Gardening, and my pick of the  
Plant Premiums No. 9 Six seedlings of genuine Pyrus  
Baccata, for budding + grafting. & No 1 One Beta Grape.

P.S. Thank you for  
a quantity of Kenney's Malinda  
Seed if you can spare them -

Respectfully,

Em-

Mrs. C. J. Manner.



L. D. MILLS.



Nurseryman and Grower of Small Fruit.

CHOICE FRUITS IN SEASON

Lake Crystal, Minn. Apr. 29 1906

Mr. A. W. Saltham

*Mimeafolis trin.*

Dear Sir:

I send you my mail today, an apple. I should like to know what it is, if you can find out please let me know. I would send to Elliot, but dont have his street no. I send stamp for return postage very truly yours  
L. D. Mills

if it is not -  
~~I thought it is Wolf River~~ I dont know  
What it is -                      Well not

Elkton S. Dak. 1906

March the 29<sup>th</sup>

Secretary A. W. Loatham

Dear Sir I will  
send you two of those seedling  
Apples that I kept in the  
cellar all winter of course  
you know they were taken  
from the tree before they  
were ripe that was the last  
day of August. so I think  
they kept well. yours  
respectfully Mrs J. McCarthy  
Elkton S. Dak

Top graft onto Duchess as some hardy  
Early maturing variety and of im-  
proves in size and is hardy. there may  
be some value in it. etc.

Mankato, Minn.

New York City, N. Y.

Chicago, Ill.

**Publication Office**

121-123-125 Jackson St.  
MANKATO, - - MINN.

**Circulation 40,000**

Principally in Minnesota,  
North and South Dakota,  
Iowa and Wisconsin



24 to 32 Pages of live news, treating every topic of interest in the Farm Home.

Published Semi-Monthly  
at 50c a Year

1st and 15th of Month

Reaches nearly all the households of the prosperous farmers of the vast and growing West

3/19 - 1906

A. W. Latham

207 Kasota Block

Minneapolis

My dear sir:

I have the subscription

of Mr. Wm K. Young, Route 1 Mankato,  
to Mr. Schutz, he has received his  
membership card, but has not  
had his premium books, can  
you send them to him, his name  
is William K. Young, you have it  
William + then others by that name,

Yours truly

W.W.P.M. Connell

**Western Farmer and Dairyman Departments.**—The Dairy. The Creamery. Poultry and Pet Stock. Garden and Orchard  
Sheep. Swine. Veterinary—The Horse. Dogs and Cats. Farm Architecture. Our Young People. Legal—Questions Answered  
Farm Machinery. Market Reports. Bees—Their Care, etc. Patterns—Illustrated. Queries and Answers. Home Circle. An Inter-  
esting Story. Special Articles on Various Topics of Interest to the Farmer.

**Publication Office**

121-123-125 Jackson St.  
MANKATO, - - MINN.

**Circulation 40,000**

Principally in Minnesota,  
North and South Dakota,  
Iowa and Wisconsin

Mankato, Minn.

New York City, N. Y.

Chicago, Ill.



24 to 32 Pages of live news, treating every topic of interest in the Farm Home.

Published Semi-Monthly  
at 50c a Year

1st and 15th of Month

Reaches nearly all the households of the prosperous farmers of the vast and growing West

March 29, 1906.

Mr. A.W. Lathan, Secy.,  
207 Kasota Bldg.,  
Minneapolis, Minn.

My Dear Sir:--

Yours of the 27th inst., duly received and contents carefully noted. In reply would say that Mr. Shutz did at Westbrook just what he wrote you, namely that he gave me the premiums for Mr. Young, and I placed them in a case with a miniature silo that I carried, which was checked back from Mankato to Worthington, and there the books were lost. It is a matter of no importance and Mr. Shutz, in every respect gave the matter his personal attention, and the failure of Mr. Young to get the books was wholly mine. I have seen Mr. Young and told him to call in and I would give him mine which would answer every purpose, and you need not let it make any further trouble.

Yours truly,

*W.W.P. Connell*

**Western Farmer and Dairyman Departments.**—The Dairy. The Creamery. Poultry and Pet Stock. Garden and Orchard. Sheep. Swine. Veterinary—The Horse. Dogs and Cats. Farm Architecture. Our Young People. Legal—Questions Answered. Farm Machinery. Market Reports. Bees—Their Care, etc. Patterns—Illustrated. Queries and Answers. Home Circle. An Interesting Story. Special Articles on Various Topics of Interest to the Farmer.

R. J. Martenson

Tyler, Minn.

12.00

to Minnesota State Horticultural Society, Dr.

Remit to

**SEC'Y A. W. LATHAM,**

207 Kasota Block,

Minneapolis, Minn.,

Jan 1st 1906

Jan. 1

To subscription for "The Minnesota Horticulturist" for 1906

\$1.00

New subscribers J. P. Eriksen

Route I Tyler, Minn.

1.00  
\$ 2.00

see next page

Dear Secy. E. W. Latham,

Inclosed please find my check  
for \$2<sup>00</sup> as payment for myself and Mr. J. P. Crikser  
As plant premiums you may send No 2 of  
No 1 & 8. to me and No 4 & 5 for Mr. J. P. Crikser.

Yours truly  
R. J. Martens



March 24<sup>th</sup> 1906

The Minnesota Horticulturist  
Dear Sir

In reply to yours of  
March 23 I will say that the 15 cents  
extra for packing was sent to you  
the subscription price 1.<sup>00</sup> and  
15 cents was inclosed and sent to  
you, I have the postal receipt  
to prove it, I do not wish  
to remit, or to change my premium  
but expect you to do as you state  
in your Minnesota Horticulturist  
your Respect  
J Henry Madson



...C. W. Merritt...

## Briarwood Fruit Farm

R. F. D. No. 3

Winona, Minn. April 19 1906

A W. Leathen.

Dear Friend  
Your communication  
concerning Photos, &c  
would say you have my  
Photo. The only one I have  
at present sent last year  
is late to get in the Book  
not much love I assure you  
we have no Photo's of either  
House or Orchard. I  
certainly must attend to  
that matter, for we have  
some fine views that  
would be attractive if  
Photographed.

Cordially  
C. W. Merritt

Willow River Mn  
Mch 23/06

A. W. Latham Sec  
State Hort Socy  
Mpls Mn

Dear Sir

Answering yours of Mch 17/06  
will say I understood that Rep Knudsen  
of New Duluth selected a plant premium  
for me when he remitted my sub  
for '06. However, if he did not, please send  
#6 & 4

By the way, I did not select  
a premium for the two new members  
I secured. Rep Knudsen & Mrs. Bluesing  
If not too late, kindly send me Goff's  
Principles of Plant Culture,

Yours truly

J. B. Millard

ord 3.23.06

25

Also send two plant premiums  
for M. F. Wrede same address  
Buffalo Lake. No. 11.

Six apple seedling  $2\frac{1}{2}$  to 3 ft.  
grown from seed of choice varieties.  
No 12. Six Plums of choice  
varieties. Where money order  
was taken thought it was 75  
for packing but see now it is  
only 30 so if there are any of  
those plums for sale send  
~~same~~ for money over.  
Paid fee at annual meeting.

Winnipeg March 7/06

A. W. Latham Esq 207 Kosota Bldg Minneapolis Minn  
Sir find enclosed \$1.00 one dollar for membership  
fee to Minnesota State Horticultural Society for 1906  
for Malcolm McPhail

Clandeboye P.O.  
↓  
Manitoba

also send him Premiums No 4 and 5 and Annual Report

and please send me Greeks amateur fruit-grower  
also Premiums No 5 and 13 also a package of apple  
seeds

I Remain your truly

S. R. Mighton  
P.O. Box 524 Winnipeg  
Man

5

Subscription to start Jan. 06

IN SENDING IN NAME OF NEW MEMBER PLEASE FILL OUT AND USE THE FOLLOWING FORM:

Mar 1<sup>st</sup> 1906

25

A. W. LATHAM, Sec'y Minnesota State Horticultural Society,

Dear Sir:

Please enter the name of J. L. Neish

Post-office Carlyle, Sask., as a new member of the society, for which I enclose \$1.00, the annual fee. Besides the Report and Magazine, you may send him Plant Premiums Nos. 4 & 5.

For my premium in securing this new member please send me the following book: The Horticulturists Rule Book

Signed Richard McComb

Post-office Brandon

SEND TO THE SECRETARY FOR MORE OF THESE FORMS AS NEEDED.

## Will You Send

**one or more new members** in 1906, and help bring the number up to 2,500 this year?

## New Members Will Get

**"Trees, Fruits and Flowers of Minnesota,"** cloth bound, 537 pages.

**"Minnesota Horticulturist,"** 12 issues, 40 pages each.

**Two Plant Premiums,** his selection.

## You Will Get

**Valuable Horticultural Books** for your library (see list of Premium books in society folder) and an increased interest in the society from helping to enlarge its field of usefulness.

## Distribute the 1905 "Horticulturists"

and the "Society Folders" in getting new members.

## Please Do Not Forget

That in accepting the volume, "Trees, Fruits and Flowers of Minnesota," for 1905 it is **with the understanding** that you are to distribute the "Minnesota Horticulturists" received the previous year. You have no need to retain them, as they will be found bound in with the volume referred to above.

This distribution is a **very important part** of the work each member can do in teaching "right horticulture" and incidentally increasing the strength of the society.

Any number of the "Society Folders" can be had of the Secretary.

OKLAHOMA  
AGRICULTURAL AND MECHANICAL COLLEGE  
STILLWATER, OKLAHOMA  
A. C. SCOTT, PRESIDENT

DEPARTMENT OF HORTICULTURE  
O. M. MORRIS, PROFESSOR

Stillwater, Okla., March, 1, 1906.

Mr. A. W. Latham,  
Minneapolis, Minn.

Dear Sir:-

Has your State Horticultural Society published any reports?  
If so, how can we obtain copies of the same for our College Library?

Yours truly,

DL/OMM





Telephone 102.  
P. O. Box 81.



Everything in Fruits,  
Forestry Trees,  
Ornamental Shubberg,  
Perennial Flowers  
and Bulbs.

BRANDON, MAN. Feb., 9th., 06 190.....

A.W.Latham Esq.,  
Minneapolis Minn.

Dear Sir,--

I sent in a subscription of A.F.Campbell, Brandon but did not receive any acknowledgement. It was registered, if it did not reach you let me know and I will have P.O.trace. Kindly send me some more Application blanks. for Membership.

What premium do you allow on Life Members. I think I can secure one here at least.

Yours truly,

A handwritten signature in cursive script, appearing to read 'W. McComb'. The signature is written in dark ink and is positioned below the typed name 'Yours truly,'.

Ramsey Minn.

February 8 - 1904

Mr. A. W. Latham

Minneapolis Minn.

Sir, I select Premium No. 9,  
and No. 10. (Three Golden Willow Cut)  
And (Six Seedling Apple of the  
Herkins Seedlings) I send 15¢  
Stamps for postage.

A. T. McKibben  
Ramsey Minn.

LYCURGUS R. MOYER,  
Chippewa County Abstract Office.  
Attorney at Law.  
MONTEVIDEO, - MINN.

Nov 9, 1905,

A. W. Latham, Secy.,  
Minneapolis, Minn.,

Dear Sir:- Your letter of the 7th inst is received. I think the idea you suggest of offering a large premium for a maritorous seedling apple to be rewarded eight or ten years from now, a good one. In case such a premium is offered I presume we shall have to begin setting aside a fund out of which to pay it. The present price price of apples is such as to make it seem as though a good Minnesota winter would be an extemely desirable acquisition.

Yours very truly,

*Lycurgus R. Moyer*

Telephone 102.

P. O. Box 81.



Everything in Fruits,  
Forestry Trees,  
Ornamental Shubberg,  
Perennial Flowers  
and Bulbs.

BRANDON, MAN. Feb., 14th. 07

A.W.Latham Esq.,  
Minneapolis Minn.

Dear Sir,--

Your favor fo the 12th to hand but although you acknow-  
ledge the receipt of the remittance for Mr A.F.Campbell yet I have  
not received the premium.Am.Fruit Growing which I selected , The  
hook on Forestry by Prof. Green cam eto hand yesterday and I think  
it will be very ineresting as well as instructive.

I will endeavor to get a couple more annual members

Yours respectfully,

A handwritten signature in cursive script, appearing to read 'R. McComb'. The signature is written in dark ink and is positioned below the typed name 'Yours respectfully,'.

A POUND OF  
FANCY MAPLE-WOOD  
BUTTER

Is made up of Sixteen Ounces, One each of Wisdom, Precaution, Concentration, Cleanliness, Determination, Prevention, Care, Forethought, Discrimination, Accuracy, Judgment, Commonsense, Patience, Fairness, Neatness, Honor.

**Maple-Wood  
Dairy Farm,**

**F. B. McLERAN, Prop.,  
Wrenshall, Minnesota.**

Small Fruits, in Season,

First-Class Vegetables,

Jersey and Guernsey Cattle,

Barred Plymouth Rock Poultry,

Poland China Hogs,

For Sale at Fair Prices.

Wrenshall, Minn., Feb. 12 1906

Secty Lathou

Minneapolis, Minn.  
Dear Friend;

We have succeeded in organizing a farmers society here which is now in full force and we have had two very successful meetings, all showing unusual interest.

Name: "Farmers Progressive Ass.  
of Wrenshall."

Officers, P. M. Ferguson, Backer Minn  
Pres.

F. B. McLeran - Wrenshall, Secty.  
Chas. Dickinson - " Treas.

Membership limited to twelve members for the first year. - Meet once a month; thus meeting once a year only at each members.

Have three or four public meetings a year at the town hall when all are asked to attend on a special pro-

A POUND OF  
FANCY MAPLE-WOOD  
BUTTER

Is made up of Sixteen Ounces, One each of Wisdom, Precaution, Concentration, Cleanliness, Determination, Prevention, Care, Forethought, Discrimination, Accuracy, Judgment, Commonsense, Patience, Fairness, Neatness, Honor.

# Maple-Wood Dairy Farm,

F. B. McLERAN, Prop.,  
Wrenshall, Minnesota.

Small Fruits, in Season,

First-Class Vegetables,

Jersey and Guernsey Cattle,

Barred Plymouth Rock Poultry,

Poland China Hogs,

For Sale at Fair Prices.

Wrenshall, Minn.,

190

think you will hear more of us in  
the future. Yours truly  
Progressive Farmer Ass - of Wrenshall,  
F.B. McLeran

I have decided to add one acre more  
to the trial and experimental orchard here.  
This will allow me to extend the work  
considerable. So if you have any thing  
more for me to try I am ready for it.

I get inquiries, each day from all over  
the N.W. asking about fruit etc. Some day  
had rec'd 20 letters. Many have con-  
municated forwrdly on my report a U. Rec.  
This, of course, is pleasant to me.

I have now gotten together a fine lot  
of extra choice apple seed and shall plant  
them and care for them. Will you please  
send me 6 Hortensians for Feb. also some  
of the road folders - about 20 - and about 12  
application blanks for the seedling contest?

Your sincere friend  
F. B. McLeran

A POUND OF  
FANCY MAPLE-WOOD  
BUTTER

Is made up of Sixteen Ounces, One each of Wisdom, Precaution, Concentration, Cleanliness, Determination, Prevention, Care, Forethought, Discrimination, Accuracy, Judgment, Commonsense, Patience, Fairness, Neatness, Honor.

# Maple-Wood Dairy Farm,

F. B. McLERAN, Prop.,  
Wrenshall, Minnesota.

Small Fruits, in Season,

First-Class Vegetables,

Jersey and Guernsey Cattle,

Barred Plymouth Rock Poultry,

Poland China Hogs,

For Sale at Fair Prices.

Wrenshall, Minn., Feb. 18 1906-

A. W. Latham, Secy.

Minneapolis, Minn.

Dear Sir: Yours of the 17 to hand.

Last year I wrote to Prof. Housen and not getting an answer I wrote again. The only answer to the second letter was a circular list of what they had for sale.

I wrote to him again this year, over a month ago and have, as yet had no response. I had pleasant talk with him at both the annual meetings and he even talked of coming to see me & take a hunt among the wild fruits. I do not understand why he does not answer.

Yrs. I did leave a lot there, but, as it is not worth the expense you will hardly dispose of it or you may see fit.

I note your advice regarding apple seed, you will see how me few turn to them.

Your friend  
F. B. McLeran

A POUND OF  
FANCY MAPLE-WOOD  
BUTTER

Is made up of Sixteen Ounces, One each of Wisdom, Precaution, Concentration, Cleanliness, Determination, Prevention, Care, Forethought, Discrimination, Accuracy, Judgment, Commonsense, Patience, Fairness, Neatness, Honor.

# Maple-Wood Dairy Farm,

F. B. McLERAN, Prop.,  
Wrenshall, Minnesota.

Small Fruits, in Season,

First-Class Vegetables,

Jersey and Guernsey Cattle,

Barred Plymouth Rock Poultry,

Poland China Hogs,

For Sale at Fair Prices.

Wrenshall, Minn.,

190

gram will be prepared with some speaker from away as a special number. The entire membership of twelve is filled and several applications had to be refused for this year.

A list of Vegetables + Fruits is issued recommended for this vicinity is issued + can be had by any person sending a 2¢ stamp to the Dept. Also have Question box. Membership fee \$1.00 per year.

Following is our next program which may be of interest to you.

1. Seeds:— J. M. Ferguson—(Mr. F. has 40-75 of vegetables each year—very successful.)
2. The Farmer's Home Fruit Garden—J. B. Miller.
3. Keeping Farm accounts + Cos. Stickney—(Mr. S. is our town-clerk also a practical Book keeper)
4. <sup>Fitting</sup> ~~Preparing~~ tools for Spring Work—A. Hibbert—(Mr. H. is a practical Blacksmith + good farmer)
5. Possibilities of this section as a stock Country—J. O. Soly, (Mr. S. is an old stock raiser formerly of Elbo Lake, Minn.)

A POUND OF  
FANCY MAPLE-WOOD  
BUTTER

Is made up of Sixteen Ounces, One each of Wisdom, Precaution, Concentration, Cleanliness, Determination, Prevention, Care, Forethought, Discrimination, Accuracy, Judgment, Commonsense, Patience, Fairness, Neatness, Honor.

# Maple-Wood Dairy Farm,

F. B. McLERAN, Prop.,  
Wrenshall, Minnesota.

Small Fruits, in Season,

First-Class Vegetables,

Jersey and Guernsey Cattle,

Barred Plymouth Rock Poultry,

Poland China Hogs,

For Sale at Fair Prices.

Wrenshall, Minn.,

190

We plan to have each program apply to those things that are of especial interest at that month of the year.

It was impossible to organize a strictly Hort. society as this vicinity is, as yet, too new. But we are going to push Hort. all our own.

No we should ~~not~~ like to become an auxiliary to the State Society. Can we. If you can let us in at 25¢ per head as you do local Hort Societies we will be willing to omit all the premiums and, I think, all will join.

While we are not a Hort Society in name I doubt if any local society in the state will do more to push Hort. than we.

At what figure can you furnish us 12 "Am. Fruit Growing" by S. B. Green - such as you send out as premiums?

We have organized for business, right from the word "go." And I

SUNNYSIDE STOCK FARM  
**LARGE YORKSHIRE HOGS**  
HONEY AND BEES      ROUEN DUCKS

1.00  
/

R. F. D. NO. 5

MADELIA, MINN. Feb. 17 1906

Mr. A. W. Satham,  
 Secy. M. P. Minn.,  
 Dear Sir:—

I enclose a one dollar check to renew the membership of my father, W. W. McLaughlin for 1906. As prizes you may send (1) cuttings of the Pomona current, and one Beta rope if not exhausted, & so send (2) three Columbian raspberries. Remember the name is W. W. McLaughlin and not my initials,

Truly yours,  
 U. A. McLaughlin

1.17

Spring Valley Feb 12, 1906

Clarence Wedge Albert Leela Minn

Dear Friend Wedge

I write you at this time to ask permission to join the Plant Breeders Auxiliary of the Minn. State Horticultural Society. It is the opinion of the writer that our State Society has arrived at the proper stage of development where an auxiliary of this kind may be the means of accomplishing great good along the lines of crossing, propagating, and seed planting of our different fruits, adapted to the north west. Heretofore we have had none or but very few varieties worthy of the name as a foundation to work upon. But now as I look at it - we are just beginning to see our way out of the woods in this matter and the hope is that we may accomplish much. It is pretty late for the writer at 75 years to begin to plant fruit seed, but I am going to begin, and if I do not live to see the fruits thereof some one else will. My oldest Orchard consists of 75 Trees standing on about  $\frac{5}{8}$  of an acre of ground the varieties

are Wealthy, Duchess, P. Greening, Malinda,  
Quincy, N. W. Greening, Nelson Hibernial & C  
Those above varieties must be pretty well fertil-  
ized as there is about 40 Colonies of Bees kept  
from year to year just one block away  
I am relying on those Bees for this years plan-  
ting of seed. After this year I intend that the  
seed will be of my own crossing provided that  
the writer knows enough to make the cross.  
I have Yahuké seed that I intend to plant this coming  
spring. I have received Diploma and Bronze  
medal as premium on Plums at the St Louis  
Exposition. am going to try Plum crossing  
this coming spring also.

Very Respectfully

O. W. Moore

Telegraph Orders for  
Funeral Flowers our Spe-  
cialty. Perishable goods  
shipped otherwise than  
by express travel at Pur-  
chaser's risk.

ESTABLISHED 1865.

Store and Greenhouses  
Closed After 12 Noon Sundays.

# Mendenhall, The Florist,

DEALER IN

Plants, Cut Flowers, Bulbs and Seeds.



TELEPHONE: { CITY STORE, 1165-2  
GREENHOUSES, 1165-3  
RESIDENCE, 1165-4

Minneapolis, Minn., 22 July 1906

A. W. Latham

friend

I have a number of  
the annual reports of the  
Horticultural Society - that  
as I am growing old I do  
not want.

I do not want to burn  
them - what can I do with  
them

Yours

W. Mendenhall



THE SPACE ABOVE IS RESERVED FOR POSTMARK.

POSTAL CARD

THE SPACE BELOW IS FOR THE ADDRESS ONLY.



*A. W. LATHAM,*

*Sec'y Minn. State Hort. Soc'y,*

*207 Kusota Block,*

*Minneapolis, Minn*

Dear Mr Latham.

I think the word must  
be "Anisette" — at least that  
tree is identical with the dutchers

Yours truly

LeBelkoye

IN SENDING IN NAME OF NEW MEMBER PLEASE FILL OUT AND USE THE FOLLOWING FORM:

Jan 26 1906

A. W. LATHAM, Sec'y Minnesota State Horticultural Society,

Dear Sir:

Please enter the name of *A. F. Campbell*,

Post-office *Brandon Man.*, as a new member of the society, for which I enclose \$1.00, the annual fee. Besides the Report and Magazine, you may send him Plant Premiums Nos. *4*.

For my premium in securing this new member please send me the following book: *Amateur Fruit Growing*

Signed *Richard Melomb*

Post-office *Brandon Man.*

Send me more slips

Magazine to start with  
January - June, 06.

SEND TO THE SECRETARY FOR MORE OF THESE FORMS AS NEEDED.

## Will You Send

one or more new members in 1906, and help bring the number up to 2,500 this year?

## New Members Will Get

"Trees, Fruits and Flowers of Minnesota," cloth bound, 537 pages.

"Minnesota Horticulturist," 12 issues, 40 pages each.

Two Plant Premiums, his selection.

## You Will Get

Valuable Horticultural Books for your library (see list of Premium books in society folder) and an increased interest in the society from helping to enlarge its field of usefulness.

## Distribute the 1905 "Horticulturists"

and the "Society Folders" in getting new members.

## Please Do Not Forget

That in accepting the volume, "Trees, Fruits and Flowers of Minnesota," for 1905 it is with the understanding that you are to distribute the "Minnesota Horticulturists" received the previous year. You have no need to retain them, as they will be found bound in with the volume referred to above.

This distribution is a very important part of the work each member can do in teaching "right horticulture" and incidentally increasing the strength of the society.

Any number of the "Society Folders" can be had of the Secretary.

THE GRANT HOUSE

H. A. OSWALD, PROP.



WASECA, MINN.

1 / 31

1906

Secy A. W. Latham.

2107 Kasota Block Mpls  
My dear Mr Latham.

I merely write to say that I am making at each of our meetings at the close of both sessions a personal appeal for your society. We hope it will show improved business. Our meetings are very large, in fact measured by the capacity of the hall as usual.

Very truly yours  
W. W. True Cornell.

Any suggestions it may be your pleasure to suggest relative to improving the work for your society will be gladly received.

# THE GRANT HOUSE

H. A. OSWALD, PROP.



WASECA, MINN. .... 190 .....

in planning to Sunday at  
Mankato. There is unusual  
interest in Horticulture and  
Agricultural lines. I look  
to see greatly improved  
Conditions

truly Yours  
W. W. R. D. D. D. D.

AGENTS FOR THE  
WORKS ISSUED BY THE UNIVERSITIES  
OF CAMBRIDGE (ENGLAND), COLUMBIA (NEW YORK)  
MESSRS. MACMILLAN & CO., LTD.,  
MESSRS. GEORGE BELL & SONS,  
BOHN'S LIBRARIES,  
MESSRS. A. & C. BLACK  
AND  
MESSRS. WHITTAKER & CO.

# The Macmillan Company,

PUBLISHERS,

64-66 Fifth Avenue,

New York, Feb. 3, 1906. 1905

Mr. A. W. Latham,

Minneapolis, Minn.

Dear Sir:-

We are in receipt of your favor of the 31st ultm., and in reply would say that we are unable to execute your orders for Bailey's Plant Breeding, as this book is now reprinting and impossible for us to name a date of publication. We are filing your order for this book, and will make delivery as soon as possible unless you see fit to countermand order in the meantime.

Thanking you for past favors, we are,

Yours very truly,

THE MACMILLAN COMPANY.

*H. Penman*  
Subscription Dept.

A POUND OF  
FANCY MAPLE-WOOD  
BUTTER

Is made up of Sixteen Ounces, One each  
of Wisdom, Precaution, Concentration,  
Cleanliness, Determination, Prevention,  
Care, Forethought, Discrimination, Ac-  
curacy, Judgment, Commonsense, Patience,  
Fairness, Neatness, Honor.

# Maple-Wood Dairy Farm,

F. B. McLERAN, Prop.,  
Wrenshall, Minnesota.

Small Fruits, in Season,  
First-Class Vegetables,  
Jersey and Guernsey Cattle,  
Barred Plymouth Rock Poultry,  
Poland China Hogs,  
For Sale at Fair Prices.

Wrenshall, Minn., Jan. 24 1906,

R. W. Lotham, Secy.

Minneapolis, Minn.

Dear Friend: Will you please send  
my by return mail, if convenient,  
what information you can regarding  
the organizing of a Local Hort.  
Society-

I have copy of Constitution in  
my Report of 1903.

Let me know what relation we  
would be to the State Society, if  
we would receive any aid of any  
kind, and if so, what?

Thanking you in advance  
for the favor I am

Yours truly  
F. B. McLeran

IN SENDING IN NAME OF NEW MEMBER PLEASE FILL OUT AND USE THE FOLLOWING FORM:

*Jan 27th* 190*6*

A. W. LATHAM, Sec'y Minnesota State Horticultural Society,

Dear Sir:

Please enter the name of *W. H. Lauer*

Post-office *Quamoose W.D.*, as a new member of the society, for which I enclose \$1.00, the annual fee. Besides the Report and Magazine, you may send him Plant Premiums Nos. *4 and 5*

For my premium in securing this new member please send me the following book: *Forestry of Minnesota by S. B. Green*

Signed

*W. H. Lauer*

Post-office

SEND TO THE SECRETARY FOR MORE OF THESE FORMS AS NEEDED.

## Will You Send

one or more new members in 1906, and help bring the number up to 2,500 this year?

## New Members Will Get

**"Trees, Fruits and Flowers of Minnesota,"** cloth bound, 537 pages.

**"Minnesota Horticulturist,"** 12 issues, 40 pages each.

**Two Plant Premiums,** his selection.

## You Will Get

**Valuable Horticultural Books** for your library (see list of Premium books in society folder) and an increased interest in the society from helping to enlarge its field of usefulness.

## Distribute the 1905 "Horticulturists"

and the "Society Folders" in getting new members.

## Please Do Not Forget

That in accepting the volume, "Trees, Fruits and Flowers of Minnesota," for 1905 it is **with the understanding** that you are to distribute the "Minnesota Horticulturists" received the previous year. You have no need to retain them, as they will be found bound in with the volume referred to above.

This distribution is a **very important part** of the work each member can do in teaching "right horticulture" and incidentally increasing the strength of the society.

Any number of the "Society Folders" can be had of the Secretary.

IN SENDING IN NAME OF NEW MEMBER PLEASE FILL OUT AND USE THE FOLLOWING FORM:

Jan 27<sup>th</sup> 1906

A. W. LATHAM, Sec'y Minnesota State Horticultural Society,

Dear Sir:

Please enter the name of

Chas F Frankhauser

Post-office

Quamoose, W.D.

, as a new member of the society, for which I enclose \$1.00, the annual fee. Besides the Report and Magazine, you may send him Plant Premiums Nos.

11 & 12

For my premium in securing this new member please ~~send~~ <sup>give credit</sup> me the

following book: Cloth bound Vegetable Gardening, by S.B. Green

30 cents extra

Signed

F. J. Janner

Post-office

Quamoose, W.D.

for padding 11 & 12

enclosed

SEND TO THE SECRETARY FOR MORE OF THESE FORMS AS NEEDED.

## Will You Send

one or more new members in 1906, and help bring the number up to 2,500 this year?

## New Members Will Get

**"Trees, Fruits and Flowers of Minnesota,"** cloth bound, 537 pages.

**"Minnesota Horticulturist,"** 12 issues, 40 pages each.

**Two Plant Premiums,** his selection.

## You Will Get

**Valuable Horticultural Books** for your library (see list of Premium books in society folder) and an increased interest in the society from helping to enlarge its field of usefulness.

## Distribute the 1905 "Horticulturists"

and the "Society Folders" in getting new members.

## Please Do Not Forget

That in accepting the volume, "Trees, Fruits and Flowers of Minnesota," for 1905 it is **with the understanding** that you are to distribute the "Minnesota Horticulturists" received the previous year. You have no need to retain them, as they will be found bound in with the volume referred to above.

This distribution is a **very important part** of the work each member can do in teaching "right horticulture" and incidentally increasing the strength of the society.

Any number of the "Society Folders" can be had of the Secretary.

IN SENDING IN NAME OF NEW MEMBER PLEASE FILL OUT AND USE THE FOLLOWING FORM:

Feb. 2<sup>nd</sup> 1906.

A. W. LATHAM, Sec'y Minnesota State Horticultural Society,

Dear Sir:

Please enter the name of

E. Curtis

Post-office

Portage La Prairie, <sup>Man.</sup>

, as a new member of the society, for which I enclose \$1.00, the annual fee. Besides the Report and Magazine, you may send him Plant Premiums Nos. 4 + 9.

For my premium in securing this new member please send me the following book: Forestry of Minnesota

Signed

Richard McComb

Post-office

Brandon Man.

SEND TO THE SECRETARY FOR MORE OF THESE FORMS AS NEEDED.

Horticulturist to start with January number.

## Will You Send

one or more new members in 1906, and help bring the number up to 2,500 this year?

## New Members Will Get

"Trees, Fruits and Flowers of Minnesota," cloth bound, 537 pages.

"Minnesota Horticulturist," 12 issues, 40 pages each.

Two Plant Premiums, his selection.

## You Will Get

Valuable Horticultural Books for your library (see list of Premium books in society folder) and an increased interest in the society from helping to enlarge its field of usefulness.

## Distribute the 1905 "Horticulturists"

and the "Society Folders" in getting new members.

## Please Do Not Forget

That in accepting the volume, "Trees, Fruits and Flowers of Minnesota," for 1905 it is **with the understanding** that you are to distribute the "Minnesota Horticulturists" received the previous year. You have no need to retain them, as they will be found bound in with the volume referred to above.

This distribution is a **very important part** of the work each member can do in teaching "right horticulture" and incidentally increasing the strength of the society.

Any number of the "Society Folders" can be had of the Secretary.

FRANK MESENBURG,  
GARDENER AND FLORIST.

GARDENS: RIDGEWOOD AVENUE.

= \* \* \* \* =

ST. CLOUD, MINN., Jan 23 1906.

A. W. Sathern Secretary  
Minneapolis Minn

Dear Sir. Enclosed please  
find check for \$2.00 in  
payment for membership fee  
for Maths. Mesenburg and Frank M.  
please send the following premiums

No. 1 - 2 - 7 - 10

Yours truly  
Frank Mesenburg

A POUND OF  
FANCY MAPLE-WOOD  
BUTTER

Is made up of Sixteen Ounces, One each of Wisdom, Precaution, Concentration, Cleanliness, Determination, Prevention, Care, Forethought, Discrimination, Accuracy, Judgment, Commonsense, Patience, Fairness, Neatness, Honor.

# Maple-Wood Dairy Farm,

F. B. McLERAN, Prop.,  
Wrenshall, Minnesota.

Small Fruits, in Season,

First-Class Vegetables,

Jersey and Guernsey Cattle,

Barred Plymouth Rock Poultry,

Poland China Hogs,

For Sale at Fair Prices.

Wrenshall, Minn.,

Jan. 22 1906

Deary A. W. Latham, Minneapolis:  
Dear Friend: Yours of the 19th inst.  
recd. Subject your invitation will be O.K.  
for title of paper. Thanks for your infor-  
mation. With Best wishes I am  
Your friend  
F. B. McLERAN

IN SENDING IN NAME OF NEW MEMBER PLEASE FILL OUT AND USE THE FOLLOWING FORM:

*Jan. 22* 190*6*

A. W. LATHAM, Sec'y Minnesota State Horticultural Society,

Dear Sir:

Please enter the name of *A. Hastings*

Post-office *Gerles Iowa*, as a new member of the society, for which I enclose \$1.00, the annual fee. Besides the Report and Magazine, you may send him Plant Premiums Nos. *3 & 8.*

For my premium in securing this new member please send me the following book: *Private Fruit Growing*

Signed *S. H. McAdams*

Postoffice *Swear City Iowa*

SEND TO THE SECRETARY FOR MORE OF THESE FORMS AS NEEDED.

## Will You Send

one or more new members in 1905, and help bring the number up to 2,500 this year?

## New Members Will Get

"Trees, Fruits and Flowers of Minnesota," cloth bound, 531 pages.

"Minnesota Horticulturist," 12 issues, 40 pages each.

Two Plant Premiums, his selection.

## You Will Get

Valuable Horticultural Books for your library (see list of Premium books in society folder) and an increased interest in the society from helping to enlarge its field of usefulness.

## Distribute the 1904 "Horticulturists"

and the society folders in getting new members.

## Please Do Not Forget

That in accepting the volume, "Trees, Fruits and Flowers of Minnesota," for 1904 it is **with the understanding** that you are to distribute the "Minnesota Horticulturists" received the previous year. You have no need to retain them, as they will be found bound in with the volume referred to above.

This distribution is a **very important part** of the work each member can do in teaching "right horticulture" and incidentally increasing the strength of the society.

Any number of the "Society Folders" can be had of the Secretary.

22

↓

Lueda City Iowa Jan 22, 1905

A. W. Latham, Secy Wm. H. S.

Dear Sir,

Please find two dollars enclosed  
as the annual fee for  
A. Hastings Hered Iowa, and  
My ~~own~~ annual fee.

Send me Nos. 3 + 13 as my  
Plant-premiums.

As I am a Salesman for  
Nursery stock I could distribute  
some of the Societies Folders  
and will be glad to do so in  
Southern Wm. and Northern  
Iowa. Will also send all the new  
members I can

Yours Reif.

S. H. M'Adams

Lueda City

Iowa

✓ De  
Winnipeg May 9/16

G. W. Fatham Minneapolis Minn

Dear Sir

Find enclosed \$1.00 (one dollar) for membership for

R. D. Wilson  
P.O. Money order Department  
Winnipeg  
Man

If not too late send as Premium  
No. 11 and 12 - for which I enclose 30 Extra

and for me send greens amateur  
fruit growing. and by the way I have  
not recd the one you said you would  
send me for the last member. <sup>(McPhail)</sup> I got the  
apple Root grafts all right.

Yours truly  
S. R. Mighlton  
P.O. Box 524 Winnipeg  
Man