



Horticultural Society: Letters Received and Sent

Copyright Notice:

This material may be protected by copyright law (U.S. Code, Title 17). Researchers are liable for any infringement. For more information, visit www.mnhs.org/copyright.



Publishes a Monthly Magazine entitled "The Minnesota Horticulturist." Sent free to all members of the Society. Send to Secretary for copy of the Magazine and Folder containing the "Fruit List" for Minnesota and describing the work of the Society, its publications, methods, etc.

Minnesota State Horticultural Society,

President, SAM'L B. GREEN, St. Anthony Park.

Office (and Library) of

A. W. LATHAM, Secretary,

207 KASOTA BLDG.,

Minneapolis, Minn., 8/21/09.

Wyman Elliot,

Mpls.

Dear Friend.-

It is quite desirable that we should announce the premium list for the coming annual meeting in the September issue of our monthly. I have been looking over the list as offered last year, which you will find on page #477 of the annual report for 1908, and as far as occurs to me now this list would seem to meet the requirements fairly well.

Will you not please write me at once on receipt of this as time is short, and suggest changes which seem to you desirable, if any, so that I may if possible make such an announcement?

Everything is going well in the office as usual.

Yours cordially,

A. W. Latham
Sec'y.

(Season
Early woud's seedling (Nov 1 to Jan 1st)
Late woud's seedling " Jan 1 to May 1st")

Would it not be giving added interest, to award a first prize of \$50 a second prize of \$25 & a 3d prize of \$10 to the seedlings making highest score in woud's seedling?
I think the rest of list is all right

Respectfully

Wyman Elliot

This is solicited
by Bert-Elk member
and goes to his
brother, who is a
dentist, and is
much pleased with
their books and
magazine
yours truly
Bert-Elk

✓ 50
sent books
Sept. 25-09

Sherburn Minn.
Sep. 20 - 1909

Gentlemen:

Inclosed please

find one and $\frac{50}{100}$ dollars
for which send to the
following address.

membership ^{certificate} to State Horticulture
Society. Greens Amelur Fruit growing
& Greens Vegetable gardening.

Addressed to Mr. B. F.
Elk No. 501, Trust-building
Rockford, Ill.

THE LAKE SHORE NURSERY

MARTIN FRIDHOLM, Proprietor.

HARDY NORTHERN GROWN

Nursery & Stock

Office: 1013 Park Street
no 1



Albert Lea, Minn.

Sept 6th 1909

O. W. Latham, Minneapolis
Minn.

Dear sir!

I send you under separate
cover an apple which I
think will interest you to
it is a product of one
of the so called Gideon
Seedling and it part as
premium in the spring of
1900, I received two of
them both of which were
large and healthy trees.
One of them produced
its first apples when
4 yrs old, and has borne
a good crop every year, and
this year produced more
than a Bush of apples.

THE LAKE SHORE NURSERY

MARTIN FRIDHOLM, Proprietor.

HARDY NORTHERN GROWN

Nursery & Stock

Office: 1013 Park Street



Albert Lea, Minn.,

190

no 2

The other tree has not
shown even a blossom
yet. The specimens sent
you are not the largest
nor the smallest, just
an average some of them
are better colored.
Tree are apparently very
hardy can free from
blight. Fine form
medium spreading, no
crookneck. as for
very strong and tough
limbs which bent
down under the heavy
load so that the apples
were resting on the ground.
Thinking it will arrive in
good condition yours truly
Martin Fridholm



The Dodge County Nursery,

W. E. FRYER, PROP.

BOTH PHONES (Northwestern, call Kasson.
Tri-State, call Mantorville.

Located on the Main Thoroughfare
between Kasson and Mantorville.

Mantorville, Minn., Oct 12th 1900

Mr A.W.Latham,
Minneapolis, Minn.

Dear Sir:-
I notice you have not used any of the pictures I sent you.
I have a new picture of my grounds, including my storage building which
is 102 ft long &c. It shows more of a front view and is the best
picture I ever had. I just enlarged my storage building the past
summer.

I would like to hear from you and if you can use it I will send it
to you at once. Rather wintry today.

Yours truly,
W.E.Fryer.

1910

J. J. 100

Janesville Sep 11 1909
Mr. Satham

Dear Sir

pleas find inclosed
One Dollar fore my
renewel. for the good
of the society

I have ~~100~~ 150 Apple trees
that ~~are~~ bearing they look fine
we always have had plenty
Apples from the time that
~~they were~~ three years old.

80 of these ^{trees} were planted
in a Hog Pasture this
Orchard is 9 years old this is
a fine Orchard. fore
windbrake I planted 1300
soft maple that is 4.

rows maple and one row
 Norway Spruce on the south
 side on the west side
 two rows Norway Spruce
 and ^{two} rows B. pedder
 on the north side one
 row Spruce, this makes
 a good windbreak
 I planted the Spruce
 same time that I planted
 the Apple trees. they are
 20 to 30 foot high.

Respectfully
 Julius Frantz

Mr. Elwin

✓ 1.00

A. Y. MERRILL

ATTORNEY AT LAW

337 LUMBER EXCHANGE

313-14 LUMBER EXCHANGE

MINNEAPOLIS, MINN.

Glencoe Aug 27-04.
A. W. Lathrop.

Dear Sir as Superintendent
at State Fair of Fruits & Flowers
I wish to Exhibit a No of kinds
of Apples & Plums also raised
from Grafting onto the native
which are very fine. The Wolf
Scout Surprise forrest Garden
& the Wyant, the most of the Trees are
heavily loaded. would so your
Eys good too look at them, are
afraid they will not get ripe
by fair time. but will Exh
ibit if not fully ripe—

over

P.S. yours
- Truly
- F. O. Ford
- Box #2
- Glenview

Will want Tags for 35 kinds
of Plums - The Wolf - Secota
Surprise - Forest Guardian -
Royal Mt. Apples to be Tagged
Pk Suchers - Pk Wealthy -
Plate Kibernals - Plate Okaberas.
Plate McMahon & Plate of Seedling
15 years old - 18 inches up from ground
- ~~measures~~ 26 inch in Circum-
ference never known to bright
Please, give instructions & the
best way to pack in order to
keep from bruising & oblige
if I ship from here will fruit
go direct to his grounds or
will I have to look after same

COUNTY OFFICERS

C. H. MEYER - AUDITOR
 FRED SEEBACH - TREASURER
 P. J. LUNDQUIST - SHERIFF
 CHAS. S. DANA - CLERK OF COURT
 GUST E. FREEMAN, REGISTER OF DEEDS
 AXEL HALLER - JUDGE OF PROBATE
 WM. M. ERICSON - COUNTY ATTORNEY
 R. L. C. GEIB - CORONER
 J. M. SIMMONS - SURVEYOR
 JULIUS BORAAS - SUPT. OF SCHOOLS
 J. F. MERRILL, COURT COMMISSIONER

OFFICE OF

Gust E. Freeman
 Register of Deeds
 Goodhue County

COUNTY COMMISSIONERS

FRED A. SCHERF - RED WING
 CHAIRMAN
 P. N. ALLEN - CANNON FALLS
 VICE CHAIRMAN
 W. R. CALLISTER - SKYBEEG
 P. P. FINSTUEN - ZUMBROTA
 A. H. DICKE - RED WING

Red Wing, Minn.

June 28th 1909

A. W. Katham, Esq.,
 Minneapolis, Minn.

Dear sir:— Again I take the liberty of coming to you for information. I wish to know if it would be dangerous to feed cattle or horses grass or hay that has been grown in and around my orchard after having sprayed my trees. I have used the Bordeaux mixture and at times have added white arsenic and for the last two sprayings have used arsenate of lead, instead of the white arsenic. In fact the last time I used nothing but the arsenate of lead in the water. Of course when spraying the trees more or less of it the dope will come on the grass growing between the trees. I have not dared feed the hay until having heard from you.

Thanking you in advance I am,

Fraternally Yours,
 Gust. E. Freeman

THE UNIVERSITY OF MINNESOTA,
CYRUS NORTHROP, LL. D. PRESIDENT.
DEPARTMENT OF AGRICULTURE.
E. W. RANDALL, DEAN.
SCHOOL OF AGRICULTURE.
D. D. MAYNE, PRINCIPAL.
J. A. VYE, SECRETARY.

River Falls Wis.

~~St. ANTHONY PARK, ST. PAUL, MINN.~~

25
6-23-09
June 21, 09

Dear Father
Mr Sir,

Found enclosed 25[¢], for
dinner at Hort. Meeting -
June 29.

Yours truly,

A. L. Ewing.

River Falls Wis.

HOWARD LAKE AND VICTOR NURSERIES

ESTABLISHED 1887

W. H. EDDY, Proprietor

Hardy Trees, Shrubs and Bulbs

HOWARD LAKE, MINNESOTA

LONG DISTANCE TELEPHONE

We Grow Trees Adapted to the North and West

Wholesale Prices on Nursery Stock Furnished on Application

240 Acres



REFERENCES
Bank of Howard Lake

German American
State Bank of Howard
Lake

Our Customers



A. W. Latham Secy Howard Lake, Minnesota, May 14 1909

*Mypls.
Dear friend,*

✓ 50

*Please enter H. T. Gilbertson, of
Erskine, Minn., as a member into our
Port Society for this year,
find inclose check of 50¢ for the
payment of same. He gave his
membership as a premium for an order
of nursery stock.*

*Gratefully Yours
W. H. Eddy*

Hardest Varieties of
Fruit Trees,
Evergreens,
Ornamentals,
and Small
Fruit Plants.

References:
Bank of Mantorville;
National Bank of
Kasson,
Kasson, Minn.

~*~

Dodge County Nursery,

W. E. FRYER, PROP.

~*~

Located on the Main Thoroughfare
between Kasson and Mantorville.

~*~

Northwestern Phone, Call Kasson.
Tri-State Phone, Call Mantorville.

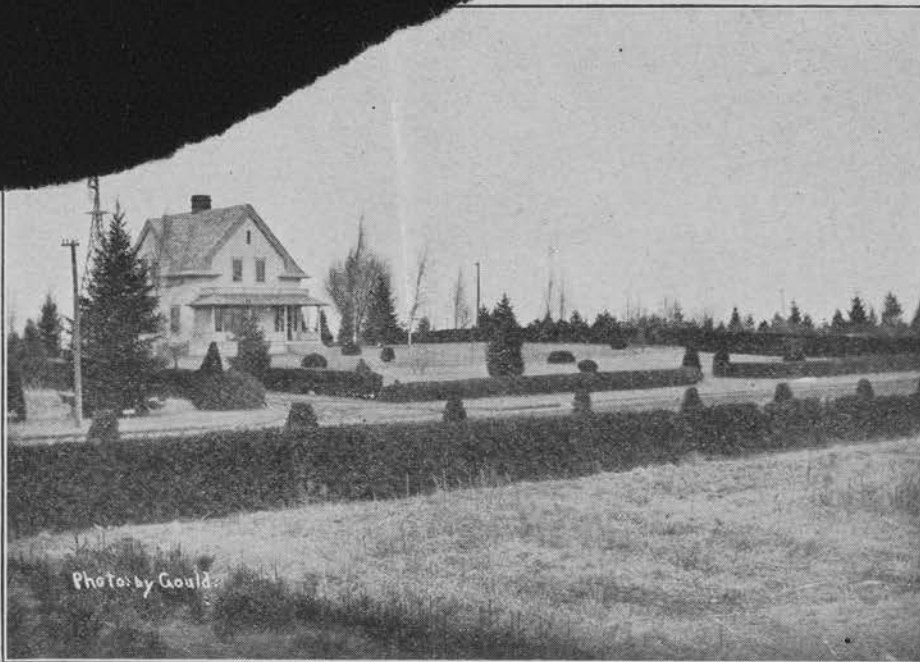


Photo by Gould.

"OUR HOME."

Mantorville, Minn., May 17, 1909

Mr A. W. Latham,

Minneapolis, Minn-

Dear Sir:-

Your favor of the 13th duly received. I will send you a picture of my grounds, and you can make it the size that will suit you best. I am also sending you some snap-shots of different things. I will write on the back what they are. You can return the large one and keep the rest.

The coming summer I will be able to take some better views.

I have 25 varieties of German Iris, 75 of Peonies and a number of named phlox. I am quite a "posy" man, liking that branch of the business best.

I will take the space in the Horticulturist, but not till the July number. When will the copy have to reach you?

I wish you would come down here and see me the last of June when peonies are their best. The C.G.W. reaches here at 8:20 P.M. and you could go back the next day via Kasson and Dodge Center. I will also

meet you at the train if you can come. I have never been able to walk without a cane since I was paralyzed over two years ago, but I am the "boss" and tell each man what to do.

The pictures go under separate cover.

Respectfully,
W. E. Fryer.

Howard Lake. Minn
May 5/6 1909

A. W. Latham Esq
Minneapolis Minn

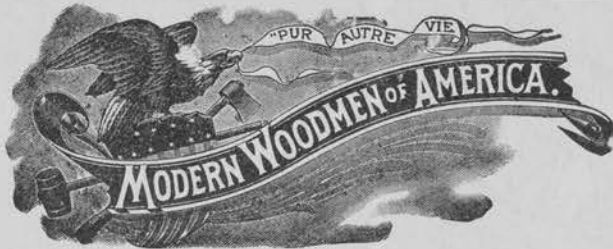
Dear Sir -

On June 1st enclosed
for which please enter
J. E. Nelson. Invea. Minn
as a member for one year
of the Minn. State Horticultural
Society - Yours Truly
A. E. New

Fraternal Protection.

Cheapest and Best.

Office of the Clerk



KENNEDY CAMP, No. 5047

JOHN F. BROWN, Consul
HERMAN BERG, Banker
CARL ERLANDSON, Clerk



Camp Meets on
First and Third Wednesdays
of the Month

Kennedy, Minn. May 10, 1909. 190

A. W. Latham, Sec'y.,
Minneapolis, Minn.

Dear Sir:-

I have two new members to my credit, namely L. Melgaard, and John Gustafson, and I enclose herewith check for 50¢ for which please send me the "Pruning Book" by L. H. Bailey, latest edition.

When I renewed my membership for 1909 I selected plant premiums Nos. 3 & 4, but notice you have sent 3 & 13. If you can conveniently send me No. 4 Four root grafts of University apple, I shall be very much obliged to you.

Thanking you for past favors, I am,

Yours very truly,

Carl Erlandson



IN SENDING IN NAME OF NEW MEMBER PLEASE FILL OUT AND USE THE FOLLOWING FORM:

April 24th ✓ *1909*

A. W. LATHAM, Sec'y Minnesota State Horticultural Society,

Dear Sir:

Please enter the name of *Axel Haller*

Post-office, *Court House, Red Wing*, as a new member of the society, for which I enclose \$1.00, the annual fee. Besides the Report and Magazine, you may send him plant premiums Nos.

For my premium in securing this new member please send me the following book: *Amateur Fruit Growing*

Signed *Gust. E. Freeman*
Post-office *Red Wing, Minn.*

SEND TO THE SECRETARY FOR MORE OF THESE FORMS AS NEEDED.

Will Not You Send

In one or more new members in 1909,
and help bring the number up to 3,000
this year?

New Members Will Receive

"Trees, Fruits and Flowers of Minnesota," cloth bound, 537 pages.

"Minnesota Horticulturist," 12 issues,
40 pages each.

Two Valuable Plant Premiums, their
selection.

You Will Receive

Valuable Horticultural Books for your
library (see list of Premium books in
society folder) and an increased interest
in the society from helping to enlarge
its field of usefulness.

Don't Fail to Distribute the 1908 "Horticulturists"

and the "Society Folders" in getting
new members.

Any number of the "Society Folders"
can be had of the Secretary.

Please Do Not Forget

that in accepting the volume, "Trees,
Fruits and Flowers of Minnesota" for
1908, it is **with the understanding** that
you are to distribute the "Minnesota
Horticulturists" received the previous
year. You have no need to retain them,
as they will be found bound in with the
volume referred to above.

The distribution is a **very important**
part of the work each member can do
in teaching "right horticulture" and
incidentally increasing the strength of
the society.

Get Busy!

COUNTY OFFICERS

C. H. MEYER - AUDITOR
 FRED SEEBACH - TREASURER
 P. J. LUNDQUIST - SHERIFF
 CHAS. S. DANA - CLERK OF COURT
 GUST E. FREEMAN, REGISTER OF DEEDS
 AXEL HALLER - JUDGE OF PROBATE
 WM. M. ERICSON - COUNTY ATTORNEY
 H. L. C. GELB - CORONER
 J. M. SIMMONS - SURVEYOR
 JULIUS BORAAS - SUPT. OF SCHOOLS
 J. F. MERRILL, COURT COMMISSIONER

OFFICE OF

Gust E. Freeman
 Register of Deeds
 Goodhue County

COUNTY COMMISSIONERS

FRED A. SCHERF, - RED WING
 CHAIRMAN
 P. N. ALLEN, - GANNON FALLS
 VICE CHAIRMAN
 W. R. CALLISTER - SKYBERG
 P. P. FINSTUEN - ZUMBROTA
 A. H. DICKE - RED WING

Red Wing, Minn. April 24th 1909

A. N. Ratham, Esq.,
 Secy Minn. State Horticultural Society,
 Minneapolis, Minn.

My dear sir: - Enclosed please find another subscription to your Society. Also one dollar as membership fee. I would be very much obliged to you if you would give me in detail the formula to be used in spraying apple trees for wormy apples. Also style of pump to be used in putting it on and where it can be purchased.

I have read of so many different formulas that I am at a loss to know which is the best.

Fraternally yours,
 Gust. E. Freeman

Howard Lake, Minn

Apr 27th 1909

A. W. Latham Esq

Minneapolis, Minn

Sir-

Please find enclosed
\$1.00 enclosed and enter

J. K. Mc Guire, Montrose, Minn

as a member for one year

Yours truly

A. E. Neen

IN SENDING IN NAME OF NEW MEMBER PLEASE FILL OUT AND USE THE FOLLOWING FORM:

Kennedy, Minn. March 30, 1909. 190

A. W. LATHAM, Sec'y Minnesota State Horticultural Society,

Dear Sir:

Please enter the name of John Gustafson,

Post-office, Kennedy, Minn., as a new member of the society, for which I enclose \$1.00, the annual fee. Besides the Report and Magazine, you may send him plant premiums Nos. 3 and 4

For my premium in securing this new member please send me the following book: Accumulate

Signed

Carl Erlandson
Post-office Kennedy, Minn.

SEND TO THE SECRETARY FOR MORE OF THESE FORMS AS NEEDED.

Will Not You Send

In one or more new members in 1909, and help bring the number up to 3,000 this year?

New Members Will Receive

"Trees, Fruits and Flowers of Minnesota," cloth bound, 537 pages.

"Minnesota Horticulturist," 12 issues, 40 pages each.

Two Valuable Plant Premiums, their selection.

You Will Receive

Valuable Horticultural Books for your library (see list of Premium books in society folder) and an increased interest in the society from helping to enlarge its field of usefulness.

Don't Fail to Distribute the 1908 "Horticulturists"

and the "Society Folders" in getting new members.

Any number of the "Society Folders" can be had of the Secretary.

Please Do Not Forget

that in accepting the volume, "Trees, Fruits and Flowers of Minnesota" for 1908, it is **with the understanding** that you are to distribute the "Minnesota Horticulturists" received the previous year. You have no need to retain them, as they will be found bound in with the volume referred to above.

The distribution is a **very important part** of the work each member can do in teaching "right horticulture" and incidentally increasing the strength of the society.

Get Busy!

IN SENDING IN NAME OF NEW MEMBER PLEASE FILL OUT AND USE THE FOLLOWING FORM:

Kennedy, Minn. April 5, 1909 190

A. W. LATHAM, Sec'y Minnesota State Horticultural Society,

Dear Sir:

Please enter the name of Lauritz Melgaard

Post-office, Kennedy Minn as a new member of the society, for which I enclose \$1.00 the annual fee. Besides the Report and Magazine, you may send ~~me~~ Plant Premiums Nos. 4 and 6

For my premium in securing this new member please send me the following book: Accumulate

Signed

Post-office

Kennedy, Minn.

SEND TO THE SECRETARY FOR MORE OF THESE FORMS AS NEEDED.

Kindly be sure and send bound report for 1908.

Will Not You Send

one or more new members in 1908, and help bring the number up to 2,500 this year?

New Members Will Receive

"Trees, Fruits and Flowers of Minnesota," cloth bound, 537 pages.

"Minnesota Horticulturist," 12 issues, 40 pages each.

Two Valuable Plant Premiums, his selection.

You Will Receive

Valuable Horticultural Books for your library (see list of Premium books in society folder and an increased interest in the society from helping to enlarge its field of usefulness.

Don't Fail to Distribute the 1907 "Horticulturists"

and the "Society Folders" in getting new members.

Any number of the "Society Folders" can be had of the Secretary.

Please Do Not Forget

That in accepting the volume, "Trees, Fruits and Flowers of Minnesota," for 1907, it is **with the understanding** that you are to distribute the "Minnesota Horticulturists" received the previous year. You have no need to retain them, as they will be found bound in with the volume referred to above.

The distribution is a **very important part** of the work each member can do in teaching "right horticulture" and incidentally increasing the strength of the society.

Get Busy!

IN SENDING IN NAME OF NEW MEMBER PLEASE FILL OUT AND USE THE FOLLOWING FORM:

Apr. 28 / *1909*

A. W. LATHAM, Sec'y Minnesota State Horticultural Society,

Dear Sir:

Please enter the name of *Prof. P. O. Holland*

Post-office, *Northfield, Minn.*, as a new member of the society, for which I enclose \$1.00, the annual fee. Besides the Report and Magazine, you may send him plant premiums Nos. *1, 6 (or 4)*

For my premium in securing this new member please send me the following book: *Vegetable Gardening.*

Signed *O. J. Holland*

Post-office *Northfield Minn.*

SEND TO THE SECRETARY FOR MORE OF THESE FORMS AS NEEDED.

Will Not You Send

In one or more new members in 1909, and help bring the number up to 3,000 this year?

New Members Will Receive

"Trees, Fruits and Flowers of Minnesota," cloth bound, 537 pages.

"Minnesota Horticulturist," 12 issues, 40 pages each.

Two Valuable Plant Premiums, their selection.

You Will Receive

Valuable Horticultural Books for your library (see list of Premium books in society folder) and an increased interest in the society from helping to enlarge its field of usefulness.

Don't Fail to Distribute the 1908 "Horticulturists"

and the "Society Folders" in getting new members.

Any number of the "Society Folders" can be had of the Secretary.

Please Do Not Forget

that in accepting the volume, "Trees, Fruits and Flowers of Minnesota" for 1908, it is **with the understanding** that you are to distribute the "Minnesota Horticulturists" received the previous year. You have no need to retain them, as they will be found bound in with the volume referred to above.

The distribution is a **very important part** of the work each member can do in teaching "right horticulture" and incidentally increasing the strength of the society.

Get Busy!

IN SENDING IN NAME OF NEW MEMBER PLEASE FILL OUT AND USE THE FOLLOWING FORM:

190

A. W. LATHAM, Sec'y Minnesota State Horticultural Society,

Dear Sir:

Please enter the name of

George J. Schmitt

Post-office, *Jordan*, as a new member of the society, for which I enclose \$1.00, the annual fee. Besides the Report and Magazine, you may send him plant premiums Nos. *4 and 6, 10*

For my premium in securing this new member please send me the following book: *Popular Fruit Growing*

Signed

Oscar Englund

Post-office

Jordan

SEND TO THE SECRETARY FOR MORE OF THESE FORMS AS NEEDED.

Will Not You Send

In one or more new members in 1909, and help bring the number up to 3,000 this year?

New Members Will Receive

"Trees, Fruits and Flowers of Minnesota," cloth bound, 537 pages.

"Minnesota Horticulturist," 12 issues, 40 pages each.

Two Valuable Plant Premiums, their selection.

You Will Receive

Valuable Horticultural Books for your library (see list of Premium books in society folder) and an increased interest in the society from helping to enlarge its field of usefulness.

Don't Fail to Distribute the 1908 "Horticulturists"

and the "Society Folders" in getting new members.

Any number of the "Society Folders" can be had of the Secretary.

Please Do Not Forget

that in accepting the volume, "Trees, Fruits and Flowers of Minnesota" for 1908, it is **with the understanding** that you are to distribute the "Minnesota Horticulturists" received the previous year. You have no need to retain them, as they will be found bound in with the volume referred to above.

The distribution is a **very important part** of the work each member can do in teaching "right horticulture" and incidentally increasing the strength of the society.

Get Busy!

✓
150

Jordan, Minn.

Mar. 30, 1909.

Mr. A. W. Sathorn.

Minneapolis, Minn.

Dear sir: I enclose you the name of George Schmitt of Jordan as a new member of the Society. In case you are out one of the nos. He picked out he made a second pick. Three pyrethrum uliginosum (Autumn Daisy) I also send you 50 cents due on the Popular fruit growing book.

yours, respectfully.
Oscar Englund.

COUNTY OFFICERS

C. H. MEYER - AUDITOR
 FRED SEEBACH - TREASURER
 P. J. LUNDQUIST - SHERIFF
 CHAS. S. DANA - CLERK OF COURT
 GUST E. FREEMAN - REGISTER OF DEEDS
 AXEL HALLER - JUDGE OF PROBATE
 WM. M. ERICSON - COUNTY ATTORNEY
 R. L. C. GEIB - CORONER
 J. M. SIMMONS - SURVEYOR
 JULIUS BORAAS - SUPT. OF SCHOOLS
 J. F. MERRILL - COURT COMMISSIONER

OFFICE OF

Gust E. Freeman
 Register of Deeds
 Goodhue County

COUNTY COMMISSIONERS

FRED A. SCHERF - RED WING
 CHAIRMAN
 P. N. ALLEN - CANNON FALLS
 VICE CHAIRMAN
 W. R. CALLISTER - SKYBERG
 P. P. FINSTUEN - ZUMBROTA
 A. H. DICKE - RED WING

Red Wing, Minn. Mar. 31st 1909

A. W. Kattiam, Esq.,
 Minneapolis, Minn.

Dear sir:— Mr. F. A. Scherf whose subscription to your Society I sent in some time ago tells me that he has not as yet received Trees, Fruits and Flowers for 1908.

He would like to have it sent to him very much and you would also greatly oblige me by so doing.

Very Truly
 Gust. E. Freeman

Recd 13 Mch., Old member.