



## Horticultural Society: Letters Received and Sent

### **Copyright Notice:**

This material may be protected by copyright law (U.S. Code, Title 17). Researchers are liable for any infringement. For more information, visit [www.mnhs.org/copyright](http://www.mnhs.org/copyright).

OFFICERS

W. I. PRINCE, PRESIDENT.  
B. W. HOW, 1ST VICE PRESIDENT.  
HENRY NOLTE, 2ND VICE PRESIDENT.  
G. A. EVEREST, TREASURER.  
H. V. EVA, SEC. & ASST. TREAS.



DIRECTORS

W. I. PRINCE  
B. W. HOW  
HENRY NOLTE  
E. N. WHYTE  
G. A. EVEREST  
S. H. JONES  
L. C. HARRIS  
J. A. FERGUSON  
W. H. HOYT  
D. O. ANDERSON

A.W.L.#2

Awaiting your reply, I am,

Very truly yours,

*A. B. Hostetter*  
Supt. Agr. Dept.

**OFFICERS**

W. I. PRINCE, PRESIDENT.  
 B. W. HOW, 1ST VICE PRESIDENT.  
 HENRY NOLTE, 2ND VICE PRESIDENT.  
 G. A. EVEREST, TREASURER.  
 H. V. EVA, SEC. & ASST. TREAS.

**DIRECTORS**

W. I. PRINCE	S. H. JONES
B. W. HOW	L. C. HARRIS
HENRY NOLTE	J. A. FERGUSON
E. N. WHYTE	W. H. HOYT
G. A. EVEREST	D. O. ANDERSON

Duluth, April 4, 1910.

Mr. A. W. Latham,  
 Sect'y Minn. State Hort. Society  
 207 Kasota Blk,  
 Minneapolis, Minn.

My dear Mr. Latham:--

Prof. Green tells me the Executive Committee of the Horticultural Society have granted us an experiment station here in St. Louis County, and instructed me to write to you for the details and instructions in regard to work we might undertake to do.

The proposed Market Gardeners' Association which intends clearing up a large tract of land near Duluth, will furnish all the land that will be necessary for this purpose. Will you kindly inform me about how much land we should devote to this work, what kind of fruit trees, shrubs and small fruits we should plant and full instructions in regard to what we should do to carry out our part of making such station useful and helpful to the fruit growers of this part of the state. The management of such station will be placed in my care and I will be in position to carry out the wishes of the association along the lines you may suggest. Kindly let me hear from you at an early date so that I may if necessary, talk the matter over with Prof. Green when he visits us next Friday to lecture on our agricultural course at the Y.M.C.A. Also expect to have a meeting of the Northeastern Minn. Horticultural Society on the afternoon of April 8th in the rooms of the Commercial Club. Expect to secure some new members at this time and expect our association will be more active in the future.

IN SENDING IN NAME OF NEW MEMBER, IF CONVENIENT PLEASE FILL OUT AND USE THE FOLLOWING FORM

Ellsworth Wis. March 17 1910

A. W. LATHAM, Sec'y Minnesota State Horticultural Society,

Dear Sir:

Please enter the name of

C. L. Muggah

Post-office,

Ellsworth Wis.

, as a member of the society, for which I enclose \$1.00, the annual fee. Beside the Report and Magazine, you may send him plant premiums Nos.

H & 9

For my premium in securing this new member please send me the following book:

Vegetable Gardening (paper)

Signed

E. R. Holliday

Post-office

Ellsworth Wis

SEND TO THE SECRETARY FOR MORE OF THESE FORMS AS NEEDED.

## Will Not You Send

in one or more new members in 1910 and help bring the number up to 4,000 this year?

## New Members Will Receive

1. "Trees, Fruits and Flowers of Minnesota," cloth bound, 537 pages.
2. "Minnesota Horticulturist," 12 issues, 40 pages each.
3. Two Valuable Plant Premiums, their selection.

## You Will Receive

Valuable Horticultural Books for your library (see list of Premium Books in society folder) and an increased interest in the society from helping to enlarge its field of usefulness.

## The Society Folder

containing the "Fruit List", etc., you will find very helpful in securing new members. Any quantity of these can be had without expense by application to the Secretary.

## Please Do Not Forget

that in accepting the volume, "Trees, Fruit and Flowers of Minnesota" for 1909, it is **with the understanding** that you are to distribute the "Minnesota Horticulturists" received the previous year. You have no need to retain them, as they will be found bound in with the volume referred to above.

The distribution is a **very important part** of the work each member can do in teaching "right horticulture" and incidentally increasing the strength of the society.

## Lend a Hand!

A. C. JONES, OWNER.

C. E. NELSON, SUPT

NEMADJI STOCK FARM  
HOLYOKE, CARLTON CO., MINN.

Duluth, Minn., March 23, 1910

A. W. Latham, Secretary,  
Minnesota State Horticultural Society,  
Minneapolis, Minn

✓ 150

Dear Sir:--

Enclosed please find express money order for Fifty Cents, covering membership from our society to yours, of W. C. Mitchell, Hunters Park, Duluth, and Mrs. Rebecca P. Boynton, Lakeside, Duluth.

Will you be kind enough to forward, at the proper time, such reading matter that goes with the membership?

Yours truly,

2

A. C. Jones  
Secretary.  
N.E. Minnesota Horticultural Society.

Mar 18-10

Friend Latham

I was up north when your letter came, then I wrote a few of the old exhibitors to see what changes they thought was ought to have. I've thought the 10<sup>cents</sup> for 1<sup>st</sup> and 5-40 for 2<sup>nd</sup> should be put back on Col, as it gives the exhibitor something to work for.

Should like to have the limit in Col put to 60<sup>possibly</sup> and not less than 40<sup>50</sup> as it does not let us show all the fruit we bring. It is probably to late to get any more money for the fruit department if you have not already got it but the old exhibitors think they are not getting a fair deal

in having to put up so much fruit and then not getting money enough to pay for gathering it, out of the money now offered for premiums. I don't think

I had better say any more about it now but you know how I feel about it.

Brown out cutting scions for grafting today the frost is all out in the orchard. The water all went into the ground instead of running off. I think the birds will blow early this year, and it looks as though we would have lots of apples.

With kind regards  
& remain yours Respt

J A Howard  
Harriman  
Utah

# CRYSTAL SPRING FARM

Henry Husser, Proprietor

Grower of Fruits and Vegetables

Producer of Crystal Spring

Dairy Butter

✓ 200

MINNEISKA, MINN., March 14 1910

Mr A. W. Latham

Please send Minnesota Horticulturist  
to Mr F. E. Hartman, and Minneiska  
Mr Charles Weyl Minn

Instead a premium for me please send  
to Mr F. E. Hartman Greens Fruit Grower  
to the other not since I give him the one  
I had, which I need no more.

Yours truly

Henry Husser

Johannessohn & Co.

A. F. JOHANNESSOHN  
L. JOHANNESSOHN

HARDWARE  
HOUSEHOLD FURNISHINGS  
FARM IMPLEMENTS  
HARNES AND SADDLERY  
FARM SEEDS

Beltrami, Minn., March 16, 1910.

Mr. A. W. Latham, Secy  
Mpls, Minn.

Dear Sir: -

Enclosed m. o. for \$1<sup>00</sup>  
membership fees for 1910. for  
Mr. A. Corwin, Beltrami, Minn.  
and 50 apple seeds for the Prize  
contest, also for Mr. Corwin.

I wish you would send him  
also Green's Amateur Fruit Growing  
to which I would be entitled.

also send him the following  
Plant Premiums:

- (#1) 1 Beta Grape.  
(#8) 3 Pyrethrum uliginosum

If I am entitled to any Plant  
Premiums send me  
#5 and #8.

Yours truly  
A. Johannessohn

NORTH WESTERN FUEL CO.  
OPERATING DEPARTMENT

✓  
#117 25

Duluth, Minn., March 15, 1910.

A. W. Latham, Secretary,  
Minnesota State Horticultural Society,  
Minneapolis, Minn.

Dear Sir:--

Enclosed please find express money order for \$2.25 covering the dues in your Association for this year, for the following members of our Association who are residents of

Duluth:



✓ J. B. McCleran,	Duluth.
✓ Bishop James McGolrick	Duluth
✓ A. B. Hostetter	Duluth
✓ A. C. Jones	Duluth
✓ Miss M. J. Austin, Sellwood Bldg	Duluth
✓ Frank H. Cutting, City Hall	Duluth
✓ Camille Poirier, 2128 E. 2nd.	Duluth
✓ Wm. H. E. Jaap, Lester Park Green House	Duluth
✓ T. B. Hawkes, 4203 Lombard St	Duluth

The first four can be reached by simply addressing to Duluth, and were members of your Association last year, but the last five were not and would be pleased if you would send them the Horticulturalist from the beginning of this year.

Yours truly,

*A. C. Jones*  
Northwestern Minn Hort Socy

IN SENDING IN NAME OF NEW MEMBER, IF CONVENIENT PLEASE FILL OUT AND USE THE FOLLOWING FORM

*Barrett March 8* ✓ *1910*

A. W. LATHAM, Sec'y Minnesota State Horticultural Society,

Dear Sir:

Please enter the name of *William Hubred*  
Post-office, *Barrett R. No. 2 Minn.*, as a member of the  
society, for which I enclose \$1.00, the annual fee. Beside the Report and  
Magazine, you may send him plant premiums Nos. *4 and 8*

For my premium in securing this new member please send me the following  
book: *Evergreens and How to Grow Them*

Signed *Andrew Isakson*

Post-office *Barrett*

SEND TO THE SECRETARY FOR MORE OF THESE FORMS AS NEEDED.

*(over)*

## Will Not You Send

in one or more new members in 1910 and help bring the number up to 4,000 this year?

## New Members Will Receive

1. "Trees, Fruits and Flowers of Minnesota," cloth bound, 537 pages.
2. "Minnesota Horticulturist," 12 issues, 40 pages each.
3. Two Valuable Plant Premiums, their selection.

## You Will Receive

Valuable Horticultural Books for your library (see list of Premium Books in society folder) and an increased interest in the society from helping to enlarge its field of usefulness.

## The Society Folder

containing the "Fruit List", etc., you will find very helpful in securing new members. Any quantity of these can be had without expense by application to the Secretary.

## Please Do Not Forget

that in accepting the volume, "Trees, Fruit and Flowers of Minnesota" for 1909, it is **with the understanding** that you are to distribute the "Minnesota Horticulturists" received the previous year. You have no need to retain them, as they will be found bound in with the volume referred to above.

The distribution is a **very important part** of the work each member can do in teaching "right horticulture" and incidentally increasing the strength of the society.

## Lend a Hand!

*Please send him as premium Vegetable Gardening  
if he is entitled to it*

NORTH WESTERN FUEL CO.  
OPERATING DEPARTMENT

Duluth, Minn., March 11, 1910.

A. W. Latham, Secretary,  
Minnesota State Horticultural Society,  
207 Kasota Building,  
Minneapolis, Minn.

Dear Sir:--

I have your favor of the 10th and last year I became a member of the Minnesota State Horticultural Society through our local society here. We had a meeting of our local society some months ago and we continue it, but just how many members will remain with us is an uncertainty.

Our Secretary has been away but I think he has returned and I will get in touch with him and find out just how many we can count upon and send you the money covering the tax to the State Society.

Yours truly,



Treasurer  
N.E. Minnesota Horticultural Society

The Park Hotel,

STEPHEN TURNER, PROP.

GENERALLY LOCATED.  
RATES \$2.00 PER DAY.

✓ 11

Wells, Minn. Mar 8-5 P.M. 1910

- ✓ 1. John A. Hawkinson, Red Wing. R. 6.
- ✓ 2. D. P. Olin. " " "
- ✓ 3. J. S. Gaesman. " " R 1
- ✓ 4. J. Oakey. " " "
- ✓ 5. Mr Bryan. " " R. 2.
- ✓ 6. C. L. Opsal. " " "
- ✓ 7. Karl. Sanberg. " " "
- ✓ 8. Richard Weher. Godhue. R. 6.
- ✓ 9. Mr Ira Hall. Red Wing. R. 2.
- ✓ 10. Joseph Ring. Dennigan R. 2.
- ✓ 11. Andrew. Lindgren. Redwing.

(11)

Dear Mr. Latham, I send you the above 11 names, and check for \$11.00. I need more material have name here at wells than far. I will try to keep you posted of what I have. So you can use your own judgment where to send more. I'd rather be a little overloaded than be without

Sincerely Yours, R. A. Schutz

P. S. Nothing doing today. School  
children attended last meeting.  
not 1/2nd of farmers, all must  
attend Election.  
wished I could stay at  
home, and vote. R. S.

## Glover Crest Stock and Dairy Farm

FOREST HENRY &amp; SONS, Proprietors

Dover, Minn., March 7 1918

Friend Latham

I took eleven memberships yesterday at Red Wing. I will turn the names + money over to Schutz who will report them. There seemed to be one Fruit grower spot in the 10 sets you sent to Red Wing. Please mail a Vegetable Gardening to Andrew Lindgren to take its place as he would prefer it. Also please send <sup>board</sup> black report + Fruit Grower to Joseph Ring, Dennison Minn as I was short. I only put these names on as new members yet as I will turn over the whole list (11) to Schutz (this precaution I know is unnecessary; but did not want the names repeated on your list) I got 10 names for him as Dodge Center which he will turn in.

Yours as ever  
Forest Henry

N. J. Johnson, Prop.  
K. Johnson, Sec'y

Telephone: Dassel & Collinwood 98-3  
Twin City Connection

**D**ASSEL is a progressive little village of 600 population, located 60 miles west of the Twin Cities, on the Great Northern Railway. The country is beautiful, the soil good, the people intelligent, industrious and sociable and the community possesses the best of opportunities, commercial and otherwise. The locality is famous as a seed corn and butter center, and for its many beautiful lakes, hunting and fishing.

## Christine Lund Farm

Dassel, Minnesota



Dairying and Specialized Farming. Located on the north shore of Spring Lake, one mile north-east of Dassel

March 5th 1900

Mr. A.W.Latham,  
Minneapolis,  
Minn.

50  
sent  
3.7.10

Dear Sir,

According to your favor of the 3rd I am sending you herewith 50 cents to make exchange of a paper bound copy of Vegetable Gardening received as a premium, for a Cloth bound copy. The book is sent you under another cover.

Yours truly,

K. Johnson.



# HENNEPIN COUNTY NURSERY

WILSON S. HIGBIE, Proprietor

We Grow TREES, SHRUBS and  
PLANTS adapted to the Northwest.

Eden Prairie, Minn. *Feb. 28th 1910*

Friend Latham,

A few more memberships

for you:

- ✓ Geo. Ellis, Brown's Valley R. 2<sup>nd</sup>
- ✓ B. O. Sanby " " "
- ✓ Rudolph Felling " " "
- ✓ Mrs. M. E. Hale " " "
- ✓ H. A. Kirby " " "

at Graceville we had an irish  
catholic crowd to talk to and  
we all pronounced them a hard  
proposition, just like facing a  
lot of wooden men. consequently no  
memberships there. Find check for  
Five dollars (~~10.00~~)

Cordially

W. S. Higbie

# POST CARD

Place  
One Cent  
Stamp  
Here

A. W. LATHAM, Sec'y,

Minnesota State Horticultural Society,

207 KASOTA BLK.,

MINNEAPOLIS, MINN.

## Read Carefully

DEAR FELLOW MEMBER: As there is a larger demand for the reports of the Minnesota State Horticultural Society than we can supply—and as some do not care specially for the report—we are sending it out only on special request and upon assurance of compliance with the regulation which requires that the "magazines received during the previous year have been distributed amongst those interested in horticulture." And please note in this connection that a little personal effort accompanying this distribution may secure a new member for the society, entitling you also to some of the valuable premium books offered. See list of premium books in accompanying folders, which you will find useful in other ways in getting this new member.

Under these circumstances should you wish a copy of the report, will you please furnish on this card the information asked for below.

Your name .....

Address .....

What is the number of your membership ticket? .....

Have you distributed the 1909 Magazines? .....

Have you endeavored to secure a new member in this way and with what result? .....

Date.....1910.

*M.A. Lundstrom*  
*W. J. Anderson*  
*1670*  
*1710*  
*Face 50*  
*A. W. Latham, Secy.*

Minnesota State Horticultural Society

Located one-quarter mile east of Minneapolis City Limits on Como Ave. S. E.,  
Take Como Interurban Car to Belt Line R. R., walk north on railroad  
one block, turn to right—two blocks to nursery.

P. O. BOX 495

# Rose Hill Nursery,

ESTABLISHED 1874

JOHN HAWKINS, Proprietor,  
(Successor to HAWKINS BROS.)

Fruit, Shade and Ornamental Trees, Shrubs, Vines, Roses, Etc.

T. S. Phone Park 6173

LARGEST NURSERY NEAR THE TWIN CITIES.

Minneapolis, Minn., Jan. 17th, 1910. 190

Mr. A. W. Latham,

207 Kasota Block, City.

Dear Sir:-

Your favor of the 12th inst., has been received. I would  
be glad to receive about 10,000 folders for distribution among customers  
I think it might be the means of securing at least a few more members.  
At the same time I think the fruit list would aid the salesman both in  
the selection of varieties and to secure orders. If you will let me  
know when the folders are ready for distribution, I will be glad to  
call at your office for them.

Yours truly,

John Hawkins

....Central Hotel....

C. O. DALE, Prop.



900

Browns Valley, Minn., Feb 25 1910

Friend Latham,

I obtained the following memberships at Beardley:

- ✓ Mrs. John Schwarte - Beardley
- ✓ Jerome Markam "
- ✓ Geo. B. Chesley "
- ✓ F. B. Sherman R. 2<sup>nd</sup> "
- ✓ Clarence S. Hudson "
- ✓ John S. Kirkey - Barry
- ✓ G. B. Wheeler Chilton
- ✓ H. C. Fish "

(9)

Enclosed find check for Eight dollars (\$8.00)

Very Truly  
H. S. Higbie

IN SENDING IN NAME OF NEW MEMBER, IF CONVENIENT PLEASE FILL OUT AND USE THE FOLLOWING FORM

Greenbush Feb. 10th

1910

A. W. LATHAM, Sec'y Minnesota State Horticultural Society,

Dear Sir:

Please enter the name of

G. F. Gislason

Post-office,

Greenbush Minn

, as a member of the society, for which I enclose \$1.00, the annual fee. Beside the Report and Magazine, you may send him plant premiums Nos. 3-4.

For my premium in securing this new member please send me the following book:

Cucumbers and How to Grow Them

Signed

H. J. Johnson 537

Box 142

Post-office

Greenbush Minn

SEND TO THE SECRETARY FOR MORE OF THESE FORMS AS NEEDED.

## Will Not You Send

in one or more new members in 1910 and help bring the number up to 4,000 this year?

## New Members Will Receive

1. "Trees, Fruits and Flowers of Minnesota," cloth bound, 537 pages.
2. "Minnesota Horticulturist," 12 issues, 40 pages each.
3. Two Valuable Plant Premiums, their selection.

## You Will Receive

Valuable Horticultural Books for your library (see list of Premium Books in society folder) and an increased interest in the society from helping to enlarge its field of usefulness.

## The Society Folder

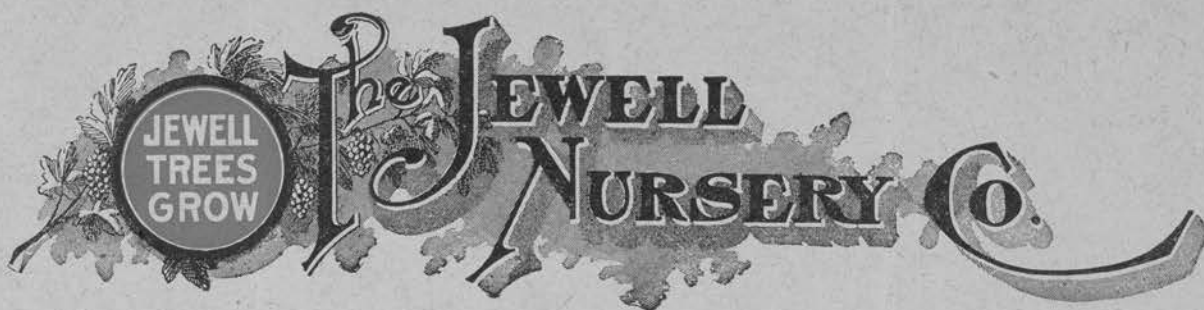
containing the "Fruit List", etc., you will find very helpful in securing new members. Any quantity of these can be had without expense by application to the Secretary.

## Please Do Not Forget

that in accepting the volume, "Trees, Fruit and Flowers of Minnesota" for 1909, it is **with the understanding** that you are to distribute the "Minnesota Horticulturists" received the previous year. You have no need to retain them, as they will be found bound in with the volume referred to above.

The distribution is a **very important part** of the work each member can do in teaching "right horticulture" and incidentally increasing the strength of the society.

## Lend a Hand!



ER

LAKE CITY, MINNESOTA

Feb. 10, 1910.

Mr. A. W. Latham, Secy.  
Minn. Hort. Society,  
207 Kasota Block,  
Minneapolis, Minn.

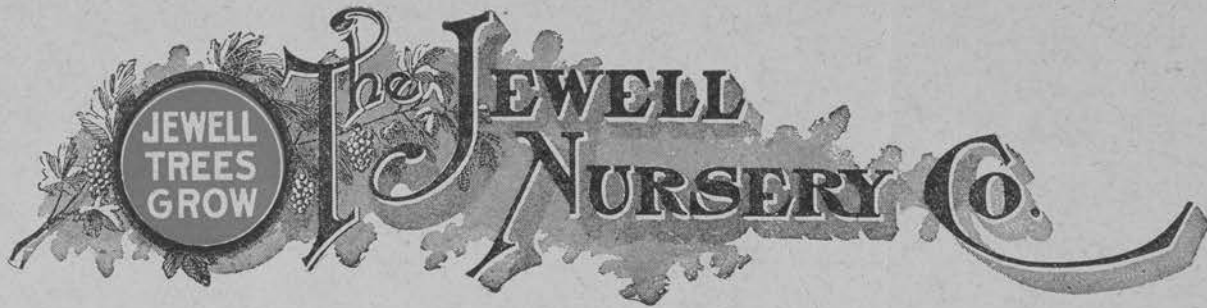
Dear Sir:-

Your favor of the 9th received. Under the circumstances, you will please omit that part of our advertisement that refers to the number of acres. Take out the words "1200 acres at Lake City, old and reliable". We do not see why it should cause you any embarrassment to print the statement as recently given you. We have not advertised ourselves as the largest nursery in America without due investigation, and we believe if you were to take the time to visit the other large nurseries, like Stark Bros., Storrs & Harrison, and the other large growers, you would find that we are correct in this statement.

We would explain further by saying that we know there are other nurseries who handle much more stock than we do. There are still other nurseries who make much more money out of the business than we do. There are still other nurseries who either directly or by contract grow more stock than we do. With the first two classes mentioned, our claim to being the largest nursery, etc., has no connection. Eliminating them therefore you would have to make a comparison with nurseries who actually grow their stock at their nursery, on their own ground, under their personal supervision, and not under the contract system.

For example: Stark Bros., with a million dollars capital probably handle in bulk more stock than any other nursery in America. Go down and visit their nursery at Louisiana. You will find there only a few hundred acres, probably not to exceed ~~more than~~ 500. You will find that they grow the bulk of their small fruits in New York, perhaps under contract, and a great many other items are grown for them at other places. A good share of it is shipped into Louisiana, and distributed from there. Stark Bros. are a good example of ~~the~~ other large nurseries in the country.

Our contention therefore is simply this: That we are devoting here at Lake City more acreage in one plant to the growing of nursery stock than any other concern on this continent. Now, we think we know to whom you refer in your reference to another nursery carrying advertising in the monthly. You permit them to make a statement which by very plain inference advertises them as much more extensive growers of nursery stock than any other nursery in the state, or in fact in the United States. We submit that if it is not proper



LAKE CITY, MINNESOTA

-2-

Mr. A. W. Latham:

for us, with <sup>out</sup> due proof, to assert our size, then it is equally improper for you to permit another nursery to advertise themselves as owning and operating a nursery of 1500 acres or more when bare investigation will demonstrate to anyone that the bulk of the land so advertised is in no way used for nursery purposes. In fact, they admit that much of it was bought for speculation.

Now, we are willing to agree that it may not and perhaps is not good taste and good judgement for any of us to brag about our size, and after all it is quality of goods that really counts, but at the same time we think if you are going to lay down some rules as to such claims, you ought to make them just and broad. In answer to your question as to our being the oldest nursery, Mr. Brand informed us that he started in business over there a few years before we did here, and therefore, in order to take an honest position we admitted his claim, and in our advertising we have withdrawn the statement that we made for a number of years that we were the oldest nursery in the Northwest.

Now, all this may appear to be a small matter to you and it is indeed a small matter to us, but we believe for the general interest of your horticultural family it would interest you to know our position in the matter.

Respectfully,

R. D. Underwood, Secy.

The Jewell Nursery Co.

President—A. W. KRUGER, Groton  
Vice-President—A. L. VAN OSDEL, Mission Hill

Treasurer—M. J. DeWOLF, Letcher  
Librarian—E. D. COWLES, Vermillion

For County Directors, Standing Committees and Secretary's Letter See Other Side

# South Dakota State Horticultural Society

Incorporated January 9, 1890

Secretary—N. E. HANSEN, Brookings

## MEMBERSHIP

Annual Membership, One Dollar, which includes a copy of the Annual Report.

Life Membership, Ten Dollars, which entitles the member to a set of back reports as far as available; payable in two installments if desired.

Remit Membership Fees to the Secretary.

Twenty-second Annual Meeting January 17, 18, 19, 1911—place to be selected by committee.

*A. W. Latham*  
*207 Kasota Bldg*  
*Minneapolis Minn.*

Dear friend:

This will show you  
our new letter head and I enclose  
also new fruit list.

Will send you articles <sup>soon as</sup>  
possible.

Cordially

*N. E. Hansen*

2/11/10

111

# County Directors for 1910

Aurora—T. N. Treat, Plankinton  
 Beadle—A. J. Glidden, Hitchcock  
 Bon Homme—O. A. Terpenning, Tyndall  
 Brookings—Robert Henry, Volga  
 Brown—Isaac Lincoln, Aberdeen  
 Brule—C. R. Tinan, Kimball  
 Buffalo—E. E. Dye, Gann Valley  
 Butte—J. H. Wilkinson, Belle Fourche  
 Campbell—M. T. Wolverson, Campbell  
 Charles Mix—Rev. John P. Williamson,  
 Greenwood  
 Clark—G. L. Carson, Bradley  
 Clay—Ole O. Jelley, Meckling  
 Codington—G. A. Tracy, Watertown  
 Corson—Geo. W. Comstock, McIntosh  
 Custer—C. T. LaClick, Buffalo Gap  
 Davison—E. C. Newbury, Mitchell  
 Day—Hans Callsen, Lily  
 Deuel—H. P. Torgerson, Astoria  
 Douglas—J. H. Berry, Armour

Edmunds—M. P. Beebe, Ipswich  
 Fall River—F. Noerenberg, Cascade Springs  
 Faulk—John Davies, Faulkton  
 Grant—S. S. Lockhart, Milbank  
 Gregory—Fred Reichman, Bonesteel  
 Hamlin—G. H. Caverill, Castlewood  
 Hand—Dr. S. R. Wallis, Miller  
 Hanson—C. M. Excell, Alexandria  
 Harding—O. O. Stokes, Harding  
 Hughes—A. Howes, Pierre  
 Hutchinson—C. L. Linington, Olivet  
 Hyde—H. H. Stoner, Highmore  
 Jerauld—C. M. Yegge, Alpena  
 Kingsbury—W. A. Palmer, Hetland  
 Lake—J. E. Cress, Ramona  
 Lawrence—V. S. Johnson, Spearfish  
 Lincoln—A. A. Freseman, Lennox  
 Lyman—W. S. McLain, Presho  
 McCook—August Reich, Bridgewater  
 McPherson—G. C. Knickerbocker, Eureka

Marshall—F. C. Lindgren, Langford  
 Meade—R. E. Huddleston, Elm Springs  
 Meyer—C. P. Jordan, Rosebud  
 Miner—Rev. T. F. Stecher, Howard  
 Minnehaha—N. H. Dybvig, Colton  
 Moody—Henry Hess, Flandreau  
 Pennington—P. C. Morlatt, Wasta  
 Perkins—J. Fred Lultmann, Lemmon  
 Potter—T. B. Kerner, Gettysburg  
 Roberts—W. H. Olson, Effington  
 Sanborn—Wm. E. Ryan, Letcher  
 Shannon—W. C. Smoot, Pine Ridge  
 Spink—Dr. J. K. Kutnewsky, Redfield  
 Stanley—Fred W. Warner, Philip  
 Sully—A. Youngburg, McCamley  
 Turner—W. E. Heeren, Chancellor  
 Union—H. J. Meidell, Beresford  
 Walworth—F. M. Thomas, Glenham  
 Yankton—Marcus Olson, Hanson

## Standing Committees for 1910

### Commercial Nursery Propagation

C. W. Gurney, Yankton N. H. Dybvig, Colton  
 Geo. H. Whiting, Yankton

### Experimental Horticulture

Hon. H. C. Warner, Forestburg  
 Prof. N. E. Hansen, Brookings

### Commercial Orchardng

Southern District - G. L. Carpenter, Vermillion  
 Central District - W. S. Kinkade, Sioux Falls  
 Northern District - F. M. Thomas, Glenham

### Commercial Small Fruits in the Black Hills

Ole Christenson, Spearfish

### Commercial Orchardng in the Black Hills

Northern - - - R. H. Evans, Spearfish  
 Central - - - C. Thompson, Rapid City  
 Southern - - - John Robertson, Hot Springs

### Commercial Floriculture

R. Strohmeir, Aberdeen E. C. Newbury, Mitchell  
 Wm. Nicol, Watertown Otto Appletoft, Huron

### Commercial Seed Growing

D. B. Gurney, Yankton

### The Farmer's Orchard

M. Yegge, Alpena C. L. Mott, Plankinton

### Propagation of Small Fruits

George W. Gurney, Yankton

### The Old vs. New in Education

Prof. A. A. Brigham, Principal School of Agriculture  
 Brookings

### Plant Diseases

Prof. E. W. Olive, Brookings

### Injurious Insects

Prof. H. C. Severin, State Entomologist, Brookings

### Industrial Education

President R. L. Slagle, State College, Brookings

### Relation of the State Fair to the State Horticultural Society

J. W. Campbell, Huron

### Civic Improvement

Prof. Geo. A. Clark, Yankton

### Horticulture at the Farmers' Institutes

A. E. Chamberlain, Supt. Institutes, Brookings

### Evergreens for Shelter and Ornament

H. N. Dybvig, Colton

### Windbreaks for Live Stock

Prof. James W. Wilson, Director Experiment  
 Station, Brookings

### The Forests of the Black Hills

Seth Bullock, Deadwood

### Dairying on a Fruit Farm

Prof. C. Larsen, Brookings

### Ornamental Lawn Planting

C. O. Bailey, Sioux Falls

### The Flower Garden

F. C. Stoltenberg, Brookings

### Market Gardening

A. J. Glidden, Hitchcock O. P. Huetsen, Vermillion

### Tree Planting

James B. Knox, Alpena F. E. Harrington, Mellette  
 T. J. Douthit, Volin I. I. Eitrem, Colton

### Soil Fertility

Prof. C. Willis, Brookings

### Dry Land Horticulture

Hugh Jeffries, Fort Pierre

## SECRETARY'S LETTER FOR 1910

*You are cordially invited to join the South Dakota State Horticultural Society. Our mission, entrusted to us by the State, is to gather and disseminate the best knowledge and experience concerning Fruits, Trees, Shrubs and Flowers. The expert experience of prairie planters should be widely known. Every school house library should have several copies of the annual report. Everyone interested in gardening should have a set of the reports.*

*Become a Life Member by paying Ten Dollars and get all back reports as far as available. These annual volumes constitute an exceedingly valuable library on prairie horticulture; they will soon be out of print and cannot be had at any price. No reduced price for back reports. All One Dollar each. A good way to get a set, as far as available, is to pay the first installment of a life membership. Each annual membership entitles the member to one copy of the annual report and to other literature sent during the year, especially helpful little letters and Bulletins from the Secretary's Office. New members receive at once the current volume in print at the time when the membership is received. Receipt for the membership will be sent direct to each member. In addition the name will be published in the list of members in the next annual report.*

*1904, Volume I contains 126 pages. 1905, Volume II contains 226 pages. 1906, Volume III contains 274 pages. 1907, Volume IV contains 278 pages. 1908, Volume V contains 307 pages. 1909, Volume VI contains 272 pages. All these reports One Dollar each.*

*As a matter of State pride we would like to have ONE THOUSAND new members this year. WILL YOU NOT BE ONE OF THEM?*

*Yours truly,*

*N. E. HANSEN, Secretary*

IN SENDING IN NAME OF NEW MEMBER, IF CONVENIENT PLEASE FILL OUT AND USE THE FOLLOWING FORM

Zumbrota Minn 2/7 1910

A. W. LATHAM, Sec'y Minnesota State Horticultural Society,

Dear Sir:

Please enter the name of Fritz E. Perret  
Post-office, Zumbrota Minn., as a member of the  
society, for which I enclose \$1.00, the annual fee. Beside the Report and  
Magazine, you may send him plant premiums Nos. 1, - 8.

For my premium in securing this new member please send ~~him~~ the following  
book: Greer's Amateur Fruit Growing

Signed

J. M. Holtan

Post-office

Zumbrota R. R. 6

SEND TO THE SECRETARY FOR MORE OF THESE FORMS AS NEEDED.

## Will Not You Send

in one or more new members in 1910 and help bring the number up to 4,000 this year?

## New Members Will Receive

1. "Trees, Fruits and Flowers of Minnesota," cloth bound, 537 pages.
2. "Minnesota Horticulturist," 12 issues, 40 pages each.
3. Two Valuable Plant Premiums, their selection.

## You Will Receive

Valuable Horticultural Books for your library (see list of Premium Books in society folder) and an increased interest in the society from helping to enlarge its field of usefulness.

## The Society Folder

containing the "Fruit List", etc., you will find very helpful in securing new members. Any quantity of these can be had without expense by application to the Secretary.

## Please Do Not Forget

that in accepting the volume, "Trees, Fruit and Flowers of Minnesota" for 1909, it is **with the understanding** that you are to distribute the "Minnesota Horticulturists" received the previous year. You have no need to retain them, as they will be found bound in with the volume referred to above.

The distribution is a **very important part** of the work each member can do in teaching "right horticulture" and incidentally increasing the strength of the society.

## Lend a Hand!



ER

LAKE CITY, MINNESOTA

Feb. 8, 1910.

A. W. Latham,  
207 Kasota Bldg.,  
Minneapolis, Minn.

Dear Sir:-

Please change our ad to read as per enclosed copy, beginning with next number of Horticulturist. Take out "1200 acres at Lake City, Old and Reliable", and substitute "Largest Nursery in America".

Respectfully,

The Jewell Nursery Co.

R. D. Underwood, Secy.

Dictated, but not read  
by Mr. Underwood

ROSE HILL NURSERY, - Minneapolis, Minn.

## THE JEWELL NURSERIES

A COMPLETE HORTICULTURAL ESTABLISHMENT

Founded in 1868 by Dr. P. A. Jewell.

~~1,200 ACRES AT LAKE CITY,  
OLD AND RELIABLE.~~

Tree and Small Fruits, Hardy Ornamental Trees,  
Deciduous Shrubs, Herbaceous Flowering and  
Foliage Plants, Roses of all kinds, House Plants,  
Bedding Plants, etc. Address

**THE JEWELL NURSERIES**  
LAKE CITY, MINNESOTA.

*Largest Nursery  
in America.*

WE OWN

OPERATE

devoted to growing  
and Shade Trees,  
bred Northern  
Farm and Garden  
and soil conditions.  
Fresh Cut Flowers,  
feet of glass developed  
satisfied if you desire  
Nursery catalogs.

CLINTON FARM

OWATON



A Book-  
culturist.

MINN.

## THE BYRON NURSERY.

We grow the varieties of nursery stock  
which are adapted to the Northwest.

OUR SPECIALTIES:

**Evergreens for Windbreaks.  
Strawberry and Raspberry Plants.**

Buy from us and save agent's commission  
Send for free catalog.

F. E. CUTTING, PROP.

BYRON,

MINN.

Steam Heat  
Electric Lights  
Excellent Bath  
First-class  
Sample Rooms

THE  
Hotel Lenhardt

B. C. LEARN, Prop.



TERMS

Two Dollars  
per Day

LITCHFIELD, MINN., 2-5-1910

Friend Latham:-

I in close check for \$31.  
and thirty one Hor. Members  
I have taken. Wm Shutz will meet  
us on Mon. Had better send  
~~another~~ bundle of Matter to Tracy  
if you have not already as we  
have only 5 sets of premiums  
left.

With kind regards I am  
as ever your friend

Frost Henry

Steam Heat  
Electric Lights  
Excellent Bath  
First-class  
Sample Rooms

THE  
Hotel Lenhardt

B. C. LEARN, Prop.



TERMS  
—  
Two Dollars  
per Day

LITCHFIELD, MINN., \_\_\_\_\_ 19

✓ F. C. Garbisch Waltham

✓ Henry Lierler Wykoff

✓ W. D. Ogg Wykoff

✓ Alfred H. Nelson  
Litchfield #8 Box 18a.



Steam Heat  
Electric Lights  
Excellent Bath  
First-class  
Sample Rooms

THE  
Hotel Lenhardt

B. C. LEARN, Prop.



TERMS  
—  
Two Dollars  
per Day

LITCHFIELD, MINN., \_\_\_\_\_ 19

- ✓ Mike McCoy Dexter
- ✓ Jas. Joyce Grand Meadow
- ✓ Fred. Studer Austin # 1.
- ✓ W. R. Hoppin Dexter
- ✓ W. Hagen Elkton
- ✓ O. C. Destad Hayfield
- ✓ J. B. Jefferson Waltham
- ✓ W. G. Nichols Waltham
- ✓ Chas. W. Colby Brownsdale

Steam Heat  
Electric Lights  
Excellent Bath  
First-class  
Sample Rooms

THE  
Hotel Lenhardt

B. C. LEARN, Prop.



TERMS  
—  
Two Dollars  
per Day

LITCHFIELD, MINN., \_\_\_\_\_ 19

- ✓ Philip Heydt Seargent  
✓ H. L. Mills Seargent  
✓ H. L. Giermer Waltham  
✓ John B Siegel <sup>Seargent</sup> ~~Waltham~~  
✓ W. D. Simons Litchfield  
✓ Martin Anderson Grove City #4  
✓ John M Nelson Litchfield  
✓ A. G. Beckstrand Brookfield  
✓ Oscar J Rhodes Lansing

Steam Heat  
Electric Lights  
Excellent Bath  
First-class  
Sample Rooms

THE  
Hotel Lenhardt

B. C. LEARN, Prop.



TERMS  
—  
Two Dollars  
per Day

LITCHFIELD, MINN., \_\_\_\_\_ 19

↓ Adolph Mahler  
↓ L. J. Borsler # 1  
↓ Geo. C. Behre # 3  
↓ L. J. Sheldon  
↓ Mrs Robt. M<sup>r</sup>. Douzall  
↓ A. P. Wilson Janesville  
↓ Alex Campbell Viola  
↓ J. A. Rice Exo Chatfield  
↓ W<sup>m</sup>. Wilsie Exota # 1

Waseca

**POSTAL CARD**

THE SPACE BELOW IS FOR THE ADDRESS ONLY.



*A. W. LATHAM,*

*Soc'y Minn. State Hort. Soc'y,*

*207 Kaestla Block,*

*Minneapolis, Minn*

Minnierka Feb 5 - 1910

Mr Latham

Dear Sir. Received your friendly request and I will get some photographs of our trees if you want this winter, however I think it would look best taken when the leaves come out. If you want them this winter please let me know at once.

Yours truly

Henry Hesser

W. H. HANCHETT, PRESIDENT.

J. W. LEVERICH, VICE-PRES'T

E. A. RICHARDSON, SEC. AND MGR.

**ORDERS**

by Telephone, Mail  
or Telegraph from  
Responsible Par-  
ties will Receive  
Prompt Attention.

# SPARTA FRUIT GROWERS' ASSOCIATION

GROWERS AND SHIPPERS OF SMALL FRUITS AND PRODUCE

BERRY BOXES IN THE FLAT, OR MADE UP

WHOLESALE AND RETAIL

127 EAST OAK STREET

REVISED AND MODERN  
ECONOMY CODES

**SPECIALTIES:**

Fine Strawberries  
Red Raspberries  
Black Raspberries  
Blackberries  
Blueberries, etc.

SPARTA, WISCONSIN, Feb 4th, 1910

Mr. A. W. Latham,

Minneapolis, Minn.

Dear Sir;-

Replying to yours of the 2nd will say that I inclose a cut taken from a photo of our fruit fields and farm. The berries in the foreground are blackberries and between the blackberries and the orchard is a red raspberry field. This is the only picture I have of any of our berry fields.

The clipping is from the report of the Wis. Experimental Association and I think you can borrow the cut for use in the March number of Prof. P. A. Moore, who is secretary of the organization. His address is Madison, Wis. If you prefer however I can send you the original photo, and you can have your own cut made.

Yours truly

W. H. Hanchett

# POSTAL CARD

THE SPACE BELOW IS FOR THE ADDRESS ONLY.



*A. W. LATHAM,  
Sec'y Minn. State Hort. Soc'y,  
207 Kasota Block,  
Minneapolis, Minn*

Friend Latham

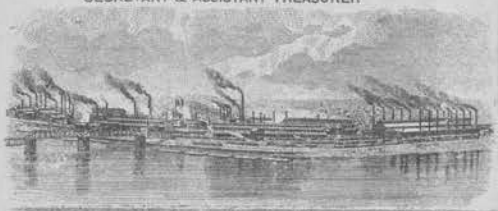
Mr. Schutz left with me  
about 25 sets of premiums  
I will notify you when  
& where to ship  
Yours Henry

OFFICERS

W. I. PRINCE, PRESIDENT.  
B. W. HOW, VICE PRESIDENT.  
HENRY NOLTE, 2ND VICE PRESIDENT.  
G. A. EVEREST, TREAS.  
HUBERT V. EVA,  
SECRETARY & ASSISTANT TREASURER

DIRECTORS

W. I. PRINCE            S. H. JONES  
B. W. HOW             L. C. HARRIS  
HENRY NOLTE          J. A. FERGUSON  
E. N. WHYTE           W. H. HOYT  
G. A. EVEREST         D. O. ANDERSON

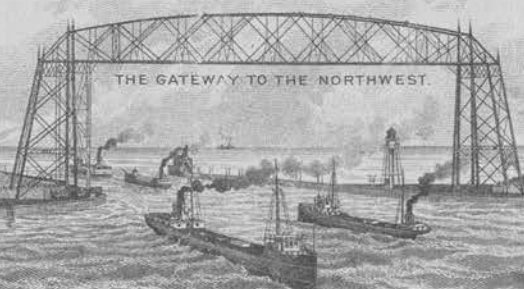


PROPOSED \$10,000,000 PLANT OF U.S. STEEL CORPORATION  
SHIPPING  
1880 1,000,000 TONS.      1900 12,000,000 TONS  
1890 3,000,000 TONS.     1908 23,797,162 TONS

# THE COMMERCIAL CLUB OF DULUTH



ST. LOUIS RIVER TO GIVE 200,000 HORSE POWER FROM  
ITS 374 AND 740 FEET ELEVATIONS NEAR DULUTH  
NOW OFFER CHEAP POWER TO MANUFACTURERS.



THE GATEWAY TO THE NORTHWEST.



Duluth, Jan. 27, 1910.

Mr. A. W. Latham,  
Sect'y State Horticultural Society  
207 Kasota Bldg.,  
Minneapolis, Minn.

Dear Sir:--

In reply to your favor of the 26th asking for a list of members of our Horticultural Society will say, Mr. S. Geo. Stevens is now Secretary of our organization and he is at present in the State of New York. He expects to attend the New York State Horticultural Society meeting before his return.

We have been adding several new members to our list and I cannot get it until Mr. Stevens' return. Will call his attention to the matter and will forward names as soon as possible.

Very truly yours,

*A. B. Austetter*  
Supt. Agr. Dept.

UNIVERSITY OF MINNESOTA

CYRUS NORTHROP, LL.D., PRESIDENT

DEPARTMENT OF AGRICULTURE

EXPERIMENT STATION

E. W. RANDALL, DEAN AND DIRECTOR

DIVISION OF HORTICULTURE

AND  
FORESTRY

SAMUEL B. GREEN, PROFESSOR  
CHAIRMAN OF COMMITTEE  
ON COLLEGE COURSE

LE ROY CADY, ASSISTANT HORTICULTURIST  
E. G. CHEYNEY, ASSISTANT PROFESSOR  
OF FORESTRY

S. B. DETWILER, ASSISTANT PROFESSOR  
OF FORESTRY

A. R. KOHLER, ASSISTANT HORTICULTURIST  
CHARLES HARALSON, SUPT. OF FRUIT FARM

ST. ANTHONY PARK, ST. PAUL, MINN.,

Jan 24-00

Mr A W Latham  
Mpls Minn

Dear Friend Latham

Your postal of 22 inst received  
The ~~wild~~ white grape you  
mentioned I am going to try to get  
some cuttings from. it is very  
valuable for our plant breeding.  
Another thing I would like to get  
a stock of, and that is our native  
wild hazel nut I would like  
to get the best obtainable in the  
state. probably you know where  
some good varieties could be  
obtained Thanking you for your  
favor  
Yours Truly  
Chas Haralson

Hendrum, Minn., Feb 1<sup>st</sup> 1910.

A. W. Latham.

Minneapolis, Minn.

Dear Friend:

I have for some time thought of writing you, but as I have felt have done <sup>a</sup> crime, and when one has done that, he is not likely to confess that so soon. You did me an ~~and~~ great honor, in appointing me as Superintendent of this trial station at Hendrum. If remembered I stated something in reference to sell out here, and now the act has been done I must say I feel it hard to reverse the tie between the me and all the members of the Minnesota Horticultural Society. ~~As~~ all of you has grown more precious every year I have stayed with you. But I do not intend ever to say good bye to you. If I can do you a good thing I will do it.

2- I have attended two annual meetings of your Society, (if I shall so express it) and found them men of ability and kind as a child and everyone seems <sup>to try</sup> to be the first to give aid and advice. as best they know how. and I hope you will remember me too. as it has not been an easy task to brick up on an old place that I have tried with the outmost power in my mind to build up and adorn with fruit. Many things have worked against me in later years and I have tried to fight it bravely and when I look back it seems I have had the upper hand. and I must thank God that I been able to do so much, now as I have sold my farm here, and those that come after me I have not even seen myself. I have not received anything from the main station

3- for trial here yet. But I'm  
distant some thing will come, or  
from other sources. I have given  
me some thought who should be  
selected in my place and I will  
make it an suggestion that

Oct. The Solum of Halstad  
be selected he has a better  
soil than at my place and  
I have made reference to him  
for to take up the work. As he  
seem to be just modelled for  
fruit growing, and not that alone  
but also <sup>appoint</sup> Forestry. And I think  
if you get him and I don't doubt  
that that he accepts it. And you  
will not have lost so much.

I think have now remained with  
your society since 1891. as I find  
reports from that date. The distinction  
I could not tell you yet. but you  
will hear from me if nothing befalls  
me I have at this place several

4- That ought to have been watched  
and should have been reserved  
for trial. which otherwise may be  
destroyed by mice and Rabbits  
& use now soap suds spray  
for Rabbits and a very strong  
soap sud wash also for mice  
that is when snow drifts trees  
badly down in places. and  
done that way before snow comes  
rarely or I have never seen mice  
touch them, before I commenced  
to use that Rabbits & mice would  
work up through the snow and the  
Rabbits on top of the snow drifts  
I am likely to leave Red River Val  
by first part of March and if  
Magazine should come out late  
better reserve that til you hear  
from me most likely I go West.  
As I feel cold weather have a great  
affect on my health, and I have been  
sick although not much in bad

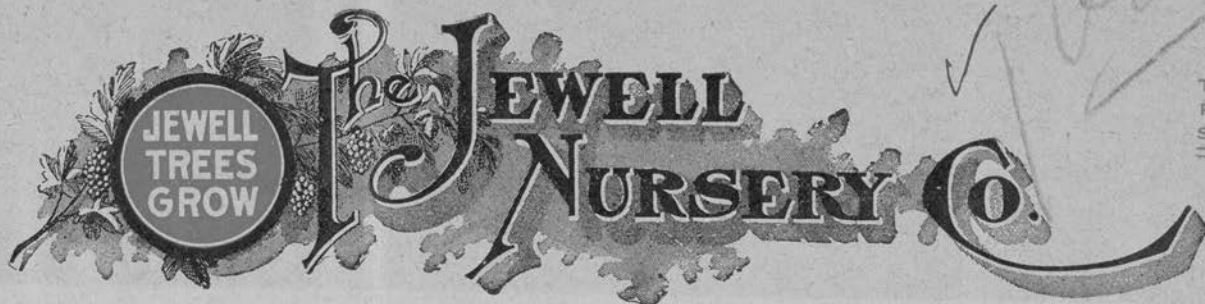
5- This winter but have been  
compelled to stay at home more  
this winter than ever before I  
did see a doctor while I was  
down at the Annual Meeting, but  
it seems have relieved me little  
so far. Before I went down never  
expected to be able to go down  
there however I felt very well  
while I stayed down there and  
slept well. I have this winter  
suffered with an awfull pain in left  
side of my head, and especially after  
being out in the cold all day. The  
Carr two weeks seem to have been  
beneficial to me as we have had  
a more tempered weather. I must  
before I conclude my letter, pardon me  
for that I was of so little service  
to the Society. At least, and must  
hope you will get better service from him  
whom I have suggested. So here receive my  
thanks and my best wishes and regards to you  
all over

I do not intend my letter  
for Publication but for you and  
those that appointed me as  
superintendent for these trial  
station at Henderson. sorry for  
its short duration, but I have  
gone tired ~~of~~ on the ground and  
worn out by much adversities  
and in the fight for an outlet  
of the water, and I had to many  
time to face the brunt of the  
fight, and this summer it fell  
through by force of the Law, but  
the friendly neighborhood was  
gone and I did know it would  
go. I feel I am released at least  
for a while and as my health  
is low I need a change, and I think  
can't leave fruit growing alone yet.  
I again say Thanks to you and family  
and all for the golden hours that have  
passed together fraternally yours  
Ole Flaggen

ESTABLISHED 1868

INCORPORATED 1884

TWELVE HUNDRED ACRES



TREES  
PLANTS  
SEEDS

W-Y

LAKE CITY, MINNESOTA

Jan 14th 1910.

A. W. Latham,  
Kasota Block,  
Minneapolis, Minn.

Dear Sir:-

Enclosed find check for \$1. membership fee to the  
Minnesota State Horticultural Society, for A. F. Peterman,  
Winona, Minn., Gilmore Ave., and F. X. Grubl, Bellefourche, S.D.

Yours truly,

The Jewell Nursey Co.,

(Enclosure)

# The Crookston Nurseries

ESTABLISHED 1878

F. T. HASELTINE,  
PROPRIETOR

Shade Trees and  
Small Fruit a Specialty.

Crookston, Minn.,

Jan 24<sup>th</sup> 1900

Mr. A. W. Latham,

Dear Sir,

Your very kind letter did  
a few days since.  
I would be pleased to  
take up the work you  
mention in your letter.  
If I was a little younger  
I am past 70 years, have  
been in the harness for  
30 years in this climate.  
I feel I must make  
a change for a warmer  
climate, as soon as I possibly  
can make a change in  
my business. Thanking you very  
much for past favors I remain  
most truly,  
F. T. Haseltine

# Commercial Hotel

DE WITT HOLBROOK, Proprietor.



RATES \$1.50 AND \$2.00 PER DAY

Brownsdale, Minn., Jan. 27 1900

Dear Mr. Latham:—

Please send Bundle  
of Hor. matter to Litchfield  
as we are there next week.  
Took 12 memberships to-  
day Will probably have  
plenty of books for to-morrow  
at 10¢ each.

With kind remembrances  
Trust Henry



N. W. Telephone Shakopee Exchange No. 15-1

15 MILES FROM MINNEAPOLIS

# HENNEPIN COUNTY NURSERY

WILSON S. HIGBIE, Proprietor

We Grow TREES, SHRUBS and  
PLANTS adapted to the Northwest.

Eden Prairie, Minn. Jan 13 1909

Friend Latham,

Yours at hand  
relative to the nurserymen using  
the folders more freely. I am  
willing and anxious to use the  
folders as suggested and will  
call at your office for a supply  
the first time I am in the  
city. I think, however, they would  
prove more effective if made  
more attractive either by increasing  
the size or by eliminating part  
of the matter and printing the  
remainder with larger type.

Sincerely Yours

W. S. Higbie



Red River Valley Horticultural Society



J. F. HETLER,  
President.

L. P. HARRINGTON,  
Secretary.

Crookston, Minn. Jan. 16 1900

A. W. Latham Sec.

Minneapolis

My Dear Sir:-

A group of our members did not receive the last "Horticulturist" among them were Edward Rud, Louis Rud & Julius Paulsrud all of Crookston. Will you look the list of members I sent you and see if their names are not on that list?

I sent you my copy of original list of members. If you have it, please return it to me.

Yours truly,  
L. P. Harrington.

List of members ret'd.

O. W. HUNT

INSURANCE  
AND  
REAL ESTATE

*W. H. Hunt*

Lewiston, Minn., Jan 6<sup>th</sup> 1910

A. M. Latham Sect.  
Minneapolis Minn.

Dear Sir, Enclosure M. A.

\$2.00 One dollar for new member V. H. Fritch  
Lewiston Minn. send him premiums \$3.44 ✓  
send me \$1.44, also vegetable gardening (clerk) ✓  
My membership ticket is \$1.79.

Yours, O. W. Hunt

sent  
1/13/10

Kensington Minn  
Jan 10. 1910

A W Latham Secretary  
Minneapolis  
Minn

Dear Sir,

I would like to get  
the back reports I have got  
the report of 1908 and you  
can send them by freight

Yours truly

Andrew A. Shachtel  
Kensington

R R no 2 box 55 Minn

Ad 1.12. ~~09~~  
110



We Grow TREES, SHRUBS and  
PLANTS adapted to the Northwest.

N. W. Telephone Shakopee Exchange No. 15-1

15 MILES FROM MINNEAPOLIS

# HENNEPIN COUNTY NURSERY

WILSON S. HIGBIE, Proprietor

Eden Prairie, Minn. Jan 3rd 1910

Mr. A. W. Latham

Super. Minn.

Dear Friend:- I will enclose check  
for \$3 = membership fees for the  
following persons:

Arach Swenson - Boyd, Minn.

E. Q. Skotterud - Dawson "

E. H. Kaufang - Clarkfield "

I obtained these members while  
helping conduct a farmer's institute  
at Dawson + Boyd the 20-21-+22 of  
last mo. hence they received the  
cloth-bound report also Prof. Green's book.

While at Dawson I was asked to  
help organize a local society. but as  
I understood that Prof. Green was to  
be there soon advised them to wait  
for him. He would know more about  
the necessary constitution and bylaws.

If I am called upon for more  
such work I will prepare for such  
an emergency. With best wishes for  
a Happy + Prosperous New Year I am

Cordially Yours  
W. S. Higbie

Jan 2-010  
Friend Latham

Please find merit enclosed  
as requested and will try and  
do what I can for you with  
apple seeds. The nice to this  
so when an apple begins to rot  
dont know how many I can get.

Good snow winter weather  
but not seriously cold have not  
cut any scions for grafting yet it  
has been so cold. Will close by  
wishing yourself and family a Happy  
new year also include Mr Elcott  
and all my Horticultural Friends  
Yours Resd -

J A Howard  
Hammond

OFFICE OF  
FRANK I. HARRIS  
SUNNY SIDE FRUIT FARM

LA CRESCENT, MINN. Dec.24th 1909.

Mr.A.W.Lathan

Minneapolis, Minn.

Dear Friend:

Replying to your letter, I had the misfortune to cut my leg with an ax shortly after my return from attendance at the meeting, and am just beginning to hobble around on crutches. I do not apprehend any permanent result worse than a stiff knee but it is not a pleasant experience. I will finish my report and send in in time for the Feb. magazine though I have little besides failure to report. I dont think have any unpublished photos that would be of interest.

If you can allow the enclosed bill for travelling expenses it would be acceptable just at this time. I did not not claim this last year and would not now under other circumstances. Wishing the compliments of the season.

*Yours truly*  
F. I. Harris

(Duchess tree)

Dec 23<sup>rd</sup> - 09

Friend Latham

will send you a small photo  
of Patton & also 2 large ones of  
Strutty and one Mc Mahon,

you had the two best Patton photos  
that I had in the Horticulturist  
one with the boy sitting on the basket  
and the one last year when I stood  
under the tree, did not have  
any taken this summer but will  
try and do so next season,

With kind regards and  
Wishing you a Merry Christmas  
and Happy New Year I remain  
yours truly  
J. C. Howard  
Hammond

Dawson, Minn.,

Nov-27-09

Mr. A. W. Latham

Dear Sir.

I received your letter of  
the 18 inst. Please send by  
return mail 25 <sup>new members</sup> forms  
as I think I can secure  
that many members and  
about 75 or 100 folders.  
Hoping to hear from you  
soon, I remain

Yours Truly.

Wm. B. Howland.

Bx 79.

12.24.09

Post Card

THIS SIDE FOR ADDRESS ONLY



A. W. Latham,

207 Kasota Bldg.,

Minneapolis, Minn.

Lake City, Minn.,

ER

Dec. 20, 1909.

A. W. Latham,  
Minneapolis, Minn.

Dear Sir:-

Please continue running  
our ad in the Horticulturist same  
as heretofore.

Respectfully,

R. D. Underwood, Secy.

*Established 1868*

The Jewell Nursery Co.

## OFFICERS

W. I. PRINCE, PRESIDENT.  
 B. W. HOW, VICE PRESIDENT.  
 HENRY NOLTE, 2ND VICE PRESIDENT.  
 G. A. EVEREST, TREAS.  
 HUBERT V. EVA,

SECRETARY &amp; ASSISTANT TREASURER

## OFFICE OF SECRETARY

## DIRECTORS

W. I. PRINCE	S. H. JONES
B. W. HOW	L. C. HARRIS
HENRY NOLTE	J. A. FERGUSON
E. N. WHYTE	W. H. HOYT
G. A. EVEREST	D. O. ANDERSON

# THE COMMERCIAL CLUB OF DULUTH

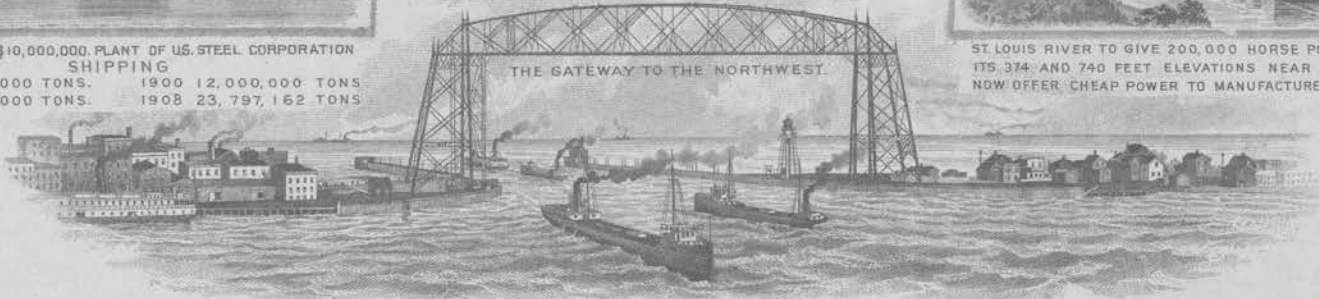


PROPOSED \$10,000,000. PLANT OF U.S. STEEL CORPORATION  
SHIPPING

1880 1,000,000 TONS.	1900 12,000,000 TONS.
1890 3,000,000 TONS.	1908 23,797,162 TONS



ST. LOUIS RIVER TO GIVE 200,000 HORSE POWER FROM  
ITS 374 AND 740 FEET ELEVATIONS NEAR DULUTH  
NOW OFFER CHEAP POWER TO MANUFACTURERS.



Duluth, Dec. 18, 1909.

Mr. A. W. Lathan,  
 207 Kasota Bldg.,  
 Minneapolis, Minn.

Dear Sir:--

In reply to your favor in regard to candidacy of J. M. Underwood for President of the State Agricultural Society will say, we feel very friendly to him in this respect and will use our influence to secure delegates who will support ~~the matter~~ <sup>him</sup> at the coming election.

I would like to send you one or two papers in regard to the horticultural interests of Northeastern Minnesota, to be submitted for publication in the Annual report. How soon would you want such papers? I have been away to the Corn Exposition at Omaha and will take these matters up at once.

Awaiting your reply as to how soon you must have the <sup>papers</sup> ~~booklets~~, I am,

Very truly yours,

*A. B. Westetter*  
 Supre Agr. Dept.

P.S. The stenographer did not make plain that the papers referred to are those discussed at our Horticultural Society meetings for your use if you desire them.

*A. B. Westetter*

575

University of Minnesota  
Crookston School of Agriculture

Crookston, Minnesota.

Dec. 7th 1909.

Mr. A.W. Latham, Sec.  
Minneapolis, Minn.

My dear Sir:-

*Security fine*

I am enclosing check for Five Dollars & ~~fifty cents~~  
(\$5.<sup>75</sup>) to pay dues of 23 members in the State Society. You write  
me that you can send me the reports before Christmas. Please send them  
as soon as you can by express to me here, and I will deliver to the  
members. The "Horticultural List" will be sent to the addresses given  
in list of members until further notice.

Yours very truly,

*L. P. Hamington*  
\_\_\_\_\_  
*Sec.*

Red River Valley Horticultural Society

J. F. HETLER,  
President.

L. P. HARRINGTON,  
Secretary.

125

Crookston, Minn. Dec 11. 1909

A W Latham,  
Minneapolis.

My Dear Sir,

Enclosed please find 25 cents  
to pay dues of Mr. Walter Latta,  
Crookston, Minn. And report same  
yourself.

L. P. Harrington,  
Sec.

Dec 1 - 89

Friend Lathrop

I have been up north for two weeks and will now try and answer your letter. My apples are not keeping very good but think that I can get a few and make some for the meeting.

I think that would be a good plan for then they would not bother the exhibitor so much for apples if they could buy them.

Have made my rubric and will send them along

yours Respt

J A Howard  
Hammont  
Min.



Red River Valley Horticultural Society



J. F. HETLER,  
President.

L. P. HARRINGTON,  
Secretary.

Crookston, Minn. Dec. 2 1909

A W Latham  
Minneapolis  
Dear Sir:-

In reply to your letter will say that it makes a difference in relation to sending out the reports as to when they are sent. If when school is in session here we could have them sent here for distribution. If the school closes they could better be sent to the home address. When will the report be ready for distribution?

We had Mr. Kotalson at our meeting and he gave us an exceedingly helpful talk.

Prof. Robertson was elected a delegate from our Society.

Yours truly  
L. P. Harrington

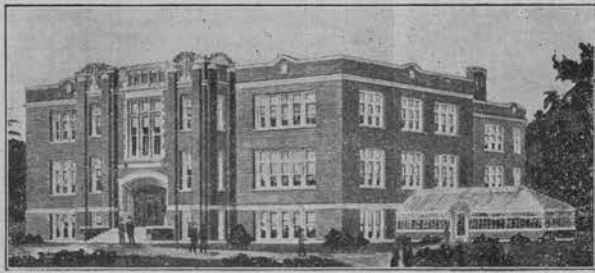
OFFICE OF  
FRANK I. HARRIS  
SUNNY SIDE FRUIT FARM

LA CRESCENT, MINN. Nov. 29<sup>th</sup>/<sub>11</sub> 1909.

Friend Latham:

S. J. Evans of this township has some good apples, and cannot attend Annual Meeting. He wants me to come and pick them out & exhibit for him on shares. Mine were so poor I did not save any for this occasion and would like to help make a showing from this section but cannot make entries in advance as do not know just what he has fit for show. There would be bushels of one or more varieties & single plates of a dozen or more others. Not hearing from you I may do this but if it will be too late to make the entries after arrival please let me know by return mail as it will save the expense of shipping. Of course I would enter them in his name.

Yours truly  
F. I. Harris



## La Crosse County School of Agriculture and Domestic Economy

### SCHOOL BOARD

J. L. Pettingill  
President  
F. I. Bolles  
Vice President  
B. F. Oltman  
Secretary

A. A. JOHNSON  
Principal

### SCHOOL FACULTY

A. A. Johnson  
Agriculture  
Lucile W. Reynolds  
Domestic Economy  
P. L. Johnsrud  
Agricultural Engineering

ONALASKA, WIS.

Mr. A. W. Latham

Dear Sir,

I have a job in the new Agricultural School located here. You will see by the picture above that it is a fine place. I have charge of the green house and shall probably have charge of the Horticultural work. Having ben in other work for a number of years I am a little behind in Horticulture, but it is in me. If you can send me any literature that will be helpful it will be very much appreciated. I should like to have the bound volume of The Horticulturist, when it is ready, and anything you think would be useful in experimental work. I am a son of J. S. Harris.

Yours truly

Onalaska Wis. E. E. Harris



Red River Valley Horticultural Society



J. F. HETLER,  
President.

L. P. HARRINGTON,  
Secretary.

Crookston, Minn. Nov. 26 1909

A. W. Lathum  
Minneapolis.

My Dear Sir,

I have collected dues from about forty five members. How much am I to remit to you for each member?

I am sending you by express prepaid a box containing samples of three varieties of Apples raised by Mr. O. J. Hogan at Steadman Minn. for exhibition at the State Horticultural Meeting.

We have a very successful and interesting meeting here on the 19<sup>th</sup>.

Yours truly,  
L. P. Harrington  
Secy.

Dear Sir.

I will try to come up to requirements of your program although it is a sacrifice of time well needed at home.

I have seen an announcement in program on first day, but thought the same lackness in prosecuting the program

THE SPACE BELOW MAY BE USED FOR ADDITIONAL CORRESPONDENCE



## POSTAL CARD

THE SPACE BELOW IS FOR THE ADDRESS ONLY.

Mr. W. A. Latham  
Karota Block  
Minneapolis  
Minn.

would prevail this year as the first time  
I was up ther 3 years ago, when my paper  
was called for 2 days latter than schedule time  
in program.

Since you see, I will be there in time  
it is not necessary for you to write any  
answer for this. I hope h.m. will be a success as your  
ambition, and great interest in it deserves.

Yours truly

Henry Husser

JAMES W. WILSON, M. S. A., Director  
Animal Husbandry

N. E. HANSEN, M. S., Vice-Director  
Horticulture and Forestry

JAMES H. SHEPARD, B. S.  
Chemistry

E. L. MOORE, B. S., D. V. S.  
Zoology and Veterinary  
Medicine

CLIFFORD WILLIS, M. S.  
Agronomy

South Dakota  
Agricultural Experiment  
... Station ...

ROBERT L. SLAGLE, A. M., Ph. D.  
President of College

EDGAR W. OLIVE, A. M., Ph. D.  
Botany

CHRISTIAN LARSEN, M. S. A.  
Dairy Husbandman

R. A. LARSON  
Secretary

BEN B. LAWSHE  
Stenographer

Brookings, South Dakota, November 23rd, 1909.

Mr. A. W. Latham,  
207 Kasota Bldg.,  
Minneapolis, Minn.

Dear Sir: *and friend:*

You are certainly allowing me more time than I expected as your programs is always crowded with interesting papers and discussions. I expect to be in Minneapolis not later than Sunday night. This will give me one day before the meeting. It will probably be better for me to prepare my Russian talk ready for the printer, as it will very likely vary somewhat from the oral address. Will see later about this. It would please me immensely to stay with you during the entire meeting so that I might meet the old veterans of Horticulture again. This year the conflict in dates of meetings appears to be unavoidable.

Yours truly,

*N. E. Hansen*

Silver Lake, Minn

Nov. 20 - 1899

A. W. Latham,

Sec'y Minn. S. H. Society.

Dear Sir

will you please  
inform me if there is a place  
or Nurseryman where a person  
could send for some grafts of  
such varieties as the Golden Russet  
Grime's Golden, Jonathan, Baldwin  
and some other tender sorts to

experiment with our hardy stock  
I have learned the art of grafting  
and am quite an enthusiast  
in it.

Hoping to hear from you at ~~the~~  
your earliest convenience

yours truly.

Adolph Heikel

**Crystal Spring Farm**

HENRY HUSSER  
Proprietor

Minneiska, Minn. .... 190

Mr A. W. Latham !

Dear Sir!

Please put on list of Society the  
following name

Mr. Jul. Zimmerman

Minneiska R. 1 Minn.

I will pay his Dollar with my fee on  
H. Meeting, but it would be well  
if you will send him the last Horticulturist  
if you please to do so, since I stek  
good for his Subscription.

Yours truly

Henry Husser

Please note! If my train is on time I will  
be there at 11 o'clock, but if such is not the  
case it would not be possible, now time limit  
is 11 o'clock in program for exhibit, please tell me on  
a card if in such case exhibit could not be on competition  
if not there strictly 11 o'clock.