



## Records of Leslie R. Beatty

### **Copyright Notice:**

This material may be protected by copyright law (U.S. Code, Title 17). Researchers are liable for any infringement. For more information, visit [www.mnhs.org/copyright](http://www.mnhs.org/copyright).

L.R.BEATTY'S COPY OF

Landscaping Projects Accomplished  
by the Civilian Conservation Corps  
on Minnesota State Forests.



Parking Area  
Orr Public Camp Ground  
S-52 *Cusson, Minn.*

Sept. 29, 1938



Orr Picnic Area  
Camp S-52 *Cusson, Minn.*

Sept. 29, 1938



Fire place at Beatrice Lake  
Camp ground. By Camp  
S-53, Side Lake, Minn.  
Sept. 29, 1938



Fire place at Wakemum  
Camp ground, Lake  
Superior Sec. 36-63-18  
By Camp S-52,  
Cusson, Minn.  
Sept. 29, 1938.



Bath House  
Roy Lake Beach, S-141

August 23, 1938



Interior Bath House  
Roy Lake Beach, S-141

August 23, 1938





Camp Ground Shelter

Roy Lake, S-141

August 23, 1938



Beach and Bath Houses

Roy Lake, S-141

August 23, 1938

Refectory Building  
 Woodenfrog Camp Ground  
 Camp S-52  
 July 1938



Roof Timbers  
 Refectory Building  
 Woodenfrog Camp Ground  
 Camp S-52  
 July 1938



Work Platform  
 Refectory Building  
 Woodenfrog Camp Ground  
 Camp S-52  
 July 1938



Bathhouses, Wakemup Bay Camp Site.  
Lake Vermilion, Dec. 36.-63-18.  
By.  
ccc Camp 5-52 Curzon, Minn.  
Sept. 29, 1938



Parking Area and  
Bath Houses  
Orr Public Camp Ground  
Camp S-52  
July 1938



Bath Houses  
Orr Public Camp Ground  
Camp S-52  
July 1938



Shoreline fill  
Orr Public Camp Ground  
Camp S-52  
July 1938





Sod Lawn  
Orr Camp Ground

Camp S-52

July 1938



Rock Retaining Wall  
Parking Area

Orr Public Camp Ground

Camp S-52

July 1938



Island Lake Public Camp  
Camp S-51





Sign  
Beatrice Lake  
Public Camp Ground  
Camp S-53







Sign  
Itasca Park



Typical Sign,  
USDA  
Scenic Park



Directional Sign  
U.S.F.S.





Sign  
E.C.W. Recreational Development



Sign -  
Itasca State Park



Road corner post signs  
Itasca Co. near Balsam Lake



U.S. Park Service Type



Camp S-52, Casson, Minn. Sept. 29. 1938  
Picnic ground Sign, Public Camp at Cam.



Log Shelter Public Camp Ground  
Wake'em-up Bay, ~~Kabetogama~~ Lake  
Camp S-52  
*Vermillion*



Typical Signs -  
U.S. Park Service.







BEATRICE LAKE

PUBLIC CAMP

Tables and

Fireplaces

CAMP S-53



Entrance & Parking  
Beatrice Lake  
Camp & Picnic Area  
Camp S-53



Picnic Area  
Beatrice Lake  
Camp S-53



Public Dock  
Beatrice Lake  
Camp S-53

(Pictures by  
Camp S-53)





Garbage Incinerator

Holt Lake Camp  
S-135

Log Type Foot Bridge<sup>20</sup>  
Temperance River Gorge<sup>21</sup>  
Camp S-63 Side camp of S-62.<sup>19</sup>

Log Type Foot Bridge  
Temperance River Gorge  
Camp S-63, Side Camp of S-62



Plank Rustic Type  
Foot Bridge Cp552  
Crane Lake Tower Road





Fireplace  
Island Lake  
Camp Ground  
Camp S-51



Fireplace  
Federal Camp  
Ely Buck Road





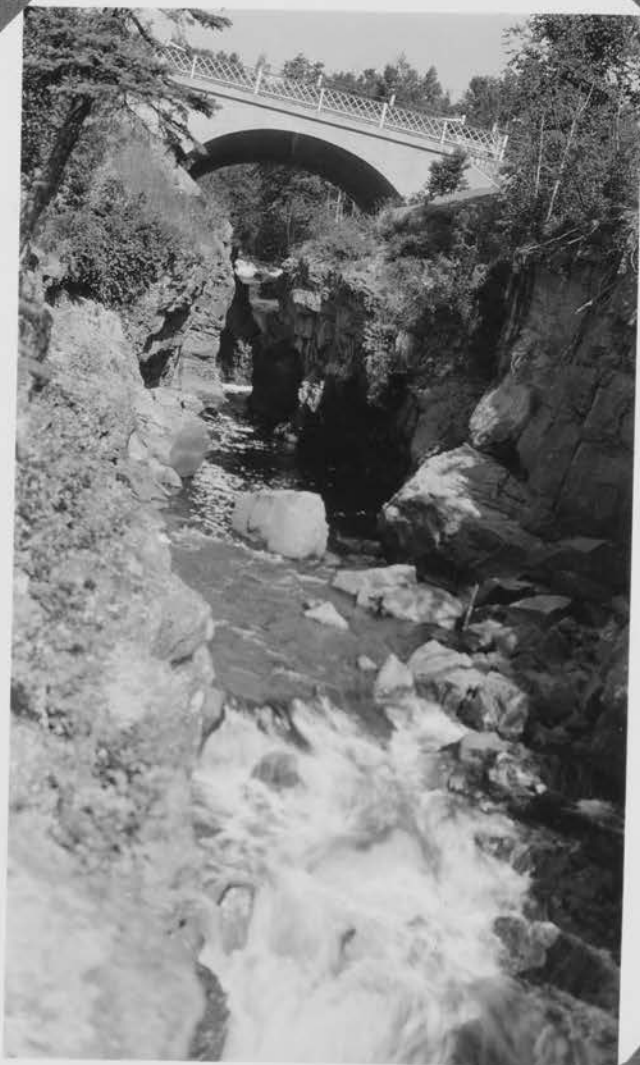
Solid End Picnic Table at  
Beatrice Lake Camp ground.  
By Camp S-53, 'Aide Lake, Minn.'  
Sept. 29, 1938.



Log Deck Table



Camp 583  
Bear Lake



Temperance River  
Gorge  
Camp S 63





Public Camp Ground Campers  
E.C.W. Recreational Developments







Wild deer on Echo Trail  
June 1936 -R.R.B.



13 lb Pickeral found on shore  
Antler Lake, Camp S-54





Interior Court

Camp S-141

August 23, 1938



Interior Landscape

Camp F-14 - Cut-Foot

August 22, 1938



Approach Landscaping

Camp F-12 - Pike Bay

August 24, 1938



Interior Landscaping

Camp F-12 - Pike Bay

August 24, 1938



Approach Landscape

Camp F-48 - Walker

August 24, 1938



Approach Landscape

Camp S-134 - Paul Bunyan

August 24, 1938



Camp S-53 *Side Rock*



Camp S-53 *Side Rock*