



Records of Leslie R. Beatty

Copyright Notice:

This material may be protected by copyright law (U.S. Code, Title 17). Researchers are liable for any infringement. For more information, visit www.mnhs.org/copyright.

L.R.BEATTY'S COPY OF

Water conservation dams built by
the Civilian Conservation Corps on
public lakes and streams in
Minnesota.

LIST OF DAMS

Balsam

Borden

Deer Creek

Egge & Leppenan

Emily

Fox

George

Hartley

Holt

Lower Rice

Pequaywan

Prairie

Roosevelt

Sturgeon

Tamarac

Washburn

Wolf



BALSAM LAKE DAM SITE
Camp S- 54





Balsam Lake Dam Construction
Camp S-54, Dec. 1936





Pile driver, Balsam Lake
Camp S-54



Balsam Lake
Dam site excavation
Camp S-54

Lake Borden Dam #5-069
Sec.11-44-28, Crow Wing County, Mille Lacs State Forest
Constructed by Camp S-135 and S-76, Nisswa

Enrolled Mandays - 1177: Estimated material costs \$746.00

Normal area of 973 acres: Area of watershed, 12.5 sq.miles



Borden Lake Dam - October 1936



Borden Lake Dam - May 1937



Borden Lake Dam
Highwater Spring 1937
Camp S-135 and S-76





Deer Lake and Creek Dam
Camp S- 95





Deer Creek and Lake Dam
Camp S- 95
Highwater Spring 1937





Egge Lake Dam
Camp S-53



Leppen Lake Dam
Camp S-63



Heating and Washing Sand
Lake Emily Dam
S-97





Dam Fox Lake
Camp S-97



Site of Fox Lake Dam

Camp S-97

Lake George Dam #5-037
Sec.7-139-26, Cass County, Land O'Lakes State Forest
Constructed by Camp S-97, Land O'Lakes

Enrolled Mandays - 1577: Estimated Material costs, \$1,017.00
Normal area of Lake George, 601 acres:
Area of watershed, 16 sq.miles



Lake George Dam - October 1936



Lake George Dam - May 1937



Lake George Dam
Spring 1937, Highwater
Camp S-97





Site of Hartley Lake Dam
Camp S-54



Hartley Dam & Bridge
Camp S-54
Looking Upstream(West)

Sept. 30, 1938



Hartley Dam & Bridge
Camp S-54
Looking Downstream(East)

Sept. 30, 1938



Holt Lake Dam
Camp S-135





Holt Lake Dam
Highwater, Spring 1937





Lower Rice Lake
Dam and Bridge
Camp S-141





Upper Pequawaywan Lake Dam Site
Camp S-51



Smith Pequawaywan Lake
Dam and Bridge Site
Camp S-51



Looking up-stream toward Lake

Prairie Lake Dam
Camp S-79

Looking down-stream





Prairie Lake Dam
High Water-Spring 1937

Camp S-79

Picture by Dimmick



Lower Rice Lake
 Dam and Bridge
 High Water-Spring 1937
 Camp S-141
 Picture by Dimmick



Setting Water Gauge
 Lower Rice Lake Dam

Camp S-141
 Picture by Dimmick

ROOSEVELT LAKE DAM - CAMP S-97



Down Stream View



DYKE



Close View of Abutment



Washing Gravel.



Pumping Equipment



Diaphragm Pump and Stover Motor
Camp S-54



Pile Driver Hoist



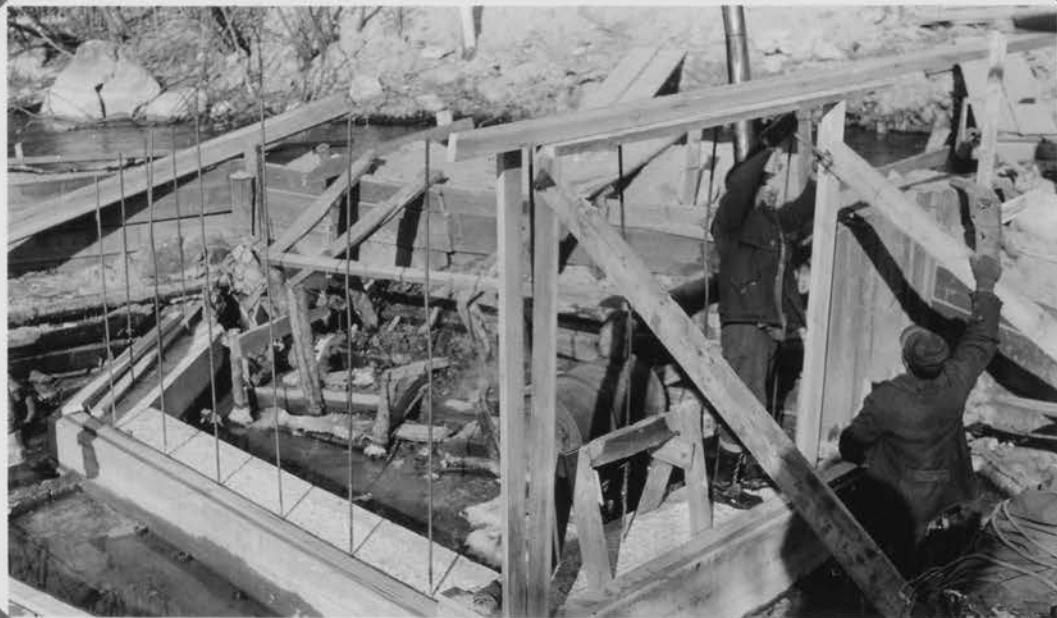
Screening Gravel



Loading Concrete Mixer



Temporary Earth Dam and
Water by-pass



Building abutment Forms



Mixing Concrete



Pouring Concrete



Pile Driver



Close-up Pile Driver

STURGEON LAKE DAM - CAMP S-53



Driving piles



Coffer Dam



Sturgeon River Dam

Camp S-53



Bending Steel



Heating Sand pile

TAMARACK LAKE DAM, CAMP S-141



Up Stream View



Down Stream View

Washburn Lake Dam #5-038
Sec,17-139-26, Cass County, Land O'Lakes State Forest
Constructed by Camp S-97, Land O'Lakes

Enrolled mandays - 1467: Estimated material costs, \$582.00
Normal area of Lake Washburn, 1575 acres:
Area of watershed, 27 Sq.miles



Washburn Lake Dam - October 1936



Washburn Lake Dam - May 1937



"Looking down stream"

Washburn Lake Dam
Camp S-97

"Looking up stream"





Washburn Lake Dam
High Water Spring 1937
Camp S-97





Site of Dam and Bridge
Wolf Lake Itasca Co.
Camp S-54



Log control dam,
Pequaywan Lake
Camp S-51



Borden Lake Dam. Near Millers Lake.
Built by Camp S-76.
Looking upstream Oct. 1936.



Lake George Dam.



Balsam Lake Dam, Itasca County.
Built by Camp S-54, Owen Lake.
Looking Downstream, June 1937.



Balsam Lake Dam, Itasca County.
Looking ~~up~~ downstream.



Balsam Lake Dam Aykes, Itasca Co.
Built by Camp S-54, Owen Lake, June 1937



Balsam Lake Dam, Itasca County.
Built by Camp S-54, Owen Lake.
Looking down stream June 1937.



Heer Lake Dam, Itasca County, built
by Camp S-95, Heer Lake. Sept. 30, 1936.



Hartley Lake Dam, Itasca County.
Built by Camp S-54, Owen Lake, Nov. 1, 1938



Wey Lake dam and bridge looking down stream.
Iowa County. By Camp S-54. Sept. 30, 1938.



Hartley Lake Dam and Bridge, Itasca County
Boy Camp S-54, Owen Lake. Oct. 30, 1938





Eagle Lake Farm Site.



Temporary Shelter for Lake Enidly Farm
By Camp S-97, Crow Wing County. Feb. 1937.



SITE OF DAM--LONG LAKE
ITASCA CO. CAMP S-54

april 1936.



Phelps Lake Dam Site.



Bridge over Wild Rice River,
By Camp S-141. Bagley, Minn.



Hartley Lake Dam, Itasca Co.
Built by Camp S-54 Nov. 1, 1938.
Looking down stream



Hartley Lake Dam
Looking up stream



Wesley Lake Dam in Alameda County, built
by Camp S-54, Owen Lake, Nov. 1, 1938





Blackduck Lake from site, Dec. 17-66-19
 St. Louis County. By Camp 3-52. Casson, Minn.
 Nov. 1936. Not authorized for construction
 because of location in Shepley-Nolan area.