



OCTOBER						
S	M	T	W	T	F	S
			1	2	3	4
5	6	7	8	9	10	11
12	13	14	15	16	17	18
19	20	21	22	23	24	25
26	27	28	29	30	31	

NOVEMBER						
S	M	T	W	T	F	S
						1
2	3	4	5	6	7	8
9	10	11	12	13	14	15
16	17	18	19	20	21	22
23	24	25	26	27	28	29
30						

RCWD BOARD OF MANAGERS REGULAR MEETING AGENDA

Wednesday, October 22, 2014, 9:00 a.m.

Shoreview City Hall Council Chambers
4600 North Victoria Street, Shoreview, Minnesota

Agenda

CALL TO ORDER

ROLL CALL

SETTING OF THE AGENDA

**APPROVAL OF OCTOBER 6, 2014 WORKSHOP MINUTES AND OCTOBER 8, 2014
REGULAR BOARD MEETING MINUTES**

CONSENT AGENDA

The following items will be acted upon without discussion in accordance with the staff recommendation and associated documentation unless a Manager or another interested person requests opportunity for discussion:

Table of Contents

Permit Applications Requiring Board Action

No.	Applicant	Location	Plan Type	Recommendation
14-054	City of Forest Lake	Forest Lake	Final Site Drainage Public/Private Drainage system Wetland Alteration	CAPROC 3 items
14-084	Transwestern	Arden Hills	Final Site Drainage	CAPROC 6 items
14-091	CSM Corporation	Fridley	Final Site Drainage	CAPROC 6 items

It was moved by Manager _____ and seconded by Manager _____, to approve the consent agenda as outlined in the above Table of Contents in accordance with RCWD District Engineer's Findings and Recommendations, dated October 13 & 15, 2014.

**PUBLIC HEARING. ON PROPOSED WATERSHED MANAGEMENT PLAN
AMENDMENTS.**

OPEN MIKE

Any RCWD resident may address the Board in his or her individual capacity, for up to three minutes, on any matter not on the agenda. Speakers are requested to come to the podium, state their name and address for the record. Additional comments may be solicited and accepted in writing. Generally, the Board of Managers will not take official action on items discussed at this time, but may refer the matter to staff for a future report or direct that the matter be scheduled on an upcoming agenda.

ITEMS REQUIRING BOARD ACTION

1. Consider findings and order related to reestablishment and correction of the drainage system records for Anoka County Ditch 31. (Phil Belfiori)
2. Consider findings and order related to reestablishment and correction of the drainage system records for Anoka County Ditch 46. (Phil Belfiori)
3. Consider draft Memorandum of Understand with City of Hugo regarding the repair the Bald Eagle Dam. (Phil Belfiori)
4. Consider Board policy for submittal of expense/per diem reimbursement claims. (Phil Belfiori)
5. Consider Extension of City of Roseville urban stormwater remediation cost-share grant agreement. (Kyle Axtell)
6. Consider R14-04: Leslie Maze, raingarden (Bald Eagle Lake) water quality BMP cost-share applications. (Samantha Kreibich)
7. Consider League of Minnesota Cities liability coverage waiver form. (Phil Belfiori)
8. Consider check register dated 10/22/2014, in the amount of \$288,644.10 prepared by Redpath and Company.

ITEMS FOR DISCUSSION AND INFORMATION

1. Staff reports.
2. November calendar.
3. Manager's update.

ADJOURNMENT

Special Workshop – Discussion on biannual engineering, accounting and Legal professional services interest proposals following regular Board meeting-Rice Lake room (behind Shoreview council chambers)

**APPROVAL OF OCTOBER 6, 2014
WORKSHOP MINUTES AND
OCTOBER 8, 2014 REGULAR
BOARD MEETING MINUTES**

RCWD BOARD OF MANAGERS WORKSHOP

Monday, October 6, 2014

Rice Creek Watershed District Conference Room
4325 Pheasant Ridge Drive NE, Suite 611, Blaine, Minnesota

1 The Board convened workshop at 2:00 p.m.

2 Attendance: –Board members, Patricia Preiner, John Waller, Barbara Haake, and Harley Ogata.

3 Absent: Steve Wagamon (with prior notice).

4 Others: Administrator Phil Belfiori; Office Manager Theresa Stasica; Lake and Stream Specialist Matthew
5 Kocian (portion of meeting); Permit Coordinator/Wetland Specialist Nick Tomczik (portion of meeting);
6 District Engineers Mark Deutschman and Chris Otterness– Houston Engineering (HEI); District Attorney
7 Chuck Holtman-Smith Partners (via phone portion of meeting); District Attorney John Kolb -Rinke Noonan
8 (portion of meeting); Jim Ascheman (portion of meeting).

9

10 At the beginning of the workshop the Board agreed to add the following items to the workshop agenda:
11 Discussion on the draft Bald Eagle Lake Dam Safety Grant Agreement, discussion on recent Army Corp of
12 Engineers (ACOE) MBI Meeting, Update on Elizabeth Hosch resignation, Update ACD 53-62 Branch 1 repairs,
13 Update on the upcoming public notice for the 10/13/14 interviews with selected engineering firms regarding the
14 Middle Rice Creek Restoration Project

15 **Bald Eagle Lake Dam Ownership/Maintenance.**

16 Staff and consultants reviewed the draft Dam Safety Grant Agreement between the State of MN and the City of
17 Hugo. Based on the Board’s review of this Dam Safety grant agreement, the Board, by majority consensus, agreed
18 that District Attorney Holtman should start to draw up a draft agreement between the District and the City of
19 Hugo for cost-sharing for the remainder of the project. The Board’s consensus discussion included that the draft
20 agreement should identify parameters of the project that will be acceptable for making cost sharing payment to
21 the City, that the District is not responsible for overruns on the project, identify that the District and City do not
22 own the dam, and the District is funding this because it is a water control structure and incorporate the
23 language from Exhibit A of the draft Dam Safety agreement.

24 **Army Corp of Engineers (ACOE) MBI Meeting.**

25 Permit Coordinator/Wetland Specialist Nick Tomczik summarized a recent meeting he and Emmy of HEI had
26 with the ACOE regarding the Browns Preserve MBI. Additional ACOE staff has become involved in the review
27 and approval of the MBI and there seems to be a fair amount of confusion in the current ACOE process. Staff
28 would contend that the ACOE staff are requesting information that had already been agreed upon with ACOE in
29 the past. District Attorney John Kolb noted that the hierarchy at ACOE seems to cause complications as field
30 staff brings projects forward for senior staff sign off. Consultants and staff suggested to the Board that a meeting
31 with ACOE staff Tim Smith to help navigate through the confusion. They will keep the Board informed.
32

33 **Discussion on zebra mussels found in White Bear Lake.**

34 Lake and Stream Specialist Matthew Kocian informed the Board that a teacher found zebra mussels in the lake.
35 On September 30th a team of folks led by the Minnesota Department of Natural Resources, including RCWD staff
36 and the White Bear Conservation District, conducted a search for the zebra mussels. They were found the zebra
37 mussels on rocks throughout the lake, not contained in one area. The Board discussed the District's involvement
38 with aquatic invasive species (AIS). In the past the District policy is that if the AIS has a proven scientific impact
39 on the lakes water quality the District would be involved. At this time the Board's consensus is that they will
40 participate if there is future evidence that it impacts water quality.

41 **Update of Rule Revision.**

42 Permit Coordinator/Wetland Specialist Nick Tomczik informed the Board that there were 5 commenters and 18
43 comments. Most of the comments were for clarification. Staff will be meeting with the Board of Water and Soil
44 Resource regarding their comments regarding CWPMPs. After these comments have been addressed the revised
45 rule will be brought back to the Board for consideration.

46 **Discussion on Anoka County Ditch 72 draft repair memo.**

47 District Engineer Otterness reviewed with the Board the repair memo and their recommendations. A revised
48 budget will be brought to the Board at a future meeting after certain sections of the system have been televised
49 to see if the tile needs to be replaced under the roadway. These repairs can be completed in segments or in a
50 single project and the Board may decide if the repairs should be done as maintenance or a project.

51 **Update on maintenance request on Ramsey County Ditch 2.**

52 Administrator Belfiori updated the Board on the recent meeting with 3 landowners that live on the Pike Lake
53 outlet that are requesting assistance to dredge the outlet channel. Engineer Otterness summarized the June 17,
54 2014 memo from Houston Engineering regarding this request. Staff identified that the residents have paid for
55 dredging in the past; they had obtained a permit from the District for this activity. Administrator Belfiori stated
56 he explained to the City and the landowners at the meeting that the District has a Natural Channel policy and
57 informed them of processes the landowners could use and that the District has an Urban Storm water
58 Remediation grant program which they could choose to apply for.

59 **Initial discussion on Anoka Ramsey Judicial Ditch 1 Branch 4.**

60 District Engineer Otterness discussed with the Board different options regarding ARJD1 Branch 4. This area had
61 come to the District's attention during the historic review and public hearing. Residents in the area had
62 attended the meetings to voice their concerns of reoccurring high water issues which existed. The options
63 District Engineer Otterness discussed with the Board were to address this issue. The options included drainage
64 alternatives or stabilizing water level. District Engineer Deutschman stressed the importance of finding out the
65 OHW from the DNR as the first step. The Board agreed by consensus that the OHW needed to be determined in
66 order to go further in the planning process.

67 **Discussion on Citizen Advisory Committee (CAC) application.**

68 Education, Outreach, and Communications Coordinator Jessica Bromelkamp informed the Board of a CAC
69 applicant who was referred to the District by the City of Fridley. The candidate has an excellent background but
70 lives slightly outside of the District boundaries. The Board by consensus agreed that a CAC member must be
71 within the District boundaries to participate on the committee.

72

73 **Update on progress of Blue Thumb strategic planning.**

74 Education, Outreach, and Communications Coordinator Jessica Bromelkamp informed the Board on what was
75 discussed at a recent strategic planning session with Blue Thumb steering committee and Metro Blooms who at
76 this time is under contract to administer the Blue Thumb program. The Blue Thumb steering committee is
77 recommending that Metro Blooms becomes the new host of the Blue Thumb program beginning January 1,
78 2015. The Board by consensus agreed with the steering committee's recommendation for Metro Blooms to
79 become the new host of the program beginning 1/1/2015.

80 **Follow-up discussion on items from future workshop agenda topics list including discussion on District**
81 **By-laws related to Board per diems.**

82 Administrator Belfiori provided the Board the current bylaws language related to current Board per diem. The
83 Board by consensus agreed to direct the Administrator to draft a Board policy for review and approval at a
84 future Board meeting which clarifies that reimbursement of expenses and per diem must be submitted by the
85 end of the fiscal year.

86 **Discussion on possible Minnesota Association of Watershed Districts (MAWD) resolutions.**

87 Administrator Belfiori informed the Board that he had spoken to the District Attorney's to see if they had any
88 possible ideas for resolutions and they did not. District Engineer Deutschman recommended a MAWD
89 resolution regarding stormwater basins in public waters. He was drawing from past history the District and HEI
90 have experienced on District projects and this issue. The Board by consensus agreed to the District Engineer
91 drafting a MAWD resolution regarding stormwater basins in public waters.

92 **Follow-up discussion on items from future workshop agenda topics list on request to add past per diems**
93 **to administrative 2015 budget, Manager Waller.**

94 Manager Ogata believed this item had already been discussed and voted on at a past Board meeting where it was
95 agreed to pay 2013 expenses. Manager Waller did not believe that it had. Administrator Belfiori replied he would
96 look at past minutes. By majority consensus the Board agreed to remove the item from the list for future
97 workshop agenda topics (this list was passed out at the workshop).

98 **Discussion on MAWD Outstanding watershed employee nominee.**

99 Administrator Belfiori informed the Board of the annual call for nominees. The Board discussed the item and by
100 consensus requested that the Administrator nominate staff that were involved in the grant proposal for the
101 targeted watershed demonstration project that the District received funding on this year.

102
103 Administrator Belfiori informed the Board that Inspector Elizabeth Hosch had turned in her resignation. She has
104 worked at the District for the past 7 ½ years and will be missed. The Board agreed and wished her the best in the
105 future. Administrator Belfiori passed out revised ACD 53-62 Br1 plan sets and Roger Schillings letter. Also,
106 Managers Haake and Waller would like to invite Board members to the 10/13/14 interviews with selected
107 engineering firms regarding the Middle Rice Creek Restoration Project. This meeting has been publicly noticed.

108 The workshop was adjourned at 4:42 p.m.

DRAFT

For Consideration of Approval at the October 22, 2014 Board Meeting.
Use these minutes only for reference until that time.

REGULAR MEETING OF THE RCWD BOARD OF MANAGERS

Wednesday, October 8, 2014

Shoreview City Hall Council Chambers
4600 North Victoria Street, Shoreview, Minnesota

Minutes

1
2
3
4
5
6
7
8
9
10
11
12
13
14
15
16
17
18
19
20
21
22
23
24
25
26
27
28
29
30
31
32
33
34
35
36
37
38
39

CALL TO ORDER

President Preiner called the meeting to order, a quorum being present, at 9:00 a.m.

ROLL CALL

Present: President Patricia Preiner, 1st Vice-Pres. Barbara Haake, 2nd Vice-Pres. John Waller, and Secretary Harley Ogata.

Absent: Manager Steve Wagamon (with prior notice)

Staff Present: Administrator Phil Belfiori, Permit Coordinator/Wetland Specialist Nick Tomczik, Technical Specialist/Permit Reviewer Chris Buntjer, Water Resource Specialist Samantha Kreibich, Office Manager Theresa Stasica.

Consultants: District Engineers Mark Deutschman and Chris Otterness, Houston Engineering, Inc. (HEI); District Attorney Louis Smith from Smith Partners

Visitors: Joe Lochner, Don Steinke.

SETTING OF THE AGENDA

No changes or additions.

Motion by Manager Haake, seconded by Manager Ogata, to adopt the agenda as presented. Motion carried 4-0.

READING OF THE MINUTES AND THEIR APPROVAL

Minutes of the September 24, 2014, Board of Managers Regular Meeting. Motion by Manager Ogata, seconded by Manager Waller, to approve the minutes as presented. Motion carried 4-0.

CONSENT AGENDA

The following applications have been reviewed by the District Engineer and Staff and will be acted upon without discussion in accordance with the Engineer's Recommendation unless a Manager or the Applicant or another interested person requests opportunity for discussion:

Table of Contents

PERMIT APPLICATIONS REQUIRING BOARD ACTION

No.	Applicant	Location	Plan Type	Recommendation
14-083	Lino Lakes Development, LLC	Lino Lakes	Final Site Drainage	CAPROC 6 items

40
41
42
43
44
45
46
47
48
49
50
51
52
53
54
55
56
57
58
59
60
61
62
63
64
65
66
67
68
69
70
71
72
73
74
75
76
77
78
79
80
81
82
83
84
85
86

Motion by Manager Ogata, seconded by Manager Waller, to approve the consent agenda as outlined in the above Table of Contents in accordance with RCWD District Engineer’s Findings and Recommendations, dated September 30, 2014. Motion carried 4-0.

OPEN MIKE – LIMIT 12 MINUTES. Any RCWD resident may address the Board in his or her individual capacity, for up to three minutes, on any matter not on the agenda. Speakers are requested to come to the podium, state their name and address for the record. Additional comments may be solicited and accepted in writing. Generally, the Board of Managers will not take official action on items discussed at this time, but may refer the matter to staff for a future report or direct that the matter be scheduled on an upcoming agenda.

There were no comments made at Open Mike.

ADDITIONAL ITEMS REQUIRING BOARD ACTION

**1. Consider Water Quality BMP Cost-Share Applications
a. R14-04: Leslie Maze, Raingarden (Bald Eagle Lake)**

District Administrator Belfiori explained Ms. Sam Kreibich will be presenting this item.

Water Resource Specialist Sam Kreibich stated this project proposes installation of 3 rock columns in a single rain garden. The rain garden will intercept runoff from approximately 0.20 acres of land (45% impervious) including several homes, the Maze’s driveway and a large yard area. The project area drains to Bald Eagle Lake, which is impaired for nutrients and is designated as a RCWD Tier 1 lake in the 2010 Watershed Management Plan.

Mr. Joe Lochner, Ramsey County Conservation District, stated this project is proposed in an existing depression area that collects runoff and has standing water for extended periods of time. Runoff does not discharge to Bald Eagle Lake during most small rain events. Larger rain events will cause a discharge, especially back-to-back rain events when the area is already flooded with runoff. The primary goal is to improve infiltration rates and storage capacity to further reduce the frequency of direct discharge to Bald Eagle Lake and also reduce the draw-down time of the basin to acceptable levels (i.e. less than 72 hours). Because this project does not have as much water quality benefit as a typical rain garden, the Ramsey SWCD has recommended a lower cost-share rate of up to 25%.

The Ramsey Conservation District estimated that the total project cost (including a 10% contingency) would be \$5,830.33. The landowner has obtained and submitted two estimates for the project (\$6,288.10 and \$5,747.85) and has submitted an application to encumber up to \$1,436.96 in cost-share funding for this project, not to exceed 15% of eligible project expenses.

RCWD Staff finds that the project has a private drainage issue benefit that is as great as or greater than the public water quality benefit. However, the reduction of direct runoff to Bald Eagle Lake cannot be ignored and the project is in an area where the District is actively promoting the installation of rain gardens. The addition of the rock columns is an innovative approach to encouraging infiltration in heavier soils. The Ramsey SWCD’s recommendation of a lower cost-sharing percentage is appropriate, given the unique circumstances associated with this project.

Based on submitted documents, RCWD staff supports the project and recommends to the RCWD Board of Managers that this project be awarded up to \$1,436.96 in RCWD Water Quality BMP Cost-Share funding, not to exceed 25% of eligible project expenses, in accordance with program guidelines.

87 This proposal was considered by the RCWD Citizen Advisory Committee at its meeting held on October 1, 2014.
88 The CAC discussed the application and passed a motion recommending that the RCWD Board of Managers
89 approve this project for up to \$1,436.96 in cost-share funding, not to exceed 25% of eligible project expenses.
90

91 RCWD's Citizen Advisory Committee and Staff recommend that the RCWD Board of Managers approve Water
92 Quality BMP Cost-Share funds for Leslie Maze Rain garden Project.
93

94 Manager Ogata did not think they have ever done a project at 25% of cost. He stated the project has always been
95 rated high enough to be qualified for the program or not. He was not sure that he agreed with the 25% model. He
96 thought it met the minimum point value of 30.
97

98 Manager Haake indicated she was at the AC meeting and it was agreed at that time to approve on the 25% but
99 she agreed with Manager Ogata. She thought they have done 25% before with a cost share with other entities.
100 She noted this has already been holding water and operating that way. She indicated this is an improvement and
101 thought that since it is already functioning the way they want it she understood the 25% portion. She was not
102 worried about setting a precedent. Manager Ogata was suggesting they actually do this project at the normal
103 amount of 50% and did not see any reason to deviate from that. It was holding water and now will infiltrate water,
104 which is a big difference.
105

106 Manager Ogata indicated this project is two houses from a major project that the Board funded on new
107 construction involving a home that was constructed there. President Preiner indicated if Manager Ogata wanted
108 to make that recommendation, she did not have a problem with it.
109

110 ***Motion by Manager Haake, seconded by President Preiner, to approve RCWD Water Quality BMP Cost-Share***
111 ***Contract R14-04 for Leslie Maze rain garden project, up to \$1,436.96, not to exceed 25% of eligible project***
112 ***expenses, in accordance with established program guidelines.***
113

114 Commissioner Waller agreed that 50% is what they usually do for the small land owners but he takes exception
115 with the issue about the roads not contributing a great deal. He thought the roads funnel a lot of water into the
116 lake so any water they can keep from going off the roads into the lake is important. Small land owners are
117 generally given 50%. He realized it is an improvement and has some value. Because it is a small land owner, he
118 does not have a problem with paying for 50% of the project costs.
119

120 **ROLL CALL:**

121 ***Manager Waller – Nay***

122 ***Manager Haake – Aye***

123 ***Manager Ogata – Nay***

124 ***President Preiner – Aye***
125

126 ***Motion failed 2-2.***
127

128 ***Motion by Manager Ogata, seconded by Manager Waller, to approve RCWD Water Quality BMP Cost-Share***
129 ***Contract R14-04 for Leslie Maze rain garden project, up to 50% of eligible project expenses, in the amount of***
130 ***approximately \$2,872, in accordance with established program guidelines.***
131
132

133
134
135
136
137
138
139
140
141
142
143
144
145
146
147
148
149
150
151
152
153
154
155
156
157
158
159
160
161
162
163
164
165
166
167
168
169
170
171
172
173
174
175
176
177
178
179

ROLL CALL:

- Manager Waller – Aye**
- Manager Haake – Nay**
- Manager Ogata – Aye**
- President Preiner – Nay**

Motion failed 2-2.

Manager Haake indicated this will need to be held over until Manager Wagamon is present to vote.

Motion by Manager Haake, seconded by President Preiner, to table this item until the October 22, 2014 meeting or until all members are present to vote.

Manager Haake asked that staff relay to the applicants that they will be getting somewhere between 25-50% of the cost share.

District Administrator Belfiori stated Mr. Lochner has been working with the homeowners extensively and at the Advisory Committee the land owner anticipates doing this project independent of this decision and he was understanding that they want to get going on this before the ground freezes up on them to do the work. Mr. Lochner indicated that was correct and wanted to get the project going before spring because that is when the problem occurs.

Member Haake indicated in her motion the homeowners will be getting anywhere from 25-50% of the cost back so they should proceed with the project.

Motion carried 4-0.

b. R14-05: Bonaventure Condo Association, Raingarden Retrofits (Lake Josephine)

Water Resource Specialist Sam Kreibich explained the Bonaventure Condo Association is located off Lexington Avenue in Roseville, MN. This largely impervious site is composed of an asphalt parking lot and flat roof building and garage. The site is positioned on steep slopes to the north and south of the property, causing concentrated flows and erosion to occur on site. Current drainage patterns discharge parking lot and roof runoff to the southeastern corner of the site, where runoff enters onto Lexington Avenue, and to the southwestern corner of the site, where runoff enters into a wetland complex. Ultimately, all drainage onsite discharges into Lake Josephine. Lake Josephine is designated as a Tier I lake in the 2010 Watershed Management Plan and is approximately 118 acres in size with an 839 acre watershed.

In order to remediate the current drainage problem, this retrofit proposes the removal of bituminous pavement in order to install a series of filtration and bio filtration basins. The proposed design will include 7 total rain gardens, 4 that will capture roof runoff through existing sub-surface drain tiles and 3 basins that will capture parking lot runoff.

The Ramsey Conservation District has estimated that the total project cost (including a 10% contingency) will be \$57,887.52. This cost includes the demolition, curbing, and paving needed for the 3 parking lot rain gardens. The landowner has submitted an application to encumber up to \$28,500.00 in cost-share funding for this project, not to exceed 50% of eligible project expenses.

180 Based on submitted documents, RCWD staff supports the project and recommends to the RCWD Board of
181 Managers that this project be awarded up to \$28,500.00 in RCWD Water Quality BMP Cost-Share funding, not to
182 exceed 50% of eligible project expenses, in accordance with program guidelines.
183

184 This proposal was considered by the RCWD Citizen Advisory Committee at its meeting held on October 1, 2014.
185 The CAC discussed the application and passed a motion recommending that the RCWD Board of Managers
186 approve this project for up to \$28,500.00 in cost-share funding, not to exceed 50% of eligible project expenses.
187

188 Mr. Lochner of the Ramsey County Conservation District reviewed the project technical aspects with the Board.
189

190 Manager Waller stated the diagram has thirty parking spots and wondered if there were thirty condos. Mr.
191 Lochner indicated there was also some garage parking as well so there are more than thirty condos. Manager
192 Waller stated individual tax ID numbers would exceed thirty so it would be less than \$1,000 per unit. Mr. Lochner
193 believed it would exceed thirty units but was not sure about the numbers.
194

195 Manager Ogata wondered if it was determined if the Ramsey County Conservation District would be able to
196 contribute some funds to the project. Mr. Lochner stated they currently do not have grants that would be
197 applicable to do high density residential units.
198

199 Manager Ogata wondered when the project was planned to start. Mr. Lochner indicated it would be the spring of
200 2015 and they would know in the first few weeks in January if they have received the 2015 grant.
201

202 Manager Ogata asked if they do receive grant monies would the amount per homeowner possibly decrease. Mr.
203 Lochner stated it would like be 25% rather than 50%. He stated the percentage as is would be 50% Rice Creek, 25%
204 Ramsey Conservation District, if they receive the funds and 25% Bonaventure Condo Association.
205

206 Manager Ogata stated that was opposite of what was discussed in the previous case and they have never
207 contributed an amount that would result in access of 50% to the owner. Manager Waller thought they have
208 contributed more than 50% to a project where the homeowner has received more than 50% from government
209 entities.
210

211 District Administrator Belfiori reviewed a couple of projects that were funded for more than 50%. He noted there
212 has been fluctuation of the costs in the past.
213

214 Manager Ogata wondered if they paid the \$28,500 out of their Ramsey County grant, how much money would
215 they have left. Water Resource Specialist Sam Krybeck stated none would actually come out of the budget, it is
216 funds they have had left over from previous years.
217

218 District Administrator Belfiori stated if they chose to approve the \$28,500, 50% of costs, they would exceed the
219 \$50,000 in Ramsey County. This is not a Board policy and has never been formalized as a position. It is a guideline
220 but has not been formalized. He stated the cost share program is a dedicated fund and they have significant
221 carryover in the area of \$55,000 so even with this cost there would be an excess of \$30,000-\$40,000 in the
222 carryover fund as well. The other two Counties have not seen a lot of cost share and will not affect the budget.
223

224 Manager Ogata asked if they anticipated any further applications from Ramsey County this year. Mr. Lochner
225 thought there could be another residential or two but did not anticipate any large scale projects.
226

227 Manager Haake wondered when the work will begin. Mr. Lochner indicated it would be the spring of 2015.
 228 Manager Haake wondered if this could be tabled until Ramsey County finds out if they received the grant for this.
 229 Mr. Lochner thought that would be appropriate.

230
 231 **Motion by Manager Haake, seconded by President Preiner, to table RCWD Water Quality BMP Cost-Share**
 232 **Contract R14-05 for Bonaventure Condo Association – Stormwater Retrofit Water Quality Project until the**
 233 **early part of 2015 after it is determined what Ramsey Conservation District may be awarded for this project**
 234 **because the project will not begin until Spring 2015.**

235
 236 **ROLL CALL:**
 237 **Manager Waller – Nay**
 238 **Manager Haake – Aye**
 239 **Manager Ogata – Aye**
 240 **President Preiner – Aye**

241
 242 **Motion carried 3-1.**

243
 244 Manager Waller indicated he voted nay because there is plenty of information available to them and they do not
 245 have a hard policy regarding the total amount of money someone receives. He thought it might be something
 246 they could discuss in the future.

247
 248 **2. Consider Check Register dated 10/8/14, in the amount of \$45,842.30, prepared by HLB Tautges Redpath.**
 249 **Motion by Manager Ogata, seconded by Manager Haake, to approve check register dated 10/8/14, in the**
 250 **amount of \$45,842.30, prepared by HLB Tautges Redpath. Motion carried 4-0.**

251
 252 **ITEMS FOR DISCUSSION AND INFORMATION**

253 **1. Presentation on Anoka County Ditch 31/46 Historical Review Memos and Discuss Noticing of Landowner**
 254 **Information Meeting or Public Hearing.**

255 District Engineer Otterness explained previous work completed by Houston Engineering, Inc. (HEI) for the Rice
 256 Creek Watershed District included the preparation of a Repair Report dated February 17, 2010 and associated
 257 Historical Review Memorandum dated January 22, 2010 for the Anoka County Ditch (ACD) 31 public drainage
 258 system. The Board of Managers accepted the Historical Review Memorandum and the Repair Report and
 259 discussed the preferred repair alternative, but took no action on the As-Constructed and Subsequently Improved
 260 Condition. Additional discussion has occurred at the staff level about the best approach to repair the system since
 261 the completion of these documents. To provide more detailed analysis of the ACSIC of ACD 31, test pits were
 262 completed to determine the original ditch bottom. Based on the data provided by the test pit excavations, it is
 263 recommended that the alignment and profile of the As-Constructed and Subsequently Improved condition for
 264 ACD 31 be formally adopted by the Board through a legal drainage proceedings per MS103E.10. The District
 265 Engineer further recommends that the Board of Managers petition BWSR to adjust the District boundary to
 266 incorporate the entire contributing drainage area from ACD 31.

267
 268 Manager Ogata wondered how long it takes to realign the District’s boundaries with BWSR. District
 269 Administrator Belfiori indicated it takes a matter of a few months. There needs to be a public hearing.

270
 271 Manager Ogata wondered if they will need to notice the landowners outside of the District Boundary. District
 272 Administrator Belfiori indicated all of the landowners will be notified that are within the drainage system,

273 including those outside of the District boundary. Staff would recommend a landowner information meeting
274 regarding the historical review memorandum prior to a public hearing.
275

276 President Preiner wondered if public meetings on the two public drainage systems should be separated in view of
277 the time differences. Member Ogata stated he was thinking long term and asking them to be a part of a Water
278 Management District.
279

280 Permit Coordinator/Wetland Specialist Tomczik stated a sideline issue that might interest the Board is if they do
281 bring the parcels into the jurisdictional boundary the Columbus CWPMP would not automatically apply to those,
282 it would just be the straight District rule. They might have a different process to get it under the Columbus
283 CWPMP.
284

285 District Administrator Belfiori indicated the landowner information meeting is not on the repair, it would be on
286 identifying the alignment, grade and dimension of the drainage systems.
287

288 President Preiner wondered if there was anything that could be done in the short term for the culvert that does
289 not exist on Camp Three Road. District Engineer Otterness recommended against doing that right now because
290 there may be wetland impacts that might result from doing that and he believed they have already shown that
291 with some of analysis already done. They would be impacted by a full repair and would need to be mitigated. He
292 would recommend installation of a new culvert under Camp 3 Road be completed with the overall repair project
293 project. There is also a concern that if a culvert were to be replaced at that location it may become full of
294 sediment very quickly due to the condition of the ditch.
295

296 President Preiner wondered if the Board needs to tell the developer where a culvert is to be placed. District
297 Engineer Otterness stated when a culvert is placed the developer is supposed to come in to get a permit and will
298 be reviewed as to where the construction of the culvert is placed and will aid in the correct placement going
299 forward.
300

301 President Preiner wondered at what point the Board makes sure the culverts are installed correctly. District
302 Engineer Deutschman stated if they come for a permit it gets reviewed internally and if there is an as constructed,
303 they are told at what elevation to place the culvert.
304

305 President Preiner asked what jurisdiction the Board has if the culverts are installed wrong. Permit
306 Coordinator/Wetland Specialist Tomczik indicated it is a violation of the permit and the Board has the authority
307 to require the correction.
308

309 Permit Coordinator/Wetland Specialist Tomczik stated if the permit requirements were not followed the District
310 can verify a violation and look to have it corrected and if there is not a permit and the landowner was obligated to
311 have one that is also a violation.
312

313 District Engineer Deutschman indicated they do systematic repair of the system because they look at all of the
314 culverts and their function simultaneously and they make sure they are all reset during the repair process so they
315 work right.
316

317 Manager Waller thought a lot of the culverts were installed before the District was concerned about repairs for the
318 drainage system or the permitting issues. He thought this was a retrofit, cleanup of those problem culverts.
319 President Preiner thought some of it was new housing that has been built in that area so she was wondering how
320 they could catch the issues.

321
322
323
324
325
326
327
328
329
330
331
332
333
334
335
336
337
338
339
340
341
342
343
344
345
346
347
348
349
350
351
352
353
354
355
356
357
358
359
360
361
362
363
364
365
366
367
368

District Engineer Otterness continued with his presentation and indicated the next steps the Board should take is to schedule a Public Meeting or Public Hearing. He noted this is not the only place in the District where there are differences between the district boundary and the actual Watershed coming to the District.

Member Waller wondered if a landowner and former Manager Steinke of Anoka County would like to make a comment.

Mr. Don Steinke stated ACD 46 is non-functioning. Discussing ACD 31, he wondered how the subsequent improved condition part worked because everything from branch 5, 6, 7 and branch 1 and 2, is all being conveyed through the private serving public function section of the ditch. District Engineer Otterness stated that portion of the system was created privately a long time ago and was not considered a part of the public drainage system. They had provided a recommendation in the original repair report to make this private ditch a part of the public drainage system but at this time he would not consider it a part of the system even though it is providing the capacity and conveyance for the public drainage system. They are taking a second look at the alternatives to look at the costs of making it a part of the public drainage system versus what the cost would be of restoring the drainage along the existing system that has become blocked and is no longer functioning. The recommended repair is a separate issue from what the actual as-constructed condition of the ditch is.

Mr. Steinke thought an alternative utilizing the private drainage system should still be considered because without that portion, the ditch does not function. District Engineer Otterness stated they will be looking at both options to repair the part of the system and then weigh out the costs. There will be substantial costs for acquiring easements as well and also wetland costs, which have not been borne out yet.

President Preiner indicated she would like to separate the process for two ditches (ACD 31 and ACD 46) and schedule the meetings because they are such different issues. District Engineer Deutschman agreed.

2. District Engineer Update and Timeline

District Engineer Deutschman reminded the Board that in addition to the drainage system work they are doing, the big push is with Hanson Park and Mirror pond feasibility studies, keeping it going and getting the concepts together.

3. Staff Report

District Administrator Belfiori stated the Met Council is currently working on a study for looking at potential recharge areas and looking at storm water reuse in the NE study areas. The engineers working on this study will be coming to the November 13, 2014 Board Meeting to give a presentation on this project, focusing on potential long term outcome of identifying recharge infiltration areas and potential reuse type demonstration projects in the area. One area they will be focusing on is the Greater White Bear Lake area.

Permit Coordinator/Wetland Specialist Tomczik stated Longview Estates applicant recorded the plat and a permit was issued so there is not a need to hold a compliance hearing, which was granted at the last meeting.

4. Manager's Update

Manager Waller stated he was at the Hugo City Council meeting and they decided to do an urban renewal project on Victor Gardens because it was built poorly on a large lump of clay. He noted drainage was put into the basements. He reviewed the issue with the Board and noted there were six more lots that were built on that had the same issue and Mr. Schwab asked the Council for approximately \$4,000 in funding to make the corrections. He suggested at the meeting for the Council to authorize the dollars that could be spent for the citizens to relieve

369 them for the flooding of their basements and make application under the Districts Urban Renewal Storm Water
370 process. He stated the Board will be seeing an application for this at a future meeting.

371
372 President Preiner wondered if the six additional homes were built after the problem with the other homes was
373 discovered and if so, why they were not built properly. Manager Waller was not sure if they were built before or
374 after the problem was discovered.

375
376 Manager Waller indicated he attended the Washington County's Annual Forum for Water Governance with
377 District Administrator Belfiori.

378
379 Manager Ogata stated in the White Bear Press there was an article by Jessica Bromelkamp, RCWD Education
380 Outreach and Communication Coordinator, about Zebra Mussels and he thought it was well written and timely.
381 He also noted on the front page there was a discussion about the newest position on the White Bear Lake group
382 that brought the lawsuit against the DNR and they are moving forward with the lawsuit but have determined it is
383 going to take too long to get the lake back up to its proper depth so they are looking at moving forward with
384 some type of augmentation. They are looking at hooking up to Lake Vadnais, which connects to the Mississippi
385 River, and have determined the costs that were projected by the Met Council were way to high and could be done
386 for five million rather than ten million.

387
388 **ADJOURNMENT**

389 ***Motion by Manager Haake, seconded by President Preiner, to adjourn the meeting at 10:14 a.m. Motion carried 4-0.***

390

CONSENT AGENDA

The following items will be acted upon without discussion in accordance with the staff recommendation and associated documentation unless a Manager or another interested person requests opportunity for discussion:

Table of Contents

Permit Applications Requiring Board Action

No.	Applicant	Location	Plan Type	Recommendation
14-054	City of Forest Lake	Forest Lake	Final Site Drainage Public/Private Drainage system Wetland Alteration	CAPROC 3 items
14-084	Transwestern	Arden Hills	Final Site Drainage	CAPROC 6 items
14-091	CSM Corporation	Fridley	Final Site Drainage	CAPROC 6 items

It was moved by Manager _____ and seconded by Manager _____, to approve the consent agenda as outlined in the above Table of Contents in accordance with RCWD District Engineer's Findings and Recommendations, dated October 13 & 15, 2014.

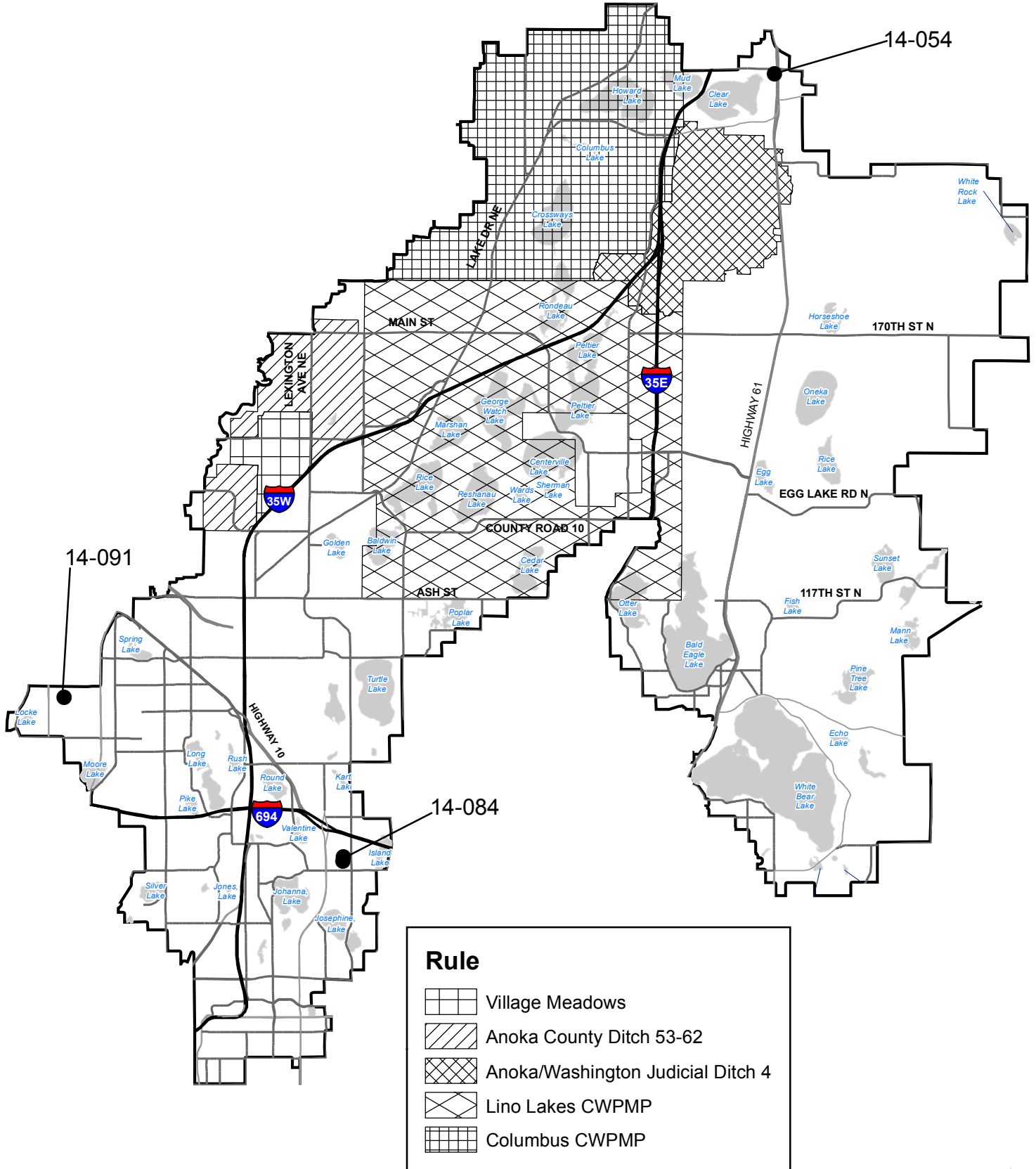
**RICE CREEK WATERSHED DISTRICT
CONSENT AGENDA**

October 22, 2014

It was moved by _____ and seconded by _____ to Approve, Conditionally Approve Pending Receipt Of Changes, or Deny, the Permit Application noted in the following Table of Contents, in accordance with the District Engineer's Findings and Recommendations, as contained in the Engineer's Findings and Recommendations, as contained in the Engineer's Report dated October 13 & 15, 2014.

TABLE OF CONTENTS

<u>Permit Application No.</u>	<u>Applicant</u>	<u>Page</u>	<u>Recommendation</u>
Permit Location Map		18	
14-054	City of Forest Lake	19	CAPROC
14-084	Transwestern	24	CAPROC
14-091	CSM Corporation	29	CAPROC





WORKING DOCUMENT: This Engineer's report is a draft or working document of RCWD staff and does not necessarily reflect action by the RCWD Board of Managers

Permit Application Number:

14-054

Permit Applicant Name:

Clear Lake Improvement Project

Applicant:

Aaron Parrish
City of Forest Lake
21350 Forest Lake Blvd N
Forest Lake, MN 55038
Ph: 651-209-9750
Fx: 651-464-6874
Aaron.parrish@ci.forest-lake.mn.us

Consultant:

Tim Olson
Bolton & Menk, Inc.
2035 County Road D East, Suite B
Maple wood, MN 55109
Ph: 651-704-9970
Fx: 651-704-9971
timol@bolton-menk.com

Project Name: Clear Lake Improvement Project

Purpose: FSD – Final Site Drainage, PDS – Public/Private Drainage System, WA – Wetland Alteration; Water Quality

Site Size: 1.58 ± acres of disturbed area; no existing or proposed impervious area

Location: Adjacent to the north of the City Center site, bounded on the east by Hwy 61, the north by the Winnick Property, and West by Hardwood Creek Trail in Forest Lake, MN

T-R-S: NE ¼, Section 17, T32N, R21W

District Rule: D, F, I

Recommendations: CAPROC

It is recommended that this Permit Application be given Conditional Approval Pending Receipt of Changes (CAPROC) and outstanding items related to the following items.

Rule F – Wetland Alteration

1. The applicant must submit the executed wetland bank withdrawal form for signature by RCWD. The applicant must send the withdrawal form along with appropriate fees to BWSR for processing.
2. The applicant must forward BWSR documentation debiting the utilized wetland bank.

Administrative

3. Send one final, signed full sized plan set to the District.

Stipulations: The permit will be issued with the following stipulations as conditions of the permit. By accepting the permit, applicant agrees to these stipulations:

1. An as-built survey of all stormwater BMPs (ponds, rain gardens, trenches, swales, etc.) is to be submitted to the District for verification of compliance with the approved plans.
2. An as-built survey of wetland boundaries including quantification of wetland impact is to be submitted for verification that wetland impact does not exceed amount proposed.

Exhibits:

1. Signed plan set containing 14 sheets, dated 5-19-2014 and received 9-29-2014.
2. Permit application, dated 6-13-2014 and received 8-25-2014.
3. Project narrative, dated 6-12-2014 and received 8-25-2014.
4. Response to initial comments, dated 6-13-2014 and received 8-25-2014.
5. Wetland Type and Boundary Application dated 6-30-2014 received 7-8-2014.
6. Notice of Application Boundary dated 7-8-2014.
7. Statement of Intended Impacts, dated 7-16-2014 and received 8-25-2014.
8. Updated Wetland delineation memo, dated 7-18-2014 and received 8-25-2014.
9. Notice of Decision Boundary dated 8-6-2014.
10. Wetland Replacement Plan dated 8-6-2014 and received 9-17-2014.
11. Autodesk's Storm and Sanitary Analysis (SSA) hydraulic/hydrologic model of existing and proposed conditions of area surrounding project site, received 9-11-2014.
12. Notice of Application Replacement, dated 9-16-2014 and received 9-16-2014.
13. Response to Incomplete Permit Application including information about party responsible for maintenance of all erosion and sediment control measures and NPDES permit information, dated 9-25-2014 and received 9-29-2014
14. Permit Application signed by successful bidder, dated 9-25-2014 and received 9-29-2014.
15. Erosion and Sediment Control Specifications, undated and received 9-29-2014.
16. Revised Wetland Replacement Plan Application dated and received 10-1-2014.

Findings:

1. Description – The project is located at the City of Forest Lake Safety and City Hall Site, previously permitted under 13-064. In addition to the permit requirements which were met (and are not proposed to be modified), the City also received a BWSR grant for four bio-retention locations and an additional stormwater pond to treat off-site runoff. The proposed work was within the site foot print of 13-064, and thus covered by Rule D. The proposed work includes modification to Winnick Ditch, which is classified as a private drainage system, to provide water quality treatment to off-site runoff. The water quality treatment is not proposed to be used for future permits.
2. Stormwater – The project will not add any impervious area nor modify the BMPs required to meet the Rule C requirements of permit 13-064. Thus Rule C is not applicable.
3. Wetlands – A wetland delineation was completed for the project site. The wetland boundary application was submitted to the District, noticed and an administrative wetland boundary decision made on 8-6-2014. The applicant submitted a wetland replacement plan on 9-16-2014. The application was noticed on the same day. The TEP met with the applicant and consultant on 9-30-2014 and discussed application concerns. The comment period closed on 10-7-2014. The applicant responded to all comments; providing a revised wetland application. The applicant has met the sequencing requirements of the individual wetland impacts meeting MN Rule 8420.0520 and Rule F.5(a). (The project proposes impact to the "incidental wetland area." RCWD

concluded with the incidental classification in the wetland boundary notice of decision.) The total amount of wetland impacts for replacement is 8,740 square feet. As per MN Rule 8420.0522, the replacement ratio is 2.5:1. The applicant proposes wetland replacement by withdrawal from an approved wetland bank, #1375, within the same bank service area. The applicant followed the proper sequencing requirement of 8420.0522 subpart 7.C. Therefore, consistent with MN Rule 8420.0522, the replacement ratio is 2:1. The total amount to be withdrawn from the wetland bank #1375 is .4 acres. The applicant must submit the executed wetland bank withdrawal form for signature by RCWD. The applicant must send the withdrawal form along with appropriate fees to BWSR for processing. The applicant must provide proof of withdrawal to RCWD for permit issuance.

4. Floodplain – The site is not in a regulatory floodplain.
5. Erosion Control – Proposed erosion control methods include silt fence, rock construction entrances, inlet protection and rip rap. NPDES permit number C0036697 applies to this project. Kyle Dunaway of Dunaway Construction at 17149 Notre Dame St., Columbus, MN 55025 with phone number 651-464-1985 and email address kyle@dunawayconst.com is responsible for maintenance of all erosion and sediment control onsite. A SWPPP is detailed in the submitted Erosion and Sediment Control Specifications and is associated with the SWPPP of the current construction of the City Hall on the adjoining site. Otherwise, the project complies with RCWD Rule D requirements.
6. Drainage Systems - The project is not part of a statutory public drainage system. The applicant has provided modeling to demonstrate no adverse impact upstream or downstream of the project. Water Surface Elevations at key upstream locations are listed below:

	Water Surface Elevations at Key Upstream Locations					
	2-year		10-year		100-year	
	Existing	Proposed	Existing	Proposed	Existing	Proposed
HWY 61 Median Swale Near North Entrance to City Hall Site	898.46	898.46	899.11	899.11	899.82	899.82
Wetland East of HWY 61	897.95	897.95	899.31	899.30	901.66	901.65

The project preserves the capacity of the drainage system, improves water quality, and prevents loss of drainage. Therefore, it is in compliance with all provisions of Rule I.

7. Previous Permit Information – Previous permit 13-064 is associated with this site in addition to 13-036 and review file 13-012R.

I assisted in the preparation of this report under the supervision of the District Engineer.

Garrett Monson 10-13-14

Garrett Monson, EIT

I hereby certify that this plan, specification or report was prepared by me or under my direct supervision and that I am a duly Registered Professional Engineer under the laws of the state of Minnesota.

Greg Bowles 10-13-14

Greg Bowles
MN Reg. No 41929



- = Project Boundary
- = Bioretention Swale
- = Tree Trench
- = Regional Water Quality Area



Permit Application Number:

14-084

Permit Applicant Name:

Transwestern Buildings 6+7 Parking Expansion

Applicant:

Chris Hansen
Transwestern
3775 Dunlap Street
Arden Hills, MN 55712
Ph: 612-749-1165
Fx: 651-481-0830
chris.hansen@transwestern.com

Consultant:

Steve Gebauer
Clark Engineering Corporation
621 Lilac Drive North
Golden Valley, MN 55422
Ph: 763-595-3133
Fx: 763-525-1666
sgebauer@clark-eng.com

Project Name: Transwestern Buildings 6+7 Parking Expansion

Purpose: FSD – Final Site Drainage; Expand existing parking lots

Site Size: Parcel 1: 2.7± acres, Parcel 2: 8.1± acres / 0.834 ± acres of disturbed area; project will add 0.39± acres and disturb an additional 0.05± of impervious area

Location: 1160 Grey Fox Road & 3728 Dunlap Street, Arden Hills

T-R-S: SE ¼, Section 27, T30N, R23W

District Rule: C, D

Recommendations: CAPROC

It is recommended that this Permit Application be given Conditional Approval Pending Receipt of Changes (CAPROC) and outstanding items related to the following items.

Rule D – Erosion and Sediment Control

1. Per Rule D.4(c), submit the name, address and phone number of party responsible for maintenance of all erosion and sediment control measures.

Administrative

2. Send one final, signed full sized plan set to the District, and e-mail a pdf copy to both the District and the District Engineer (or indicate if the set received 10-3-2014 is the final set).
3. If required by the City of Arden Hills, the applicant must submit a draft legal document providing satisfactory form and description granting ponding and flowage easements over all onsite ponds, wetlands, and other hydrologic features.
4. The applicant must submit a Draft Declaration for Maintenance of Stormwater Management Facilities acceptable to the District for proposed onsite stormwater management and pretreatment features.
5. The applicant must submit a copy of receipt from County Recorder and signed/notarized attested legal document(s).

- The applicant must submit a cash surety of \$2,400 along with an original executed escrow agreement acceptable to the District. If the applicant desires an original copy for their records, then two original signed escrow agreements should be submitted. The surety is based on \$1,000 for > 1 acre of disturbance, and \$1,400 for 2,703 CF of storm BMPs.

Stipulations: The permit will be issued with the following stipulations as conditions of the permit. By accepting the permit, applicant agrees to these stipulations:

- An as-built survey of all stormwater BMPs (ponds, rain gardens, trenches, swales, etc.) is to be submitted to the District for verification of compliance with the approved plans before return of the surety.

Exhibits:

- Revised plan set containing 5 sheets dated and received 10-3-2014.
- Permit application, dated and received 8-15-2014.
- Permit application checklist, no date, received 8-15-2014.
- Stormwater Calculations, dated 8-14-2014 and received 8-15-2014, containing narrative, soil borings, drainage maps, HydroCAD report for the 2-year, 10-year, 100-year rainfall events for proposed and existing conditions, BMP Operation & Maintenance Activities information.
- Revised Stormwater Calculations, dated and received 10-3-2014, containing narrative, soil borings, drainage maps, HydroCAD report for the 2-year, 10-year, 100-year rainfall events for proposed and existing conditions, BMP Operation & Maintenance Activities information.

Findings:

- Description – The project proposes to expand the parking lots on two parcels in Arden Hills. The project will add 0.39± acres of new and disturb an additional 0.05± acres impervious surface. Overall, the project will disturb 0.834± acres total. Both lots drain to the city storm sewer in Grey Fox Drive, and ultimately to Lake Valentine, the Resource of Concern. The applicant has submitted a \$1,100 application fee, corresponding to less than 1 acre of new/redeveloped impervious surface and less than 1 acre of land disturbance.
- Stormwater – The applicant is proposing the BMPs as described below for the project:

Proposed BMP Description	Location	Pretreatment:	Volume provided below outlet*
Surface bio-filtration basin	North of Grey Fox Road	Rip-rapped depressional area	3,526± cubic feet
Surface bio-filtration basin (F1)	South of Grey Fox Road	Rip-rapped depressional area and sump in CBMH 102	11,574± cubic feet

*includes filtration media storage

Soils on site are primarily HSG D sandy lean clay (CL). Thus, infiltration is not considered feasible and bio-filtration is acceptable to meet the water quality requirement. Per Rule C.6(c)(1), the Water Quality requirement is 1.69-inches over the new/reconstructed area (0.44± acres) for a total requirement of 2,703± cubic feet. The soil borings indicate mottling (a seasonal high water (SHW) indicator) nears the surface. The applicant has provided a 12-inch clay liner at the bottom of the basins. This will provide separation from the SHW and is adequate to meet the Rule

C.9(c)(4) requirements. Thus, the basins design meets all the Rule C.9(c) design criteria and the applicant has met the water quality requirements of Rule C.6.

Drainage Area	2-year (cfs)		10-year (cfs)		100-year (cfs)	
	Existing	Proposed	Existing	Proposed	Existing	Proposed
From south lot	8.18	4.18	12.71	5.04	17.05	12.91
From north lot	0.58	0.68	1.16	1.11	1.92	1.57
Totals	8.76	4.81	13.87	6.09	18.88	14.48
80% of Existing	7.01		11.10		15.10	

The project is located within the Flood Management Zone. The applicant has complied with all the rate control requirements of Rule C.7, as the 2-year increase from the north lot is within the tolerance of the model.

The applicant has complied with the Rule C.9(g) freeboard requirements.

3. Wetlands – There are no wetlands located within the project area.
4. Floodplain – The site is not in a regulatory floodplain.
5. Erosion Control – Proposed erosion control methods include silt fence, rock construction entrances, inlet protection and rip rap. The project will disturb less than one acre. Therefore, an NPDES permit is not required for the project. The information listed under the Erosion and Sedimentation Control Recommendations needs to be submitted. Otherwise, the project complies with RCWD Rule D requirements.
6. Documenting Easements and Maintenance Obligations – Applicant must provide draft drainage and flowage easements (if required by the City), and a draft maintenance declaration for review, and receipt showing recordation once approved. The applicant should use the Declaration for Maintenance of Stormwater Facilities Template found on the District website.
7. Previous Permit Information – No previous permit information was found for this site.

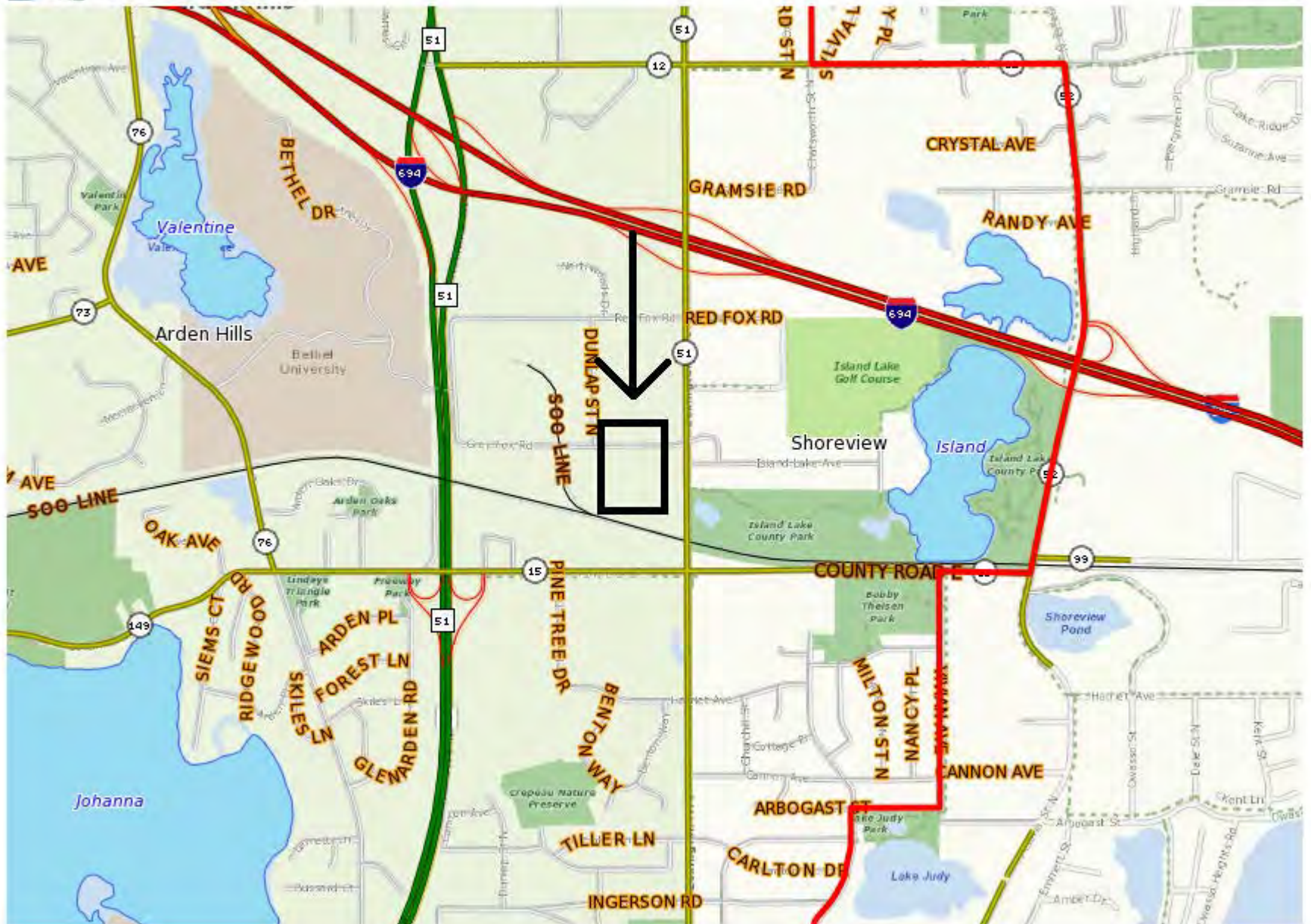
I hereby certify that this plan, specification or report was prepared by me or under my direct supervision and that I am a duly Registered Professional Engineer under the laws of the state of Minnesota.

 10-13-14

Greg Bowles
MN Reg. No 41929

 10-13-14

Katherine MacDonald
MN Reg. No 44590



— = Project Boundary



Both lots drain to the city storm sewer in Grey Fox Road, and ultimately to Lake Valentine, the Resource of Concern.

— = Project Boundary — = Bio-retention Basin — = Direction of Stormwater Flow



WORKING DOCUMENT: This Engineer's report is a draft or working document of RCWD staff and does not necessarily reflect action by the RCWD Board of Managers.

Permit Application Number:

14-091

Permit Project Name:

CSM North Central Business Park

Applicant:

Bradley Kittleson
CSM Corporation
500 Washington Avenue South
Minneapolis, MN 55415
Ph: 612-395-7080
Fx: 612-395-2751
bkittleson@csmcop.net

Consultant:

Todd A. Erickson
Erickson Civil
333 North Main Street Suite 201
Stillwater, MN 55082
Ph: 612-309-3804
todd@tericksonllc.com

Project Name: CSM North Central Business Park

Purpose: FSD – Final Site Drainage; Pavement rehabilitation

Site Size: Parcel is 9.40± acres, with 2.05± acres of disturbed area and 1.18± acres of new/reconstructed impervious surface area.

Location: 490 Northco Drive, Fridley

T-R-S: SE ¼ Section 11, T30N, R24W

District Rule: C, D

Recommendations: CAPROC

It is recommended that this Permit Application be given Conditional Approval Pending Receipt of Changes (CAPROC) and outstanding items related to the following items.

Rule D – Erosion and Sediment Control

1. Submit the following information per Rule D.4:
 - c. Name, address and phone number of party responsible for maintenance of all erosion and sediment control measures.
 - h. Provide documentation that an NPDES Permit has been applied for and submitted to the Minnesota Pollution Control Agency (MPCA).
 - i. Provide a copy of the SWPPP for the project.

Administrative

2. Send one final, signed full sized plan set to the District, and e-mail a pdf copy to both the District and the District Engineer.
3. The applicant must submit a draft legal document providing satisfactory form and description granting ponding and flowage easements over all onsite ponds, wetlands, and other hydrologic features if the municipality with jurisdiction requires such an easement.
4. The applicant must submit a Draft Declaration for Maintenance of Stormwater Management Facilities acceptable to the District for proposed onsite stormwater management features.
5. The applicant must submit a copy of receipt from County Recorder and signed/notarized legal document(s).
6. The applicant must submit the appropriate cash surety amount of \$3,900 (\$2,400 for stormwater BMPs and \$1,500 for 2± acres of disturbed area) along with an executed escrow agreement

acceptable to the District. If the applicant desires an original copy for their records, then two original signed escrow agreements should be submitted. The applicant must provide the first \$5,000 in the form of a check and has the option of providing the remainder of the surety amount in the form of a check or a Performance Bond or Letter of Credit.

Stipulations: The permit will be issued with the following stipulations as conditions of the permit. By accepting the permit, applicant agrees to these stipulations

1. An as-built survey of all stormwater BMPs (ponds, rain gardens, trenches, swales, etc.) is to be submitted to the District for verification of compliance with the approved plans before return of the surety.

Exhibits:

1. Plan Set (4 pages) including sheets C1-C4, dated 9-8-2014 and received 9-12-2014. Revised plan sheet C3, dated 10-13-2014 and received 10-13-2014.
2. Permit Application, dated 9-10-2014 and received 9-12-2014.
3. Drainage report with project narrative, dated 9-10-2014 and received 9-12-2014.
4. HydroCAD modeling for the 2, 10, and 100-year rainfall events for the existing and proposed site conditions with existing and proposed site drainage maps, dated 9-11-2014 and received 9-12-2014.
5. Plan sheet C3 revised to include soil boring information, undated and received 9-18-2014.
6. Revised HydroCAD modeling for the 2, 10, and 100-year rainfall events for the existing and proposed site conditions with existing and proposed site drainage maps, dated 9-11-2014 and received 10-13-2014.
7. Water quality volume calculations, dated 10-13-2014 and received 10-13-2014.

Findings:

1. **Description** – The project proposes the re-construction of the parking lot to the south of the existing building off of Northco Drive in Fridley. The parking area to the west of the building will be milled and overlaid. The project will cause 2.05± acres of land disturbance and construct/reconstruct 1.18± acres of impervious surface area. Stormwater from the site drains to the northern portion of the site and into city stormsewer, and then southwest to Locke Lake, the Resource of Concern, via Rice Creek. The applicant submitted a \$2,100 application fee, which corresponds to between 1 and 2.5 acres of new impervious surface and <2.5 acres of land disturbance.
2. **Stormwater** – Per Rule C.6(c)(1), the water quality treatment volume required is 4,714± ft³ based on 1.1-inches over the 51,423± ft² of new/reconstructed impervious area, using a TP removal factor of 1 for infiltration. Treatment will be provided by an infiltration basin which is described in the table below.

Proposed BMP Description	Location	Pretreatment	Volume Provided
Infiltration basin (~5,000± ft ²)	Southern edge of site	Grass filter strip	6,721± ft ³

Based on the submitted soil borings, soils on the site are primarily medium grain sands (HSG A soils), and the groundwater table elevation is more than three feet below the bottom of the proposed infiltration basin. Thus, infiltration is considered to be feasible and is proposed by the applicant. Pretreatment will be provided by grassed filter strips. The project is not located within

a DWSMA zone. Using an infiltration rate of 0.8 inches per hour based on the SP soil type, which is consistent with the infiltration rates in Table C5, the infiltration basin will drawdown within the required 48 hours, and the site is in compliance with Rule C.6(c)(1) and C.9(a).

The peak stormwater elevation of the basin is 865.62 and the EOF elevation is 866.3. The low floor elevation of the existing building is 871.4; therefore, the site is in compliance with the freeboard requirements for Low Floor and Low Entry Elevations in Rule C.9(g).

Untreated new and reconstructed impervious area has been minimized to less than 1.8%, and TSS has been treated to the maximum extent practicable.

Drainage Area	2-year (cfs)		10-year (cfs)		100-year (cfs)	
	Existing	Proposed	Existing	Proposed	Existing	Proposed
Project Site	7.59	4.85	14.50	7.48	22.34	10.55
80% of existing		6.07		11.60		17.87

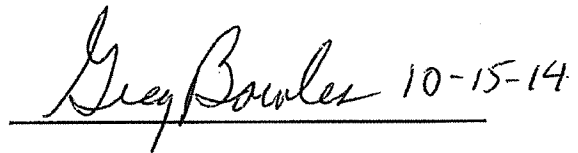
The project is located within the Flood Management Zone. As shown in the above table, the applicant has demonstrated compliance with the rate control requirements of Rule C.7.

3. Wetlands – There are no wetlands on the property.
4. Floodplain – The site is not in a regulatory floodplain.
5. Erosion Control – The proposed erosion control methods include a rock construction entrance, bio logs, inlet protection, rip rap around outlet structures, and all disturbed area will be blanketed or mulched and then seeded. Greater than 1 acre will be disturbed by this project; therefore, an NPDES permit is required for this project. The information listed under the Erosion and Sedimentation Control Recommendations must be submitted. Otherwise, the project complies with RCWD Rule D requirements.
6. Documenting Easements and Maintenance Obligations – Applicant must provide drainage and flowage easements, draft maintenance declaration, and receipt showing recordation once approved.
7. Previous Permit Information – No previous permit information was found for this site.

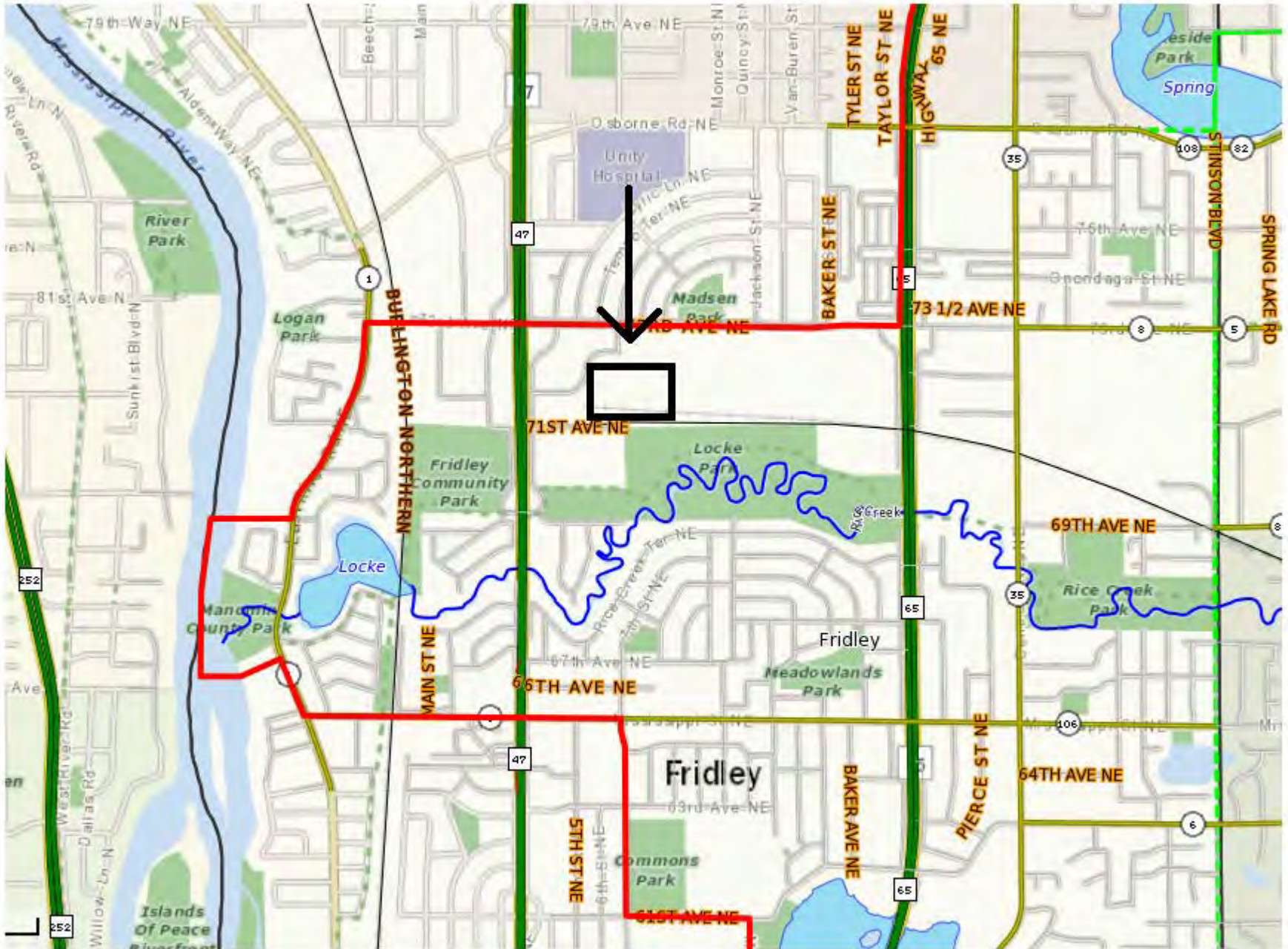
I hereby certify that this plan, specification or report was prepared by me or under my direct supervision and that I am a duly Registered Professional Engineer under the laws of the state of Minnesota.

 10-15-14

Chris Buntjer
MN Reg. No 48745

 10-15-14

Greg Bowles
MN Reg. No 41929



— = Project Boundary



— = Project Boundary — = Infiltration Basin — = Mill & Overlay
— = Direction of Stormwater Flow

**PUBLIC HEARING. ON PROPOSED
WATERSHED MANAGEMENT PLAN
AMENDMENTS.**

Pioneer Press newspaper October 6 & 13, 2014.
Mailed notice to RCWD counties, cities, SWCDs, and metro plan review roster September 11, 2014.
District website & posted notice at office September 11, 2014.
District email noticing September 11, 2014.

**RICE CREEK WATERSHED DISTRICT
NOTICE OF PUBLIC HEARING
ON PROPOSED PLAN AMENDMENTS**

PLEASE TAKE NOTICE that at its regular board meeting on October 22, 2014 at 9:00 a.m. in the Shoreview City Council Chambers, 4600 North Victoria Street, Shoreview, Minnesota, the Board of Managers will receive public comment pursuant to Minnesota Statutes 103B.231 and Minnesota Rules Chapter 8410.0140 on minor amendments to the District's Watershed Management Plan intended primarily to clarify and refine several existing capital improvement projects within the plan. The draft minor plan amendments may be reviewed at www.ricecreek.org or at the District office, 4325 Pheasant Ridge Dr., #611, Blaine, MN 55449. 763-398-3070

ITEMS REQUIRING BOARD ACTION

1. Consider findings and order related to reestablishment and correction of the drainage system records for Anoka County Ditch 31. (Phil Belfiori)

RESOLUTION 2014-32

**RICE CREEK WATERSHED DISTRICT
BOARD OF MANAGERS**

**FINDINGS AND ORDER DIRECTING PROCEEDINGS TO REESTABLISH AND CORRECT DRAINAGE SYSTEM
RECORD FOR ANOKA COUNTY DITCH 31 (Statutes §103E.101, subd. 4a)**

Manager _____ offered the following Resolution and moved its adoption, seconded by
Manager _____:

FINDINGS

1. The Rice Creek Watershed District (RCWD) is the Drainage Authority for Anoka County Ditch (ACD) 31.
2. After thorough investigation of the drainage system record, the Drainage Authority finds that the records establishing the alignment, profile, and right-of-way of ACD 31 are incomplete.
3. The Board of Managers has reviewed a brief history of the system contained in a draft historical review memorandum dated September 11, 2014. Said history is incorporated by reference into this resolution.
4. The RCWD continues to perform minor maintenance on portions of the drainage system and is considering a more comprehensive repair of the system.
5. As part of its analysis of the drainage system, the engineer has identified the existing functional alignment and grade of the system which matches the functional efficiency of the system as designed and established.
6. Statutes Section 103D.335, subd. 8, allows the Board of Managers to “construct, clean, repair, alter, abandon, consolidate, reclaim or change the course or terminus of any public ditch...within the watershed district.”
7. Statutes Section 103E.101, subd. 4a, has been enacted to allow the Drainage Authority to initiate proceedings to reestablish records defining the alignment; cross-section; profile; hydraulic structure locations, materials, dimensions, and elevations; or right-of-way of a drainage system as originally constructed or subsequently improved.

Therefore, the RCWD Board of Managers makes the following:

ORDER

- A. The Board of Managers shall follow the procedures of Statutes Section 103E.101, subd. 4a to reestablish and correct the drainage system record for ACD 31 to reflect the functional alignment, dimension and grade of the system.
- B. The engineer, to the extent not already accomplished in its analysis supporting the historical review memorandum, shall investigate and report findings defining the alignment; cross-section; profile; hydraulic structure locations, materials, dimensions, elevations; and right-of-way of the drainage system.
- C. Drainage Authority staff shall hold an informational meeting on the reestablished and corrected drainage system records for the evening of November 10, 2014 at Columbus City Hall.
- D. Drainage Authority staff, upon completion of the informational meeting and refinement of the engineer’s investigation, shall set a date, time and location for a hearing on the reestablished and corrected drainage system records.
- E. Drainage Authority staff shall give notice of the hearing by mail to the commissioner of natural resources, the executive director of the Board of Water and Soil Resources, and all property owners benefited or damaged by the drainage system and shall give additional notice either in a newspaper of general circulation in the drainage system area or by publication on Drainage Authority’s web-site and in all other ways as required by Board policy.

The question was on the adoption of the Resolution and there were __ yeas and __ nays as follows:

	<u>Yea</u>	<u>Nay</u>	<u>Absent</u>	<u>Abstain</u>
WALLER	<input type="checkbox"/>	<input type="checkbox"/>	<input type="checkbox"/>	<input type="checkbox"/>
HAAKE	<input type="checkbox"/>	<input type="checkbox"/>	<input type="checkbox"/>	<input type="checkbox"/>
OGATA	<input type="checkbox"/>	<input type="checkbox"/>	<input type="checkbox"/>	<input type="checkbox"/>
WAGAMON	<input type="checkbox"/>	<input type="checkbox"/>	<input type="checkbox"/>	<input type="checkbox"/>
PREINER	<input type="checkbox"/>	<input type="checkbox"/>	<input type="checkbox"/>	<input type="checkbox"/>

Upon vote, the Chair declared the Findings and Order _____.

Harley Ogata, Secretary

Dated: October 22, 2014

* * * * *

I, Harley Ogata, Secretary of the Rice Creek Watershed District, do hereby certify that I have compared the above resolution with the original thereof as the same appears of record and on file with the District and find the same to be a true and correct transcript thereof.

IN TESTIMONY WHEREOF, I hereunto set my hand this 22 day of October 2014.

Harley Ogata, Secretary

ITEMS REQUIRING BOARD ACTION

2. Consider findings and order related to reestablishment and correction of the drainage system records for Anoka County Ditch 46. (Phil Belfiori)

RESOLUTION 2014-33

**RICE CREEK WATERSHED DISTRICT
BOARD OF MANAGERS**

**FINDINGS AND ORDER DIRECTING PROCEEDINGS TO REESTABLISH AND CORRECT DRAINAGE SYSTEM
RECORD FOR ANOKA COUNTY DITCH 46 (Statutes §103E.101, subd. 4a)**

Manager _____ offered the following Resolution and moved its adoption, seconded by
Manager _____:

FINDINGS

1. The Rice Creek Watershed District (RCWD) is the Drainage Authority for Anoka County Ditch (ACD) 46.
2. After thorough investigation of the drainage system record, the Drainage Authority finds that the records establishing the alignment, profile, and right-of-way of ACD 46 are incomplete.
3. The Board of Managers has reviewed a brief history of the system contained in a draft historical review memorandum dated March 19, 2009 and addendum dated September 17, 2014. Said history is incorporated by reference into this resolution.
4. The RCWD continues to perform minor maintenance on portions of the drainage system and is considering a more comprehensive repair of the system.
5. As part of its analysis of the drainage system, the engineer has identified the existing functional alignment and grade of the system which matches the functional efficiency of the system as designed and established.
6. Statutes Section 103D.335, subd. 8, allows the Board of Managers to “construct, clean, repair, alter, abandon, consolidate, reclaim or change the course or terminus of any public ditch...within the watershed district.”
7. Statutes Section 103E.101, subd. 4a, has been enacted to allow the Drainage Authority to initiate proceedings to reestablish records defining the alignment; cross-section; profile; hydraulic structure locations, materials, dimensions, and elevations; or right-of-way of a drainage system as originally constructed or subsequently improved.

Therefore, the RCWD Board of Managers makes the following:

ORDER

- A. The Board of Managers shall follow the procedures of Statutes Section 103E.101, subd. 4a to reestablish and correct the drainage system record for ACD 46 to reflect the functional alignment, dimension and grade of the system.
- B. The engineer, to the extent not already accomplished in its analysis supporting the historical review memorandum, shall investigate and report findings defining the alignment; cross-section; profile; hydraulic structure locations, materials, dimensions, elevations; and right-of-way of the drainage system.
- C. Drainage Authority staff shall hold an informational meeting on the reestablished and corrected drainage system records for the evening of November 10, 2014 at Columbus City Hall.
- D. Drainage Authority staff, upon completion of the informational meeting and refinement of the engineer’s investigation, shall set a date, time and location for a hearing on the reestablished and corrected drainage system records.
- E. Drainage Authority staff shall give notice of the hearing by mail to the commissioner of natural resources, the executive director of the Board of Water and Soil Resources, and all property owners benefited or damaged by the drainage system and shall give additional notice either in a newspaper of general circulation in the drainage system area or by publication on Drainage Authority’s web-site and in all other ways as required by Board policy.

The question was on the adoption of the Resolution and there were __ yeas and __ nays as follows:

	<u>Yea</u>	<u>Nay</u>	<u>Absent</u>	<u>Abstain</u>
WALLER	<input type="checkbox"/>	<input type="checkbox"/>	<input type="checkbox"/>	<input type="checkbox"/>
HAAKE	<input type="checkbox"/>	<input type="checkbox"/>	<input type="checkbox"/>	<input type="checkbox"/>
OGATA	<input type="checkbox"/>	<input type="checkbox"/>	<input type="checkbox"/>	<input type="checkbox"/>
WAGAMON	<input type="checkbox"/>	<input type="checkbox"/>	<input type="checkbox"/>	<input type="checkbox"/>
PREINER	<input type="checkbox"/>	<input type="checkbox"/>	<input type="checkbox"/>	<input type="checkbox"/>

Upon vote, the Chair declared the Findings and Order _____.

Harley Ogata, Secretary

Dated: October 22, 2014

* * * * *

I, Harley Ogata, Secretary of the Rice Creek Watershed District, do hereby certify that I have compared the above resolution with the original thereof as the same appears of record and on file with the District and find the same to be a true and correct transcript thereof.

IN TESTIMONY WHEREOF, I hereunto set my hand this 22 day of October 2014.

Harley Ogata, Secretary

ITEMS REQUIRING BOARD ACTION

4. Consider Board policy for submittal of expense/per diem reimbursement claims.
(Phil Belfiori)

MEMORANDUM
Rice Creek Watershed District

To: Board of Managers

Date: October 16, 2014

From: Phil Belfiori

Subject: Consideration of Board Policy regarding deadline for submission of per diem /expenses claims

Background /Discussion

As a follow-up from the consensus discussion at the October 6, 2014 Board workshop, the following language was identified by Managers as proposed Board policy regarding deadline for submission for per diem and expense claims:

“Claims for reimbursement of business related expenses and per diem claims must be submitted by January 15th for expenses incurred for the subsequent year. Any claims submitted after January 15th will not be paid.”

Proposed action: Manager _____ moves to approve the above referenced language as Board policy and incorporate this memo into the RCWD Policy and Procedures Manual.

ITEMS REQUIRING BOARD ACTION

5. Consider Extension of City of Roseville urban stormwater remediation cost-share grant agreement. (Kyle Axtell)

Date: October 13, 2014
To: RCWD Board of Managers
From: Kyle Axtell, Water Resource Specialist
Subject: U12-01b City of Roseville – 2012 PMP and Flood Mitigation Projects (Eldridge)
RCWD Urban Stormwater Remediation Program – Grant Extension Request

BACKGROUND

The City of Roseville entered into an Urban Stormwater Remediation Program cost-share agreement with the RCWD on June 19, 2012 which was to provide \$48,756 toward two proposed stormwater treatment projects. The first of the two was completed in 2013 and the City has been awarded \$22,500 in cost-share funding. The remainder of the cost-share allocation (\$26,256) is meant for the second project, on property currently owned by a church. The City has just recently been able to obtain easement over the project area and is ready to proceed with construction in the spring of 2015. The original cost-share agreement expired on June 19, 2014 and the City has requested an extension through December 31, 2015 to allow for continued funding of this project by the RCWD.

RECOMMENDATION

RCWD staff supports the extension of this grant agreement through December 31, 2015 to facilitate the completion of this water quality treatment project.

Proposed motion: “Manager _____ moves to amend the 2012 Urban Stormwater Remediation Program cost-share agreement between the Rice Creek Watershed District and the City of Roseville by changing its expiration date to December 31, 2015.”

Attachment: Roseville request for extension
Original cost-share agreement
Project concept map

Kyle Axtell

From: Kristine Giga <kristine.giga@ci.roseville.mn.us>
Sent: Friday, October 10, 2014 9:36 AM
To: Kyle Axtell
Cc: Ryan Johnson
Subject: Roseville- Urban storm water remediation cost share

Follow Up Flag: Follow up
Flag Status: Flagged

Categories: Red Category

Kyle,

As you know, we completed the first part of our 2012 cost-share on the Skillman/Fairview project. The second part was intended to occur on Corpus Christi church property, which was delayed due to staff changes at the church and getting them on board with the project. The church has now indicated they are open to this project, however, we are unable to complete this project by the end of 2014. Based on previous conversations, I believe the sunset date on this cost-share was the end of 2014. The city is requesting an extension through 2015. We are moving forward with a project on Evergreen Park across the street, which is scheduled for spring of 2015. It is our intent to incorporate this work into the same contract.

Let me know if you need any additional information. Thanks!

Kristine Giga, P.E.
Civil Engineer
City of Roseville
Phone: 651.792.7048
Fax: 651.792.7040
kristine.giga@ci.roseville.mn.us
www.cityofroseville.com

Confidentiality Statement: The documents accompanying this transmission contain confidential information that is legally privileged. This information is intended only for the use of the individuals or entities listed above. If you are not the intended recipient, you are hereby notified that any disclosure, copying, distribution, or action taken in reliance on the contents of these documents is strictly prohibited. If you have received this information in error, please notify the sender immediately and arrange for the return or destruction of these documents.

**RICE CREEK WATERSHED DISTRICT
COST-SHARE AGREEMENT**

COST-SHARE AGREEMENT between the Rice Creek Watershed District, 4325 Pheasant Ridge Drive NE, Suite 611, Blaine, Minnesota 55449 and the City of Roseville.

RECITALS

- A. City of Roseville (City) intends to construct a project "2012 PMP and Flood Mitigation Projects" ("Project").
- B. The Rice Creek Watershed District (District) has a cost-share program for the improvement and remediation of stormwater management systems in developed urban environments.
- C. In accordance with Program guidelines, the District desires to provide the City cost-share assistance for the Project.

THEREFORE, in consideration of mutual promises set forth herein and other good and valuable consideration, the District and the City agree as follows:

I. CITY RESPONSIBILITIES.

- A. Design Plans and Maintenance Plan. The City will submit (1) soil borings and seasonal high groundwater elevations for each Project site, (2) final Project plans and specifications, and (3) a maintenance plan, to the District for the Administrator's written approval.
- B. Construction and Maintenance. The City, through its own personnel and or contractors, will construct the Project in accordance with the approved Project plans and specifications and maintain it indefinitely in accordance with the approved maintenance plan. In doing so, the City will comply with all applicable laws and regulations and will be responsible for acquiring all permits, approvals and temporary and permanent rights of access or easement.
- C. Completion of Construction. The City staff or consulting engineer will certify the completion of Project construction within 24 months from the effective date of this agreement. The City will submit to the District documentation of Project expenditures and the certification of completion.

II. DISTRICT RESPONSIBILITIES.

- A. Cost-Share Funds. To defray the Project cost to the City, the District will provide the City cost-share assistance in the amount of 50 percent of the Project's eligible costs, as determined by the District, not to exceed \$48,756.00.
- B. Payment Schedule. On District approval of the Project plans and specifications, maintenance plan, certification by the City that it has obtained all necessary permits and approvals, receipt of recorded ponding and flowage easements for each Project site, and receipt of the City's issued notice to proceed, the District will disburse 50 percent of the RCWD Board

approved cost-share amount to the City. On District receipt of the certification of completion and review of such Project documentation as it may require, the District will disburse the remaining RCWD Board approved funds.

C. Contingencies. The District's obligation to provide cost-share funds is contingent on the City's compliance with the terms of this agreement, including but not limited to Project completion in accordance with the District-approved plans and specifications within 24 months. The City will return to the District any cost-share funds already received if this condition is not satisfied.

III. MISCELLANEOUS.

A. Relationship of Parties. Nothing in this agreement creates or establishes a partnership, joint venture or agency relationship between the parties. District review or approval of design plans and specifications, a maintenance plan and any other Project-related documents is solely for the District's own accounting for funds expended. As between the parties, the City is solely responsible for selection of the Project design and the means, method and manner of construction. Nothing in this agreement creates any right in any third party or affects any immunity, defense or liability limitation enjoyed by either party.

B. Employees. The City represents that it has or will secure, at its own expense, all personnel and/or contractors required for the performance of this agreement. No City personnel or contractor will be considered an agent, representative or employee of the District.

C. Liability. The City agrees to hold harmless and indemnify the District, and its managers, staff and representatives, against any claim, expense or damage, including attorney fees, arising from the performance of this agreement.

D. Assignment or Modification. This agreement binds and inures to the benefit of the City and the District, and their respective successors and assigns. Neither party may assign this agreement without the prior written consent of the other. Any modification of the agreement must be in writing and signed by both parties.

E. This agreement is effective as of the date all of the signatures below have been provided.

Dated: 6/19, 2012

City of Roseville

By: Kristine Higa

Its: CIVIL ENGINEER

Dated: 5-23, 2012

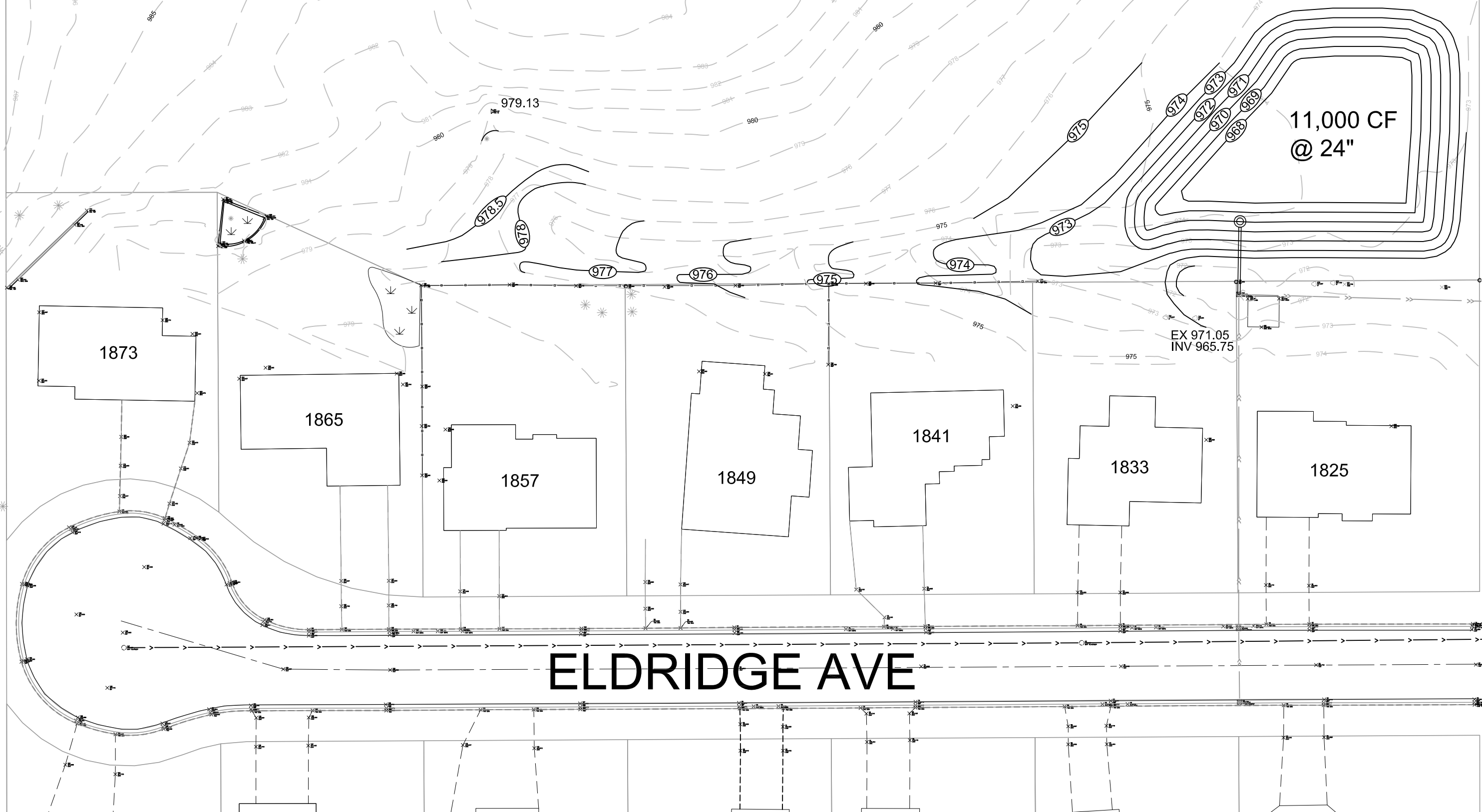
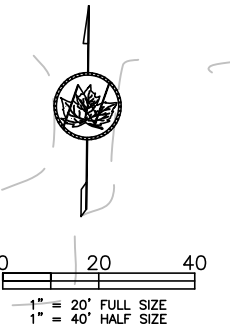
Rice Creek Watershed District

By: Patricia Preiner
Patricia Preiner, President

INFILTRATION/ RATE CONTROL

FIGURE VIII.b

CORPUS CHRISTI



ITEMS REQUIRING BOARD ACTION

6. Consider R14-04: Leslie Maze, raingarden (Bald Eagle Lake) water quality BMP cost-share applications. (Samantha Kreibich)

MEMORANDUM
Rice Creek Watershed District

Date: October 13, 2014
To: RCWD Board of Managers
From: Samantha Kreibich, District Technician
Re: R14-04 Leslie Maze – Raingarden
Water Quality BMP Cost-Share Application

R14-04 Leslie Maze

- Location: 5280 East Bald Eagle Blvd, White Bear Township
- Project Type: Raingarden (Bald Eagle Lake)
- Total Eligible Project Cost: \$5,747.85 (Ramsey SWCD approved contractor estimate)
- RCWD Cost-Share Recommendation: \$1,436.96 (25%)

BACKGROUND

This project proposes installation of a 152 square foot raingarden with sub-surface rock columns to encourage infiltration into the heavy soils present at the site. The raingarden will intercept runoff from approximately 0.20 acres of land (45% impervious) including several homes, the Maze’s driveway and a large yard area. The project area drains to Bald Eagle Lake, which is impaired for nutrients and is designated as a RCWD Tier 1 lake in the 2010 Watershed Management Plan.

This project is proposed in an existing depressional area that collects runoff and has standing water for extended periods of time. Runoff does not discharge to Bald Eagle Lake during most small rain events. Larger rain events will cause a discharge, especially back-to-back rain events when the area is already flooded with runoff. The primary goal is to improve infiltration rates and storage capacity to further reduce the frequency of direct discharge to Bald Eagle Lake and also reduce the draw-down time of the basin to acceptable levels (i.e. less than 72 hours). **Because this project does not have as much water quality benefit as a typical raingarden, the Ramsey SWCD has recommended a lower cost-share rate of up to 25%.**

The Ramsey Conservation District estimated that the total project cost (including a 10% contingency) would be \$5,830.55. The landowner has obtained and submitted two estimates for the project (\$6,288.10 and \$5,747.85) and has submitted an application to encumber up to \$1,436.96 in cost-share funding for this project, not to exceed 25% of eligible project expenses.

RCWD Staff finds that the project has a private drainage issue benefit that is as great as or greater than the public water quality benefit. However, the reduction of direct runoff to Bald Eagle Lake cannot be ignored and the project is in an area where the District is actively promoting the installation of raingardens. The addition of the rock columns is an innovative approach to encouraging infiltration in heavier soils. The Ramsey SWCD’s recommendation of a lower cost-share percentage is appropriate, given the unique circumstances associated with this project.

Based on submitted documents, RCWD staff supports the project and recommends to the RCWD Board of Managers that this project be awarded up to \$1,436.96 in RCWD Water Quality BMP Cost-Share funding, not to exceed 25% of eligible project expenses, in accordance with program guidelines.

This proposal was considered by the RCWD Citizen Advisory Committee at its meeting held on October 1, 2014. The CAC discussed the application and passed a motion recommending that the RCWD Board of Managers approve this project for up to \$1,436.96 in cost-share funding, not to exceed 25% of eligible project expenses. This proposal was also considered at the RCWD Board of Manager's meeting on October 8, 2014. At this time, the Board did not reach consensus of whether to fund the project at 25% or 50%, so decided to table the discussion to the next Board meeting when all Manager's were present.

RECOMMENDATION

RCWD's Citizen Advisory Committee and Staff recommend that the RCWD Board of Managers approve Water Quality BMP Cost-Share funds for Leslie Maze Raingarden project.

Previous motion:

Managers decided to table the discussion until all members were present at the next scheduled meeting, October 22, 2014.

Proposed motion:

Manager _____ moves to approve RCWD Water Quality BMP Cost-Share Contract R14-04 for Leslie Maze raingarden project, up to \$1,436.96, not to exceed 25% of eligible project expenses, in accordance with established program guidelines.

Ramsey Conservation District



1425 Paul Kirkwold Drive
Highway 96 & Hamline Avenue
Arden Hills, MN 55112
Telephone 651-266-7270
Fax 651-266-7276
www.ramseyconservation.org

To: RCWD Advisory Committee
From: Joe Lochner: Conservation Design Specialist
Date: 17-Sept-14
Re: Maze Cost Share Application

Project:

Leslie Maze
5280 East Bald Eagle Blvd
White Bear Lake, MN 55110
Raingarden Installation

Background:

The proposed project is to install one raingarden with three, 18" wide, penetrating rock columns (French Drains) within the basin to capture and infiltrate the runoff from a large turf area, multiple roofs, and a large driveway. The total drainage area is 0.20 acres (8,724 sq-ft) (45% impervious). The raingarden and rock columns will infiltrate water, eliminating the stagnant, standing water currently occurring in the area. The total project size is 152 sq-ft with 12" of ponding depth and it will infiltrate a 0.60" Type II rainfall.

The owner received 2 bids for the project and will hire out the installation.

Funding Request:

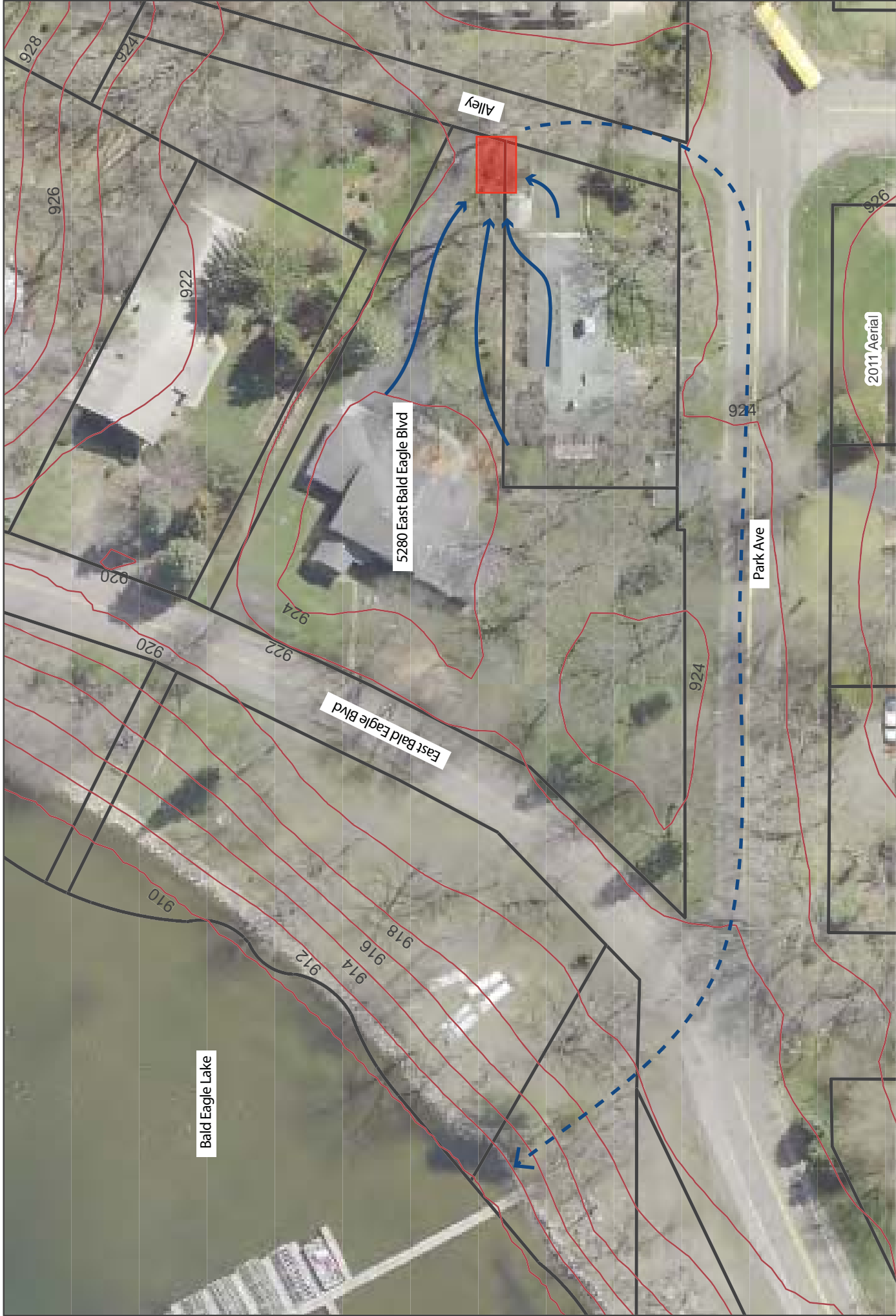
Material & Labor Bid: \$5,747.85
Cost Share Request: \$1,436.96 (25% project cost)

Recommendation:

It is my recommendation that this project be awarded Cost Share in the amount of \$1,436.96, or 25% of the eligible project costs, whichever is less.

The bids are in line with the conservation district's original estimate. The heavy soils will need to be over-excavated in the one raingarden location. In addition, the rock columns will help to infiltrate water through the heavy soils.

The homeowner is very excited about the project.



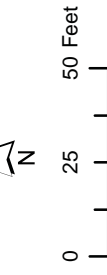
Contours (2' Interval)

Parcel

Project Site

Water Flow to BMP

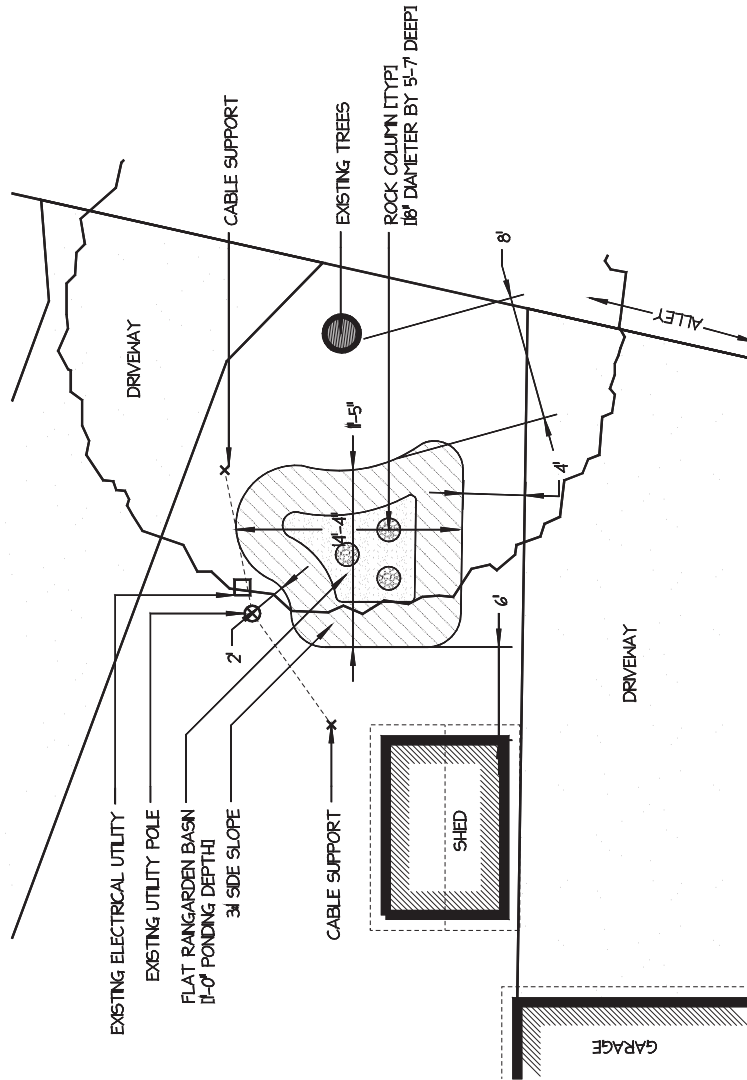
Over Flow from BMP



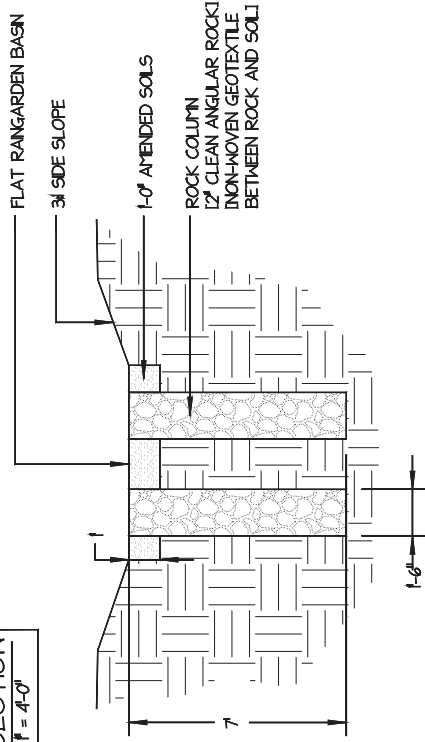
Leslie Maze
 5280 East Bald Eagle Blvd
 White Bear Lake, MN 55110
 leslielucymaze@gmail.com
 651-407-8341

2011 Aerial

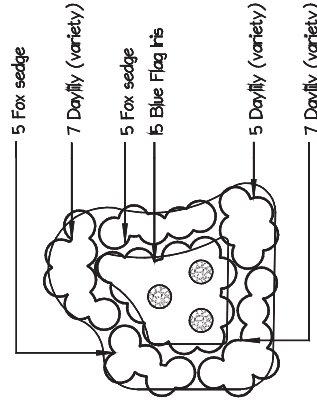
SITE PLAN
SCALE: 1" = 8'-0"



SITE SECTION
SCALE: 1" = 4'-0"



SITE PLANTING
SCALE: 1" = 4'-0"



Qty	Botanical Name	Common Name
	Perennials and Annuals	
0	Carex vulpinoidea	Fox sedge
1	Hemerocallis spp	Daylily (variety)
15	Iris versicolor	Blue Flag Iris

DEVELOPED & PROVIDED BY: RICE CREEK WATERSHED DISTRICT (RCWD) RAINSET CONSERVATION DISTRICT (RCD)		DRAWN: SR [6/10/20M] REVISION: JL [9/9/20M] REVISION REVISION	PAGE: 1 OF 1 DATE: 9-SEPT-14 SCALE: 1" = 8'-0" ORIGINAL: 1" x 17"
--	--	--	--



SITE PLAN
LESLIE MAZE
5280 EAST BALD EAGLE BLVD.
WHITE BEAR LAKE, MN 5540

NOTES:
-CALL GOPHER ONE 48 PRIOR TO DIGGING AT 651-454-0002 TO HAVE UTILITIES MARKED
-CALL THE RCWD (763-398-3072) OR RCD (651-266-7277) WITH ANY QUESTIONS

Ramsey Conservation District MATERIAL & COST ESTIMATE

Leslie Maze
5280 E. Bald Eagle Blvd.
White Bear Lake, MN 55110
Raingarden/Rock Columns

LF: NA
SF: NA
Date: 17-Sep-14

Materials: Raingarden					
Item	Qty	Unit	Unit Cost	Amount	Potential Source
Soil Amendment (75% Sand, 25% Leaf Compost- MNDOT Grade II)	1.5	cu-yd	\$ 23.00	\$ 34.50	NRG, Windscares, MN Mulch & Soil
Twice-Shredded Hardwood Mulch (3" depth)	1.5	cu-yd	\$ 27.00	\$ 40.50	Hedberg, Frador, Local Supplier
Edging (Metal, 1/8" x 6" x 8')	6	each	\$ 30.00	\$ 180.00	Menards, Homedepot, Lowes, etc
Rock Columns (18" by 7" Deep)	3	each	\$ 150.00	\$ 450.00	Contractor
Deliveries (Mulch, Plants, Rock, Soil, etc)	3	job	\$ 50.00	\$ 150.00	Suppliers/Contractors
			Subtotal \$	820.50	

Plants: Raingarden C					
Item	Qty	Unit	Unit Cost	Amount	Potential Source
Native Plant: 4" Pot	25	each	\$ 4.50	\$ 112.50	Native Plant Supplier
			Plants Subtotal \$	112.50	

Labor: Raingarden					
Mobilization	1.00	job	\$ 500.00	\$ 500.00	Landscape/Excavation Contractor
Disposal	1.00	job	\$ 150.00	\$ 150.00	Landscape/Excavation Contractor
Grading (Tracked Equipment Only - no wheeled vehicles in excavation area)	7	hrs	\$ 150.00	\$ 1,050.00	Landscape/Excavation Contractor
Soil Haul-away (create berms before soil haul-away)	7.0	cu-yd	\$ 20.00	\$ 140.00	Landscape/Excavation Contractor
Material Installation (4 person crew/ 10hr day)	1.2	job	\$ 2,200.00	\$ 2,640.00	Landscape/Excavation Contractor
			Subtotal \$	4,480.00	

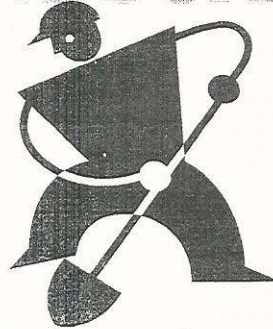
Project Total: Raingarden					
Materials Estimate	\$			\$ 820.50	
Labor Estimate	\$			4,480.00	
Project Estimate	\$			5,300.50	
-:10%	\$			4,770.45	
:+10%	\$			5,830.55	

COLLYARD LANDSCAPING

Mitch Collyard

651-775-7163

www.mclandscaping.com



Job Name Leslie Maze, Betty Tubella
 Address 5280 East Bala Eagle Blvd
White Mt 55110
 Contact 651-407-8341

DESCRIPTION OF WORK	TOTAL COST
RAIN Garden	
RAIN GARDEN EXCAVATIONS & SOILS PER PLAN	\$ 3406.20
Aug three French wells Fill with drain Rock & FABRIC	\$ 745.00
Install 3 weds mulch	\$ 415.10
Install commercial steel Edging	\$ 390.00
Install Plant materials Per Plan	\$ 1331.80
SOD AND IRRIGATION REPAIR will be Bid AFTER CONSTRUCTION OF RAIN GARDEN	
Thankyou for the opportunity to bid your project	
TOTALS	\$ 6288.10

LANDSCAPE CONSTRUCTION CONTRACT

DATE:	9/12/2014
ARCHITECT:	Brandi 651.329.6440



YARDMASTERS LANDSCAPES INC.
 4157 Omaha Avenue North
 Stillwater, MN 55082
 651.439.1750
info@yardmasterslandscapes.com
www.yardmasterslandscapes.com

PROPOSAL SUBMITTED TO:

NAME:	Leslie Maze and Becky Kabella
ADDRESS:	5280 East Bald Eagle Blvd. White Bear Lake, MN 55110
PHONE:	Leslie: 651.407.8341
EMAIL:	Leslielucymaze@gmail.com bkabella@comcast.net

DESCRIPTION OF WORK:

Rain garden and Regrading:	
Plant Materials: per plant list with one year warranty	\$1,086.30
Western Red Cedar Mulch: double shredded	\$525.00
3-River Rock Column 7' deep and 18" wide (2" aggregate with lined fabric)	\$620.00
Steel Edging	\$428.00
Rain Garden Soils: (75% Sand, 25% leaf compost : MN DOT grade II)	\$475.50
Garden Mix:	\$238.05
Removals, Grading, Excavation, Disposals, Mobilization	\$2,375.00
Total for all goods and services:	\$5,747.85
Sod and Irrigation: To be determined	
Options:	
Hardwood Mulch	\$425.00
Commercial Grad Poly Edging	\$264.60

Thank you for the opportunity to bid your project.

Yardmasters Landscapes, Inc. hereby proposes to furnish time and materials as described and specified here in the **Landscape** Construction Contract
 FOR THE SUM OF

Signing of this proposal binds both parties to the prices, work descriptions, conditions and payments agreement as detailed above.

Client Signature _____ Date _____

Salesperson Signature _____ Date _____



Water Quality BMP Cost-Share Program Project Screening Form

Project / Landowner Name: Leslie Maze	
Project Address: 5280 East Bald Eagle Blvd	City: White Bear Lake
County: <input type="checkbox"/> ANOKA <input checked="" type="checkbox"/> RAMSEY <input type="checkbox"/> HENNEPIN <input type="checkbox"/> WASHINGTON	BMP Type(s): Raingarden
Application Date: 9/16/2014	BMP Effective Life: 10
Violation or Permit Requirement: <input type="checkbox"/> YES <input checked="" type="checkbox"/> NO	Reviewer: Joe Lochner

Projects are screened for potential grant eligibility based on the following criteria. (0 = low, 10 = high)

1. a. Is the project tributary to a PCA-listed impaired water (not mercury) or a RCWD Tier I or Tier II waterbody?
 0 (NO) (YES, within subwatershed) 10 (YES, direct connection)
- b. If NO, is the project tributary to a lake, stream, ditch, or DNR-Protected Water Wetland (PWW)?
 (NO) 3 (YES, within subwatershed) 6 (YES, direct connection)

2. **Water Quality Improvement:** Improves and protects water quality through implementation of Best Management Practices (BMPs).

0 1 2 3 4 5 6 7 8 9 10

Comments: Project will improve infiltration of stagnant water on property

3. **Surface Water Rate and Volume Control:** Implements controls to reduce and/or minimize the rate and volume of water that drains off of the property.

0 1 2 3 4 5 6 7 8 9 10

Comments: _____

4. **Erosion and Sediment Control:** Implements controls that minimize erosion and/or sedimentation to downstream waters.

0 1 2 3 4 5 6 7 8 9 10

Comments: _____

5. **Wildlife Habitat Improvement:** Creates or improves wildlife habitat through native plantings or other restoration efforts.

0 1 2 3 4 5 6 7 8 9 10

Comments: _____

6. **Public Outreach:** Willingness of applicant to allow signage, tours and site visits. Publically visible site. Diversity of practices.

0 1 2 3 4 5 6 7 8 9 10

Comments: _____

Total Score: 30

Minimum Eligibility = 30

ITEMS REQUIRING BOARD ACTION

7. Consider League of Minnesota Cities liability coverage waiver form. (Phil Belfiori)

SECTION I: LIABILITY COVERAGE WAIVER FORM

Cities obtaining liability coverage from the League of Minnesota Cities Insurance Trust must decide whether or not to waive the statutory tort liability limits to the extent of the coverage purchased. The decision to waive or not to waive the statutory limits has the following effects:

- o *If the city does not waive the statutory tort limits*, an individual claimant would be able to recover no more than \$500,000. on any claim to which the statutory tort limits apply. The total which all claimants would be able to recover for a single occurrence to which the statutory tort limits apply would be limited to \$1,500,000. These statutory tort limits would apply regardless of whether or not the city purchases the optional excess liability coverage.
- o *If the city waives the statutory tort limits and does not purchase excess liability coverage*, a single claimant could potentially recover up to \$1,500,000. on a single occurrence. The total which all claimants would be able to recover for a single occurrence to which the statutory tort limits apply would also be limited to \$1,500,000., regardless of the number of claimants.
- o *If the city waives the statutory tort limits and purchases excess liability coverage*, a single claimant could potentially recover an amount up to the limit of the coverage purchased. The total which all claimants would be able to recover for a single occurrence to which the statutory tort limits apply would also be limited to the amount of coverage purchased, regardless of the number of claimants.

Claims to which the statutory municipal tort limits do not apply are not affected by this decision.

This decision must be made by the city council. **Cities purchasing coverage must complete and return this form to LMCIT before the effective date of the coverage.** For further information, contact LMCIT. You may also wish to discuss these issues with your city attorney.

_____ accepts liability coverage limits of \$ _____ from the League of Minnesota Cities Insurance Trust (LMCIT).

Check one:

- The city **DOES NOT WAIVE** the monetary limits on municipal tort liability established by Minnesota Statutes 466.04.
- The city **WAIVES** the monetary limits on tort liability established by Minnesota Statutes 466.04, to the extent of the limits of the liability coverage obtained from LMCIT.

Date of city council meeting _____

Signature _____ Position _____

Return this completed form to LMCIT, 145 University Ave. W., St. Paul, MN. 55103-2044

ITEMS REQUIRING BOARD ACTION

8. Consider check register dated 10/22/2014, in the amount of \$288,644.10 prepared by Redpath and Company.

Rice Creek Watershed District
Check Register
October 9, 2014 - October 22, 2014
To Be Approved at the October 22, 2014 Board Meeting

Check #	Date	Payee	Description	Amount	
19889	10/13/14	Elizabeth Hosch	Employee Reimbursement	\$769.26	Issued 10/13/14
19890	10/22/14	Renie Abraham	Construction-BMP Cost Share	764.88	
19891	10/22/14	Kyle Axtell	Employee Reimbursement	12.32	
19892	10/22/14	Philip Belfiori	Employee Reimbursement	306.00	
19893	10/22/14	Jessica Bromelkamp	Employee Reimbursement	541.31	
19894	10/22/14	City of Shoreview	Training & Education	100.00	
19895	10/22/14	Dynamex	Postage	38.94	
19896	10/22/14	Emmons & Olivier Resources, Inc.	September, 2014 Engineering	324.39	
19897	10/22/14	HealthPartners	Employee Benefits	7,483.09	
19898	10/22/14	Holiday Credit	Vehicle Expense	592.63	
19899	10/22/14	Home Depot	Supplies-Field	44.99	
19900	10/22/14	Houston Engineering, Inc.	September, 2014 Engineering	120,094.09	
19901	10/22/14	Instrumental Research, Inc.	Lab Expense	1,368.00	
19902	10/22/14	Integra Telecom, Inc.	Telecommunications	99.96	
19903	10/22/14	Integra Telecom, Inc.	Telecommunications	523.59	
19904	10/22/14	Amy Juffer	Construction-BMP Cost Share	1,239.74	
19905	10/22/14	Matthew J. Kocian	Employee Reimbursement	244.24	
19906	10/22/14	Samantha Kreibich	Employee Reimbursement	23.52	
19907	10/22/14	Lawn & Landscape Gardens	Construction-BMP Cost Share	731.00	
19908	10/22/14	Peter M. Leonard	Employee Reimbursement	180.64	
19909	10/22/14	Cheryl & Jeff Magnuson	Construction-BMP Cost Share	2,427.30	
19910	10/22/14	MEPT Blaine LLC	Rent	6,160.81	
19911	10/22/14	Metro Blooms	Meeting Supplies	132.03	
19912	10/22/14	MN Helicopters, Inc.	Contracted Services	1,417.50	
19913	10/22/14	Catherine A. Nester	Employee Reimbursement	3.36	
19914	10/22/14	Noah & Associates, Inc.	Contracted Services	750.00	
19915	10/22/14	Harley Ogata	Manager Per Diem/Expense	243.63	
19916	10/22/14	Paulina & Paul Li	Construction-BMP Cost Share	5,000.00	
19917	10/22/14	Premium Waters, Inc.	Meeting Supplies	108.15	
19918	10/22/14	Press Publications	Legal Notices	88.12	
19919	10/22/14	Patricia Preiner	Manager Per Diem/Expense	361.05	
19920	10/22/14	Print Central	Legal Notices/Training & Education	267.82	
19921	10/22/14	Ramsey County	Professional Services	119.60	
19922	10/22/14	Redpath & Company, LTD	September, 2014 Accounting	2,247.32	
19923	10/22/14	Becky Rice	Meeting Supplies	53.55	
19924	10/22/14	Rinke Noonan	September, 2014 Legal Fees	3,573.50	
19925	10/22/14	R & R Leasing, Inc.	Contracted Services	16,702.84	
19926	10/22/14	Scandia Trucking & Excavating, Inc.	Contracted Services	21,275.00	
19927	10/22/14	Doug Setley	Professional Services	90.00	
19928	10/22/14	Smith Partners	September, 2014 Legal Fees	6,590.94	
19929	10/22/14	Solbrekk, Inc.	Professional Services	67.50	
19930	10/22/14	Theresa Stasica	Employee Reimbursement	17.92	
19931	10/22/14	Staples Advantage	Office Supplies	255.31	
19932	10/22/14	Pioneer Press	Legal Notices/Recruitment	1,542.80	

Rice Creek Watershed District
Check Register
October 9, 2014 - October 22, 2014
To Be Approved at the October 22, 2014 Board Meeting

Check #	Date	Payee	Description	Amount
19933	10/22/14	Timesavers, Inc.	Professional Services	303.75
19934	10/22/14	Nicholas A. Tomczik	Employee Reimbursement	41.74
19935	10/22/14	University of Minnesota	Training & Education	140.00
19936	10/22/14	U.S. Bancorp Equipment Finance, Inc.	Equipment-Lease	380.61
19937	10/22/14	Verizon Wireless	Cell Phone Expense	557.37
19938	10/22/14	Steven P. Wagamon	Manager Per Diem/Expense	159.80
19939	10/22/14	Washington Conservation District	Contracted/Professional Services	8,406.00
19940	10/22/14	WSB & Associates	September, 2014 Engineering	2,631.00
10758	10/22/14	Marcel Eibensteiner	Surety Release - #97-113	7,000.00
10759	10/22/14	Equinox Development, LLC	Surety Release - #05-004	3,500.00
10760	10/22/14	Frattalone Companies	Surety Release - #14-070	1,000.00
10761	10/22/14	Horton, Inc.	Surety Release - #13-083	6,100.00
10762	10/22/14	Lakeland Construction Finance, LLC	Surety Release - #02-084	9,000.00
10763	10/22/14	Cheryl & Jeff Magnuson	Surety Release - #14-042	1,000.00
10764	10/22/14	Luke Petrowske	Surety Release - #14-003	1,000.00
10765	10/22/14	POA-Scherer, LLC	Surety Release - #04-071	2,000.00
10766	10/22/14	Positive Companies, Inc.	Surety Release - #04-071	1,500.00
10767	10/22/14	Roseville Hospitality, LLC	Surety Release - #13-078	1,500.00
10768	10/22/14	Zaczkowski Trucking Service	Surety Release - #13-050	1,500.00
Dir.Dep.	10/31/14	October 31, 2014 Payroll	October 31, 2014 Payroll	20,264.59
Dir.Dep.	10/31/14	John Waller	Manager Per Diem/Expense	753.28
EFT	10/22/14	Card Services - Anchor Bank	October, 2014 Credit Card	2,253.77
EFT	10/22/14	Internal Revenue Service	10/22 Federal Withholding	103.28
EFT	10/31/14	Internal Revenue Service	10/31 Federal Withholding	6,522.40
EFT	10/31/14	Minnesota Dept. of Revenue	10/31 State Withholding	1,082.56
EFT	10/31/14	MN Unemployment	3rd Quarter Unemployment	98.00
EFT	10/31/14	ING Retirement Services	10/31 Deferred Compensation	635.00
EFT	10/31/14	ING Retirement Services	10/31 Health Care Savings Plan	604.11
EFT	10/31/14	PERA	10/31 PERA	3,628.20
Total				<u><u>\$288,644.10</u></u>

Rice Creek Watershed District Budget Status Report
Administrative & Program Budget
Fiscal Year 2014
10/31/14

Combined General & Administrative	Budget Item	Account Number	Original Budget	Budget Adjustment	Current Month Expenses	Year-to-Date Expenses	Current Budget Balance	Percent of Budget
Manager	Per diems	4000	\$15,000.00	-	\$975.00	\$13,125.00	\$1,875.00	87.50%
	Manager expenses	4010	4,500.00	-	221.76	3,307.87	1,192.13	73.51%
Committees	Committee/Bd Mtg. Exp.	4800	-	-	-	-	-	-
Employees	Staff salary/taxes/benefits	4100-4140	143,096.00	-	12,545.71	122,168.63	20,927.37	85.38%
	District training & education	4265	2,100.00	-	345.00	1,480.00	620.00	70.48%
	Employee expenses	4320-4321	1,761.00	-	143.92	1,083.46	677.54	61.53%
Administration/ Office	Office/Meeting/Software	4200-4205	2,930.00	-	203.03	2,460.22	469.78	83.97%
	Printing	4208	594.00	-	0.00	197.56	396.44	33.26%
	Rent/Office	4210	18,080.00	-	1,378.79	14,866.41	3,213.59	82.23%
	Telecommunications	4240	3,280.00	-	219.26	2,206.65	1,073.35	67.28%
	Dues	4245	5,150.00	-	-	5,287.00	(137.00)	102.66%
	Publications	4250	210.00	-	-	243.22	(33.22)	115.82%
	Insurance	4270	3,769.00	-	-	4,257.54	(488.54)	112.96%
	Postage	4280	1,260.00	-	-	1,664.08	(404.08)	132.07%
	Legal Notices	4290	2,000.00	-	267.80	2,666.84	(666.84)	133.34%
	Office Equipment/Lease	4635	1,697.00	-	85.18	1,436.24	260.76	84.63%
	Bank Charges	4910	-	-	-	-	-	0.00%
	Sub-Total-Administration:		205,427.00	-	16,385.45	176,450.72	28,976.28	85.89%
Consultants	Auditor/Accounting	4330	54,178.00	-	2,247.32	49,757.33	4,420.67	91.84%
	Legal	4410	26,250.00	-	1,521.02	17,993.24	8,256.76	68.55%
	Consultants/Professional Serv.	4420	8,700.00	-	393.75	5,246.39	3,453.61	60.30%
	Engineering-General	4500	56,500.00	-	3,250.00	31,078.50	25,421.50	55.01%
	Sub-Total-Consultants:		145,628.00	-	7,412.09	104,075.46	41,552.54	71.47%
TOTAL			\$351,055.00	-	23,797.54	280,526.18	\$70,528.82	79.91%

Rice Creek Watershed District Budget Status Report
Administrative & Program Budget
Fiscal Year 2014
10/31/14

Revenue/Expenditures By Project	2014 Budget	2014 Year to date Revenue	2014 Current Month Expense	2014 Year to date Expense	Current Budget Balance	Percent of Budget
10 - General and Administrative	\$351,055.00	\$283,080.77	\$23,797.54	\$280,526.18	\$70,528.82	79.91%
30 - Environmental Education	120,524.00	99,885.44	7,141.15	81,693.19	38,830.81	67.78%
35 - Information Management	107,748.00	87,395.14	4,482.76	64,578.02	43,169.98	59.93%
60 - Restoration Projects	1,736,940.00	1,453,672.63	63,747.25	485,247.35	1,251,692.65	27.94%
70 - Regulatory	794,091.00	652,616.58	65,324.30	661,557.86	132,533.14	83.31%
80 - Ditch & Creek Maintenance	639,946.00	514,483.38	71,724.40	435,317.45	204,628.55	68.02%
90 - Lake & Stream Management	1,491,183.00	1,193,537.89	45,911.69	1,094,500.84	396,682.16	73.40%
95 - District Facilities	155,000.00	124,069.26	2,319.32	28,258.33	126,741.67	18.23%
Total District Revenue/Expenditures	\$5,396,487.00	\$4,408,741.09	\$284,448.41	\$3,131,679.22	\$2,264,807.78	58.03%

Current Fund Balances:

Fund:	Fund Balance @ 12/31/2013	7/1/2014 Fund Balance Transfers	Approved Fund Balance 7/31/2014	2014 Year to date Revenue	2014 Current Month Expense	2014 Year to date Expense	Fund Balance @ 10/31/2014
10 - General Fund	\$128,718.07	-	128,718.07	\$283,080.77	\$23,797.54	\$280,526.18	\$131,272.66
30 - Environmental Education	76,967.00	-	76,967.00	99,885.44	7,141.15	81,693.19	95,159.25
35 - Information Management	63,860.00	-	63,860.00	87,395.14	4,482.76	64,578.02	86,677.12
60 - Restoration Projects	1,563,935.00	456,644.00	2,020,579.00	1,453,672.63	63,747.25	485,247.35	2,989,004.28
70 - Regulatory	504,226.00	-	504,226.00	652,616.58	65,324.30	661,557.86	495,284.72
80 - Ditch & Creek Maintenance	457,885.00	-	457,885.00	514,483.38	71,724.40	435,317.45	537,050.93
90 - Lake & Stream Management	2,393,940.00	(456,644.00)	1,937,296.00	1,193,537.89	45,911.69	1,094,500.84	2,036,333.05
95 - District Facilities	424,126.00	-	424,126.00	124,069.26	2,319.32	28,258.33	519,936.93
Total District Fund Balance:	\$5,613,657.07	-	\$5,613,657.07	\$4,408,741.09	\$284,448.41	\$3,131,679.22	\$6,890,718.94

Rice Creek Watershed District
Statement of Revenue and Expenditures - General Fund - 10
For the One Month and Ten Months Ending October 31, 2014
See Accountant's Compilation Report

	Current Month	Year to Date	Annual Budget	Over/(Under) Budget
<u>GENERAL FUND</u>				
Revenues				
General Property Tax	\$ 26,876.08	\$ 274,376.50	322,513.00	(48,136.50)
Interest Revenue	0.00	1,559.72	566.00	993.72
Investment Interest-Surety	0.00	6,328.75	6,633.00	(304.25)
Miscellaneous Revenue	0.00	815.80	0.00	815.80
Total Revenues	26,876.08	283,080.77	329,712.00	(46,631.23)
Expenses				
Manager Per Diem	975.00	13,125.00	15,000.00	(1,875.00)
Manager Expense	0.00	499.02	2,000.00	(1,500.98)
Manager Travel	221.76	2,808.85	2,500.00	308.85
Wages-General	9,011.42	88,018.70	104,499.00	(16,480.30)
Benefits	1,417.54	13,250.72	14,676.00	(1,425.28)
PERA Expense	653.33	6,381.36	7,576.00	(1,194.64)
HSA Contributions	604.11	5,985.64	6,351.00	(365.36)
Payroll Taxes	761.31	7,858.21	7,994.00	(135.79)
Payroll Taxes-Unemployment	98.00	674.00	2,000.00	(1,326.00)
Office Supplies	115.97	1,729.13	1,680.00	49.13
Supplies-Field	0.00	0.00	250.00	(250.00)
Meeting Supplies/Expense	87.06	731.09	1,000.00	(268.91)
Printing	0.00	197.56	594.00	(396.44)
Rent	1,378.79	14,866.41	18,080.00	(3,213.59)
Telecommunications	219.26	2,206.65	3,280.00	(1,073.35)
Dues	0.00	5,287.00	5,150.00	137.00
Publications	0.00	243.22	210.00	33.22
Training & Education	345.00	1,480.00	2,100.00	(620.00)
Insurance & Bonds	0.00	4,257.54	3,769.00	488.54
Postage	0.00	1,664.08	1,260.00	404.08
Legal Notices-General	267.80	2,666.84	2,000.00	666.84
Staff Travel	143.92	1,083.46	1,761.00	(677.54)
Audit & Accounting	2,247.32	49,757.33	54,178.00	(4,420.67)
Professional Services-General	393.75	5,246.39	8,700.00	(3,453.61)
Legal Fees-General	1,521.02	17,993.24	26,250.00	(8,256.76)
Engineering-General	3,250.00	31,078.50	56,500.00	(25,421.50)
Equipment Lease	85.18	1,436.24	1,697.00	(260.76)
Total Expenses	23,797.54	280,526.18	351,055.00	(70,528.82)
Total Revenues Over/(Under) Expenditures - General Fund	3,078.54	2,554.59	(21,343.00)	23,897.59
Total Revenue Over/(Under) Expenditure	\$ 3,078.54	2,554.59	(21,343.00)	23,897.59

Rice Creek Watershed District
Statement of Revenue and Expenditures - Environmental Education - 30
For the One Month and Ten Months Ending October 31, 2014
See Accountant's Compilation Report

	Current Month	Year to Date	Annual Budget	Over/(Under) Budget
<u>ENVIRONMENTAL EDUCATION MANAGEMENT - 30-00</u>				
Revenues				
General Property Tax	\$ 6,884.83	\$ 70,229.35	82,618.00	(12,388.65)
Interest Income	0.00	534.61	194.00	340.61
Miscellaneous Income	0.00	370.20	0.00	370.20
Total Revenues	6,884.83	71,134.16	82,812.00	(11,677.84)
Expenses				
Wages-Environmental	4,951.32	42,393.20	59,314.00	(16,920.80)
Benefits-Environmental	277.24	3,723.28	8,317.00	(4,593.72)
PERA-Environmental	358.98	3,029.48	4,300.00	(1,270.52)
Payroll Taxes-Environmental	311.67	2,706.59	4,537.00	(1,830.41)
Office Supplies	23.97	225.95	720.00	(494.05)
Printing	0.00	182.02	255.00	(72.98)
Rent	578.50	6,237.52	7,748.00	(1,510.48)
Telecommunications	58.56	591.44	1,406.00	(814.56)
Publications	0.00	0.00	90.00	(90.00)
Training & Education	85.00	160.00	900.00	(740.00)
Insurance and Bonds	0.00	1,744.38	1,615.00	129.38
Postage	0.00	657.30	540.00	117.30
Staff Travel	41.31	283.34	755.00	(471.66)
Contracted Services	150.00	150.00	0.00	150.00
Legal Fees	0.00	0.00	500.00	(500.00)
Engineering-Environ.	0.00	0.00	1,000.00	(1,000.00)
Equipment-Environmental	0.00	0.00	500.00	(500.00)
Equipment-Lease	35.74	602.61	727.00	(124.39)
Total Expenses	6,872.29	62,687.11	93,224.00	(30,536.89)
Total Revenues Over/(Under)				
Expenditures - Environmental Education	12.54	8,447.05	(10,412.00)	18,859.05
<u>WATER EDUCATION & OUTREACH - 30-02</u>				
Revenues				
General Property Tax	1,325.42	13,520.04	15,905.00	(2,384.96)
Income-Video Production	0.00	0.00	90.00	(90.00)
Total Revenues	1,325.42	13,520.04	15,995.00	(2,474.96)
Expenses				
Meeting Supplies/Expense	0.00	8.98	1,585.00	(1,576.02)
Printing	0.00	177.83	2,000.00	(1,822.17)
Training & Education	83.28	5,931.34	7,225.00	(1,293.66)
Public Education & Information	0.00	32.14	0.00	32.14
Contracted Services	0.00	1,112.50	7,190.00	(6,077.50)
Engineering	0.00	88.00	0.00	88.00
Total expenses	83.28	7,350.79	18,000.00	(10,649.21)
Total Revenues Over/(Under)				
Expenditures - Water Educ. & Outreach	1,242.14	6,169.25	(2,005.00)	8,174.25

Rice Creek Watershed District
Statement of Revenue and Expenditures - Environmental Education - 30
For the One Month and Ten Months Ending October 31, 2014
See Accountant's Compilation Report

	Current Month	Year to Date	Annual Budget	Over/(Under) Budget
<u>BLUE THUMB - 30-03</u>				
Revenues				
Income-Blue Thumb Media	0.00	5,066.24	7,925.00	(2,858.76)
Income-Blue Thumb Membership	0.00	10,145.00	6,060.00	4,085.00
Income-Blue Thumb Training	0.00	0.00	1,212.00	(1,212.00)
Blue Thumb-Display User Fee	0.00	20.00	0.00	20.00
	<hr/>	<hr/>	<hr/>	<hr/>
Total Revenues	0.00	15,231.24	15,197.00	34.24
Expenses				
Meeting Supplies	185.58	360.84	500.00	(139.16)
Printing	0.00	5,151.53	500.00	4,651.53
Training & Education	0.00	7.45	0.00	7.45
Public Education & Information	0.00	398.52	1,000.00	(601.48)
Postage	0.00	211.95	0.00	211.95
Professional Services	0.00	100.00	0.00	100.00
Contracted Services	0.00	4,000.00	7,300.00	(3,300.00)
Legal Feese	0.00	1,007.00	0.00	1,007.00
Engineering	0.00	418.00	0.00	418.00
	<hr/>	<hr/>	<hr/>	<hr/>
Total expenses	185.58	11,655.29	9,300.00	2,355.29
Total Revenues Over/(Under)				
Expenditures - Blue Thumb	(185.58)	3,575.95	5,897.00	(2,321.05)
	<hr/>	<hr/>	<hr/>	<hr/>
Total Revenue Over/(Under) Expenditure	\$ 1,069.10	\$ 18,192.25	(6,520.00)	24,712.25
	<hr/> <hr/>	<hr/> <hr/>	<hr/> <hr/>	<hr/> <hr/>

Rice Creek Watershed District
Statement of Revenue and Expenditures - Information & Technology Management - 35
For the One Month and Ten Months Ending October 31, 2014
See Accountant's Compilation Report

	Current Month	Year to Date	Annual Budget	Over/(Under) Budget
<u>INFORMATION MANAGEMENT - 35-00</u>				
Revenues				
General Property Tax	\$ 5,273.83	\$ 53,796.20	63,286.00	(9,489.80)
Interest Revenue	0.00	479.49	174.00	305.49
Miscellaneous Income	0.00	1,148.25	0.00	1,148.25
Total Revenues	5,273.83	55,423.94	63,460.00	(8,036.06)
Expenses				
Wages-Information Mgmt.	2,214.80	21,704.95	25,956.00	(4,251.05)
Benefits-Information Mgmt.	70.75	662.36	1,109.00	(446.64)
PERA-Information Mgmt.	160.58	1,687.80	1,882.00	(194.20)
Payroll Taxes-Information Mgmt	167.84	1,677.15	1,986.00	(308.85)
Office Supplies	3.04	28.64	80.00	(51.36)
Computer Software	0.00	1,108.66	1,560.00	(451.34)
Printing	0.00	7.62	29.00	(21.38)
Rent	73.31	790.44	861.00	(70.56)
Telecommunications	7.42	74.96	155.00	(80.04)
Publications	0.00	0.00	10.00	(10.00)
Training & Education	0.00	91.95	100.00	(8.05)
Insurance and Bonds	0.00	221.07	179.00	42.07
Postage	0.00	83.30	60.00	23.30
Staff Travel	0.00	0.00	84.00	(84.00)
Professional Services	130.49	9,967.29	16,566.00	(6,598.71)
Engineering	0.00	0.00	2,000.00	(2,000.00)
Equipment-Computer	0.00	5,743.97	14,950.00	(9,206.03)
Equipment Lease	4.53	76.36	81.00	(4.64)
Total Expenses	2,832.76	43,926.52	67,648.00	(23,721.48)
Total Revenues Over/(Under)				
Expenditures - Information Management	2,441.07	11,497.42	(4,188.00)	15,685.42
<u>PERMITTING MAPPER APPLICATION HOSTING - 35-05</u>				
Revenues				
General Property Tax	3,134.25	31,971.20	37,611.00	(5,639.80)
Total Revenues	3,134.25	31,971.20	37,611.00	(5,639.80)
Expenses				
Engineering	1,650.00	20,651.50	40,100.00	(19,448.50)
Total expenses	1,650.00	20,651.50	40,100.00	(19,448.50)
Total Revenues Over/(Under)				
Expenditures - Permitting Mapper	1,484.25	11,319.70	(2,489.00)	13,808.70
Total Revenue Over/(Under) Expenditure	\$ 3,925.32	\$ 22,817.12	(6,677.00)	29,494.12

Rice Creek Watershed District
Statement of Revenue and Expenditures - Restoration Projects - 60
For the One Month and Ten Months Ending October 31, 2014
See Accountant's Compilation Report

	Current Month	Year to Date	Annual Budget	Over/(Under) Budget
<u>RESTORATION PROJECT MANAGEMENT - 60-00</u>				
Revenues				
General Property Tax	\$ 6,532.17	\$ 66,631.96	78,386.00	(11,754.04)
Interest Revenue	0.00	7,715.92	2,800.00	4,915.92
Miscellaneous Income	0.00	0.00	3,067.00	(3,067.00)
Total Revenues	6,532.17	74,347.88	84,253.00	(9,905.12)
Expenses				
Wages-Restoration Projects	6,342.32	51,526.29	53,146.00	(1,619.71)
Benefits-Restoration Projects	314.14	3,099.44	6,259.00	(3,159.56)
PERA-Restoration Projects	459.82	3,700.60	3,853.00	(152.40)
Payroll Taxes-Restoration	461.47	3,752.68	4,066.00	(313.32)
Office Supplies	17.26	222.66	640.00	(417.34)
Printing	0.00	97.66	226.00	(128.34)
Rent	416.47	4,490.49	6,887.00	(2,396.51)
Telecommunications	103.07	1,034.98	1,250.00	(215.02)
Publications	91.00	91.00	80.00	11.00
Training & Education	245.00	739.41	800.00	(60.59)
Insurance and Bonds	0.00	1,400.00	1,436.00	(36.00)
Postage	0.00	473.20	480.00	(6.80)
Legal Notices	0.00	1,566.00	0.00	1,566.00
Staff Travel	0.00	0.00	671.00	(671.00)
Professional Services	0.00	0.00	500.00	(500.00)
Contracted Services	150.00	150.00	0.00	150.00
Legal Fees	629.50	669.50	1,000.00	(330.50)
Engineering	0.00	0.00	7,500.00	(7,500.00)
Equipment Lease	25.73	433.83	646.00	(212.17)
Total Expenses	9,255.78	73,447.74	89,440.00	(15,992.26)
Total Revenues Over/(Under)				
Expenditures - Restoration Management	(2,723.61)	900.14	(5,187.00)	6,087.14
<u>RICE CREEK MEANDER RESTORATION - 60-03</u>				
Revenues				
General Property Tax	25,402.25	259,117.92	304,827.00	(45,709.08)
Total Revenues	25,402.25	259,117.92	304,827.00	(45,709.08)
Expenses				
Contracted Services	0.00	0.00	50,000.00	(50,000.00)
Legal Fees	494.00	1,472.59	10,000.00	(8,527.41)
Engineering-Rice Creek Meander	0.00	827.75	265,000.00	(264,172.25)
Operating Transfer Out	0.00	294,095.00	0.00	294,095.00
Total expenses	494.00	296,395.34	325,000.00	(28,604.66)
Total Revenues Over/(Under)				
Expenditures - Rice Creek Meander	24,908.25	(37,277.42)	(20,173.00)	(17,104.42)

Rice Creek Watershed District
Statement of Revenue and Expenditures - Restoration Projects - 60
For the One Month and Ten Months Ending October 31, 2014
See Accountant's Compilation Report

	Current Month	Year to Date	Annual Budget	Over/(Under) Budget
<u>STORMWATER REMEDIATION - 60-15</u>				
Revenues				
Total Revenues	0.00	0.00	0.00	0.00
Expenses				
Legal Notices	0.00	576.65	0.00	576.65
Stormwater-Construction	0.00	1,870.35	0.00	1,870.35
Total expenses	0.00	2,447.00	0.00	2,447.00
Total Revenues Over/(Under)				
Expenditures - Stormwater Redmediatio	0.00	(2,447.00)	0.00	(2,447.00)
 <u>COLUMBUS RMP - 60-17</u>				
Revenues				
General Property Tax	1,954.00	19,931.95	23,448.00	(3,516.05)
Total Revenues	1,954.00	19,931.95	23,448.00	(3,516.05)
Expenses				
Legal Fees	0.00	0.00	5,000.00	(5,000.00)
Engineering	3,616.00	13,701.26	20,000.00	(6,298.74)
Total expenses	3,616.00	13,701.26	25,000.00	(11,298.74)
Total Revenues Over/(Under)				
Expenditures - Columbus RMP	(1,662.00)	6,230.69	(1,552.00)	7,782.69
 <u>JD4 RMP IMPLEMENTATION - 60-18</u>				
Revenues				
General Property Tax	10,747.17	109,627.45	128,966.00	(19,338.55)
Total Revenues	10,747.17	109,627.45	128,966.00	(19,338.55)
Expenses				
Supplies-Field	0.00	0.00	300.00	(300.00)
Printing	0.00	42.85	0.00	42.85
Telecommunications	18.79	187.90	200.00	(12.10)
Postage	0.00	0.00	100.00	(100.00)
Legal Notices	0.00	0.00	1,000.00	(1,000.00)
Professional Services	0.00	0.00	30,000.00	(30,000.00)
Contracted Services-JD4 RMP	0.00	28,451.31	50,000.00	(21,548.69)
Legal Fees	105.00	507.50	10,000.00	(9,492.50)
Engineering	4,669.25	27,611.59	45,900.00	(18,288.41)
Total expenses	4,793.04	56,801.15	137,500.00	(80,698.85)
Total Revenues Over/(Under)				
Expenditures - JD4 RMP Implement.	5,954.13	52,826.30	(8,534.00)	61,360.30

Rice Creek Watershed District
Statement of Revenue and Expenditures - Restoration Projects - 60
For the One Month and Ten Months Ending October 31, 2014
See Accountant's Compilation Report

	Current Month	Year to Date	Annual Budget	Over/(Under) Budget
<u>DISTRICT-WIDE SWMM MODEL-PHASE 2 - 60-19</u>				
Revenues				
General Property Tax	781.58	7,972.60	9,379.00	(1,406.40)
Income-Grants	0.00	21,675.27	0.00	21,675.27
Total Revenues	781.58	29,647.87	9,379.00	20,268.87
Expenses				
Engineering-SWMM	773.00	39,082.02	10,000.00	29,082.02
Total expenses	773.00	39,082.02	10,000.00	29,082.02
Total Revenues Over/(Under)				
Expenditures - District-Wide SWMM	8.58	(9,434.15)	(621.00)	(8,813.15)
<u>ACD 53/62 RMP IMPLEMENTATION - 60-21</u>				
Revenues				
General Property Tax	10,086.67	102,889.96	121,040.00	(18,150.04)
Total Revenues	10,086.67	102,889.96	121,040.00	(18,150.04)
Expenses				
Printing	0.00	416.11	1,000.00	(583.89)
Postage	0.00	692.98	0.00	692.98
Legal Notices	0.00	1,137.85	1,000.00	137.85
Legal Fees	0.00	4,852.00	20,000.00	(15,148.00)
Easement Acquisitions	0.00	6,000.00	0.00	6,000.00
Engineering	1,261.82	40,358.64	33,000.00	7,358.64
Wetland Credits	0.00	15,024.35	0.00	15,024.35
Construction Expense	0.00	406.85	74,050.00	(73,643.15)
Total expenses	1,261.82	68,888.78	129,050.00	(60,161.22)
Total Revenues Over/(Under)				
Expenditures - ACD 53/62 RMP Impleme	8,824.85	34,001.18	(8,010.00)	42,011.18
<u>LINO LAKES RMP IMPLEMENTATION - 60-22</u>				
Revenues				
General Property Tax	4,298.83	43,850.62	51,586.00	(7,735.38)
Total Revenues	4,298.83	43,850.62	51,586.00	(7,735.38)
Expenses				
Legal Notices	599.72	1,252.38	0.00	1,252.38
Legal Fees	0.00	4,411.50	10,000.00	(5,588.50)
Engineering	9,203.06	57,207.43	45,000.00	12,207.43
Total expenses	9,802.78	62,871.31	55,000.00	7,871.31
Total Revenues Over/(Under)				
Expenditures - Lino Lakes RMP	(5,503.95)	(19,020.69)	(3,414.00)	(15,606.69)

Rice Creek Watershed District
Statement of Revenue and Expenditures - Restoration Projects - 60
For the One Month and Ten Months Ending October 31, 2014
See Accountant's Compilation Report

	Current Month	Year to Date	Annual Budget	Over/(Under) Budget
<u>SW URBAN LAKE FLOOD MGMT. IMPLEMENTATION - 60-24</u>				
Revenues				
General Propety Tax	23,448.25	239,185.97	281,379.00	(42,193.03)
Grant-West Moore Lake	0.00	10,000.00	0.00	10,000.00
Total Revenues	23,448.25	249,185.97	281,379.00	(32,193.03)
Expenses				
Printing	0.00	0.00	1,000.00	(1,000.00)
Public Information & Education	0.00	0.00	5,000.00	(5,000.00)
Postage	0.00	0.00	1,000.00	(1,000.00)
Legal Notices	0.00	986.40	1,000.00	(13.60)
Contracted Services	0.00	1,718.90	0.00	1,718.90
Recruitment	0.00	448.00	0.00	448.00
Legal Fees	0.00	3,155.00	30,000.00	(26,845.00)
Engineering	0.00	32,522.35	60,000.00	(27,477.65)
Construction	0.00	11,414.46	202,000.00	(190,585.54)
Operating Transfer Out	0.00	476,780.00	0.00	476,780.00
Total expenses	0.00	527,025.11	300,000.00	227,025.11
Total Revenues Over/(Under)				
Expenditures - Southwest Urban Lake	23,448.25	(277,839.14)	(18,621.00)	(259,218.14)
 <u>JD 4/ACD 15 WMD - 60-25</u>				
Revenues				
JD 4-Special Assessments	2,083.33	40,965.95	25,000.00	15,965.95
Total Revenues	2,083.33	40,965.95	25,000.00	15,965.95
Expenses				
Professional Services	0.00	3,153.55	0.00	3,153.55
Contracted Services	0.00	0.00	15,000.00	(15,000.00)
Legal Fees	0.00	51.00	0.00	51.00
Acquisitions	0.00	277.88	0.00	277.88
Engineering Expense	0.00	136.00	5,000.00	(4,864.00)
Construction-JD4	0.00	0.00	5,000.00	(5,000.00)
Total expenses	0.00	3,618.43	25,000.00	(21,381.57)
Total Revenues Over/(Under)				
Expenditures - JD 4/ACD 15 WMD	2,083.33	37,347.52	0.00	37,347.52

Rice Creek Watershed District
Statement of Revenue and Expenditures - Restoration Projects - 60
For the One Month and Ten Months Ending October 31, 2014
See Accountant's Compilation Report

	Current Month	Year to Date	Annual Budget	Over/(Under) Budget
<u>ACD 53-62 WMD - 60-28</u>				
Revenues				
General Property Tax	12,111.00	123,539.34	145,332.00	(21,792.66)
Special Assessments-ACD 53-62	13,416.67	141,450.63	161,000.00	(19,549.37)
Total Revenues	25,527.67	264,989.97	306,332.00	(41,342.03)
Expenses				
Professional Services	0.00	2,841.45	5,000.00	(2,158.55)
Legal Fees	1,926.50	9,744.00	10,000.00	(256.00)
Engineering Expense	3,089.30	67,806.48	81,650.00	(13,843.52)
Construction Expense	0.00	0.00	219,300.00	(219,300.00)
Total expenses	5,015.80	80,391.93	315,950.00	(235,558.07)
Total Revenues Over/(Under)				
Expenditures - ACD 53-62 WMD	20,511.87	184,598.04	(9,618.00)	194,216.04
<u>CLEAR LAKE WATER QUALITY - 60-29</u>				
Revenues				
General Property Tax	25,402.17	259,117.09	304,826.00	(45,708.91)
Total Revenues	25,402.17	259,117.09	304,826.00	(45,708.91)
Expenses				
Legal Notices	0.00	61.75	0.00	61.75
Contracted Services	0.00	0.00	2,000.00	(2,000.00)
Legal Fees	0.00	551.00	5,000.00	(4,449.00)
Engineering Expense	0.00	449.00	5,000.00	(4,551.00)
Construction Expense	0.00	0.00	313,000.00	(313,000.00)
Operating Transfer Out	0.00	277,500.00	0.00	277,500.00
Total expenses	0.00	278,561.75	325,000.00	(46,438.25)
Total Revenues Over/(Under)				
Expenditures - Clear Lake	25,402.17	(19,444.66)	(20,174.00)	729.34
<u>HANSON PARK - 60-30</u>				
Revenues				
Operating Transfer In	0.00	1,215,002.00	0.00	1,215,002.00
Total Revenues	0.00	1,215,002.00	0.00	1,215,002.00
Expenses				
Engineering Expense	18,119.18	18,946.93	0.00	18,946.93
Total expenses	18,119.18	18,946.93	0.00	18,946.93
Total Revenues Over/(Under)				
Expenditures - Hanson Park	(18,119.18)	1,196,055.07	0.00	1,196,055.07

Rice Creek Watershed District
Statement of Revenue and Expenditures - Restoration Projects - 60
For the One Month and Ten Months Ending October 31, 2014
See Accountant's Compilation Report

	Current Month	Year to Date	Annual Budget	Over/(Under) Budget
<u>MIRROR POND - 60-31</u>				
Revenues				
Operating Transfer In	0.00	290,017.00	0.00	290,017.00
Total Revenues	0.00	290,017.00	0.00	290,017.00
Expenses				
Engineering Expense	10,615.85	11,443.60	0.00	11,443.60
Total expenses	10,615.85	11,443.60	0.00	11,443.60
Total Revenues Over/(Under) Expenditures - Mirror Pond	(10,615.85)	278,573.40	0.00	278,573.40
Total Revenue Over/(Under) Expenditure	\$ 72,516.84	\$ 1,425,069.28	(95,904.00)	1,520,973.28

Rice Creek Watershed District
Statement of Revenue and Expenditures - Regulatory Projects - 70
For the One Month and Ten Months Ending October 31, 2014
See Accountant's Compilation Report

	Current Month	Year to Date	Annual Budget	Over/(Under) Budget
<u>REGULATORY PROJECT MANAGEMENT - 70-00</u>				
Revenues				
General Property Tax	\$ 28,513.92	\$ 290,858.77	342,167.00	(51,308.23)
Interest Revenue	0.00	3,527.28	1,280.00	2,247.28
Miscellaneous	0.00	735.84	0.00	735.84
Total Revenues	28,513.92	295,121.89	343,447.00	(48,325.11)
Expenses				
Wages-Regulatory	15,913.45	171,091.24	211,431.00	(40,339.76)
Wages - Interns	0.00	7,774.90	6,930.00	844.90
Benefits-Regulatory	2,097.71	19,627.66	20,759.00	(1,131.34)
PERA-Regulatory	1,104.85	12,355.21	15,329.00	(2,973.79)
Payroll Taxes-Regulatory	1,135.07	12,958.70	16,978.00	(4,019.30)
Office Supplies	85.27	810.09	2,480.00	(1,669.91)
Printing	203.54	543.57	877.00	(333.43)
Rent	2,057.71	22,186.70	26,689.00	(4,502.30)
Telecommunications	409.33	4,115.06	4,842.00	(726.94)
Publications	0.00	0.00	310.00	(310.00)
Training & Education	385.00	1,954.50	3,100.00	(1,145.50)
Insurance and Bonds	0.00	6,204.72	5,564.00	640.72
Postage	38.94	2,774.11	1,860.00	914.11
Staff Travel-Regulatory	68.62	1,575.76	2,600.00	(1,024.24)
Vehicle Expense	197.54	2,295.26	3,437.00	(1,141.74)
Professional Services	4,526.00	4,526.00	33,400.00	(28,874.00)
Contracted Services	150.00	8,705.66	0.00	8,705.66
Recruitment	1,275.00	1,275.00	0.00	1,275.00
Legal Fees	0.00	268.00	1,500.00	(1,232.00)
Engineering-Regulatory	0.00	0.00	5,000.00	(5,000.00)
Equipment	0.00	0.00	500.00	(500.00)
Equipment Lease	127.12	2,143.45	2,505.00	(361.55)
Total Expenses	29,775.15	283,185.59	366,091.00	(82,905.41)
Total Revenues Over/(Under)				
Expenditures - Regulatory Management	(1,261.23)	11,936.30	(22,644.00)	34,580.30
 <u>RULE/PLAN REVISIONS - PERMIT GUIDANCE - 70-01</u>				
Revenues				
General Property Tax	3,126.50	31,892.14	37,518.00	(5,625.86)
Total Revenues	3,126.50	31,892.14	37,518.00	(5,625.86)
Expenses				
Legal Notices	0.00	694.31	0.00	694.31
Legal Fees	0.00	9,268.85	10,000.00	(731.15)
Engineering	0.00	15,060.00	30,000.00	(14,940.00)
Total expenses	0.00	25,023.16	40,000.00	(14,976.84)
Total Revenues Over/(Under)				
Expenditures - Rule/Plan Revisions	3,126.50	6,868.98	(2,482.00)	9,350.98

Rice Creek Watershed District
Statement of Revenue and Expenditures - Regulatory Projects - 70
For the One Month and Ten Months Ending October 31, 2014
See Accountant's Compilation Report

	Current Month	Year to Date	Annual Budget	Over/(Under) Budget
<u>PERMIT REVIEW - 70-03</u>				
Revenues				
General Property Tax	19,699.67	200,948.23	236,396.00	(35,447.77)
Permit Fees	0.00	67,250.50	63,960.00	3,290.50
Total Revenues	19,699.67	268,198.73	300,356.00	(32,157.27)
Expenses				
Legal Fees	1,962.40	26,831.33	50,000.00	(23,168.67)
Engineering-Permit Review	27,213.25	257,438.51	266,000.00	(8,561.49)
Total expenses	29,175.65	284,269.84	316,000.00	(31,730.16)
Total Revenues Over/(Under) Expenditures - Permit Review	(9,475.98)	(16,071.11)	(15,644.00)	(427.11)
<u>EARLY COORDINATION/ROAD AUTHORITY - 70-07</u>				
Revenues				
General Property Tax	5,627.50	57,403.82	67,530.00	(10,126.18)
Total Revenues	5,627.50	57,403.82	67,530.00	(10,126.18)
Expenses				
Legal Fees	0.00	3,135.00	5,000.00	(1,865.00)
Engineering-Road Auth.	5,411.50	64,982.27	67,000.00	(2,017.73)
Total expenses	5,411.50	68,117.27	72,000.00	(3,882.73)
Total Revenues Over/(Under) Expenditures - Early Coordination	216.00	(10,713.45)	(4,470.00)	(6,243.45)
<u>WATERSHED MANAGEMENT - 70-08</u>				
Revenues				
Total Revenues	0.00	0.00	0.00	0.00
Expenses				
Engineering-Watershed Mgmt.	962.00	962.00	0.00	962.00
Total expenses	962.00	962.00	0.00	962.00
Total Revenues Over/(Under) Expenditures - Watershed Mgmt.	(962.00)	(962.00)	0.00	(962.00)
Total Revenue Over/(Under) Expenditure	\$ (8,356.71)	\$ (8,941.28)	(45,240.00)	36,298.72

Rice Creek Watershed District
Statement of Revenue and Expenditures - Ditch & Creek Maintenance - 80
For the One Month and Ten Months Ending October 31, 2014
See Accountant's Compilation Report

	Current Month	Year to Date	Annual Budget	Over/(Under) Budget
<u>DITCH & CREEK MANAGEMENT - 80-00</u>				
Revenues				
General Property Tax	\$ 12,042.58	\$ 122,841.44	144,511.00	(21,669.56)
Grant Income	0.00	12,500.00	0.00	12,500.00
Interest Revenue	0.00	2,843.86	1,032.00	1,811.86
Total Revenues	12,042.58	138,185.30	145,543.00	(7,357.70)
Expenses				
Wages-Ditch & Creek Maint.	8,638.42	80,755.26	92,731.00	(11,975.74)
Benefits-Ditch & Creek Maint.	1,078.59	10,053.99	8,149.00	1,904.99
PERA-Ditch & Creek Maint.	626.28	5,854.74	6,723.00	(868.26)
Payroll Taxes-Ditch & Creek	644.52	6,035.10	7,094.00	(1,058.90)
Office Supplies	41.95	415.52	1,520.00	(1,104.48)
Supplies-Field	116.45	304.00	500.00	(196.00)
Printing	0.00	159.52	538.00	(378.48)
Rent	1,012.22	10,913.99	16,358.00	(5,444.01)
Telecommunications	213.29	1,890.96	2,968.00	(1,077.04)
Publications	0.00	0.00	190.00	(190.00)
Training & Education	0.00	125.00	1,900.00	(1,775.00)
Insurance and Bonds	0.00	3,410.00	3,410.00	0.00
Postage	0.00	1,150.10	1,140.00	10.10
Staff Travel	0.00	0.00	1,593.00	(1,593.00)
Vehicle Expense	197.54	20,018.51	7,847.00	12,171.51
Professional Services	0.00	0.00	500.00	(500.00)
Contracted Services	150.00	150.00	0.00	150.00
Legal Fees-Ditch & Creek	0.09	2,227.09	10,000.00	(7,772.91)
Engineering-Ditch & Creek	0.00	17,232.25	8,000.00	9,232.25
Equipment	0.00	1,119.52	2,000.00	(880.48)
Equipment Lease	62.53	1,054.40	1,535.00	(480.60)
Total Expenses	12,781.88	162,869.95	174,696.00	(11,826.05)
Total Revenues Over/(Under)				
Expenditures - Ditch & Creek Mgmt.	(739.30)	(24,684.65)	(29,153.00)	4,468.35
<u>DITCHES - GENERAL - 80-02</u>				
Revenues				
General Property Tax	13,175.42	134,397.03	158,105.00	(23,707.97)
Miscellaneous Income	0.00	3,544.00	0.00	3,544.00
Total Revenues	13,175.42	137,941.03	158,105.00	(20,163.97)
Expenses				
Supplies-Field	93.19	467.90	4,000.00	(3,532.10)
GIS Data	0.00	195.00	0.00	195.00
Vehicle Expense	0.00	9.00	0.00	9.00
Professional Services	0.00	0.00	2,000.00	(2,000.00)
Contracted Services-General	37,977.84	96,810.34	175,000.00	(78,189.66)
Legal Fees	744.75	1,868.25	1,000.00	868.25
Engineering Fees	4,316.37	15,128.37	3,000.00	12,128.37
Construction Expense	0.00	1,654.76	5,000.00	(3,345.24)
Total expenses	43,132.15	116,133.62	190,000.00	(73,866.38)
Total Revenues Over/(Under)				
Expenditures - Ditches - General	(29,956.73)	21,807.41	(31,895.00)	53,702.41

Rice Creek Watershed District
Statement of Revenue and Expenditures - Ditch & Creek Maintenance - 80
For the One Month and Ten Months Ending October 31, 2014
See Accountant's Compilation Report

	Current Month	Year to Date	Annual Budget	Over/(Under) Budget
<u>REPAIR REPORTS - 80-03</u>				
Revenues				
General Property Tax	10,540.33	107,517.60	126,484.00	(18,966.40)
Total Revenues	10,540.33	107,517.60	126,484.00	(18,966.40)
Expenses				
Printing	0.00	415.98	0.00	415.98
Postage	0.00	1,397.29	0.00	1,397.29
Legal Notices	0.00	1,564.93	0.00	1,564.93
Contracted Services	0.00	1,600.00	0.00	1,600.00
Legal Fees	569.75	11,814.75	22,000.00	(10,185.25)
Engineering	12,064.75	101,181.49	130,000.00	(28,818.51)
Total expenses	12,634.50	117,974.44	152,000.00	(34,025.56)
Total Revenues Over/(Under)				
Expenditures - Repair Reports	(2,094.17)	(10,456.84)	(25,516.00)	15,059.16
<u>ACD 10-22-32 Repair Report/Implementation - 80-06</u>				
Revenues				
General Property Tax	2,886.42	29,443.16	34,637.00	(5,193.84)
Total Revenues	2,886.42	29,443.16	34,637.00	(5,193.84)
Expenses				
Contracted Services	0.00	0.00	10,000.00	(10,000.00)
Legal Fees	227.50	812.00	6,000.00	(5,188.00)
Engineering	2,880.37	7,946.51	15,625.00	(7,678.49)
Construction	0.00	3,973.12	10,000.00	(6,026.88)
Total expenses	3,107.87	12,731.63	41,625.00	(28,893.37)
Total Revenues Over/(Under)				
Expenditures - Drainage Records	(221.45)	16,711.53	(6,988.00)	23,699.53
<u>JD-2/Hugo - 80-15</u>				
Revenues				
General Property Tax	2,773.75	28,293.89	33,285.00	(4,991.11)
Total Revenues	2,773.75	28,293.89	33,285.00	(4,991.11)
Expenses				
Contracted Services	0.00	0.00	40,000.00	(40,000.00)
Total expenses	0.00	0.00	40,000.00	(40,000.00)
Total Revenues Over/(Under)				
Expenditures - JD-2/Hugo	2,773.75	28,293.89	(6,715.00)	35,008.89

Rice Creek Watershed District
Statement of Revenue and Expenditures - Ditch & Creek Maintenance - 80
For the One Month and Ten Months Ending October 31, 2014
See Accountant's Compilation Report

	Current Month	Year to Date	Annual Budget	Over/(Under) Budget
<u>JD-2/Weir - 80-16</u>				
Revenues				
Total Revenues	0.00	0.00	0.00	0.00
Expenses				
Legal Fees-JD2/Weir Litigation	0.00	9,135.50	0.00	9,135.50
Total expenses	0.00	9,135.50	0.00	9,135.50
Total Revenues Over/(Under) Expenditures - JD-2/Weir	0.00	(9,135.50)	0.00	(9,135.50)
 <u>ACD 10-22-32 WMD - 80-17</u>				
Revenues				
Special Assessments-10-22-32 Income-ROW Charge	9,083.33	72,655.48	109,000.00	(36,344.52)
	0.00	446.92	0.00	446.92
Total Revenues	9,083.33	73,102.40	109,000.00	(35,897.60)
Expenses				
Professional Services	0.00	811.84	0.00	811.84
Contracted Services	0.00	0.00	10,000.00	(10,000.00)
Legal Fees	0.00	1,735.50	6,000.00	(4,264.50)
Engineering Expense	68.00	8,019.11	15,625.00	(7,605.89)
Construction Expense	0.00	5,905.86	10,000.00	(4,094.14)
Total expenses	68.00	16,472.31	41,625.00	(25,152.69)
Total Revenues Over/(Under) Expenditures - 10-22-32 WMD	9,015.33	56,630.09	67,375.00	(10,744.91)
Total Revenue Over/(Under) Expenditure	\$ (21,222.57)	\$ 79,165.93	(32,892.00)	112,057.93

Rice Creek Watershed District
Statement of Revenue and Expenditures - Lake & Stream - 90
For the One Month and Ten Months Ending October 31, 2014
See Accountant's Compilation Report

	Current Month	Year to Date	Annual Budget	Over/(Under) Budget
<u>LAKE & STREAM MANAGEMENT - 90-00</u>				
Revenues				
General Property Tax	\$ 9,974.58	\$ 101,746.62	119,695.00	(17,948.38)
Interest Income	0.00	6,624.67	2,404.00	4,220.67
Total Revenues	9,974.58	108,371.29	122,099.00	(13,727.71)
Expenses				
Wages-Lake & Stream Mgmt.	9,015.51	73,959.72	79,863.00	(5,903.28)
Wages-Interns	2,289.08	10,191.55	14,070.00	(3,878.45)
Benefits-Lake & Stream Mgmt.	626.83	5,935.67	9,076.00	(3,140.33)
PERA-Lake & Stream Mgmt.	651.07	5,323.97	5,790.00	(466.03)
Payroll Taxes-Lake & Stream	837.78	6,188.51	6,913.00	(724.49)
Office Supplies	26.68	251.44	880.00	(628.56)
Printing-Lake & Stream	0.00	121.23	311.00	(189.77)
Rent	643.81	6,941.68	9,470.00	(2,528.32)
Telecommunications	140.97	1,416.95	1,718.00	(301.05)
Publications	0.00	0.00	110.00	(110.00)
Training & Education	0.00	125.00	1,100.00	(975.00)
Insurance and Bonds	0.00	1,941.29	1,974.00	(32.71)
Postage	0.00	731.50	660.00	71.50
Staff Travel	12.32	896.00	922.00	(26.00)
Vehicle Expense	0.00	9,695.83	3,437.00	6,258.83
Contracted Services	150.00	150.00	0.00	150.00
Education & Communication	0.00	0.00	5,000.00	(5,000.00)
Legal Fees	0.00	631.00	1,000.00	(369.00)
Engineering	0.00	1,243.16	15,000.00	(13,756.84)
Equipment Lease	39.78	670.65	889.00	(218.35)
Repairs & Maint.-Lake & Stream	0.00	500.00	0.00	500.00
Total Expenses	14,433.83	126,915.15	158,183.00	(31,267.85)
Total Revenues Over/(Under)				
Expenditures - Lake & Stream Mgmt.	(4,459.25)	(18,543.86)	(36,084.00)	17,540.14
<u>BMP COST-SHARE PROGRAM - 90-01</u>				
Revenues				
General Property Tax	10,885.17	111,035.13	130,622.00	(19,586.87)
Grant Income	0.00	11,050.00	0.00	11,050.00
Income-Cost-Share	0.00	2,942.02	0.00	2,942.02
Total Revenues	10,885.17	125,027.15	130,622.00	(5,594.85)
Expenses				
Contracted Services	3,880.00	41,792.09	40,000.00	1,792.09
Engineering-BMP Cost-Share	0.00	0.00	10,000.00	(10,000.00)
Construction-BMP Costshare	10,162.92	14,547.06	120,000.00	(105,452.94)
Total expenses	14,042.92	56,339.15	170,000.00	(113,660.85)
Total Revenues Over/(Under)				
Expenditures - BMP Cost-Share Program	(3,157.75)	68,688.00	(39,378.00)	108,066.00

Rice Creek Watershed District
Statement of Revenue and Expenditures - Lake & Stream - 90
For the One Month and Ten Months Ending October 31, 2014
See Accountant's Compilation Report

	Current Month	Year to Date	Annual Budget	Over/(Under) Budget
<u>LAKE & STREAM MONITORING - 90-04</u>				
Revenues				
General Property Tax	12,806.08	130,629.59	153,673.00	(23,043.41)
Total Revenues	12,806.08	130,629.59	153,673.00	(23,043.41)
Expenses				
Supplies-Field	41.19	3,072.83	3,000.00	72.83
Computer Software	0.00	0.00	750.00	(750.00)
Printing	0.00	0.00	350.00	(350.00)
Telecommunications	10.23	71.96	1,000.00	(928.04)
Publications	0.00	0.00	300.00	(300.00)
Training & Education	245.00	785.00	2,926.00	(2,141.00)
Postage	0.00	80.81	0.00	80.81
Staff Travel	212.80	1,421.49	700.00	721.49
Vehicle Expense	197.55	2,545.87	1,500.00	1,045.87
Professional Services	0.00	484.08	14,000.00	(13,515.92)
Contracted Services	1,417.50	19,156.00	88,145.00	(68,989.00)
Legal Fees	0.00	209.00	500.00	(291.00)
Engineering	324.39	21,281.94	44,350.00	(23,068.06)
Equipment	0.00	10,856.42	14,360.00	(3,503.58)
Repairs & Maintenance	0.00	0.00	500.00	(500.00)
Lab Expense	1,368.00	14,573.00	26,620.00	(12,047.00)
Total expenses	3,816.66	74,538.40	199,001.00	(124,462.60)
Total Revenues Over/(Under)				
Expenditures - Lake & Stream Montr.	8,989.42	56,091.19	(45,328.00)	101,419.19
<u>BALD EAGLE LAKE TMDL - 90-06</u>				
Revenues				
General Property Tax	7,429.00	75,780.18	89,148.00	(13,367.82)
Loan Proceeds	0.00	200,000.00	200,000.00	0.00
Miscellaneous Income	0.00	4,460.00	0.00	4,460.00
Total Revenues	7,429.00	280,240.18	289,148.00	(8,907.82)
Expenses				
Printing	0.00	129.62	0.00	129.62
Miscellaneous	0.00	1,160.20	0.00	1,160.20
Postage	0.00	148.92	0.00	148.92
Contracted Services	0.00	417,648.14	0.00	417,648.14
Legal Fees	1,983.93	13,150.33	0.00	13,150.33
Engineering Expense	555.50	20,949.99	20,000.00	949.99
Construction Expense	0.00	17,171.15	96,024.00	(78,852.85)
Total expenses	2,539.43	470,358.35	116,024.00	354,334.35
Total Revenues Over/(Under)				
Expenditures - Bald Eagle Lake TMDL	4,889.57	(190,118.17)	173,124.00	(363,242.17)

Rice Creek Watershed District
Statement of Revenue and Expenditures - Lake & Stream - 90
For the One Month and Ten Months Ending October 31, 2014
See Accountant's Compilation Report

	Current Month	Year to Date	Annual Budget	Over/(Under) Budget
<u>ANOKA CHAIN OF LAKES - 90-16</u>				
Revenues				
General Property Tax	9,604.50	97,971.56	115,254.00	(17,282.44)
Total Revenues	9,604.50	97,971.56	115,254.00	(17,282.44)
Expenses				
Contracted Services	0.00	0.00	95,000.00	(95,000.00)
Legal Fees	0.00	0.00	15,000.00	(15,000.00)
Acquisitions	0.00	0.00	10,000.00	(10,000.00)
Engineering	6,475.75	6,475.75	30,000.00	(23,524.25)
Total expenses	6,475.75	6,475.75	150,000.00	(143,524.25)
Total Revenues Over/(Under)				
Expenditures - Anoka Chain of Lakes	3,128.75	91,495.81	(34,746.00)	126,241.81
<u>TMDL IMPLEMENTATION - 90-23</u>				
Revenues				
General Property Tax	30,734.50	313,510.02	368,814.00	(55,303.98)
Total Revenues	30,734.50	313,510.02	368,814.00	(55,303.98)
Expenses				
Contracted Services	0.00	4,051.10	375,000.00	(370,948.90)
Recruitment	0.00	448.00	0.00	448.00
Legal Fees	0.00	15,185.79	15,000.00	185.79
Acquisitions	0.00	0.00	10,000.00	(10,000.00)
Engineering	1,165.50	51,420.26	80,000.00	(28,579.74)
Construction	0.00	58,542.17	0.00	58,542.17
Easements	0.00	28,361.66	0.00	28,361.66
Operating Transfer Out	0.00	456,644.00	0.00	456,644.00
Total expenses	1,165.50	614,652.98	480,000.00	134,652.98
Total Revenues Over/(Under)				
Expenditures - TMDL Implementation	29,569.00	(301,142.96)	(111,186.00)	(189,956.96)
<u>BALD EAGLE LAKE WMD - 90-24</u>				
Revenues				
Bald Eagle-Special Assessment	5,416.67	51,043.71	65,000.00	(13,956.29)
Income-Grants	0.00	0.00	30,000.00	(30,000.00)
Total Revenues	5,416.67	51,043.71	95,000.00	(43,956.29)
Expenses				
Legal Notices	0.00	0.00	2,000.00	(2,000.00)
Professional Services	119.60	563.98	2,000.00	(1,436.02)
Contracted Services	0.00	11,448.05	48,976.00	(37,527.95)
Legal Fees	0.00	0.00	1,000.00	(1,000.00)
Engineering Expense	687.00	2,925.00	5,000.00	(2,075.00)
Total expenses	806.60	14,937.03	58,976.00	(44,038.97)
Total Revenues Over/(Under)				
Expenditures - Bald Eagle Lake WMD	4,610.07	36,106.68	36,024.00	82.68

Rice Creek Watershed District
Statement of Revenue and Expenditures - Lake & Stream - 90
For the One Month and Ten Months Ending October 31, 2014
See Accountant's Compilation Report

	Current Month	Year to Date	Annual Budget	Over/(Under) Budget
<u>BALD EAGLE LAKE STORMWATER REUSE PROJECT - 90-25</u>				
Revenues				
General Property Tax	2,159.50	22,028.14	25,914.00	(3,885.86)
Grants-BWSR CWL	0.00	64,716.25	124,275.00	(59,558.75)
	2,159.50	86,744.39	150,189.00	(63,444.61)
Expenses				
Printing	0.00	133.59	0.00	133.59
Legal Fees	0.00	1,564.53	5,000.00	(3,435.47)
Engineering	2,631.00	15,474.00	10,000.00	5,474.00
Construction Expense	0.00	169,755.91	143,000.00	26,755.91
	2,631.00	186,928.03	158,000.00	28,928.03
Total Revenues Over/(Under)				
Expenditures - Bald Eagle Lake WMD	(471.50)	(100,183.64)	(7,811.00)	(92,372.64)
Total Revenue Over/(Under) Expenditure	\$ 43,098.31	\$ (357,606.95)	(65,385.00)	(292,221.95)

Rice Creek Watershed District
Statement of Revenue and Expenditures - District Facilities - 95
For the One Month and Ten Months Ending October 31, 2014
See Accountant's Compilation Report

	Current Month	Year to Date	Annual Budget	Over/(Under) Budget
<u>LONG LAKE SEDIMENT BASIN - 95-01</u>				
Revenues				
General Propety Tax	\$ 4,670.08	\$ 47,637.59	56,041.00	(8,403.41)
Interest	0.00	688.91	250.00	438.91
Total Revenues	<u>4,670.08</u>	<u>48,326.50</u>	<u>56,291.00</u>	<u>(7,964.50)</u>
Expenses				
Contracted Services	0.00	0.00	52,000.00	(52,000.00)
Legal Fees	0.00	2,299.00	2,000.00	299.00
Engineering	2,046.64	11,548.64	6,000.00	5,548.64
Total Expenses	<u>2,046.64</u>	<u>13,847.64</u>	<u>60,000.00</u>	<u>(46,152.36)</u>
Total Revenues Over/(Under)				
Expenditures - Long Lake Sediment Basi	<u>2,623.44</u>	<u>34,478.86</u>	<u>(3,709.00)</u>	<u>38,187.86</u>
<u>OUTFALL & STRUCTURE ASSESSMENT& REPAIR - 95-03</u>				
Revenues				
General Propety Tax	5,862.08	59,796.69	70,345.00	(10,548.31)
Total Revenues	<u>5,862.08</u>	<u>59,796.69</u>	<u>70,345.00</u>	<u>(10,548.31)</u>
Expenses				
Supplies-Field	0.00	182.58	0.00	182.58
Vehicle Expense	0.00	216.34	0.00	216.34
Legal Fees	0.00	0.00	2,000.00	(2,000.00)
Engineering	0.00	3,950.00	25,000.00	(21,050.00)
Construction	0.00	0.00	48,000.00	(48,000.00)
Total expenses	<u>0.00</u>	<u>4,348.92</u>	<u>75,000.00</u>	<u>(70,651.08)</u>
Total Revenues Over/(Under)				
Expenditures - Outfall & Structure	<u>5,862.08</u>	<u>55,447.77</u>	<u>(4,655.00)</u>	<u>60,102.77</u>
<u>EASEMENT OPERATION & MAINTENANCE - 95-04</u>				
Revenues				
General Propety Tax	1,563.25	15,946.07	18,759.00	(2,812.93)
Total Revenues	<u>1,563.25</u>	<u>15,946.07</u>	<u>18,759.00</u>	<u>(2,812.93)</u>
Expenses				
Supplies-Field	272.68	421.93	3,000.00	(2,578.07)
Training & Education	0.00	262.43	0.00	262.43
Vehicle Expense	0.00	2,006.09	2,000.00	6.09
Contracted Services	0.00	4,530.64	8,000.00	(3,469.36)
Engineering	0.00	0.00	2,000.00	(2,000.00)
Equipment	0.00	2,840.68	5,000.00	(2,159.32)
Total expenses	<u>272.68</u>	<u>10,061.77</u>	<u>20,000.00</u>	<u>(9,938.23)</u>
Total Revenues Over/(Under)				
Expenditures - Wall Wetland Restoration	<u>1,290.57</u>	<u>5,884.30</u>	<u>(1,241.00)</u>	<u>7,125.30</u>
Total Revenue Over/(Under) Expenditure	<u>\$ 9,776.09</u>	<u>\$ 95,810.93</u>	<u>(9,605.00)</u>	<u>105,415.93</u>

ITEMS FOR DISCUSSION AND INFORMATION

1. Staff reports.

MEMORANDUM
Rice Creek Watershed District

To: Board of Managers

Date: 10/16/2014

From: Samantha Kreibich

Subject: District Technician Report (September 16, 2014 – October 15, 2014)

Highlights from Preceding Month

- ✓ Performed routine and follow-up field inspections, totaling 25
- ✓ Worked through existing permits in the southern portions of the district, closing out and following up as necessary. (ongoing project)
- ✓ Followed up and inspected a homeowner concern regarding Silver View Park in MV
- ✓ Closed out 3 permits, totaling \$8100 in surety return (On behalf of RCD, closed out 1 permit, totaling \$1500 in surety)
- ✓ Attended October 1st CAC meeting to discuss new cost-share applications
- ✓ Attended October 8th Board Meeting to present new cost-share applications
- ✓ Volunteered for a half day at Children's Waterfest as the rain drop mascot
- ✓ Reviewed the St. Anthony's SWMP and changes to MN Rule 8410, Local Water Mgmt.
- ✓ Attended MS4 meeting at the City of Arden Hills to help the city with their MS4 permit
- ✓ Participated in monthly permit triage meeting
- ✓ Attended the MN Water Resource Conference, a two day event
- ✓ Kept up with landowners involved in the urban stormwater cost-share program, including issuing vouchers and visiting sites of new potential C-S applicants (totaling 2)
- ✓ Assisted in the training of RCD staff in permit inspections
- ✓ Began acting as point of contact for IT concerns, facilitating communications with Solbrekk.

MEMORANDUM
Rice Creek Watershed District

To: Board of Managers

Date: 10/10/14

From: Elizabeth Hosch

Subject: District Inspector's Report (September 17 through October 10, 2014)

Highlights from Preceding Month

- ✓ Conducted surety request, routine and follow-up inspections and investigations, as requested/necessary, totaling 45.
- ✓ Closed 14 permits and permit assignments, returning a total of \$22,000 in cash surety.
- ✓ Worked through existing permits in the northern portions of the district, closing out and following up as necessary. (ongoing project)
- ✓ Continued processing of 2013 Hugo Audit review, per MOU with City of Hugo.
- ✓ Helped prepare workstation for new staff member, Samantha Kreibich.
- ✓ Prepared specific historic permits for Board decision. (ongoing project as time allows)
- ✓ Attended City staff meetings, as appropriate.
- ✓ Acted as point of contact for IT concerns, facilitating communications with Solbrekk.
- ✓ Wrapped up work with RCWD, concluded employment on 10/10/14. Thanks everyone!!

MEMORANDUM
Rice Creek Watershed District

To: Board of Managers

Date: October 15, 2014

From: Chris Buntjer

Subject: Technical Specialist/Permit Reviewer's Report for September 18, 2014 – October 15, 2014

Highlights for Preceding Month

- ✓ Meetings and Assistance to parties in need of pre-application/application assistance:
 - TH97 and TH61 Roundabout – 14-001R
 - Gradient Financial Site Improvements – 13-157R
 - Round-a-bout at CSAH 18/CR 62 - 14-118R
 - 11958 Isleton Ave Court North – 14-140R
 - John Brown flooding complaint - 14-142R
 - 14211 Furman St NE - 14-145R
 - I-35W Interchange at Cleveland Avenue – 14-158R
 - Pole Barn Addition at 16273 Kwei St NE - 14-161R

- ✓ Permit Application Review
 - Amendment for Headwaters 7th Addition - 13-091
 - Fenway 7-lot Subdivision – 13-079
 - Hugo Audit – 14-007 to 14-009
 - Oak Acres – 14-044
 - Pallet Resource Building #2 - 14-064
 - White Bear Library Expansion - 14-065
 - CSAH 21 Reconstruction – 14-068
 - Amendment for Autumn Grove Park - 14-073
 - Isabell Estates – 14-082
 - White Pine Senior Living – 14-083
 - Dan Mike Grading - 14-086
 - Talan Ridge – 14-087
 - CSM North Central Business Park - 14-091
 - 9350 Lake Dr N Demo & Landscaping - 14-092
 - Trail Bridge over Rice Creek - 14-093
 - Shoreview Raising Canes – 14-094
 - SP 6216-130 TH 51 & Cty Rd E - 14-095
 - SP 6284-171 County Road F Bridge - 14-096
 - Gradient Parking Lot West Repairs - 14-097
 - Initial Reviews for Permits 14-092 through 14-097

- ✓ Meetings / Administration:
 - Rule revision work
 - Rule interpretation/policy discussion
 - Tracking of Permit Hours
 - MN Water Resources Conference on 10-14-2014 and 10-15-2014
 - Annual Leave on 9-26 -2014 and 9-29-2014 to 10-3-2014, Sick Leave on 10-13-2014
 - 9-24-2014 and 10-8-2014 Board Meetings

Date: October 13, 2014
To: RCWD Board of Managers
From: Kyle Axtell, Water Resource Specialist
Subject: Staff Activity Report for 09/15/14 – 10/10/14

Tasks completed during preceding period:

- Continued project management activities for the Targeted Watershed Demonstration Project, specifically the Hansen Park and Mirror Pond projects, including weekly coordination calls with HEI staff.
- Continued to monitor the final close-out items for the Oneka Ridge Golf Course project. At this time, the project is 100% complete and we are merely waiting on final contract close-out paperwork and revisions to the project's Operations and Monitoring Plan from the project engineer.
- Assisted with planning for an upcoming minor amendment to RCWD's Watershed Management Plan.
- Assisted S. Kreibich with administration of the District's Water Quality BMP Cost-Share Program.
- Provided additional wetland regulation guidance to Wild Marsh Townhomes HOA.
- Removed the pre-treatment chamber from a failed Rice Lake area raingarden which was later modified by a contractor to reduce the ponding depth of the feature to 2".
- Assisted ACD staff with coordination of the Golden Lake Iron-Enhanced Sand Filter Project in Blaine.
- Met with Arden Hills staff and consultants on 09-17-14 to discuss proposed ordinance revisions necessary for the City to comply with the MPCA's new MS4 General Permit.
- Completed preparation for and held a tour of the Oneka Ridge project with representatives from the White Bear Area Chamber of Commerce on 09-17-14.
- Processed closure of RCWD Permit 13-072 and the NPDES permit for the Oneka Ridge Golf Course project.
- Working with S. Kreibich, completed review and submitted comments on the City of Saint Anthony's Local Surface Water Management Plan.
- Researched and provided floodplain information to two landowners.
- Completed cost-share site visits with several landowners.
- Updated the engineer's report for RCWD permit application 14-015.
- Spoke with reporters about the Targeted Watershed Demonstration Project and the Oneka Ridge Golf Course Project.
- With J. Bromelkamp, completed a poster for presentation at the MN Water Resources Conference on 10-14-14 and 10-15-14.
- Toured Hansen Park with P. Belfiori on 09-26-14.
- Attended RCWD Staff meetings on 09-15-14 and 09-29-14.
- Took annual leave from 09-30-14 through 10-08-14 (6.5 days).

MEMORANDUM
Rice Creek Watershed District

To: Board of Managers

Date: 10/16/2014

From: Theresa Stasica

Subject: Office Manager 9/18-10/16

- Coded invoices for payment this month which were reviewed by Administrator Belfiori and sent to our accountant Nancy Martinson via an excel spreadsheet.
- Deposited checks.
- Placed orders for supplies as needed.
- Provided minutes for workshops, reviewed and edited regular Board minutes.
- Provide appropriate notices for public hearings.
- Provide information, assembled and distributed board packets. Organize the board packet as a pdf format for Internet distribution.
- Updated materials on the website.
- Attended board meetings.
- Post board meetings on Youtube.
- Attended staff meetings.
- Receiving and entering permit information new and old, issued permits.
- Assisted staff in their daily activities.
- Scanning documents that District receives into Laserfiche.
- Recorded easements.
- Certified levy.
- Posted new position, organize incoming resumes.
- Handled Elizabeth's final HR documents and set up new employee Samantha.
- Invoice as necessary.
- Track Accounts Receivable for District.
- Track and invoice (if needed) for numerous grants.
- Maintained filing system.
- Answered phones and assist public.

MEMORANDUM

Rice Creek Watershed District

Date: October 15, 2014
To: Phil Belfiori, Administrator
From: Jessica Bromelkamp; Education, Outreach and Communication Coordinator
Subject: Education, Outreach and Communication Work (9/16/14– 10/15/14)

General

- Drafted column for Press Publications about zebra mussel infestation.
- Drafted Bald Eagle outlet press release.
- Drafted column about drainage system maintenance and water management districts.
- Drafted Clear Lake project article and reviewed slide for Washington County Commissioners.
- Drafted alum treatment article for fall newsletter.
- Obtained quotes and coordinated the design of graphics for District trucks.
- Coordinated Winter Road Maintenance training with Fortin.
- Drafted flyer and sent invite for Winter Road Maintenance training.
- Co-drafted and printed Water Resource Conference poster presentation about the Oneka Ridge Water Reuse Project.
- Reviewed Middle Rice Creek proposals.
- Began recruiting CAC members through city staff contacts and social media.
- Drafted School of Environmental Science PowerPoint presentation.
- Assisted with posting District Inspector position online.

Blue Thumb

- Assisted with preparing for and attended the Blue Thumb strategic planning meeting.
- Met with Metro Blooms to determine goals for the work group and prepare for the transition before January 1, 2015.
- Coordinated a working group to determine communications goals and a governance structure.

MEMORANDUM
Rice Creek Watershed District

To: Board of Managers **Date:** 10/15/2014
From: Patrick Hughes
Subject: Regulatory Assistant 09/17/2014 - 10/15/2014

- Created new permit files for the online database
- Created new review files for the online database
- Scanned new permits into Laserfiche
- Sent multiple notices of decision
- Sent multiple notices of application
- Completed multiple wetland delineation review checklists
- Reviewed wetland permit application for completeness
- Sent out CAPROC notices
- Issued multiple permits
- Started Working CAPROC ERs 14-082, 14-083, 14-087, 14-092, 14-093, 14-094
- Created Working Compliance ERs 14-065, 14-082
- Updated the employee permit hours tracking document
- Created multiple site location and drainage summary maps for Board Packet
- Reviewed projects for potential permits
- TEP visit for 07-019
- Responded to multiple information requests
- Sent multiple permit application receipts
- Provided 2013 CWPMP Annual Report to BWSR and COE

MEMORANDUM
Rice Creek Watershed District

To: Board of Managers

Date: October 16, 2014

From: Nick Tomczik

Subject: Permit Coordinator/Wetland Specialist's Report for September - October 2014

Highlights for Preceding Month

- ✓ Meetings and Assistance to parties in need of pre-application/application assistance
 - Fridley Ponds Site Visit
 - Main Street Development Pre-Application Meeting
 - Roseville I-35W & Cleveland
 - Pulte - Blaine Residential Site 109th & Lexington
 - TCAAP Development Discussion
 - Lino Lakes New Outlet
- ✓ Wetland Delineation/Replacement/Exemption Application
 - Ramsey County Parks Trail Delineation
 - Forest Lake Airport Replacement
 - Weisner Property Potential Violation
 - Forest Lake City Hall Water Quality
 - Lino Lakes Outlet
 - Tiller Proposed Development
 - I35W & Hwy 96 Delineation
 - I35W & Cty H Delineation
 - 12th Ave New Brighton Delineation
 - ACD 72 Delineation
 - Dan Mike Delineation
 - Blaine Site 7 Delineation
 - Dellwood golf Delineation
- ✓ Training
 - BWSR Academy Discussion
- ✓ Meetings / Administration
 - Arden Hills MS4 discussion
 - CLFLWD Discussion on permit process
 - Weston Woods Discussion
 - Longview Estates Discussion
 - USACOE Meeting on Brown's Preserve
 - 53-62 ACOE/Application
 - Brown's Preserve MBI
 - Dan Hair Communications
 - Rule Revision 2
 - Permit Triage
 - HEI/Smith Partners/RCWD Communication Board Meetings & Workshops (agenda items, participation)

MEMORANDUM
Rice Creek Watershed District

To: Board of Managers

Date: October 15, 2014

From: Catherine Nester

Subject: District Technician/Inspector Report (September 17, 2014 – October 14, 2014)

Highlights from Preceding Month

- ✓ Regular lake and stream monitoring at various monitoring sites throughout the District in coordination with District Lake and Stream Specialist.
- ✓ Ongoing work as needed in coordination with District Lake and Stream Specialist.
- ✓ Performed routine and follow-up field inspections, totaling 6.
- ✓ Prepared for departure of District Inspector & assisted with organizing temporary inspection coverage in coordination with Ramsey Conservation District & Washington Conservation District.
- ✓ Continued work on private ditch inspection project per agreement with the City of Blaine.
- ✓ Out of office October 14-15 for the Water Resources Conference.

MEMORANDUM
Rice Creek Watershed District

To: Board of Managers

Date: 10/15/2014

From: Matthew Kocian

Subject: Lake and Stream Report for September 17 – October 15, 2014

Highlights for Preceding Month

Bold indicates significant time commitment

- **Monitoring**
 - **Collect stream runoff samples**
 - **Collect stream flow measurements**
 - **Collect lake water quality samples**
 - Lake plant surveys

- **Hardwood Creek TMDL Implementation**
 - Final financial work (engineer and contractor billing, and grant financial report)
 - **Final grant report preparation**
 - Data submittal to EQUIS

- University of Minnesota carp project
 - Manage intern and equipment

- White Bear Lake zebra mussels
 - Assist lake survey
 - RCWD Board discussion

- GIS
 - Various mapping projects for District staff
 - Update and install new GIS software on staff computers

- **BWSR Targeted Watershed Project**
 - **Middle Rice Creek project startup**
 - Review engineering proposals, organize engineer interviews, answer engineer questions, prepare materials (memos, scoring sheets, etc)
 - Carp Management project startup
 - Organize supplemental data collection for Management Plan support (Reshanau Lake fish survey)

- Anoka County AIS meeting: expenditure of county AIS prevention dollars

- Attend Minnesota Water Resources Conference

ITEMS FOR DISCUSSION AND INFORMATION

2. November calendar.

OCTOBER						
S	M	T	W	T	F	S
			1	2	3	4
5	6	7	8	9	10	11
12	13	14	15	16	17	18
19	20	21	22	23	24	25
26	27	28	29	30	31	

NOVEMBER						
S	M	T	W	T	F	S
						1
2	3	4	5	6	7	8
9	10	11	12	13	14	15
16	17	18	19	20	21	22
23	24	25	26	27	28	29
30						

To: RCWD Board of Managers

From: Theresa

Date: October 15, 2014

Subject: Significant Dates during Month of November 2014

Wednesday, November 5, 5:30 p.m. Advisory Committee Meeting, Lino Lakes City Hall
Community Room, Board Liaison Manager Preiner

Monday, November 10, 2:00 p.m. Board Workshop
RCWD District Conference Room

Tuesday, November 11 Veteran's Day, Office Closed

Wednesday, November 12, 9:00 a.m. Regular Board of Managers Meeting
at Shoreview City Hall Council Chambers

Wednesday, November 26 NO Regular Board of Managers Meeting

Thursday-Friday, November 27 & 28 Thanksgiving Holiday, Office Closed

Deadline for submission of per diem claims is November 13