

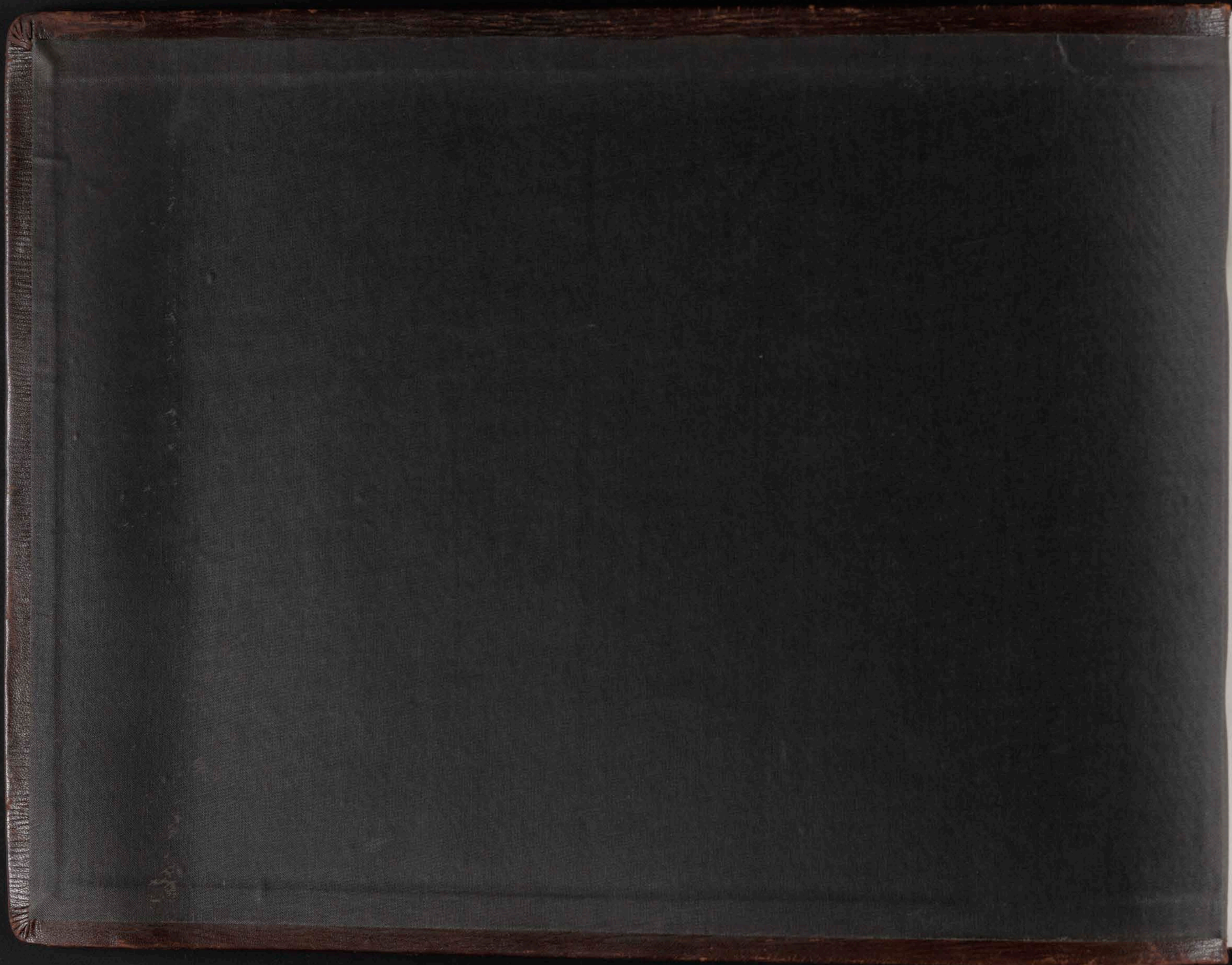


## Oliver Iron Mining Company Mining Operations

### **Copyright Notice:**

This material may be protected by copyright law (U.S. Code, Title 17). Researchers are liable for any infringement. For more information, visit [www.mnhs.org/copyright](http://www.mnhs.org/copyright).

ALBUM  
17





OLIVER IRON MINING CO., SUBSIDIARY OF UNITED STATES STEEL CORPORATION

778  
6-8-18

1  
Hull-Rust P.M.

Album #3

386

WATERBURY MINING CO.  
Engineering Dept.  
1918  
386 B.L.M.



OLIVER IRON MINING CO., SUBSIDIARY OF UNITED STATES STEEL CORPORATION

775  
6-8-18

2

56182

Marion Boston & Howard  
on Hill Park St

385

McKENZIE PHOTO CO.  
Engineering Dept.

1918

385 Bk. M.

McKenzie Photo



OLIVER IRON MINING CO. SUBSIDIARY OF UNITED STATES STEEL CORPORATION

774  
6-8-18

Marion 300-ton shaft -  
on - Hull Rust Pit

384

W. L. IRON MINING CO.  
Engineering Dept.

1918

384 B. M.

McKenzie Photo



OLIVER IRON MINING CO., SUBSIDIARY OF UNITED STATES STEEL CORPORATION

773  
6-8-18

Manum 300 tons aboard  
on Hill Rock Pit

373

also prepared by  
State Surveying Dept.  
1918  
383 B&M.



OLIVER IRON MINING CO., SUBSIDIARY OF UNITED STATES STEEL CORPORATION

772  
6-8-18

#92790

Marion 300 ton shovel in  
on a Hill Road Pit

382

CLYDE IRON MINING CO.  
Mining Engineering Dept.  
Date 1918  
No. 382 - Bk. M.  
Drawn

McKenzie Photo



OLIVER IRON MINING CO., SUBSIDIARY OF UNITED STATES STEEL CORPORATION

771.  
6-8-18

Marion 300 ton school  
in m in Hull Creek Pit

381

THE NATIONAL PHOTO CO.  
Washington D.C.

1918  
381 Bk. M

McKenzie Photo



OLIVER IRON MINING CO., SUBSIDIARY OF UNITED STATES STEEL CORPORATION

776  
6-8-18

How Pet

380

Wash. Inst. of Nat. Hist.  
Mammal Research Dept.  
1918  
380 Blk. M  
Date  
Drawer

McCann's Photo



777  
6-8-18

OLIVER IRON MINING CO., SUBSIDIARY OF UNITED STATES STEEL CORPORATION

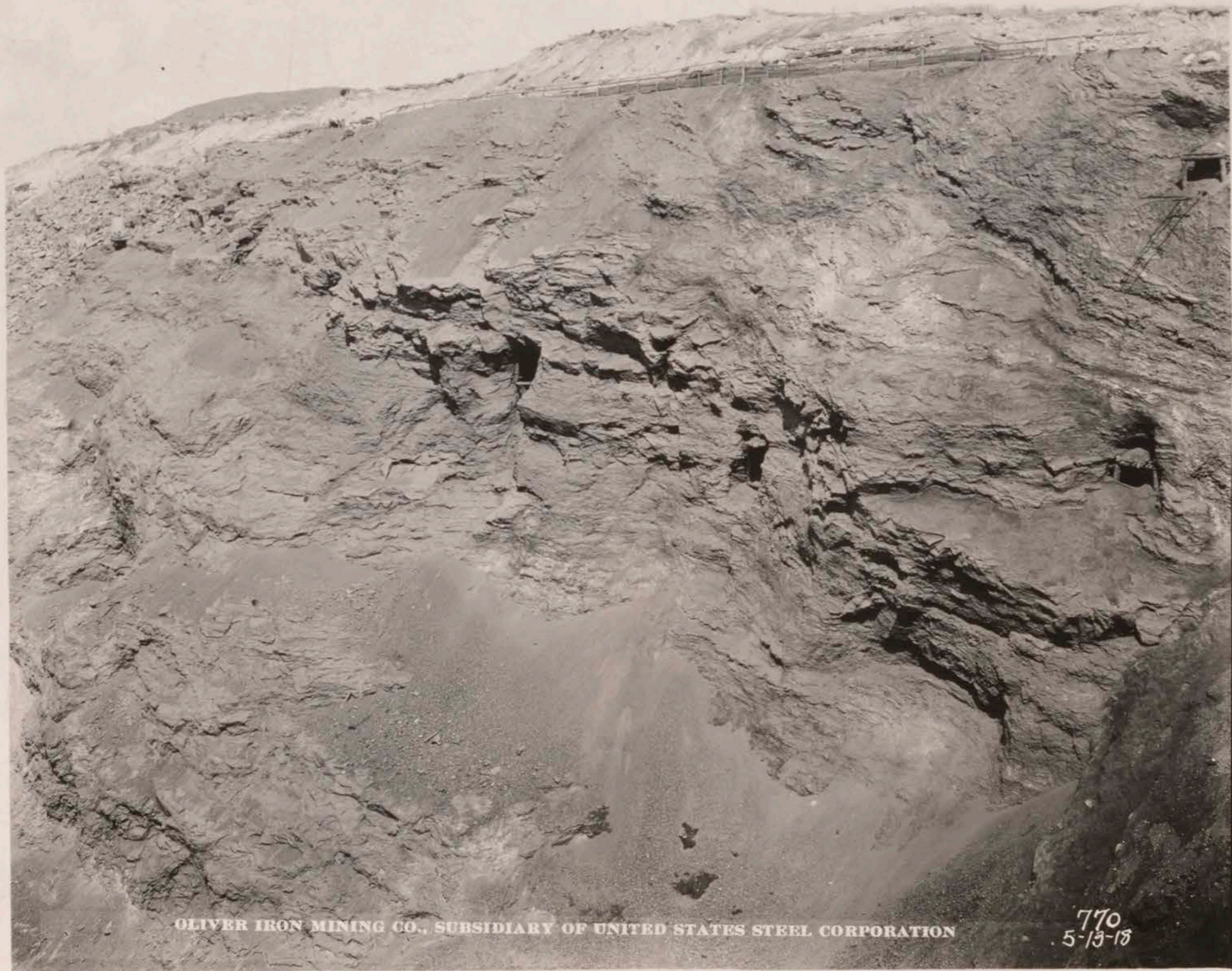
#92789

Kur Pit

379

SILVER TONN MINE CO.  
 Mining Engineering Dept.  
 1918  
 379 B.M.

McKenzie Photo



OLIVER IRON MINING CO., SUBSIDIARY OF UNITED STATES STEEL CORPORATION

770  
5-13-18

x  
770  
Alpena Pit, showing  
Rock Wall on East Side

378

1918  
378 Bk. M



OLIVER IRON MINING CO., SUBSIDIARY OF UNITED STATES STEEL CORPORATION

769  
5-13-18

No. 769 Alpina Pit.

377

W. H. & A. S. S. CO.  
Photo Engraving Dept.  
1918  
377 Bk. M  
Date \_\_\_\_\_  
Inventor \_\_\_\_\_

McKerrel Photo



OLIVER IRON MINING CO., SUBSIDIARY OF UNITED STATES STEEL CORPORATION

#768  
5-13-18

\*768- Missah Mtu Open Pit.

376

MINING CO.  
Engineering Dept.  
1918  
376 Bk M

McKenzie Photo

# 767 Missah Mtn Open Pit.

375

WELLS PHOTO ENGRAVING CO.  
Engraving Dept.

1918  
375 Bk. M.

McKenzie Photo



OLIVER IRON MINING CO., SUBSIDIARY OF UNITED STATES STEEL CORPORATION

767.  
5-13-18



766  
5-15-15

OLIVER IRON MINING CO., SUBSIDIARY OF UNITED STATES STEEL CORPORATION

" 766 - Bucyrus 300 ton Shovel  
in Missabi Mtn.

374

STANDARD DRAWING CO.	
Mechanical Engineering Dept.	
Date	1918
No.	374 Bk. M
Drawn	
Checked	



OLIVER IRON MINING CO., SUBSIDIARY OF UNITED STATES STEEL CORPORATION

N 765 - Bueyus 300 tons Shovel  
in Mississ Mtn.

373

McKENZIE PHOTO CO.  
Engineering Dept.

1918

373 Bk M

McKenzie Photo



OLIVER IRON MINING CO., SUBSIDIARY OF UNITED STATES STEEL CORPORATION

764  
5-13-17

N  
764 Bueynus 300 ton haul  
in Misaki Mtn.

371

AMERICAN MINING CO.  
Engineering Dept.

1918

371 Bk. M.



OLIVER IRON MINING CO., SUBSIDIARY OF UNITED STATES STEEL CORPORATION

763  
5-13-18





OLIVER IRON MINING CO., SUBSIDIARY OF UNITED STATES STEEL CORPORATION

762  
5-13-18

\* 762 Bueynus 300 ton Shovel  
in Mireah Mtn.

369

WYOMING IRON MINING CO.  
Engineering Dept.

1918

369 Bk. M.

Class \_\_\_\_\_  
Index \_\_\_\_\_

McKenna Photo



OLIVER IRON MINING CO., SUBSIDIARY OF UNITED STATES STEEL CORPORATION

761  
5-13-18

# 761 Bueyns. 300 ton Phord  
in Misaki Mts.

3/8

AMERICAN ENGINE CO.  
Engineering Dept.  
1918  
368 Bk. M.

McKean's Photo



OLIVER IRON MINING CO., SUBSIDIARY OF UNITED STATES STEEL CORPORATION

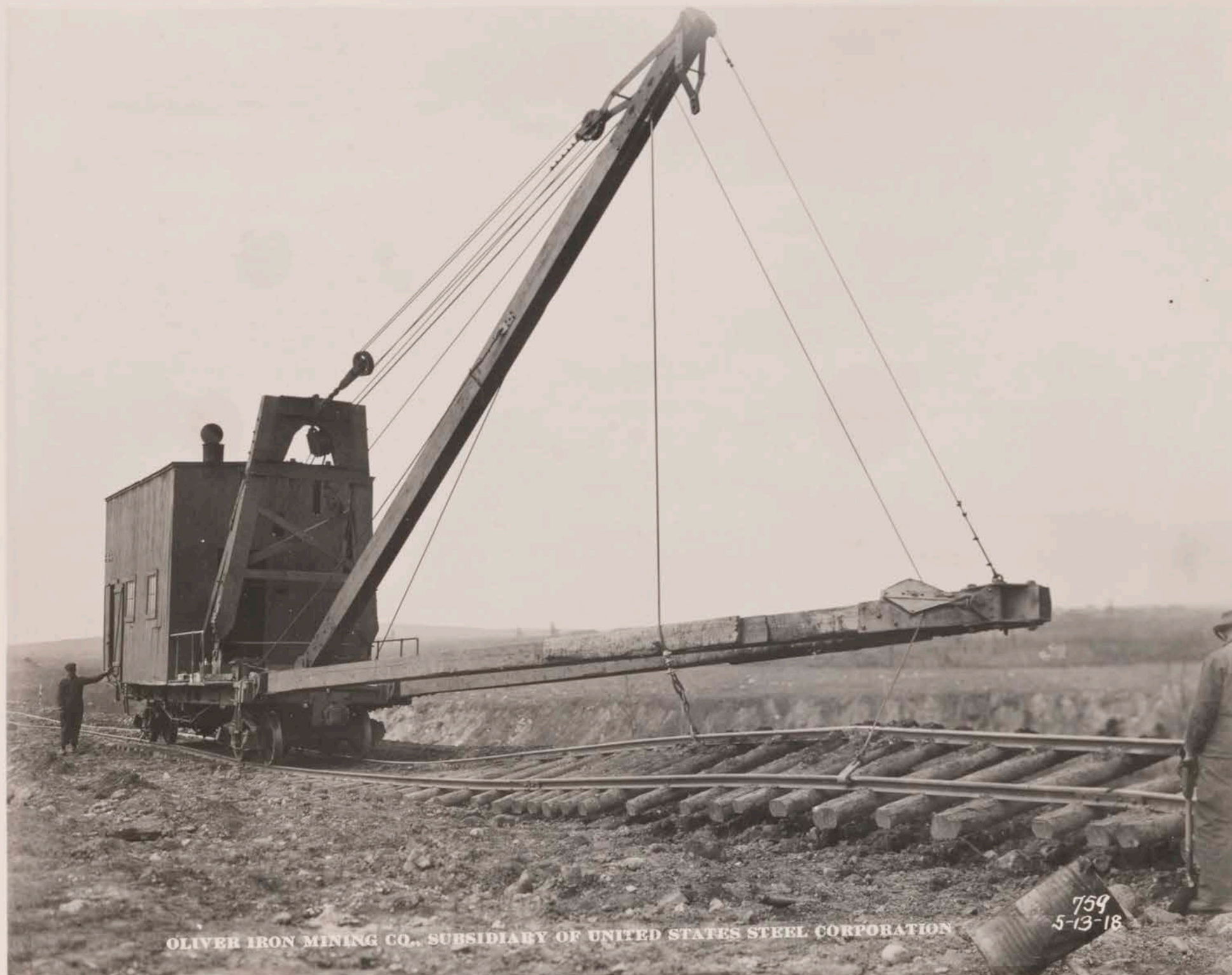
760  
5-13-13

\* 760 - Track Shifter  
Muesali Mtn Dump

367

GLUED TO BACK OF  
1918  
367 B.M.

Mckenzie Photo



OLIVER IRON MINING CO., SUBSIDIARY OF UNITED STATES STEEL CORPORATION

759  
5-13-18

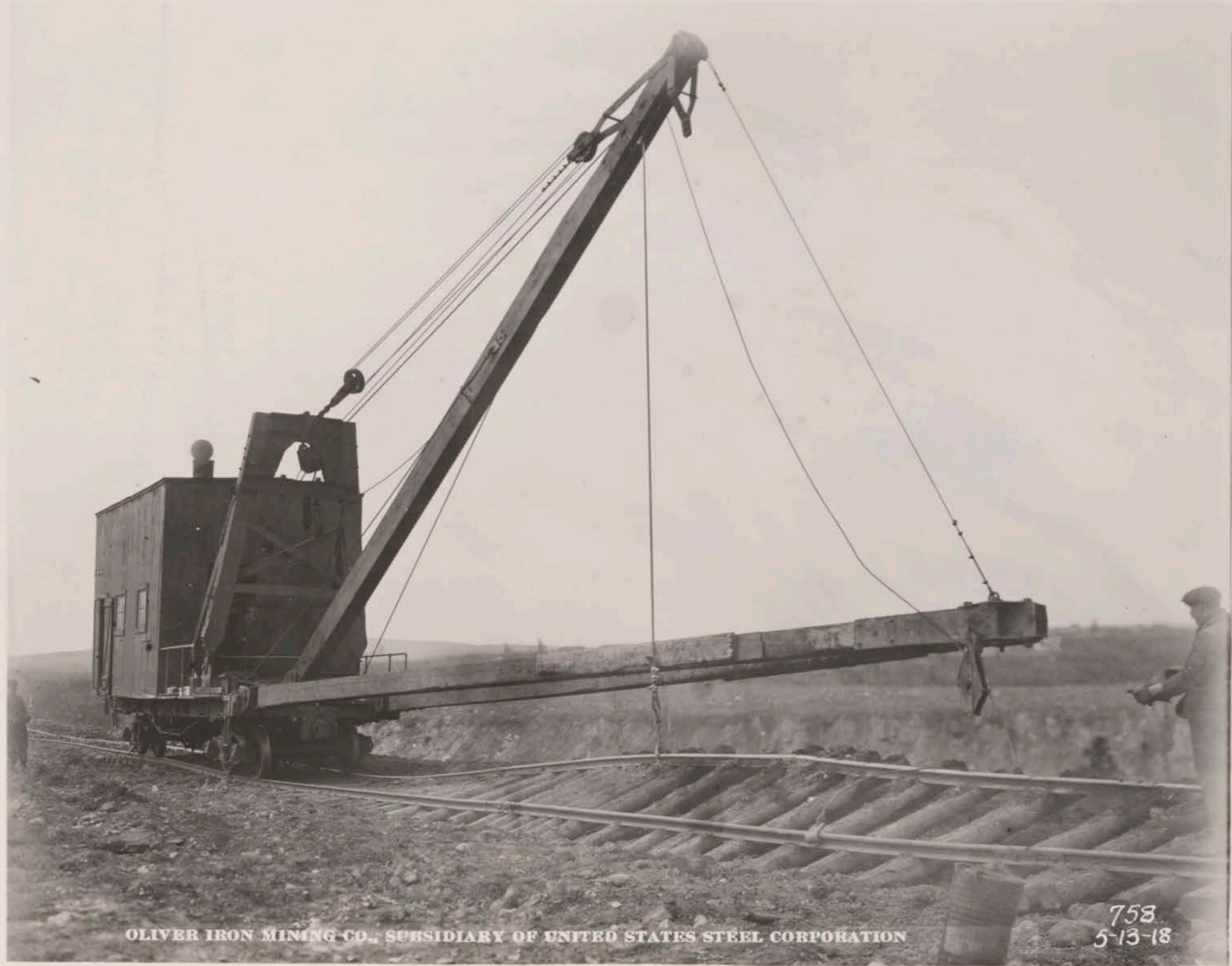
# 759 Track Shifter  
Musseth Mtn Camp

AMERICAN MINING CO.  
Engineering Dept.

1918

366 Bk. M.

National Photo



OLIVER IRON MINING CO., SUBSIDIARY OF UNITED STATES STEEL CORPORATION

758  
5-13-18

# 758 Track Shifter,  
Muscati Mtn Dump

365

AMERICAN MINING CO.  
Processing Dept.

1918

365 Bl. M

McKenzie Photo



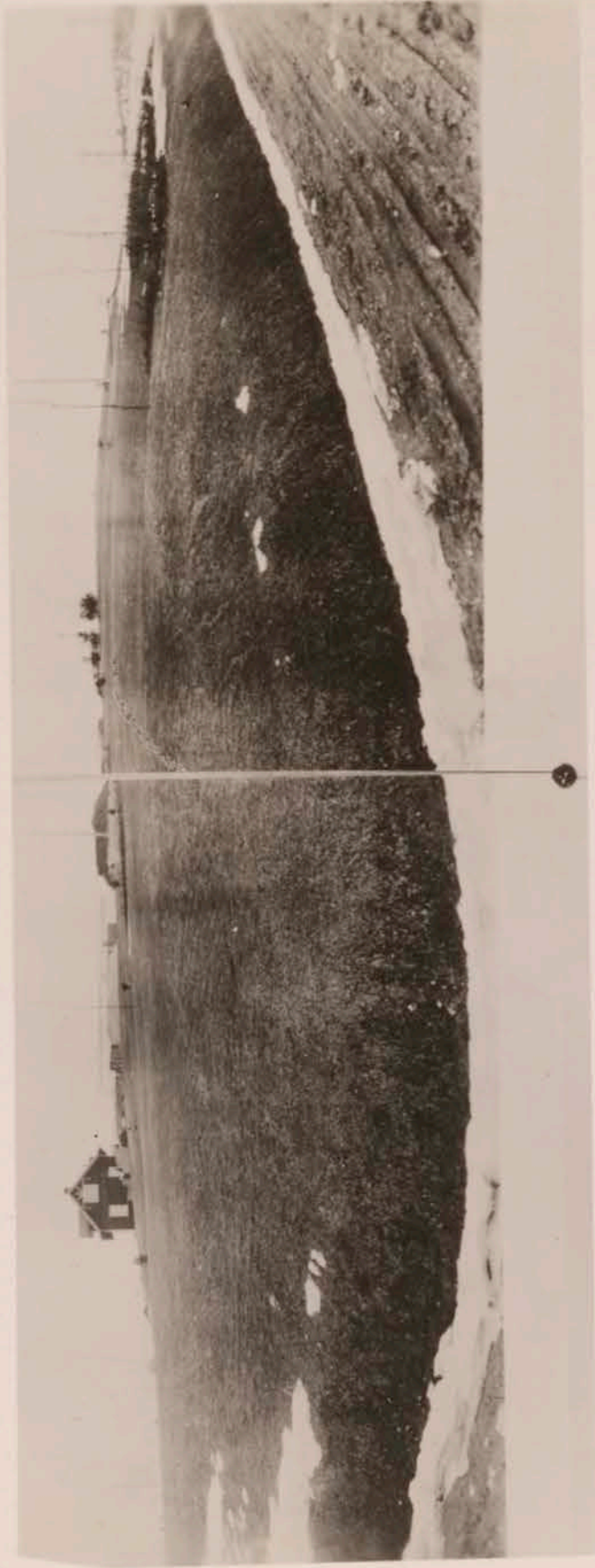
OLIVER IRON MINING CO., SUBSIDIARY OF UNITED STATES STEEL CORPORATION 755  
5-13-18

X  
765.

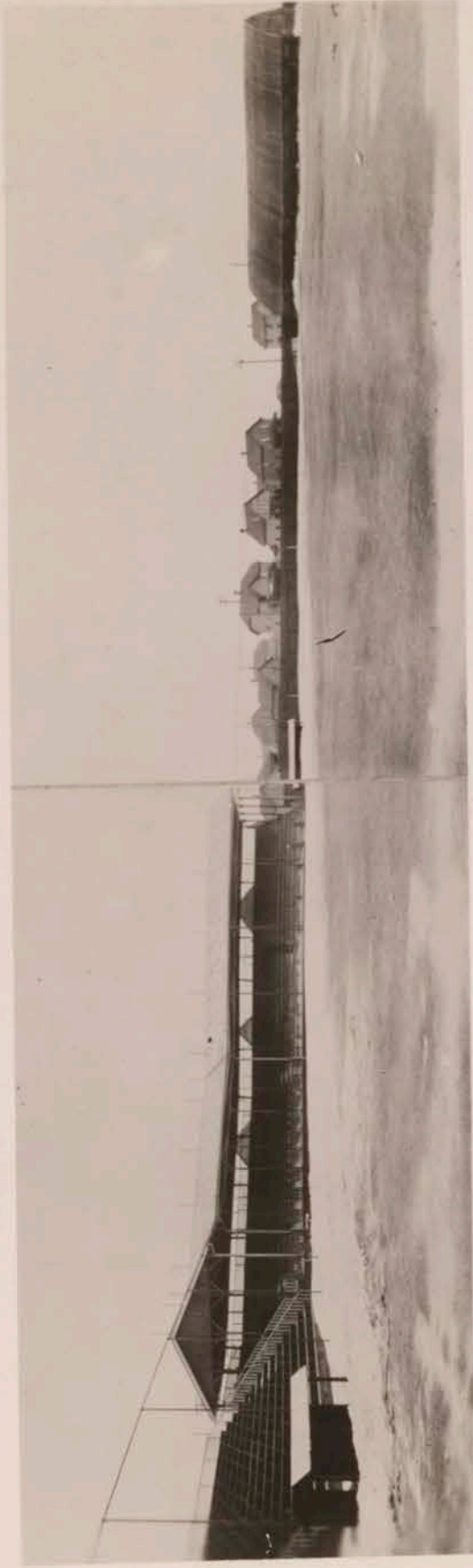
20 yard steel shuffling car  
on Missah Mtn Dump.

372

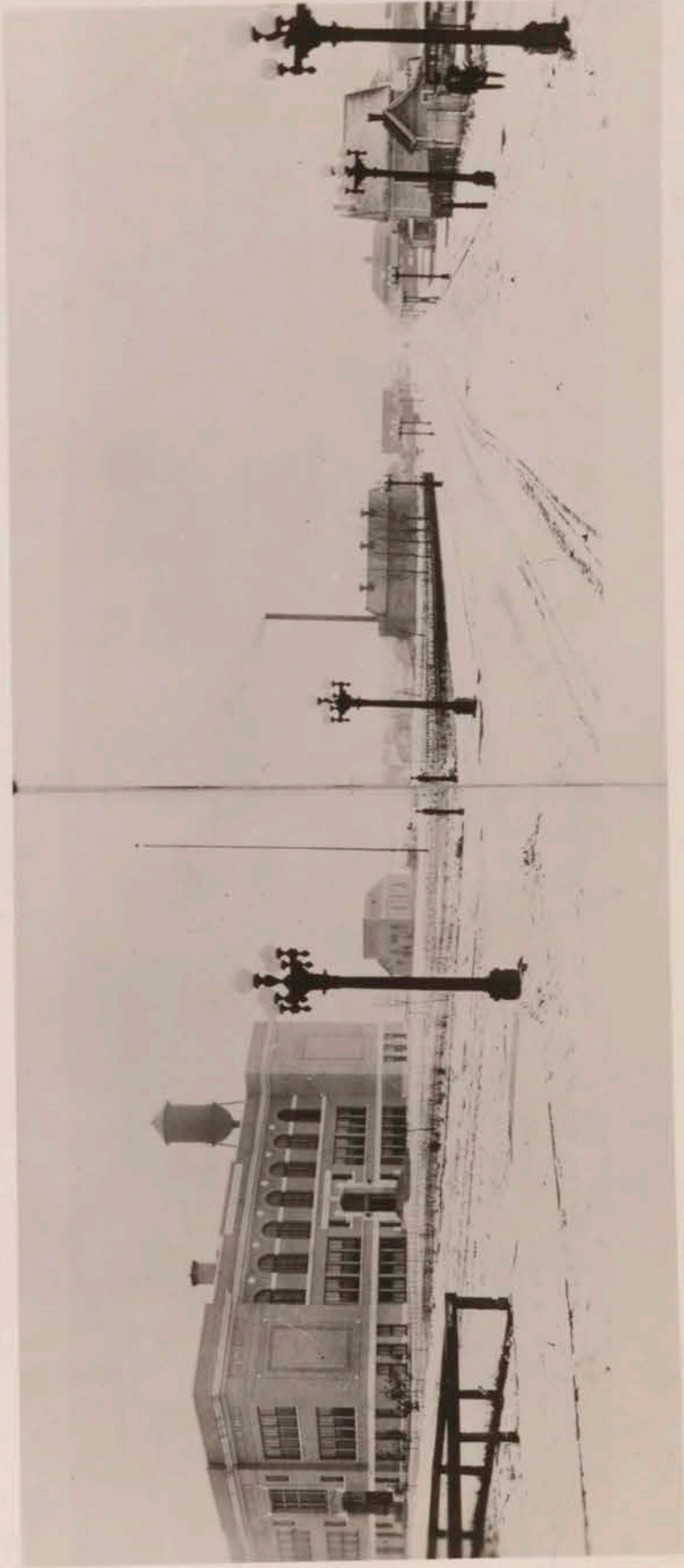
1918  
372 Bk.M.



*Roosevelt Park, Chisholm, Minn.*



*Ball Park, Hibbing, Minn.*



*High School and White Way, Mt. Iron, Minn.*

OLIVER IRON MINING CO.  
Mining Engineering Dept.

Date 1916

No. 359-BKM

Drawn \_\_\_\_\_

Entered \_\_\_\_\_



*Headquarters, Virginia District*



*Garbage Stand, Virginia District*



*Technical High School, Virginia, Minn.*



*St. Louis Co. District Court House, Virginia, Minn.*

OLIVER IRON MINING CO.  
Mining Engineering Dep't.  
Date..... 1916  
No..... 358 - BK. M  
Case.....  
Drawer.....



*High School, Hibbing, Minn.*



*City Hall, Chisholm, Minn.*



*Carnegie Library, Chisholm, Minn.*



*High School, Chisholm, Minn.*

*H.S. Hibbing*

*City Hall Chisholm*

*Carnegie Lib.*

*H.S. Chisholm*

OLIVER IRON MINING CO.  
Mining Engineering Dep't.

Date..... 1916

No..... 357-BKM

Case.....

Drawer.....



Olcott School, Marble, Minn.



Monroe Location, Chisholm, Minn.



Monroe Location, Chisholm, Minn.

Monroe



Club House, Hibbing, Minn.

Club House

OLIVER IRON MINING CO.  
Mining Engineering Dep't.  
Date 1916  
No. 355 B.K.M  
Class  
Project



*Greenway School, Coleraine, Minn.*



*Alley, Virginia District Headquarters*



*Part of residence district, Coleraine, Minn.*



*Shelter from blasting in pit.*

OLIVER IRON MINING CO.  
Mining Engineering Dep't.  
Date 354 - B K M  
No. ....  
Case .....



*Club House Headquarters, Hibbing, Minn.*



*Rest Room, Virginia District, Club House*



*Billiard Room, Hibbing Club House*



*Club House, Hibbing, Hibbing Headquarters.*

OLIVER IRON MINING CO.  
Mining Engineering Dept.  
Date..... 1916  
No. 353 B.K.M  
From.....  
Drawn.....



*High School, Chisholm, Minn.*



*White Way, Hibbing, Minn.*



*Municipal Green House, Hibbing, Minn.*



*Mining Location, Adams District, showing workingmen's houses*

OLIVER IRON MINING CO.  
Mining Engineering Dept.

Date 1916

No. 352 BKM

By \_\_\_\_\_  
Engineer \_\_\_\_\_

R  
||  
||  
||

12/12



*Fire Hall and Library, Chisholm, Minn.*



*Village of Buhl, Minn. and High School*

OLIVER IRON MINING CO.  
Mining Engineering Dept.  
Date 1916  
No. 351-BK M  
Case  
Drawer



*Old High School, Gilbert, Minn.*



*Mt. Iron, Minn. High School*



*Court House and White Way, Virginia, Minn.*



*High School, Chisholm, Minn.*

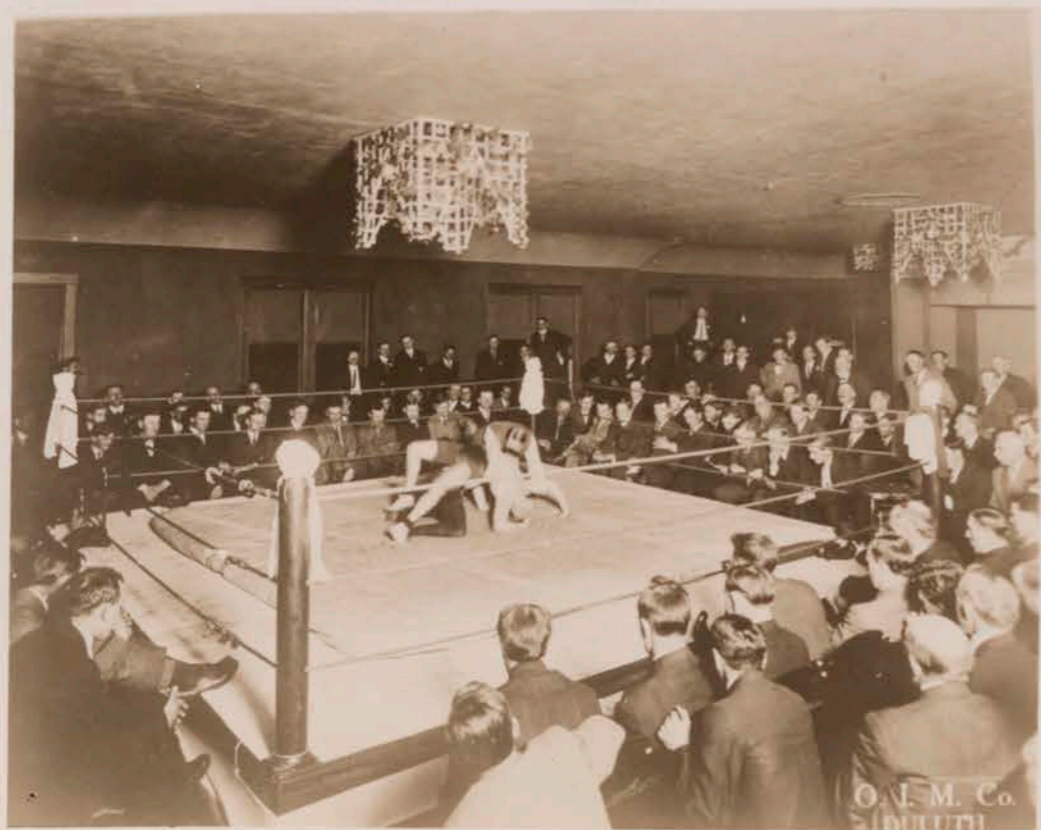
OLIVER IRON MINING CO.  
Mining Engineering Dept.  
Date... 1916  
No. 350 BK M  
Case.....  
Drawer.....



*Showing workingmen's houses, Hibbing District*



*Mining Location. Showing Workmen's Homes, Hibbing District.*



*Wrestling in auditorium, Hibbing Club House*



*Mining Location, Adams District, showing workingmens houses.*

OLIVER IRON MINING CO.  
Mining Engineering Dept.

Date 1916

No. 349 BKM

Case

Drawn



District Court House, Virginia, Minn.



Village Hall, Hibbing, Minn.



North Side School, Virginia, Minn.



Detention Hospital, Hibbing, Minn.

OLIVER IRON MINING CO.  
Mining Engineering Dept.  
Date.....1916  
No.....348-BK M  
Case.....  
Drawer.....



*Mining location, showing workmen's houses in Hibbing District*



*Club House, Hibbing, Minn.*



*Reading room, Hibbing Club House*



*Bowling Alley, Hibbing Club House*

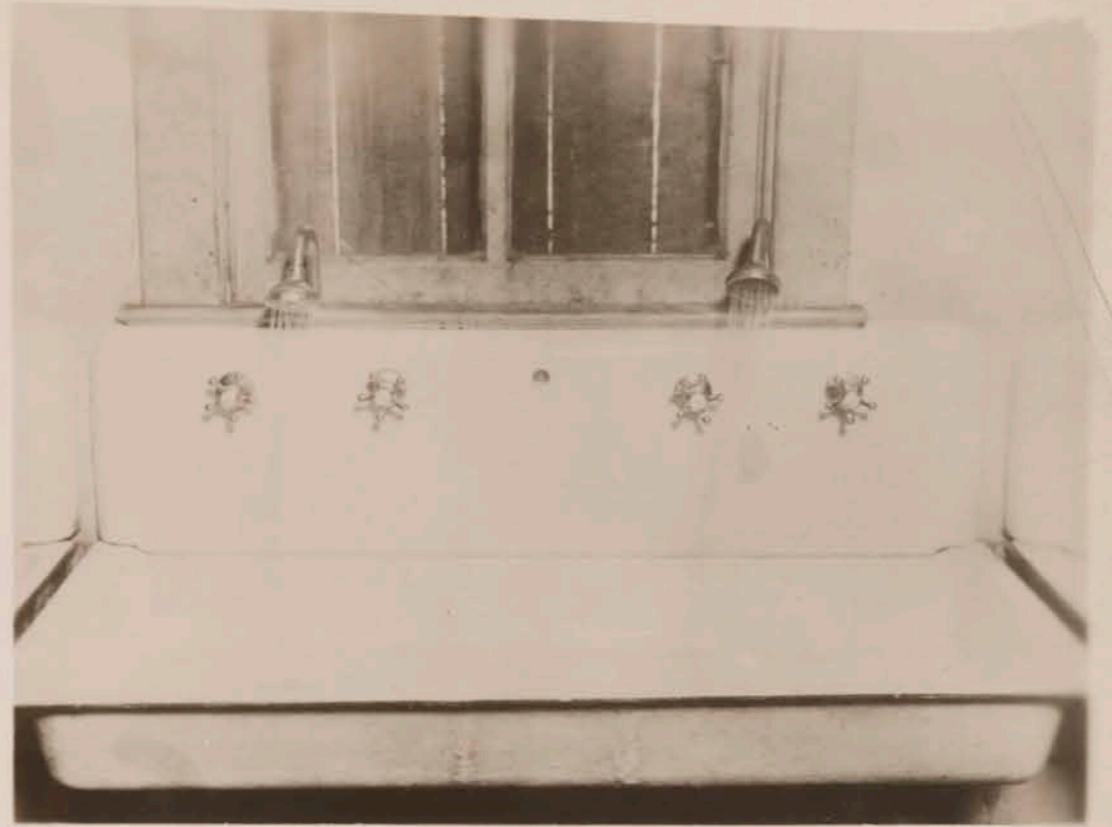
OLIVER IRON MINE CO.  
Mining Engineering Dept.

Date 1916

No. 347-BK M

Case

Drawer



*Washing Sinks in Charge Houses*



*City Hall, Coleraine, Minn.*



*Carnegie Library, Coleraine, Minn.*

OLIVER IRON MINING CO.  
Mining Engineering Dep't.

Date 1916

No. 346 B K M.

Case .....

Drawn .....



*More Hospital, Eveleth, Minn.*

*Hospital, Foyal, Minn.*

OLIVER IRON MINE CO.  
Mining Engineering Dept.  
Date 1916  
No. 345 BKM  
Case  
Printer



*Olcott Public School, Marble, Minn.*



*Town Hall, Marble, Minn.*



*Laboratory and Club House, Virginia Headquarters*

OLIVER IRON MINING CO.  
Mining Engineering Dep't.  
Date 1916  
No. 344 Bk. M.  
Case \_\_\_\_\_  
Drawer \_\_\_\_\_



*Public School Gardens at Coleraine and Bovey.*



559



*Coleraine, Minnesota. This garden is fenced in and plowed by the Company and is divided into 34 plots of ground, which are distributed by lot among employees applying for same. Each plot has an area of about 3300 square feet.*



561

OLIVER IRON MINING CO.  
Mining Engineering Dep't.

Date 1916

No. 343-Bk. M.

Case .....

Drawer .....



*Auditorium and Fire Hall, Eveleth, Minn.*



*Carnegie Library Mt. Iron, Minn.*



*Public Library, Eveleth, Minn.*



*City Hall, Biwabik, Minn.*

OLIVER IRON MINING CO.  
Mining Engineering Dept.

Date 1916

No. 342 BK M

Case.....

Drawer.....



*Mining Location  
Alley, Virginia Dist. headquarters location, Virginia  
Showing Collection of garbage cans, woodsheds, etc.*



*Mining Location.  
Virginia Dist. headquarters, Workingmen's houses.  
Virginia, Minnesota.*



*Monroe Location, Chisholm.  
Monroe Mine, Chisholm District, near Chisholm, Minn.*



*Garbage Collection, Virginia Dist. headquarters*

OLIVER IRON MINING CO.  
Mining Engineering Dep't.

Date 1916

No. 341 BK. M

Case.....

Drawer.....



*High School, Gilbert, Minn.*



*Carnegie Library, Hibbing, Minn.*



*City Market Place, Hibbing, Minn.*



*Public Library, Virginia, Minn.*

OLIVER IRON MINING CO.  
Mining Engineering Dep't.

Date . . . 1916

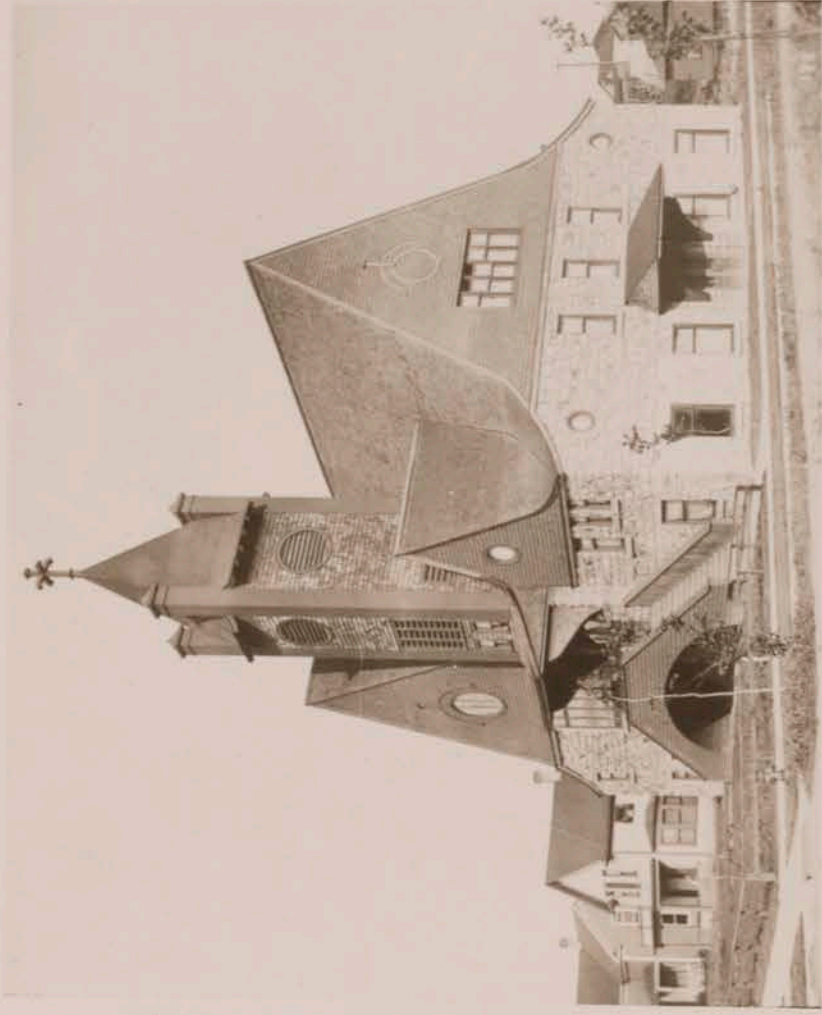
No. . . 340-Bk.M

Case . . . . .

Drawer . . . . .



*Public School, Canisteo District, Coleraine, Minn.*



*Coleraine, Minn. Canisteo District, Church.*

OLIVER IRON MINING CO.  
Mining Engineering Dep't.  
Date 1916  
No. 339 - BK. M.  
Case.....  
Drawer.....



*Village Hall, Buhl, Minn.*



*Detention Hospital, Chisholm, Minn.*

OLIVER IRON MINING CO.  
Mining Engineering Dep't.

Date 1916

No. 338-BK.M.

Case.....

Drawer.....



*Residence of Asst. Gen'l. Superintendent Canisteo District,  
Coleraine, Minn.*



*Part of Residence District, Coleraine, Minn.*



*Hospital, Coleraine*



*Mining Location, showing workingmen's homes Eveleth, Minn.*

OLIVER IRON MINING CO.  
Mining Engineering Dep't.

Date 1916

No. 337 Bk. M.

Cash

Drawer



*Fayal School, Eveleth. Minn.*



*New High School, Eveleth. Minn.*



*Old High School bldg. Biwabik. Minn.*



*Library and Grounds, Eveleth. Minn.*

OLIVER IRON MINING CO.  
Mining Engineering Dep't.

Date 1916

No. 336-BK. M.

Case.....

Drawer.....



*Rest room, Virginia Dist. Club house.  
Virginia District Headquarters.*



*Alley in Mining Location.  
Garbage collection, Virginia Dist. headquarters.  
showing collection of Garbage from cons, woodsheds etc.*



*Virginia Dist. Club house.  
View of Billiard Room, Virginia District Headquarters.*



*City Hall, Virginia-Minn.*

OLIVER IRON MINING CO.  
Mining Engineering Dep't.

Date 1916

No. 335-Bk. M

Case.....

Drawer.....



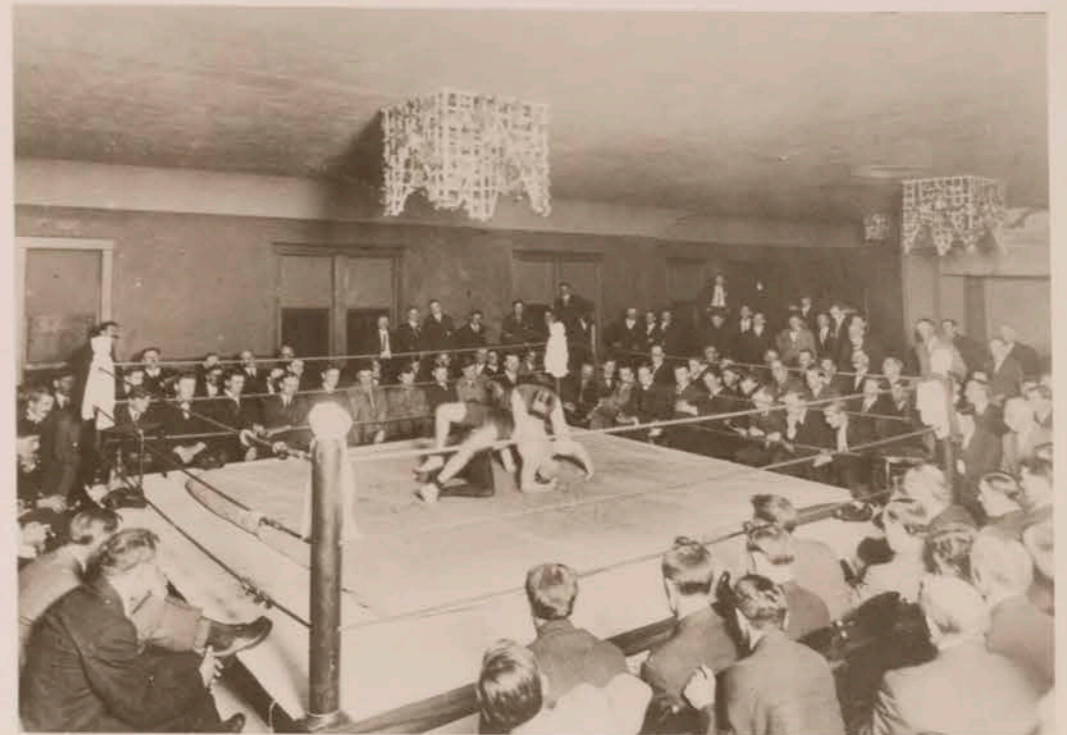
*Virginia District Club House  
View of Billiard Room Virginia District Headquarters.*



*St. Louis Co. District Court House, Virginia Minn.*



*Virginia District Club House, Virginia, Minn.*



*Wrestling, Hibbing District Club House Auditorium  
Hibbing District Headquarters.*

OLIVER IRON MINING CO.  
Mining Engineering Dept't.

Date 1916

No. 334-BK M

Class.....

Drawer.....



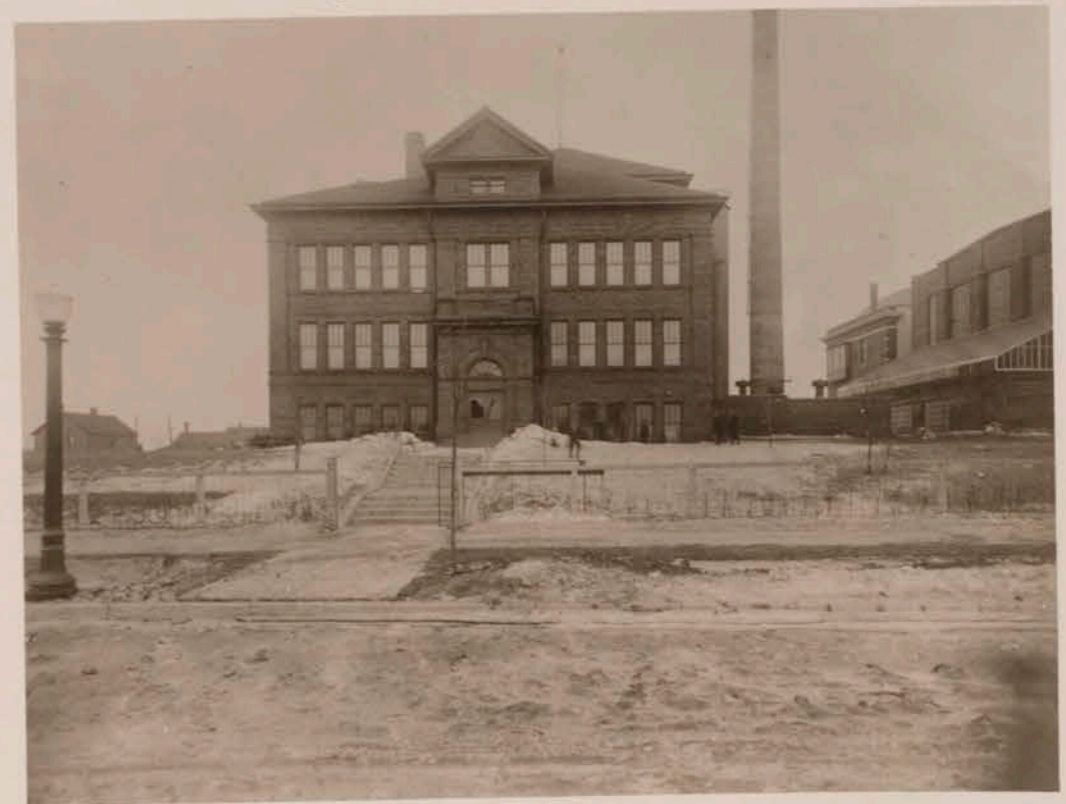
*High School, Biwabik, Minn.*



*Washington School, Hibbing, Minn.*



*Auditorium, Eveleth, Minn.*



*School at Chisholm, Minn.*

OLIVER IRON MINING CO.  
Mining Engineering Dept.  
Date 1916  
No. 333 - Bk M.  
Case.....  
Drawn.....



**PATENTS**

13506	2,9 08	2,13 12	1,12 14
4,10 00	2,7 09	3,12 12	3,17 14
2,14 04	2,28 10	2,27 12	3,24 14
4,23 07	2,16 10	2,24 12	2,10 14
2,25 08	2,20 10	4,15 13	1,4 15
2,2 09	12,20 10	1,2 13	1,2 15
	2,2 15	4,20 15	

OTHER PATENTS PENDING.

668

