



Charles A. Lindbergh, Jr.  
postcard album

## **Copyright Notice:**

This material may be protected by  
copyright law (U.S. Code, Title 17).

Researchers are liable for any  
infringement. For more information,  
visit

[www.mnhs.org/copyright](http://www.mnhs.org/copyright).

# POSTCARD ALBUM

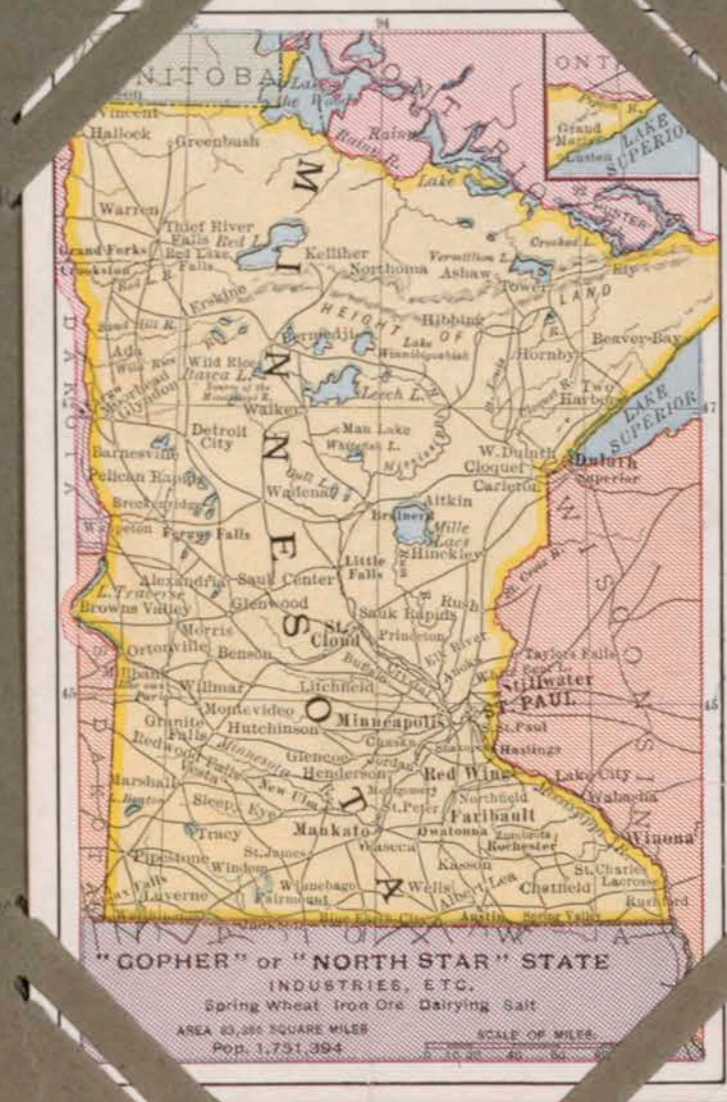


ALBUM  
24

C.A.L. Jr.



ST. PAUL FROM WESTSIDE.



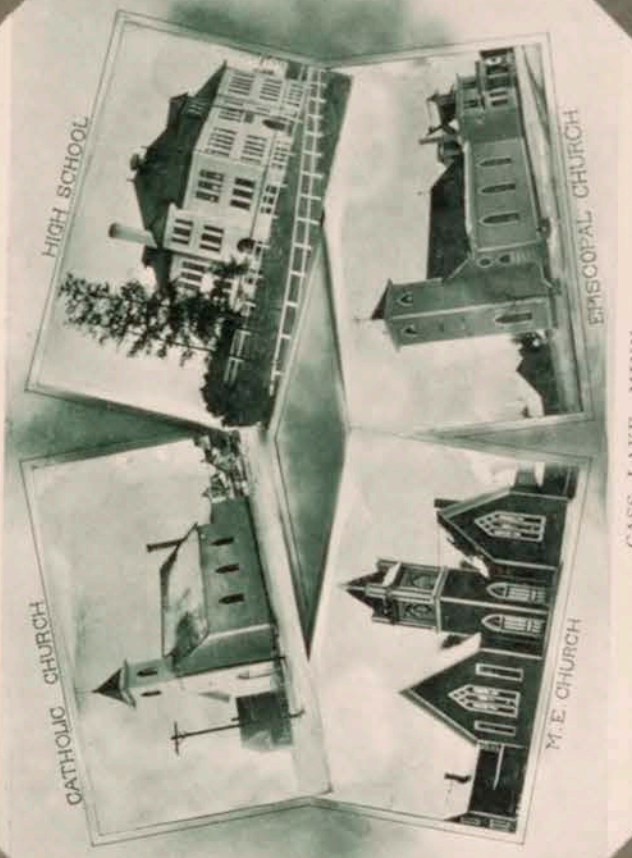
"GOPHER" or "NORTH STAR" STATE  
INDUSTRIES, ETC.  
Spring Wheat Iron Ore Dairying Salt  
AREA 83,380 SQUARE MILES  
Pop. 1,751,394



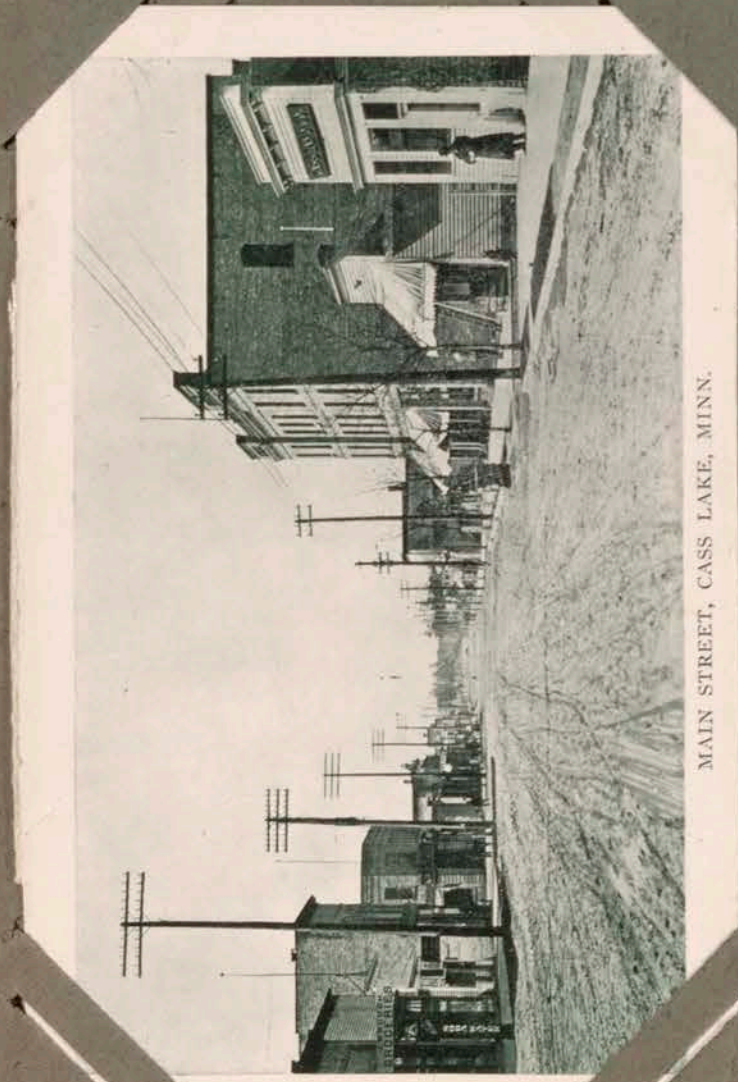
BOAT LANDING, CASS LAKE, MINN.  $\frac{1}{2}$  mile



MAIN STREET, CASS LAKE, MINN.



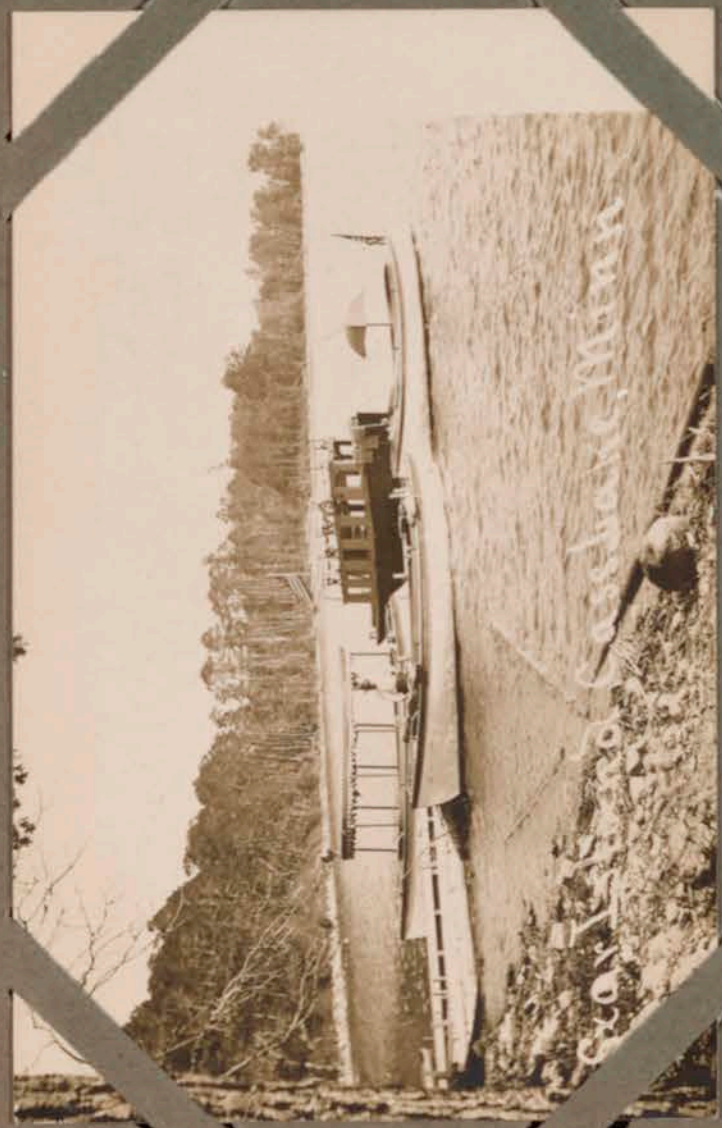
CASS LAKE, MINN.



MAIN STREET, CASS LAKE, MINN.

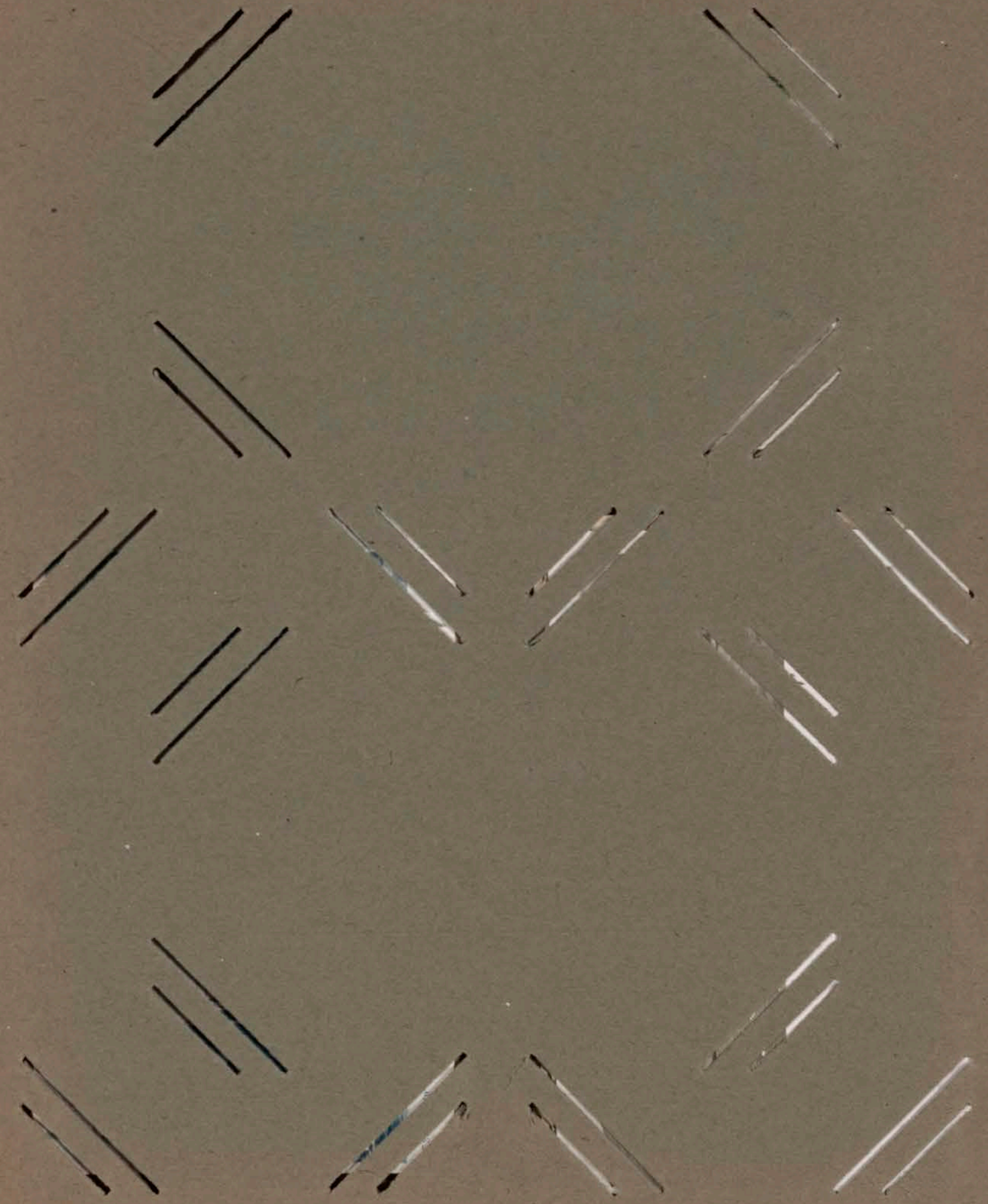
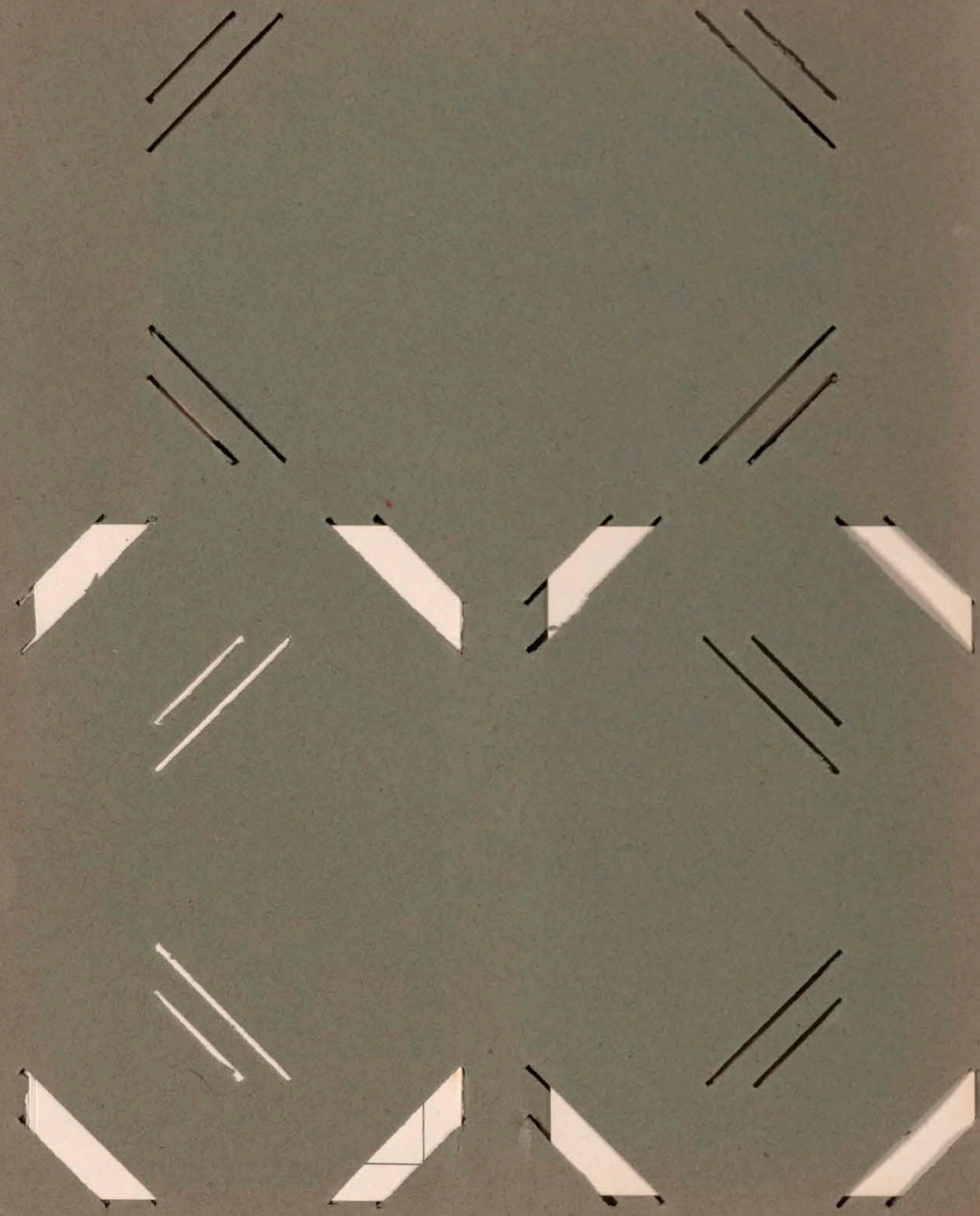


Indian Camp  
Cass Lake, Minn.



BOAT LANDING, CASS LAKE, MINN.



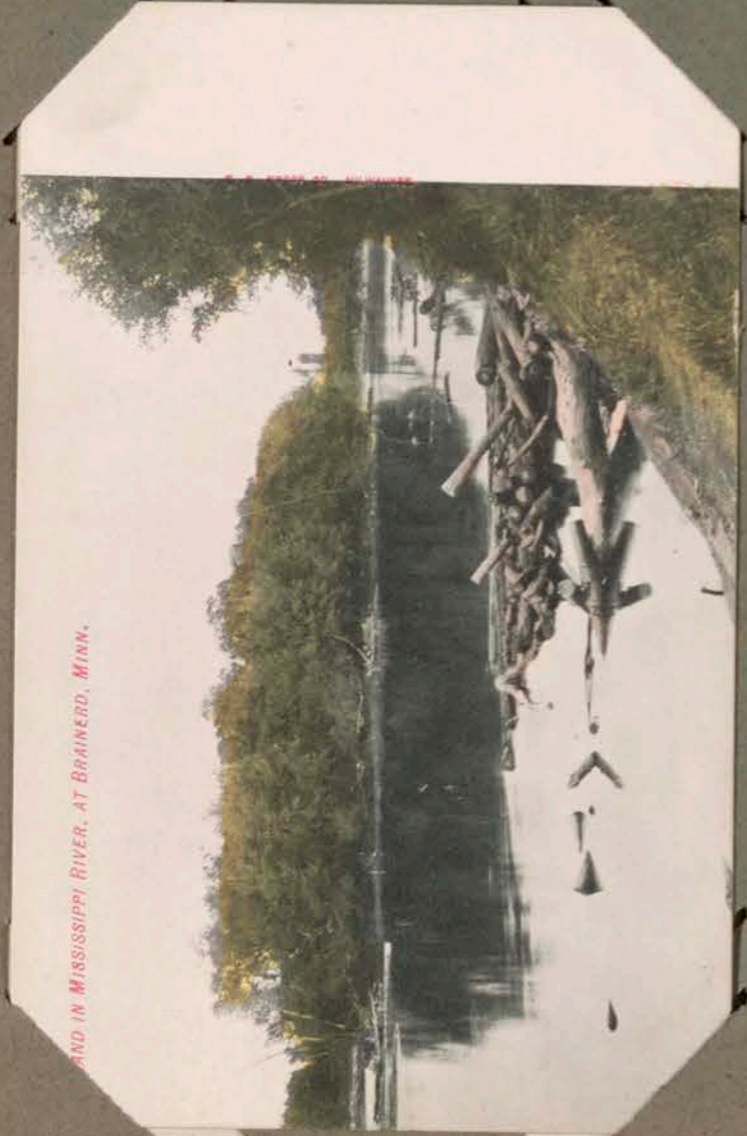




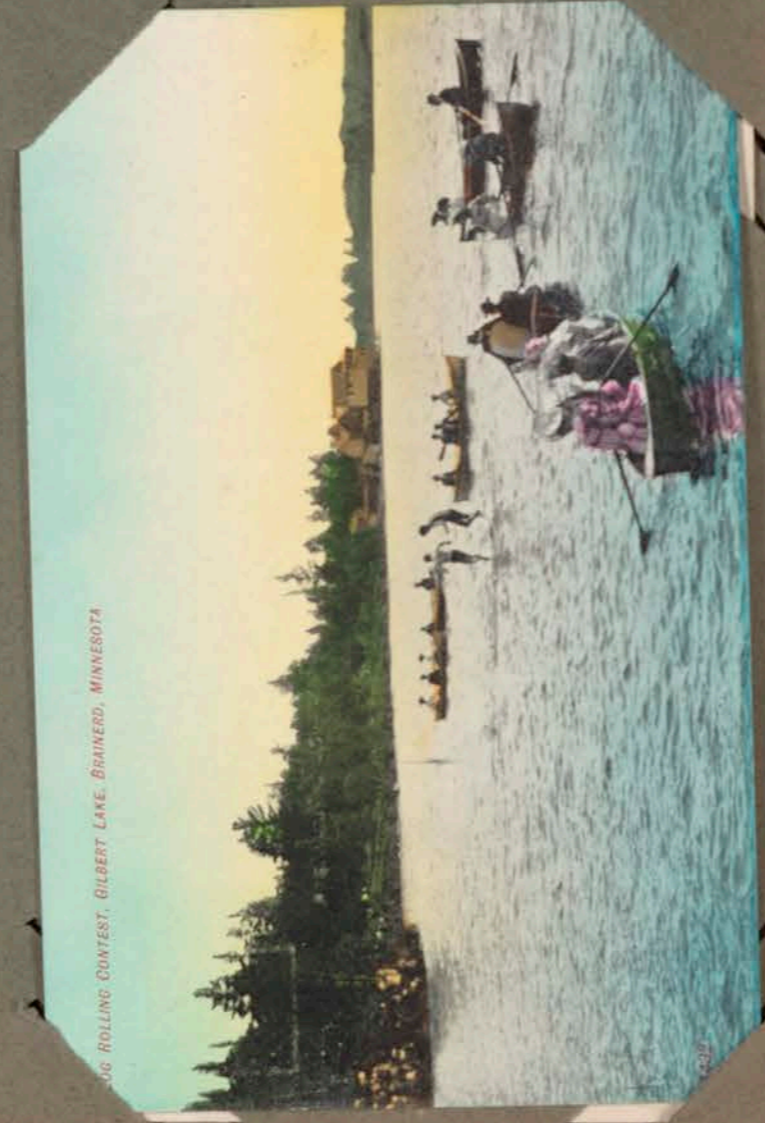
WASHINGTON HIGH SCHOOL  
BRainerd, MINN.



Looking South on Third Street, Wadena, Minn.



Log Raft on Mississippi River, at Brainerd, Minn.

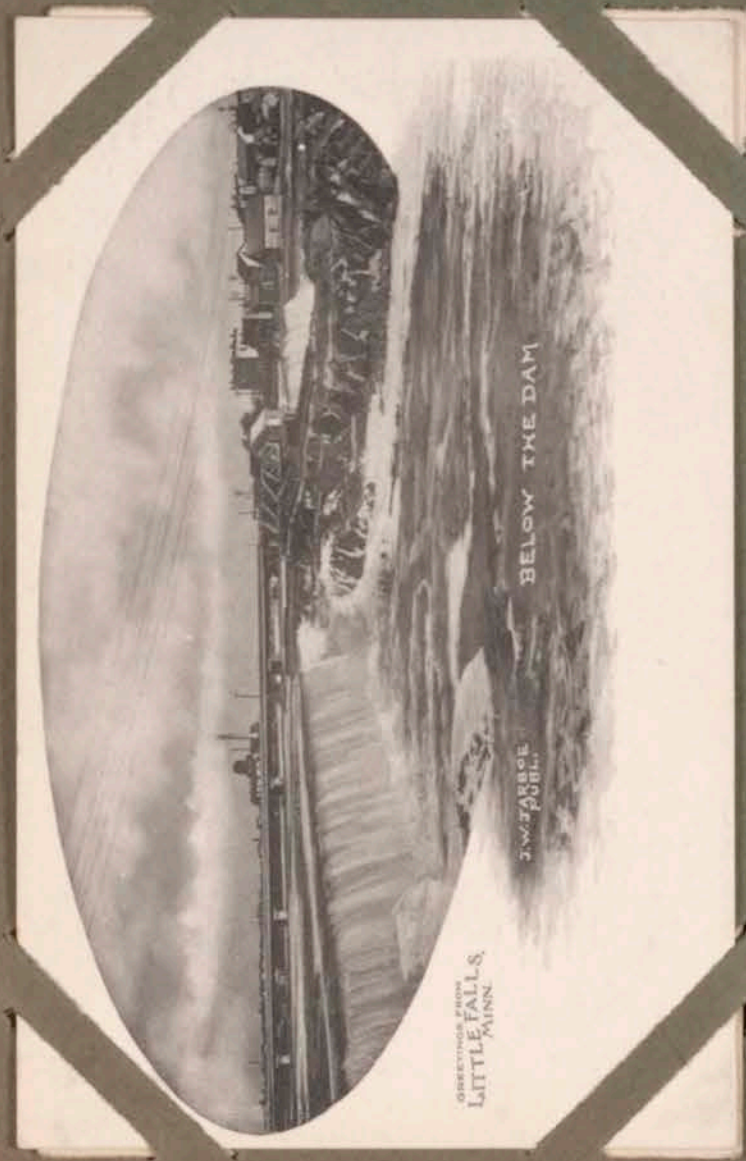
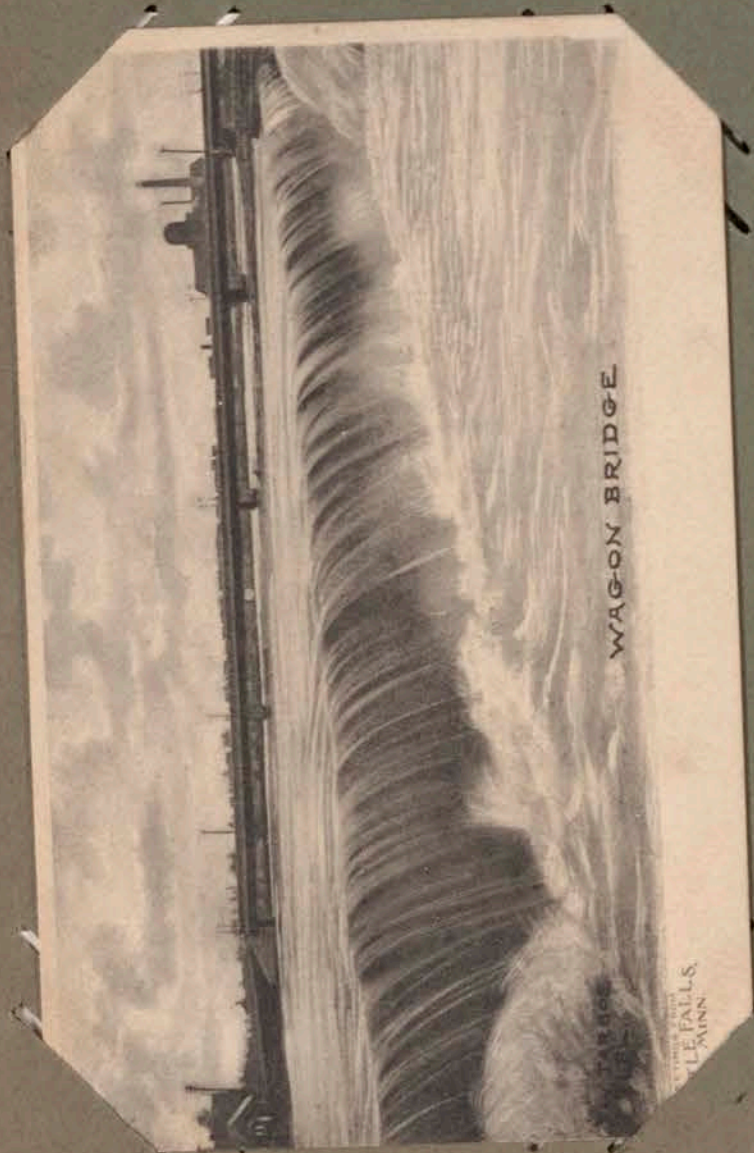


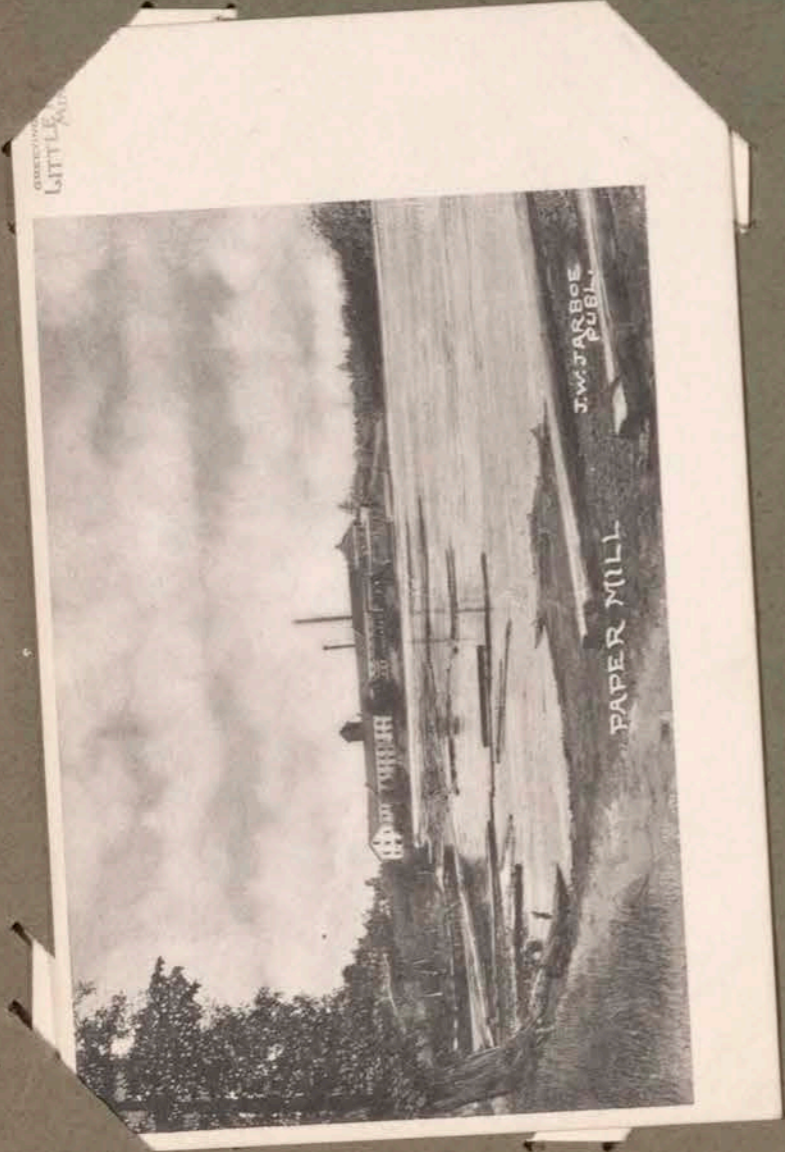
REGATTA ON GILBERT LAKE, BRainerd, MINNESOTA



Catholic Church and Parsonage, Wadena, Minn.

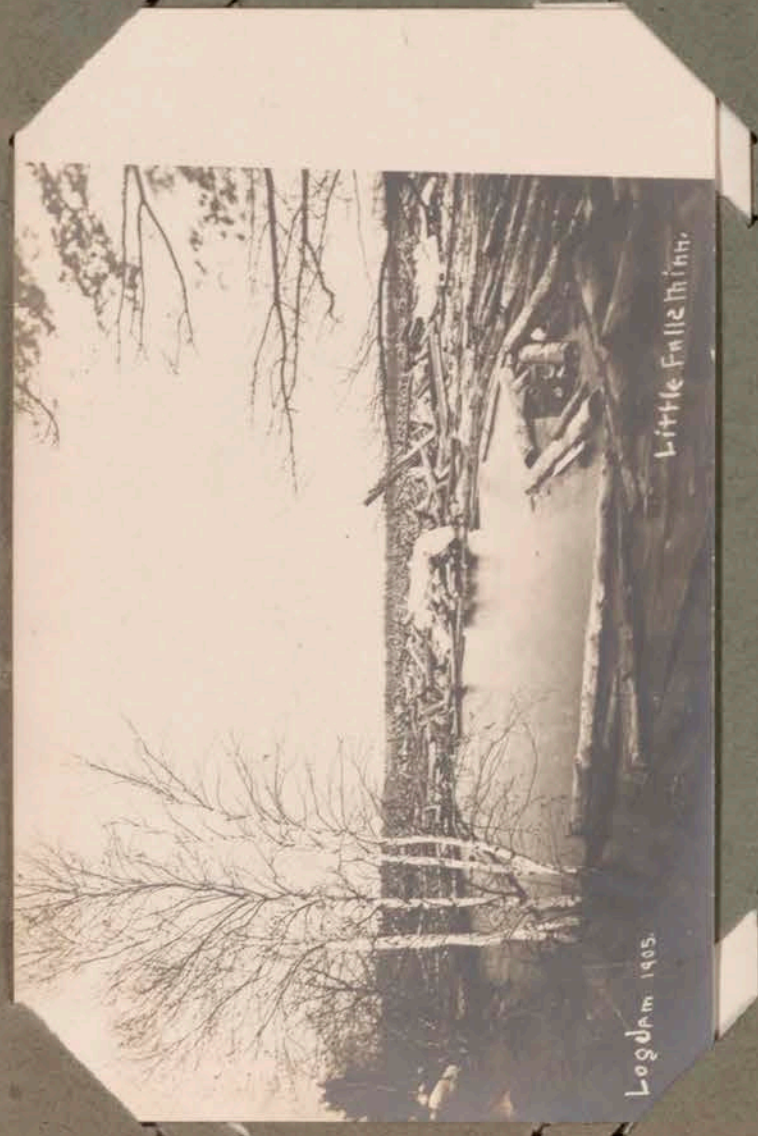








The Island



Logdam 1905

Little Falls Minn.

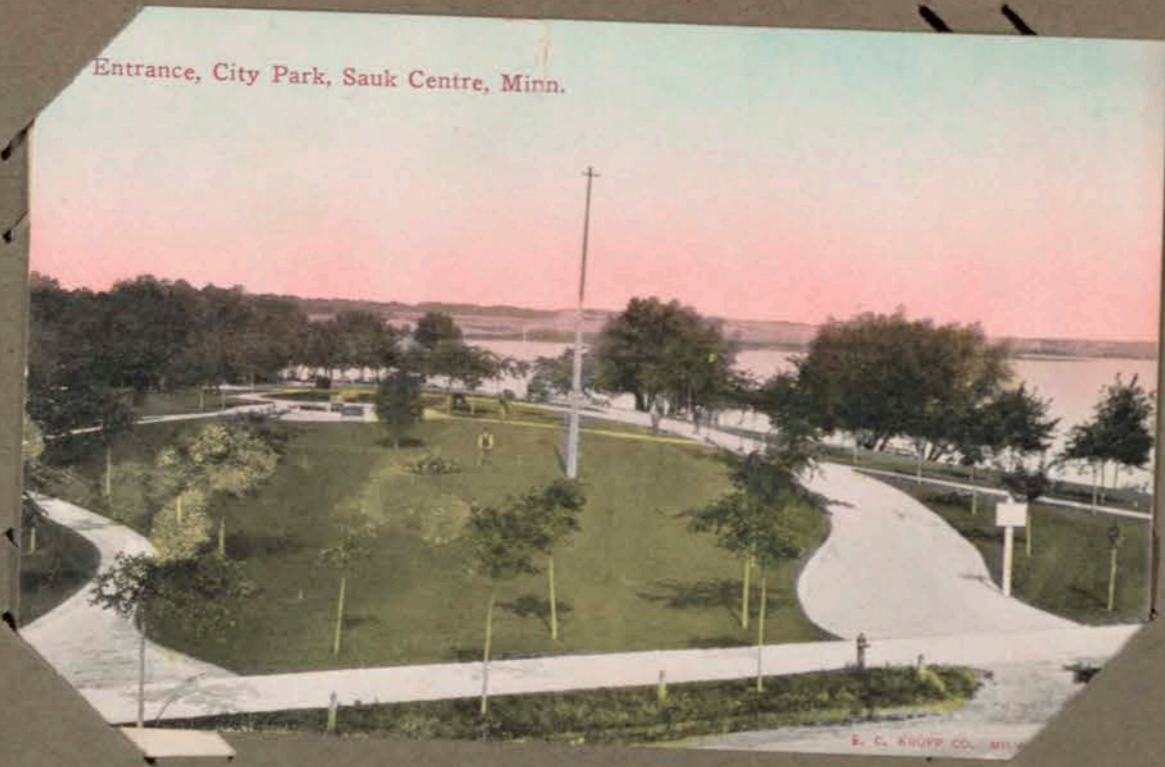
THIS SIDE

PLACE  
HERE STAMP



SAUK LAKE SAUK CENTRE IN DISTANCE





ONE CENT  
POSTAGE  
ALL OVER  
THE  
WORLD

**MAIL CARD.**

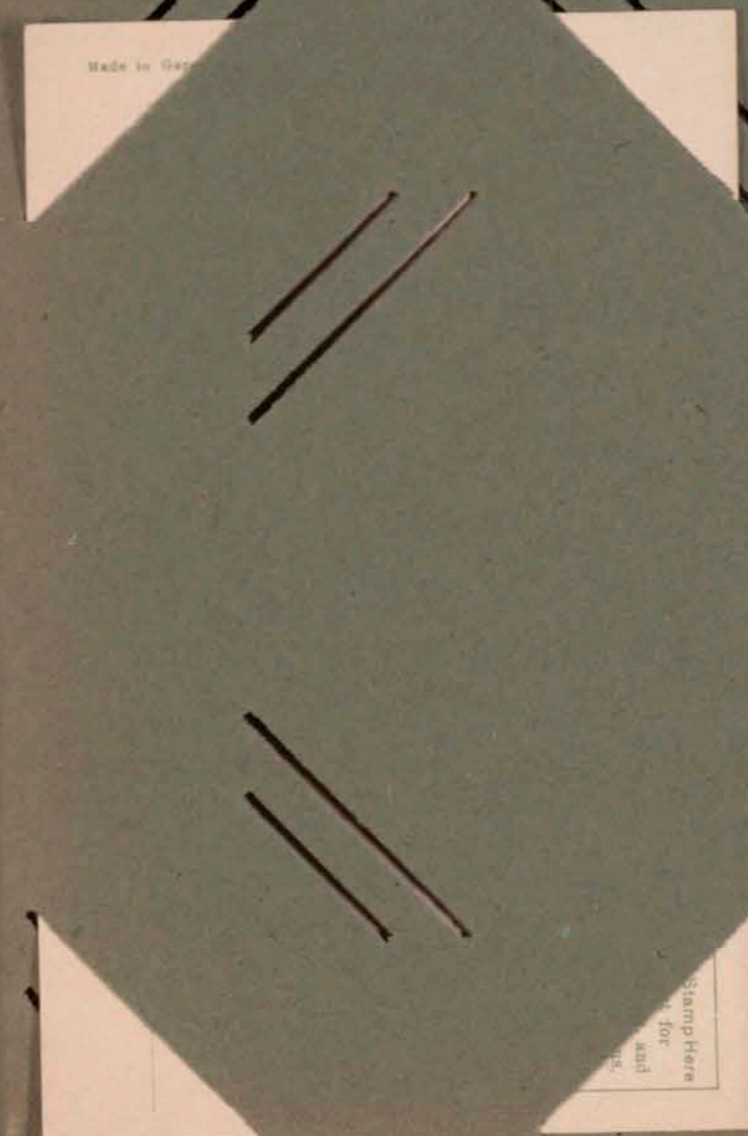
WRITE ON BACK OF THIS CARD ONLY YOUR NAME AND ADDRESS.  
PUT RUBBER-BANDS AROUND FOLDED CARD

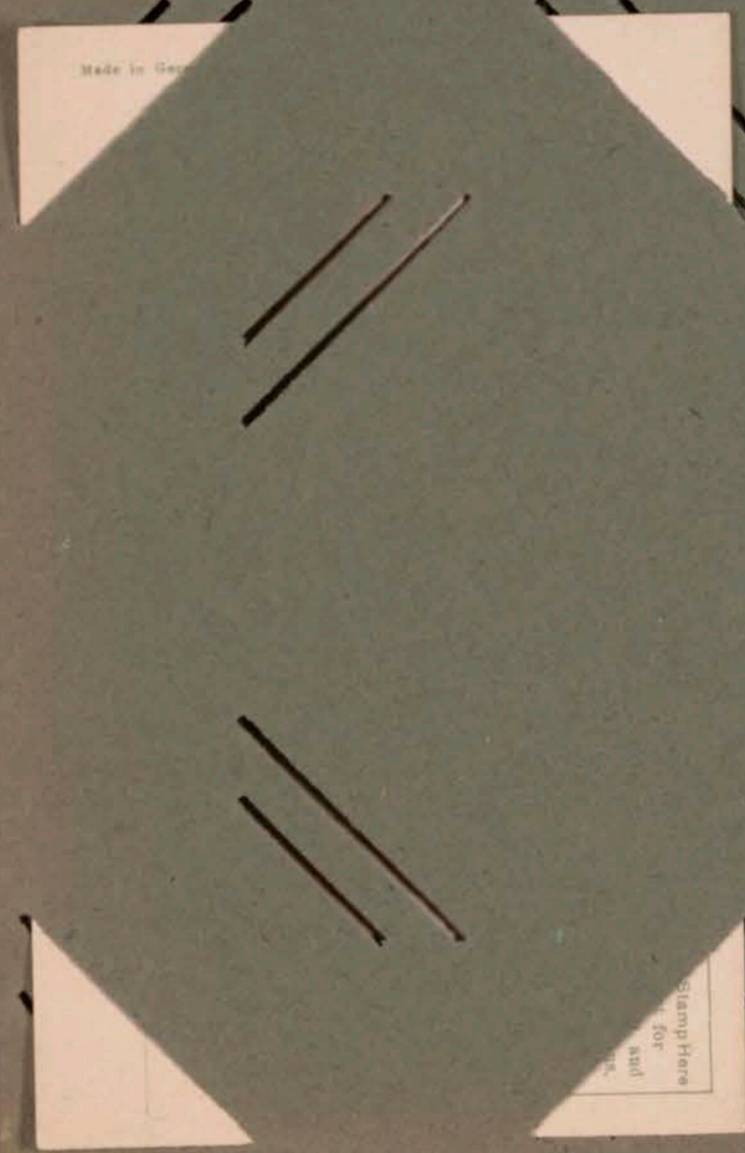
PRINTED MATTER.

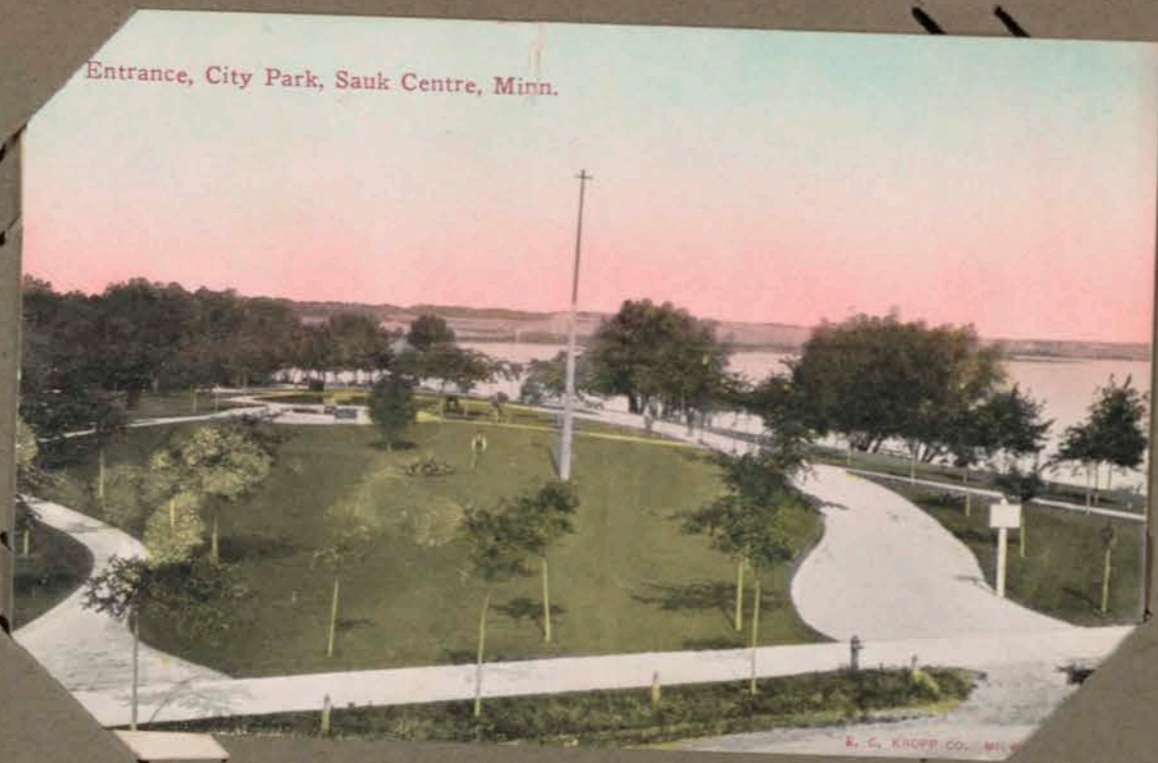
A. M. SIMON, New York. Made in Germany.

12 604

THIS SIDE IS EXCLUSIVELY FOR THE ADDRESS







Entrance, City Park, Sauk Centre, Minn.

K. S. KROPP CO. MILWAUKEE



CITY PARK SAUK CENTRE MINN.



DESIGNED BY H. H. ...

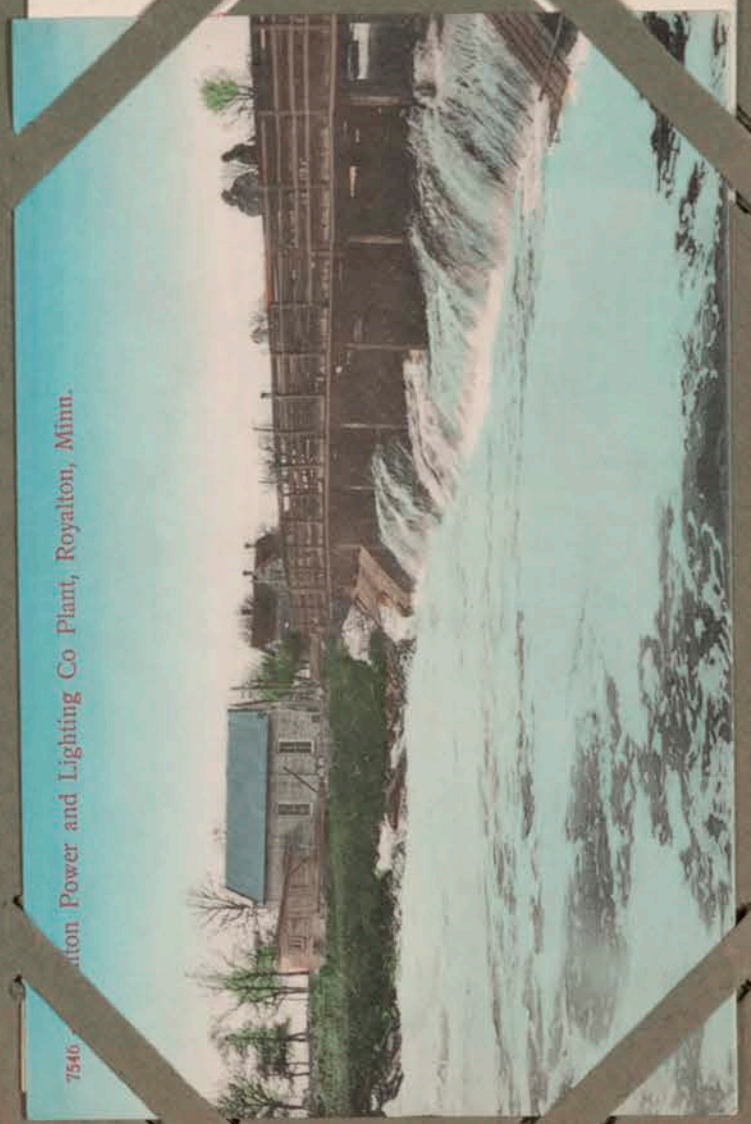
ONE CENT POSTAGE ALL OVER THE WORLD



PRINTED MATTER. MA  
WRITE ON BACK OF PUT RUB  
THIS SIDE IS EXCLUSIVELY FOR  
A. M. Simon, New York, Made in Germany. 13 506



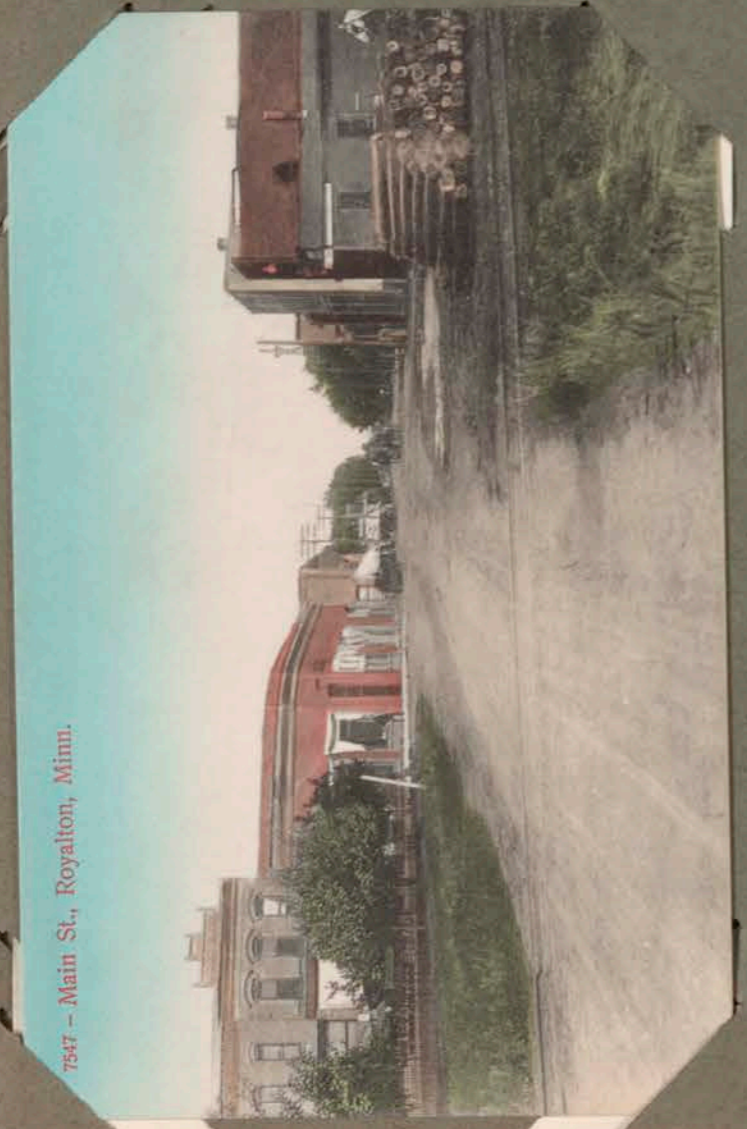
Greetings from  
Sauk Centre, Minn.



7543 - Soo Railroad Bridge near Royalton, Minn.



7547 - Main St., Royalton, Minn.



7506

abl. by E.

ny



