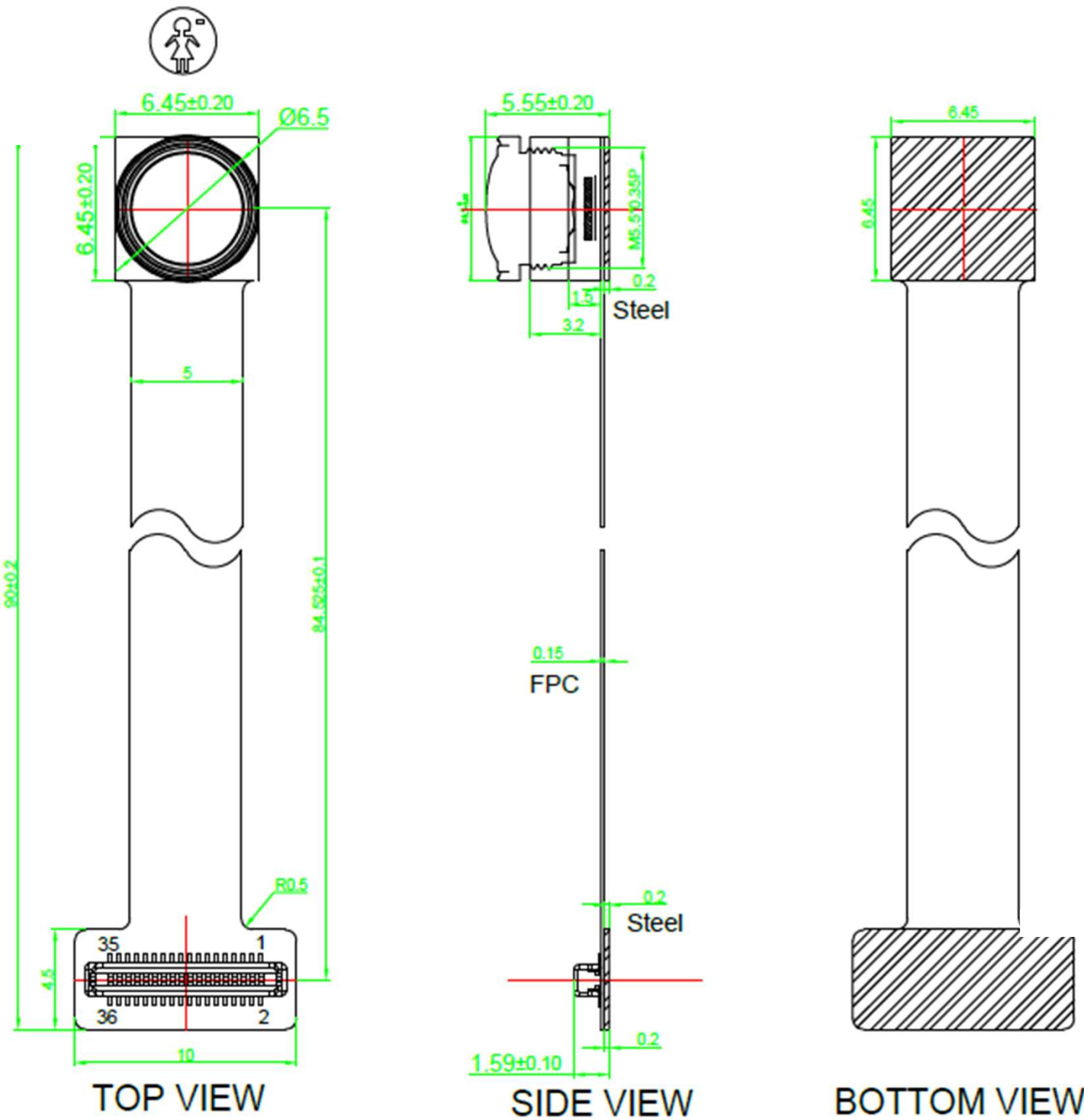


# MODALAI, INC. M0014

## OV7251 VGA Sensor for VOXL® Tracking



NO.	SYMBOL	NO.	SYMBOL
1	GND	2	GND
3	NC	4	NC
5	SDA	6	DOVDD1.8V
7	SCL	8	NC
9	RST_0	10	XCLK
11	GND	12	GND
13	MCP	14	STROBE
15	MCN	16	NC
17	MDP	18	NC
19	MDN	20	AVDD2.8V
21	GND	22	GND
23	NC	24	NC
25	NC	26	FSIN
27	NC	28	NC
29	NC	30	NC
31	GND	32	GND
33	NC	34	NC
35	NC	36	GND

THIRD ANGLE PROJECTION	
UNLESS OTHERWISE SPECIFIED	
DIMENSION UNITS ARE AS NOTED/PER NOTE 2 AND APPLY AFTER SURFACE TREATMENT	
TOLERANCES	
LINEAR	ANGULAR
MM	INCHES
X +/- 2.5	X +/- .1
X.X +/- 0.76	X.X +/- .03
X.XX +/- 0.25	X.XX +/- .010
EXCL OF SHEET METAL FLANGES +/- 0 DEG 30'	
HOLE DIAMETERS	
MM	INCHES
0.34 - 6.35 +0.13 - 0.03	.013 - .250 +.005 - .001
6.37 - 12.70 +0.15 - 0.03	.251 - .500 +.006 - .001
12.72 - 25.40 +0.25 - 0.03	.501 - 1.000 +.010 - .001

1 INTERPRET DRAWING PER ASME Y14.100.  
 2 INTERPRET DIMENSIONS AND TOLERANCES PER ASME Y14.5-2009.  
 3 ALL DIMENSIONS IN MILLIMETERS. INCHES WHERE INDICATED.  
 POSSIBLE MIXED DIMENSIONS WITHIN A SINGLE DRAWING.  
 4 ALL MATERIALS AND PROCESSES USED TO MANUFACTURE THIS COMPONENT SHALL COMPLY WITH THE EUROPEAN UNION DIRECTIVE 2011/65/EU ON THE RESTRICTION OF THE USE OF CERTAIN HAZARDOUS SUBSTANCES IN ELECTRICAL AND ELECTRONIC EQUIPMENT (RoHS).

LENS SIZE:	1/3.06 Inch	CMOS SENSOR:	OV7251
EFL:	0.83mm	Array Size:	640*480
F. NO:	2.0	DVDD:	Internal (1.5V)
FOV(DxHxV):	166° x 133° x 100°	DOVDD:	1.8V±0.1V
Distortion:	-20.77%	AVDD:	2.8V±0.1V

		<b>M0014</b>	
		MODALAI INC 10855 Sorrento Valley Rd Suite 2, San Diego CA 92121	
WWW.MODALAI.COM	SIZE B	DWG NO MDOC-M0014	REV A
MODALAI PROPRIETARY	11/02/2021	SHEET	1 OF 1