

PEARSON

SEMI — BUNGALOWS



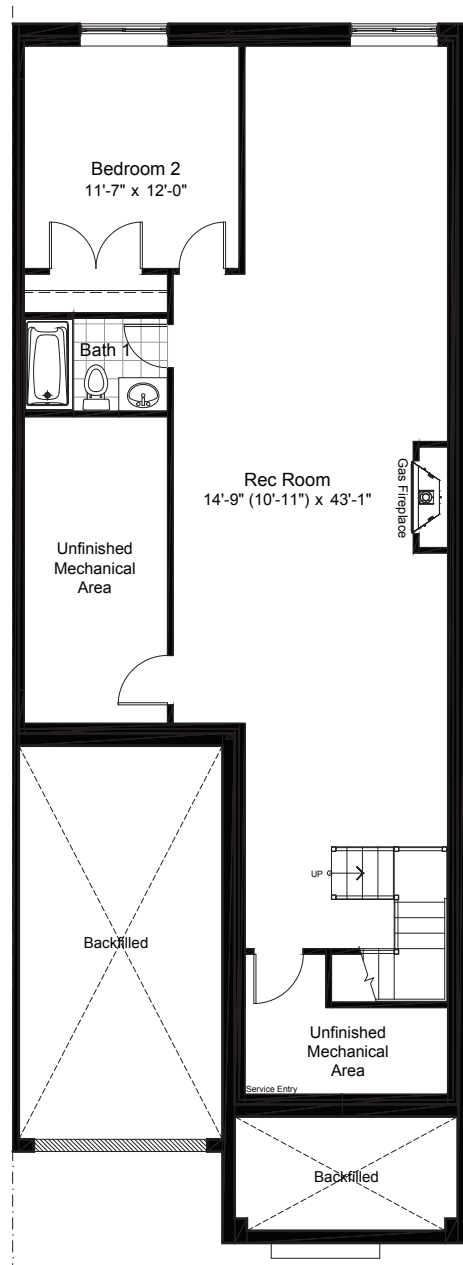
2130 SQ.FT. 2 BED 2.5 BATH
INCLUDES 995 SQ.FT. FINISHED BASEMENT



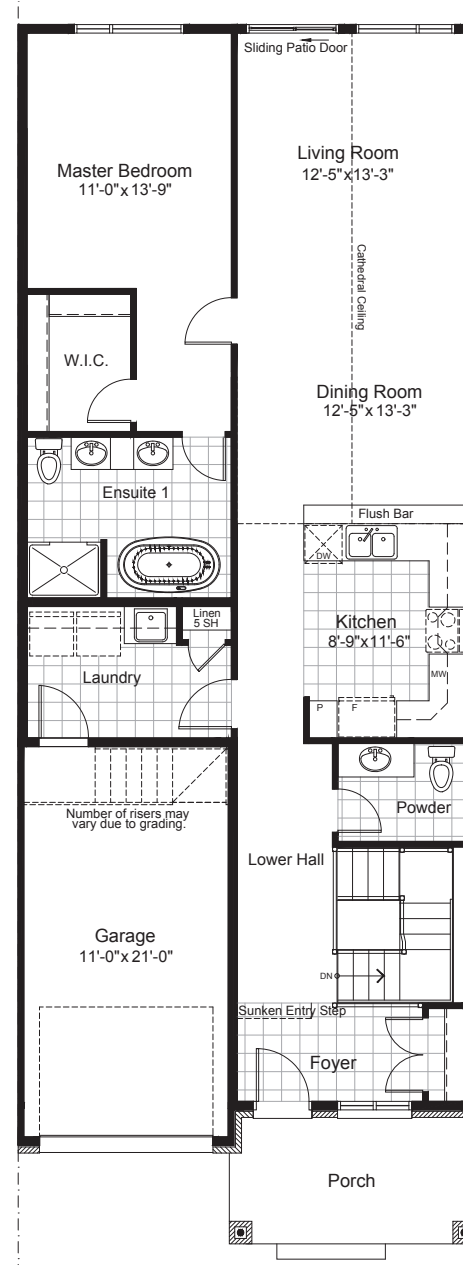
PEARSON

SEMI — BUNGALOWS

2130 SQ.FT. 2 BED 2.5 BATH
 INCLUDES 995 SQ.FT. FINISHED BASEMENT



basement



ground

DISCLAIMER Materials, specifications and floor plans are subject to change without notice. All dimensions are approximate and may not be to scale. Actual usable floor space may vary from the stated floor area. Exterior elevations are artistic concepts only: window size and design, roof pitch and brick detail may vary from plan. Layout for kitchen, furnace, HWT and laundry tub may vary from plan. Vertical and horizontal bulkheads, which are not shown on plan may be required for structural plumbing and ventilation runs. E. & O.E. Issued: November 2019