


Tai 12

ENGRAVE YOUR AUTOGRAPH
ONTO THE WORLD

This Project is currently under process of Environment Impact Assessment Report (EIR). All information as shown here in and advertisements, such as numbers, types, materials, layouts, masterplan, tones, colours, details, and information about the site, dominions, units and the Project, and etc. are approximation to be used as guideline for consideration and subject to contract, and the project owner reserves its right to change without prior notice. All rights reserved. Reproduction, photocopying, modification, alteration or publishing hereof without permission is prohibited.



Be the first to claim your living space
at the most distinctive lifestyle condominium
in the heart of Sathorn.

An oasis of inspiration in the heart of Sathorn

In a business district that resembles a dull concrete jungle, fast-paced living makes people forget about their inspirations. This drives us to create TAIT 12, an oasis of inspiration for people who never stop seeking for new success; people who are always on a mission; people who are filled with passion and joy in everything that they do; people whose creations become aspirations for others, like the elegant moose who roams free with boundless energy, ready to live life that breaks the boundaries of imagination.



“Inspiration is everywhere”

is the thinking behind TAIT 12, the most distinctive condominium
in the heart of Sathorn. Nestled amidst urban lifestyle offerings,
where every morning is fueled with new motivations
to seal your success.

**ENGRAVE YOUR AUTOGRAPH
ONTO THE WORLD**

This Project is currently under process of Environment Impact Assessment Report (EIA). All information as shown here in and advertisements, such as numbers, types, materials, layouts, masterplan, tones, colours, details, and information about the condominium units and the Project, and etc. are approximation to be used as guideline for consideration and subject to contract, and the project owner reserves its right to change without prior notice. All rights reserved. Reproduction, photocopying, modification, alteration or publishing hereof without permission is prohibited.



The new experiences that will redefine your passion

Sathorn isn't merely a thriving business district, but a hub of inspirations. TAIT 12's perfect location in the epicentre lets you explore the diverse nationalities, cultures and experiences that will redefine your passion and capture your inspiration.



Invigorating facilities zone specially designed for the ultimate relaxation

If inspiration is the air that we breathe, every second spent at TAIT 12 will be an inspired one. Starting from the green space that embraces you, the invigorating energy zone with facilities to reenergize and relax, and the breathtaking panoramic views of the city that provide another level of unparalleled living.



A life surrounded by inspirations


Inspirations are not only limited to living at TAIT 12. Its perfect location in the epicenter lets you explore various lifestyle offerings that will redefine your passion, capture your inspiration and fulfil every moment of living.



International
lifestyle
scene



Core central
business
district



TAIT 12, the epicenter of unparalleled living
in the heart of Sathorn, where every morning is fueled
with new motivations to seal your success.

Location

Sathorn Soi 12 just keep
on getting better.
there's a feast of restaurant and,
more and more keep springing up.



SILOM RD.

SILOM SOI 9

NARADHIWAT RAJANAGARINDRA RD.

CHARM
EATERY
AND BAR
BUNKER

OPUS
WINE BAR

LUKA CAFE

KAI
NEW ZEALAND

LE CAFE DES
STAGIAIRES
BANGKOK

ROCKET
COFFEE BAR

SATHORN 12

TAIT 12

HEALTH LAND

SUPANNIGA
EATING ROOM

HANAKARUTA

MARCEL

REVOLUCION

BLUE PARROT

(NOT JUST)
ANOTHER CUP

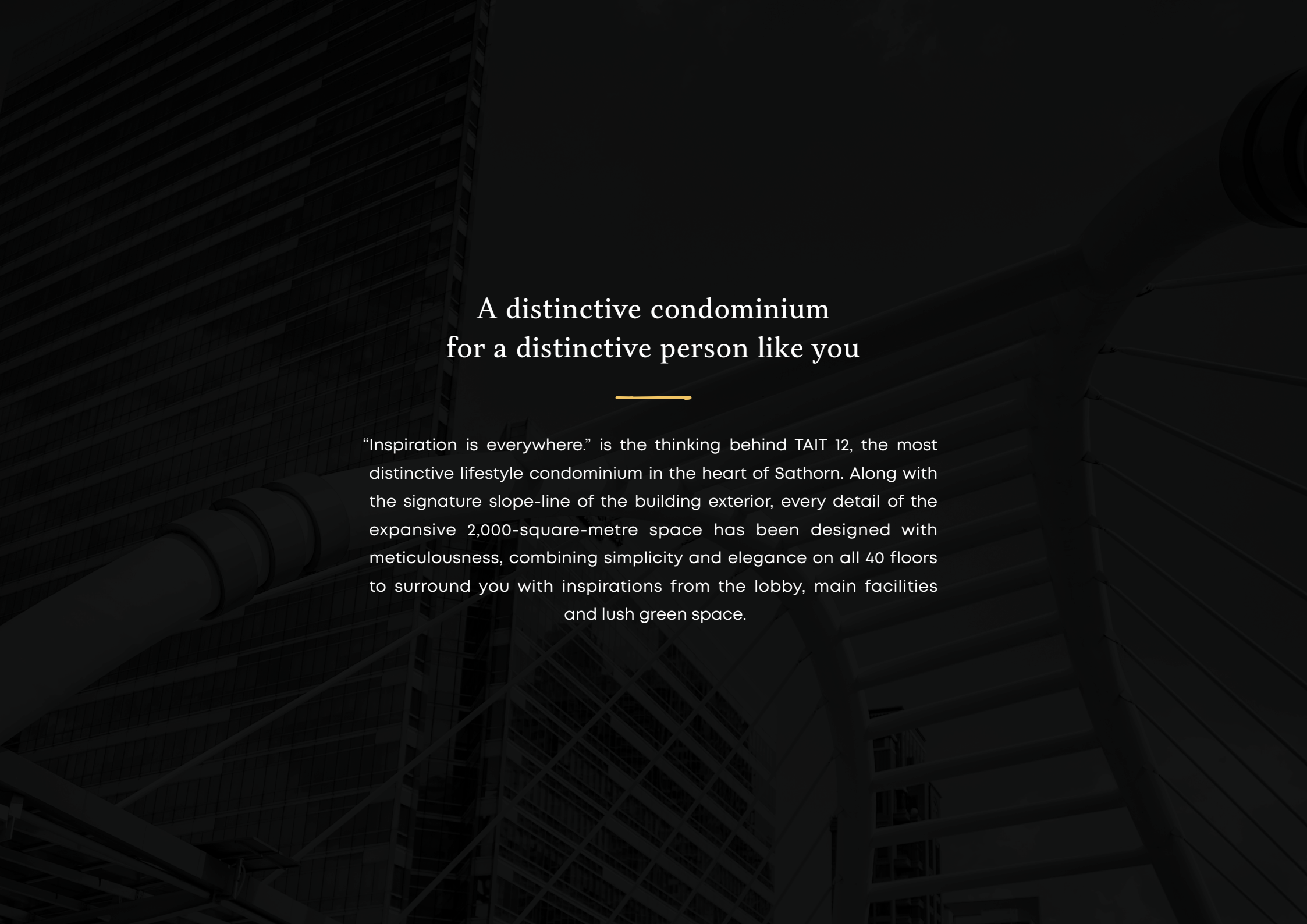
SORRENTO

THE HOUSE
ON SATHORN

WOOBAR STARBUCKS

DEAN &
DELUCA

SATHORN RD.



A distinctive condominium for a distinctive person like you

“Inspiration is everywhere.” is the thinking behind TAIT 12, the most distinctive lifestyle condominium in the heart of Sathorn. Along with the signature slope-line of the building exterior, every detail of the expansive 2,000-square-metre space has been designed with meticulousness, combining simplicity and elegance on all 40 floors to surround you with inspirations from the lobby, main facilities and lush green space.



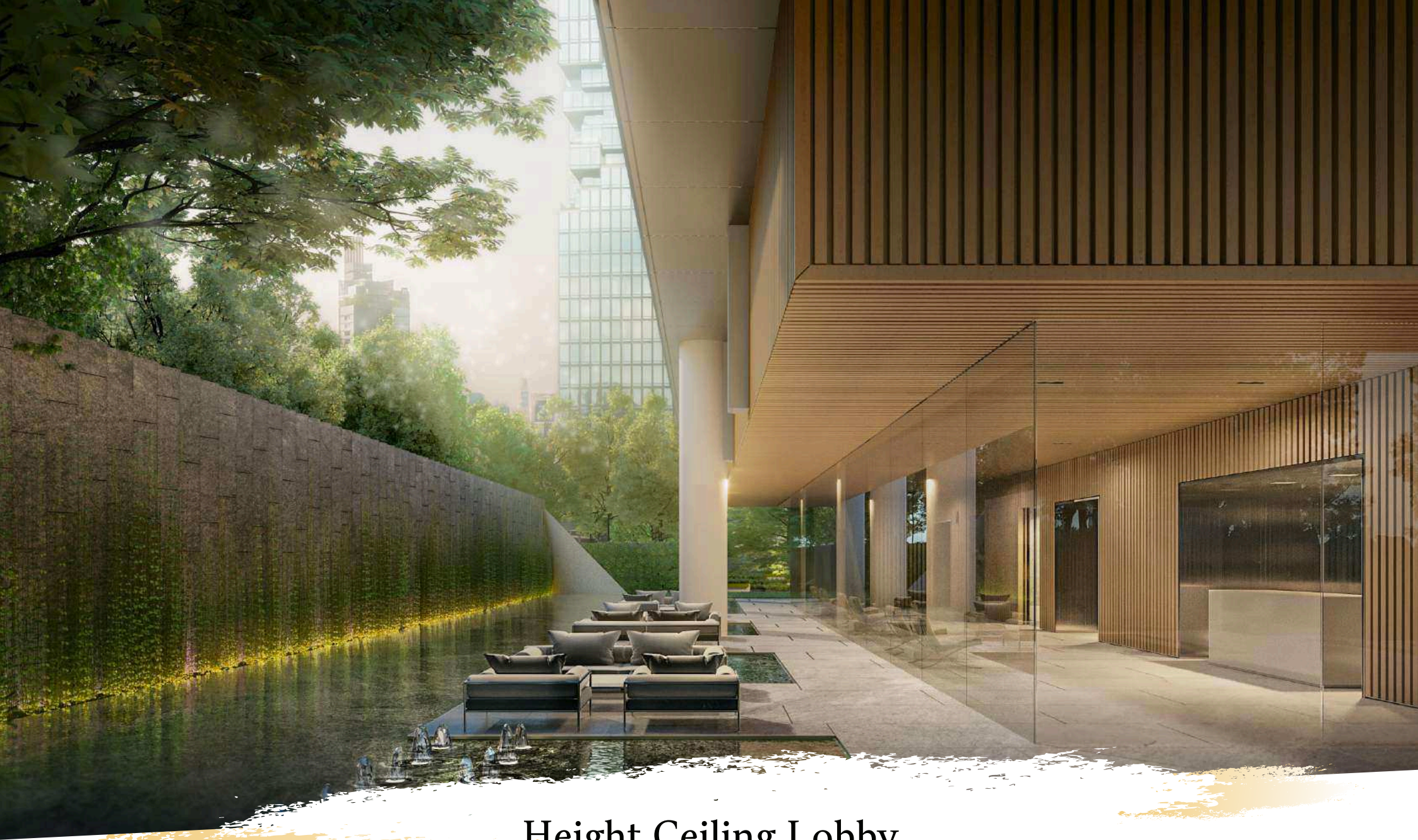
Garden Entrance

Garden entrance with covered vehicle drop-off



Double Height Space Welcoming Entrance

Double volume ceiling main entrance



Height Ceiling Lobby

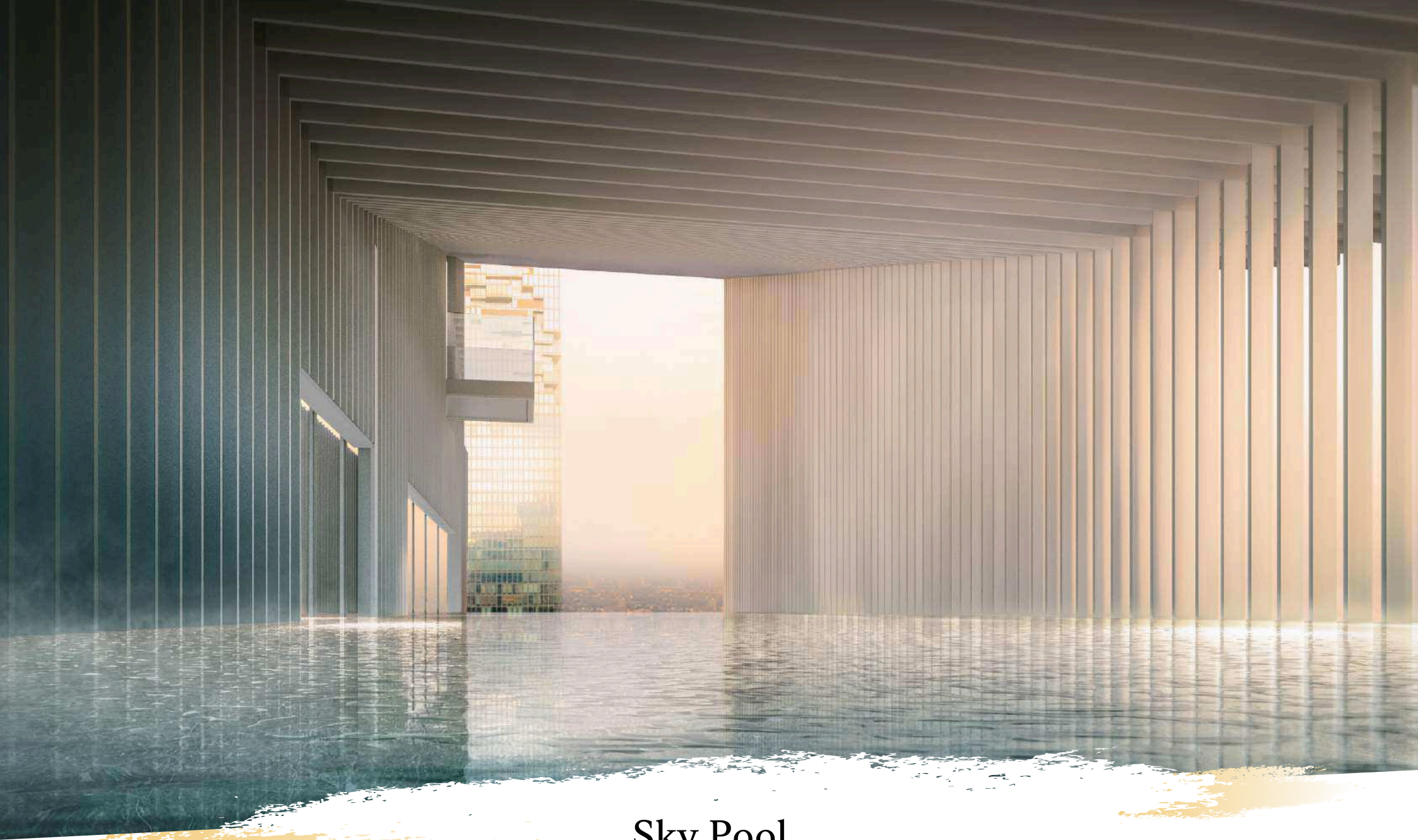
Height Ceiling Lobby with outdoor patio and landscape

The Invigorating Crown Jewel Zone

is equipped with state-of-the-art facilities amidst breathtaking panoramic views of the city. Every space is connected in one seamless flow, so the residents can build relationships and exchange their creativity:

- Gym dedicated high energy zone for functional training and private studio.
 - Cavern pool **calmness** and serenity surrounds you as if swimming in a cavern.
 - Sky terrace garden **perfect** for small gatherings with friends and families.
 - Multi-function / **private** dining area catered to the residences with stunning view of Bangkok's skyline.
-

And much more to endlessly inspire you.



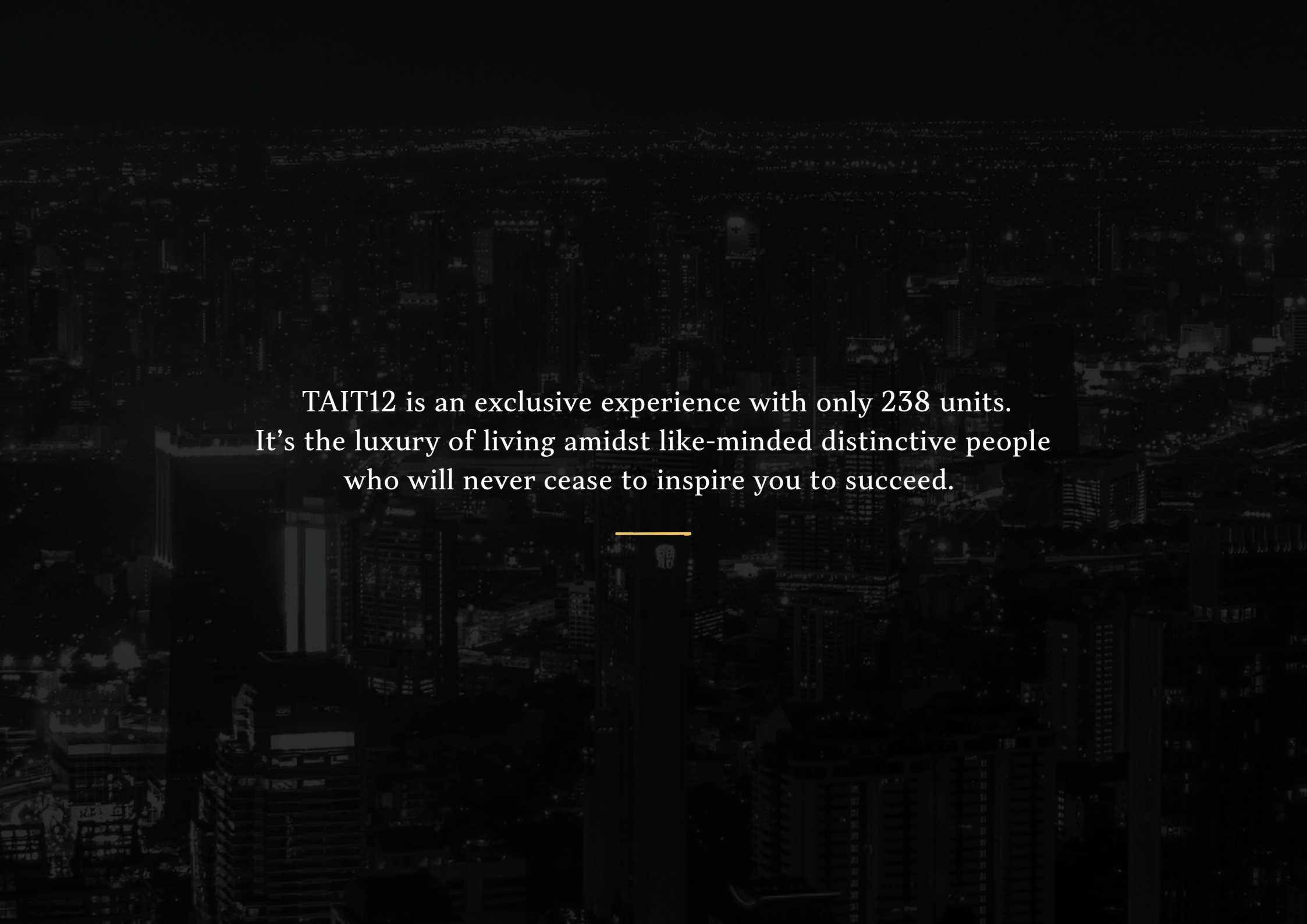
Sky Pool

Infinite edge non-chlorine filtration system pool with children's pool



Amphitheater Lounge

This Project is currently under process of Environment Impact Assessment Report (EIA). All information as shown here in and advertisements, such as numbers, types, materials, layouts, masterplan, tones, colours, details, and information about the condominium units and the Project, and etc. are approximation to be used as guideline for consideration and subject to contract, and the project owner reserves its right to change without prior notice. All rights reserved. Reproduction, photocopying, modification, alteration or publishing hereof without permission is prohibited.



TAIT12 is an exclusive experience with only 238 units.
It's the luxury of living amidst like-minded distinctive people
who will never cease to inspire you to succeed.



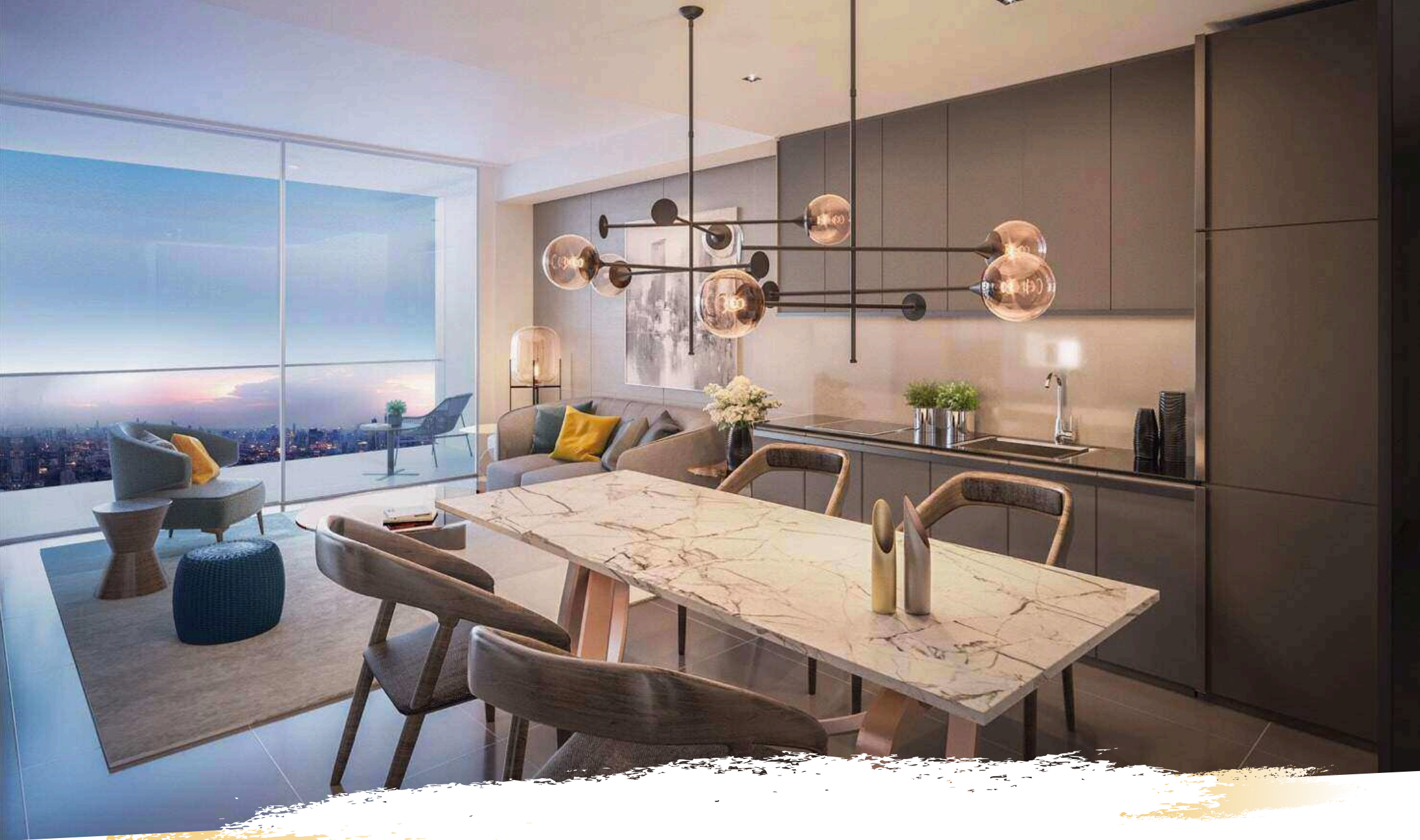
Simulated Interior Impression

This Project is currently under process of Environment Impact Assessment Report (EIA). All information as shown here in and advertisements, such as numbers, types, materials, layouts, masterplan, tones, colours, details, and information about the condominium units and the Project, and etc. are approximation to be used as guideline for consideration and subject to contract, and the project owner reserves its right to change without prior notice. All rights reserved. Reproduction, photocopying, modification, alteration or publishing hereof without permission is prohibited.



Simulated Interior Impression

This Project is currently under process of Environment Impact Assessment Report (EIA). All information as shown here in and advertisements, such as numbers, types, materials, layouts, masterplan, tones, colours, details, and information about the condominium units and the Project, and etc. are approximation to be used as guideline for consideration and subject to contract, and the project owner reserves its right to change without prior notice. All rights reserved. Reproduction, photocopying, modification, alteration or publishing hereof without permission is prohibited.



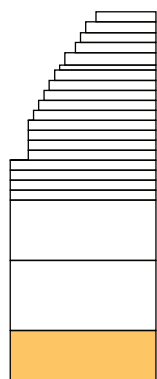
Simulated Interior Impression

This Project is currently under process of Environment Impact Assessment Report (EIA). All information as shown here in and advertisements, such as numbers, types, materials, layouts, masterplan, tones, colours, details, and information about the condominium units and the Project, and etc. are approximation to be used as guideline for consideration and subject to contract, and the project owner reserves its right to change without prior notice. All rights reserved. Reproduction, photocopying, modification, alteration or publishing hereof without permission is prohibited.

Master Plan



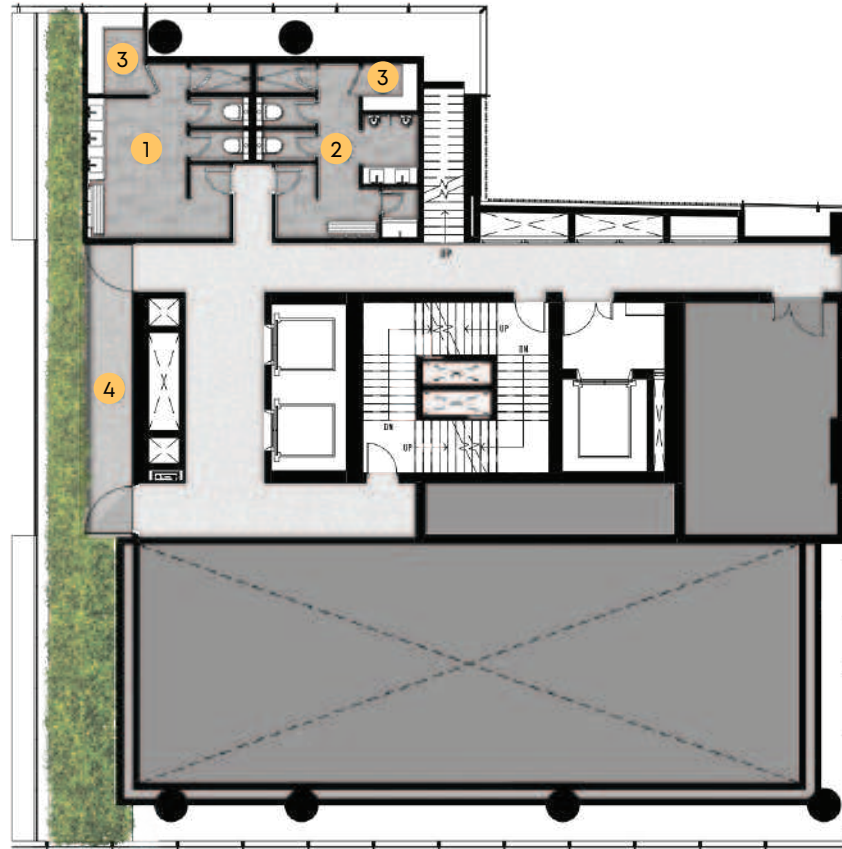
Ground Floor



1. DROP-OFF
2. OUTDOOR LOBBY
3. INDOOR LOBBY
4. LIFT LOBBY
5. MAILROOM
6. JURISTIC ROOM
7. GARDEN
8. PET LAWN
9. SERVICE LIFT
10. GARBAGE ROOM

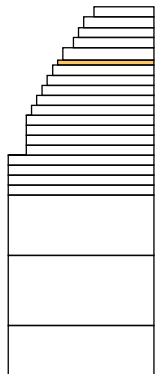


Master Plan



Facilities Floor

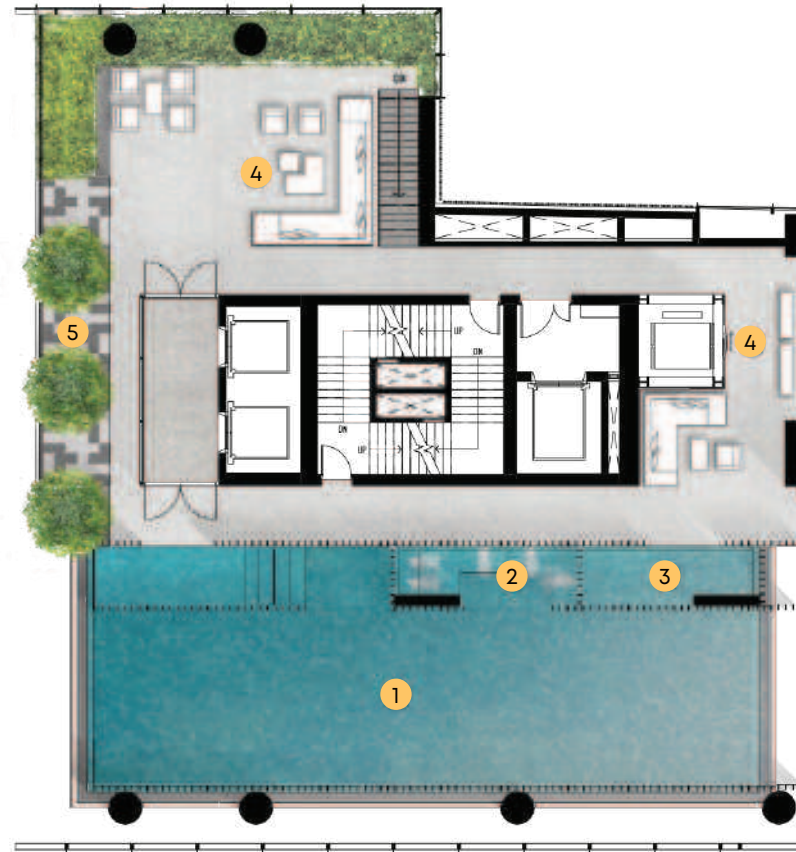
35th



1. WOMEN'S TOILET
2. MEN'S TOILET
3. STEAM ROOM
4. SKY GARDEN

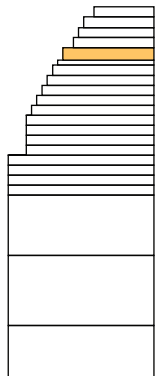


Master Plan



Facilities Floor

36th



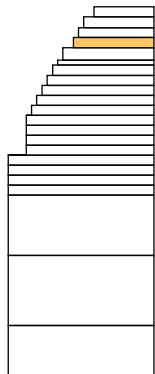
1. INFINTY EDGE SKY POOL
2. JACUZZI
3. KID'S POOL
4. SKY DECK
5. CABANA

Master Plan



Facilities Floor

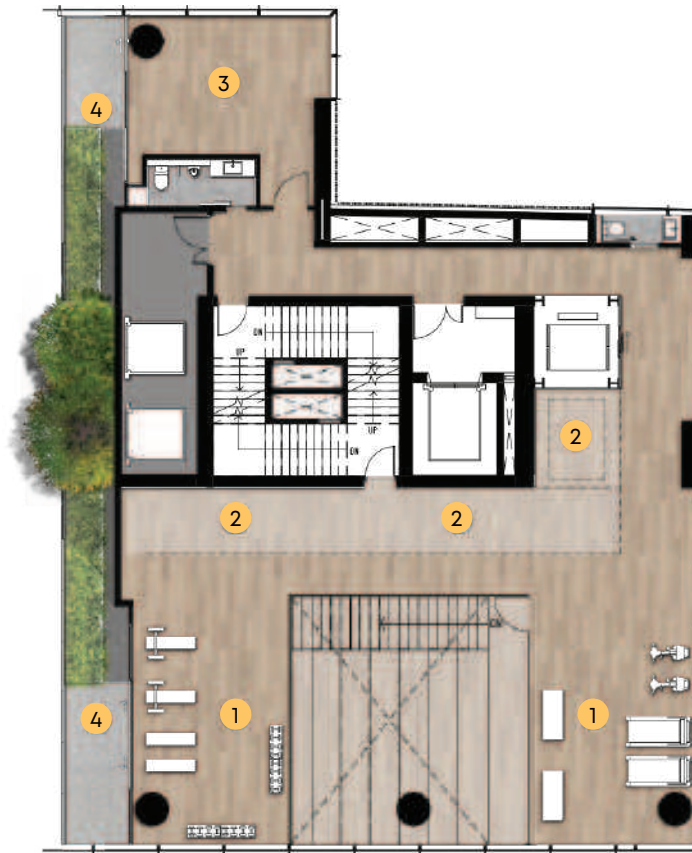
37th



1. SKY LOUNGE
2. LIBRARY & STUDY AREA
3. AMPHITHEATER
4. CAVERN VIEW POINT

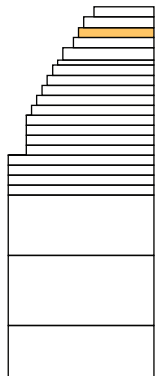


Master Plan



Facilities Floor

38th



- 1. SKY GYM
- 2. FUNCTIONAL TRAINING
- 3. MULTI-PURPOSE GYM STUDIO
- 4. SKY GARDEN

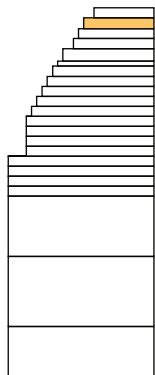


Master Plan



Facilities Floor

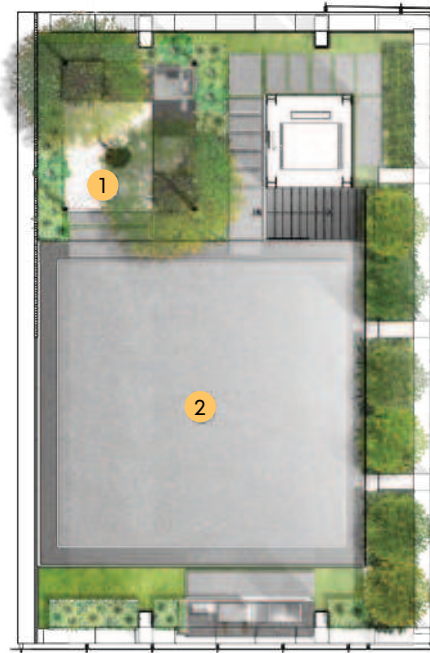
39th



- 1. PRIVATE DINING
- 2. PANTRY & WINE CELLAR
- 3. SKY GARDEN
- 4. WC

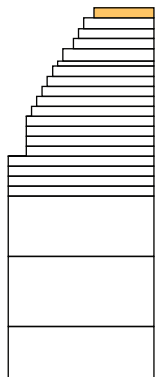


Master Plan




Facilities Floor

RF



- 1. PAVILION
- 2. ROOF OPEN AREA

An aerial night-time photograph of a modern, glass-clad skyscraper with a distinctive stepped, terraced design. The building features multiple levels of greenery and outdoor spaces, illuminated from within, making it stand out against the dark cityscape. It is surrounded by other urban buildings and streets, with some clouds visible in the upper left corner.

A life surrounded by inspirations

Inspirations are not only limited to living at TAIT 12. Its perfect location in the epicenter lets you explore various lifestyle offerings that will redefine your passion, capture your inspiration and fulfil every moment of living.

Development Name: TAIT 12

Developer: Raimon Land Sathorn Co., Ltd.

Product Type: Freehold Residential Condominium

No. of Storeys 40 Storeys

Consultants: Project Architect: A49 Ltd.
Interior Designer: IA49, Ltd.
Landscape Designer: SHMA Co., Ltd.
Structural Engineer: AE49 Ltd.
M&E Engineer: ME49 Ltd.

Total Land Area: 1-3-22.6 Rai (2,890.4 sqm.)

Total Number of Units: Approx. 238 units

Types of Units: 1 bedroom, 2 bedrooms, 2+1 bedrooms

Ceiling Height: Approx. 3.00 m in primary spaces
Approx. 3.15 m in primary spaces
for selected high zone units from 21st Floor

Common Facilities:

Ground floor Covered vehicle drop-off with landscape garden
Height Ceiling Lobby with outdoor patio and landscape*
Crown level wellness facilities with panoramic city views

- Infinite edge non-chlorine filtration system sky pool with children's pool
- Sky deck with Sunset Pavillion
- Approx. 200 sqm. Functional fitness centre with training studio
- Approx. 60 sqm. Amphitheater lounge
- Separated male & female steam room
- Study room with garden view
- Multi-function area
- Sky terrace



Wi-Fi hotspot
CCTV with 24 hours security monitoring system*
Floor specific access card system
Pet-friendly zone*
Electric Vehicle Charging Stations*

Services: Concierge*

Parking: Approx. 211 conventional car park lots*

Common Area Maintenance Fee: 110 Baht/ sqm (payable 12 months in advance)

Sinking Fund: 900 Baht/ sqm (One time payment upon ownership transfer)

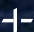
Construction Commencement: Q2 2019

Expected Completion: Q3 2022 (approx.)

* Note : This project is currently under process of Environment Impact Assessment Report (EIA). Numbers and types of condominium unit, materials, details and information about the Project including electric vehicle charging point are subject to change due to EIA requirements, terms and conditions of the contract including rules and regulations of the Condominium Juristic Person and fees imposed by the Condominium Juristic Person without prior notice. Electric vehicle owners shall be responsible for own electric vehicle charger and electricity charging fee. All information as shown herein and advertisements are approximation to be used as guideline for consideration. The project owner reserves its right to change without prior notice. All rights reserved. Reproduction, photocopying, modification, alteration or publishing of any and all parts of this document and advertisements is prohibited, unless prior permission is granted (Printing Date: 29th April 2019).

tail 12

ENGRAVE YOUR AUTOGRAPH
ONTO THE WORLD

RAIMON LAND  TOKYO
TATEMONO

This Project is currently under process of Environment Impact Assessment Report (EIR). All the information shown here in and advertisements, such as numbers, types, materials, layouts, masterplan, tones, colours, details, and information about the condominium units and the Project, and etc. are approximation to be used as guideline for consideration and subject to contract, and the project owner reserves its right to change without prior notice. All rights reserved. Reproduction, photocopying, modification, alteration or publishing hereof without permission is prohibited.