



BANYAN TREE

---

RESIDENCES

— RIVERSIDE BANGKOK —





BANYAN TREE  
RESIDENCES

— RIVERSIDE BANGKOK —



DETAILS  
MAKE MAGIC

## NIRVANA DAII

Home is where the groundwork for all of life begins.  
Meticulous attention to detail is given to creating homes that represent  
a place of happiness and achievement that one can build on.

From the selection of materials and location, to the design and finish,  
Nirvana Daii ensures that every process is achieved with a mindset of  
uncompromising quality.

---

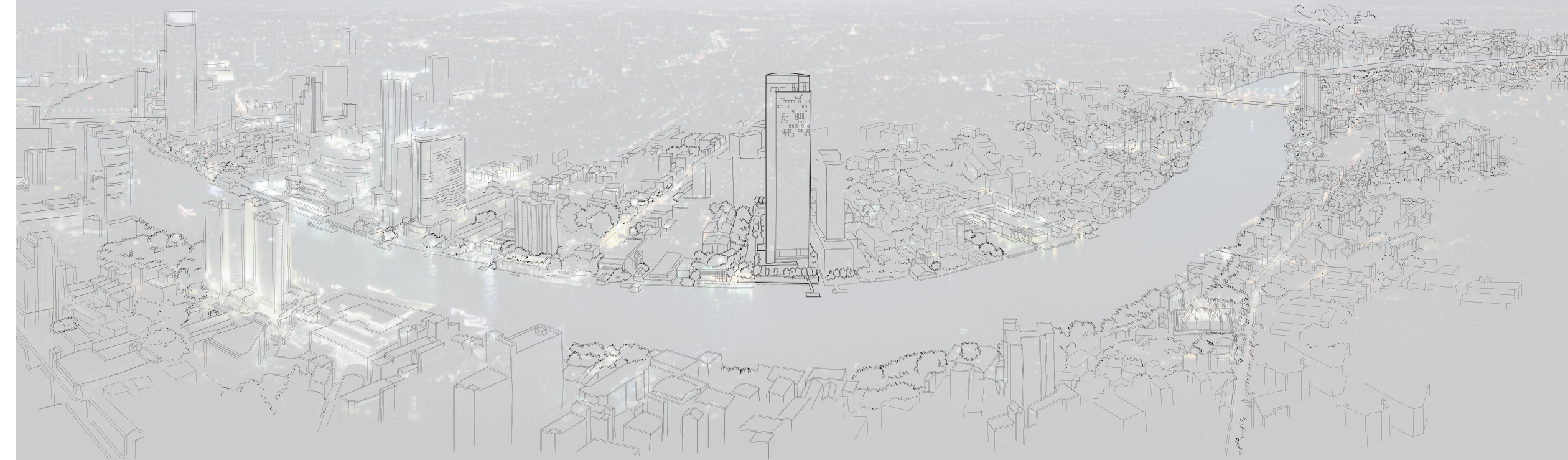


## AT THE HEART OF THE CHAO PHRAYA

A potent symbol of prosperity, abundance and serenity.  
Rising from one of the most magnificent bends of the Chao Phraya,  
Banyan Tree Residences Riverside Bangkok is destined to honour  
the majestic river and its rich history and culture.

---

“THE SANTUARY FOR YOUR SOUL”













## A RARE RIVERSIDE LOCATION

Situated within intimate reach of the river lifestyle, a rarity in the city, Banyan Tree Residences Riverside Bangkok is set in the heart of Chao Phraya River's historical Khlong San district, where past and present gracefully intertwine.

---

## BETWEEN THE OLD CITY

The Chao Phraya River has long shaped a cherished way of life for past generations.

A peaceful atmosphere of old-fashioned charm, historical buildings and cultural treasures can be found and explored along the river.

Banyan Tree Residences Riverside Bangkok brings a nurturing connection to its surrounding communities.

---







## AND THE NEW CITY

In the embrace of the old city and Bangkok's central business district, Banyan Tree Residences Riverside Bangkok enjoys the convenience of cosmopolitan commuting experiences to and from downtown Bangkok with easy expressway access and BTS/MRT transit stations nearby.

---









## CONCIERGE SERVICES

A dedicated Banyan Tree concierge will provide a high level of service for residents.

- Services include but are not limited to:
- Arranging outings for golf tee times, personal trainers, car washing services
  - Information / bookings for events, restaurants, transport, and spa services
  - In-building facilities reservations
  - Postal services and parcel handling



## ABOUT BANYAN TREE

Banyan Tree Group operates internationally to provide the ultimate tourism, accommodation and lifestyle experience. Banyan Tree's dedication, innovation and skills create an unrivaled living environment.

A rich heritage and reputation for outstanding quality and service make Banyan Tree one of the world's leading hospitality brands.

An established market leader in multi award winning resorts, spas and private residences.



Casa Lucardo, Tuscany, Italy

Banyan Tree Ringha, China



Chalet Lune, Four Valleys, Switzerland



Pittormie Castle, St. Andrews, Scotland

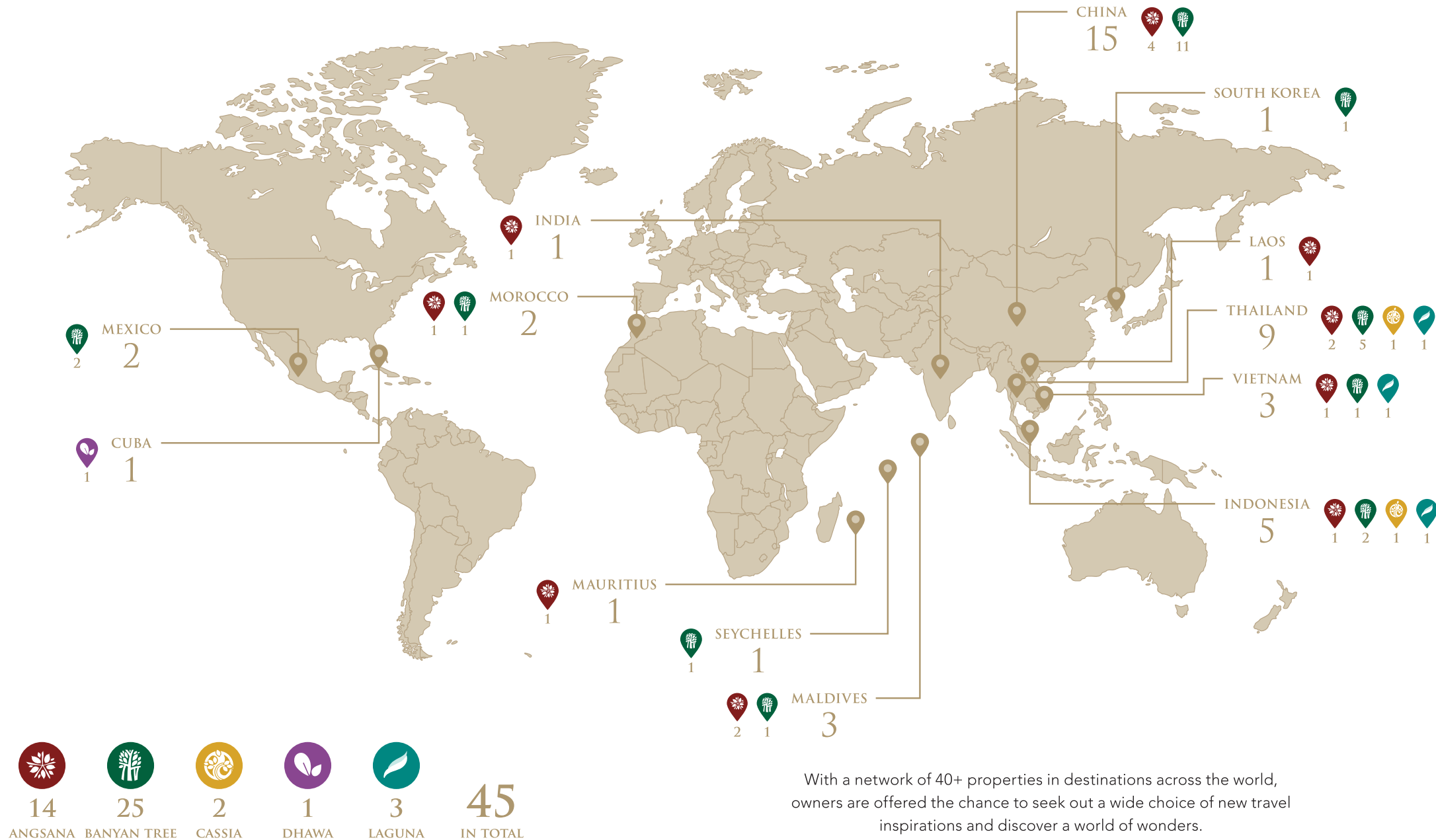
## BANYAN TREE PRIVATE COLLECTION\*

Asia's first global destination club that allows members to have complimentary stays at Banyan Tree Private Collection properties and its affiliates.

\*A select number of Banyan Tree Private Collection annual memberships will become available to customers upon transfer of select units.



# NETWORK



With a network of 40+ properties in destinations across the world, owners are offered the chance to seek out a wide choice of new travel inspirations and discover a world of wonders.

# SANCTUARY CLUB

- Exclusive complimentary membership for owners.
- Discounts and privileges from Banyan Tree Group worldwide at resorts, spas and retail galleries.
- Exclusive invitations through the Xperiential guest program for new resort opening.





## LET YOUR SOUL SHINE

Escape from the chaos of the city to a home where the luxury of inner peace and privacy is right at your doorstep.

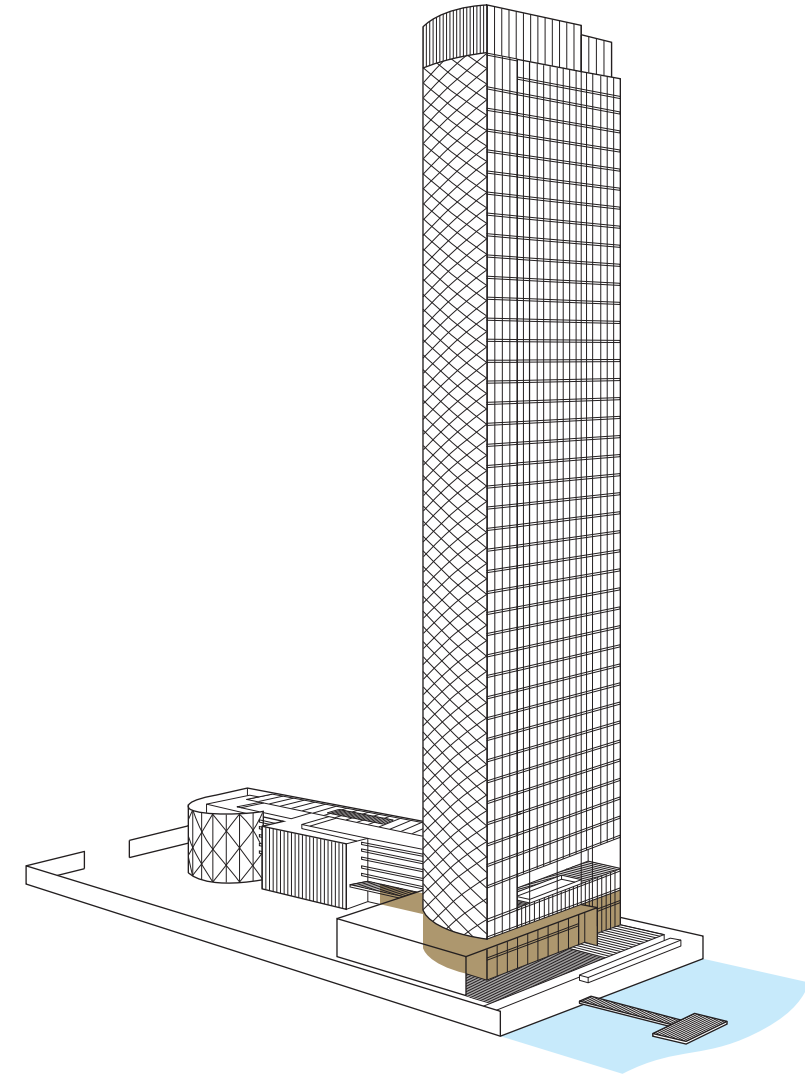
At Banyan Tree Residences Riverside Bangkok, a multitude of thoughtful world class facilities await.

From private lifts to a luxurious fitness center, adult and kids swimming pools to a river facing jacuzzi, Banyan Tree Residences Riverside Bangkok offers holistically rejuvenating and relaxing experiences for the mind, body, and soul.

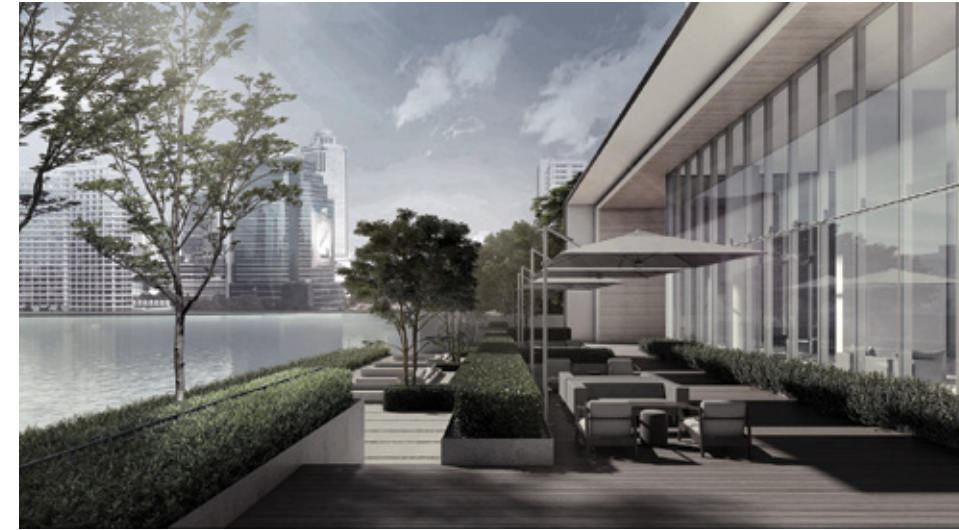




# GROUND FLOOR



- GROUND FLOOR
- Residential Lobby
  - Riverfront Lounge
  - Outdoor Lounge
  - Resident Shuttle Boat
  - Sunken Seating Area
  - Multipurpose Room



Outdoor Lounge



Main Entrance



Private Resident Shuttle Boat Pier



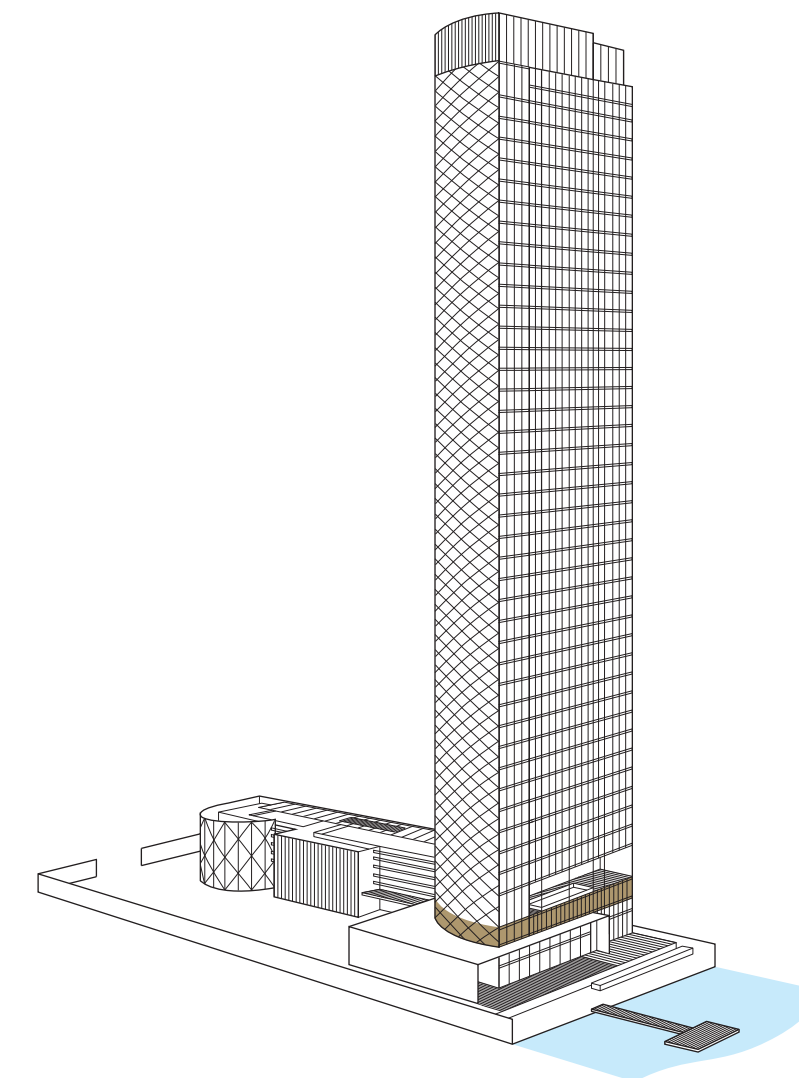


Private Dining Room



Library Room

## SECOND FLOOR

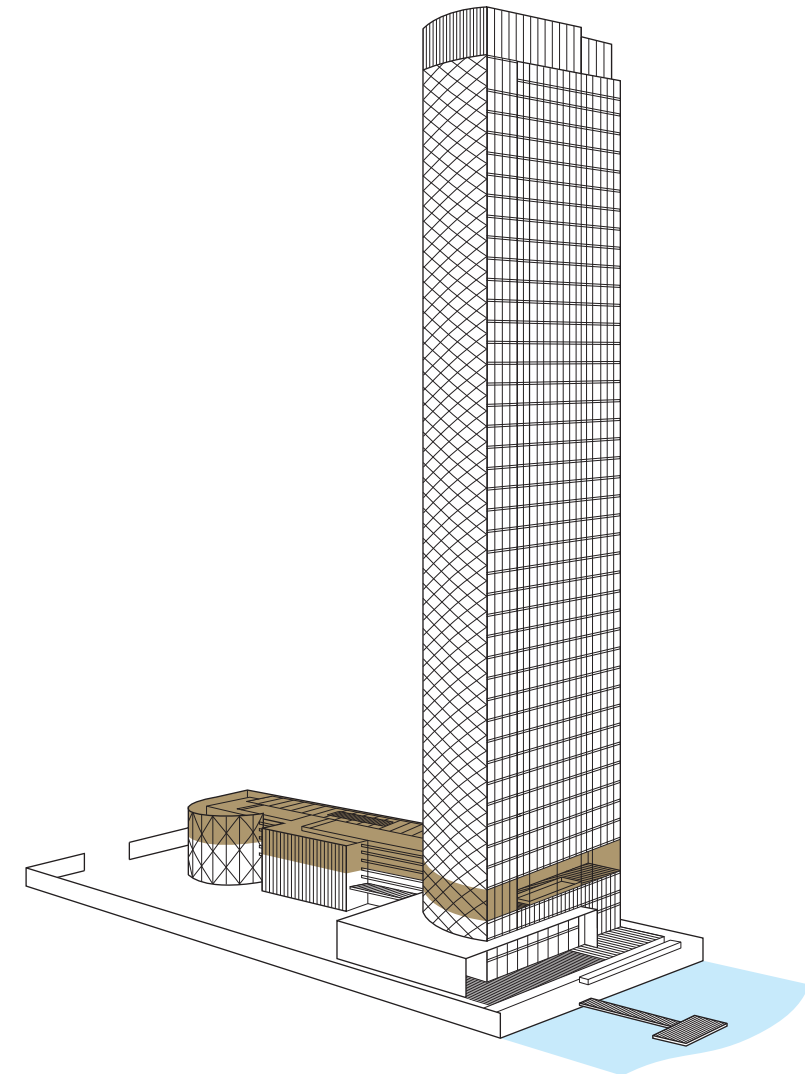


### SECOND FLOOR

- Private Dining Room
- Prefunction Room
- River View Owners Lounge
- Library Room
- Meeting Room
- Board Room



# THIRD FLOOR



## THIRD FLOOR

- Swimming Pool
- Kids Pool
- Cabanas
- Saunas
- Steam Rooms
- Kids Room
- Active Play Area
- Outdoor Lounge & BBQ Area
- River Facing Jacuzzi
- Fitness Center
- Banyan Tree Spa Room



Outdoor Lounge & BBQ Area



Fitness Center



Swimming Pool





## “THE SANCTUARY FOR YOUR SOUL”

PRIVATE  
LIFT LOBBIES



BANYAN TREE  
RESIDENCES  
— RIVERSIDE BANGKOK —

UNOBSTRUCTED  
VIEW

133 UNITS  
LOW - DENSITY  
MAXIMUM 4 UNITS/FLOOR

6,000 SQ.M  
COVERED FACILITIES

195%  
CAR PARKING





## INTERIOR DESIGN

A modern interpretation of the Thai way of life along the river, the aesthetic heart of the interior design reflects the minimalist concept of keeping things simple using clean, crisp lines. Expansive windows and high ceilings offer wide open, unobstructed views of sunrises and historical landmarks.



















# FACTSHEET

PROJECT NAME : Banyan Tree Residences Riverside Bangkok

LOCATION : Chao Phraya Riverside, Charoennakhon Road

PROJECT TYPE : Ultimate Luxury Freehold Condominium  
1 Building 45 Stories  
133 Riverfront Units  
(Maximum 4 Units Per Floor)

DEVELOPER : Nirvana Daii PLC.

TOTAL PROJECT AREA : 5-1-10 Rai

UNIT TYPE AND AREA :  
- 1 Bedroom 69.40 - 85.45 Sq.m  
- 2 Bedroom 158.44 - 179.22 Sq.m  
- 3 Bedroom 245.10 Sq.m  
- 4 Bedroom ( Duplex ) 419.85 - 421.35 Sq.m  
- Penthouse ( Duplex ) 838.70 Sq.m

PARKING : 260 Vehicles

ARCHITECT / INTERIOR /  
LANDSCAPE DESIGNER :  
SCDA Singapore

LOCAL ARCHITECT :  
CAPA Co. Ltd

PROJECT DESIGNER :  
Soo K. Chan

CONTRACTOR :  
Bouygues - Thai

## AMENITIES

### GROUND FLOOR

- Residential Lobby
- Riverfront Lounge
- Outdoor Lounge
- Resident Shuttle Boat
- Sunken Seating Area
- Multipurpose Room

### SECOND FLOOR

- Private Dining Room
- Prefunction Room
- River View Owners Lounge
- Library Room
- Meeting Room
- Board Room

### THIRD FLOOR

- Swimming Pool
- Kids Pool
- Cabanas
- Saunas
- Steam Rooms
- Kids Room
- Active Play Area
- Outdoor Lounge & BBQ Area
- River Facing Jacuzzi
- Fitness Center
- Banyan Tree Spa Room

## SPECIAL FEATURES & SERVICES

- Banyan Tree Spa
- Banyan Tree Concierge Service
- Private Lifts
- Personal/Sports Equipment Storage

## BANYAN TREE PRIVILEGES

- Banyan Tree Sanctuary Club
- Banyan Tree Private Collection\*

\*Subject to certain terms and conditions



# GROUND FLOOR PLAN



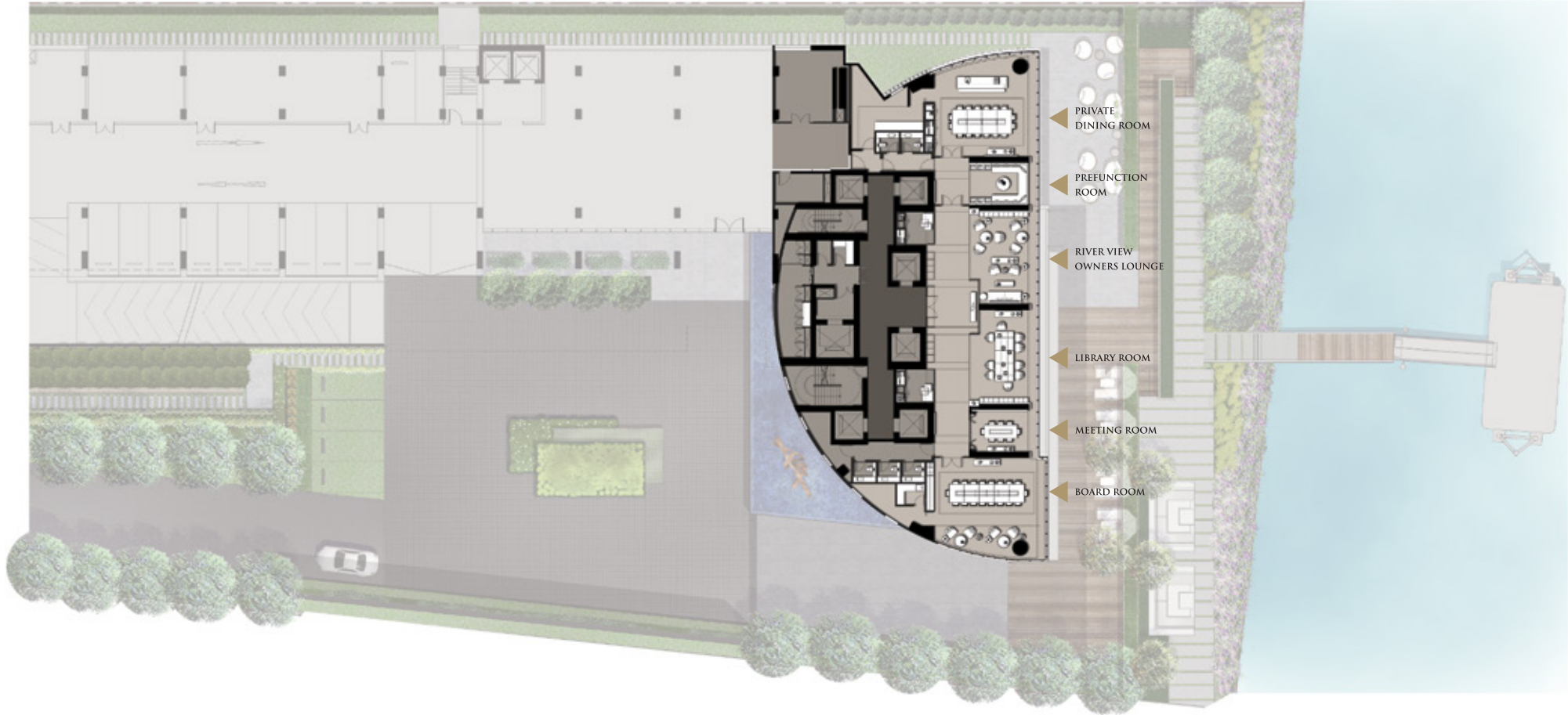
# GROUND FLOOR AMENITIES



- Residential Lobby
- Riverfront Lounge
- Outdoor Lounge
- Resident Shuttle Boat
- Sunken Seating Area
- Multipurpose Room



# SECOND FLOOR AMENITIES



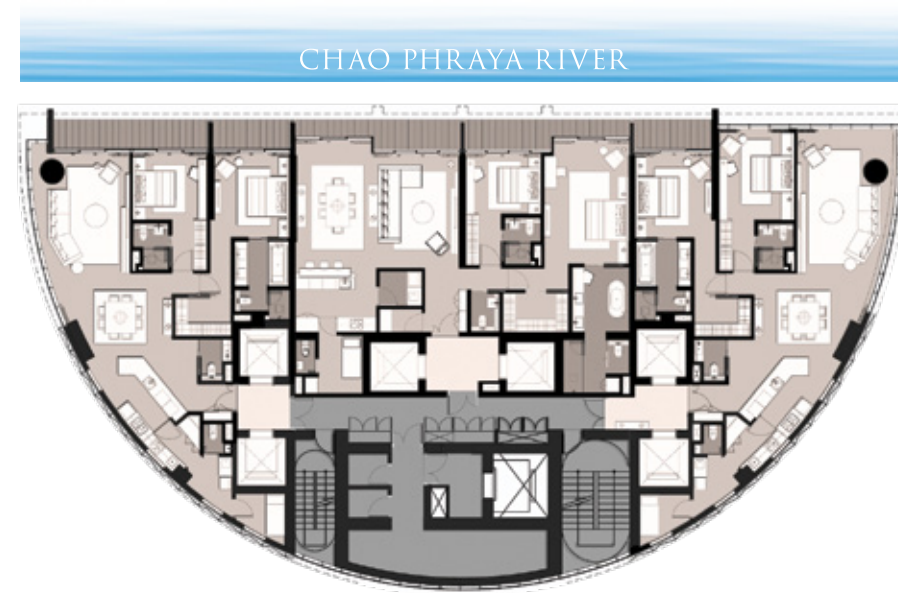
- Private Dining Room
- Prefunction Room
- River View Owners Lounge
- Library Room
- Meeting Room
- Board Room

# THIRD FLOOR AMENITIES

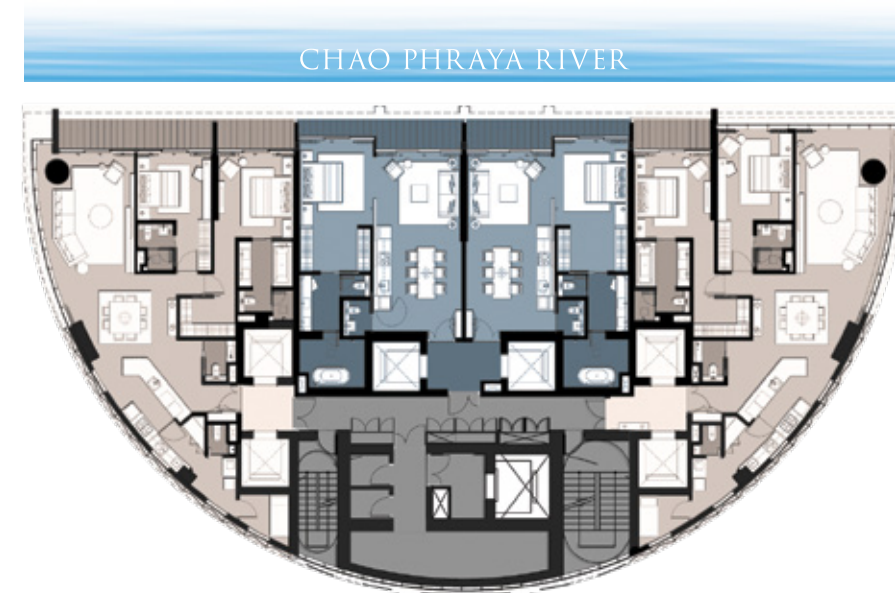


- Swimming Pool
- Kids Pool
- Cabanas
- Saunas
- Steam Rooms
- Kids Room
- Active Play Area
- Outdoor Lounge & BBQ Area
- River Facing Jacuzzi
- Fitness Center
- Banyan Tree Spa Room

## FLOOR PLAN



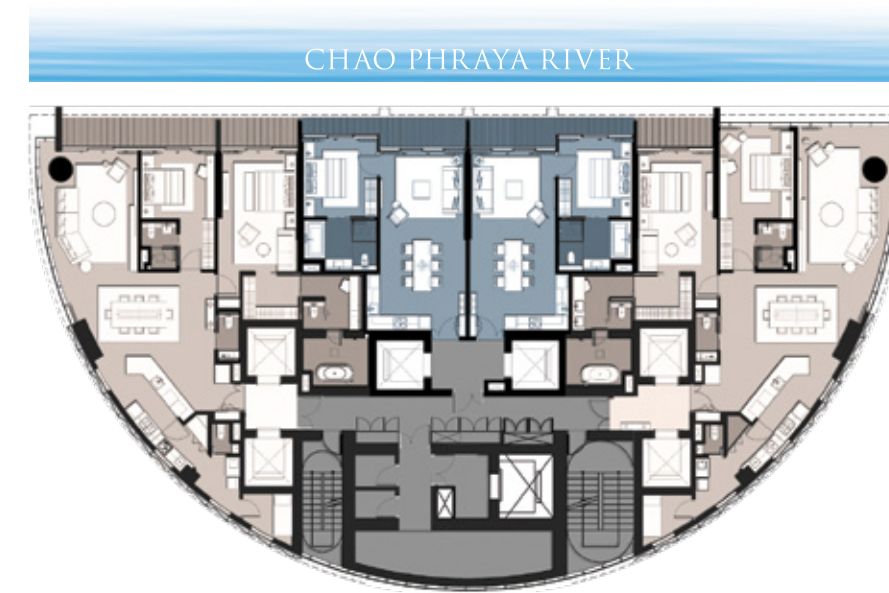
FLOORS 4 - 9



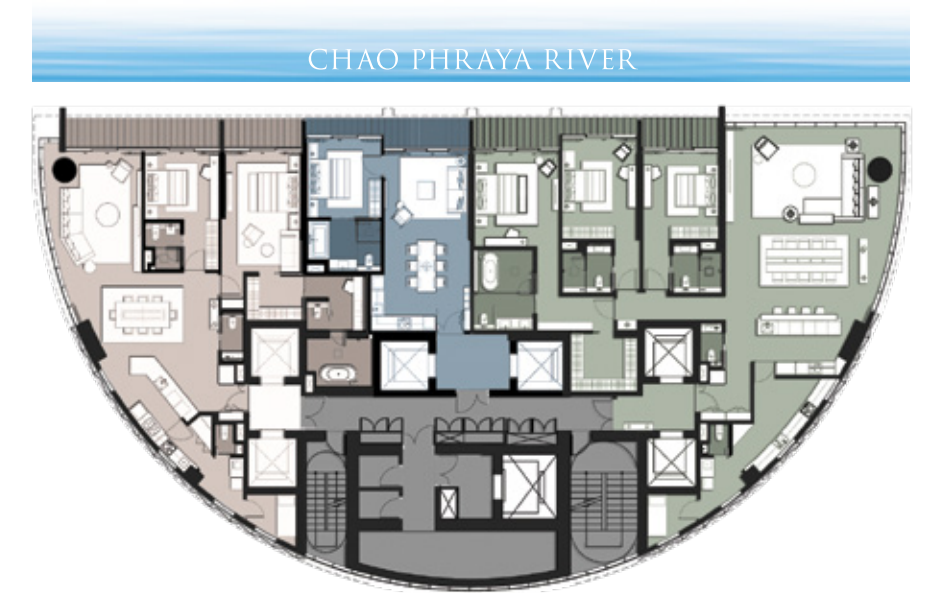
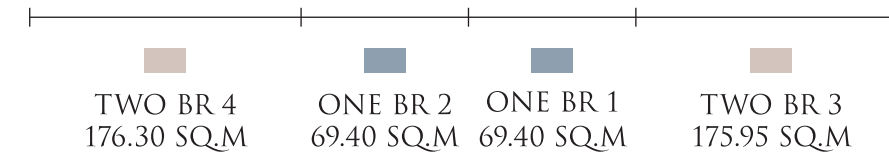
FLOORS 10 - 12



## FLOOR PLAN



FLOORS 12A - 25



FLOORS 26 - 41





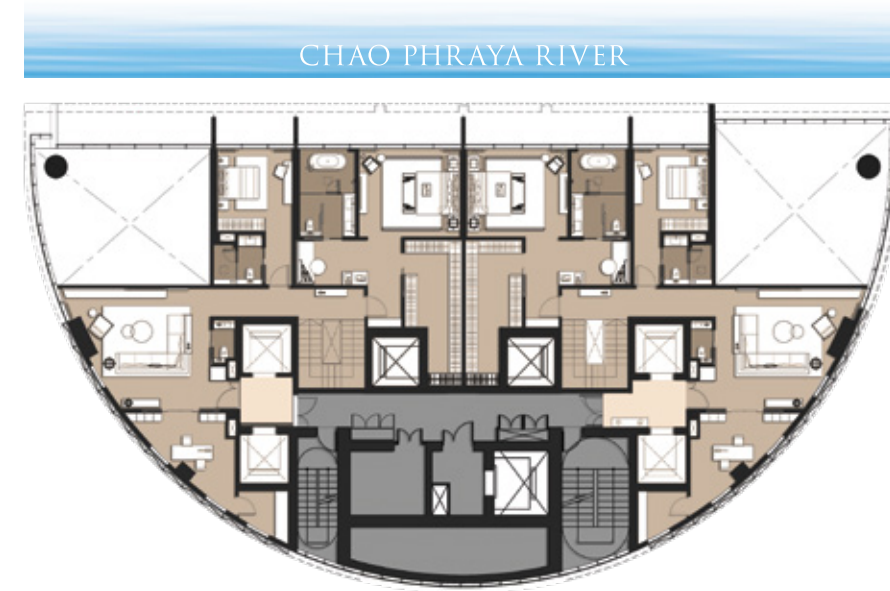
## FLOOR PLAN



LOWER FLOOR  
FLOOR 42

FOUR BR 2  
419.85 SQ.M

FOUR BR 1  
421.35 SQ.M

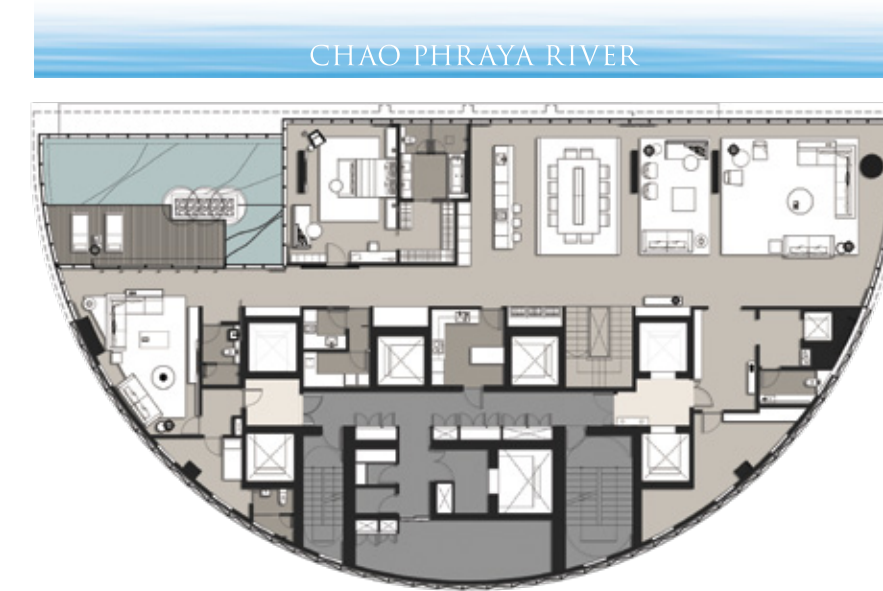


UPPER FLOOR  
FLOOR 43

FOUR BR 2  
419.85 SQ.M

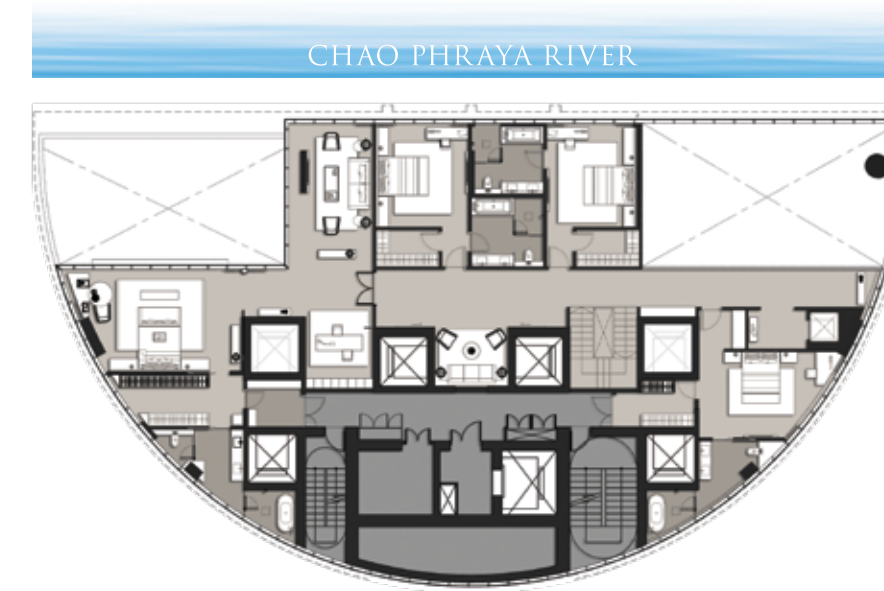
FOUR BR 1  
421.35 SQ.M

## FLOOR PLAN



LOWER FLOOR  
FLOOR 44

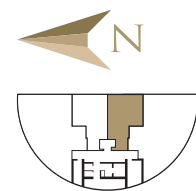
PENTHOUSE DUPLEX  
838.70 SQ.M



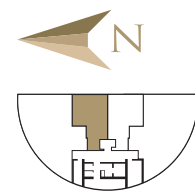
UPPER FLOOR  
FLOOR 45

PENTHOUSE DUPLEX  
838.70 SQ.M

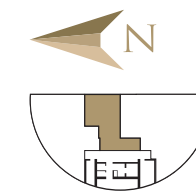
ONE BEDROOM 1  
(69.40 SQ.M)



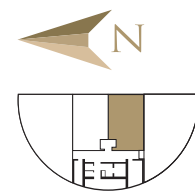
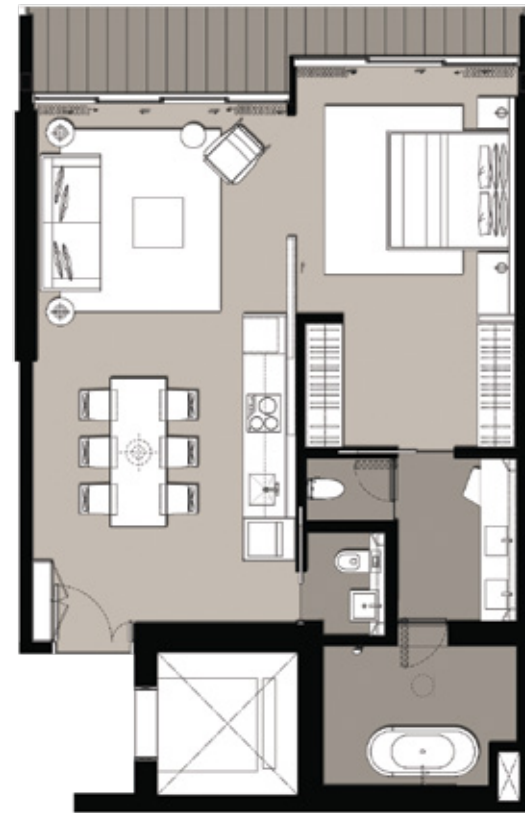
ONE BEDROOM 2  
(69.40 SQ.M)



ONE BEDROOM 3  
(77.95 SQ.M)

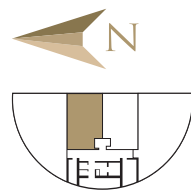


ONE BEDROOM 4  
(85.45 SQ.M)

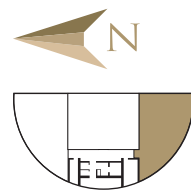




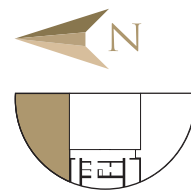
ONE BEDROOM 5  
(85.45 SQ.M)



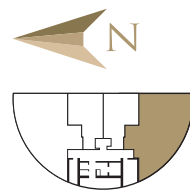
TWO BEDROOM 1  
(158.40 SQ.M)



TWO BEDROOM 2  
(159.25 SQ.M)

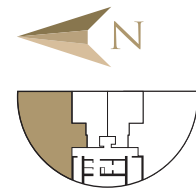


TWO BEDROOM 3  
(175.95 SQ.M)



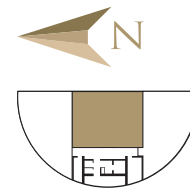
## TWO BEDROOM 4

(176.30 SQ.M)



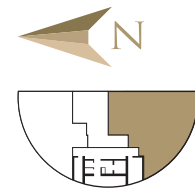
## TWO BEDROOM 5

(179.20 SQ.M)



## THREE BEDROOM

(245.10 SQ.M)

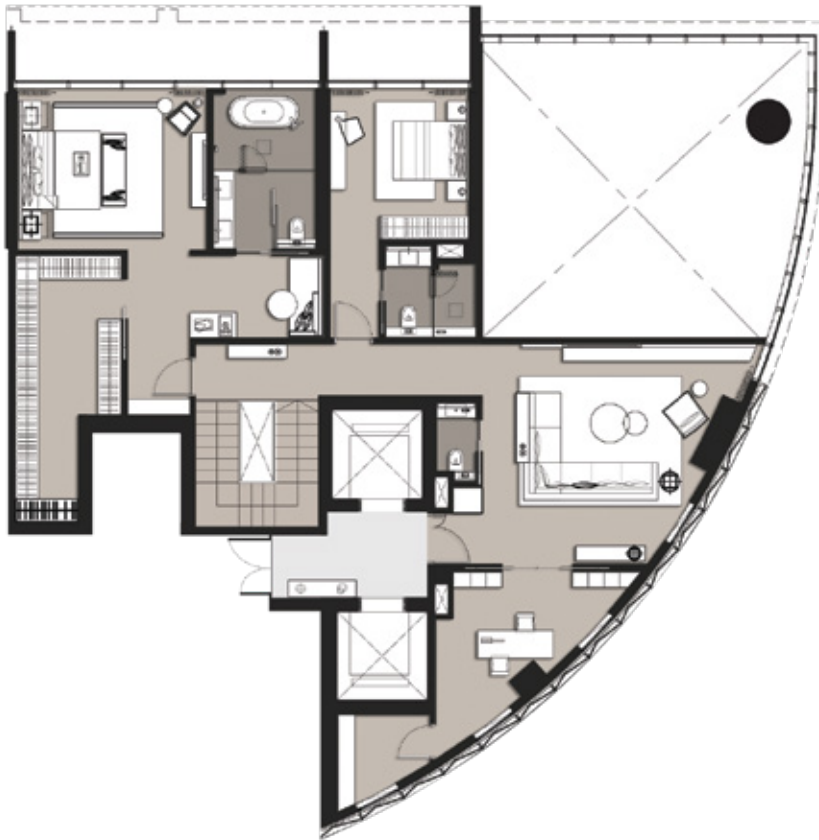


FOUR BEDROOM DUPLEX 1

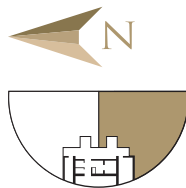
(419.85 SQ.M)



LOWER FLOOR  
FLOOR 42



UPPER FLOOR  
FLOOR 43

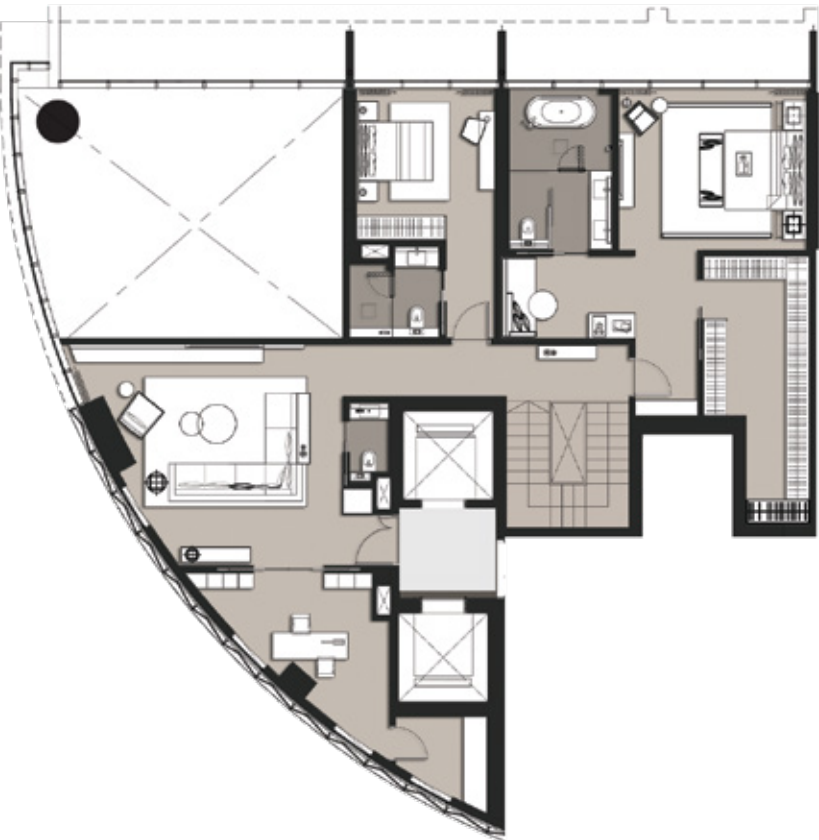


FOUR BEDROOM DUPLEX 2

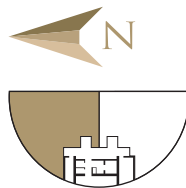
(421.35 SQ.M)



LOWER FLOOR  
FLOOR 42



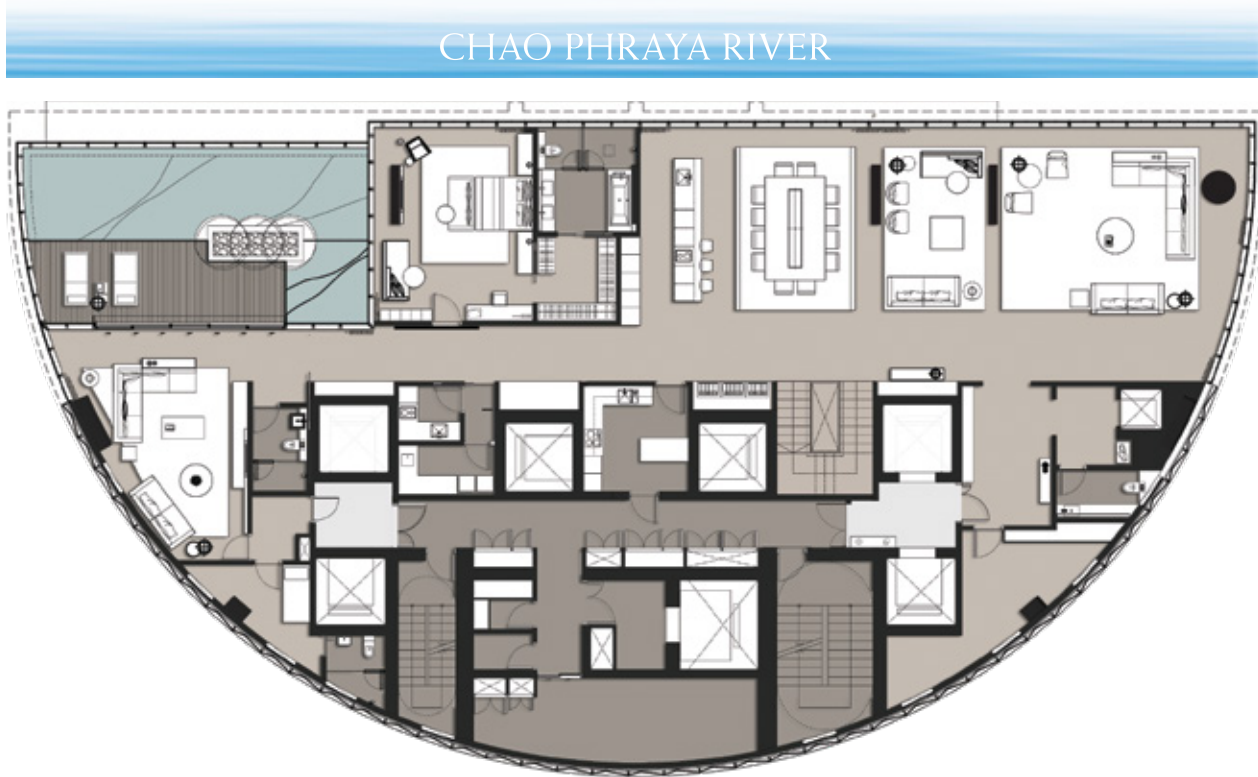
UPPER FLOOR  
FLOOR 43



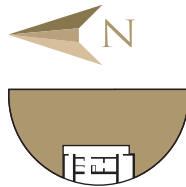


PENTHOUSE DUPLEX

(838.70 SQ.M)

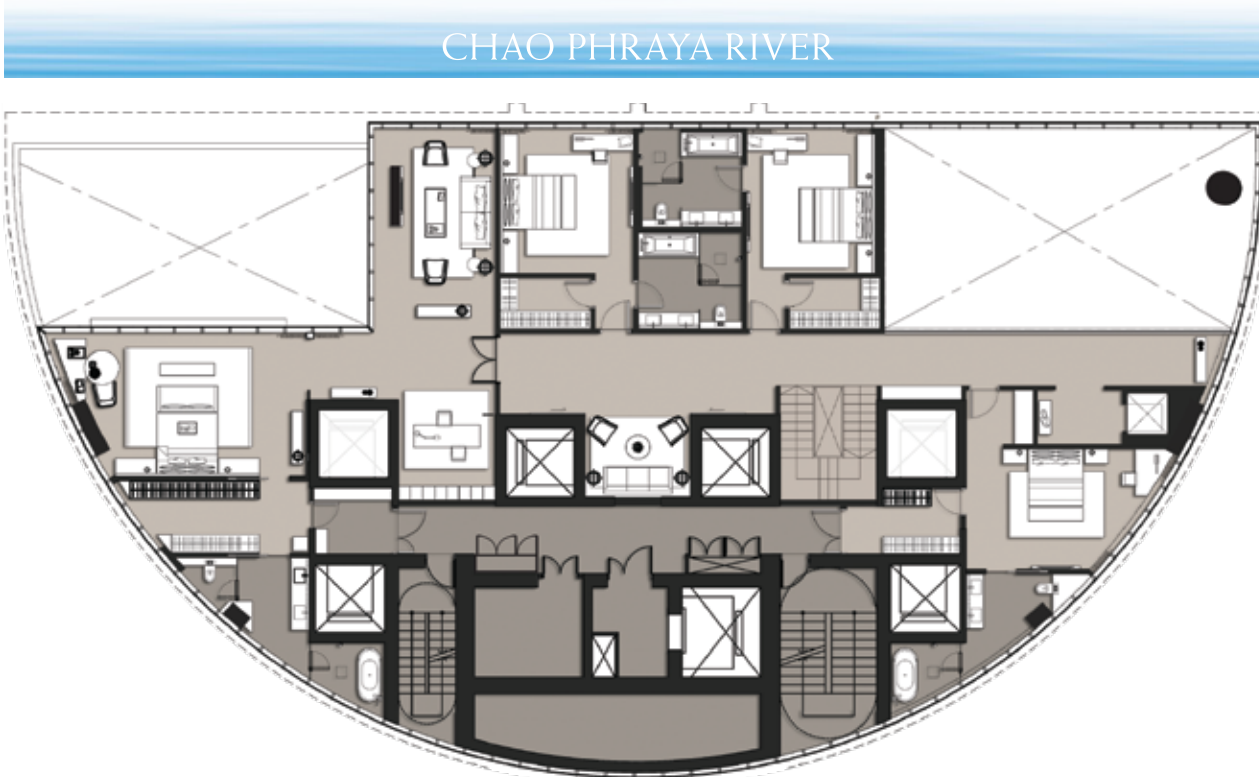


LOWER FLOOR  
FLOOR 44

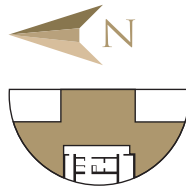


PENTHOUSE DUPLEX

(838.70 SQ.M)



UPPER FLOOR  
FLOOR 45





BANYAN TREE  
RESIDENCES  
— RIVERSIDE BANGKOK —





BANYAN TREE

---

RESIDENCES

— RIVERSIDE BANGKOK —