



# NORTH SALEM HIGH SCHOOL



Students Name: \_\_\_\_\_ Date: \_\_\_\_\_

Address: \_\_\_\_\_

City: \_\_\_\_\_ State: \_\_\_\_\_ Zip: \_\_\_\_\_

Email Address: \_\_\_\_\_

Student Cell #: \_\_\_\_\_ Parent/Guardian Cell #: \_\_\_\_\_

## Sizing Chart

X-Small (30-32) 2X (50-52)  
Small (34-36) 3X (54-56)  
Medium (38-40) 4X\* (58-60) \$40  
Large (42-44) 5X\* (62-64) \$50  
X-Large (46-48)

## STARTER PACKAGE

\$259

☐

Includes:

- Embroidered name on front
- Vinyl sleeves
- School letter
- Full access zipper
- Graduation year
- inside right pocket

\*Upgrade to Leather Sleeves \$95

☐

## VARSITY PACKAGE

\$349

☐

Includes all options as Starter Package plus:

- School name or last name on upper back
- Mascot image on middle back

\*Upgrade to Leather Sleeves \$95

☐

OR

## LEFT SLEEVE PATCHES

\*insert patch code below

\_\_\_\_\_ \$40

\_\_\_\_\_ \$40

\_\_\_\_\_ \$40



## RIGHT SLEEVE PATCHES

\*insert patch code below

\_\_\_\_\_ \$40

\_\_\_\_\_ \$40

\_\_\_\_\_ \$40



Choose coat and sleeve color:

Red coat: black vinyl or black leather sleeve OR Black coat: white vinyl or white leather



SCAN QR CODE TO VIEW SLEEVE

PATCHES

## ADD INSERTS TO LETTER

\*insert # below

\_\_\_\_\_ \$4

\_\_\_\_\_ \$4

\_\_\_\_\_ \$4

\_\_\_\_\_ \$4

\*description

\_\_\_\_\_

\_\_\_\_\_

\_\_\_\_\_

\_\_\_\_\_

## JACKET PERSONALIZATION

Jacket Size: \_\_\_\_\_

Embroidered Name (front): \_\_\_\_\_

Chenille Name: \_\_\_\_\_ \$25

☐

Grad Year (pocket): \_\_\_\_\_

Wording (upper back): \_\_\_\_\_ (included in varsity package)

Wording (lower back): \_\_\_\_\_ \$45

☐

## NOTES

Package Subtotal \$

Sleeve Patches \$

Inserts \$

Add 2" sleeve/  
body (\$20.00) \$

Other \$

Shipping \$25.00

Total \$

Amount Paid \$

Balance Due \$

Make checks payable to:

JOSTENS  
P.O. Box 2350  
Clackamas OR 97015  
Phone: (503) 723-8006  
[thul.office@jostens.com](mailto:thul.office@jostens.com)

Payment:

Method Credit Card: ☐ Check: ☐ Cash: ☐

Amount:

Exp Date:

Check#

Card #:

Name:

Code on  
Back

Payment: Pay in full or 50% down at time of order. Pricing valid through June 30th, 2026

Mail or email this completed order form to address provided. Jackets take approximately 7 weeks to manufacture.

# Adult

ADULT WOOL JACKET	XS	S	M	L	XL	2X	3X	4X	5X	6X
Chest Size	30-32"	34-36"	38-40"	42-44"	46-48"	50-52"	54-56"	58-60"	62-64"	66-68"
Center Back	26½"	27"	27½"	28"	28½"	29"	29"	29"	29"	29"
Sleeve Length	34"	34½"	35½"	36¼"	36½"	37½"	38½"	39"	39½"	40"

# Youth

YOUTH WOOL JACKET	XS	S	M	L	XL
Chest Size	4	6-8	10-12	14-16	18-20
Center Back	18¼"	20½"	22½"	24¼"	25½"
Sleeve Length	21"	25"	29"	32"	33½"

# How to Measure

## CHEST SIZE

- Stand up straight with arms relaxed at your sides.
- Measure under your arms around your chest at the fullest point.
- Tape measure should be held straight around the back of your body, parallel to the floor.

## CENTER BACK

- Measure from the base of your neck down to where you want the jacket to stop at your waist.
- This measurement includes the jacket's knit waist band.

## SLEEVE LENGTH

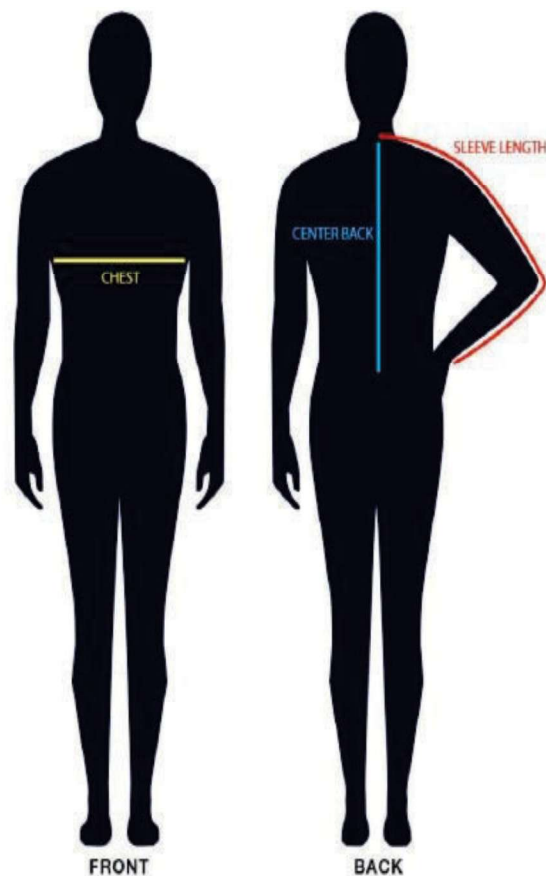
- Bend your elbow 90 degrees.
- Place your hand on your hip.
- Hold the tape at the center back of your neck.
- Measure across your shoulder to your elbow and down to your wrist.
- The total length in inches is your sleeve length.
- This measurement includes the knit trim at the end of the sleeve.

## GET THE PERFECT FIT

- Jackets are unisex sized.
- Remember, if you're a freshman or sophomore you'll probably grow. You may want to get a size larger.
- Think about what you'll wear with your jacket—like a hoodie or thick sweater.
- **Tip:** A good way to find your exact fit is to try the sizes your Jostens rep will have at the jacket fitting scheduled for your school.

## ALTERATIONS

- Sleeve and jacket lengths can be altered to add or decrease length.
- 2-inch increments up to an addition or reduction of 6 inches in length.
- Upcharges apply.



*Jostens®*

©2020 Jostens, Inc. 202963