



# MUYALTA

July 2025



# LOCATION







34.8 miles from Cancun  
International Airport by  
road



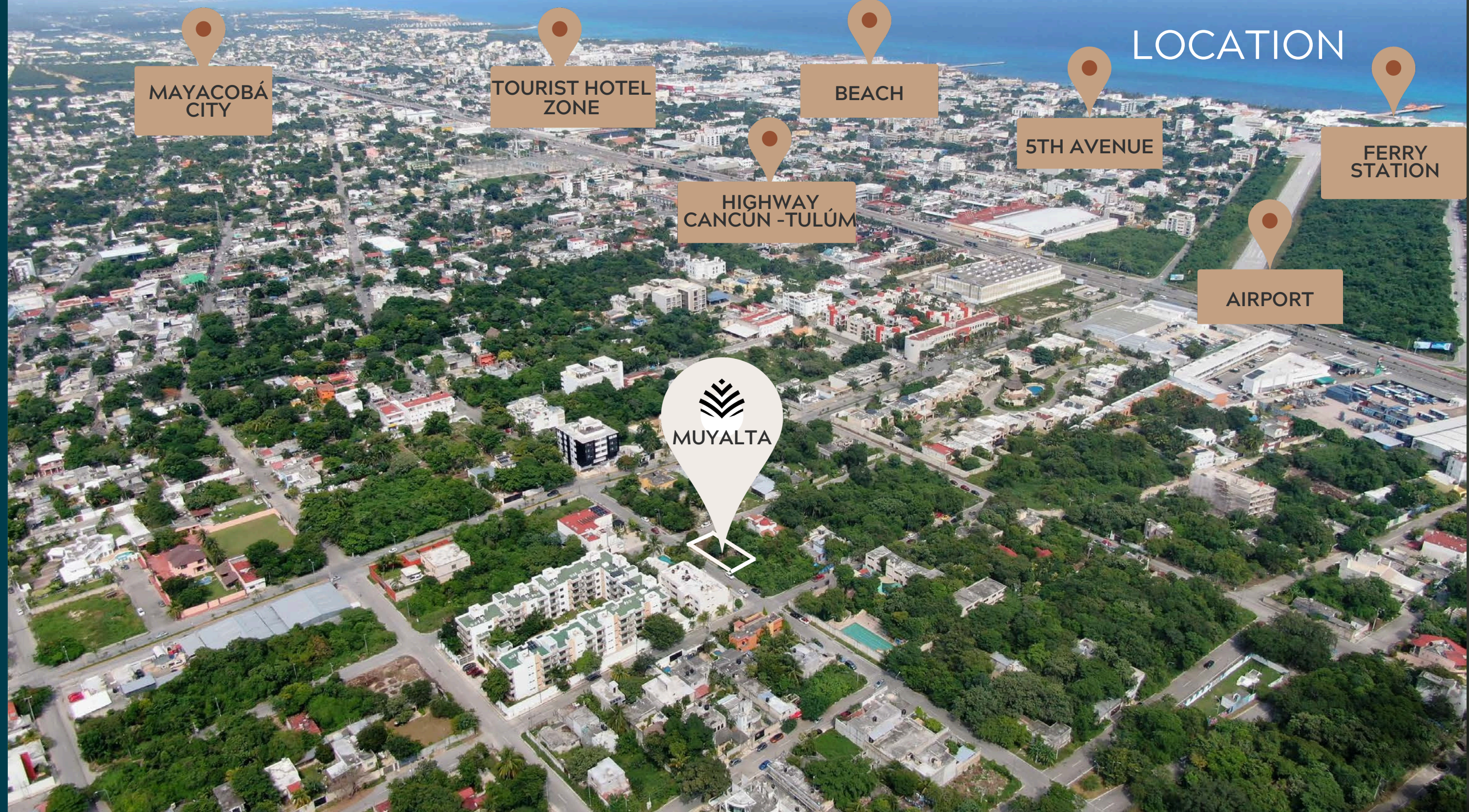
Connections worldwide



Highways with transport  
connecting the entire  
peninsula



7.5 miles to Cozumel by  
passenger or cargo Ferry



Playa del Carmen is the heart of the Riviera Maya, a cosmopolitan and vibrant city experiencing constant growth.

**MUYALTA** is located in one of the best value growth areas in the city, providing high-class land, air and maritime transport.



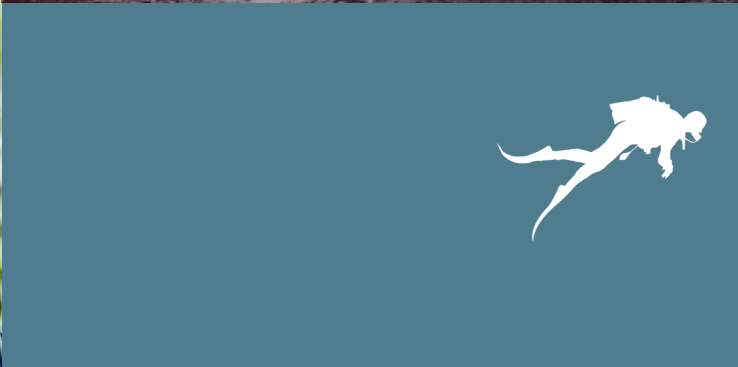
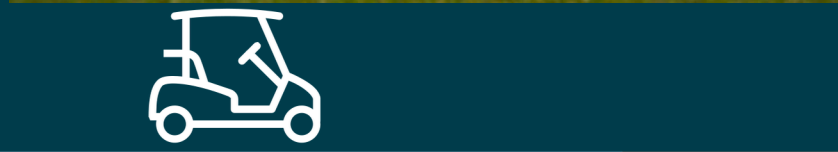
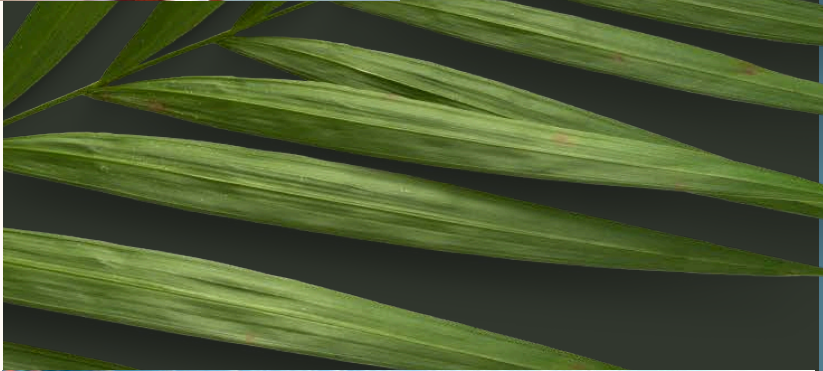
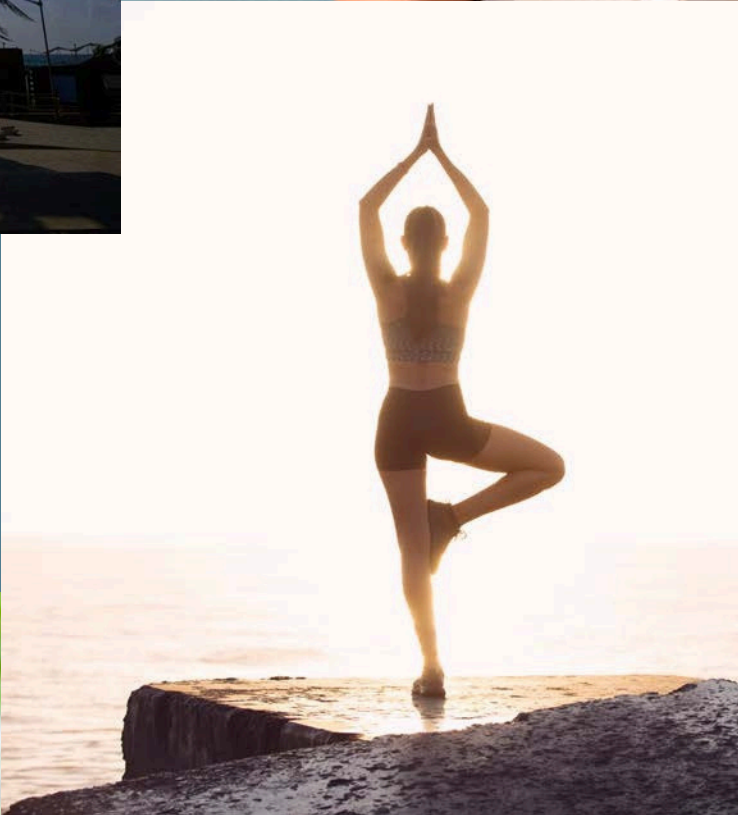
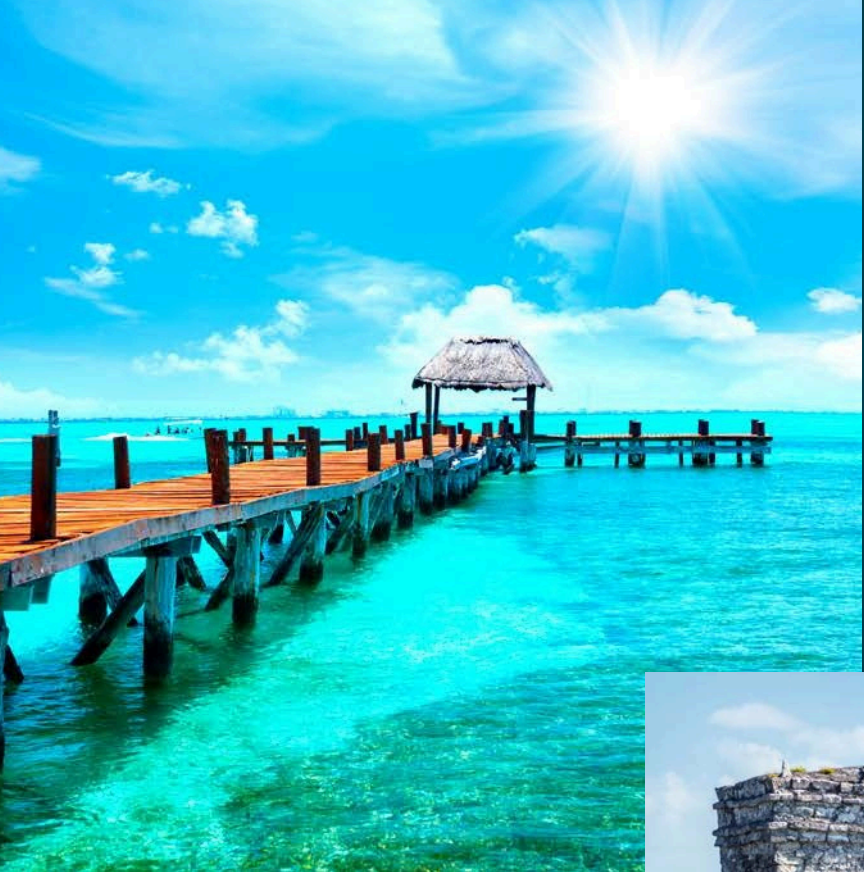


## LOCATION

Lote 1, Manzana 259, Zona 1, Calle  
13 Sur y Calle Diagonal 70 Sur,  
Colonia Ejido,  
Playa del Carmen  
Municipio de Solidaridad  
Quintana Roo  
CP 77712











# MUYALTA

SUSTAINABILITY LUXURY SERVICE





# MUYALTA

“LIVE A FULL LIFE, IN  
PEACE AND PLENTY”

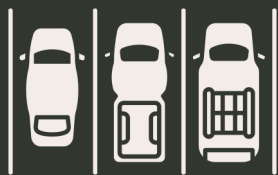
Discover the comfort and beauty of all the areas that can be found in MUYALTA, a place intended in all aspects to make your days unforgettable. By acquiring your property, be sure that each space will be tailored to your needs, guaranteeing its increasing value and providing you and your family with the tranquility of patrimonial security.







MUYALTA is designed with the principles of bioclimatic architecture, based on sustainability, luxury and comfort.



#### BASEMENT

Spacious parking facilities located in the walkout basement, with a comfortable vertical connection (elevator) to all units, additionally equipped with cisterns that store enough water for any emergency



#### SHARED USE TERRACES

On each level, with wide spaces to transit and smaller spaces to take a break



#### LOBBY

Spacious, refreshing, with personality, comfort and elegance



#### ROOFTOP

Experience the high-point of the city and live unforgettable moments at the swimming pool and lounge area equipped with a bbq and bar







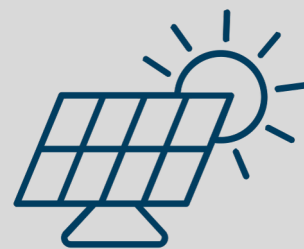
COMMON AREAS





COMMON AREAS





SOLAR PANELS



CERTIFIED ANTI-HURRICANE  
STRUCTURAL DESIGN



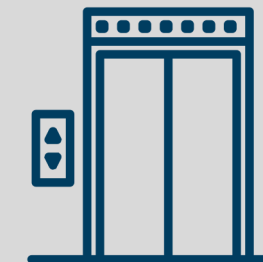
BACKUP POWER SYSTEM



RAINWATER HARVESTING SYSTEM



ECOLOGICAL WATER  
TREATMENT



HIGH EFFICIENCY ELEVATOR



LOW CO2 EMISSION



INTELLIGENT  
KEY SYSTEM



WASTE COLLECTION DUCT



LOW MAINTENANCE



COMPLETE SURVEILLANCE SYSTEM



ECO-TECHNOLOGY AND  
TECHNOLOGY DESIGN



# D 11



104.108 M2



1 LIVING ROOM - DINING  
ROOM - BAR



1 KITCHEN - BREAKFAST BAR



2 BEDROOMS



2 BATHROOMS



1 LAUNDRY ROOM



1 PARKING PLACE



3 BALCONIES



1 SERVICE AREA



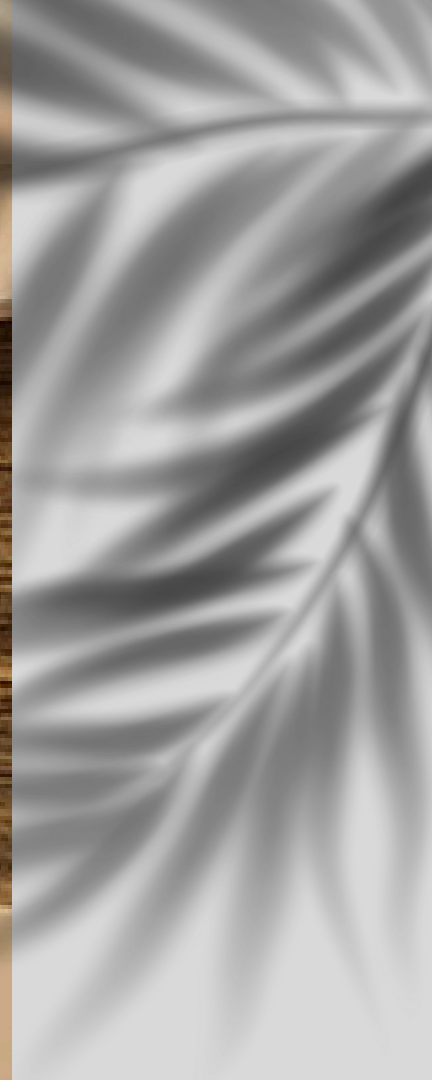




D 11

INTERIORS





D 11

INTERIORS





D 11

INTERIORS





D 11

INTERIORS





D 11

INTERIORS





D 11

INTERIORS



# LOFT



75.08 M2



1 LIVING ROOM



1 KITCHEN - BREAKFAST BAR



1 BEDROOM



1.5 BATHROOMS



2 BALCONIES



1 SERVICE AREA



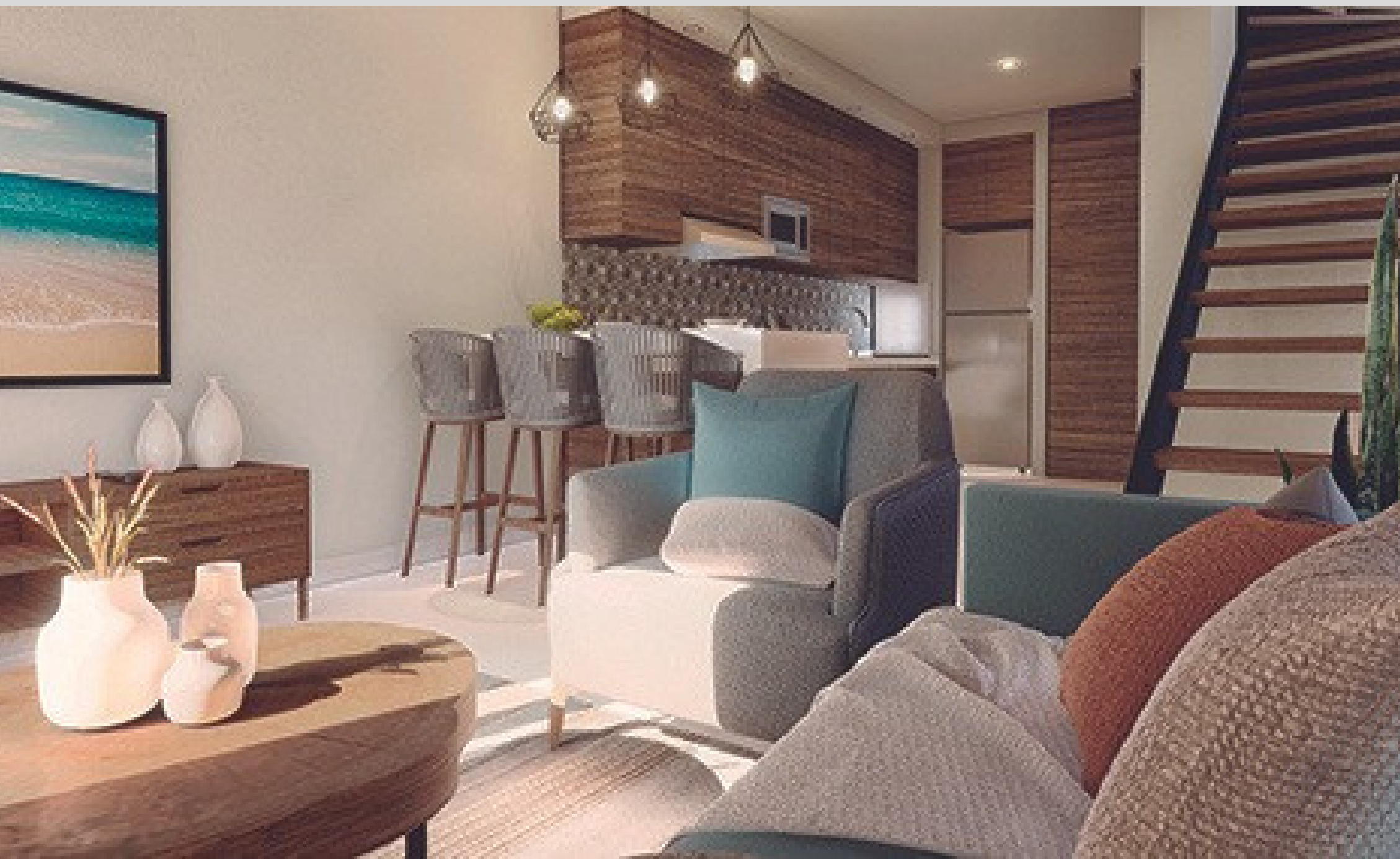
















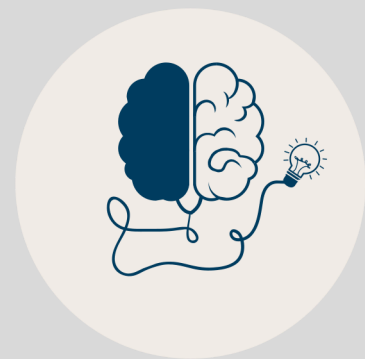








CREATIVE SOLUTIONS



INNOVATIVE THINKING



ATTITUDE AND COLLABORATIVE ATTENTION  
TO EXCELLENCE



# MUYALTA



## CONTACT



+1-940-260-2777 Call & SMS  
+52-984-138-7741 Whatsapp  
[muyalta@alainbessette.com](mailto:muyalta@alainbessette.com)  
[www.alainbessette.com/muyalta](http://www.alainbessette.com/muyalta)