

**BECOME A
BUSINESS OWNER
IN YOUR
COMMUNITY**



Creating entrepreneurial ecosystems where anybody can become an influential business owner in their community.





Shift KC is an incubator designed to train, mentor, and resource entrepreneurial skills so that anybody can launch and scale a successful, viable business in Kansas City.



Every person has a seed
within them to create
wealth and wield influence
to the 4th generation.



Shift KC: Seven Steps from Seed to Influence

SHIFT EMPLOYEE MINDSET TO AN ENTREPRENEUR

1. **TRAIN:** An entrepreneurial incubator shifting mindset and heart.
2. **RESOURCE:** Designated endowment funds to resource early stage entrepreneurs.

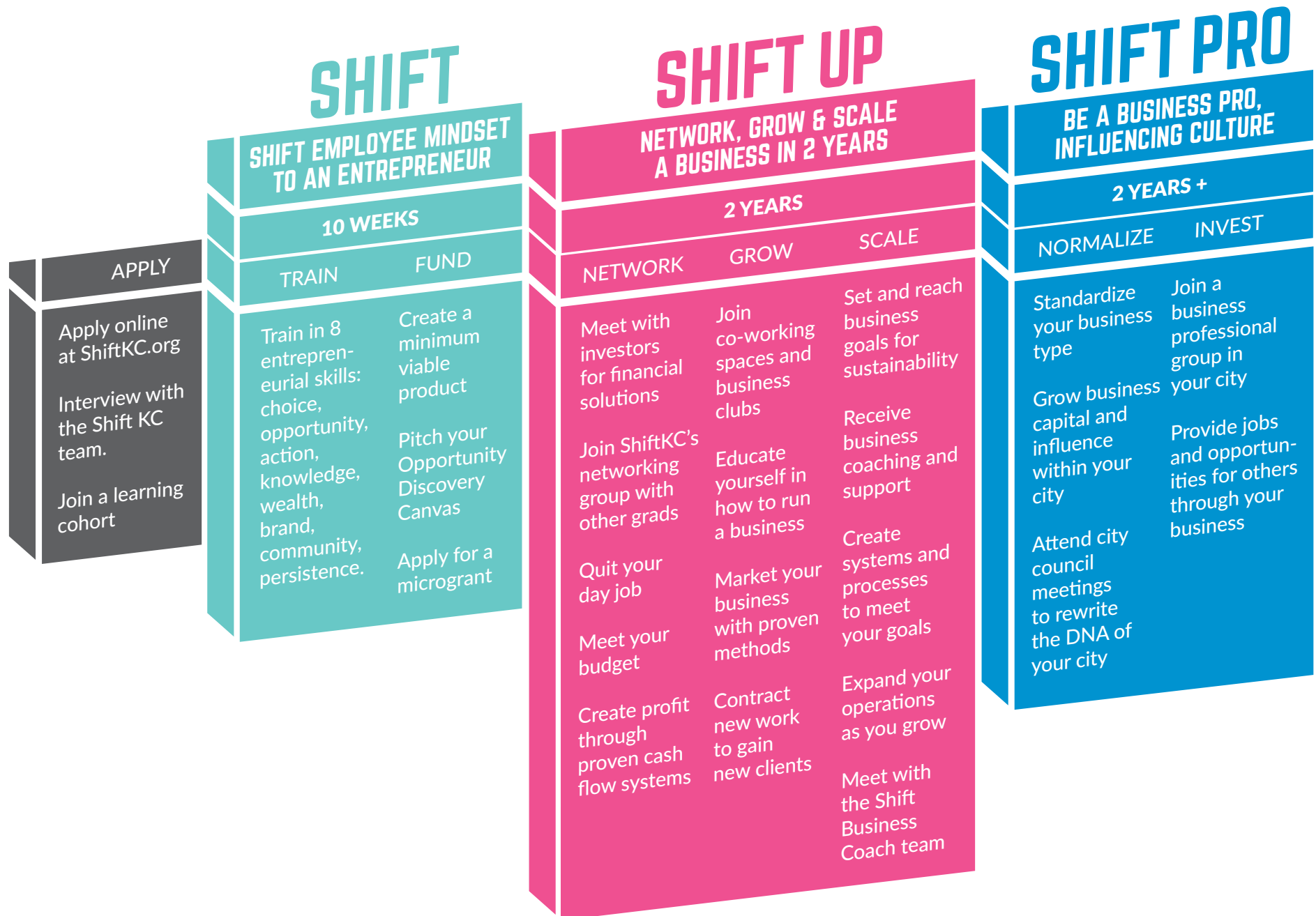
NETWORK, GROW & SCALE A BUSINESS IN 2 YEARS

3. **NETWORK:** Ongoing network events and groups.
4. **GROW:** Business consulting and coaching with the Shift Up team.
5. **SCALE:** Decentralized learning and sustainable practices.

BE A BUSINESS PRO, INFLUENCING CULTURE

6. **NORMALIZE:** Affect change within the community and the city.
7. **INVEST:** Invest in others

Shift KC: Timeline from Seed to Influence





Next steps?

- Learn entrepreneurship:
Apply at ShiftKC.org
- Partner with us:
Connect with the Shift KC director
at ShiftKC.org/partner