



ROGUE RESEARCH LAB

Certificate of Analysis

These test results are for Research and Development purposes only

Page 1 of 1

Hemp Worldwide

Sample

Strain

Purple Fire Indica

.15%	0.00%	30.04
Δ^9 THC	Total CBD	Total Cannabinoids
Not tested	Pass	239.0
Water Activity	Moisture	mg / g Total Cannabinoids

Sample ID

261956405447

Matrix

Flower



Harvest/Prod

Date Report

12/02/2024

Results Valid Until

12/04/2025

Created

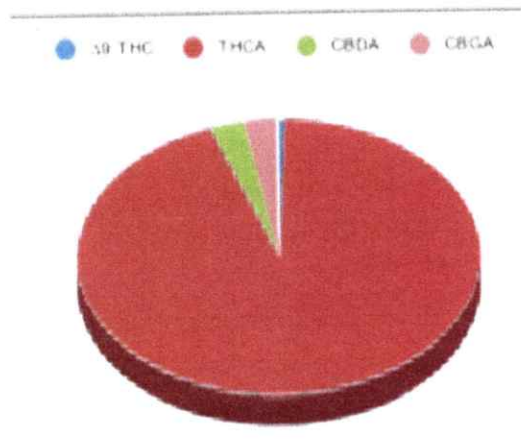
Sample Extracted

Sample Analyzed
12/04/2024

Method SOP LO001-R11

Cannabinoids

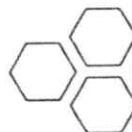
	%Weight	mg/ gram	LOQ(% /w)
Δ^9 THC	0.14	1.4	0.06
THCA	30.04	223.6	0.06
Total THC _{(THCA*0.877)+Δ^9THC}	20.06	200.6	0.06
CBDA	0.31	3.1	0.06
CBD	<LOQ	<LOQ)	0.06
CBN	<LOQ	<LOQ)	0.06
Δ^8 THC	<LOQ	<LOQ)	0.06
CBC	<LOQ	<LOQ)	0.06
CBGA	0.74	7.4	0.06
CBG	<LOQ	<LOQ)	0.06
CBDV	<LOQ	<LOQ)	0.06
CBDVA	<LOQ	<LOQ)	0.06
THCVA	<LOQ	<LOQ)	0.06
CBDQ	<LOQ	<LOQ)	0.06
HHC	<LOQ	<LOQ)	0.09



Total THC and Total CBD are calculated values per OAR 333-064-0100. Cannabinoid values for plant matter samples are reported on a dry weight basis. Water activity action level is 0.65Aw. LOQ= Limit of Quantitation. NR=Not Reported.

rogueresearchlab.com

Craig Berry - Lab Director



ROGUE RESEARCH LAB

Results pertain to submitted samples only. Rogue Research Lab LLC makes no claims as to the consumer safety or other risks associated with any detected or non-detected amounts of any pesticides, solvents or other adulterants. This report shall not be reproduced, unless in its entirety, without written approval from Rogue Research Lab LLC. Samples were received in good condition and all QC samples met acceptance criteria of the method; data available upon request. For informational purposes only.