

SINGLE FAMILY RESIDENCE

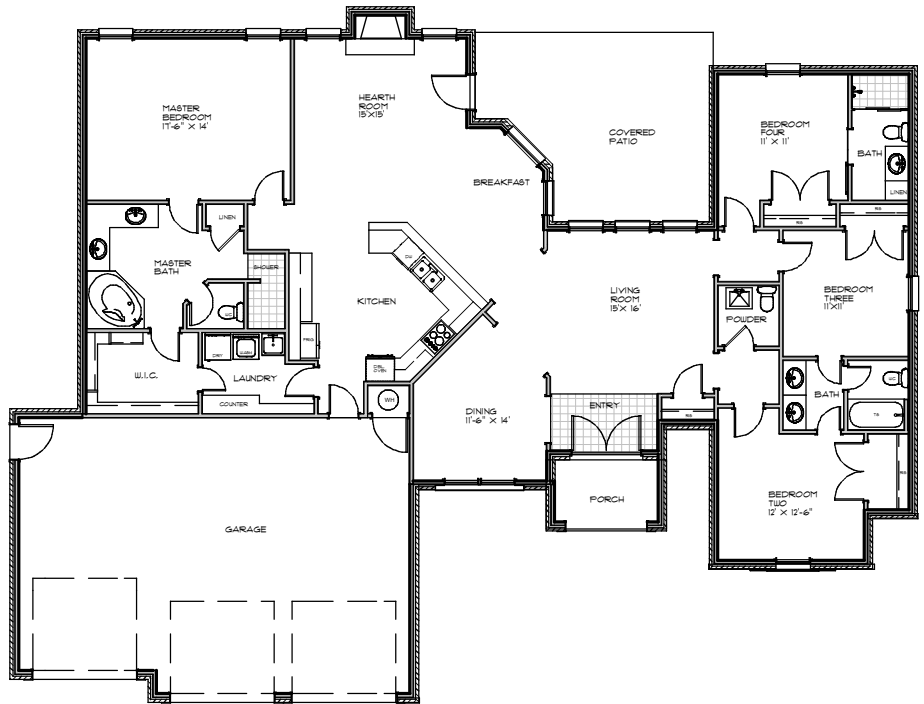
WINSLOW

Style: 1 Story
Foundation: Slab
Bedrooms: 4
Bathrooms: 4



HOUSE PLAN DIMENSIONS

Veneer Sq.Ft.: 2457
Lower Frame Sq.Ft: 2344
Upper Frame Sq.Ft: NA
Total Sq.Ft.: 2457
Max Width: 76'



HOUSE PLAN FEATURES

- 10' Ceilings
- Large Covered Patio
- Large Walk-In
- Shower
- 3 Car Garage
- Formal Dining
- Hearth Room

WHAT'S INCLUDED

- Foundation Plan
- Main Level Plan
- Upper Level Plan
- Elevations
- Roof Plan

ADDITIONAL

- Reverse Plan: N/C
- 2"X6" Exterior Walls \$100.00
- Electrical: \$.05 Sq. Ft.
- Material List: \$300.00
- Alternate Roof Plan: \$200.00

Plan Alterations

PDF file
Plan sets \$550.00

Changes to make this the perfect home

- Increase or decrease size
- Elevation changes
- Foundation changes

Midwest Plan Design gladly accepts any alterations to meet specific desires

Midwest Plan Design Residential Design & Drafting

- Stock Plans
- Custom Plans
- 3-D Views
- Electrical
- Site Plans
- Material List
- Framing Layouts

316-806-2492
405-204-9472
midwestplandesign@cox.n
etidwestplandesign.net

