

SINGLE FAMILY RESIDENCE

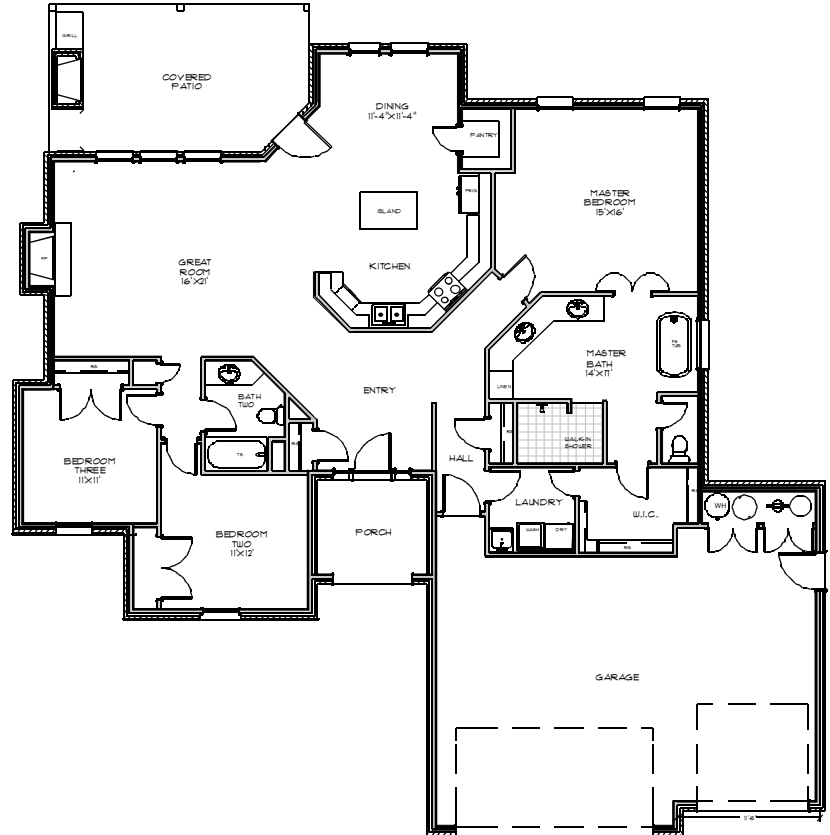
BRISTOL

Style: Ranch
Foundation: Slab
Bedrooms: 3
Bathrooms: 2



HOUSE PLAN DIMENSIONS

Veneer Sq.Ft.: 2022
Lower Frame Sq.Ft.: 1937
Upper Frame Sq.Ft.: N/A
Total Sq.Ft.: 2022
Max Width: 65'3"



HOUSE PLAN FEATURES

- Full Brick Veneer
- 10' Ceilings
- Walk-In Pantry
- Large Covered Patio
- Large Walk-In Shower
- Free Standing Tub
- 3 Car Garage

WHAT'S INCLUDED

- Foundation Plan
- Main Level Plan
- Upper Level Plan
- Elevations
- Roof Plan

ADDITIONAL

- Reverse Plan: N/C
- 2"X6" Exterior Wall \$100.00
- Electrical: \$.05 Sq. Ft.
- Material List: \$300.00
- Alternate Roof Plan: \$200.00

Plan Alterations

PDF file
Plan sets \$550.00

Changes to make this the perfect home

- Increase or decrease size
- Elevation changes
- Foundation changes

Midwest Plan Design gladly accepts any alterations to meet specific desires

**Midwest Plan Design
 Residential Design &
 Drafting**

- Stock Plans
- Custom Plans
- 3-D Views
- Electrical
- Site Plans
- Material List
- Framing Layouts

316-806-2492
405-204-9472
midwestplandesign@cox.net
midwestplandesign.net

