

FZ SLIDER

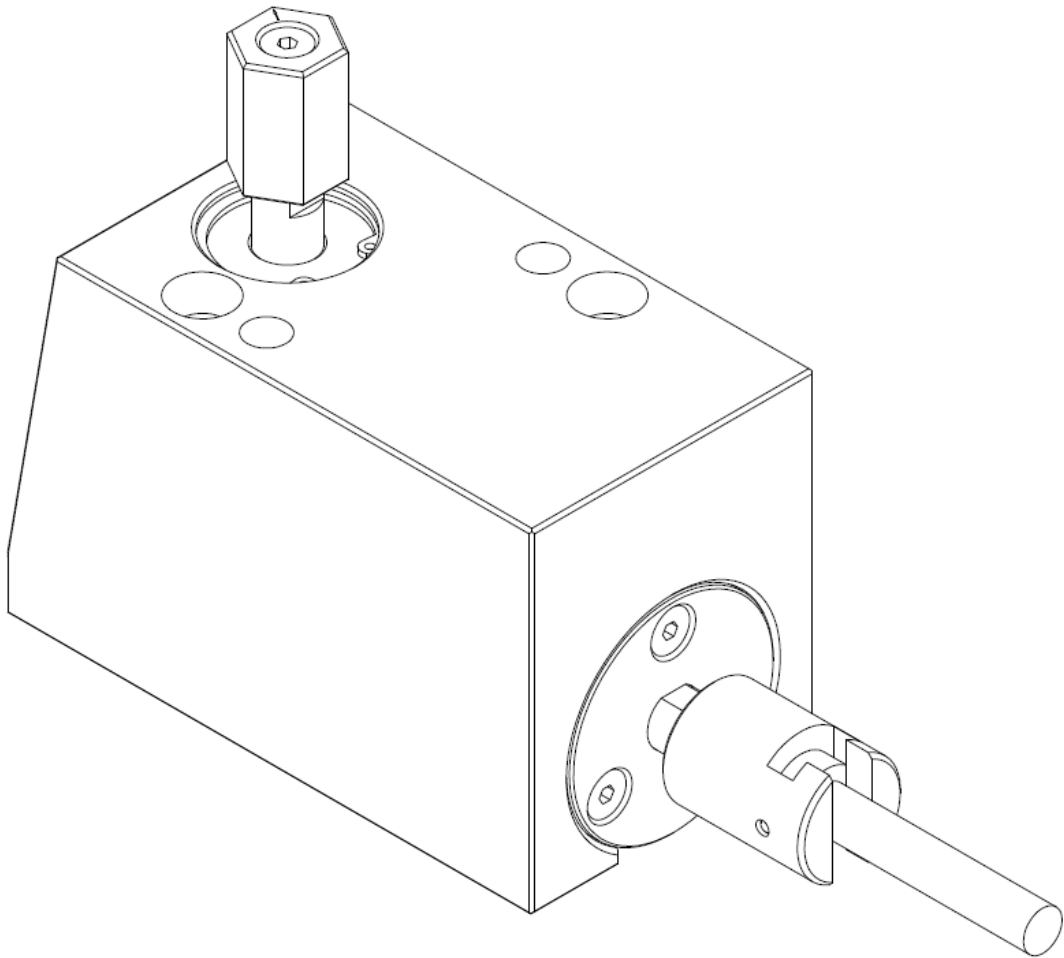


TABLE OF CONTENTS

TOOLS REQUIRED 1

WHATS INCLUDED 1

OVERVIEW 2

INSTALLATION STEPS..... 3

HOW TO TUNE EZ-SLIDER..... 9

HOW TO TUNE LIMIT SWITCH 10

TECHNICAL SPECIFICATIONS 11

LIMIT SWITCH SPECIFICATIONS..... 12

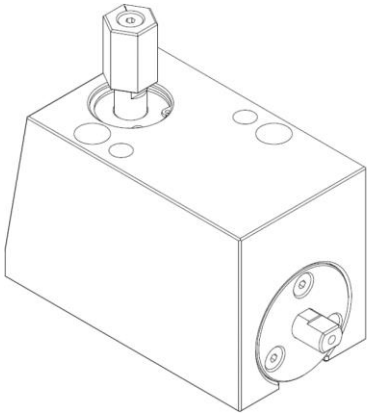
CONSIDERATIONS FOR THE DESIGNER 13

SUPPORT & CUSTOM APPLICATIONS 14

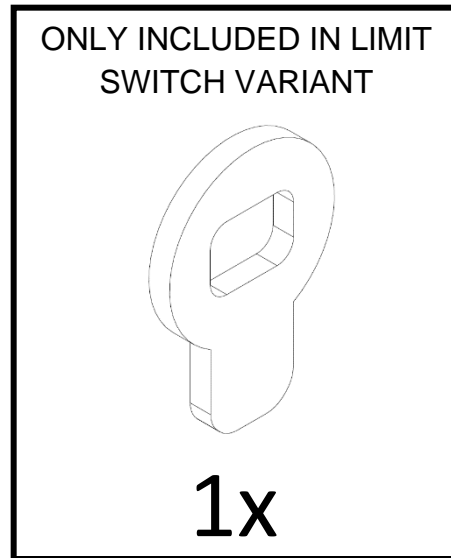
TOOLS REQUIRED

1. 1/8" ALLEN WRENCH
2. 5/32" ALLEN WRENCH
3. 1/4" ALLEN WRENCH

WHAT'S INCLUDED



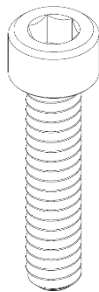
1x



1x



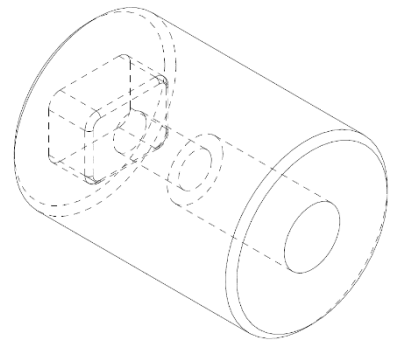
2x



1x

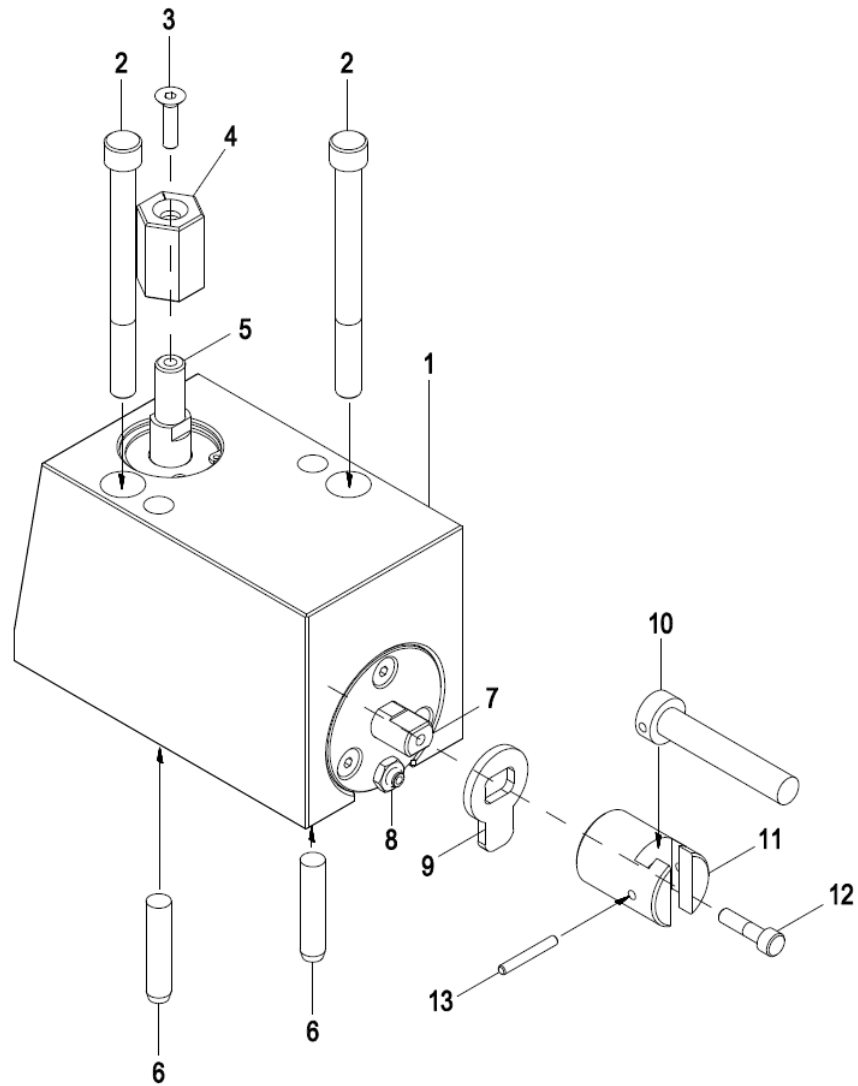


2x



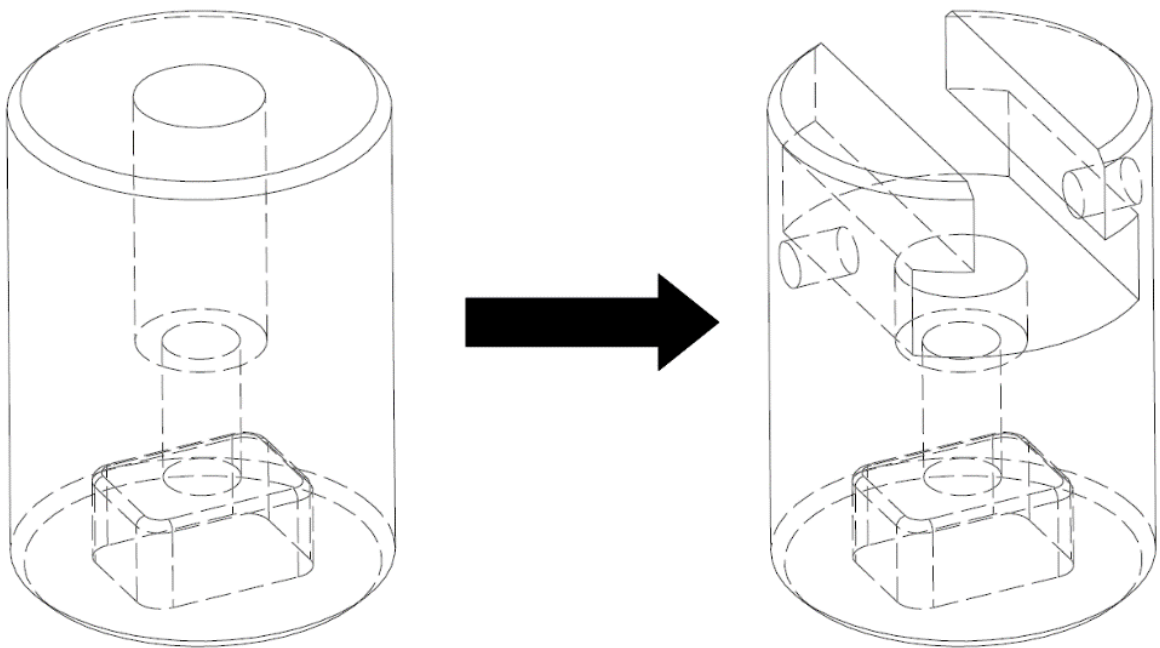
1x

OVERVIEW



PART	DESCRIPTION
1	EZ-SLIDER BODY ASSEMBLY 2.750" x 3.250" x 5.125"
2	MOUNTING SCREW 5/16-18 UNC x 3-1/2 LG.
3	ACTUATOR SCREW #10-24 UNC X 3/4 LG.
4	ACTUATOR
5	HYDRAULIC PISTON
6	ASSEMBLY DOWEL 5/16 x 1-1/2 LG. W/ #10-32 INTERNAL THREAD
7	SPRING PISTON
8	LIMIT SWITCH INCLUDED WITH LIMIT SWITCH VARIANT
9	LIMIT SWITCH TRIGGER PLATE INCLUDED WITH LIMIT SWITCH VARIANT
10	EJECTOR PIN NOT INCLUDED
11	CARRIER Ø1.000" x 1.375" LG.
12	CARRIER SCREW #10-24 UNC x 7/8 LG.
13	EJECTOR PIN RETAINING DOWEL NOT INCLUDED

1

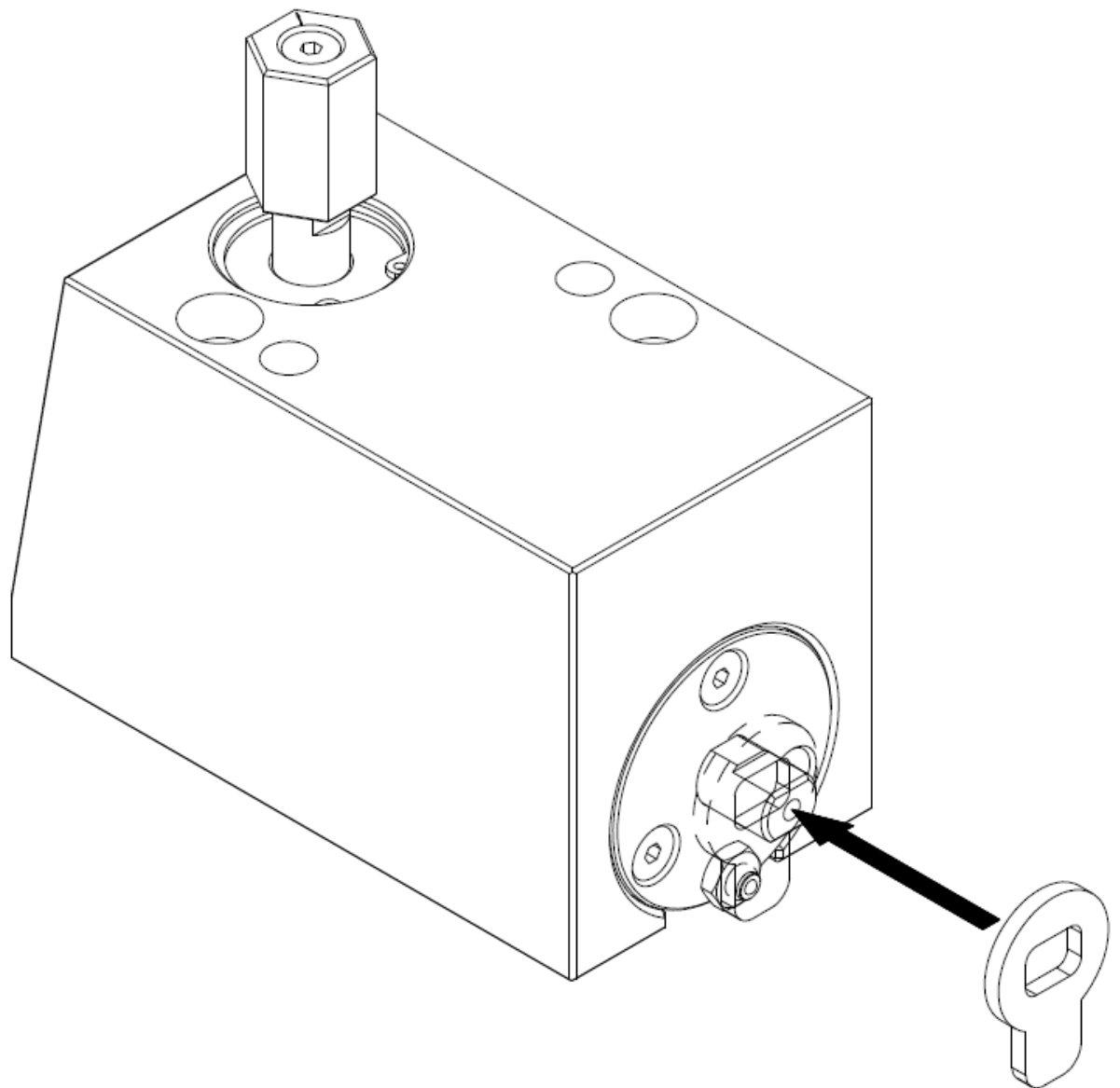


MACHINE SUPPLIED PIN CARRIER TO RETAIN APPROPRIATE
EJECTOR PIN (NOT INCLUDED). LOCKING STYLE TO BE
DETERMINED BY SHOP CUSTOMER.

MINIMUM PIN SIZE $\varnothing 7/32''$

MAXIMUM PIN SIZE $\varnothing 3/8''$

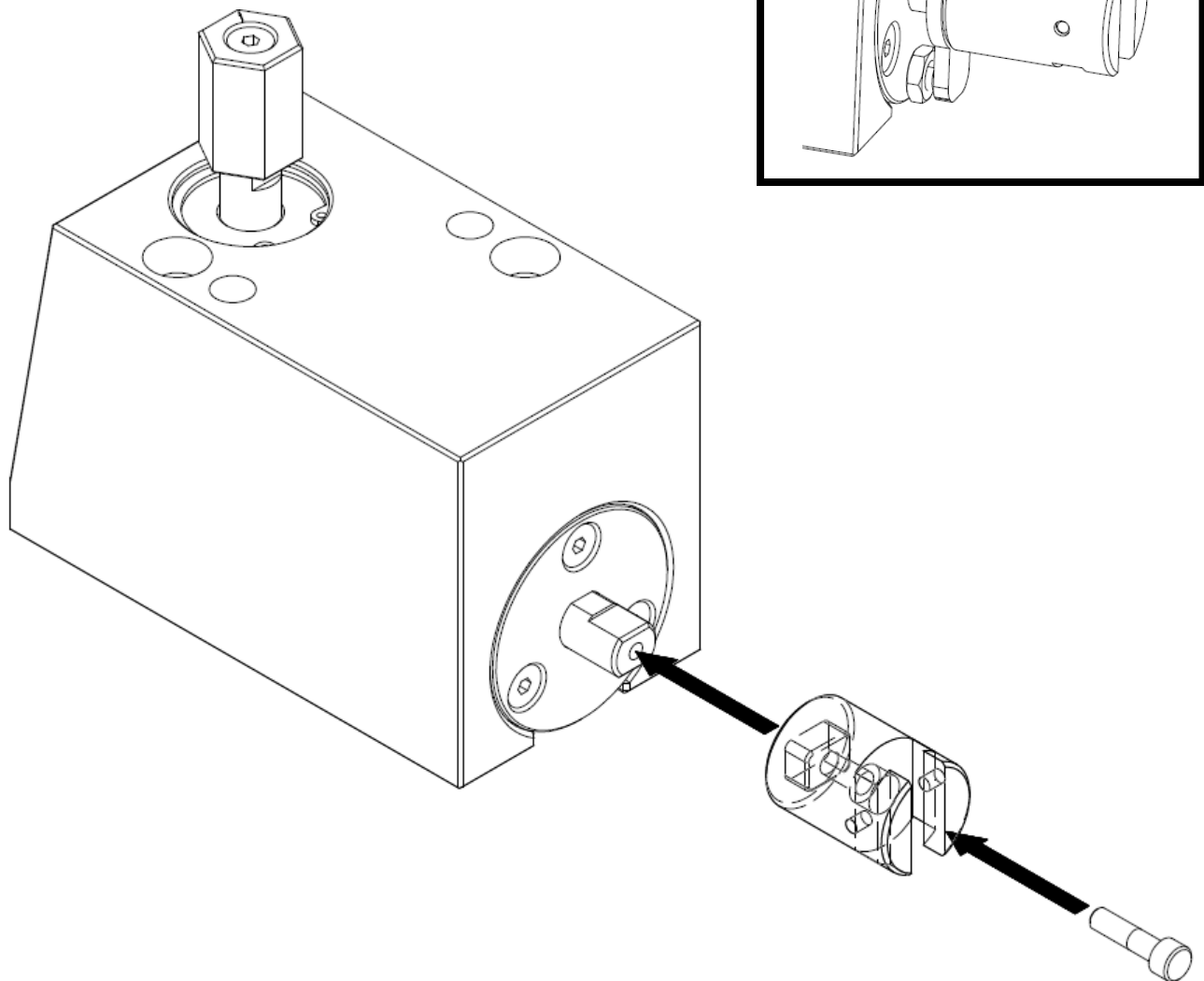
2



PLACE LIMIT SWITCH TRIGGER PLATE ON PISTON ROD

NOTE: SKIP THIS STEP IF LIMIT SWITCH VARIANT NOT PURCHASED

3

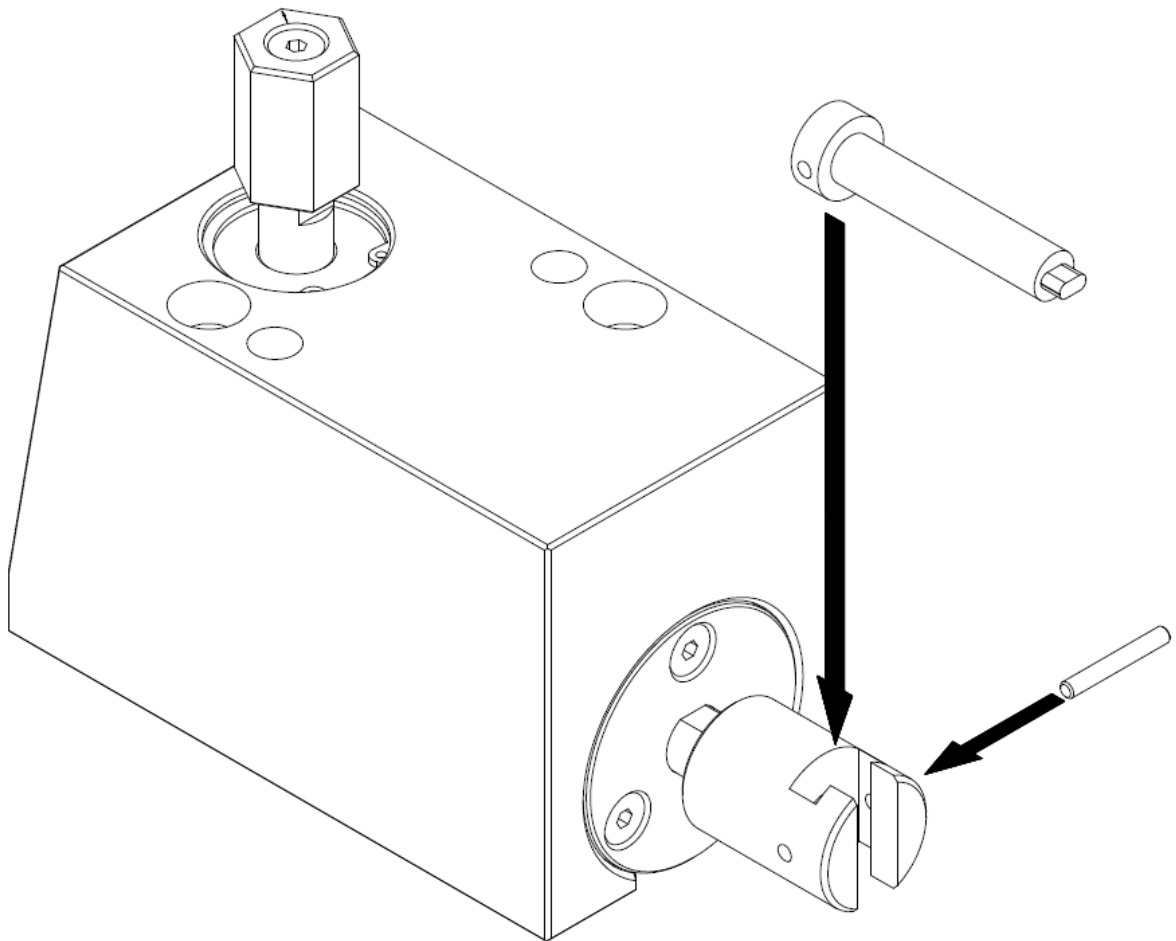


FASTEN CARRIER TO PISTON ROD USING #10-24 x 7/8" SHCS (INCLUDED)

USING LOCTITE ON THIS SCREW IS RECOMMENDED

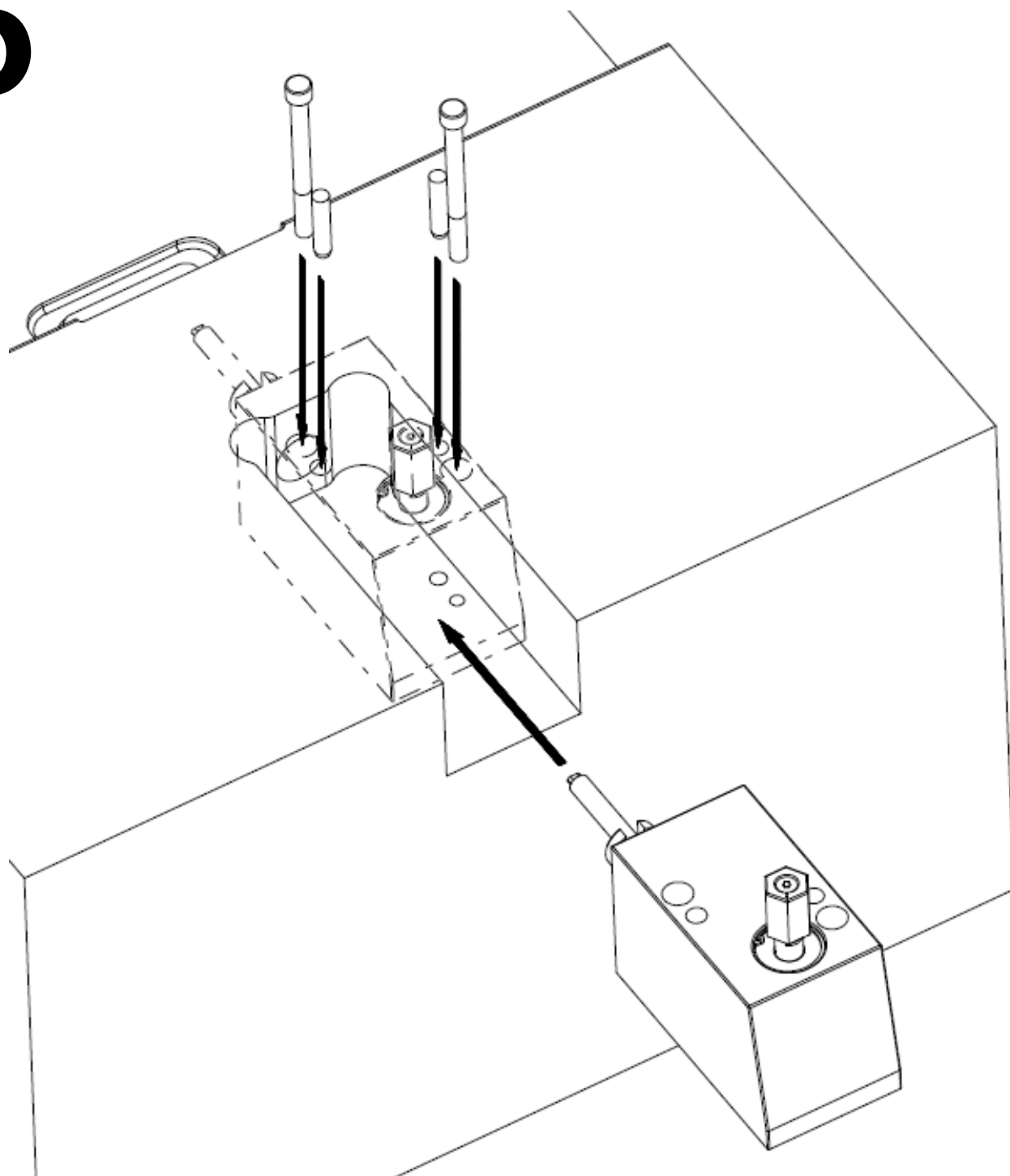
NOTE: CARRIER WILL SECURE LIMIT SWITCH TRIGGER PLATE TO ROD

4



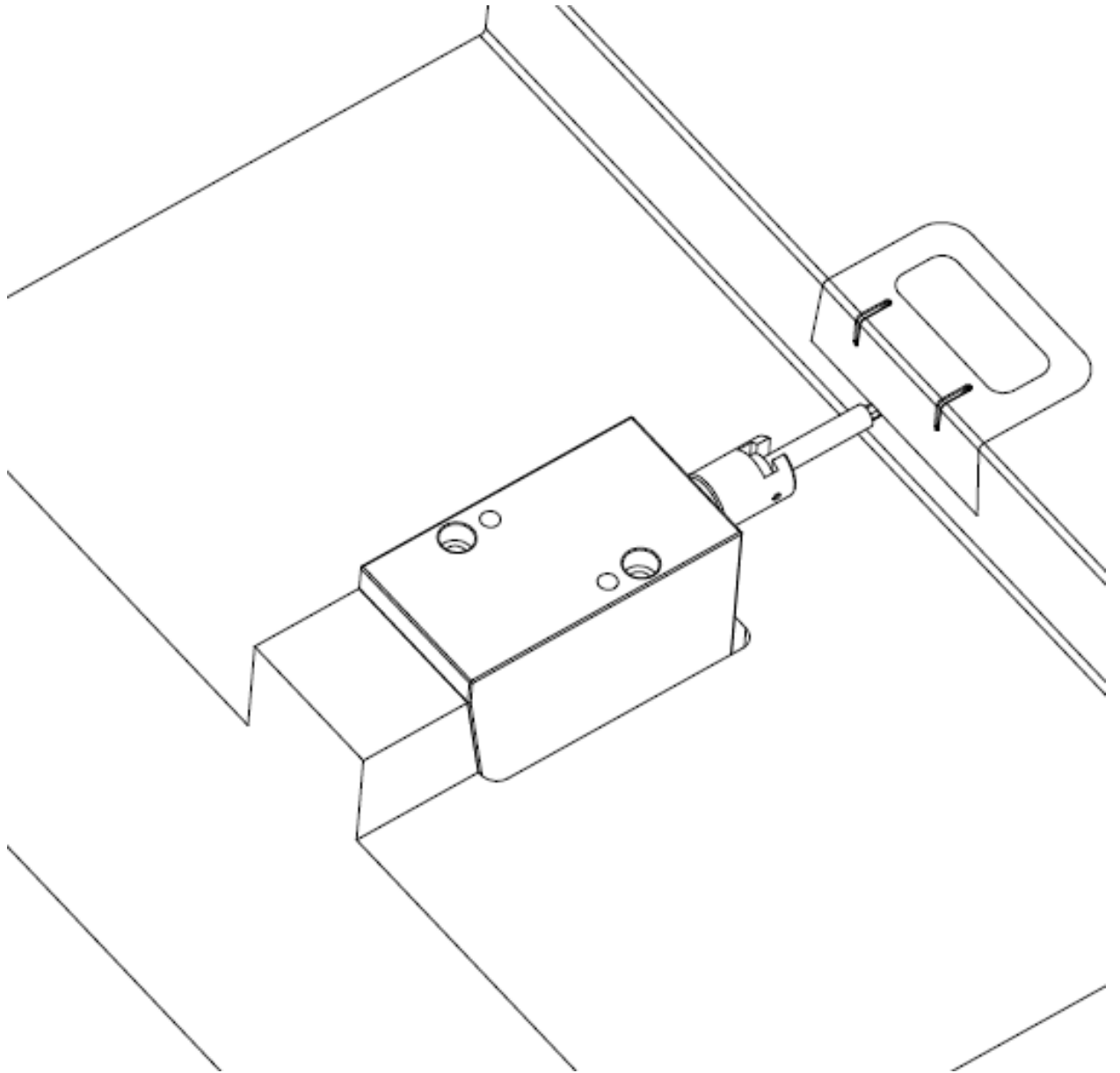
INSTALL AND RETAIN FINISH MACHINED EJECTOR PIN
(EJECTOR PIN AND HARDWARE NOT INCLUDED)

5



INSERT EZ-SLIDER ASSEMBLY INTO CORE POCKET AND USE
SUPPLIED FASTENERS AND DOWELS TO FASTEN TO CORE

6

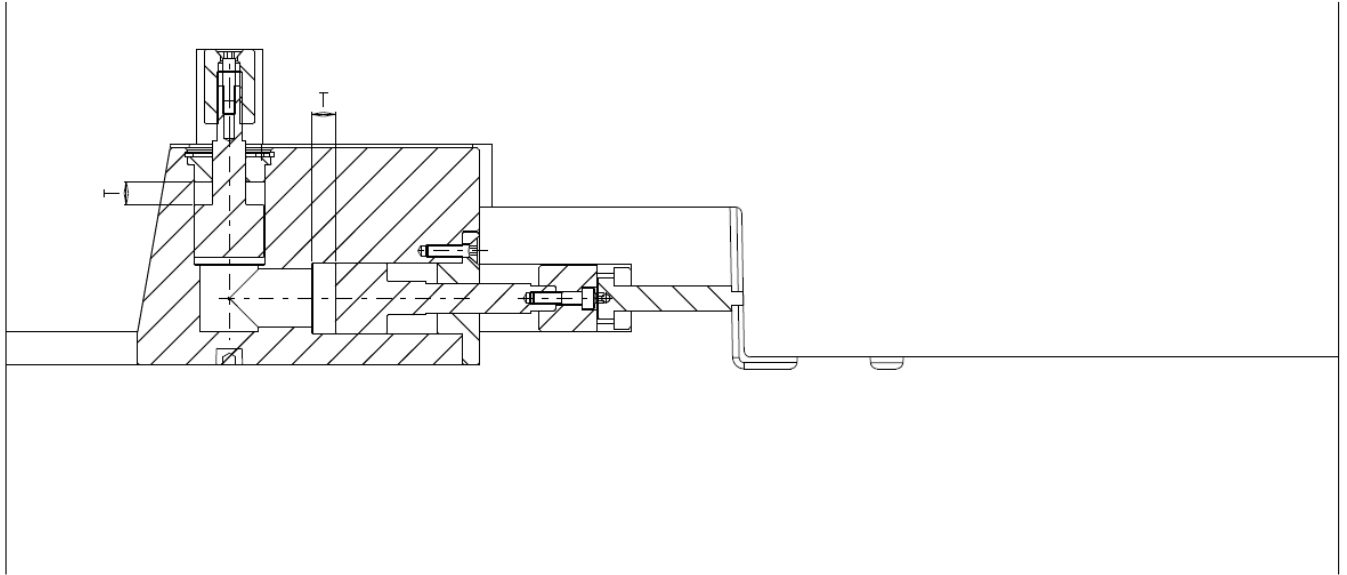


CUT CAVITY POCKET TO ACCEPT THE EZ-SLIDER ASSEMBLY AND ACHIEVE PROPER STROKE WITHIN SUPPLIED PARAMETERS. (pg.9)

HOW TO TUNE EZ-SLIDER

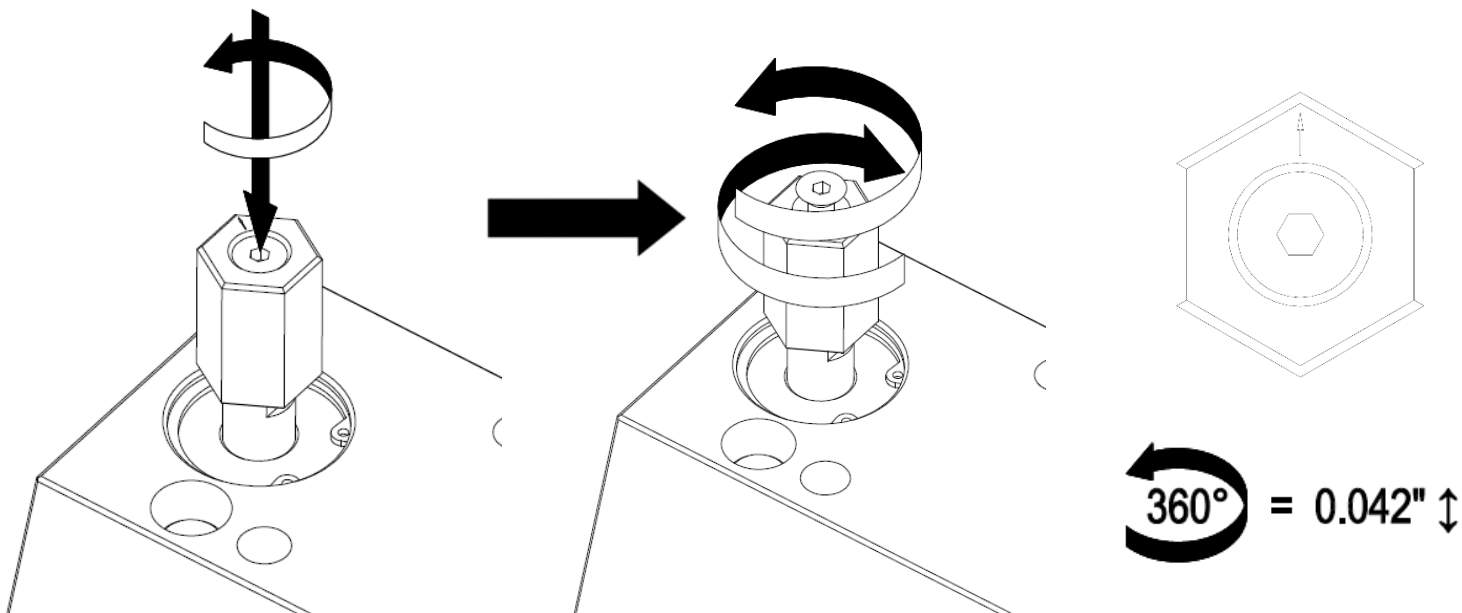
T = TRAVEL

TRAVEL DICTATED BY ACTUATOR AND CARRIER POCKET DEPTH, CAN BE FINE TUNED WITH ACTUATOR NUT.



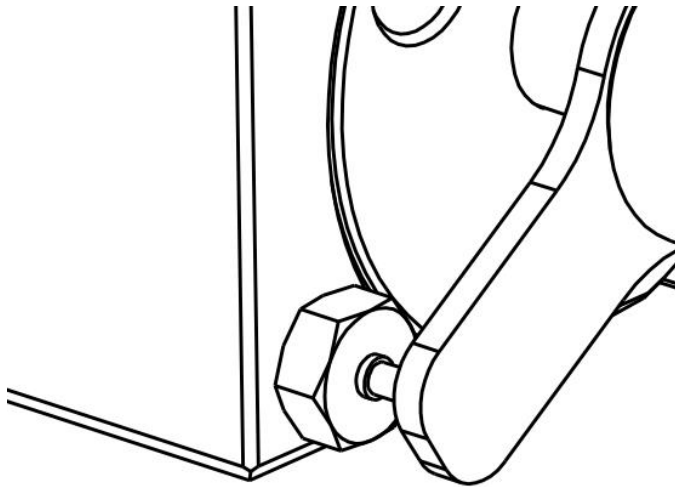
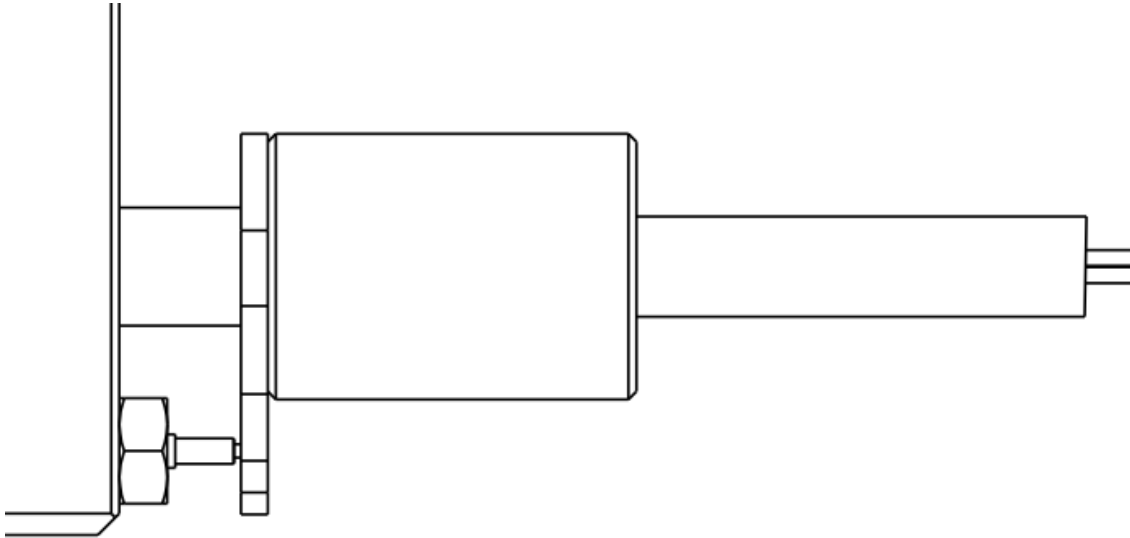
NOTE: DO NOT EXCEED TRAVEL STATED IN TECHNICAL SPECIFICATIONS (pg. 11)

FINE TUNE TRAVEL DISTANCE BY LOOSENING ACTUATOR NUT SCREW AND ROTATE ACTUATOR NUT. USE ORIENTATION ARROW TO AID IN TUNING PROCESS.



HOW TO TUNE LIMIT SWITCH

ALL EZ-SLIDERS COME TUNED. IF NEEDED ADVANCE OR RETRACT LIMIT SWITCH USING NYLON HEX BOLT UNTIL THE PLUNGER TOUCHES TRIGGER PLATE.



$$1x \quad 360^\circ = 0.039"$$

ONCE PLUNGER HAS MADE CONTACT WITH TRIGGER PLATE, ADVANCE LIMIT SWITCH ONE MORE FULL TURN TO ENGAGE SWITCH (DETAIL B).

TECHNICAL SPECIFICATIONS

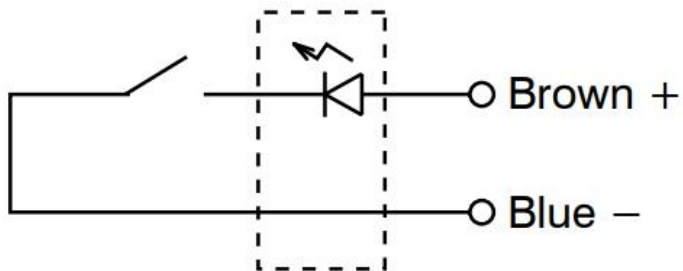
EZ SLIDER	VARIANT	
	BLUE	GOLD
BODY MATERIAL	4140	
BODY SIZE	2.750" x 3.250" x 5.125"	
MAX STROKE	0.350"	0.225"
PRESSURE AT START OF STROKE	67.5 LBS	256.5 LBS
PRESSURE AT END OF SROKE	225 LBS	641 LBS
WEIGHT	13 LBS	
MAXIMUM INJECTION PRESSURE	12500 LBS	

LIMIT SWITCH SPECIFICATIONS

ENVIRONMENTAL RATINGS	
OPERATING TEMPERATURE RANGE	-55/+125°C
MECHANICAL RATINGS	
SHELL MATERIAL	Brass Alloy
SHELL PLATING	20 μ" Gold over Nickel
MAX STROKE	.090" (2.286mm)
DURABILITY	1,000,000 Cycles @ Mid Stroke
ELECTRICAL RATINGS	
MAXIMUM CURRENT	12A
CONTACT VOLTAGE	5-24VDC
CONTACT RESISTANCE	20mΩ Max
WIRE INCLUDED	16 AWG

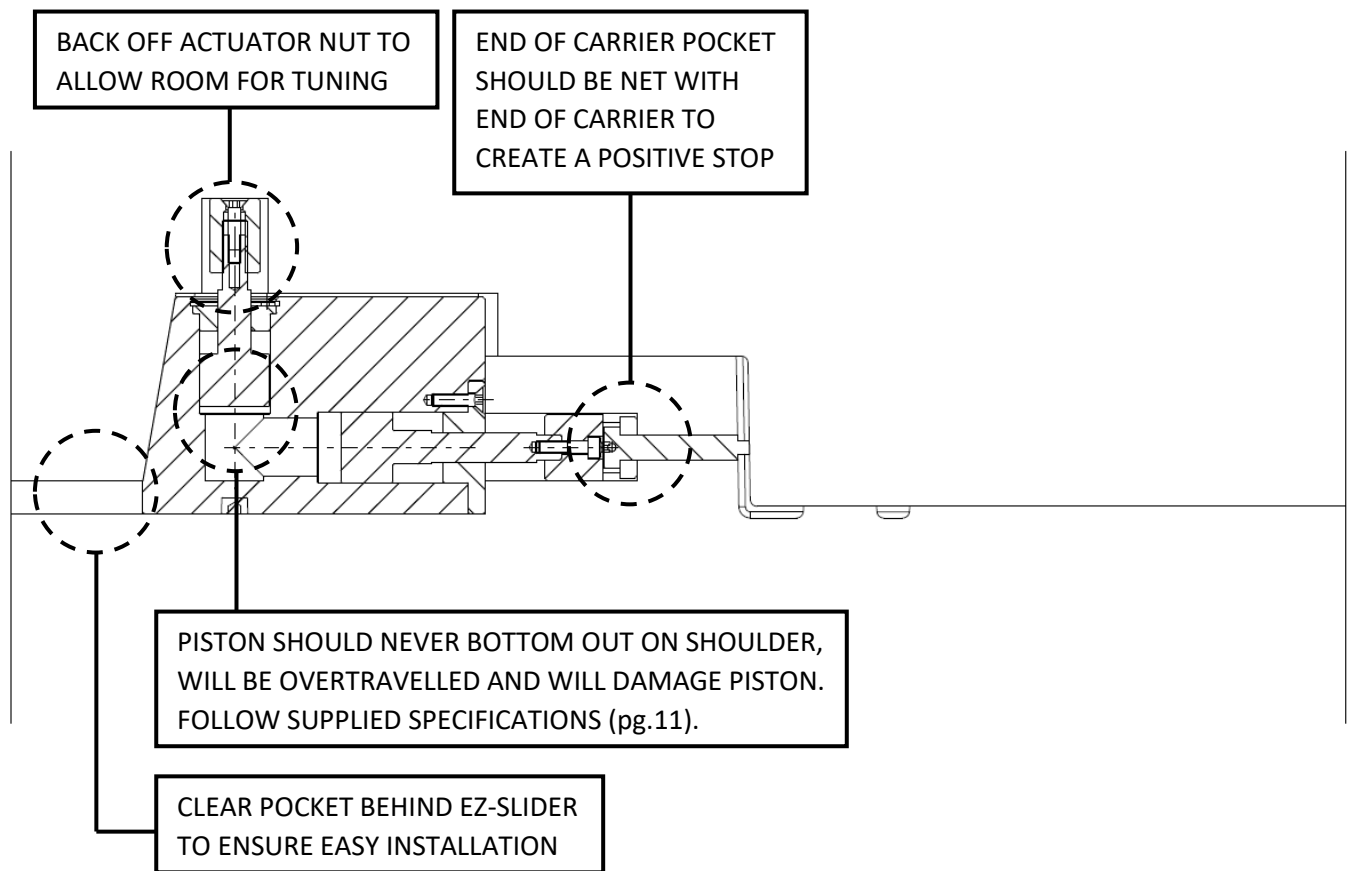
CIRCUIT DIAGRAM

Normally open (NO)



LED Normally Off

CONSIDERATIONS FOR THE DESIGNER



**CALL OR EMAIL FOR ADDITIONAL INFORMATION
REGARDING THE EZ-SLIDER & CUSTOM
APPLICATIONS**



✉ **1-866-988-0303**

☎ **sales@ezslider.co**

🌐 **www.ezslider.co**

📍 **2705 Kew Drive**

Windsor, ON N8T 3B7