



Recycling Transformation: Driving Sustainability with NetSuite

TABLE OF CONTENTS

- 1 INTRODUCTION
- 2 CHAPTER 1: THE ROLE OF ERF IN RECYCLING AND SUSTAINABILITY
- 3 CONCLUSION OF CHAPTER 1
- 4 CHAPTER 2: STREAMLINING RESOURCE MANAGEMENT WITH NETSUITE
- 5 CONCLUSION OF CHAPTER 2
- 6 CHAPTER 3: COMPLIANCE AND SUSTAINABILITY REPORTING
- 7 CONCLUSION OF CHAPTER 3
- 8 CHAPTER 4: ENGAGING CUSTOMERS AND COMMUNITIES
- 9 CONCLUSION OF CHAPTER 4
- 10 CONCLUSION
- 11 FINAL THOUGHTS



INTRODUCTION

Welcome to "Recycling Transformation: Driving Sustainability with NetSuite," a definitive guide designed to empower businesses to elevate their recycling initiatives and integrate advanced sustainability practices into their operations. This eBook caters to executives, environmental officers, and operational managers who are actively seeking to enhance their company's environmental impact through efficient recycling processes and who need robust tools to manage these efforts effectively.

In today's global economy, the emphasis on environmental responsibility is greater than ever. Businesses across various industries are not only expected to comply with increasingly stringent environmental regulations but are also driven by a corporate and consumer demand to lead in sustainability. Effective recycling processes are central to these efforts, involving complex tasks such as material tracking, resource management, compliance, and engagement with customers and vendors.

NetSuite's ERP system emerges as a powerful ally in this context, offering a suite of tools that streamline recycling operations, enhance data accuracy, and improve decision-making through real-time insights. Whether your business is in manufacturing, retail, or services, understanding and managing the flow of recyclable materials, optimizing logistics, and maintaining compliance are essential components of a successful recycling strategy.



This guide will delve deep into the capabilities of NetSuite as it applies to recycling operations:

Chapter 1 outlines the fundamental role of ERP systems in supporting recycling operations and introduces NetSuite's specific capabilities.

Chapter 2 explores how NetSuite streamlines complex recycling processes, from material intake to final processing.

Chapter 3 discusses compliance with environmental regulations and how NetSuite facilitates robust sustainability reporting.

Chapter 4 focuses on enhancing engagement with customers and vendors, crucial for successful recycling initiatives.

Chapter 5 illustrates how leveraging NetSuite's advanced analytics can drive continuous improvement in recycling operations.

By the end of this eBook, you will have a comprehensive understanding of how integrating NetSuite can transform your recycling processes, helping your company not only meet but exceed its sustainability goals. "Recycling Transformation: Driving Sustainability with NetSuite" is your roadmap to deploying an ERP solution that supports not just your business operations but also your commitment to a more sustainable and responsible business model. Join us on this journey to unlock new levels of operational efficiency and environmental stewardship.



Chapter 1: The Role of ERP in Recycling and Sustainability

Understanding the essential role of Enterprise Resource Planning (ERP) systems in enhancing recycling and sustainability efforts is crucial for businesses aiming to improve their environmental impact. NetSuite, as a comprehensive ERP solution, offers a range of capabilities that support the unique needs of recycling operations. This chapter delves into the basics of the circular economy, recycling operations, and how NetSuite can be leveraged to support these initiatives effectively.

🔗 Fundamentals of Recycling Operations

Recycling operations are integral to the circular economy, which focuses on minimizing waste and making the most of resources. This process involves several key stages:

Collection and Sorting

Gathering materials that can be recycled and sorting them into categories for processing. Accuracy and efficiency in this phase are crucial for the quality of the recycled output.

Processing and Manufacturing

Converting sorted materials into usable raw materials or products. This stage requires precise tracking and quality control to ensure that outputs meet industry standards.

Distribution and Consumption

Distributing recycled materials or products to manufacturers or directly to consumers. Effective logistics and supply chain management are essential here to maximize the reach and impact of recycling efforts.

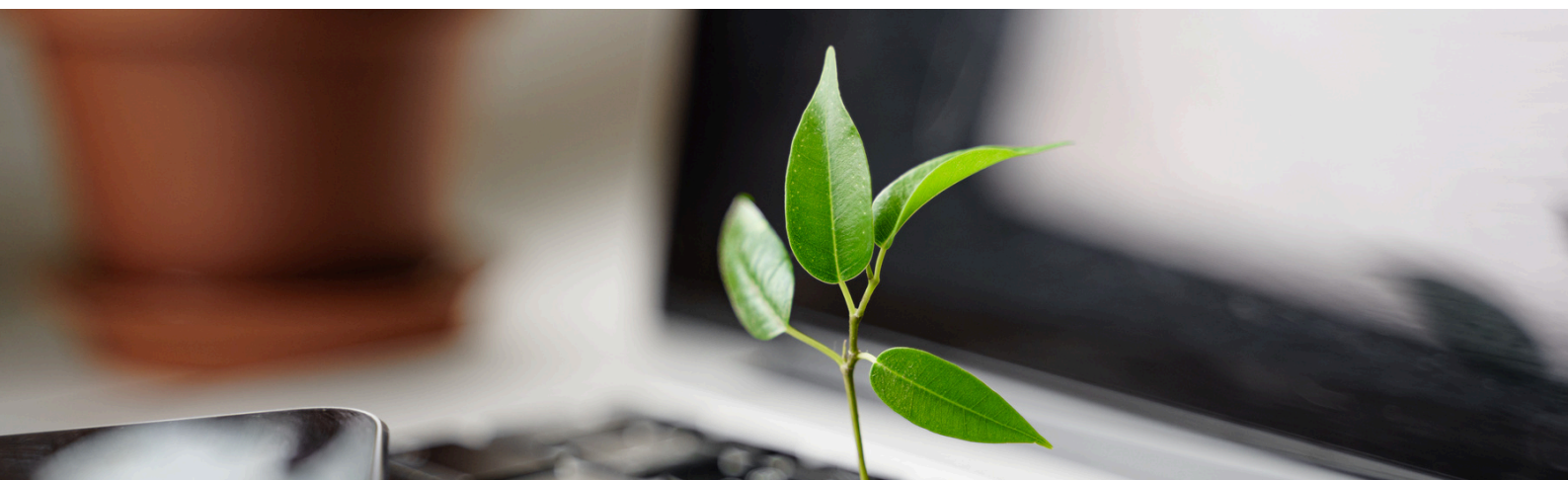
🔗 NetSuite's Capabilities for Supporting Recycling

Integrated Data Management:

- NetSuite provides a unified platform to manage all data related to recycling processes. This integration allows for seamless tracking of materials from collection through to recycling and redistribution, ensuring data accuracy and real-time visibility.

Process Optimization:

- **Workflow Automation:** NetSuite automates workflows across various stages of recycling operations, from material collection schedules to inventory management and billing. This automation increases operational efficiency and reduces the potential for errors.
- **Resource Allocation:** Effective management of resources, including human resources, vehicles, and equipment, is facilitated through NetSuite's resource planning tools. These tools help optimize the use of assets, reduce costs, and improve service delivery.



Regulatory Compliance and Reporting:

- Recycling operations must adhere to numerous environmental regulations. NetSuite helps ensure compliance by maintaining detailed records, facilitating audits, and generating compliance reports automatically. This capability is crucial for avoiding penalties and building trust with stakeholders.

Scalability and Flexibility:

- As recycling initiatives grow, the complexity of operations can increase. NetSuite's scalable solution adapts to changing business sizes and needs without compromising performance. Additionally, its flexibility allows businesses to customize features and functionalities to meet specific recycling requirements.

Conclusion of Chapter 1:

In the context of the circular economy, ERP systems like NetSuite play a pivotal role in enabling businesses to manage their recycling operations effectively. By providing tools for integrated data management, process optimization, regulatory compliance, and scalability, NetSuite supports businesses in their efforts to enhance sustainability and operational efficiency. This chapter sets the stage for a deeper exploration of how these capabilities can be practically applied to streamline operations, ensure compliance, and engage stakeholders in subsequent chapters of this eBook.



Chapter 2: Streamlining Resource Management with NetSuite

Effective management of resources is crucial for recycling operations, where efficiency and sustainability are paramount. NetSuite provides an integrated platform that enables businesses to optimize resource usage, reduce waste, and enhance the efficiency of recycling processes. This chapter explores how NetSuite can be utilized to manage inventory, optimize supply chain operations, and extend product lifecycles, all of which are fundamental to successful recycling initiatives.

Optimizing Inventory and Material Tracking

Real-Time Inventory Management:

- NetSuite's inventory management system offers real-time tracking capabilities that allow businesses to monitor the quantities and locations of recyclable materials and processed goods. This functionality helps prevent inventory overstock or shortages, ensuring that resources are adequately balanced according to demand.
- The system supports the identification and separation of materials based on quality, type, or other relevant criteria, which is critical for maintaining the integrity of recycled products.

Enhanced Material Resource Planning (MRP):

- NetSuite's MRP tools help businesses forecast demand based on historical data and current market trends. This predictive capability enables proactive management of material procurement and processing schedules, optimizing operations and reducing unnecessary expenditure on storage and handling.
- Integration with procurement and supply chain modules ensures that purchasing decisions are informed by up-to-date inventory levels and projected needs, enhancing overall supply chain responsiveness.

Supply Chain Transparency and Efficiency

Vendor Management and Collaboration:

- Effective management of relationships with suppliers of recyclable materials is crucial. NetSuite facilitates deeper collaboration with vendors through shared systems that offer transparency and real-time communication. This ensures a steady and reliable flow of needed materials and fosters trust and cooperation between parties.
- The system also allows for the tracking of vendor performance metrics, ensuring that suppliers meet agreed-upon standards and timelines, which is essential for uninterrupted recycling operations.

Logistics and Distribution Optimization:

- NetSuite helps streamline logistics operations by optimizing routes and schedules for the collection and distribution of recyclable materials. This not only reduces transportation costs but also minimizes the carbon footprint associated with these activities.
- Features such as integrated fleet management and GPS tracking enable precise control over the transport processes, improving delivery efficiency and reducing delays.



SUPPLY CHAIN

RETAILER
LOGISTICS
CONSUMER



Extending Product Lifecycles

Lifecycle Management Tools:

- NetSuite supports the extension of product lifecycles by facilitating the repair, refurbishment, and resale of used products. This not only reduces waste but also taps into markets for refurbished goods, opening new revenue streams.
- The system can manage entire workflows around refurbishment processes, from initial assessment to final sales, ensuring products meet quality standards before re-entering the market.

Conclusion of Chapter 2:

NetSuite's capabilities for managing resources, optimizing supply chains, and extending product lifecycles are essential for businesses engaged in recycling operations. By leveraging these tools, companies can enhance operational efficiencies, reduce costs, and improve their sustainability footprint. This chapter has outlined how integrating NetSuite helps recycling businesses maintain a competitive edge by ensuring that resources are used effectively and that processes contribute positively to environmental sustainability goals.

Chapter 3: Compliance and Sustainability Reporting

For recycling and sustainability-focused businesses, maintaining compliance with environmental regulations and effectively reporting on sustainability initiatives are critical components of operations. NetSuite provides robust tools designed to ensure that companies can meet these requirements while also demonstrating their commitment to sustainability. This chapter explores how NetSuite aids in navigating complex compliance landscapes and enhancing transparency in sustainability reporting.

Regulatory Compliance Management

Automated Compliance Tracking:

- NetSuite simplifies compliance with environmental regulations by automating the tracking and reporting of necessary data. This includes waste management logs, hazardous material handling records, and emissions data, ensuring all information is accurate and readily available for regulatory review.
- The system can be configured to alert management to potential compliance issues before they become problematic, allowing for preemptive action to rectify any discrepancies.

Document Management and Audit Trails:

- Maintaining a comprehensive record of compliance-related documents is essential for audits and inspections. NetSuite provides secure document management capabilities that organize and store all compliance documents in a centralized repository, accessible to authorized personnel.
- Audit trails are automatically generated for all relevant transactions and operations, providing clear evidence of compliance and making audit processes smoother and less prone to error.

Sustainability Metrics and Reporting

Real-Time Sustainability Dashboards:

- NetSuite offers customizable dashboards that can display real-time data on key sustainability metrics, such as energy consumption, water usage, waste generation, and recycling rates. These dashboards provide ongoing insights into the company's environmental impact, enabling continuous monitoring and management.
- The visual representation of sustainability performance helps businesses quickly assess their achievements and identify areas needing improvement, aligning with their environmental goals and policies.

Detailed Environmental Reporting:

- Producing detailed environmental reports is essential not only for compliance but also for communicating with stakeholders about the company's sustainability efforts. NetSuite enables the generation of comprehensive reports that can detail everything from carbon footprints to the effectiveness of recycling programs.
- These reports can be tailored to the needs of different stakeholders, including regulatory bodies, customers, investors, and internal management, ensuring that all parties receive relevant and accurate information.



Enhancing Compliance through Integration

Integrated Compliance Framework:

- NetSuite's integrated ERP system ensures that compliance is not a standalone activity but is embedded into all relevant processes. This holistic approach means that compliance considerations are automatically factored into operations, from procurement and production to distribution and sales.
- Integration ensures that compliance data flows seamlessly across departments, enhancing coordination and reducing the risk of non-compliance due to miscommunication or data silos.

Conclusion of Chapter 3:

By utilizing NetSuite's comprehensive tools for compliance management and sustainability reporting, recycling businesses can ensure they meet regulatory requirements while advancing their sustainability objectives. This chapter has highlighted how NetSuite's capabilities support rigorous environmental compliance, enable robust sustainability reporting, and integrate these elements into the broader operational framework. As businesses continue to face increasing scrutiny regarding their environmental impact, the ability to accurately track, manage, and report on sustainability practices becomes not just a regulatory necessity but a strategic advantage. NetSuite provides the tools necessary to achieve these goals, ensuring businesses can continue to lead in sustainability and compliance.

Chapter 4: Engaging Customers and Communities

In the context of recycling and sustainability, engaging effectively with customers and communities is not just a strategy for business growth but also a method to amplify environmental impact. NetSuite offers comprehensive tools that enable businesses to enhance these interactions, fostering greater involvement and commitment to sustainability initiatives. This chapter explores how NetSuite can be leveraged to deepen customer relationships and engage with communities in meaningful ways.

Customer Engagement in Recycling Initiatives

Educational Campaigns and Awareness:

- NetSuite's CRM system allows for the creation and management of targeted campaigns that educate customers about the importance of recycling and the specific initiatives the company is undertaking. These campaigns can include informative content delivered via email, social media, or directly through customer portals.
- By raising awareness and informing customers about how they can participate in or benefit from recycling programs, companies can increase engagement and foster a culture of sustainability.

Reward and Incentive Programs:

- To encourage active participation in recycling efforts, businesses can use NetSuite to manage reward and incentive programs. These programs can be customized to acknowledge and reward customers for sustainable behaviors such as returning products for recycling or choosing recycled products.
- NetSuite's flexible configuration allows businesses to track customer participation, manage reward distributions, and analyze the effectiveness of these programs in real-time, making adjustments as necessary to maximize participation.

Community Collaboration and Support

Partnerships with Local Organizations:

- NetSuite helps manage partnerships with local community organizations, non-profits, and educational institutions that are also engaged in sustainability efforts. Through the ERP system, businesses can coordinate joint initiatives, share resources, and streamline communications, increasing the reach and impact of recycling programs.
- Effective management of these partnerships ensures that community resources are used efficiently and that initiatives are aligned with local needs and values, strengthening community support.

Event Management and Volunteer Coordination:

- Organizing community events such as clean-ups, recycling workshops, or educational seminars is an effective way to engage the public. NetSuite can assist in managing these events, from planning and logistics to participant registration and post-event analysis.
- The system also supports volunteer coordination, enabling businesses to recruit, schedule, and communicate with volunteers who are critical to the success of community-based initiatives.



Enhancing Transparency and Trust

Transparent Reporting and Communication:

- Transparency is key to building trust with customers and communities. NetSuite enables businesses to create and share reports that detail sustainability efforts, recycling results, and community involvement activities.
- Regular updates and open communication about the progress and outcomes of recycling initiatives help maintain public trust and encourage ongoing engagement, reinforcing the company's commitment to sustainability.

Conclusion of Chapter 4:

Engaging customers and communities effectively is crucial for recycling businesses aiming to expand their impact. NetSuite provides the tools necessary to educate, incentivize, and involve various stakeholders in sustainability efforts. This chapter has demonstrated how businesses can use NetSuite to strengthen customer relationships and foster community involvement, turning these engagements into pivotal elements of their sustainability strategy. Through NetSuite, companies can ensure that their recycling initiatives are not only visible and transparent but also supported by a broad base of engaged and committed participants.



CONCLUSION: Harnessing the Power of NetSuite for Sustainable Recycling Practices

Throughout "Recycling Transformation: Driving Sustainability with NetSuite," we have explored how NetSuite's comprehensive ERP system provides essential tools for companies committed to improving their recycling operations and achieving sustainability goals. From optimizing resource management and enhancing regulatory compliance to engaging customers and the community, NetSuite equips businesses with the capabilities needed to effectively manage and expand their recycling initiatives.

🔗 **Integrated Business Solutions:**

NetSuite offers a unified platform that integrates various aspects of business operations, making it easier for companies to manage complex recycling processes. By centralizing data and processes, businesses can achieve greater operational efficiency, reduce costs, and improve data accuracy—key factors in successful recycling operations.

🔗 **Strategic Decision-Making:**

The real-time data and advanced analytics provided by NetSuite empower businesses to make informed decisions that align with their sustainability objectives. Companies can utilize these insights to refine their recycling processes, anticipate market changes, and strategically allocate resources, ensuring that they remain adaptive and competitive in a rapidly evolving environmental landscape.

🔗 **Enhanced Customer and Community Engagement:**

NetSuite's CRM and community engagement tools enable businesses to build strong relationships with both customers and local communities. By fostering greater involvement and transparency in recycling efforts, companies can enhance their reputation, encourage sustainable behaviors, and create a more significant impact on environmental conservation.

🔗 **Scalability and Flexibility:**

As businesses grow and their recycling needs evolve, NetSuite's scalable ERP solution adapts to these changes without sacrificing performance or functionality. Its flexibility allows companies to customize and extend their systems to meet new challenges and opportunities, ensuring that they can continue to innovate and improve their sustainability practices over time.

🔗 **Sustainability Reporting and Compliance:**

NetSuite simplifies the complexities of compliance and reporting, making it easier for companies to meet regulatory requirements and communicate their achievements. With robust reporting tools and compliance tracking, businesses can not only maintain their operational legitimacy but also demonstrate their commitment to sustainable practices to stakeholders and regulatory bodies.



Final Thoughts:

"Recycling Transformation: Driving Sustainability with NetSuite" serves as a comprehensive guide for businesses looking to leverage an ERP system that supports and enhances their recycling and sustainability initiatives. By adopting NetSuite, companies not only streamline their operations but also contribute positively to environmental conservation, setting a standard for responsible business practices in their industries.

As you consider implementing NetSuite, remember that the success of such initiatives often depends on a clear strategy, commitment from all levels of the organization, and ongoing evaluation and adaptation of the system. With NetSuite, businesses have the opportunity to transform their operations, drive sustainable growth, and achieve a lasting impact on both the environment and society.





CEBA
S O L U T I O N S

ORACLE
NETSUITE
Solution Provider