



Adventure to **THE KRUGER NATIONAL PARK**

*Experience the amazing Kruger National Park with Namaqua
Tours!*



Tour Information



Depart: Pretoria

End: Pretoria

Type: Luxury bus transport & Lodge accommodation

Reference: KNP12/2

2026 Tour Price:

Sharing (per person): R35 000

Single (per person): R37 500

2026 Date:

KNP12/2: Sun. 31 May – Tue. 9 June

Included:

9 nights accommodation
Registered tour guide
Bus transport
Entrance fees as indicated
Meals as indicated

Excluded:

Lunch
Tips
Drinks

If you have a valid Wild Card, please remember to bring it with.

Deposit of R6 500 (per person) is payable 14 days after booking confirmation. Balance to be paid 60 days before tour departs.



Adventure to the Kruger National Park

DAY 1: We kindly ask that everyone be ready from 04:30 so that we can depart by 05:00 from Town Lodge – Menlo Park. We head north to Mapungubwe and spend the afternoon visiting Mapungubwe National Park to see the point where three countries meet. We will overnight in one of the park's accommodation facilities.

Included: Dinner

Included entrance fees: Park fees



DAY 2: After a delicious breakfast, we head toward Masisi, taking in the stunning views and unique fauna and flora along the way. In Masisi, we will overnight at Awe Lani Lodge.

Included: Breakfast & Dinner

DAY 3: Today, our journey to the renowned Kruger National Park begins. After breakfast, we board the bus and make our way to the park. Along the way, we'll make various stops to enjoy the incredible natural surroundings.

Included: Breakfast & Dinner

Included entrance fees: Park fees

DAY 4: After breakfast, we continue exploring the park as we travel further south. We end the day in Phalaborwa, where we overnight at the Bush Villas.

Included: Breakfast & Dinner

Included entrance fees: Park fees

DAY 5 & 6: From Phalaborwa, we re-enter the park and travel to the Orpen Gate, where we will spend 2 nights at Timbavati Safari Lodge to explore this region of the park.

Included: Breakfast & Dinner

Included entrance fees: Park fees

Please note that all entrance fees as indicated below daily descriptions, are included in the price.



DAY 7, 8 & 9: After breakfast, we travel through the park to Malelane, where we'll stay for 3 nights at Rio Vista Lodge, located on the banks of the Crocodile River. Each day, we'll explore the park and enjoy its rich wildlife.

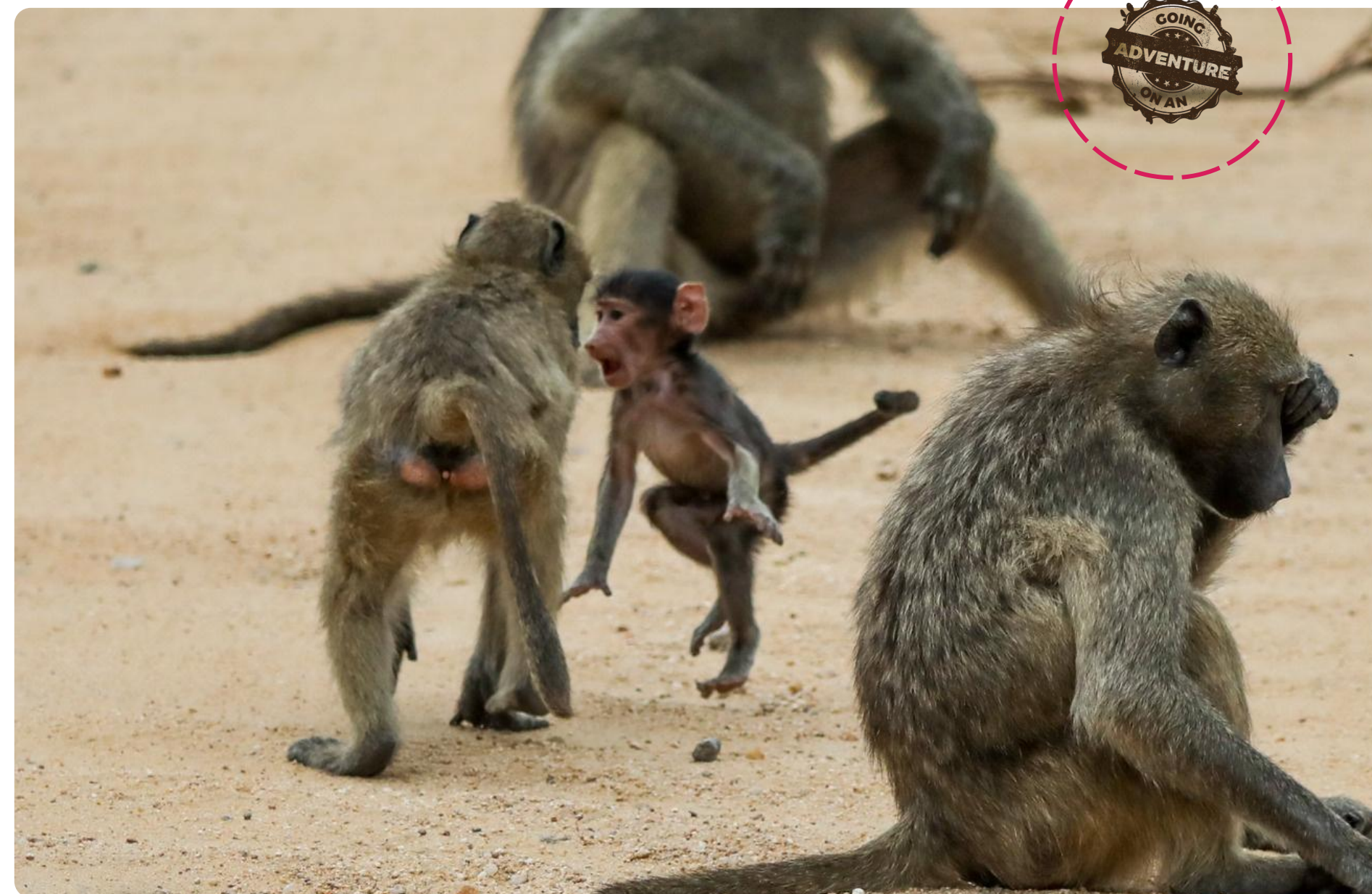
Included: Breakfast & Dinner

Included entrance fees: Park fees



DAY 10: After a lovely breakfast, we begin our journey back to Pretoria. Depending on the traffic, we hope to arrive at Town Lodge shortly after midday.

Included: Breakfast & Dinner





Important to note

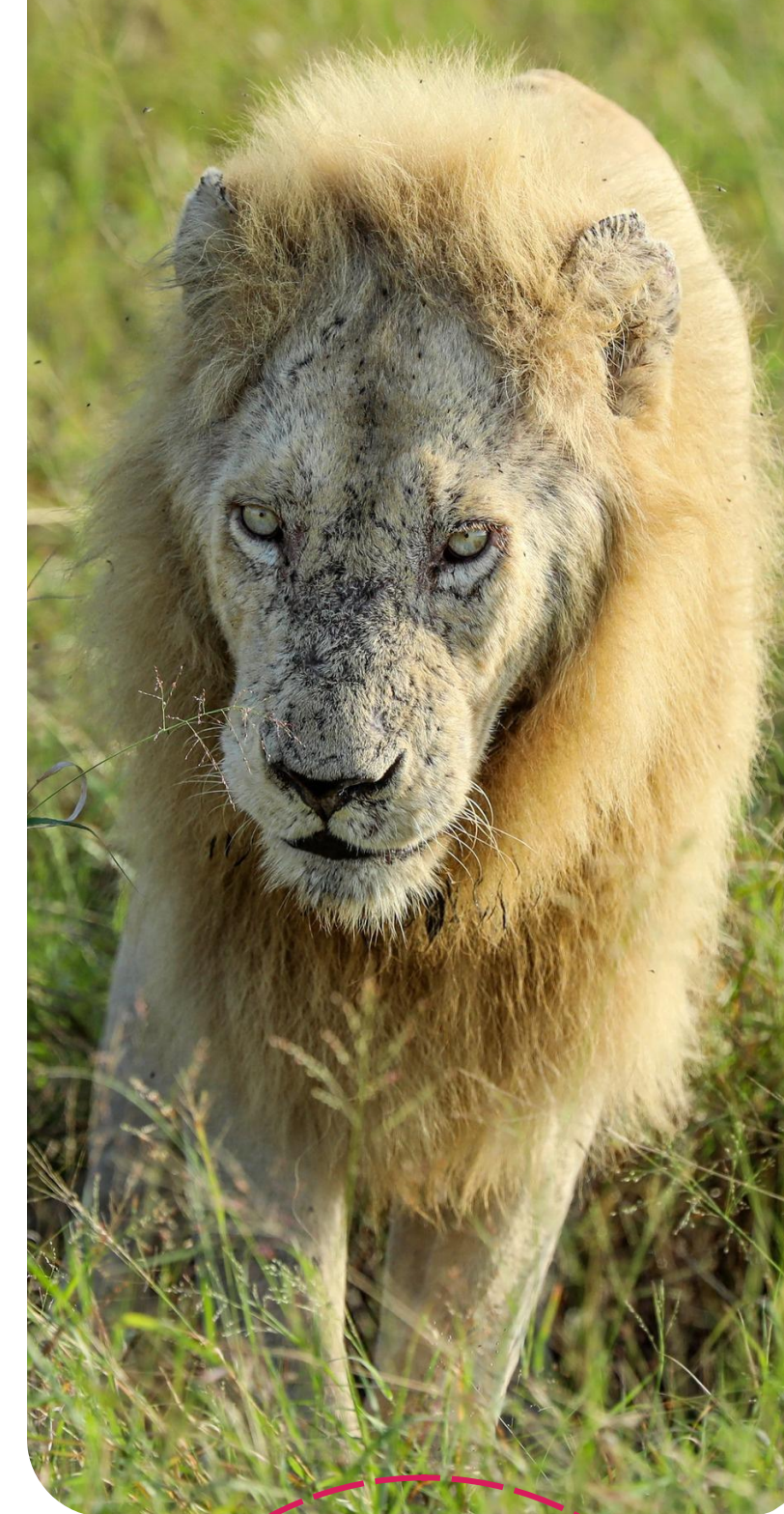
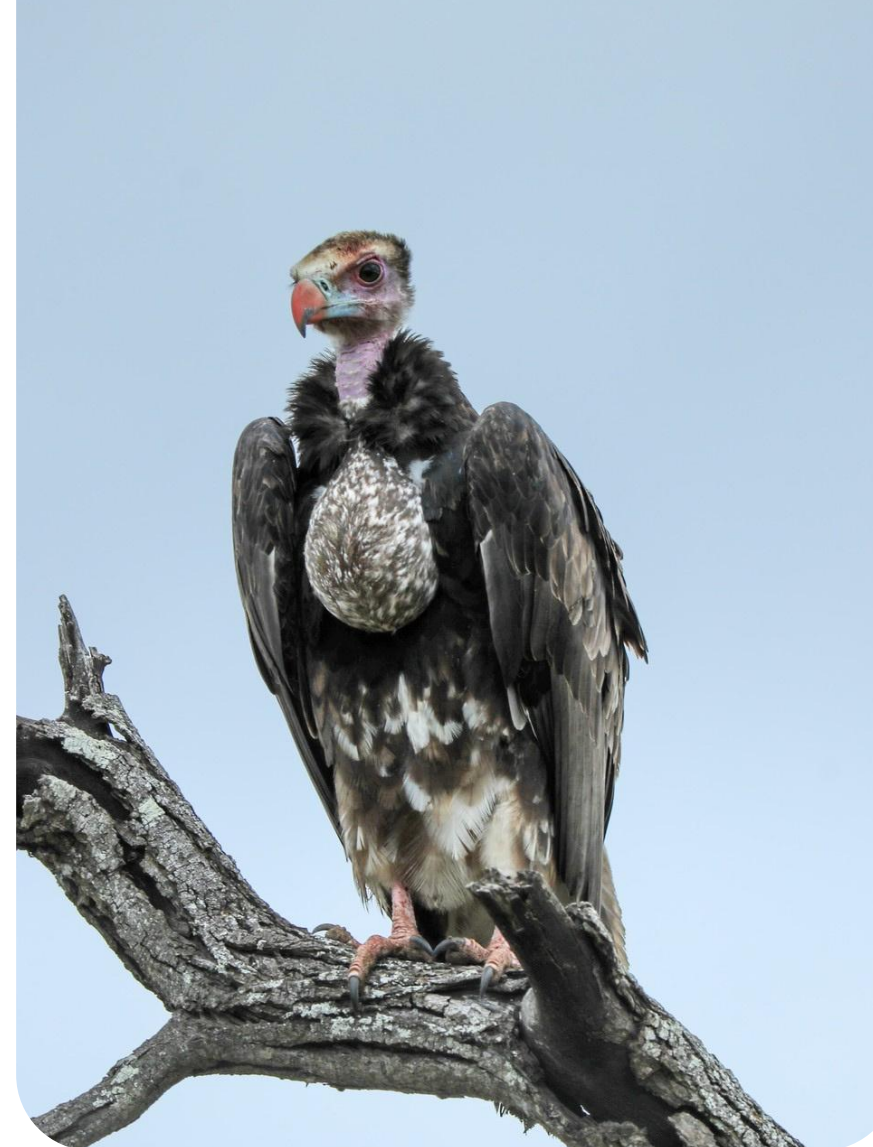
Single supplement is available in a very limited number due to the number of rooms available. Please contact our office via email info@namakwatoere.com or phone +27 (0) 27 219 1633 to confirm if we have space available before a single booking is made.

Single bookings can always be changed to a double/twin booking if you decide to bring a friend/partner along. A full refund will be made for the difference between sharing and single in case full payment has been received. No administrative fees will be charged.

When booking a flight from our end destination, please consult the office via email or phone to make sure that you do not book a flight (or other transport arrangements) too early.

We are happy to assist with flight bookings as well as payment of the flights – the cost is R200 per person for bank charges and administration fee. These flights will be booked after we have received your deposit. The cost of the flights, along with the R200 per person, is also payable immediately after the booking has been completed and you have received your flight ticket. Please note that we do not receive flights at a discounted rate, so you are welcome to book all flights yourself if you prefer.

At Namakwa Tours, we do our utmost to follow the tour itinerary as closely as possible. However, should unforeseen circumstances arise, we may adjust the program as needed. Our guests' best interests are always our top priority, and our goal is to provide them with an unforgettable holiday experience.





Road conditions and Infrastructure

Roads in and throughout South Africa are often in poor condition, which makes it hard on our vehicles. We take great pride in our bus and ensure it is serviced regularly and is in a good condition, but breakdowns do happen. Some of the roads we travel on are long, full of dust and not exactly smooth sailing. This means that the travel time indicated is just a rough guide and dependant on various factors that are not always in our control. We know that it can be tough, but the destinations at the end of the day are extra-ordinary!



Medical & Health Information

Travelers, old and young are required to be in good health to participate fully on this trip. We expect all travelers to read carefully through the program and asses you on the stress of activities mentioned in the day-to-day program. If in the opinion of our tour guide or leader, any traveler is unable to participate in activities or on the rest of the tour; they reserve the right to exclude them from the activity or tour at any stage, without refund. The appropriate documentation will be provided for travel insurance. All clients should consult their doctor or medical professional on information regarding vaccinations and anti-malaria medication requirements before departure. We recommend that you carry your own small first aid kit containing personal required medication and an extra pair of reading glasses. Rehydration salt, motion sickness tablets and diarrhea blockers are also advisable to have on hand.



Travel Insurance

We strongly recommend that you take out travel insurance for your tour. We work with TIC (Travel Insurance Consultants) and you are welcome to contact our office for a quotation.

Drinking Water

As a rule, we consider all tap water to be not suitable for human consumption, as it may contain different levels of minerals or bacteria than the water your stomach is used to at home. Your body may not be use to this, and it can cause illness. It will upset your stomach and it will spoil the rest of your trip. Many of the accommodation facilities we use provide guests with safe drinking water and bottled water is readily available throughout the trip. Please make sure to bring along a water bottle to fill up during the tour.





Why travel with Namaqua Tours?

Who is Namaqua Tours and what do we do differently?

- We are a family business and have been in the tour industry since 1985.
- Our tour guides are the most competent, helpful and the friendliest guides that you will ever find.
- Each tour member's personal needs will be met by our trained personnel.
- There is no rushed tour program. Our bus driver is also on holiday and not under any pressure, therefore you can always feel safe and relaxed.

What happens if Namaqua Tours cancels a tour?

- The tour will only take place for a minimum of 10 people.
- Namaqua Tours undertakes, as far as possible, not to cancel any tour. In the unlikely event that a tour is cancelled, we are willing to transfer all funds you have already paid to another tour of your choice or to the following year (excluding the non-refundable deposit and bank fees).



How do I book a tour?

- When you have decided to book one of our tours, complete the application form and e-mail it to our office at info@namakwatoere.com. A link to the online application form is also available.
- You will receive a tour reference number along with Namaqua Tours' banking details. Please ensure that this reference number is entered under 'beneficiary reference'.
- After we received the booking, we will do the necessary arrangements as indicated on your form.



Hotel accommodation before and after tour

Town Lodge – Menlo Park – Pretoria – Depart 05:00

(2 **)

Single: R2 095

Double/Twin: R2 330

Breakfast: Full Breakfast included (07:00-10:00) – breakfast packs available on demand

Lunch and Dinner: Available on request

Shuttle service: From R600 per shuttle

Parking: Free

WiFi: Free

Tel: (012) 348 2711



All accommodation must be booked through Namakwa Tours' office to qualify for the rates as indicated.

Flights: Contact us for prices and schedules.

Travel Insurance: Contact us for a quote.

Please contact our office for the booking form or to request the online booking form.



Talk to us!



027 219 1633



info@namakwatoere.com



066 385 4653



www.namakwatoere.com



www.facebook.com/namakwatoere



@namakwatoere



@namakwatoerenamaquatours6758

