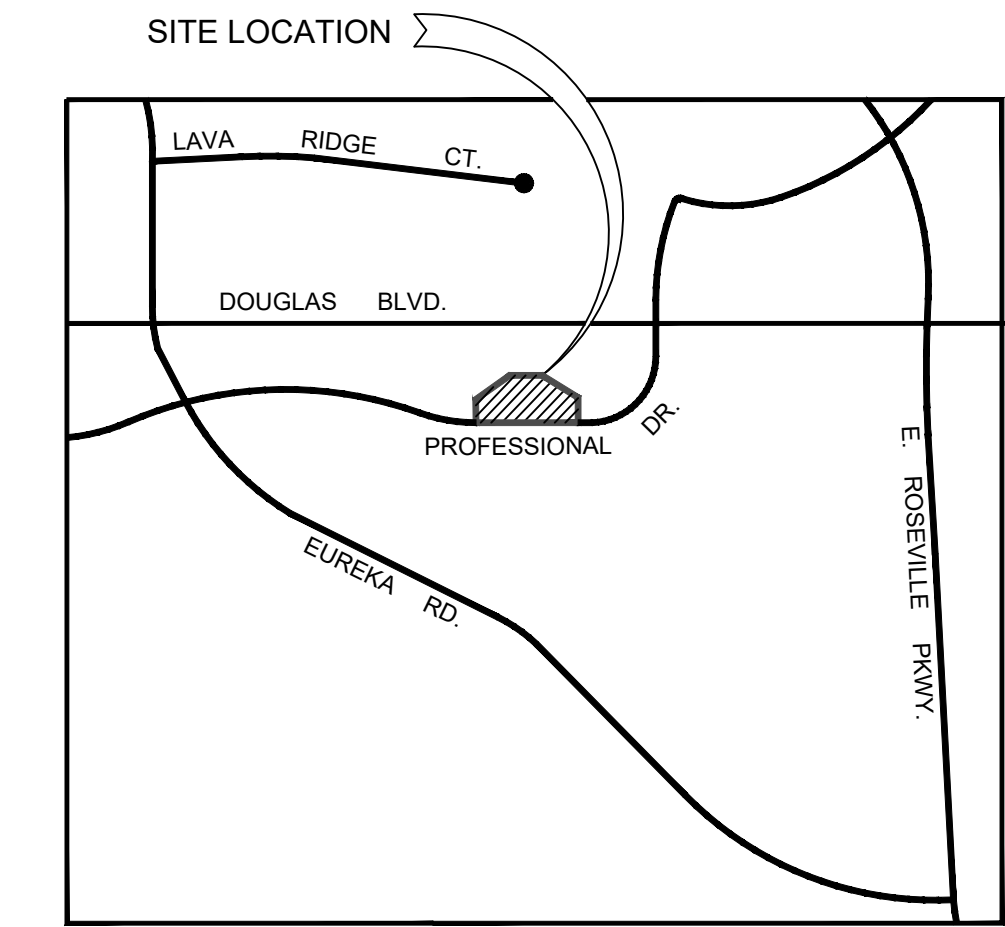
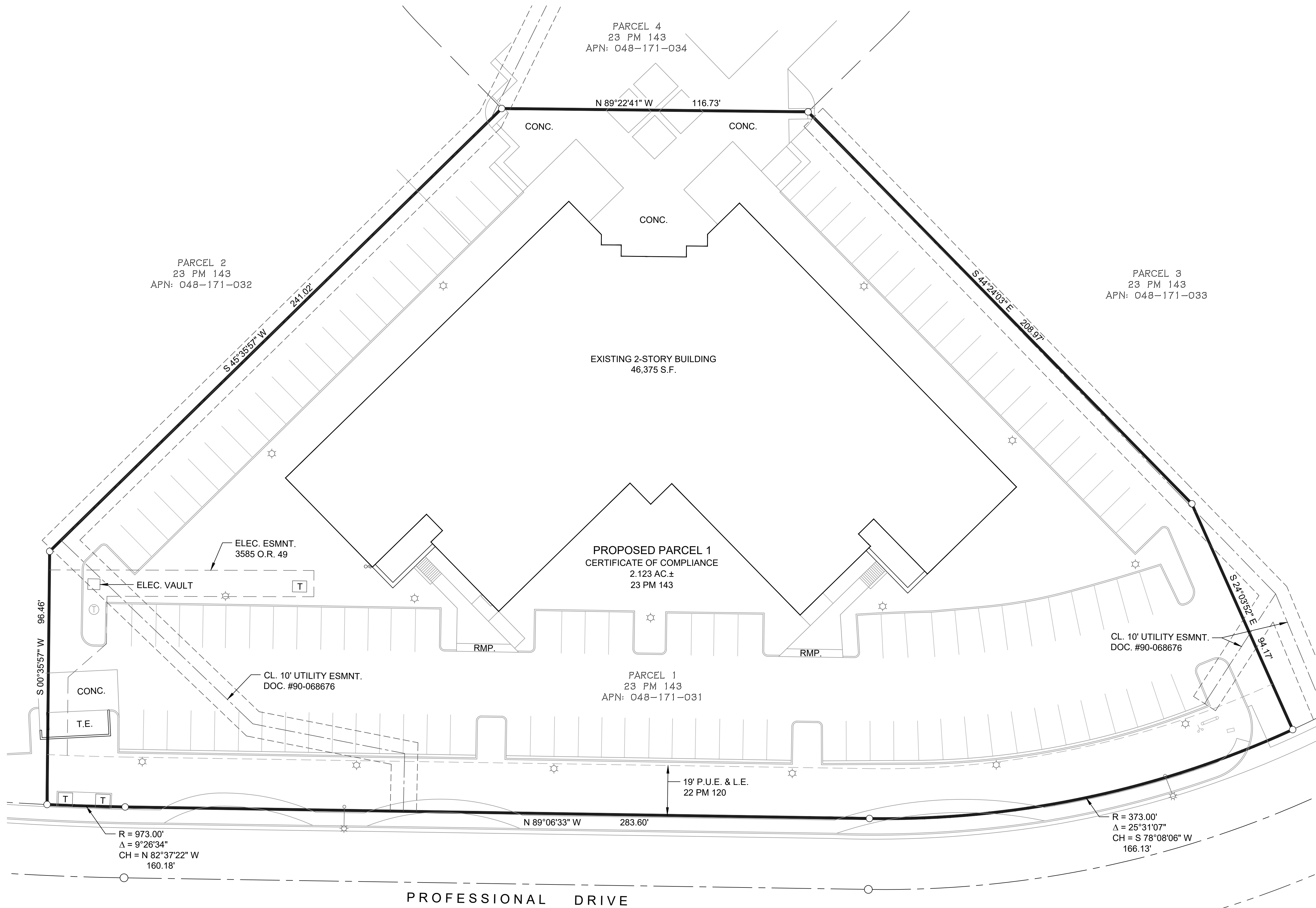


2260 DOUGLAS BLVD. TENTATIVE CONDOMINIUM MAP

A.P.N.: 048-171-031, PARCEL 1 OF 23 PM 143
2260 DOUGLAS BOULEVARD
CITY OF ROSEVILLE, PLACER COUNTY, CALIFORNIA

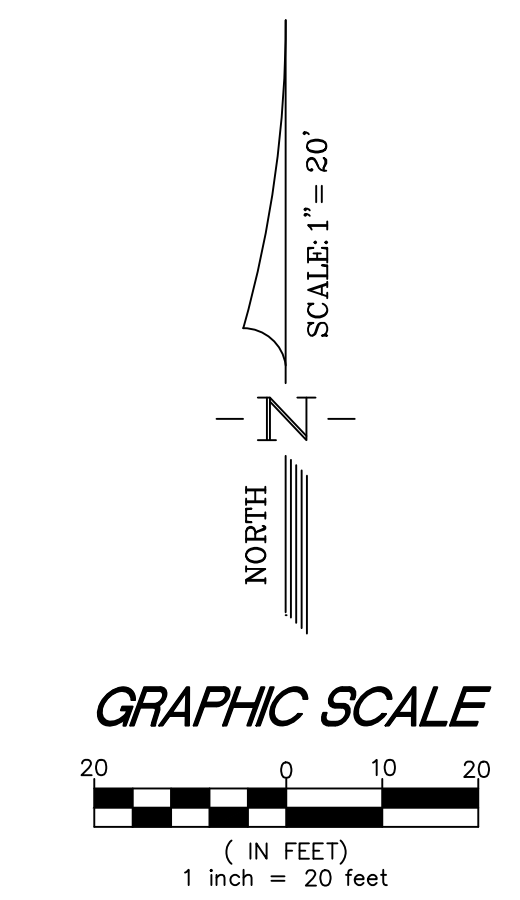


VICINITY MAP
N.T.S.

OWNER: EPIC GLOBAL CONSULTING, LLC
3001 DOUGLAS BLVD., SUITE 230
ROSEVILLE, CA 95661
(530) 388-8711

ENGINEER: SURVEYORS GROUP INC.
9001 FOOTHILLS BLVD., SUITE 170
ROSEVILLE, CA 95747
(916) 789-0822

ELECTRICITY: CITY OF ROSEVILLE.
FIRE PROTECTION: ROSEVILLE CITY FIRE DEPARTMENT
SEWER: CITY OF ROSEVILLE
SCHOOL DISTRICT: EUREKA UNION SCHOOL DISTRICT & ROSEVILLE JOINT UNION HIGH SCHOOL DISTRICT
WATER: CITY OF ROSEVILLE
TELEPHONE: CONSOLIDATED COMMUNICATIONS
LAND USE DESIGNATION / ZONING: BP/SA-SE - BUSINESS PROFESSIONAL - SPECIAL AREA
ASSESSOR PARCEL NUMBER(S): 048-171-031
PROPERTY ADDRESS: 2260 DOUGLAS BLVD.
LAND AREA: PARCEL 1 = 2.123 ACRES±
CONDOMINIUM PLAN:
CERTIFICATE OF COMPLIANCE: 22 OFFICE UNITS



SURVEYED BY	G. TAYLOR
DRAWN BY	T. BLAIR
CHECKED BY	T. BLAIR
DATE	10-30-23
SCALE	1" = 20'
REV NO	
REVISION DESCRIPTION	
DATE	

TITLE

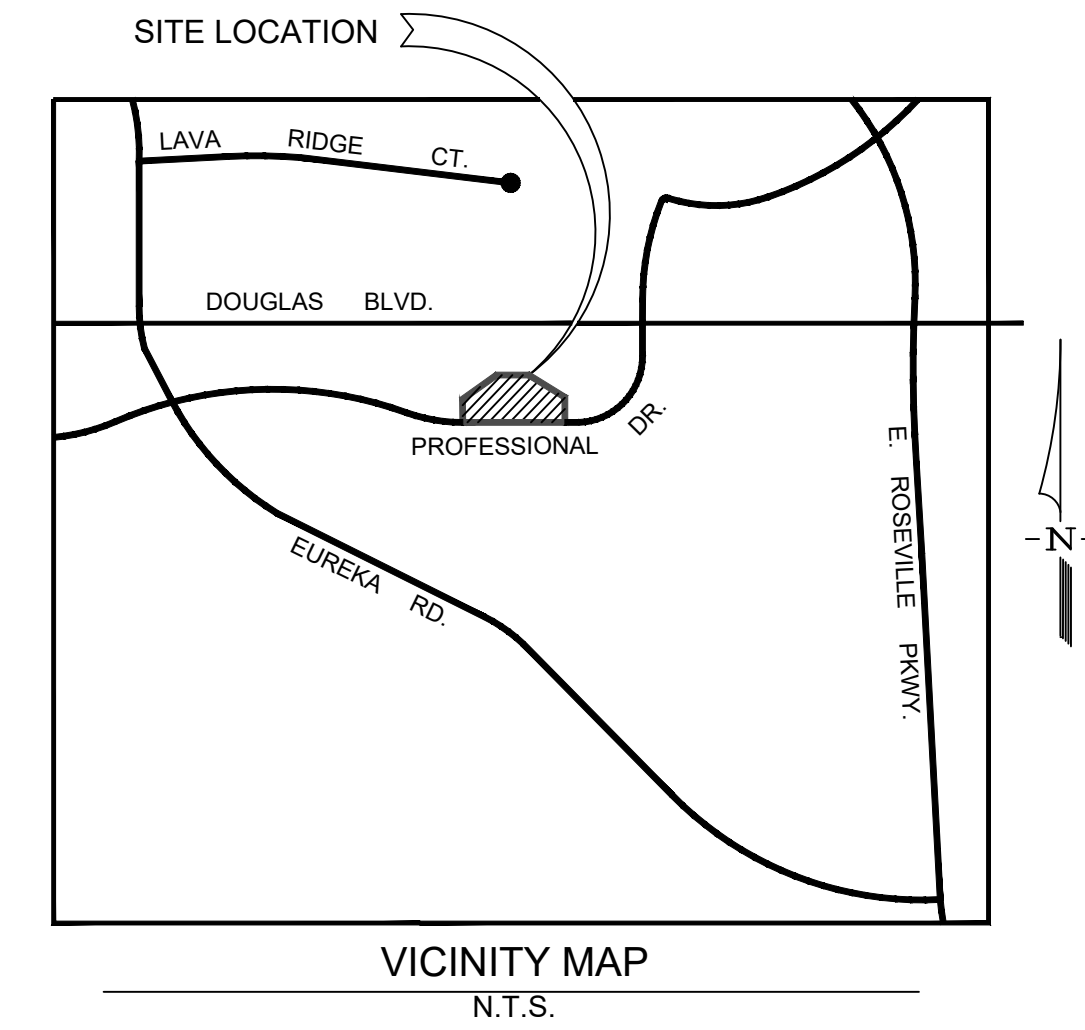
TENTATIVE CONDOMINIUM MAP
A.P.N.: 048-171-031, PARCEL 1 OF 23 PM 143
2260 DOUGLAS BOULEVARD
CITY OF ROSEVILLE, PLACER COUNTY, CALIFORNIA

SGI COMPANIES

SGI CIVIL • SGI 3D • SURVEYORS GROUP, INC.
9001 Foothills Blvd., Suite 170
Roseville, CA 95747
(916) 789-0822 (Tel) (916) 789-0824 (Fax)
www.sgicompanies.com

2260 DOUGLAS BLVD. SITE PLAN - CONDOMINIUM PLAN

A.P.N.: 048-171-031, PARCEL 1 OF 23 PM 1430
2260 DOUGLAS BOULEVARD
CITY OF ROSEVILLE, PLACER COUNTY, CALIFORNIA



OWNER: EPIC GLOBAL CONSULTING, LLC
3001 DOUGLAS BLVD., SUITE 230
ROSEVILLE, CA 95661
(530) 388-8711

ENGINEER: SURVEYORS GROUP INC.
9001 FOOTHILLS BLVD., SUITE 170
ROSEVILLE, CA 95747
(916) 789-0822

ELECTRICITY: CITY OF ROSEVILLE.

FIRE PROTECTION: ROSEVILLE CITY FIRE DEPARTMENT

SEWER: CITY OF ROSEVILLE

SCHOOL DISTRICT: EUREKA UNION SCHOOL DISTRICT & ROSEVILLE JOINT UNION HIGH SCHOOL DISTRICT

WATER: CITY OF ROSEVILLE

TELEPHONE: CONSOLIDATED COMMUNICATIONS

LAND USE DESIGNATION / ZONING: BP/SA-SE - BUSINESS PROFESSIONAL - SPECIAL AREA

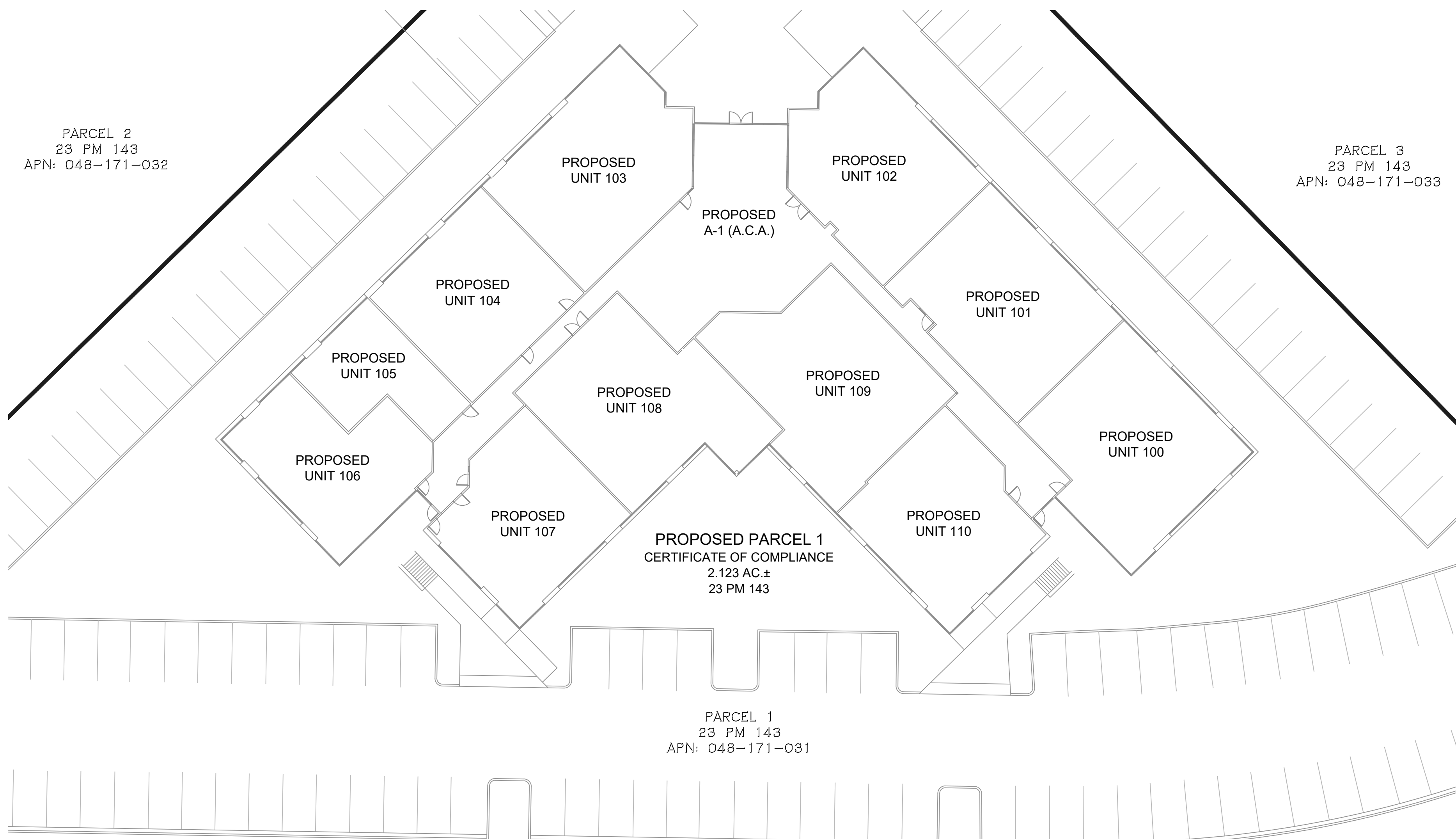
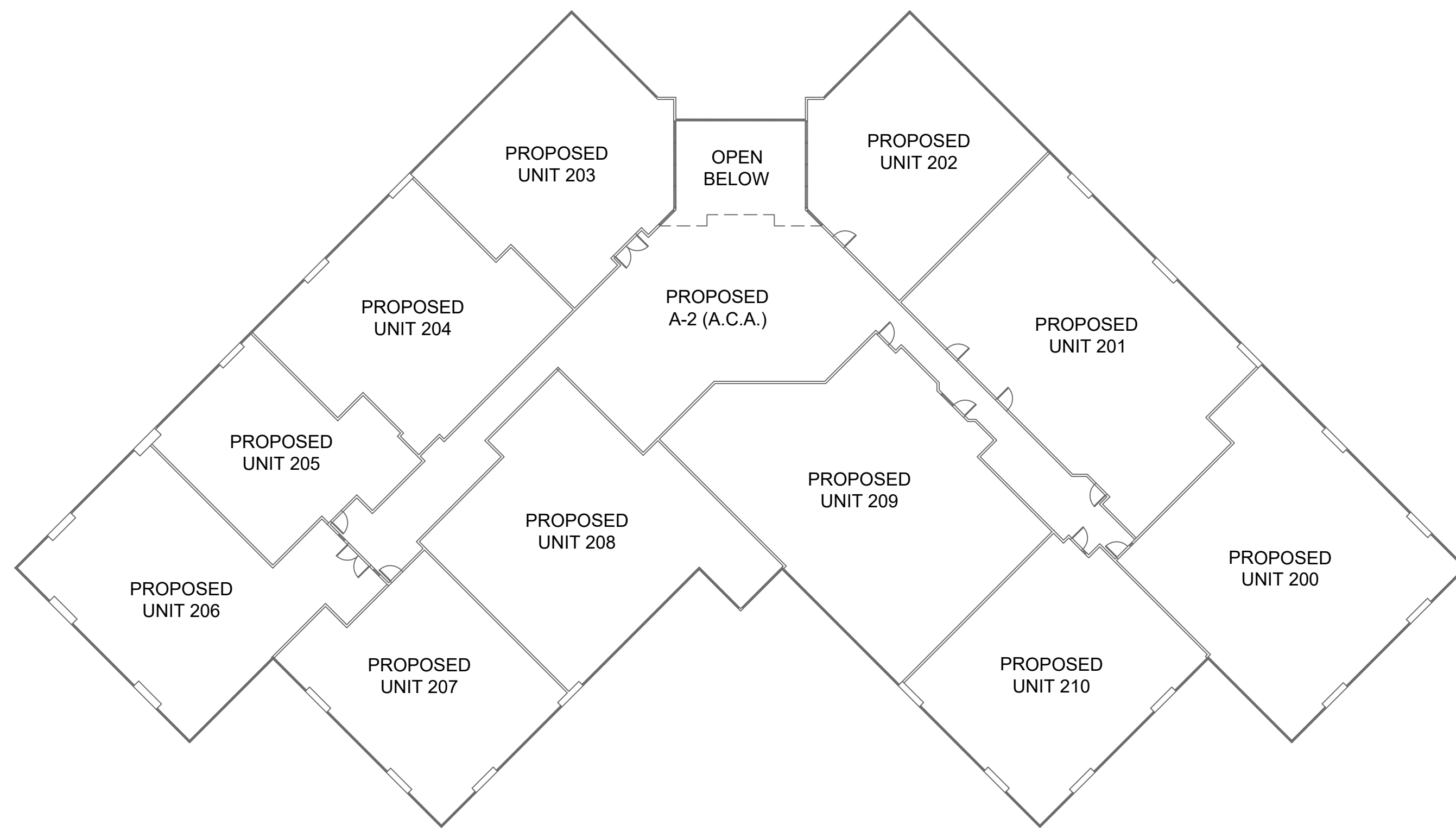
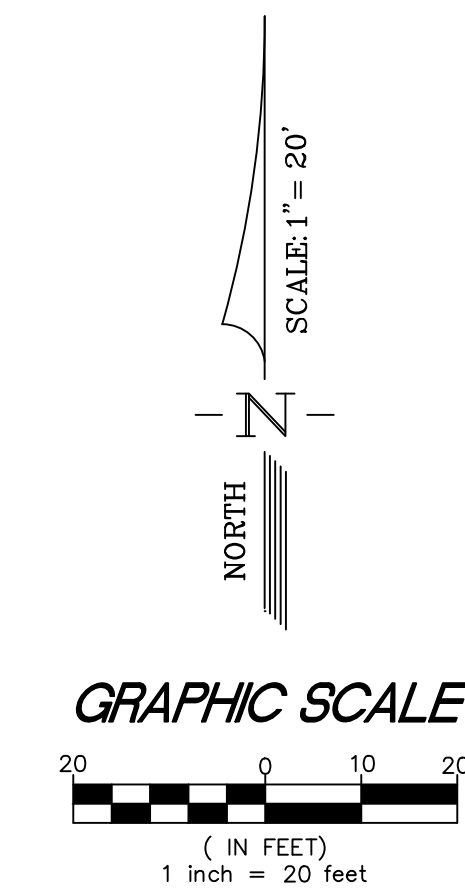
ASSESSOR PARCEL NUMBER(S): 048-171-031

PROPERTY ADDRESS: 2260 DOUGLAS BLVD.

LAND AREA: PARCEL 1 = 2.123 ACRES±

CONDOMINIUM PLAN:

CERTIFICATE OF COMPLIANCE: 22 OFFICE UNITS



SURVEYED BY	G. TAYLOR
DRAWN BY	T. BLAIR
CHECKED BY	T. BLAIR
DATE	10-30-23
SCALE	1" = 20'

REV NO	REVISION DESCRIPTION	DATE	BY

TITLE
TENTATIVE CONDOMINIUM MAP
A.P.N.: 048-171-031, PARCEL 1 OF 23 PM 143
2260 DOUGLAS BOULEVARD
CITY OF ROSEVILLE, PLACER COUNTY,
CALIFORNIA

SGI COMPANIES
SGI CIVIL • SGI 3D • SURVEYORS GROUP, INC.
9001 Foothills Blvd., Suite 170
Roseville, CA 95747
(916) 789-0822 (Tel) (916) 789-0824 (Fax)
www.sgicompanies.com