

SAFARI



Childcare

Pre-School • Full Day Care

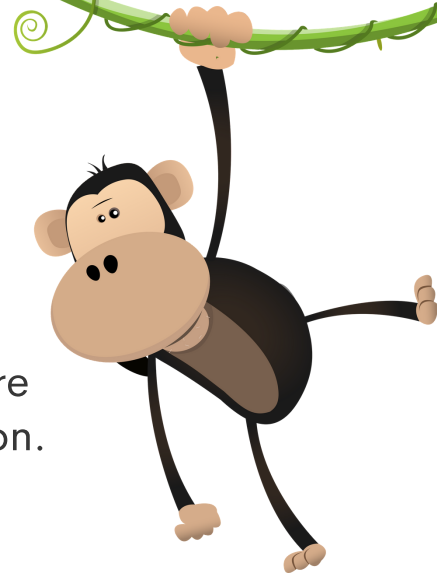


Tel: 01206 546824

www.safarichildcare.co.uk

Welcome!

Hello, and welcome to Safari Childcare. We understand how important it is choosing the right child care setting for your family, and we are here to help guide you through this huge decision.



We have taken into account everything that you should consider as you explore your options, such as:

- A highly experienced management team.
- Staff qualified to a minimum of level 3 (Childcare Level 3)
- Safe, secure and clean facilities
- Working in partnership with parents
- Child-led development learning and play environments
- Open from 7.00am - 6.30pm



Aims & Values

To offer the highest quality care to children from 3 months up to 5 years.

To provide a safe, stimulating and clean environment for all children.

To provide flexible childcare at times that suit the parent / carer.

To help children learn through play.

To identify and respond appropriately to each child's individual needs.

To provide positive developmental opportunities that allow children to explore, learn and grow.

To build relationships with parents to ensure the child's routine is adhered too.

To support parents with their role as the child's first educator through mutual respect and understanding.

To encourage each child to be creative, imaginative and to be themselves.

To ensure staff always deliver the highest quality of care and education and are kept up to date with the latest training techniques.



About Us

At Safari Childcare, we are committed to providing high-quality care and education in a safe home-from-home environment for all of our children.

We pride ourselves on being able to deliver affordable and flexible childcare services to our community, and we ensure that all children have access to stimulating learning environments while also being supported by highly qualified team.

Our early education and childcare services cater for children from three months up to five years old, and our flagship setting on Halstead Road has been helping children as they explore, learn and grow since 2015!

Here at Safari Childcare, it is our responsibility to provide the building blocks for your little one's future, so they can flourish and grow into unique individuals and have the skills to reach their full potential.

We understand the worries and anxieties that parents feel when saying goodbye to their children and are keen to help support parent's needs as well as their child's, so being a part of Safari Childcare is a smooth and enjoyable process with minimal worries.



Mission Statement

At Safari Childcare, our mission is to ensure that all children have the opportunity to access high-quality childcare.

We offer children the ability to play in an exciting, inspiring and safe environment that provides them with all of the resources they will need in order to explore, learn and grow in to confident individuals.

We are devoted to delivering a high-quality service where parents and children are valued and their voices are heard, and we pride ourselves on being able to deliver an outstanding level of care and early education. We are continuously raising our standards and challenging the expectations of what quality childcare should be!

We understand that choosing a childcare provider is a monumental decision for parents. Safari Childcare therefore provides peace of mind for parents through secure, innovate CCTV technology that allows them to view live stream images of their child playing happily and safely.

Our highly qualified and experienced teachers will deliver the best possible care and learning opportunities for your child through a range of exciting and inspiring activities.

We are passionate about delivering high-quality and outstanding early education that will give your children the best possible start in life.





Learning & Development

At Safari Childcare, learning is led through your child's spontaneous play, meaning that your child is central to the EYFS (Early Years Foundation Stage)

The EYFS ensures:

- Children learn through play
- Providers work closely with parents
- You are kept up to date on your child's progress
- The welfare, learning and all-round development of children, regardless of backgrounds and levels of ability, including those with special educational needs and disabilities.

Your child will be acquiring new skills, gaining important knowledge and learning how to demonstrate their new understanding through 7 keys areas of learning and development.

Children should mostly develop these 3 prime areas first:

- Communication and Language
- Physical Development
- Personal, Social and Emotional Development


These prime areas are those most essential for a child's healthy development and future learning.

As your child grows, the prime areas will help your little one to develop skills in these 4 specific areas:

- Literacy
- Mathematics
- Understanding the World
- Expressive Arts and Design

Together, these 7 areas are used to plan your child's learning and activities. Our team who will be teaching and supporting your child will make sure that these activities are suited to your child's unique needs. This is a little bit like a curriculum in primary schools, but has been designed to be really fun and engaging so that teachers can adapt this to your child's unique needs and interests.





Children in the 'EYFS' learn by playing, exploring and being active through creative and critical thinking exercises which takes place both indoors and outside.

Progress Checks and Profiles

When your child is 2, our teachers will give you a written summary of how your child is progressing against the 3 prime areas of learning:

- Communication and Language
- Physical Development
- Personal, Social and Emotional Development

This is called the progress check at age 2.

This will highlight the areas where your child is progressing well and anywhere they might need some extra help or support.

Key Person & Parent Relationships

Safari Childcare recognises that settling a child of any age into a new child care environment can be a delicate and stressful time for a family.

Our highly qualified and trained team understand how to support you through this transition and will provide any reassurance that you may need as your family settles into this new routine.

When your child joins Safari Childcare, they will be allocated a named key person. Their key person will help them settle into their new environment and will also speak to you before your child begins at Safari Childcare to ensure that you have all of the information you need.

Transition to school

Moving from day-care to school is a huge step, and we want to ensure that this is as smooth as possible for you and your child.

We work closely with the local schools and the extended community throughout your child's time with us to ensure we make that transition as seamless as possible when this time comes.

Please feel free to ask a member of our team for a copy of our Transition to School policy.



Additional Classes

Forest School

Giving children the ability to play and explore in a natural environment fosters their intellectual, emotional, social and physical development. By spending time outdoors with our Forest School, children can learn by doing and experimenting with ideas as nature provides countless opportunities for discovery, creativity and problem-solving.

Rugby Tots

Rugby has a lot to offer, and we're not just talking about health! Physical exercise is incredibly important and should be a part of your child's routine. Team sports help to teach us critical thinking and can stimulate your child's mental capability.

Spanish School

Teaching your child a second language at the start of their child care journey has countless benefits! Not only does this help to develop their early language skills, but it will also give them an academic advantage if they wanted to pursue languages later in their education. Most importantly, our Spanish School makes learning fun!

Yoga

Yoga isn't just for grown-ups! We believe that using yoga in the classroom can have a positive impact on a child's well-being, for instance, yoga can help a child manage their anxiety through relaxation exercises and breathing techniques. Yoga has also been shown to help enhance children's concentration and memory!

Healthy Eating

We have carefully devised a four week menu that rotates in order to ensure your child will not be given the same meal twice within the period. All meals are freshly prepared within the premises by our own chef, Shelia (The Governess), and all diets are catered for.

All team members that prepare and handle food have undertaken a food hygiene course, and children are highly encouraged to maintain a standard of hygiene when preparing for mealtimes by hand washing and ensuring surfaces are clean.

Snacks are provided in a sharing tray so the children can choose what they would and would not like to eat, and although we encourage the children to try new foods, there is no pressure to do so as the snacks we offer are all healthy to ensure that children get goodness from whatever they decide to eat!



Call us to book a showaround today.
Tel: 01206 546824

iWatch

Safari Childcare is proud to offer our parents the service of iWatch.

iWatch enables parents of the setting to securely watch your child through live images of CCTV and enable parents to join in with their child's day and of course seeing all the mischief they get up to whilst here! With a unique login and password, parents will be able to login and view your child playing on the times and days they attend the setting.

For more information visit <https://iwatch.webcam/>



Our Guarantees to You

- ✓ We will work with you for as long as needed to ensure your child is fully settled into Safari Childcare.
- ✓ Your child will be safe, secure and cared for by our entire team.
- ✓ They will be treated as an individual.
- ✓ Your opinions and values will always be listened to.
- ✓ Our team will always be friendly and are prepared to go the extra mile.
- ✓ Your child's progress will always be documented.
- ✓ Your child's best interests will always be our top priority.

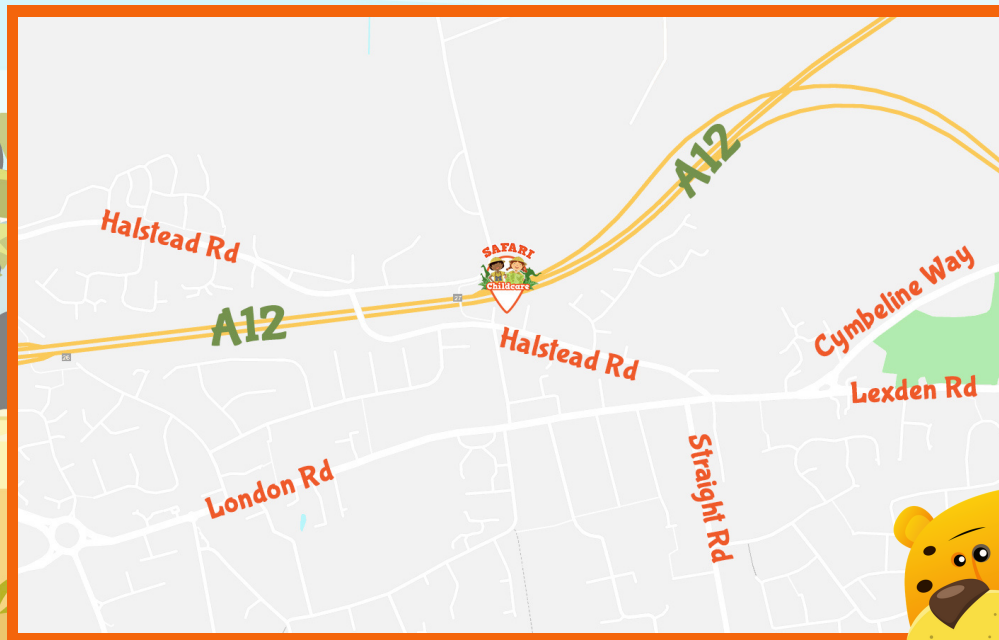




SAFARI



Pre-School • Full Day Care



Safari Child Care Pre-school & Full Day Care
79 Halstead Road, Lexden, Colchester, CO3 9AD

info@safari-childcare.co.uk

Tel: 01206 546824

www.safarichildcare.co.uk

