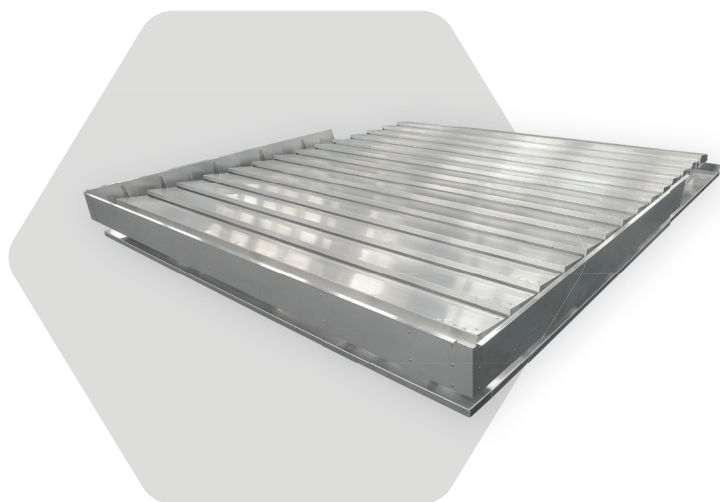


mcr LAM louvered vents

mcr LAM louvered vents are part of natural smoke exhaust system, with principal purpose of removing hot fire gases outside building. Louvered vents produced by MERCOR are available in wide range of dimensions, types of control system and making options. **mcr LAM** louvered vents are CE marked in acc. to EN1201-2.

> **1,13 m²**
FREE AREA



smoke exhaust



lighting



ventilation



Louvered smoke exhaust vent mcr LAM 5-150 roof mounted

Clear opening:	100 x 150 cm
Number of blades:	5 blades
Base glazing:	insulated aluminum sheet (blind glazing)
Overlay base:	<ul style="list-style-type: none"> • 20 cm high • made of aluminum sheet 2 mm
Flange:	20 cm, drip cap 5 cm
Electric control:	24 V / 1 x 0,8 A
SL class:	SL 250
WL class:	WL 1500
Opening mechanism:	~3 cm below base
Aeorodynamic area with wind deflectors :	Aa=0,945 m ²
Classification:	CE EN 12101-2
Free geometric area:	1,13 m ²
BIM models:	✓

Mill finish aluminum as a standard